



110BAR PRESSURE WASHER WITH TSS 230V WITH ACCESSORY KIT

MODEL NO: **PW1601**

Thank you for purchasing a Sealey product. Manufactured to a high standard, this product will, if used according to these instructions, and properly maintained, give you years of trouble free performance.

IMPORTANT: PLEASE READ THESE INSTRUCTIONS CAREFULLY. NOTE THE SAFE OPERATIONAL REQUIREMENTS, WARNINGS & CAUTIONS. USE THE PRODUCT CORRECTLY AND WITH CARE FOR THE PURPOSE FOR WHICH IT IS INTENDED. FAILURE TO DO SO MAY CAUSE DAMAGE AND/OR PERSONAL INJURY AND WILL INVALIDATE THE WARRANTY. KEEP THESE INSTRUCTIONS SAFE FOR FUTURE USE.



Refer to instructions



Wear eye protection



Wear protective gloves



Wear safety footwear



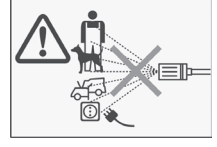
Wear protective clothing



Wear ear protection




DO NOT drink water from pressure washer

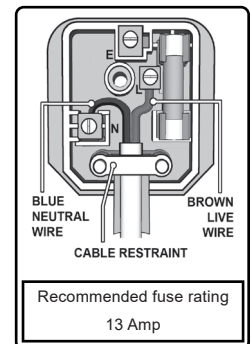


DO NOT direct jet against yourself, other persons, animals, electrical equipment or the machine itself

1. SAFETY

1.1. ELECTRICAL SAFETY

- ❑ **WARNING!** It is the user's responsibility to check the following:
Check all electrical equipment and appliances to ensure that they are safe before using. Inspect power supply leads, plugs and all electrical connections for wear and damage. Sealey recommend that an RCD (Residual Current Device) is used with all electrical products. You may obtain an RCD by contacting your local Sealey Stockist.
If the product is used in the course of business duties, it must be maintained in a safe condition and routinely PAT (Portable Appliance Test) tested.
Electrical safety information, it is important that the following information is read and understood.
- 1.1.1. Ensure that the insulation on all cables and on the appliance is safe before connecting it to the power supply.
- 1.1.2. Regularly inspect power supply cables and plugs for wear or damage and check all connections to ensure that they are secure.
- 1.1.3. **Important:** Ensure that the voltage rating on the appliance suits the power supply to be used and that the plug is fitted with the correct fuse - see fuse rating in these instructions.
 - * **DO NOT** pull or carry the appliance by the power cable.
 - * **DO NOT** pull the plug from the socket by the cable. Remove the plug from the socket by maintaining a firm grip on the plug.
 - * **DO NOT** use worn or damaged cables, plugs or connectors. Ensure that any faulty item is repaired or replaced immediately by a qualified electrician.
- 1.1.4. This product is fitted with a BS1363/A 13 Amp 3 pin plug.
If the cable or plug is damaged during use, switch the electricity supply and remove from use.
Replace a damaged plug with a BS1363/A 13 Amp 3 pin plug. If in doubt contact a qualified electrician.
Class II products are wired with live (brown) and neutral (blue) only, and are marked with the  Class II symbol;
 - A) Connect the BROWN live wire to the live terminal 'L'.
 - B) Connect the BLUE neutral wire to the neutral terminal 'N'.
 - C) After wiring, check that there are no bare wires and ensure that all wires have been correctly connected.Ensure that the cable outer sheath extends inside the cable restraint and that the restraint is tight.
 - * **DO NOT** connect either wire to the earth terminal.
Sealey recommend that repairs are carried out by a qualified electrician.



1.2. GENERAL SAFETY

- ❑ **WARNING!** Water and electricity are dangerous partners. Be extremely cautious and ALWAYS be aware that this device uses an electric motor. Always plug into a RCD (See electrical safety above). Unplug from mains before changing accessories or servicing.
- ✓ The appliance can be used for washing surfaces outdoors, whenever pressurised water is required to remove dirt.
- ✓ With special optional accessories, it can be used for foaming, and for washing with a rotary brush for application to the gun.
- ✓ This appliance's performance and user friendliness make it suitable for NON PROFESSIONAL use.
- ✓ This appliance is for outdoor use only.
- ✓ Ensure you comply with all local water supply regulations. Power washers may only be connected to mains water supply if a check valve is installed in the supply hose, or at the tap outlet.
- ✓ The supply hose must be reinforced, and have an internal diameter of 1/2". The water supply must be at least equal to the cleaner capacity. The water temperature must NOT exceed 122°F (50°C). The water supply pressure must NOT exceed 6 bar (90psi).
- ✓ Always be aware of the hazards that may occur during use. Study all applications and limitations of the washer before use.
- ✓ Use where air can freely circulate around the washer to avoid the machine overheating.
- * **DO NOT** obstruct ventilation grilles during operation.
- ✓ Position the washer as near to the water supply as possible.
- ❑ **WARNING:** Always disconnect the electricity and water supplies on completion of every job.
- ❑ **WARNING! DO NOT** use the washer if any part of the unit, gun, nozzle, detergent tank, hose or cables is damaged. Replace or repair using genuine parts only. Unauthorised parts may be dangerous and will invalidate your warranty. Always check connections are correctly secured and not cracked or damaged in any way before using the machine.
- ❑ **WARNING:** This appliance has been designed for use with the detergent provided or the detergent specified by the manufacturer, such as a neutral shampoo based on biodegradable anionic surface active detergents. The use of other detergents or chemicals may put the appliance's safety at risk.
- ❑ **WARNING!** Ensure all persons and animals keep at a minimum distance of 15 m from the washer when in use. All persons within 15 m shall wear appropriate P.P.E.

- ✓ Wear adequate protective clothing, goggles and anti-slip rubber soled footwear.
 - ✗ **DO NOT** touch the plug and the appliance with wet hands or when barefoot.
 - ✗ **DO NOT** direct the nozzle toward mechanical parts containing lubricant grease, as the grease will dissolve and spread over the surrounding ground. Vehicle tyres/tyre valves may only be cleaned from a minimum distance of 30 cm, otherwise the vehicle tyre/ tyre valve could be damaged by the high-pressure jet. The first indication of this is a discolouration of the tyre. Damaged vehicle tyres/tyre valves can be deadly.
 - ☐ **WARNING:** High pressure jets can be dangerous if subject to misuse. The jet must not be directed at persons, animal, live electrical equipment or the machine itself.
 - ☐ **WARNING!** The high pressure jet will cause loose particles to be propelled at high speed, which may cause serious injury.
 - ☐ **WARNING:** High pressure hoses, fittings and couplings are important for the safety of the machine. Use only hoses, fittings and couplings recommended by the manufacturer. (it is extremely important to protect these components against damage by avoiding their improper use and protecting them against bending, knocks and scratches).
 - ✓ The appliance can be used for washing surfaces outdoors, whenever pressurised water is required to remove dirt.
 - ✓ This appliance's performance and user friendliness make it suitable for NON PROFESSIONAL use.
 - ☐ **WARNING:** This appliance is equipped with T.S.– Total Stop : these appliances should not be left in standby for more than 5 minutes.
 - ☐ **WARNING! DO NOT** operate the machine without a water supply. Dry running can seriously damage the unit.
 - ✓ Switch the appliance off completely (master switch on (0) OFF) whenever it is left unattended.
 - ✓ Every machine is tested in its operating conditions, so it is normal for a few drops of water to be left inside it.
 - ✓ Take care not damage the electric cable. If the supply cord is damaged, it must be replaced by the manufacturer, its service agent or similarly qualified persons in order to avoid a hazard
 - ✗ **DO NOT** move the unit by pulling the hoses or electrical cables. Use the handle.
 - ✓ Appliance with fluid under pressure. Keep a firm hold on the gun and be prepared to take the kickback pressure. Only use the high pressure nozzle provided with the appliance.
 - ✓ Children should be supervised to ensure that they **DO NOT** play with the appliance.
 - ✗ **DO NOT** start the high-pressure cleaner without first completely unwinding the high-pressure hose.
 - ☐ **WARNING:** When winding and unwinding the pipe take care not to cause the high-pressure cleaner to overturn.
 - ✓ Before unwinding or winding the hose, switch the machine off and release the pressure in the hose itself (switching off).
 - ✗ **DO NOT** use the washer with flammable or toxic liquids or any other product. Use only recommended detergent. Unapproved detergents may corrode the machine cover and accessories.
 - ✗ **DO NOT** spray flammable liquids risk of explosion.
 - ✗ **DO NOT** direct the jet against yourself or others in order to clean clothes or footwear.
 - ☐ **WARNING:** Water that has flowed through backflow preventer's is considered to be non potable.
 - ☐ **WARNING!** The pressure washer must only be used with clean water. Unfiltered water or corrosive chemicals must not be used as these will damage the cleaner.
 - ☐ **WARNING:** Improper extension cables can be dangerous. If an extension cord is used, it must be suitable for outdoor use, and the connection must be kept dry and clear of the ground. It is recommended that this be done using a cable reel that holds the plug at least 60 mm from the ground.
 - ✓ If an extension cord is used, the plug and socket must be of watertight construction.
 - ✓ If, during operation, power failure occurs turn the electricity and water off for safety reasons.
 - ☐ **WARNING:** During the use of high pressure cleaners, aerosols may form. Inhalation of aerosols can be dangerous to health.
 - ☐ **WARNING:** Depending on the application, shielded nozzles can be used for high pressure cleaning, which will drastically reduce the emission of hydrated aerosols. However, not all applications allow the use of such a device. If the armoured nozzles are not applicable for aerosol protection, a respiratory mask of class FFP 2 or equivalent may be necessary, depending on the cleaning environment.
 - ☐ **WARNING:** the gun is fitted with a safety catch.
 - ✓ Whenever use of the machine is interrupted it is important to operate the safety catch to prevent accidental activation of the jet.
 - ✓ Safety features: gun equipped with safety locking device, appliance equipped with (Class I) overload cut out, pump equipped with by-pass valve or shutdown device.
 - ✓ The safety button on the gun is not there to lock the lever during operation, but to prevent its accidental operation.
 - ✓ Ensure the nozzle is aimed correctly at the work surface before switching on the machine.
 - ✓ Before activating the trigger, grip the gun firmly to counteract the recoil from the high pressure water jet.
 - ☐ **WARNING!** Avoid sudden bursts of water as these will cause water pressure to drop and put extreme pressure on hoses and connectors.
 - ☐ **WARNING:** The appliance is equipped with a motor protection device: in case of device intervention, wait some minutes or, in alternative, disconnect and re-connect the product to the electric system. In case this problem repeats again or if the product does not start again, take the product to the nearest After Sales Service Point
 - ☐ **WARNING:** The machine must be always kept on horizontal bases, in a safe and stable way.
 - ☐ **WARNING!** Use washer on a flat, levelled surface, in an upright position. Failure to do so will invalidate your warranty.
 - ✗ **NEVER** lay the washer down during use.
 - ✗ **DO NOT** adjust any internal control valves, as they have been factory set.
 - ✗ **DO NOT** connect other appliances to the machine inlet or outlet.
 - ✗ **DO NOT** use hoses and fittings other than those designed for use with this machine.
 - ✗ **DO NOT** touch plug with wet hands. To avoid the risk of electrocution keep all connections dry and off the ground.
 - ✗ **DO NOT** use washer if you are tired or under the influence of alcohol, drugs or intoxicating medication.
 - ✗ **DO NOT** allow children or untrained persons to operate the washer.
 - ☐ **WARNING!** Discharge residual pressure before disconnecting the washer hose. Pressure left in unit may cause injury.
 - ✓ After use, disconnect washer from electrical mains and water supply and store in a safe, dry, childproof area.
 - ✓ Protect from freezing conditions during winter.
 - ✓ Always use the appliance at the lowest pressure setting when cleaning in the vicinity of wheels and tyres.
- NOTE:** This appliance is not intended for use by persons (including children) with reduced physical, sensory or mental capabilities or lack of experience and knowledge, unless they have been given supervision or instruction concerning the use of the appliance by a person responsible for their safety. Children should be supervised to ensure that they **DO NOT** play with the appliance.

2. INTRODUCTION

Lightweight, powerful entry level unit designed for domestic and light trade use. Ideal for a range of applications including cleaning vehicles, patios, decking, motorbikes and barbecues. Fitted with a powerful 1700W motor with 330 litre water flow per hour and a maximum pressure output of 110bar. Features Automatic Total Stop System (TSS), which switches the motor on and off when the trigger is operated, prolonging motor life. Fitted with accessory storage and hose/cable hook to ensure unit stays clutter-free and mobile. Supplied with 3m hose and full accessory kit including lance extension, patio brush, rotary brush, fixed brush and detergent bottle. Supplied with power cable fitted with 3-pin plug.

3. SPECIFICATION

MODEL NO:..... PW1601
Electrical Plug Type: 3-Pin BS
Hose Length:..... 3m
Maximum Pressure: 110bar(1600psi)
Motor Power:..... 1700W
Nozzles: Built into lance
Rated Pressure:..... 80bar(1160psi)
Supply:..... 230V - 13A
Total Stop System:..... Yes
Vibration/Uncertainty:..... $ah \leq 2,5 \text{ m/s}^2$
Water Flow Rate: 330L/hr

4. CONTENTS

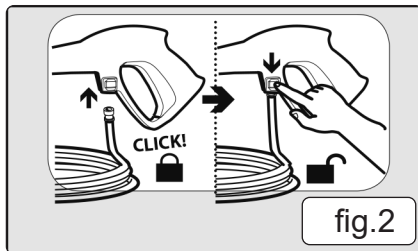


fig.1

A). Pressure Washer Unit.....	1x
B). Detergent bottle.....	1x
C). 3m Pressure Hose.....	1x
D). Patio brush.....	1x
E). Rotary brush.....	1x
F). Lance extension.....	1x
G). Lance with fixed nozzle.....	1x
H). Fixed brush.....	1x
I). Pressure Gun.....	1x

5. SET UP

5.1. PUT INTO SERVICE / STARTING UP

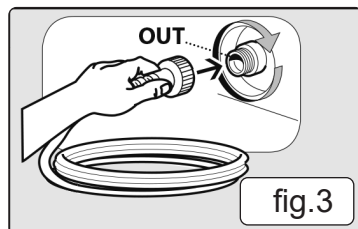


5.1.1. Push the high pressure hose into the pressure gun, until it clicks. See fig.2.

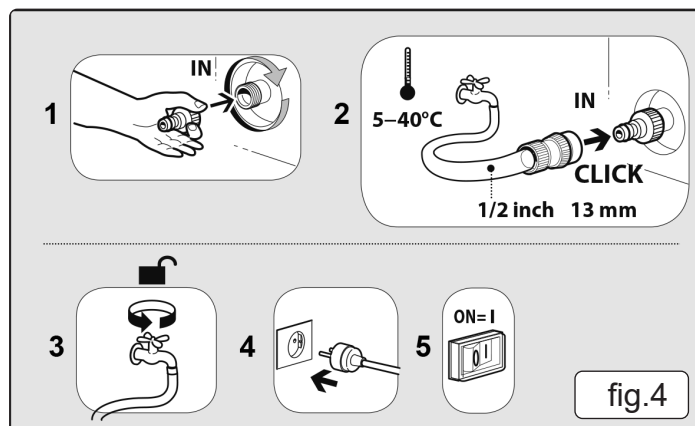
5.1.2. To release the high pressure hose, press the button as indicated in fig.2.

NOTE: Make sure the connectors are aligned correctly.

5.1.3. Check the secure connection by pulling on the high pressure hose.



5.1.4. Screw the coupling element to the water connection on the appliance. See fig.3.



5.1.5. Attach the water supply hose to the coupling on the water connection.

NOTE: The supply hose is not included.

5.1.6. Connect the 'water supply hose' to the water supply.

5.1.7. Completely open the water tap.

5.1.8. Insert the mains plug into the socket.

5.1.9. Turn on the appliance "I/ON".

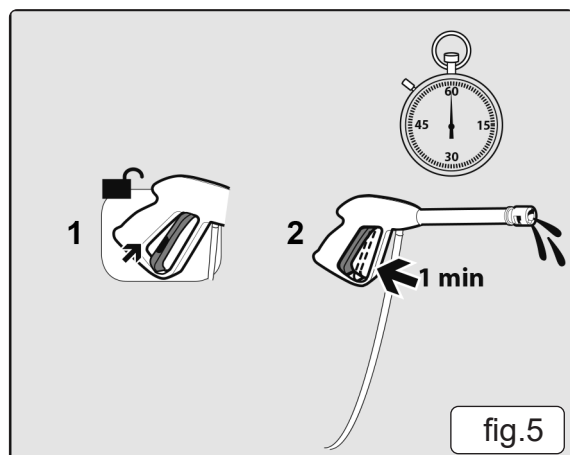
6. OPERATION

6.1. LOCKING AND UNLOCKING THE TRIGGER LEVER

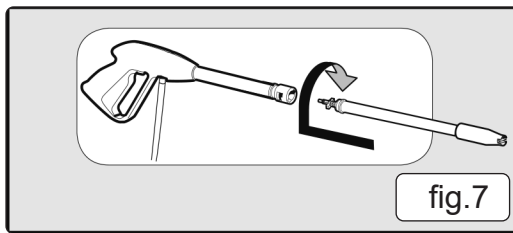
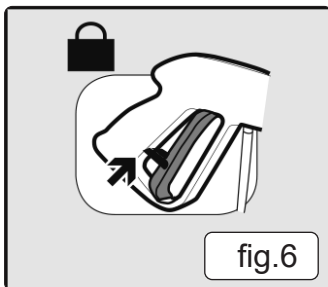
6.1.1. Unlock the trigger lever on the pressure gun.

6.1.2. Pull on the trigger lever of the pressure gun; the device will switch on.

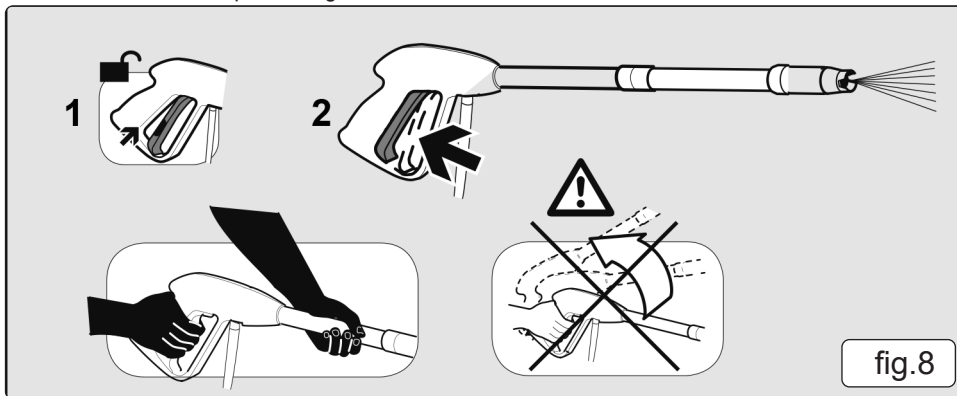
6.1.3. Switch the appliance on for a (max. of 1 minute) and wait until the water exits at the hand spray gun without bubbles, (see fig.5).



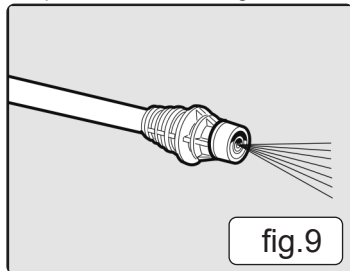
- 6.1.4. Release the lever on the pressure gun.
- NOTE:** Release the lever of the pressure gun; the device will switch off again.
- 6.1.5. High pressure remains in the system.
- 6.1.6. Lock the lever on the pressure gun. See fig.6.
- 6.1.7. Push the spray lance into the pressure gun and fasten it by turning it through 90°. See fig.7.



- 6.1.8. Unlock the lever on the pressure gun.



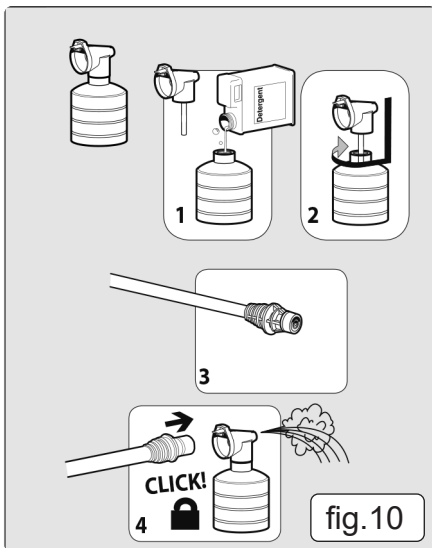
- 6.1.9. Pull on the lever of the pressure gun; the device will switch on. See fig.8.
- ☐ **WARNING:** Appliance with fluid under pressure.
- 6.1.10. Keep a firm hold on the gun and be prepared to take the kickback pressure.



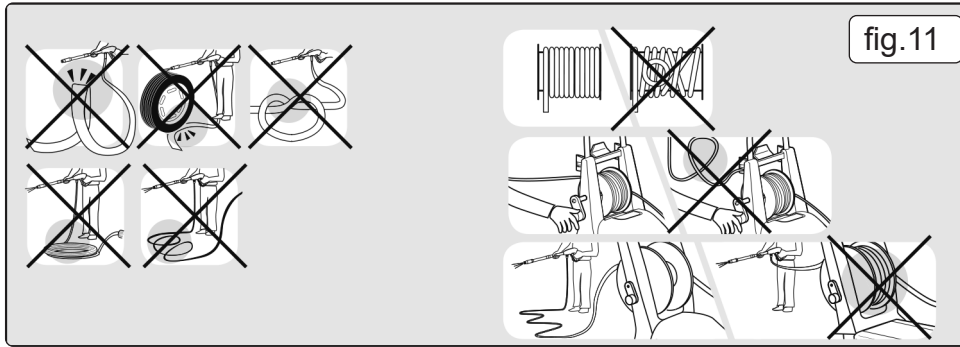
- 6.1.11. The nozzle is part of the lance and cannot be adjusted or removed. See fig.9.

6.2. DETERGENT SUCTION

- 6.2.1. Attach detergent bottle to fixed nozzle. (See fig.10).

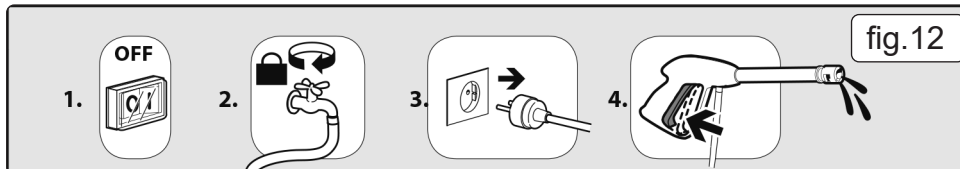


6.3. HIGH PRESSURE HOSE



6.3.1. Use the pressure washer only if the hose is completely uncoiled and extended. See fig.11.

6.4. SWITCHING OFF



6.4.1. Switch off the machine (fig.12.1).

6.4.2. Turn off the water supply (fig.12.2).

6.4.3. Unplug from the electrical socket (fig.12.3).

6.4.4. Squeeze trigger to release any pressure left in the hose and gun (fig.12.4).

6.5. T.S. TOTAL STOP

NOTE: Total Stop, which stops the machine during the bypass phase. To start the water cleaner, it is therefore necessary to set the switch on position (I) "ON"; after that press the pistol trigger: the Total Stop will start the machine and will stop it automatically when the trigger is released. It is advisable to put on the safety of the pistol trigger whenever the machine is stopped, in order to avoid unintentional starting.

6.5.1. Any automatic start of the machine without pressing the gun trigger is attributable to air bubbles in the water or other similar phenomena which **DO NOT** imply the existence of any defects in the machine.

* **DO NOT** leave the appliance unattended during the standby for more than 5 minutes. Contrarily, for the safety of the appliance it is necessary to re-turn the switch into the (0) OFF position.

6.5.2. Please check that the coupling of the high pressure hose with the appliance and the gun supplied as standard equipment made correctly, that is to say without any water leak.

7. MAINTENANCE

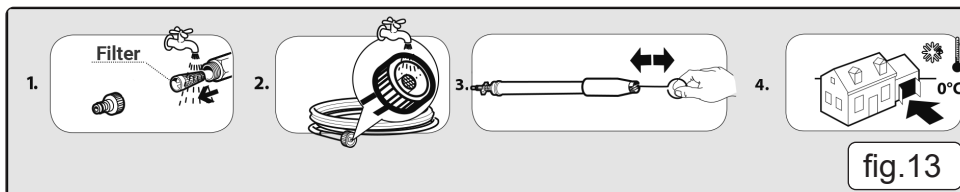
7.1. There are no user serviceable parts in this unit.

WARNING: the machine shall be disconnected from its power source, by removing the plug from the socket-outlet, during cleaning or maintenance.

WARNING: DO NOT spray the appliance with water and **DO NOT** use detergents or aggressive solvents. The machine can be damaged.

Clean the exterior part of the machine with a dry cloth.

7.2. STORAGE



7.2.1. Move the machine only by grasping the carrying handle.

7.2.2. Before storing clean the filter (fig.13.1), dry the hose (fig.13.2), and clean the nozzle (fig.13.3).

7.2.3. Store the appliance and the accessories in a frost safe room (fig.13.4).

8. TROUBLESHOOTING

8.1. APPLIANCE DOES NOT WORK

8.1.1. Check whether the voltage shown on the rating plate corresponds to that of the power source.

8.1.2. Check the connector cable for damage. Appliance does not reach operational pressure

8.1.3. Vent the appliance: allow the pump to operate without the high-pressure hose until water appears at the high-pressure outlet without any more bubbles. Then reattach the high-pressure hose.

8.1.4. Clean the strainer in the water connection.

8.1.5. Clean the filter placed inside the hose coupling.

8.1.6. Check the inlet water flow rate.

8.1.7. Check all inlet pipes to the pump for leaks or blockage.

8.2. STRONG PRESSURE FLUCTUATIONS

8.2.1. Clean the high-pressure nozzle. Remove dirt from the nozzle hole with a needle and then rinse out with water from the front.

8.3. PUMP LEAKS

- 8.3.1. 10 drops per minute are permissible. In the case of more serious leakage, you should contact the authorized customer service.
Replacement parts
- 8.3.2. Use only original spare parts or spare parts suggested by the manufacturer.



ENVIRONMENT PROTECTION

Recycle unwanted materials instead of disposing of them as waste. All tools, accessories and packaging should be sorted, taken to a recycling centre and disposed of in a manner which is compatible with the environment. When the product becomes completely unserviceable and requires disposal, drain any fluids (if applicable) into approved containers and dispose of the product and fluids according to local regulations.



WEEE REGULATIONS

Dispose of this product at the end of its working life in compliance with the EU Directive on Waste Electrical and Electronic Equipment (WEEE). When the product is no longer required, it must be disposed of in an environmentally protective way. Contact your local solid waste authority for recycling information.

Note: It is our policy to continually improve products and as such we reserve the right to alter data, specifications and component parts without prior notice.

Important: No Liability is accepted for incorrect use of this product.

Warranty: Guarantee is 12 months from purchase date, proof of which is required for any claim.

Sealey Group, Kempson Way, Suffolk Business Park, Bury St Edmunds, Suffolk. IP32 7AR



01284 757500



01284 703534



sales@sealey.co.uk



www.sealey.co.uk