



STEEL BODY COMBINATION PADLOCK 40MM

MODEL NO: **PL301C.V2**

Thank you for purchasing a Sealey product. Manufactured to a high standard, this product will, if used according to these instructions, and properly maintained, give you years of trouble free performance.

IMPORTANT: PLEASE READ THESE INSTRUCTIONS CAREFULLY. NOTE THE SAFE OPERATIONAL REQUIREMENTS, WARNINGS & CAUTIONS. USE THE PRODUCT CORRECTLY AND WITH CARE FOR THE PURPOSE FOR WHICH IT IS INTENDED. FAILURE TO DO SO MAY CAUSE DAMAGE AND/OR PERSONAL INJURY AND WILL INVALIDATE THE WARRANTY. KEEP THESE INSTRUCTIONS SAFE FOR FUTURE USE.



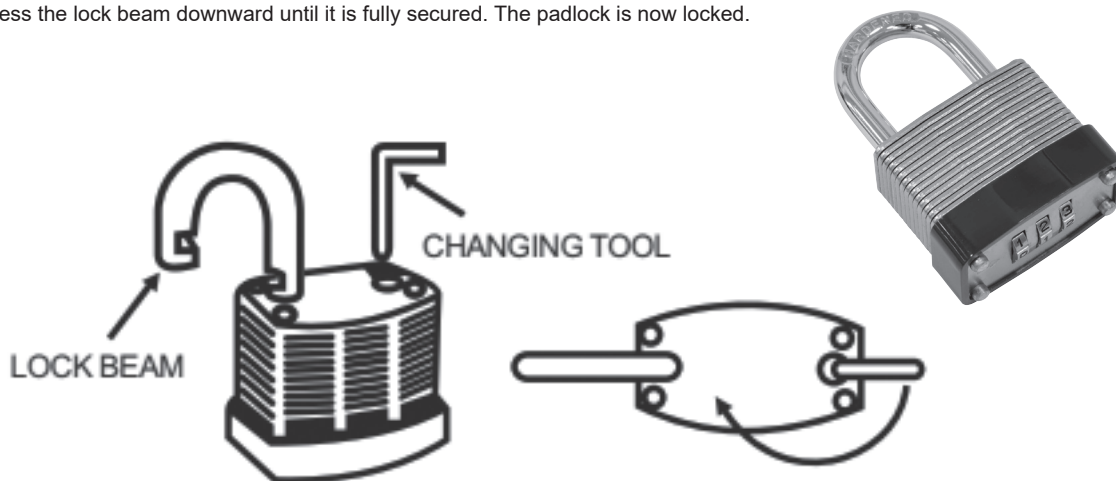
Refer to
instruction
manual

1. SAFETY

- 1.1. Keep the Code Secure: Do not share your combination with others unless absolutely necessary.
- 1.2. Avoid Common Codes: Refrain from using easily guessable combinations such as sequential numbers (e.g., 123) or repetitive digits (e.g., 111).
- 1.3. Memorize Your Code: Write down your combination in a secure place if needed, but avoid storing it in easily accessible locations.
- 1.4. Regularly Check for Damage: Inspect the padlock periodically for signs of wear, rust, or tampering.

2. OPERATION

- 2.1. **UNLOCKING THE PADLOCK** To unlock the padlock, ensure that the original code, 000, is aligned with the designated mark. Depress the lock beam, then release it. The mechanism will automatically disengage. If the lock does not open immediately, gently pull the beam upward.
- 2.2. **SETTING A NEW CODE** To set a new combination, first ensure the padlock is in an unlocked state, with the current code properly aligned at the mark. Insert the changing tool into the designated hole in the lock beam until it is securely engaged. Rotate the tool 180 degrees to activate the code-setting mode. Adjust the numerical dials to reflect the new desired combination, ensuring alignment with the bottom marking. Once the new combination is set, rotate the changing tool back to its original position. The updated code is now successfully configured.
- 2.3. **LOCKING THE PADLOCK** To lock the padlock, first ensure it is in an unlocked state. Rotate the numerical dials to scramble the code. Then, press the lock beam downward until it is fully secured. The padlock is now locked.



ENVIRONMENT PROTECTION

Recycle unwanted materials instead of disposing of them as waste. All tools, accessories and packaging should be sorted, taken to a recycling centre and disposed of in a manner which is compatible with the environment. When the product becomes completely unserviceable and requires disposal, drain any fluids (if applicable) into approved containers and dispose of the product and fluids according to local regulations.



REGISTER YOUR
PURCHASE HERE

Note: It is our policy to continually improve products and as such we reserve the right to alter data, specifications and component parts without prior notice.

Important: No Liability is accepted for incorrect use of this product.

Warranty: Guarantee is 24 months from purchase date, proof of which is required for any claim.

Jack Sealey Ltd t/a Sealey Group, Kempson Way, Suffolk Business Park, Bury St Edmunds, Suffolk, IP32 7AR UK

Jack Sealey (EU) Ltd t/a Sealey Group, Farney Street, Carrickmacross, Co. Monaghan, A81 PK68 Ireland

Tel: 01284 757500 • Email: sales@sealey.co.uk • Web: www.sealey.co.uk