



INSTRUCTIONS FOR:

# 75LTR WET & DRY INDUSTRIAL VACUUM CLEANER TWIN MOTOR STAINLESS DRUM 1200/2400W

MODEL NO: **PC85**

Thank you for purchasing a Sealey product. Manufactured to a high standard, this product will, if used according to these instructions, and properly maintained, give you years of trouble free performance.

**IMPORTANT: PLEASE READ THESE INSTRUCTIONS CAREFULLY. NOTE THE SAFE OPERATIONAL REQUIREMENTS, WARNINGS & CAUTIONS. USE THE PRODUCT CORRECTLY AND WITH CARE FOR THE PURPOSE FOR WHICH IT IS INTENDED. FAILURE TO DO SO MAY CAUSE DAMAGE AND/OR PERSONAL INJURY AND WILL INVALIDATE THE WARRANTY. KEEP THESE INSTRUCTIONS SAFE FOR FUTURE USE.**



Refer to the instruction manual

## 1. SAFETY

### 1.1. ELECTRICAL SAFETY

**WARNING!** It is the responsibility of the owner and the operator to read, understand and comply with the following:

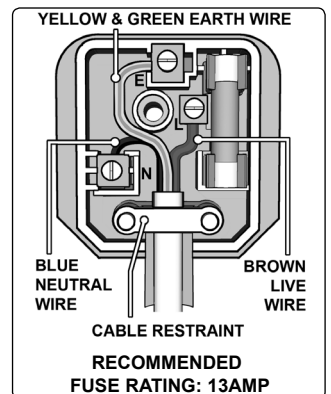
You must check all electrical products, before use, to ensure that they are safe. You must inspect power cables, plugs, sockets and any other connectors for wear or damage. You must ensure that the risk of electric shock is minimised by the installation of appropriate safety devices. A Residual Current Circuit Breaker (RCCB) should be incorporated in the main distribution board. We also recommend that a Residual Current Device (RCD) is used. It is particularly important to use an RCD with portable products that are plugged into a supply which is not protected by an RCCB. If in any doubt consult a qualified electrician. You may obtain a Residual Current Device by contacting your Sealey dealer.

**You must** also read and understand the following instructions concerning electrical safety.

- 1.1.1. The **Electricity at Work Act 1989** requires that all portable electrical appliances, if used on business premises, are tested by a qualified electrician, using a Portable Appliance Tester (PAT), at least once a year.
- 1.1.2. The **Health & Safety at Work Act 1974** makes owners of electrical appliances responsible for the safe condition of those appliances and the safety of the appliance operators. **If in any doubt about electrical safety, contact a qualified electrician.**
- 1.1.3. Ensure that the insulation on all cables and on the appliance is safe before connecting it to the power supply. See 1.1.1. and 1.1.2. and use a Portable Appliance Tester.
- 1.1.4. Ensure that cables are always protected against short circuit and overload.
- 1.1.5. Regularly inspect power supply cables and plugs for wear or damage and check all connections to ensure that none is loose.
- 1.1.6. **Important:** Ensure that the voltage marked on the appliance matches the power supply to be used and that the plug is fitted with the correct fuse - see fuse rating at right.
- 1.1.7. **DO NOT** pull or carry the appliance by the power cable.
- 1.1.8. **DO NOT** pull the plug from the socket by the cable.
- 1.1.9. **DO NOT** use worn or damaged cables, plugs or connectors. Immediately have any faulty item repaired or replaced by a qualified electrician. When a BS 1363/A UK 3 pin plug is damaged, cut the cable just above the plug and **dispose of the plug safely**. Fit a new plug according to the following instructions (UK only).
  - a) Connect the **GREEN/YELLOW earth wire to the earth terminal 'E'**.
  - b) Connect the **BROWN live wire to the live terminal 'L'**.
  - c) Connect the **BLUE neutral wire to the neutral terminal 'N'**.
  - d) **After wiring, check that there are no bare wires, that all wires have been correctly connected, that the cable outer insulation extends beyond the cable restraint and that the restraint is tight.**

Double insulated products, which are always marked with this symbol , are fitted with live (brown) and neutral (blue) wires only. To rewire, connect the wires as indicated above - **DO NOT** connect either wire to the earth terminal.

**NB! The output socket on this product is earthed.**
- 1.1.10. Products which require more than 13amps are supplied without a plug. In this case you must contact a qualified electrician to ensure that a suitably rated supply is available. We recommend that you discuss the installation of an industrial round pin plug and socket with your electrician.
- 1.1.11. If an extension reel is used it should be fully unwound before connection. A reel with an RCD fitted is preferred since any appliance plugged into it will be protected. The cable core section is important and should be at least 1.5mm<sup>2</sup>, but to be absolutely sure that the capacity of the reel is suitable for this product and for others which may be used in the other output sockets, we recommend the use of 2.5mm<sup>2</sup> section cable. If an extension reel is to be used outdoors, ensure it is marked for outdoor use.



### 1.2 GENERAL SAFETY

- ✓ Disconnect the cleaner from the power supply before servicing, changing accessories, or performing any maintenance.
- ✓ Use only genuine parts and accessories. Unauthorised parts and accessories may be dangerous and will invalidate your warranty.
- ✓ Maintain the cleaner in good condition. Use an authorised agent for servicing. Keep machine clean, but **DO NOT** use solvents.
- ✗ **DO NOT** operate the unit without the locking cartridge filter in place (except when wet vacuuming when the foam sleeve filter is used). **Using the cleaner without a locking cartridge filter will cause machine faults and will invalidate your warranty.**
- ✓ Wear protective clothing and gloves.
- ✗ **DO NOT** allow children or untrained persons to operate the cleaner.
- ✗ **DO NOT** place attachments close to your face (especially eyes, ears, etc). **DO NOT** point the hose end at other persons or animals.
- ▲ **DANGER! DO NOT** vacuum hot or glowing ash, cigarette ends, inflammable, explosive, corrosive or other dangerous substances.
- ✗ **DO NOT** leave machine running unattended. Turn power supply OFF and **DO NOT** leave the vicinity until motor has come to a complete stop.
- ✗ **DO NOT** operate the cleaner while under the influence of drugs, alcohol or impairing medication, or if you are tired.
- ✗ **DO NOT** use the cleaner in the rain or in very damp conditions.
- ✗ **DO NOT** use the cleaner for a task it is not designed to perform.

❑ **WARNING!** The warnings, cautions and instructions in this manual cannot cover all possible conditions and situations that may occur. It must be understood by the operator that common sense and caution are factors which cannot be built into this product, but must be applied by the operator.

**NOTE:** This appliance can be used by children aged from 8 years and above and persons with reduced physical, sensory or mental capabilities or lack of experience and knowledge if they have been given supervision or instruction concerning use of the appliance in a safe way and understand the hazards involved. Children shall not play with the appliance. Cleaning and user maintenance shall not be made by children without supervision.

## 2. INTRODUCTION

The extremely efficient twin motor offers superior vacuuming power to collect any type of solid from dust to rubble. Suitable for industrial and commercial applications where extra capacity and power are required to clean large areas or large volumes of waste. Features two 1200W high power induction motors, auxiliary 900W power socket, each with separate control switch, high capacity stainless steel drum and triple filtration system. The trolley has four Ø78mm free moving castor wheels for easy manoeuvrability, large bumper, power cable winder and accessories holder. Model is also a powerful liquid vacuum cleaner and is fitted with a gravity feed drainage pipe. Supplied with a full Ø45mm accessory kit.

## 3. SPECIFICATION

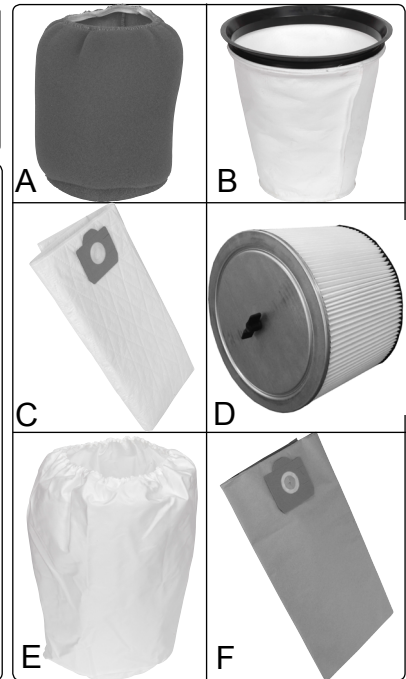
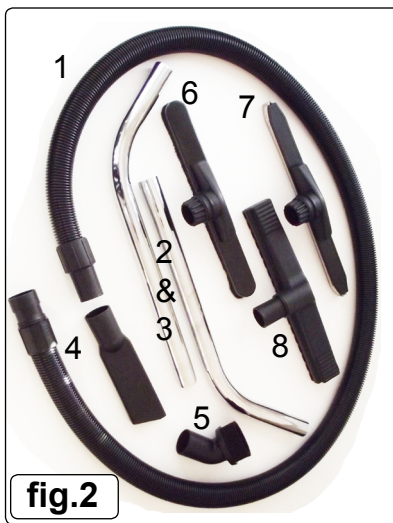
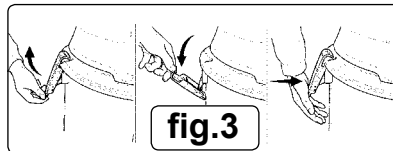
<b>Model No:</b> .....	<b>PC85</b>	<b>Accessories and optional filters (fig.4)</b>	
<b>Motor Power:</b> .....	2400W	A) Sponge Foam Filter: .....	PC85.SF
<b>Supply:</b> .....	230V	B) Polyester Ring Filter: .....	PC85.PF
<b>Drum Size:</b> .....	75ltr	C) Fine Particle Polyester Bag Filter (pack of 5): .....	PC85.PB
<b>Airflow:</b> .....	340mtr <sup>3</sup> /hr	D) Cartridge Filter: .....	PC85.CF
<b>Weight:</b> .....	22.2kg	E) Nylon Bag: .....	PC85.NB
		F) Dust Collection Bag (pack of 5): .....	PC85.DB

## 4. CONTENTS

### 4.1. Carton content

4.1.1. Undo tank clasps (fig.3) and lift off the top section (fig.5).

4.1.2. Remove contents from inside the tank (fig.2). Check and identify each component as listed below fig.1 and fig.2.



Item number	Description	Qty
1	Flexible hose with swivel connectors	1
2	Cranked vacuum tube	1
3	Cranked vacuum tube	1
4	Wedge nozzle	1
5	Brush cobweb nozzle	1
6	Dry carpet brush nozzle	1
7	Wet floor nozzle	1
8	Dry floor plain nozzle	1
9	Handlebar	1

fig.4

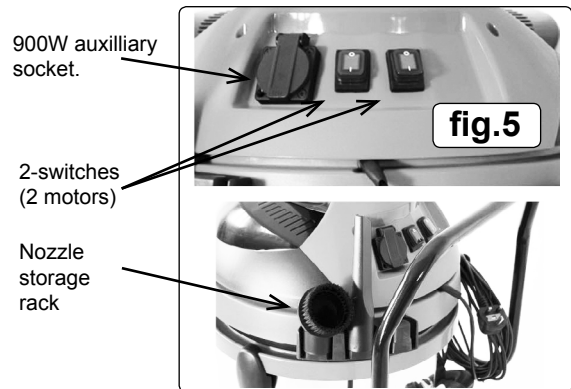


fig.5

## 5. ASSEMBLY

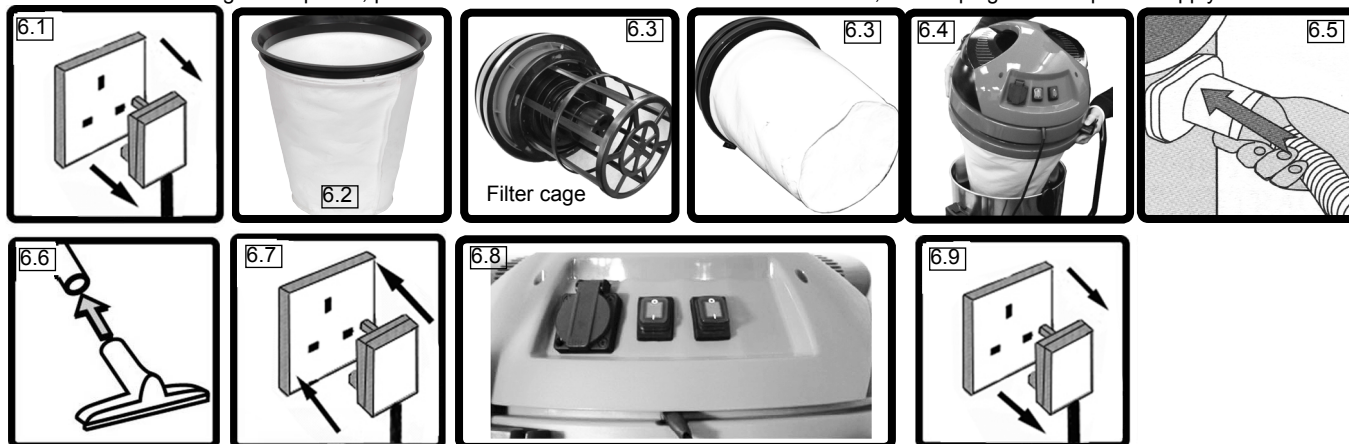
5.1. Fit the "snap in" handlebar item 9 (fig.1).

5.2. Fit the required filter (fig.4). A = sponge for wet vacuuming; B = polyester ring for dry vacuuming; C = dust collection bag for dry fine dust vacuuming.

5.3. Refit the top section and fasten the two clasps (fig.3).

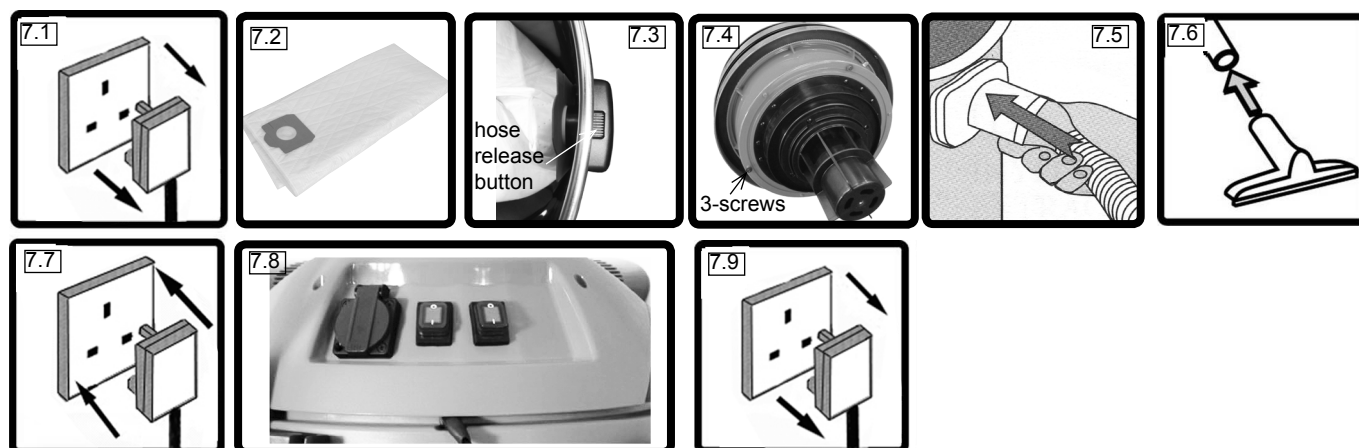
## 6. DRY VACUUM CLEANING

- ❑ **WARNING!** Ensure you read, understand and apply Section 1 'Safety Instructions'.  
Reminder: **DO NOT** vacuum hazardous substances. Use of an incorrect filter will invalidate your warranty.
- 6.1. Ensure the machine is unplugged from the power supply.
- 6.2. For dry vacuuming fit the polyester ring filter item "B" over the filter cage shown in 6.3.
- 6.4. Replace the top section onto the tank together with the filter, and clip in place.
- 6.5. Insert the larger end of the flexible hose into the front inlet on the tank fully and an "engagement click" will be heard.
- 6.6. Push the required attachment onto the free end of the hose.
- 6.7. Ensure the switch is 'Off' ("O") before plugging into the power supply.
- 6.8. Switch the motor/motors on to vacuum, position "I".
- 6.9. When vacuuming is completed, push the "O" button/buttons to switch the vacuum off, then unplug from the power supply.



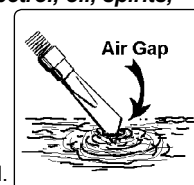
## 7. FINE DUST VACUUMING

- ❑ **WARNING!** Ensure you read, understand and apply Section 1 'Safety Instructions'.  
Reminder: **DO NOT** vacuum hazardous substances. Use of an incorrect filter will invalidate your warranty.
- 7.1. Ensure the machine is unplugged from the power supply.
- 7.2. For fine dust dry vacuuming fit the dust collection bag filter item "C".
- 7.3. The opening in the bag has a flexible rubber neck which will shroud the internal nozzle, terminating in a recessed annular ring.
- 7.4. Remove the filter cage by slackening the three screws in the keyhole slots and twist cage. Replace the top section onto the tank, and clip in place.
- 7.5. Insert the larger end of the flexible hose into the front inlet on the tank fully and an "engagement click" will be heard.
- 7.6. Push the required attachment onto the free end of the hose.
- 7.7. Ensure the switch is 'Off' ("O") before plugging into the power supply.
- 7.8. Switch the motor/motors on to vacuum, position "I".
- 7.9. When vacuuming is completed, push the "O" button/buttons to switch the vacuum off, then unplug from the power supply.



## 8. WET VACUUM CLEANING

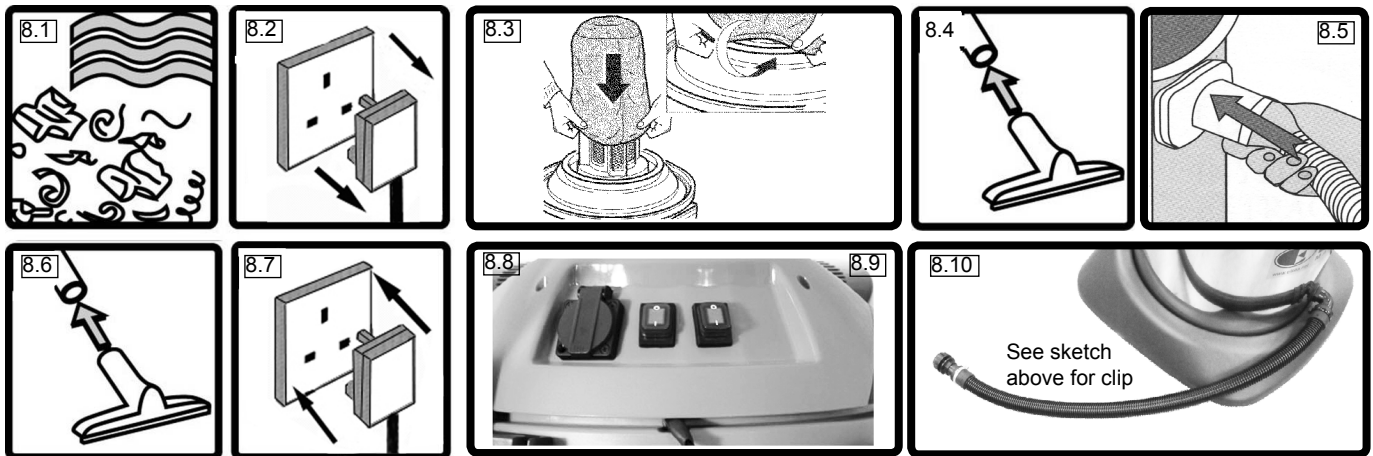
- ❑ **WARNING!** Ensure you read, understand and apply Section 1 'Safety Instructions'.  
Reminder: **Remove plug from power supply before opening unit. DO NOT vacuum solvents, explosives, inflammable and/or hazardous liquids such as petrol, oil, spirits, paint, thinners, acids etc. Use of an incorrect filter will invalidate your warranty.**
- 8.1. Make sure the tank is clean and free from dust and dirt.
- 8.2. Ensure the machine is unplugged from the power supply.
- 8.3. For wet vacuum cleaning the foam filter ("A") must be used. Remove filter cage (7.4), remove any paper filter fitted. Ensure the foam filter is clean and dry. Place the foam filter ("A") over the exposed neck and adjust carefully.
- 8.4. Re-position the head onto the tank, and clip into place.
- 8.5. Insert the larger end of the flexible hose into the front inlet on the tank fully and an engagement "click" will be heard.
- 8.6. Fit the required accessories or tubes to the suction hose.
- 8.7. Ensure the switch is 'Off' ("O") before plugging into the power supply.
- 8.8. Switch the motor/motors on to vacuum, position "I".
- 8.9. When vacuuming is completed, push the "O" button/buttons to switch the vacuum off, then unplug from the power supply.
- 8.10. After use, empty the tank via the drain hose, and tip any remaining. Re-clip the hose and dry the tank with a cloth.
- ❑ **WARNING!** The tank is not designed for liquid storage. Always empty liquids fully after use.  
**Never store the cleaner with liquid in the tank**



Drain hose clip



8.11. To vacuum large quantities of liquid, from a sink or tank etc., **DO NOT** immerse the nozzle completely in the liquid; leave a gap at the top of the nozzle opening to allow an air inflow (see image on previous page). The machine is fitted with a float valve which blocks the suction action when the tank has reached its maximum capacity. The user will notice an increase in motor noise. When this occurs, turn off the machine and disconnect from the power supply. Either remove the head from the tank and empty the liquid into a suitable receptacle or drain via the fitted drain hose. To continue vacuuming, refit the head, if removed and proceed. After wet vacuuming, turn the machine off and remove the plug from the power supply. Empty the tank and clean/dry the inside and outside before storage, see 9.2.2. and 9.2.3..



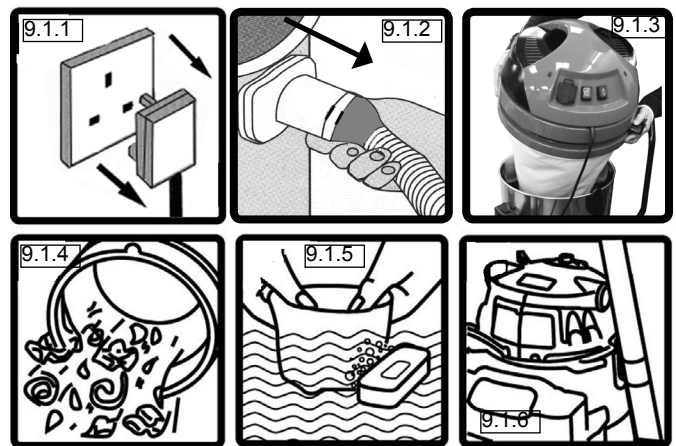
## 9. MAINTENANCE

### 9.1. GENERAL MAINTENANCE.

- 9.1.1. Ensure the machine is unplugged from the power supply.
- 9.1.2. Disconnect the hose from the container.
- 9.1.3. Undo the clasps and remove motor head from the container.
- 9.1.4. Clear out any dirt or debris from the container and hose.
- 9.1.5. Clean the foam and polyester filters by washing them in a mild soapy solution.
- 9.1.6. Check that the suction tubes operate smoothly, and check the power cable to make sure it has not received any damage.

### 9.2. STORAGE

- 9.2.1. Run the vacuum cleaner until the tubes and hose are clean and dry.
- 9.2.2. Switch off the unit and unplug the unit from the power supply. Then empty the main tank.
- 9.2.3. Remove the filter, clean and allow to dry.



## 10. TROUBLESHOOTING

Symptom	Possible causes	Solutions
Vacuum will not operate	No power supply	Check power supply - cable, breakers, fuses.
	Faulty power cable	Unplug and check the power cable. If damaged have it replaced by your local Sealey dealer.
	Container full	Empty container
Dust expelled from the motor cover	Dust bag/filter missing or damaged	Fit new dust bag/filter if damaged.
Reduced efficiency and increased motor/speed vibration	There is a blockage in the nozzle or hose or in the container inlet. Filter blocked/ dust bag full.	Check nozzle, hose and container inlets and clear any blockages found. Fit new dust bag. Clean or replace filter.

<p style="text-align: center;"><b>Environmental Protection</b></p> <p>Recycle unwanted materials instead of disposing of them as waste. All tools, accessories and packaging should be sorted, taken to a recycling centre and disposed of in a manner which is compatible with the environment. When the product becomes completely unserviceable and requires disposal, drain off any fluids (if applicable) into approved containers and dispose of the product and the fluids according to local regulations.</p>	<p style="text-align: center;"><b>WEEE Regulations</b></p> <p>Dispose of this product at the end of its working life in compliance with the EU Directive on Waste Electrical and Electronic Equipment (WEEE). When the product is no longer required, it must be disposed of in an environmentally protective way. Contact your local solid waste authority for recycling information</p>
---	---

**Parts support is available for this product. To obtain a parts listing and/or diagram, please log on to [www.sealey.co.uk](http://www.sealey.co.uk), email [sales@sealey.co.uk](mailto:sales@sealey.co.uk) or telephone 01284 757500.**

**NOTE:** It is our policy to continually improve products and as such we reserve the right to alter data, specifications and component parts without prior notice.  
**IMPORTANT:** No liability is accepted for incorrect use of this product.

**WARRANTY:** Guarantee is 12 months from purchase date, proof of which will be required for any claim.



	<p><b>Sole UK Distributor, Sealey Group,</b> Kempson Way, Suffolk Business Park, Bury St. Edmunds, Suffolk, IP32 7AR</p>	<p> 01284 757500  01284 703534</p>	<p> <a href="http://www.sealey.co.uk">www.sealey.co.uk</a>  <a href="mailto:sales@sealey.co.uk">sales@sealey.co.uk</a></p>
--	--	--	--