



WET & DRY VALETING MACHINE WITH ACCESSORIES, 20L, 1200W

MODEL NO: **PC310.V3**

Thank you for purchasing a Sealey product. Manufactured to a high standard, this product will, if used according to these instructions, and properly maintained, give you years of trouble free performance.



IMPORTANT: PLEASE READ THESE INSTRUCTIONS CAREFULLY. NOTE THE SAFE OPERATIONAL REQUIREMENTS, WARNINGS & CAUTIONS. USE THE PRODUCT CORRECTLY AND WITH CARE FOR THE PURPOSE FOR WHICH IT IS INTENDED. FAILURE TO DO SO MAY CAUSE DAMAGE AND/OR PERSONAL INJURY AND WILL INVALIDATE THE WARRANTY. KEEP THESE INSTRUCTIONS SAFE FOR FUTURE USE.

1. SAFETY

1.1. ELECTRICAL SAFETY

- ☐ **WARNING!** It is the user's responsibility to check the following:
 - ✓ Check all electrical equipment and appliances to ensure that they are safe before using.
 - ✓ Inspect power supply leads, plugs and all electrical connections for wear and damage.
 - ✓ Ensure that the insulation on all cables and on the appliance is safe before connecting it to the power supply.
 - ✗ **DO NOT** use worn or damaged cables, plugs or connectors.
 - ✓ Ensure that any faulty item is repaired or replaced immediately by a Sealey qualified technician.
 - ✓ If the cable or plug is damaged during use, switch off the electricity supply and remove from use.
 - ✓ Sealey recommend that an RCD (Residual Current Device) is used with all electrical products.
- Important:** Ensure that the voltage rating on the appliance suits the power supply to be used and that the plug is fitted with the correct fuse.
- ✗ **DO NOT** pull or carry the appliance by the power cable.
- ✗ **DO NOT** pull the plug from the socket by the cable.

1.2. GENERAL SAFETY

- ✓ Children from age 8 years and above, persons with reduced physical, sensory, or mental capabilities those with lack of experience and knowledge can use the appliance, if they have been given supervision or instruction concerning use of the appliance in a safe way to understand the hazards involved.
- ✓ Children shall **NOT** play with the appliance
- ✓ Cleaning and user maintenance on the appliance shall not be made by children without supervision.
- ✓ The plug must be removed from the socket-outlet before cleaning or maintaining the appliance.
- ✓ Disconnect the appliance from its power source during service and when replacing parts and, if that the removal of the plug is foreseen, it shall be clearly indicated that the removal of the plug has to be such that an operator can check from any of the points to which he has access that the plug remains removed.
- ✓ Before operation, please check if the local power supply is the same as it's rated in the specification.
- ✓ If the supply cord is damaged, it must be replaced by the manufacturer, its service agent or similarly qualified persons in order to avoid a hazard.
- ✓ Remember to turn off the appliance and remove the plug every time after use or when being repaired.
- ✓ Keep machine away from strong sunlight and high temperatures in case plastic is damaged.
- ✗ **DO NOT** use this machine as a pump.
- ✗ **DO NOT** pull the appliance by the hose.
- ✗ **DO NOT** stand on the hose or appliance.
- ✗ **DO NOT** immerse the head unit in water or wash with water in case that water goes into the electronic parts and causes personal injury.
- ✗ **DO NOT** use this appliance in any combustible and explosive places in case the motor sparks and causes a fire.
- ✗ **DO NOT** jam the air inlet as this may cause temperature rises and damage to the motor.
- ✗ **DO NOT** use the appliance to collect combustible and explosive materials such as petrol, oils etc.
- ✗ **DO NOT** use the appliance to collect sharp objects like pins and screws as this may damage internal components.
- ✗ **DO NOT** use for ash, hot embers etc.
- ✗ **DO NOT** use the appliance to collect powders that can easily block the ventilation holes and damage the motor.
- ✗ **DO NOT** overturn the machine in case water goes into the motor and damages the motor.
- ✗ **DO NOT** use a cleaning agent or detergent containing solvent.
- ✗ **DO NOT** collect combustible and explosive objects such as glowing cigarettes, gasoline, etc.
- ✗ **DO NOT** collect objects which can easily attach on the filter such as calcareousness powder, gesso and graphite powder because those will block the ventilation damage motor.

2. INTRODUCTION

Powerful pump forces cleaning detergent into fabric/carpet and 1200W suction power leaves surface virtually dry after one pass. Suitable for cleaning carpets, car interiors, fabrics and upholstery. 20L Plastic drum with built-in cable storage hook, extension tube holders plus additional accessory storage slots. Safety shut off float valve prevents the tank capacity being exceeded during wet vacuuming, protecting the motor. Large 5L external detergent tank for cleaning larger areas before needing to refill. Filter cleaning function reverses the airflow to effectively clean the filter and restores up to 80% suction. Fitted with two fixed wheels and two swivel castors for easy manoeuvrability. Supplied with 3 x extension tubes, carpet brush, large valet brush, small valet brush, crevice tool, HEPA filter and sponge filter.

3. SPECIFICATION

MODEL NO:	PC310 .V3
Drum Size:	20L
Drum Type:	Plastic
Filter Type:	HEPA Cartridge Filter & Sponge Filter
Fuse Rating:	7A
Motor Power:	1200W
Power Supply Cable Length:	3.8m
Replacement Parts:	PC310CF - Cartridge Filter
Supply:	230V
Weight:	6.1kg

ACCESSORIES

OPTIONAL ACCESSORIES

PCU01 Foam filter x10 PCU02 HEPA filter
PCU04 Dust collection bags x 5

RECOMMENDED DETERGENT

Carpet/Upholstery Detergent 2.5L

• (Single) VMR9225

Carpet/Upholstery Detergent 5L

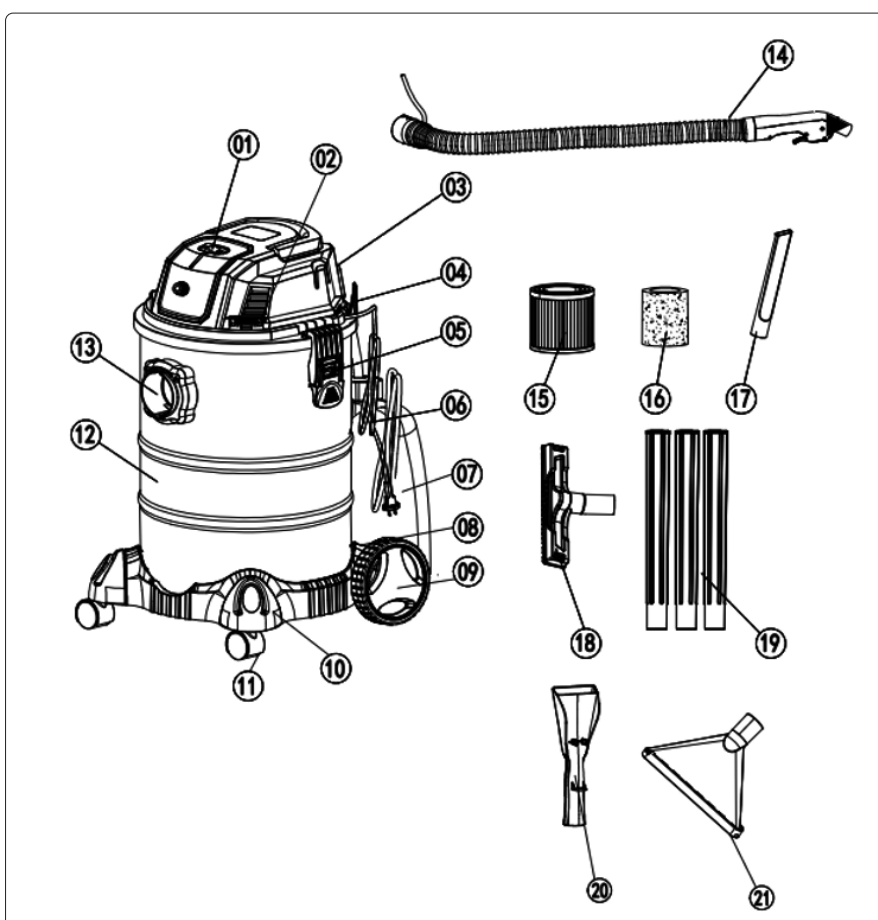
• (Pack of 4) VMR925

• (Single) VMR925S

Carpet/Upholstery Detergent 25L

• (Single) VMR92250

4. CONTENT



1	On/Off switch	8	Rear wheel seat	15	Hepa filter
2	Filter cleaning button	9	Rear wheel	16	Sponge filter
3	Air outlet hole(for blowing)	10	Front wheel seat	17	Crevice nozzle
4	Cable hook	11	Wheel	18	Floor nozzle
5	Barrel clip	12	Stainless steel tank	19	Plastic tubes:3pcs
6	Cable	13	Tank inlet	20	Washing brush
7	Water tank	14	Hose	21	Triangle carpet brush

5. ASSEMBLY

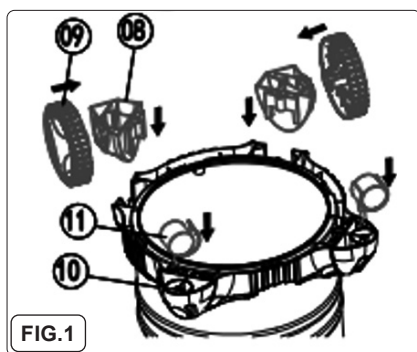


FIG.1

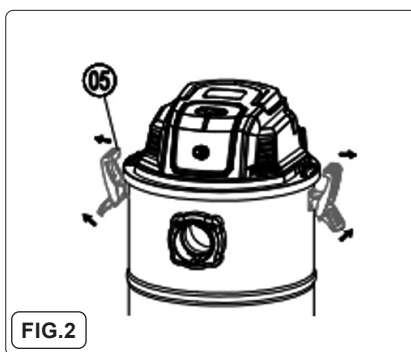


FIG.2

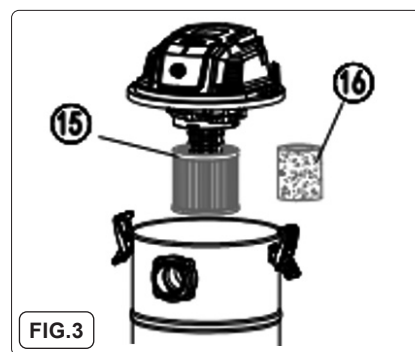


FIG.3

5.1. BASE & WHEELS (FIG.1)

Press the 2pcs front wheels into the base position, and screw on the 2pcs rear wheels.

5.2. BARREL CLIPS (FIG.2)

Unclip the lower portion of the barrel clip and pull out the higher point of clip so as to remove barrel.

5.3. FILTERS (FIG.3).

Fit the HEPA filter or sponge filter. Insert into the head unit.

Before cleaning dry dust, lock the dust bag onto the suction port.

5.4. HOSE, TUBE, BRUSH & DETERGENT PIPE (FIG.4)

Fit and then check the tightness of the following parts in case of suction and water leakage.

5.5. DETERGENT

Fill the detergent tank with detergent; the max volume is 5L with 0.5L increments marked on the side.

NOTE: Thick detergent should be diluted or the pipe may block.

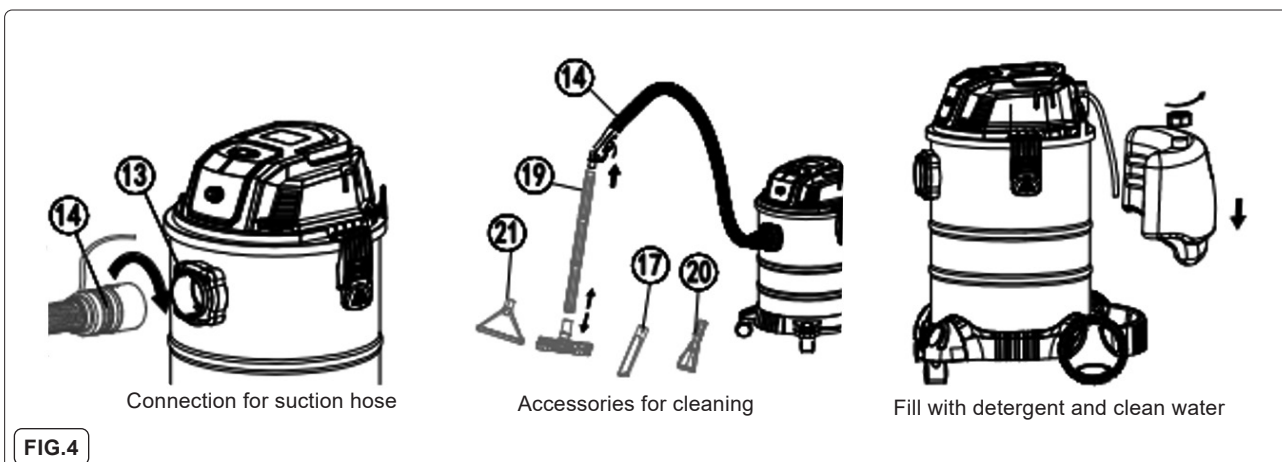


FIG.4

6. OPERATION

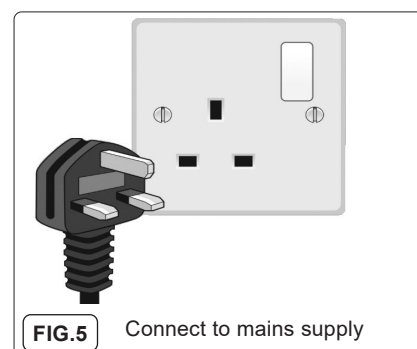


FIG.5

Connect to mains supply

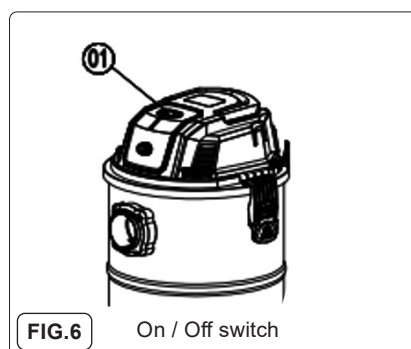


FIG.6

On / Off switch

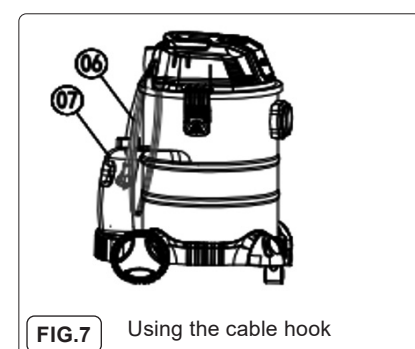


FIG.7

Using the cable hook

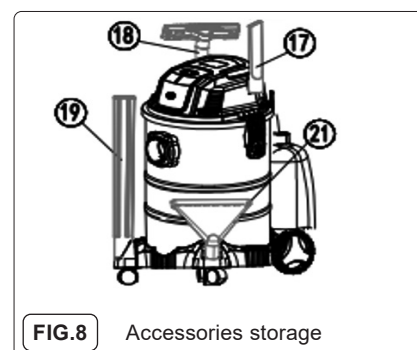


FIG.8

Accessories storage

NOTE: BEFORE USE

6.1. SWITCH ON MAINS SUPPLY (FIG.5).

6.2. ON /OFF SWITCH (FIG.6)

The switch has two options:

(I) - Turns the unit ON. (O) - Turns the unit OFF.

Fig.7 and Fig.8 show storage for after use.

6.2.1. FILTER-CLEANING FUNCTION

If using to clean thick dust, such as that in a garden, workshop or newly decorated room, the filters will get clogged easily. In this case, press the filter-cleaning button on the back of the unit five times. Suction power should improve afterwards.

6.3. WET OPERATION

NOTE: The tube drawing the water/detergent must be submerged for wet vacuuming.

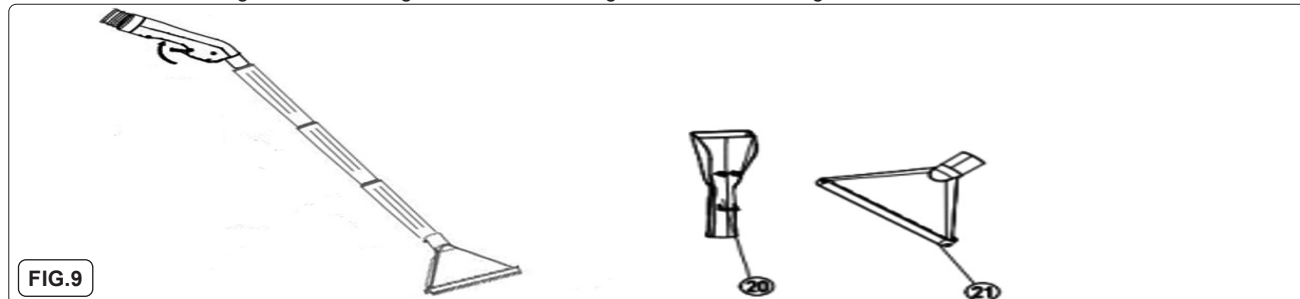


FIG.9

6.4. COMPONENTS FOR WET CLEANING

6.4.1. The washing brush (Fig. 9.20) and the triangular carpet brush (Fig. 9.21) can either be connected directly to the hose or attached via the plastic tubes. Press the trigger to clean fabric, blankets, carpets, and smooth floors using the wet cleaning function.

Note: Ensure there is liquid in the clean water container before switching on the device. Always check the liquid level in the clean water container during each operation.

6.4.2. CARPET & SOFA WASHING

Choose the corresponding brush for cleaning. Ensure there is enough detergent in the tank for best performance. Remove the dust bag. Ensure large particles of dust are removed before washing. Press the button of the detergent spray gun to spray detergent.

NOTE: on the first use, hold for 10 seconds to allow the detergent time to pump out. Move the brush evenly and slowly across the carpet or sofa. Release the button on the backstroke to allow for vacuuming of waste water.

6.4.3. FLOOR CLEANING

Use the wet & dry floor brush for cleaning floor, dust, rubbish, spillage, etc.

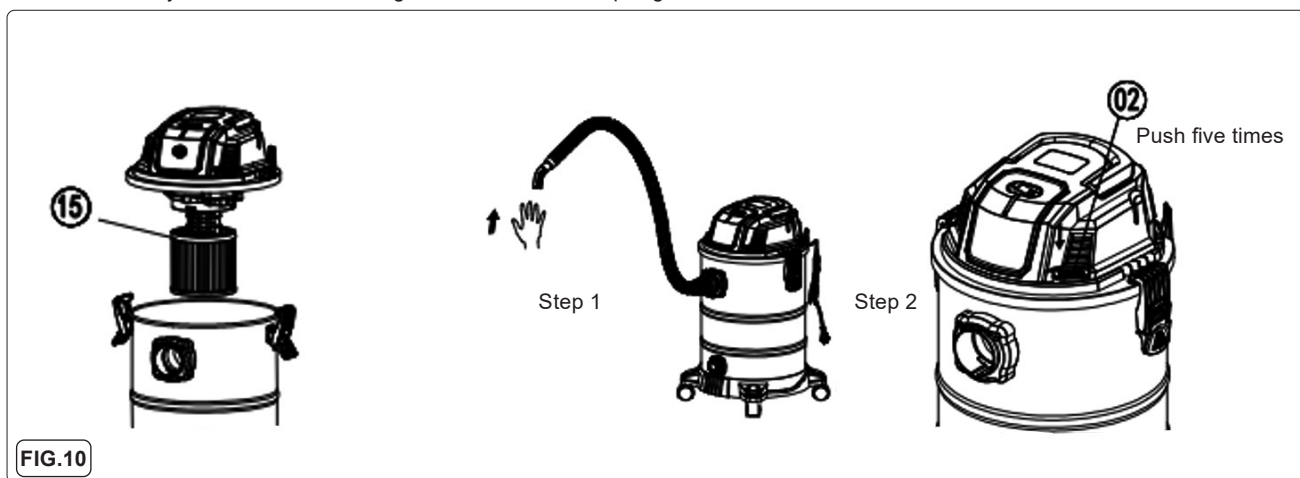


FIG.10

6.5. PROTECTIVE DEVICE - WATER VALVE (FIG.10.15)

The protective valve begins to work when the tank is full of dirty water. The appliance will make a noise that indicates the motor is running at a higher speed. When this occurs, turn off the appliance and empty the water.

7. MAINTENANCE

☐ **WARNING!** disconnect from mains before cleaning or maintaining the appliance.

7.1. BLOCKAGES

7.1.1. Ensure that the machine is switched to the on position.

7.1.2. Disconnect the hose handle from the plastic tube, assemble the HEPA filter as in Fig.3.

7.1.3. Block the hose or the inlet port.

7.1.4. Press the cleaning button for five times with an operation interval of one second, to complete a filter cleaning operation.

☐ **WARNING!** Avoid waiting until the vacuum cleaner's suction loss becomes too severe before using the filter cleaning function, as this could significantly reduce the effectiveness of the filter cleaning device.

7.2. CLEANING

After heavy use, or when the barrel is full of dust and dirty water, please follow the procedure below:

7.2.1. Unfasten the clips and remove the head unit.

7.2.2. Take off the filter bag, pour out and clean up the dust and dirty water in tank, and wipe the tank dry.

7.2.3. Wash and clean the filters, including HEPA filter and sponge filters. Filters should be dried before the next use.

NOTE: Filters should be changed regularly to ensure optimal performance.

7.2.4. Reinstall all the accessories and units as per the assembly Fig.3

7.3. LUBRICATION OF LOCKS

Moderate lubricating oil should be added to the sealing locks and pipe jacks for smooth operation.

7.4. END OF LIFE AND DISPOSAL

Dispose of unit and accessories in accordance with Local and National regulations, WEEE Regulations and Environment Protection footers.

8. TROUBLESHOOTING

SYMPTOM	POSSIBLE CAUSE	SOLUTION
Dust/ liquid / detergent leaks from the hose / tubes / pipes	1. Accessories are not installed correctly. 2. The rubber seal ring of detergent pipe has broken or fallen off.	1. Follow the assembly instructions and check the tightness of accessory joints. 2. Contact your stockist for repair/ replacement, or re-tighten the seal ring.
Weak suction	1. The filters, tubes, hose or suction port is blocked. 2. The head unit is not connected correctly.	1. Clean up the filters and the accessories, or make use of the filter-cleaning function. 2. Reset the head unit and buckle it on the tank as per the assembly instructions.
Abnormal noise when operating	1. Dirty water tank is full. 2. The vacuum has been turned over.	1. Empty the dirty water from the tank. 2. Ensure the vacuum is upright when operating.
Unit begins to smoke	Overheated, overloaded or damaged motor.	Switch off and unplug from power supply. DO NOT continue to use. Contact your stockist for repair/replacement.
Dirty water or foam is blowing out from the blower or the head.	1. Filters are not installed correctly. 2. Filters should be replaced. 3. Too much foam in the tank.	1. Check the installation of filters. 2. Replace the filters with new ones. 3. Use low-foaming detergent. Clean up the dirty water and foam in the tank.



ENVIRONMENT PROTECTION

Recycle unwanted materials instead of disposing of them as waste. All tools, accessories and packaging should be sorted, taken to a recycling centre and disposed of in a manner which is compatible with the environment. When the product becomes completely unserviceable and requires disposal, drain any fluids (if applicable) into approved containers and dispose of the product and fluids according to local regulations.



REGISTER YOUR PURCHASE HERE



WEEE REGULATIONS

Dispose of this product at the end of its working life in compliance with the EU Directive on Waste Electrical and Electronic Equipment (WEEE). When the product is no longer required, it must be disposed of in an environmentally protective way. Contact your local solid waste authority for recycling information.

Note: It is our policy to continually improve products and as such we reserve the right to alter data, specifications and component parts without prior notice. Please note that other versions of this product are available. If you require documentation for alternative versions, please email or call our technical team on technical@sealey.co.uk or 01284 757505.

Important: No Liability is accepted for incorrect use of this product.

Warranty: Guarantee is 12 months from purchase date, proof of which is required for any claim.

Sealey Group, Kempson Way, Suffolk Business Park, Bury St Edmunds, Suffolk. IP32 7AR



01284 757500



sales@sealey.co.uk



www.sealey.co.uk