



# 30L INDUSTRIAL VACUUM CLEANER WET & DRY WITH STAINLESS STEEL DRUM & AUTO START 1400W/230V

MODEL NO: **PC300SDAUTO.V4**

Thank you for purchasing a Sealey product. Manufactured to a high standard, this product will, if used according to these instructions, and properly maintained, give you years of trouble free performance.

**IMPORTANT:** PLEASE READ THESE INSTRUCTIONS CAREFULLY. NOTE THE SAFE OPERATIONAL REQUIREMENTS, WARNINGS & CAUTIONS. USE THE PRODUCT CORRECTLY AND WITH CARE FOR THE PURPOSE FOR WHICH IT IS INTENDED. FAILURE TO DO SO MAY CAUSE DAMAGE AND/OR PERSONAL INJURY AND WILL INVALIDATE THE WARRANTY. KEEP THESE INSTRUCTIONS SAFE FOR FUTURE USE.



Refer to  
instructions



Wear eye  
protection



Wear protective  
gloves



Wear protective  
clothing

## 1. SAFETY

### 1.1. ELECTRICAL SAFETY

- ☐ **WARNING!** It is the user's responsibility to check the following:
- ✓ Check all electrical equipment and appliances to ensure that they are safe before using.
- ✓ Inspect power supply leads, plugs and all electrical connections for wear and damage.
- ✓ Ensure that the insulation on all cables and on the appliance is safe before connecting it to the power supply.
- ✗ **DO NOT** use worn or damaged cables, plugs or connectors.
- ✓ Ensure that any faulty item is repaired or replaced immediately by a Sealey qualified technician.
- ✓ If the cable or plug is damaged during use, switch off the electricity supply and remove from use.
- ✓ Sealey recommend that an RCD (Residual Current Device) is used with all electrical products.  
**Important:** Ensure that the voltage rating on the appliance suits the power supply to be used and that the plug is fitted with the correct fuse.
- ✗ **DO NOT** pull or carry the appliance by the power cable.
- ✗ **DO NOT** pull the plug from the socket by the cable.

### 1.2. GENERAL SAFETY

- ✓ Wear protective clothing and gloves.
- ✓ Children from age 8 years and above, persons with reduced physical, sensory, or mental capabilities those with lack of experience and knowledge can use the appliance, if they have been given supervision or instruction concerning use of the appliance in a safe way to understand the hazards involved.
- ✓ Children shall **NOT** play with the appliance.
- ✓ Cleaning and user maintenance on the appliance shall not be made by children without supervision.
- ✓ Disconnect the cleaner from the power supply before servicing, changing accessories, or performing any maintenance.
- ✓ The plug must be removed from the socket-outlet before cleaning or maintaining the appliance. If the supply cord is damaged, it must be replaced by the manufacturer, its service agent or similarly qualified persons in order to avoid a hazard.
- ✓ Use only genuine parts and accessories. Unauthorised parts and accessories may be dangerous and will invalidate your warranty.
- ✓ Maintain the cleaner in good condition. Use an authorised agent for servicing. Keep machine clean, but **DO NOT** use solvents.
- ✗ **DO NOT** operate the unit without the locking cartridge filter in place (except when wet vacuuming when the sponge filter is used).  
**Using the cleaner without a locking cartridge filter will cause machine faults and will invalidate your warranty.**
- ✗ **DO NOT** allow children or untrained persons to operate the cleaner.
- ✗ **DO NOT** place attachments close to your face (especially eyes, ears, etc). Do not point the hose end at other persons or animals.
- ▲ **DANGER! DO NOT** vacuum hot or glowing ash, cigarette ends, inflammable, explosive, corrosive or other dangerous substances.
- ✗ **DO NOT** leave machine running unattended. Turn power supply OFF and **DO NOT** leave the vicinity until motor has come to a complete stop.
- ✗ **DO NOT** operate the cleaner while under the influence of drugs, alcohol or impairing medication, or if you are tired.
- ✗ **DO NOT** use the cleaner in the rain or in very damp conditions.
- ✗ **DO NOT** use the cleaner for a task it is not designed to perform.

## 2. INTRODUCTION

Dual-purpose design handles both wet and dry debris with ease. Built-in blower port allows for quick clearing of dust and debris. Integrated 230V socket with auto-start function enables activation via connected power tools. Fitted with a high-performance 1400W motor delivering up to 20kPa suction power. Supplied with an add-on attachment to help reduce motor noise during operation. Constructed with a rust-resistant stainless steel drum featuring tool and cable storage. Easy to manoeuvre with two fixed wheels and two swivel castors. Ideal for vehicle valeting, workshop cleaning, and DIY use. Supplied with a full accessory kit including crevice tool, floor brush, foam filter, extension tubes, 4m cable and 3-pin plug.

### 3. SPECIFICATION

Model No	PC300SDAUTO.V4
Airflow	2m3/min
Drum Size	30L
Electrical Class	Class I
Filter Type	Cartridge
Fuse Rating	13A
Maximum Vacuum Pressure	20KpA
Motor Power / Socket	1400W / 1400W
Nett Weight	6.2kg
Power Supply Cable Length	4m
Supply	230V~50Hz

### 4. CONTENTS

PC300SDAUTO.V4 ref fig.1	
1	Switch
2	Handle
3	Top cover
4	Barrel clip
5	Metal telescopic tube
6	Hose </td
7	Noise reducer
8	Sponge filter
9	Hepa filter
10	Big floor nozzle
11	Cable
12	Rear wheel
13	Rear wheel base
14	Front wheel base
15	Wheel
16	Drainage outlet
17	Stainless steel tank
18	Air inlet part
19	Power tool socket
20	Crevice nozzle
21	Adaptor
22	Air controller

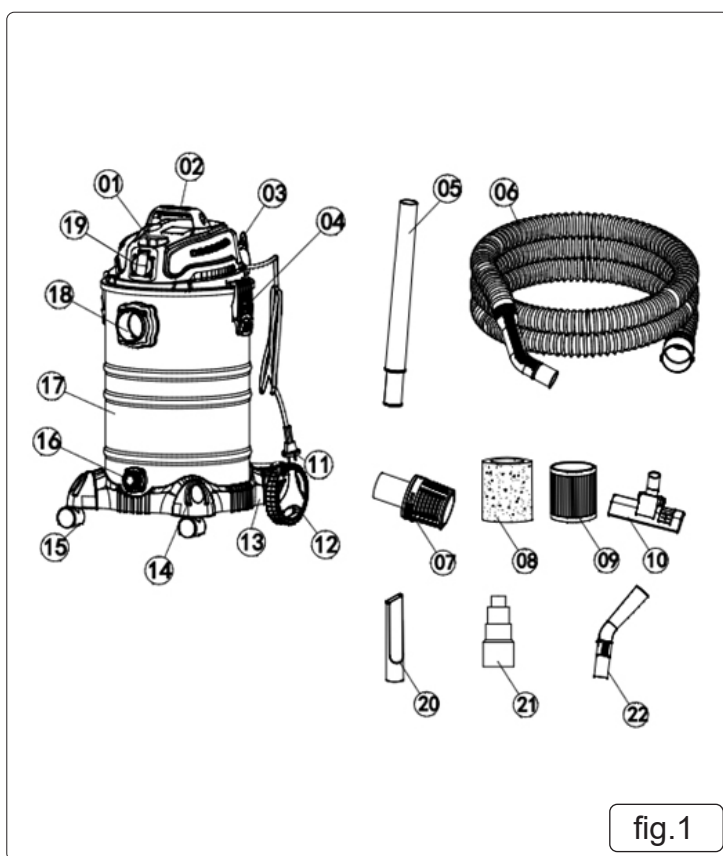


fig.1

### 5. ASSEMBLY

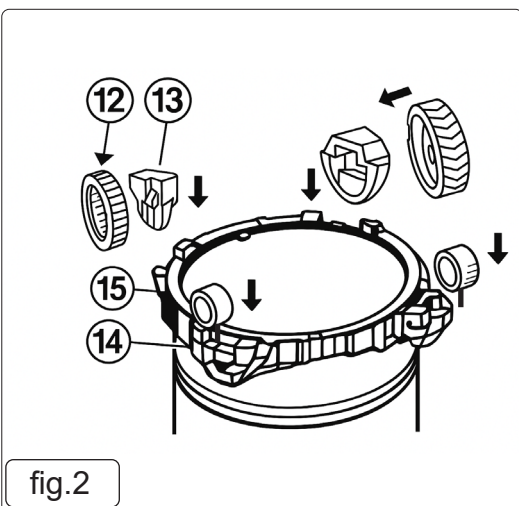


fig.2

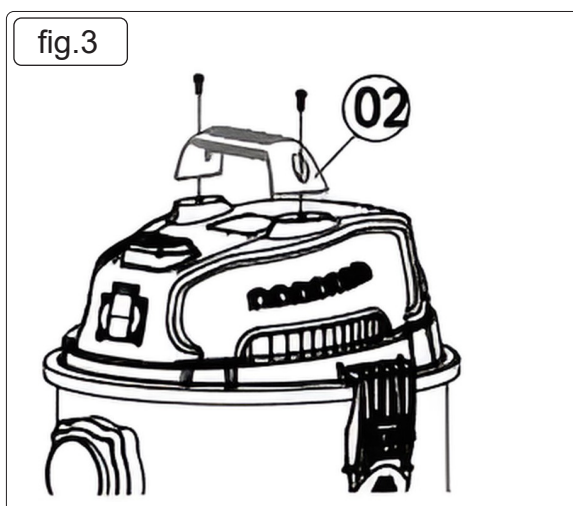
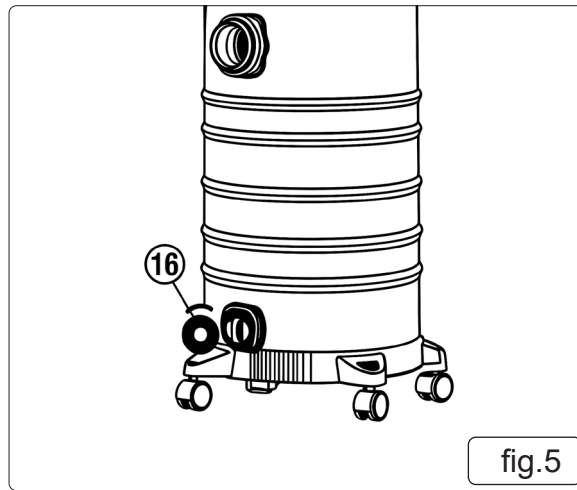
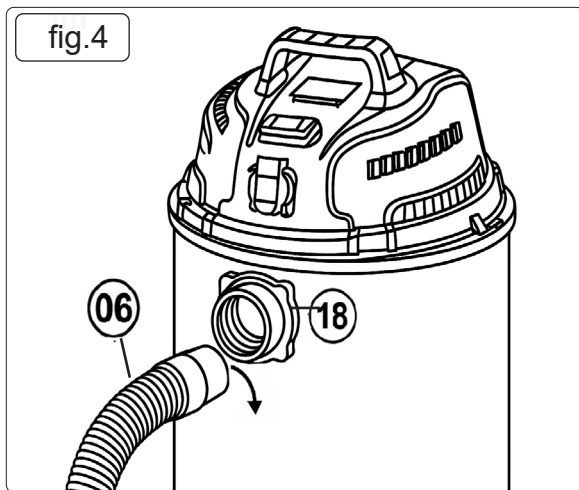
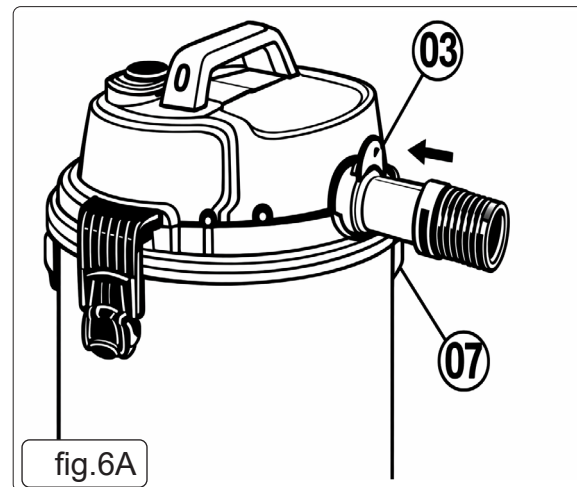
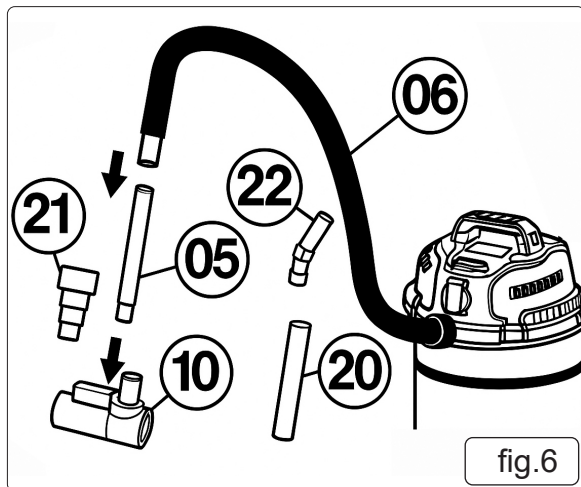


fig.3

- 5.1. Assemble the wheel as shown in fig.2. Refer to the parts information for additional guidance.
- 5.2. Position the handle assembly according to fig.3, ensuring it is correctly aligned with the designated orientation and fastening points before securing it.

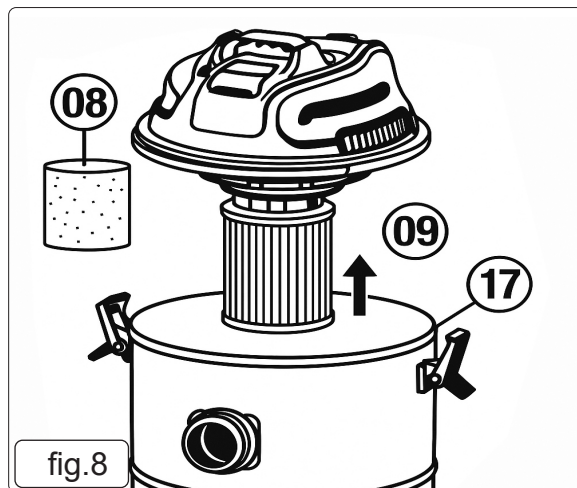
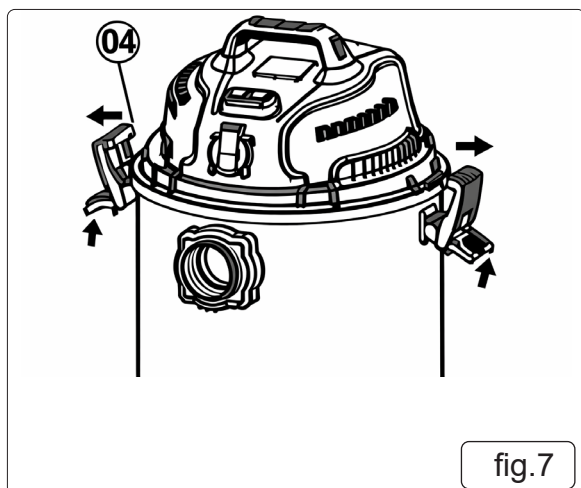


- 5.3. Install the hose assembly as shown in fig.4, ensuring all fittings are correctly aligned and securely connected.
- 5.4. Position the drainage outlet as illustrated in fig.5 to allow proper discharge of liquid collected from the vacuumed material.

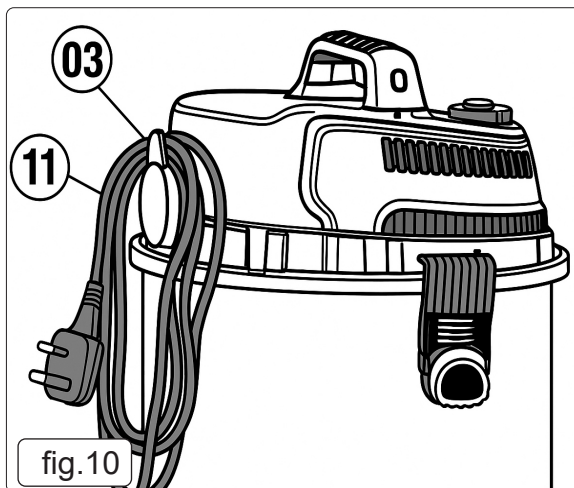
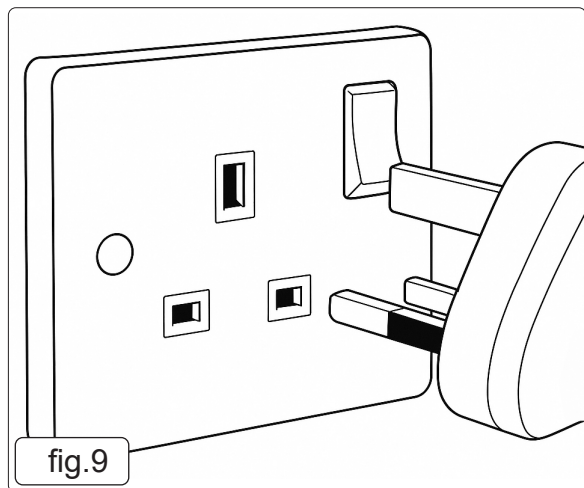


- 5.5. Fig.6, connect the extension tube to the main suction inlet, then attach the floor nozzle to the distal end of the tube. For confined spaces, remove the floor nozzle and fit the crevice nozzle onto the tube. Attach silencer as in fig.6A

## 6. OPERATION

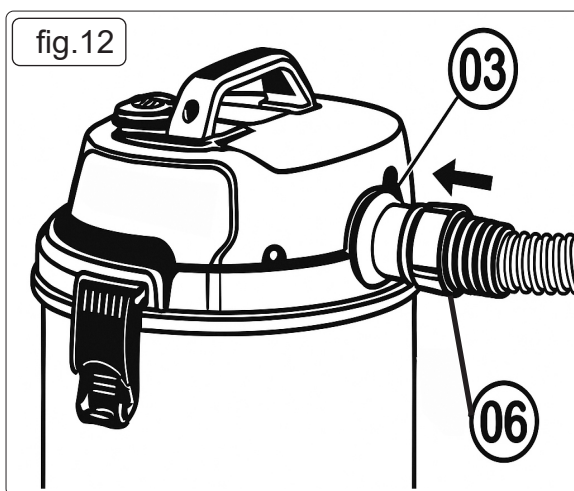
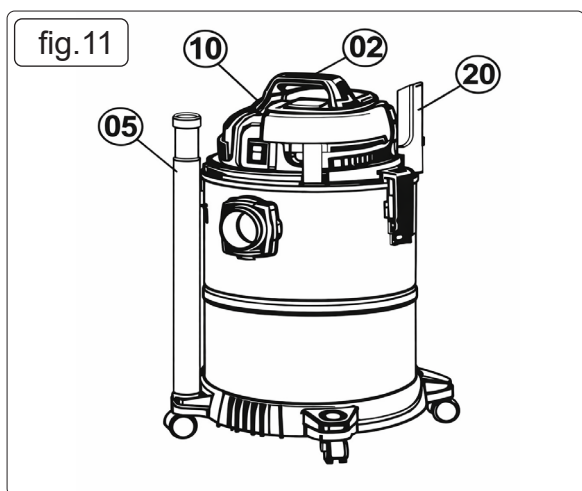


- 6.1. To remove or install the top cover, disengage the securing clamps as shown in fig.7. This procedure is required to ensure the correct filter is fitted for the intended application.
- 6.2. Fig.8 is to determine the correct filter specification that meets the operational requirements of the task.



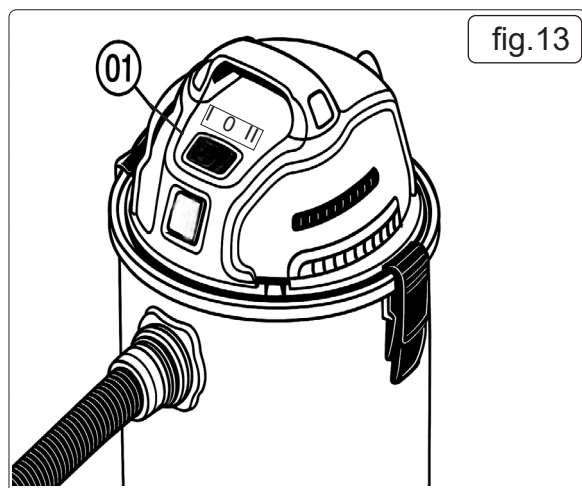
6.3. Connect the mains power cord to the unit as shown in fig.9.

6.4. Fig. 10 shows the built-in cord-hook system, which allows the power cord to be neatly stored when the unit is not in use.



6.5. Use the accessory retention bracket(s) to store accessories, as shown in fig.11.

6.6. Attach the hose to the rear outlet for blowing operation (see fig.12).



## 7. SWITCH OPERATION (FIG.13)

7.1. **Position 0:** The unit is de-energized; however, the connected power outlet maintains live voltage.

7.2. **Position I:** Automatic Mode, the dust vacuum is electronically synchronised with the connected power tool. When the power tool is switched on, the vacuum activates automatically. After the power tool is switched off, the vacuum continues to run for approximately 14 seconds to clear residual debris from the hose and inlet before shutting down. Check specification for load details.

7.3. **Position II:** If required, the unit can be operated in manual suction mode, allowing the operator to perform all suction tasks.



## 8. DRY VACUUM CLEANING

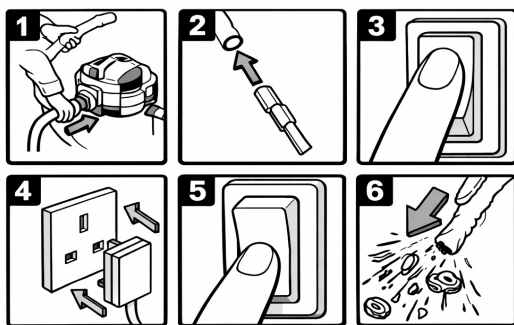
- ❑ **WARNING! Ensure you read, understand and apply Section 1 'Safety Instructions'. Reminder: DO NOT vacuum hazardous substances. Use of an incorrect cartridge filter will invalidate your warranty.**
- 8.1. **WARNING! Ensure the machine is unplugged from the power supply.**
- 8.2. Remove the top section and with the raised rim uppermost fit the cartridge filter tube down over the filter basket and push fully home fig.8.
- 8.3. Reposition the head onto the drum body and clip in place.
- 8.4. Insert the larger end of the flexible hose into the front inlet on the container and lock in place. Push the required attachment onto the free end of the hose.
- 8.5. Plug in the power supply.
- 8.6. Switch to the 'On' (position 'II').
- 8.7. When you have completed vacuuming, press the switch to 'Off' (position 'O') and unplug from power supply.
- 8.8. Regularly check the container and dispose of dust and debris when it is 1/2 full.

## 9. WET VACUUM CLEANING

- ❑ **WARNING! Ensure you read, understand and apply Section 1.'Safety Instructions.**
  - ❑ **WARNING! Remove plug from power supply before opening unit. DO NOT vacuum solvents, explosives, inflammable and/or hazardous liquids such as petrol, oil, spirits, paint, thinners, acids etc.**
  - ❑ **WARNING! Not designed for liquid storage. Always empty liquids after use and before storing.**
- 9.1. Ensure the machine is unplugged from the power supply. Make sure the tank is clean and free from dust and dirt.
  - 9.2. Remove the cartridge filter and fit a foam filter over the filter basket. Replace the top section onto the container (fig.8).
  - 9.3. To the same flexible hose as used in dry cleaning fit the desired nozzle.
  - 9.4. Ensure the switch is 'Off' (position 'O') before plugging into the power supply.
  - 9.5. Press the switch to 'On' (position 'II').
- NOTE:** To vacuum large quantities of liquid, from a sink or tank etc, do not immerse the nozzle completely in the liquid, leave a gap at the top of the nozzle opening to allow an air inflow. The machine is fitted with a float valve which stops the suction action when the tank has reached its maximum capacity. The user will notice an increase in motor speed. When this happens, turn off the machine, disconnect from power supply and empty the container either by removing the power head and pouring the liquid out or by removing the drain cap at the base of the container. After wet vacuuming, turn the machine off and unplug from power supply. Empty the container and clean and dry the inside and outside before storage. Remember! After wet vacuuming the foam filter must be removed and a cartridge filter must be fitted before dry vacuuming again.

## 10. BLOWING

- ❑ **WARNING! Wear a dust mask.**
  - ❑ **WARNING! Always wear safety goggles when using the unit for blowing.**
  - ❑ **WARNING! Keep bystanders clear from blowing debris.**
  - ❑ **Make sure the container is empty before using the unit as a blower.**
- 10.5.1. Remove the hose from the vacuum port and insert the large end of the hose into the blowing port on the other side of the power head and twist to the right to lock it in place.
  - 10.5.2. Fit the desired extension tube/nozzle to the free end of the vacuum hose.
  - 10.5.3. Ensure the ON/OFF switch is in the **OFF** position.
  - 10.5.4. Plug the unit into the mains power supply.
  - 10.5.5. Take firm hold of the loose end of the hose and move the ON/OFF switch to the ON 'II' to start the motor.
  - 10.5.6. If the unit does not appear to be blowing, switch **OFF** and check for blockages in the hosepipe.



## 11. MAINTENANCE



### 11.1. GENERAL MAINTENANCE.

- 11.1.1. Ensure the machine is unplugged from the power supply. (1)
- 11.1.2. Disconnect the hose from the container. (2)
- 11.1.3. Undo the clasps and remove motor head from the container. (3)
- 11.1.4. Clear out any dirt or debris from the container and hose. (4)
- 11.1.5. Check that the telescopic suction tube operates smoothly, and check the power cable to make sure it has not been damaged.

## 11.2. CARE OF CARTRIDGE FILTER

**IMPORTANT!** Clean or change the cartridge filter regularly for best performance and long product life. The cartridge filter is essential for the proper functioning of the cleaner. **If the machine is used without a cartridge filter the motor will burn out and the warranty will be voided.** Always keep a new, spare filter on hand.

11.2.1. The cartridge filters supplied are made of a high quality material designed to trap small dust particles and should only be used for dry vacuum cleaning. **If the cartridge filter becomes wet it will clog very quickly and be very difficult to clean.** Always handle filters very carefully when removing and cleaning them. Check the filter for tears or small holes. Replace the filter if it is found to be damaged.

11.2.2. To clean the dry vacuum filter, remove it from the unit and gently tap it against a solid surface to dislodge loose dust and debris. Use a soft brush to remove any remaining particles from between the pleats. Ensure the filter is completely free of dust before reinstalling.

11.2.3. **DO NOT** wash a dry-use filter.

11.2.4. To clean the wet vacuum sponge filter, remove the filter and rinse it thoroughly under clean, lukewarm running water to wash out collected liquids and residue. Gently squeeze—do not wring—the sponge to avoid tearing. Allow the filter to fully air-dry before storage or reinstalling, unless the unit is designed for use with a damp sponge filter.

## 11.3. INSTALLING CARTRIDGE FILTER

11.3.1. When replacing the filters, refer to Section 8 for the procedures related to dry vacuum cleaning and to Section 9 for the procedures related to wet vacuum cleaning. Ensure the correct method is followed according to the operating mode of the unit.

## 12. TROUBLESHOOTING

SYMPTOM	POSSIBLE CAUSES	SOLUTIONS
Vacuum will not operate	No power supply	Check power supply - cable, breakers, fuses.
	Faulty power cable	Unplug and check the power cable. If damaged have it replaced by your local Sealey dealer.
	Container full	Empty container
Dust expelled from the motor cover	Cartridge filter missing or damaged	Fit cartridge filter or replace damaged filter
Reduced efficiency and increased motor/speed vibration	There is a blockage in the nozzle or hose or in the container inlet. Cartridge filter blocked by fine dust.	Check nozzle, hose and container inlets and clear any blockages found. Remove filter and clean it or install new filter.

**IMPORTANT! IF THE MACHINE IS USED WITHOUT A FILTER THIS MAY CAUSE DAMAGE TO THE MOTOR AND THE WARRANTY WILL BE INVALIDATED. ALWAYS KEEP A SPARE FILTER HANDY.**

## 13. END OF LIFE

- 13.1. Disconnect the vacuum cleaner from the power supply and remove any filters or disposable components.
- 13.2. Dispose of consumables according to local waste-management requirements.
- 13.3. Deliver the product to an authorised WEEE collection centre, recycling facility, or retailer offering take-back services.



### WEEE REGULATIONS

Dispose of this product at the end of its working life in compliance with the EU Directive on Waste Electrical and Electronic Equipment (WEEE). When the product is no longer required, it must be disposed of in an environmentally protective way. Contact your local solid waste authority for recycling information.



### ENVIRONMENT PROTECTION

Recycle unwanted materials instead of disposing of them as waste. All tools, accessories and packaging should be sorted, taken to a recycling centre and disposed of in a manner which is compatible with the environment. When the product becomes completely unserviceable and requires disposal, drain any fluids (if applicable) into approved containers and dispose of the product and fluids according to local regulations.



REGISTER YOUR PURCHASE HERE

**Note:** It is our policy to continually improve products and as such we reserve the right to alter data, specifications and component parts without prior notice. Please note that other versions of this product are available. If you require documentation for alternative versions, please email or call our technical team on [technical@sealey.co.uk](mailto:technical@sealey.co.uk) or 01284 757505.

**Important:** No Liability is accepted for incorrect use of this product.

**Warranty:** Guarantee is 60 months from purchase date, proof of which is required for any claim.

**Jack Sealey Ltd t/a Sealey Group**, Kempson Way, Suffolk Business Park, Bury St Edmunds, Suffolk, IP32 7AR UK  
**Jack Sealey (EU) Ltd t/a Sealey Group**, Farney Street, Carrickmacross, Co. Monaghan, A81 PK68 Ireland  
**Tel:** 01284 757500 • **Email:** [sales@sealey.co.uk](mailto:sales@sealey.co.uk) • **Web:** [www.sealey.co.uk](http://www.sealey.co.uk)