

Thank you for purchasing a Sealey product. Manufactured to a high standard this product will, if used according to these instructions and properly maintained, give you years of trouble free performance.



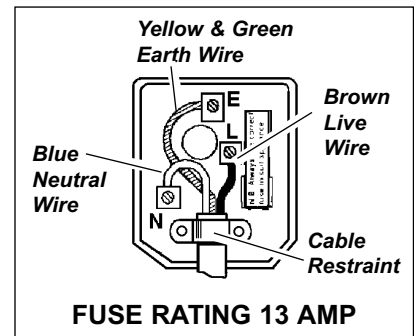
**IMPORTANT: PLEASE READ THESE INSTRUCTIONS CAREFULLY. NOTE THE SAFE OPERATIONAL REQUIREMENTS, WARNINGS & CAUTIONS. USE THE PRODUCT CORRECTLY AND WITH CARE FOR THE PURPOSE FOR WHICH IT IS INTENDED. FAILURE TO DO SO MAY CAUSE DAMAGE AND/OR PERSONAL INJURY AND WILL INVALIDATE THE WARRANTY. PLEASE KEEP INSTRUCTIONS SAFE FOR FUTURE USE.**

### 1. SAFETY INSTRUCTIONS

#### 1.1. ELECTRICAL SAFETY

**WARNING!** It is the responsibility of the owner and the operator to read, understand and comply with the following: You must check all electrical products, before use, to ensure that they are safe. You must inspect power cables, plugs, sockets and any other connectors for wear or damage. You must ensure that the risk of electric shock is minimised by the installation of appropriate safety devices. A Residual Current Circuit Breaker (RCCB) should be incorporated in the main distribution board. We also recommend that a Residual Current Device (RCD) is used. It is particularly important to use an RCD with portable products that are plugged into a supply which is not protected by an RCCB. If in any doubt consult a qualified electrician. You may obtain a Residual Current Device by contacting your Sealey dealer. **You must** also read and understand the following instructions concerning electrical safety.

- 1.1.1. The **Electricity at Work Act 1989** requires all portable electrical appliances, if used on business premises, to be tested by a qualified electrician, using a Portable Appliance Tester (PAT), at least once a year.
- 1.1.2. The **Health & Safety at Work Act 1974** makes owners of electrical appliances responsible for the safe condition of those appliances and the safety of the appliance operators. **If in any doubt about electrical safety, contact a qualified electrician.**
- 1.1.3. Ensure that the insulation on all cables and on the appliance is safe before connecting it to the power supply. See 1.1.1. and 1.1.2. and use a Portable Appliance Tester.
- 1.1.4. Ensure that cables are always protected against short circuit and overload.
- 1.1.5. Regularly inspect power supply cables and plugs for wear or damage and check all connections to ensure that none is loose.
- 1.1.6. **Important:** Ensure that the voltage marked on the appliance matches the power supply to be used and that the plug is fitted with the correct fuse - see fuse rating at right.
- 1.1.7. **DO NOT** pull or carry the appliance by the power cable.
- 1.1.8. **DO NOT** pull the plug from the socket by the cable.
- 1.1.9. **DO NOT** use worn or damaged cables, plugs or connectors. Immediately have any faulty item repaired or replaced by a qualified electrician. When an ASTA/BS approved UK 3 pin plug is damaged, cut the cable just above the plug and **dispose of the plug safely.** Fit a new plug according to the following instructions (UK only).



- a) Connect the **GREEN/YELLOW** earth wire to the earth terminal 'E'.
- b) Connect the **BROWN** live wire to the live terminal 'L'.
- c) Connect the **BLUE** neutral wire to the neutral terminal 'N'.
- d) **After wiring, check that there are no bare wires, that all wires have been correctly connected, that the cable outer insulation extends beyond the cable restraint and that the restraint is tight.**

Double insulated products, which are always marked with this symbol , are fitted with live (brown) and neutral (blue) wires only. To rewire, connect the wires as indicated above - **DO NOT** connect either wire to the earth terminal.

- 1.1.10. Products which require more than 13 amps are supplied without a plug. In this case you must contact a qualified electrician to ensure that a suitably rated supply is available. We recommend that you discuss the installation of an industrial round pin plug and socket with your electrician.
- 1.1.11. If an extension reel is used it should be fully unwound before connection. A reel with an RCD fitted is preferred since any appliance plugged into it will be protected. The cable core section is important and should be at least 1.5mm<sup>2</sup>, but to be absolutely sure that the capacity of the reel is suitable for this product and for others which may be used in the other output sockets, we recommend the use of 2.5mm<sup>2</sup> section cable. If extension reel is to be used outdoors, ensure it is marked for outdoor use.

#### 1.2 GENERAL SAFETY

- WARNING!** *Water and Electricity are dangerous partners. Be extremely cautious and always be aware that this device uses an electric motor. Always plug into a RCD (See electrical safety above). Unplug from mains before changing accessories or servicing.*
- WARNING!** *DO NOT USE the washer if any part of the unit, gun, nozzle, detergent bottle, hose or cables is damaged. Replace or repair using genuine parts only. Non-authorized parts may be dangerous and will invalidate your warranty. Always check connections are correctly secured and not cracked or damaged in any way before using the machine.*
- WARNING!** *Use washer on a flat, levelled surface, in a vertical position. Failure to do so will invalidate your warranty. NEVER lay the washer down during use.*
- ✓ Always be aware of the potential hazards that may occur during use. Study the applications and limitations of the washer before use.
- ✓ Keep the washer in good condition. Use an authorised agent to service the unit.
- ✓ Wear adequate protective clothing, goggles and anti-slip rubber soled footwear.
- ✓ Use where air can freely circulate around the washer to avoid the machine over-heating.
- WARNING!** *Ensure all persons and animals keep at a minimum distance of 16yards (15m) from the washer when in use.*
- WARNING!** *The pressure washer must only be used with clean water. Non-filtered water or corrosive chemicals must not be used as they will damage the cleaner.*
- ✓ Ensure you comply with all local water supply regulations. Power washers may only be connected to mains drinking water supply if a valve to prevent back flow is installed in the supply hose, or at the tap outlet.
- ✓ Position the washer as near to the water supply as possible.
- ✓ The supply hose must be reinforced, and have an internal diameter of 1/2". The water supply must be at least equal to the cleaner capacity. The water temperature must NOT exceed 140°F (60°C). The water supply pressure must NOT exceed 145psi (10 bar).
- ✓ Ensure the nozzle is aimed correctly at the working surface before activating the jet.
- ✓ Before operating the trigger, GRIP the gun firmly to counteract the recoil from the high pressure water jet.
- WARNING!** *Avoid sudden bursts of water as such will cause water pressure to drop and put extreme pressure on hoses and connectors.*
- ✓ If, during operation, power failure occurs turn the electricity and water off for safety reasons (but see para. 5.4. Note b).
- WARNING!** *The high pressure jet will cause loose particles to be propelled at high speed, which may cause serious injury.*

- ❑ **WARNING! DO NOT use the washer on any material containing asbestos as this may release hazardous asbestos particles into the atmosphere.**
- ❑ **WARNING! DO NOT use the washer without a water supply. Dry running can seriously damage the unit.**
- ✗ **DO NOT** obstruct ventilation grills during operation.
- ✗ **DO NOT** use the washer with flammable or toxic liquids or any other product. Only use recommended detergent. Non-recommended detergents may corrode the machine cover and accessories.
- ✗ **DO NOT** jam the trigger in the operating position.
- ✗ **DO NOT** adjust any internal control valves, as they have been set at the factory.
- ✗ **DO NOT** leave the washer running unattended.
- ✗ **DO NOT** connect other appliances to the machine inlet or outlet.
- ✗ **DO NOT** use in damp or wet weather conditions.
- ✗ **DO NOT** move the unit by pulling the hoses or electrical cables. Use handle.
- ✗ **DO NOT** touch plug with wet hands, to avoid the risk of electrocution. Keep all connections dry and off the ground.
- ✗ **DO NOT** direct jet against yourself, other persons or animals, electrical equipment or the machine itself.
- ✗ **DO NOT** use washer if you are tired, under the influence of alcohol, drugs or intoxicating medication.
- ✗ **DO NOT** allow children or untrained persons to operate the washer.
- ❑ **WARNING!** Discharge residual pressure before disconnecting the washer hose. Pressure left in unit may cause injury.
- ✓ After use disconnect washer from electrical and water supplies and store in a safe, dry, childproof area.

## 2. SPECIFICATION & CONTENTS

### 2.1. SPECIFICATION

Lance .....Rotating Nozzle  
 Manifold Pressure .....1750psi  
 Effective Cleaning Pressure .....2950psi  
 Water Flow .....420ltr/h  
 Motor Power .....1800W

Input Voltage .....230V  
 Motor Speed .....2800rpm  
 Max. Inlet Temp .....60°C  
 Hose Length .....7.0m  
 Weight .....13kg

By rotating the stream of water at high speed, it is possible to increase the effective cleaning pressure of washer. We quote the pressure at which the water leaves the pump as 'Manifold Pressure' and express the cleaning power of the washer as the 'Effective Cleaning Pressure'.

### 2.2. CONTENTS

Unpack the product and check contents against the list below. Also check that the machine has an identification plate or label. If label or parts are damaged or missing contact your supplier immediately.

### DESCRIPTION OF ITEMS

Fig.1

- 1 Washer
- 2 Water Supply Fitting with Filter
- 3 Detergent Bottle
- 4 Rotary Lance
- 5 Gun with High Pressure Hose
- 6 Fan Nozzle
- 7 Rotary Nozzle

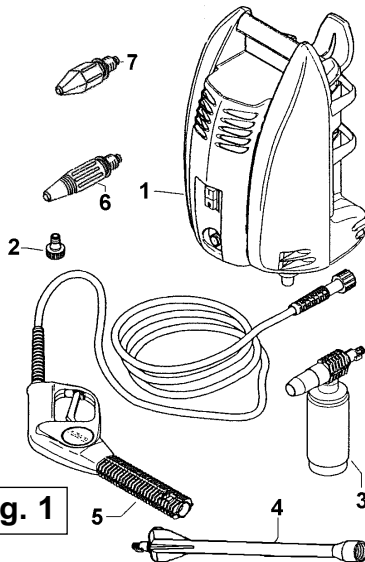
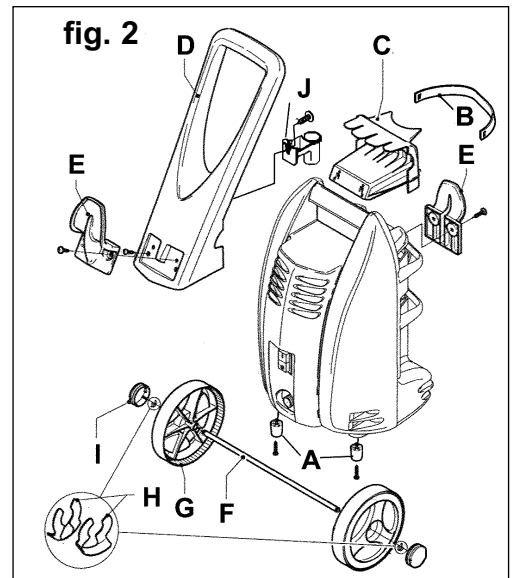


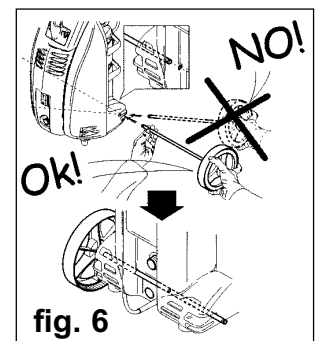
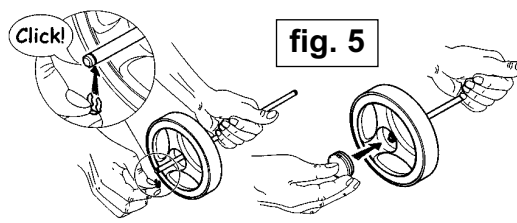
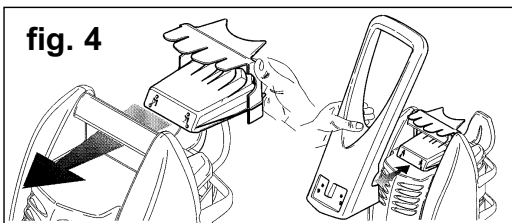
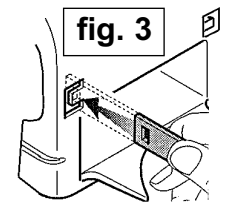
Fig.2

- A Feet
- B Elastic Strap
- C Support
- D Handle
- E Hose Reel Holder
- F Axle
- G Wheel x 2
- H C-clip x 2
- I Hub Cap x 2
- J Support



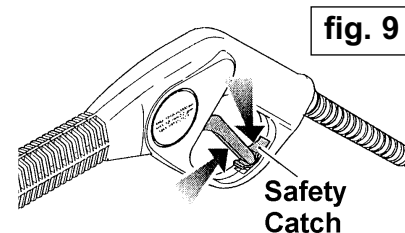
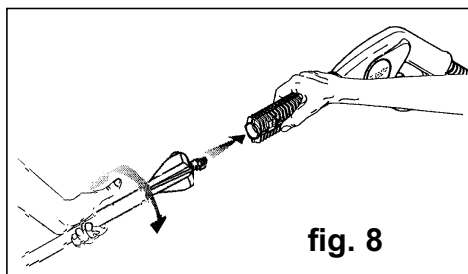
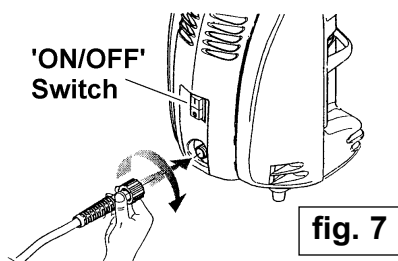
## 3. ASSEMBLY

- 3.1. Attach the two feet (fig.2.A) to the base of the washer using the screws provided.
- 3.2. Attach each end of strap (fig.2.B) to the lugs on the support (fig.2.C) as shown in fig.3.
- 3.3. Fit support (fig.2.C) and handle (fig.2.D) around top bar of washer, see fig.4. Secure with the two screws provided, through the lower pair of holes in handle.
- 3.4. Attach one half of the hose reel holder (fig.2.E) to the base of handle and the other half to the rear of the washer, using the screws provided.
- 3.5. Slide axle (fig.2.F) through hub of one wheel (fig.2.G), fit C-clip (fig.2.H) to groove in axle (flat face towards wheel) and then press hub cap (fig.2.I) into wheel centre. See fig.5.
- 3.6. Slide axle through mounting holes in rear base of washer, see fig.6, and then fit second wheel and hub cap as in 3.4.
- 3.7. Screw supply water fitting (fig.1.2) onto inlet port, on rear of washer just above axle. NOTE: This fitting contains a filter, if an alternative fitting is used a suitable filter MUST be used.
- 3.8. Attach the support (fig 2.J) to the handle using the screw provided.



## 4. PREPARATION

- ❑ **WARNING! Ensure pressure washer is switched off and unplugged from the electrical power supply before proceeding.**
- 4.1. Insert the high pressure hose (fig.1.5) into the outlet port of the washer and screw on the outer sleeve until hand tight. See fig.7.
- 4.2. To connect the lance (fig.1.4) to the gun (fig.1.5) insert the bayonet end of the lance into the gun and twist to lock as in fig.8.
- 4.3. Connect the mains water supply hose (not supplied) to the water inlet on the pressure washer. **DO NOT** turn the water on at this stage. The supply hose must be reinforced, and have an internal diameter of 1/2". The water supply must be at least equal to the washer capacity. The water temperature must **NOT** exceed 140°F (60°C). The water supply pressure must **NOT** exceed 145psi (10 bar).
- ❑ **WARNING! REMINDER:** The pressure washer must only be used with clean water. Non-filtered water or corrosive chemicals must not be used as these will damage the washer.
- 4.4. Ensure that the washer 'ON/OFF' switch, see fig.7, is in the 'OFF' position ('O' depressed).
- 4.5. Having carefully followed the safety instructions in Section 1, plug the washer into the mains power supply. The washer is now ready for use as described in Section 5.



## 5. OPERATING THE WASHER

- ❑ **WARNING! Ensure you read, understand and apply Section 1 safety instructions.**
- ❑ **WARNING! Dry running can seriously damage the unit.**

### 5.1 Using the lance

- 5.1.1. Ensure the water intake is correctly connected, air can freely circulate around the washer and washer is standing upright.
- 5.1.2. Turn the mains water supply fully on.
- 5.1.3. Switch on the power by pressing the 'ON/OFF' switch to 'ON' ('I' depressed).
- 5.1.4. **WARNING! Aim nozzle correctly at working surface.** Disengage the trigger safety catch (press down, see fig.9) and pull the trigger to start the washer. Note that releasing the trigger will stop the jet **and** turn off the motor.
- 5.1.5. Check the system to ensure there are no water leaks.
- 5.1.6. Keep the nozzle approximately 380mm (15") from the surface being cleaned.

### 5.2 Detergent

- 5.2.1. Fill the detergent bottle (fig.1.3) with the recommended Sealey pressure washer detergent.
- 5.2.2. Fit the detergent bottle to the gun in the same manner as for the lance, see 4.2.
- 5.2.3. Operate washer as for lance.

### 5.3 Using detergent

Dirt is dissolved by applying detergent to the dry surface. GRIP the gun firmly to counteract the recoil of the water jet and aim at the working surface.

- 5.3.1. On vertical surfaces, work from the bottom upwards.
- 5.3.2. Leave the detergent to act for 1 - 2 minutes, but **DO NOT** allow the surface to dry out.
- 5.3.3. To wash down, remove the detergent bottle from the gun and replace with the lance.

### 5.4 On completion

- 5.4.1. Turn off at washer 'ON/OFF' switch and disconnect from mains. Turn off the water supply.
- 5.4.2. Pull the gun trigger until no more water comes out of the nozzle. Washer is now depressurized.
- 5.4.3. Release trigger and engage the trigger safety catch (push up).
- 5.4.4. Remove lance from gun and store, **nozzle-up**, in one of the washer side compartments (fig.1.A). It is important that the nozzle is stored in this fashion. If stored flat or nozzle-down the moving components in the nozzle are likely to seize.
- 5.4.5. Store detergent bottle in the position provided behind the handle.
- 5.4.6. Wipe the machine clean and dry and store in a clean, safe, dry, childproof location.

- Notes:**
- a) If the water pressure drops (i.e. someone using same water supply), the washer will not operate correctly. Immediately switch off and wait until the pressure is restored.
  - b) Should the motor stop and fail to restart, the built in thermal cut-out may have tripped. Check to ensure the washer is connected correctly to electrical and water supplies (also see troubleshooting). Wait 3 minutes for the cut-out to reset and re-start the motor. If the motor continues to cut out contact your authorised service agent.
  - c) If storing the washer for a long period during winter, operate the washer with a non-corrosive, non-toxic anti-freeze before storage. Keep detergents according to instructions on the container label.

## 6. MAINTENANCE

- ❑ **WARNING! Ensure the pressure washer is switched off and unplugged from the electrical power supply and turned off at the water supply tap before proceeding.**
- 6.1. Keep the washer clean at all times.
- 6.2. Check and clean the supply water filter, part of fitting (fig.1.2), on a regular basis.
- 6.3. Take the nozzle cleaning tool (fig.1.8), detach the lance from the gun and remove any dirt from nozzle, then rinse.
- 6.4. Check washer, gun, lance, detergent bottle, hose, connections and cables for damage regularly. Repair or replace any damaged items before next use. **DO NOT open the casing, use authorised agent to service the washer.**

## 7. TROUBLESHOOTING GUIDE

SYMPTOM	REASON	REMEDY
Pump does not reach required pressure	Nozzle incorrect or worn Dirty filter Air being sucked into the system Water pressure low Worn or damaged pump components	Replace the nozzle Clean filter Check that hoses and fittings are air tight Check that hoses/fittings are water tight and tap is fully open Contact Authorised Service Agent
Pressure drops during use or noisy pump	Pump sucking air Pump defect Water too hot Dirty filter	Check that hoses and fittings are air tight Contact Authorised Service Agent Reduce temperature Clean or replace
Motor does not start when switched on	Plug is not connected No electrical power	Check plug connections and mains power supply is active
Motor hums but does not start when switched on	Unsuitable mains voltage Pump is frozen  Incorrect extension cable	Check for adequate power supply and cable condition Leave unit to thaw naturally. The pressure washer should be protected from the threat of freezing. Extensive pump damage could otherwise occur. (see Section 5 Note c). Use a suitable extension cable. <b>See Section 1 Elect.Safety.</b>
The motor stops	Tripped thermal overload due to overheating	Check that the mains voltage matches the specifications Switch off the motor and let machine cool for 3 minutes
Fluctuating pressure	Inadequate water supply Pump sucking air Dirty filter	Fully open supply tap Check that hoses and fittings are air tight Check and clean
Irregular jet	Dirt in high pressure nozzle of spray gun	Clean with probe provided

## 8. DECLARATION OF CONFORMITY

**Declaration of Conformity** We, the sole importer into the UK of Sealey Power Products, declare that the product listed below is in conformity with the following standards and directives.

**Pressure Washer Model PC2950**

73/23/EEC Low Voltage Directive  
89/336/EEC EMC Directive  
98/37/EC Machinery Directive



The construction file for this product is held by the Manufacturer and may be inspected, by a national authority, upon request to Jack Sealey Ltd.

Signed by Mark Sweetman

5th June 2000

*For Jack Sealey Ltd. Sole importer into the UK of Sealey Power Products.*

**NOTE:** It is our policy to continually improve products and as such we reserve the right to alter data, specifications and component parts without prior notice.

**IMPORTANT:** No responsibility is accepted for incorrect use of this equipment.

**WARRANTY:** Guarantee is 12 months from purchase, proof of which will be required for any claim.

**INFORMATION:** For a copy of our latest catalogue and promotions call us on 01284 757525 and leave your full name and address, including postcode.



**Sole U.K. Distributor, Sealey Group,**  
Bury St. Edmunds, Suffolk.

01284 757500

01284 703534

E-mail: [sales@sealey.co.uk](mailto:sales@sealey.co.uk)

Web: [www.sealey.co.uk](http://www.sealey.co.uk)