

Thank you for purchasing a Sealey product. Manufactured to a high standard this product will, if used according to these instructions and properly maintained, give you years of trouble free performance.



**IMPORTANT: PLEASE READ THESE INSTRUCTIONS CAREFULLY. NOTE THE SAFE OPERATIONAL REQUIREMENTS, WARNINGS & CAUTIONS. USE THE PRODUCT CORRECTLY AND WITH CARE FOR THE PURPOSE FOR WHICH IT IS INTENDED. FAILURE TO DO SO MAY CAUSE DAMAGE AND/OR PERSONAL INJURY AND WILL INVALIDATE THE WARRANTY. PLEASE KEEP INSTRUCTIONS SAFE FOR FUTURE USE.**

### 1. SAFETY INSTRUCTIONS

#### 1.1. ELECTRICAL SAFETY

**WARNING!** It is the responsibility of the owner and the operator to read, understand and comply with the following:

You must check all electrical products before use, to ensure that they are safe. You must inspect power cables, plugs, sockets and any other connectors for wear or damage. You must ensure that the risk of electric shock is minimised by the installation of appropriate safety devices. A Residual Current Circuit Breaker (RCCB) should be incorporated in the main distribution board. We also recommend that a Residual Current Device (RCD) is used. It is particularly important to use an RCD with portable products that are plugged into a supply which is not protected by an RCCB. If in any doubt consult a qualified electrician. You may obtain a Residual Current Device by contacting your Sealey dealer.

**You must** also read and understand the following instructions concerning electrical safety.

1.1.1. The **Electricity at Work Act 1989** requires all portable electrical appliances, if used on business premises, to be tested by a qualified electrician, using a Portable Appliance Tester (PAT), at least once a year.

1.1.2. The **Health & Safety at Work Act 1974** makes owners of electrical appliances responsible for the safe condition of those appliances and the safety of the appliance operators. **If in any doubt about electrical safety, contact a qualified electrician.**

1.1.3. Ensure that the insulation on all cables and on the appliance is safe before connecting it to the power supply. See 1.1.1. and 1.1.2. and use a Portable Appliance Tester.

1.1.4. Ensure that cables are always protected against short circuit and overload.

1.1.5. Regularly inspect power supply cables and plugs for wear or damage and check all connections to ensure that none are loose.

1.1.6. **Important:** Ensure that the voltage marked on the appliance matches the power supply to be used and that the plug is fitted with the correct fuse - see fuse rating at right.

1.1.7. **DO NOT** pull or carry the appliance by the power cable.

1.1.8. **DO NOT** pull the plug from the socket by the cable.

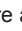
1.1.9. **DO NOT** use worn or damaged cables, plugs or connectors. Immediately have any faulty item repaired or replaced by a qualified electrician. When an ASTA/BS approved UK 3 pin plug is damaged, cut the cable just above the plug and **dispose of the plug safely.** Fit a new plug according to the following instructions (UK only).

a) Connect the **GREEN/YELLOW** earth wire to the earth terminal 'E'.

b) Connect the **BROWN** live wire to the live terminal 'L'.

c) Connect the **BLUE** neutral wire to the neutral terminal 'N'.

d) **After wiring, check that there are no bare wires, that all wires have been correctly connected, that the cable outer insulation extends beyond the cable restraint and that the restraint is tight.**

Double insulated products, which are always marked with this symbol , are fitted with live (brown) and neutral (blue) wires only.

To rewire, connect the wires as indicated above - **DO NOT** connect either wire to the earth terminal.

1.1.10. Products which require more than 13 amps are supplied without a plug. In this case you must contact a qualified electrician to ensure that a 30 amp supply is available. We recommend that you discuss the installation of an industrial round pin plug and socket with your electrician.

1.1.11. If an extension reel is used it should be fully unwound before connection. A reel with an RCD fitted is preferred since any appliance plugged into it will be protected. The cable core section is important and should be at least 1.5mm<sup>2</sup>, but to be absolutely sure that the capacity of the reel is suitable for this product and for others which may be used in the other output sockets, we recommend the use of 2.5mm<sup>2</sup> section cable.

#### 1.2. GENERAL SAFETY

**WARNING!** *Water and electricity are dangerous partners. Be extremely cautious and always be aware that this device uses an electric motor. Always plug into a RCD (See electrical safety above). Unplug from mains before changing accessories or servicing.*

**WARNING!** *DO NOT USE the washer if any part of the unit, gun, nozzle, detergent tank, hose or cables is damaged. Replace or repair using genuine parts only. Unauthorised parts may be dangerous and will invalidate your warranty. Always check connections are correctly secured and not cracked or damaged in any way before using the machine.*

**WARNING!** *Use washer on a flat, levelled surface, in an upright position. Failure to do so will invalidate your warranty. NEVER lay the washer down during use.*

✓ Ensure you comply with all local water supply regulations. Power washers may only be connected to mains drinking water supply if a back flow preventer valve is installed in the supply hose, or at the tap outlet.

✓ The supply hose must be reinforced, and have an internal diameter of 1/2". The water supply must be at least equal to the cleaner capacity. The water temperature must NOT exceed 122OF (50OC). The water supply pressure must NOT exceed 6 bar.

✓ Always be aware of the hazards that may occur during use. Study all applications and limitations of the washer before use.

✓ Use where air can freely circulate around the washer to avoid the machine overheating.

✓ Keep the washer in good condition. Use an authorised service agent to service the unit.

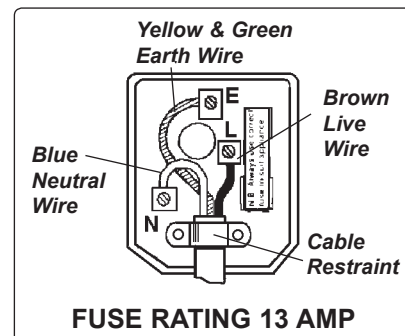
✓ Wear adequate protective clothing, goggles and anti-slip rubber soled footwear.

✓ Position the washer as near to the water supply as possible.

**WARNING!** *Ensure all persons and animals keep at a minimum distance of 16 yards (15mtr) from the washer when in use.*

**WARNING!** *The pressure washer must only be used with clean water. Unfiltered water or corrosive chemicals must not be used as these will damage the cleaner.*

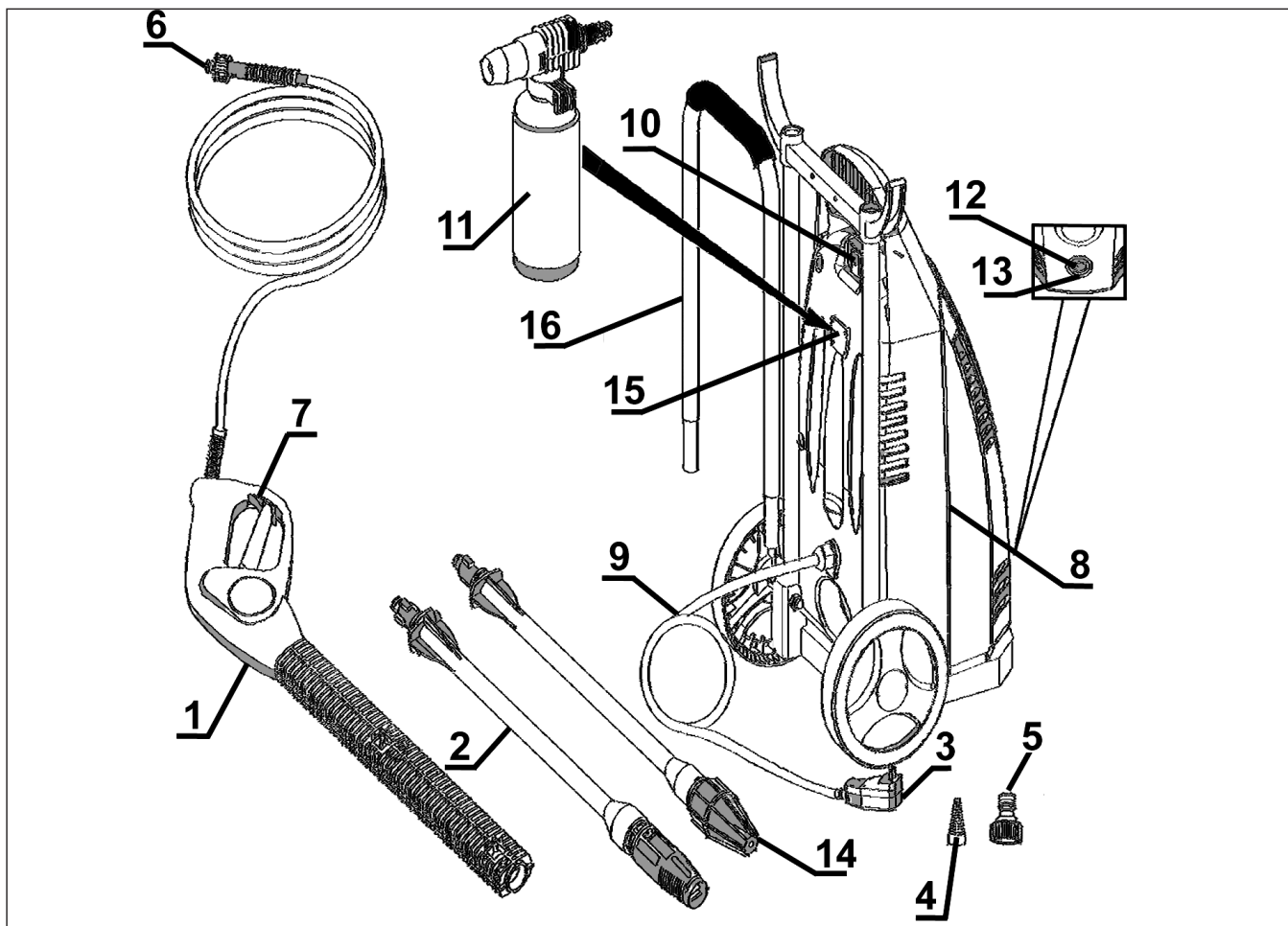
✓ Ensure the nozzle is aimed correctly at the work surface before switching on the machine.



- ✓ Before activating the trigger, GRIP the gun firmly to counteract the recoil from the high pressure water jet.
- ☐ **WARNING!** Avoid sudden bursts of water as these will cause water pressure to drop and put extreme pressure on hoses and connectors.
- ✓ If, during operation, power failure occurs turn the electricity and water off for safety reasons.
- ☐ **WARNING!** The high pressure jet will cause loose particles to be propelled at high speed, which may cause serious injury.
- ☐ **WARNING!** DO NOT operate the machine without a water supply. Dry running can seriously damage the unit.
- ☐ **WARNING!** DO NOT leave the washer switched on for more than 15 minutes without operating the trigger.
- x DO NOT obstruct ventilation grills during operation.
- x DO NOT use the washer with flammable or toxic liquids or any other product. Use only recommended detergent. Unapproved detergents may corrode the machine cover and accessories.
- x DO NOT jam the trigger in the operating position.
- x DO NOT adjust any internal control valves, as they have been factory set.
- x DO NOT connect other appliances to the machine inlet or outlet.
- x DO NOT move the unit by pulling the hoses or electrical cables. Use the handle.
- x DO NOT touch plug with wet hands. To avoid the risk of electrocution keep all connections dry and off the ground.
- x DO NOT direct jet against yourself, other persons, animals, electrical equipment or the machine itself.
- x DO NOT use washer if you are tired or under the influence of alcohol, drugs or intoxicating medication.
- x DO NOT allow children or untrained persons to operate the washer.
- ☐ **WARNING!** Discharge residual pressure before disconnecting the washer hose. Pressure left in unit may cause injury.
- ✓ After use, disconnect washer from electrical mains and water supply and store in a safe, dry, childproof area.

## 2. INTRODUCTION

Heavy-duty unit supplied with trolley to hold all hoses. Pump unit fitted with high pressure by-pass to preserve pump life. Features automatic Total Stop System which switches the motor on and off when the lance trigger is operated, prolonging the motor life. Supplied with hose, trigger, rotating brush, adjustable nozzle and Rotablast cleaning nozzle which helps develop the same Effective Cleaning Power (ECP) as a 2950psi washer. Includes foam applicator for pre-wash. Suitable for a wide range of applications.



## 3. CONTENTS & SPECIFICATION

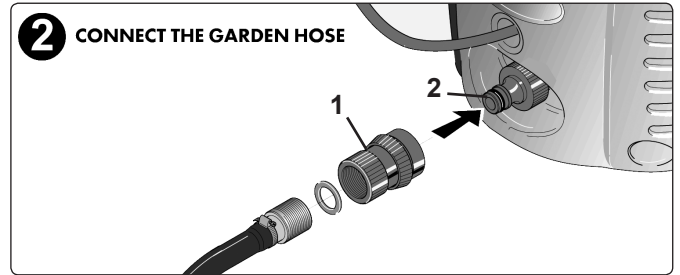
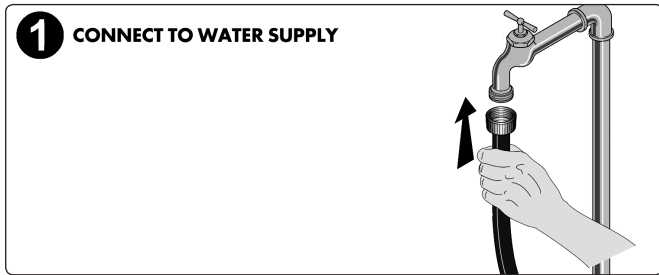
Unpack the product and check contents against the list below. Also check that the machine has an identification plate or label. If label or parts are damaged or missing contact your supplier immediately.

1	High Pressure Gun & Hose Assy	7	Safety Lock	13	Water Plug
2	Variable Nozzle with Lance	8	Motor & Pump in Case	14	Rotablast Nozzle with Lance
3	Plug	9	Power Supply Lead	15	Soap Dispenser Holder Bracket
4	Water Inlet Filter	10	ON/OFF Switch	16	Handle
5	Supply Hose Fittings	11	Soap Dispenser		
6	High Pressure Hose Connector	12	High Pressure Outlet		

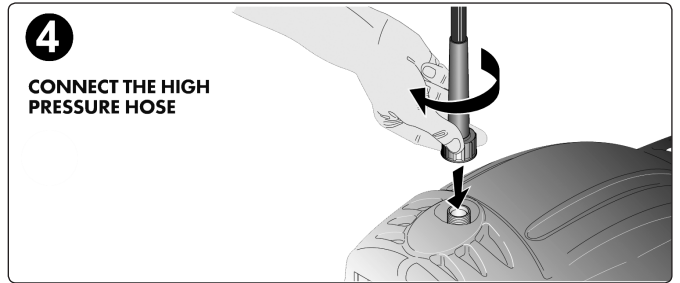
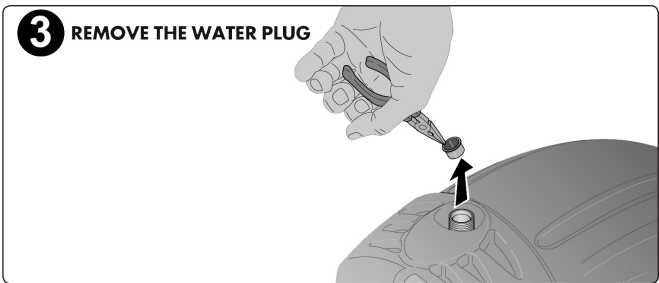
### 3.1. SPECIFICATION

Model No. ....	<b>PC2700</b>	Motor Power .....	1700W	Weight .....	9kg
Manifold Pressure .....	90bar	Input Voltage/Current .....	230V/7.4A	Rotablast Nozzle .....	Yes
Max Pressure .....	120bar	Rec. Power Supply .....	13A	Trolley Included .....	Yes
Effective Cleaning Power .....	2950psi	Max. Inlet Temp. ....	50°C	Total Stop .....	Yes
Water Flow .....	360ltr/hr	Hose Length .....	6mtr		

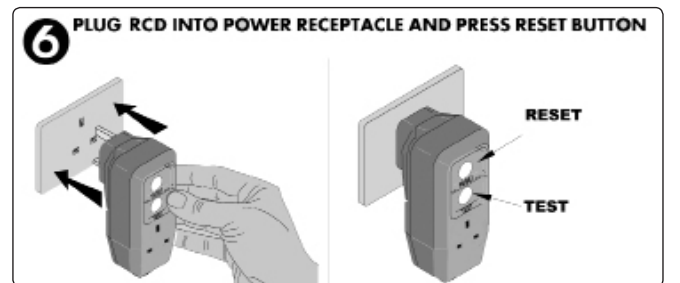
## 4. SET-UP



**4.1 Connecting the water supply.** Use a reinforced hose pipe with an internal diameter of 1/2" and connect to the mains water supply as indicated in fig.1. Before attaching the hose to the pressure washer flush the hose through with some clean water to remove any foreign matter from within the hose. Attach a push fit hose connector (fig.2-1) to the water inlet on the machine (see fig.2-2).



**4.2 Connecting the high pressure hose.** Remove and discard the transit plug from the water 'out' connector on the lower front of the machine (see fig.3). Attach the high pressure hose as indicated in fig.4, ensuring the connector is hand tight. Turn on the water supply.

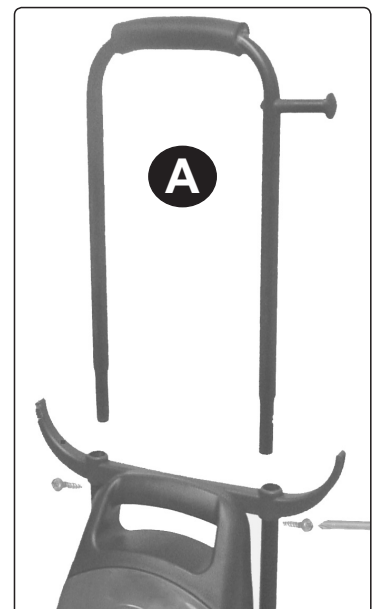


**4.3 Assembling the lance and nozzle.**  
 Push the lance into the gun as shown in fig.5 and turn through 90° until it locks into place.  
 **WARNING!** Ensure the nozzle is locked into position, failure to ensure this could result in the nozzle being ejected under high pressure when operating the gun.

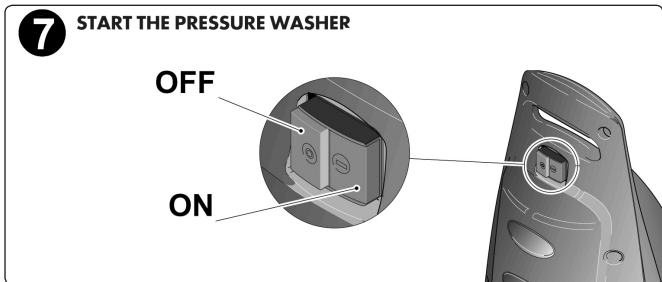
**4.4 Fitting the rotating brush.**  
 If you require the rotating brush, fit in the same manner as assembling the lance in fig.5 above.

**4.5 Assembling the trolley.**  
 Insert the handle into the trolley base and attach by installing the two screws provided as shown opposite in figure A.

**4.6 Connect to supply.**  
 Using an RCD plugged into a 13A mains socket, turn the power on (fig.6). DO NOT touch the plug with wet hands.



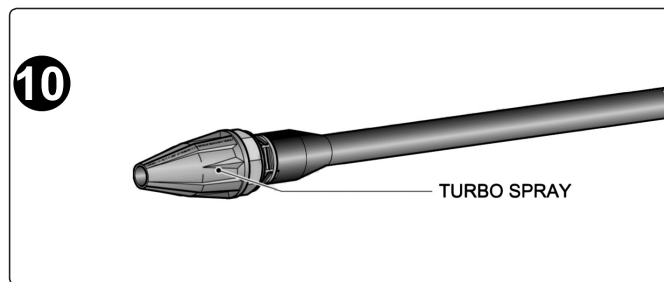
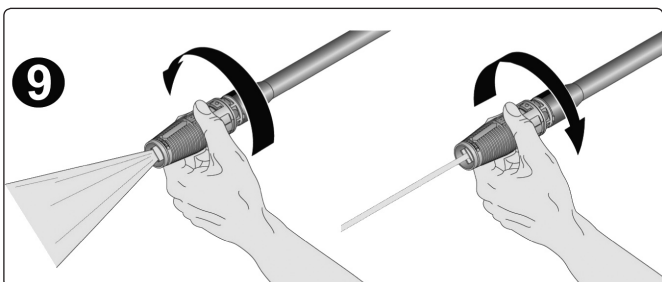
## 5. OPERATION



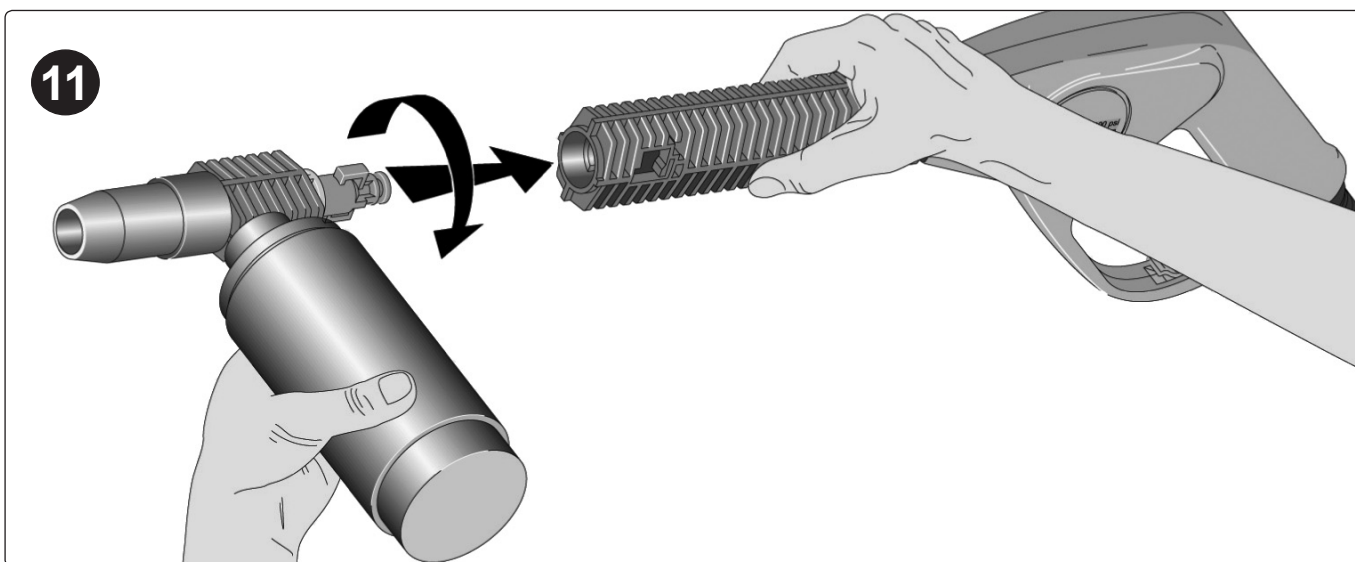
- WARNING!** Ensure you read, understand and apply Section 1 safety instructions.
- WARNING!** Dry running can seriously damage the unit.
- WARNING!** Use washer on a flat, levelled surface, in an upright position. Failure to do so will invalidate your warranty. Never lay the washer down during use.
- WARNING!** DO NOT leave washer switched on for more than 15 minutes without operating trigger.

**Important!** The washer motor will stop as soon as the gun trigger is released and will restart when the trigger is squeezed. Always allow at least 5 seconds between releasing the trigger and restarting.

- 5.1. **Primary checks.** Check that the inlet filter is clean; pump delivery and pressure will be reduced if blocked. Never use the machine without a filter (which is fitted inside the hose connector, see fig.2-2). Ensure that the water supply, high pressure hose and gun are correctly connected, and that air can freely circulate around the washer.
- 5.2. **Operation of safety catch.** To prevent inadvertent operation of the unit the safety catch should always be engaged when the gun is not in use. Push the catch to the left as you are holding the gun to lock it, to the right to unlock it (fig.8).



- 5.3. **Operating the machine.** Hold the spray gun firmly to counteract the recoil caused by the high pressure of the water. Before switching on ensure that the lance is not directed at people, objects or animals prior to being directed at the object to be cleaned. It is recommended that the trigger is depressed before switching on the unit before every use. This reduces the back pressure and amperage draw which prevents fuses blowing. Switch the machine on by pressing the button marked 'I' as shown in fig.7 above. Release the handle safety catch (fig.8). Point the lance at the object to be cleaned and fully depress the trigger. When the trigger is released the motor will automatically switch off.



**5.4 Adjusting spray pattern.** The variable nozzle can be continuously varied from a fine pencil jet to a fan pattern by rotating the body of the nozzle as indicated in fig.9.

**Caution!** The pencil point setting is very aggressive. It is recommended that for most cleaning applications, a twenty degree spray angle is used to avoid damage to the surface being sprayed.

**Note:** The pressure of the spray on the surface you are cleaning increases as you move the nozzle closer to the surface.

5.4.1 For the high pressure Rotablast spray fit the Rotablast Nozzle (fig.10). This nozzle is intended for maximum cleaning affect.

**Note:** *The Rotablast Nozzle is not adjustable in any way. DO NOT attempt to dismantle it. It may be unscrewed from the lance for cleaning purposes only.*

**5.5 Using detergent.** Use only detergents approved for use in pressure washers.

5.5.1 Remove the nozzle that is attached to the gun and attach the soap dispenser as fig.11.

5.5.2 Remove the bottle and check that the tube is not blocked.

5.5.3 Fill with detergent suitable for use with a pressure washer and screw on the bottle. The detergent will automatically be mixed with the water and discharged through the nozzle.

5.5.4 Dirt is dissolved by applying detergent to the dry surface. On vertical surfaces, work from the bottom upwards.

5.5.5 Leave the detergent to act for 1-2 minutes, but **DO NOT** allow the surface to dry out.

5.5.6 To wash down select the Variable Nozzle set on the wide fan setting.

5.5.7 When you have finished the soap application, remove the bottle and flush clean water through the tube until it is thoroughly cleaned.

**Note:** Failure to clean properly will cause the injection system to become clogged and inoperable.

**5.6. When washing is completed.**

5.6.1. Switch the power supply off by pressing the button marked 'O' as indicated in fig.7.

5.6.2 Turn off the water supply tap.

5.6.3 Discharge residual pressure by pressing the trigger until no more water comes out of the nozzle.

**WARNING!** Failure to discharge pressure could result in personal injury.

5.6.4 Disconnect the inlet and high pressure outlet hoses.

5.6.5 Wipe the machine clean and dry and store in a clean, safe, dry, childproof location.

**Note:** a) **DO NOT** leave motor switched on for more than 15 minutes without operating trigger.

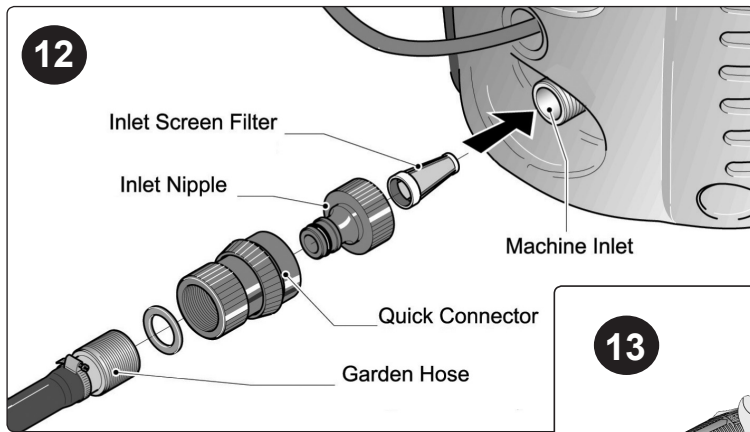
b) If the water pressure drops (i.e. someone else using the same water supply), the washer will not operate correctly. Immediately switch off the motor and wait until the pressure is restored.

c) Should the motor stop and fail to restart, the built in thermal cut-out may have tripped. Check to ensure that the washer is connected correctly to electrical and water supplies (also see Section 6 Troubleshooting). Wait 5 minutes for the cut-out to reset and re-start the motor. If the motor continues to cut out contact your authorised service agent.

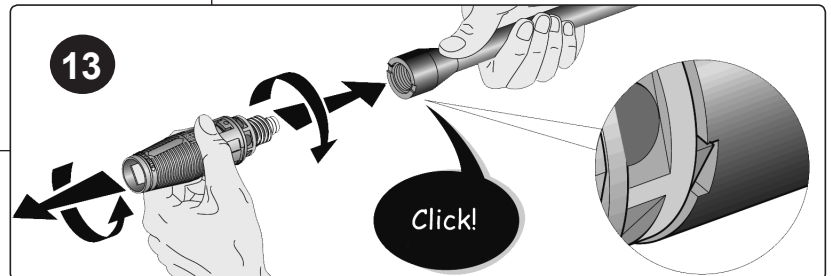
## 6. TROUBLESHOOTING GUIDE

SYMPTOMS	REASON	REMEDY
Motor will not start or stop while operating.	Loose or disconnected plug. Tripped pressure washer thermal switch. Power Blast trigger not operating properly.	Reconnect plug. Allow to cool and restart unit. Contact authorised service agent.
Circuit breaker trips or fuse blown.	Circuit Overload. Extension cord too long or wire size too small. Nozzle partially blocked, causing excessive pressure.	Check that the circuit is rated 13amps or greater. Disconnect all loads on the circuit. Use proper extension cord as recommended in section1. Clean nozzle as described in maintenance section.
Water or oil leaking from bottom of pump.	A small amount of leakage is normal.	If excessive leaking occurs contact authorised service agent.
Trigger will not move.	Gun safety lock engaged.	Release safety lock.
Unit will not stop when trigger is released.	Trigger system not operating properly.	Contact authorised service agent.
Motor running but pump not building maximum pressure or has irregular pressure.	Water supply not turned on. Unit has been stored in freezing temperatures. Water inlet screen clogged. Kink in supply hose. Nozzle worn out. Air in pump. Suction or discharge valves clogged or worn out.	Turn on water supply. Thaw out unit completely including hose, gun and attachments. Clean screen as described in maintenance section. Straighten hose. Replace nozzle. Let pressure washer run with gun open and lance removed until a steady stream of water is released. Contact authorised service agent.

## 7. MAINTENANCE & STORAGE



☐ **WARNING!** Ensure the pressure washer is switched off and unplugged from the mains electrical power supply and turned off at the mains water tap before performing any maintenance tasks. Check, clean or renew the inlet filter (which is fitted inside the hose connector, see fig.12) after every 50 hours of use.



### 7.1 Nozzles

- 7.1.1 Ensure that both nozzles are kept clean and free of debris.
- 7.1.2 The variable nozzle should be lubricated regularly. Clogging of the nozzle causes the pump pressure to be too high and cleaning is immediately required.
- 7.1.3 Separate the nozzle from the lance by unscrewing anti-clockwise (fig.13).
- 7.1.4 Clear the nozzle of any debris.
- 7.1.5 Flush the nozzle with water.
- 7.1.6 Reconnect the nozzle to the lance. Ensure that the nozzle clicks into place.

### 7.2 Water Screen

- 7.2.1 The pressure washer is equipped with a water inlet filter to protect the pump.
- 7.2.2 To clean the conical filter, remove quick fit connection and the filter from the pump inlet.
- 7.2.3 Backflush the filter to clean.
- 7.2.4 Replace screen and quick connection immediately to prevent any ingress of foreign matter into the pump.

### 7.3 Cooling System

- 7.3.1 The air vents, in and around the pressure washer, must be kept clean and free of any obstructions to ensure proper air cooling of the motor during operation.

☐ **WARNING!** Prevent water from penetrating the vents of the pressure washer to minimise the risk of damage to the machine and to reduce the risk of shock to the operator.

- 7.4 **General** Check unit, gun, nozzle, hose, connections and cables for damage. Immediately replace or repair with genuine parts.

### 7.5 Storage

- 7.5.1 Store in a location where the washer will not be subject to freezing conditions.
- 7.5.2 Make sure that the pressure washer has been drained of water and remove the hoses.



**NOTE:** It is our policy to continually improve products and as such we reserve the right to alter data, specifications and component parts without prior notice.

**IMPORTANT:** No liability is accepted for incorrect use of this product.

**WARRANTY:** Guarantee is 12 months from purchase date, proof of which will be required for any claim.

**INFORMATION:** For a copy of our latest catalogue and promotions call us on 01284 757525 and leave your full name and address, including postcode.



Sole UK Distributor, Sealey Group,  
Kempson Way, Suffolk Business Park,  
Bury St. Edmunds, Suffolk,  
IP32 7AR

☎ 01284 757500  
☎ 01284 703534

🌐 [www.sealey.co.uk](http://www.sealey.co.uk)  
✉ [sales@sealey.co.uk](mailto:sales@sealey.co.uk)



# EC DECLARATION OF CONFORMITY

We the sole importers into the UK, hereby declare that the equipment described below

Description and Function:..... Pressure Washer 2950psi with TSS & Rotablast Nozzle 6ltr/Min 230V.....

Model/Type:..... PC2700.....

Manufacturing Date / Serial number (optional).....

Manufacturer's authorised representative within the EC: **Jack Sealey Ltd. Kempson Way, Suffolk Business Park, Bury St. Edmunds, Suffolk, IP32 7AR**

Conforms to the requirements of the following Directives, as indicated.


- 2006/42/EC Machinery Directive
- 2000/14/EC Outdoor Noise Emissions Directive
- 2006/95/EC Low Voltage Directive
- 2002/96/EC WEEE Directive
- 2004/108/EC EMC Directive
- 2002/95/EC RoHS Directive
- 93/68/EEC CE Marking Directive
- 97/23/EC Pressure Equipment Directive

And the following harmonised standard(s): **BS EN 60335 part 1 + A2: 2006** ..... **BS EN 60335 part 2-79: 2009**.....

**BS EN 55014 part 1: 2006 + A1: 2009** ..... **BS EN 61000 part 6-3: 2007**.....

National technical standards and specifications (if applicable):.....

Technical file compiled by: **Jack Sealey Ltd.**

Signed:..... 

Date:..... 07-May-2010.....

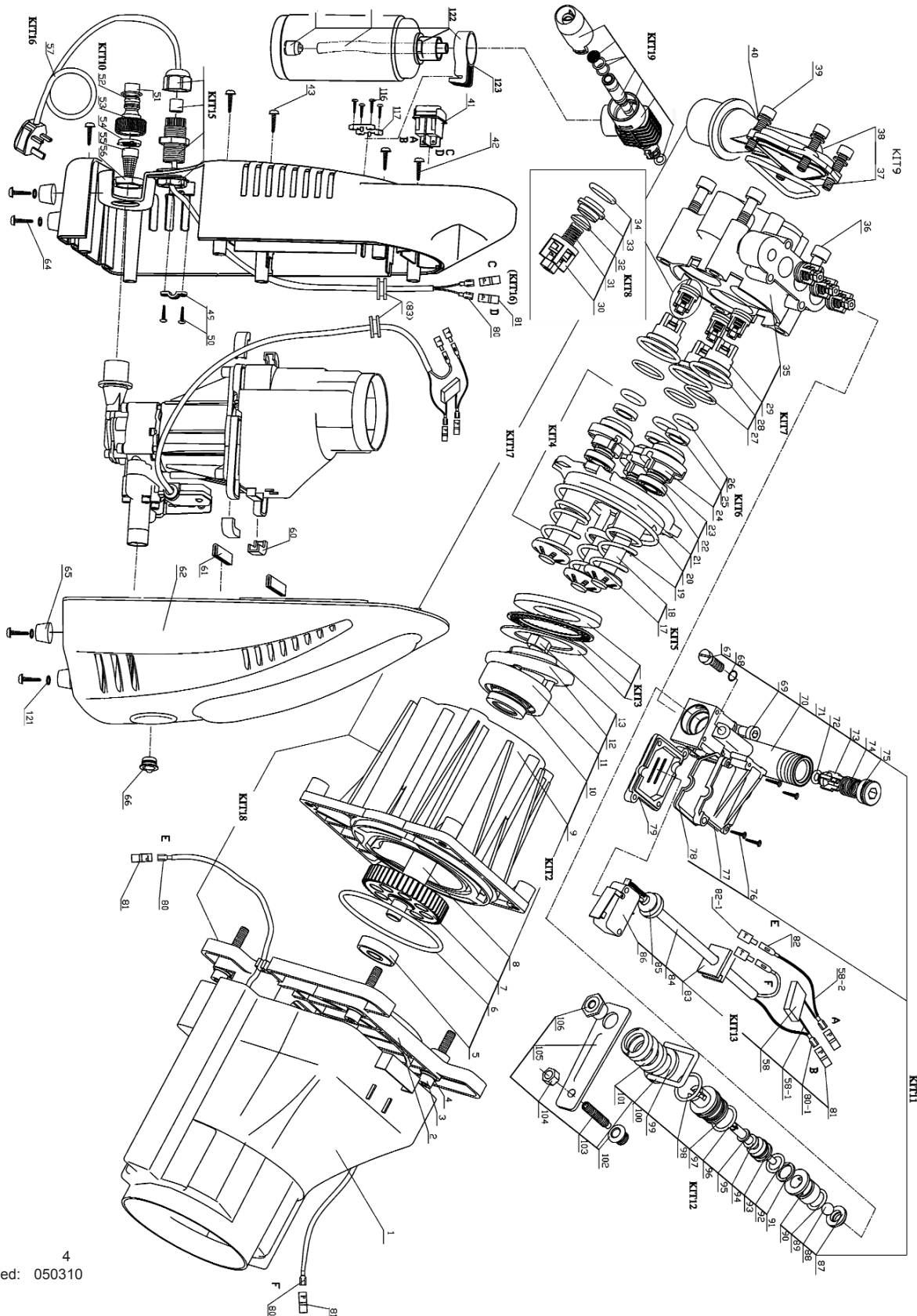
Place: Bury St.Edmunds.

Name:..... Mark Sweetman.....

Position:..... Managing Director.....

Being the responsible person appointed by the manufacturer.





Issue: 4  
Date Issued: 050310

**NOTE:** It is our policy to continually improve products and as such we reserve the right to alter data, specifications and component parts without prior notice.

**IMPORTANT:** No liability is accepted for incorrect use of product.

**WARRANTY:** Guarantee is 12 months from purchase date, proof of which will be required for any claim.

**INFORMATION:** For a copy of our latest catalogue and promotions call us on 01284 757525 and leave your full name and address, including postcode.



ITEM	PART NO	DESCRIPTION	ITEM	PART NO	DESCRIPTION
	<b>PC2700/KIT 2</b>	<b>PUMP PEDESTAL ASSEMBLY</b>		<b>PC2700/KIT 11</b>	<b>OUTLET BODY ASSY</b>
5	FNA.23001100	BEARING	67	FNA.43010200	SCREW
6	FNA.22005800	O-RING	68	FNA.22004800	SMALL O-RING
7	FNA.43011300	GEAR WHEEL	69	FNA.21006700	SCREW
8	FNA.43008400	GEAR SHAFT	70	FNA.43014000	OUTLET BODY(MOLD B)
9	FNA.43060300	PUMP BASE PARTS	71	FNA.22005400	O-RING
10	FNA.22005600	SEAL OIL	72	FNA.22004500	O-RING
11	FNA.23001000	BEARING	73	FNA.42021700	BIG VALVE CORE
12	FNA.43014600	WOBBLE PLATE	74	FNA.43010400	SPRING
13	FNA.21006500	WOBBLE PLATE SCREW	75	FNA.43010100	BOLT
	<b>KIT3 PC2700/KIT 3</b>	<b>THRUST BEARING ASSY</b>	76	FNA.21011300	SCREW
	<b>PC2700/KIT 4</b>	<b>PISTON BODAY ASSY</b>	77	FNA.42028500	BOTTOM ELECTRICAL BOX
19	FNA.43010500	PISTON SPRING	78	FNA.41003600	SEAL
20	FNA.26001300	RUBBER SEAL	79	FNA.42030000	UPPER ELECTRICAL BOX
21	FNA.43008800	PISTON BODY	87	FNA.42021900	STEEL BALL COVER
22	FNA.41003400	PISTON SEAL	88	FNA.23000400	STEEL BALL
23	FNA.22005200	SMALL O-RING	89	FNA.22004600	O-RING
	<b>PC2700/KIT 5</b>	<b>PISTON ASSY</b>	90	FNA.42022000	SPILL VALVE SHELL
17	FNA.43009100	PISTON SPRING BASE		<b>PC2700/KIT 12</b>	<b>VALVE SHEATH ASSEMBLY</b>
18	FNA.43010000	PISTON	91	FNA.41003000	CLOSING RING
	<b>PC2700/KIT 6</b>	<b>PILOT SHEATH ASSY</b>	92	FNA.22004600	O-RING
24	FNA.42020800	PILOT SHEATH	93	FNA.43008200	VALVE PISTON
25	FNA.42021200	BAFFLE	94	FNA.22006900	O-RING
26	FNA.22005100	O-RING	95	FNA.41009300	CLOSING RING
	<b>PC2700/KIT 7</b>	<b>PUMP BODY ASSY</b>	96	FNA.22003700	O-RING
27	FNA.22004300	SMALL O-RING	97	FNA.42021800	SPILL VALVE
28	FNA.22004200	BIG O-RING	98	FNA.22004700	O-RING
29	FNA.42020900	ONE-WAY OUTLET COVER	99	FNA.43009400	BAFFLE
35	FNA.43016800	PUMP BODY	100	FNA.43009300	U PIN
	<b>PC2700/KIT 8</b>	<b>CHECK VALVE ASSY</b>	101	FNA.43009700	SPRING
30	FNA.42021100	CHECK VALVE PEDESTAL	102	FNA.41003500	FEELER LEVER JACKET
31	FNA.43010300	SPRING	103	FNA.43008300	FEELER LEVER
32	FNA.43009200	CHECK VALVE	104	FNA.21006800	FEELER LEVER NUT
33	FNA.42021000	CHECK VALVE COVER	105	FNA.43009500	TOTAL STOP BLADE
34	FNA.22004400	O-RING	106	FNA.25000300	NUT
	<b>PC2700/KIT 9</b>	<b>INLET PIPE ASSY</b>		<b>PC2700.KIT13</b>	<b>MICRO SWITCH ASSY</b>
37	FNA.41003200	INLET PIPE SEAL RING	84	FNA.31001900	CORD, MICRO SWITCH
38	FNA.42043800	INLET PIPE	58-2	FNA.31002400	CORD
55	FNA.42000300	INLET PIPE FILTER	86	FNA.33000700	MICRO SWITCH
	<b>PC2700/KIT 10</b>	<b>INLET PIPE ADAPTOR ASSY</b>	58	FNA.37000400	CAPACITANCE
52	FNA.22005300	O-RING	82-1	FNA.37008300	SLEEVE
53	FNA.42044000	INLET PIPE ADAPTOR	82	FNA.37009200	SHORT STRAIGHT INSERT
54	FNA.41003300	SEAL	80-1	FNA.37009300	STRAIGHT SLOT
			85	FNA.41003700	ROUND SLEEVE
			83	FNA.41003800	SQUARE SLEEVE
			58-1	FNA.42011300	THERMOPLASTIC TUBE

**NOTE:** It is our policy to continually improve products and as such we reserve the right to alter data, specifications and component parts without prior notice.

**IMPORTANT:** No liability is accepted for incorrect use of product.

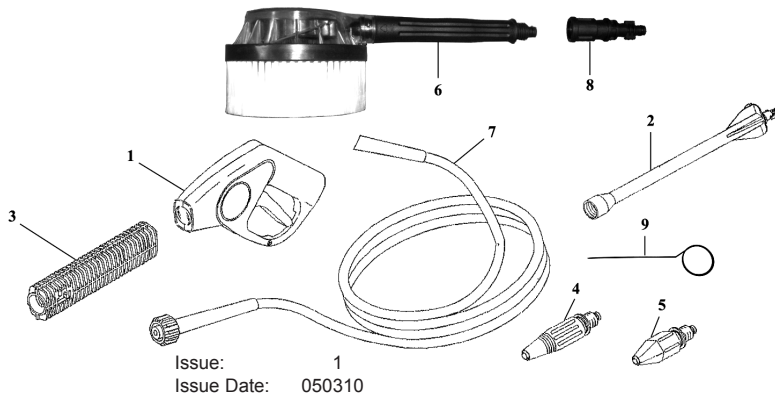
**WARRANTY:** Guarantee is 12 months from purchase date, proof of which will be required for any claim.

**INFORMATION:** For a copy of our latest catalogue and promotions call us on 01284 757525 and leave your full name and address, including postcode.

ITEM	PART NO	DESCRIPTION
<b>KIT15</b>	<b>PC2700.KIT15</b>	<b>CABLE GROMMET ASSEMBLY</b>
	<b>PC2700.KIT16</b>	<b>CABLE ASSY</b>
57	FNA.31004301	CABLE
80	FNA.37000100	SLIP-ON RECEPTACLE
81	FNA.37008400	SQUARE SLEEVE
83	FNA.41003800	SLEEVE
	<b>PC2700/KIT 17</b>	<b>PUMP ASSY</b>
36	FNA.21006400	SCREW
39	FNA.21006600	SCREW
40	FNA.21008400	PLAIN CUSHION
	<b>PC2700/KIT 18</b>	<b>MOTOR-PUMP ASSY</b>
1	FNA.42022500	MOTOR COVER
2	FNA.10014300	MOTOR
3	FNA.21007400	BOLT
4	FNA.21007300	RUBBER PACKING
<b>KIT19</b>	<b>PC2700/KIT 19</b>	<b>SOAP BOTTLE NOZZLE ASSY</b>
122	FNA.10090200	SOAP BOTTLE ASSY
123	FNA.42029400	HOOK FOR SOAP HOOK

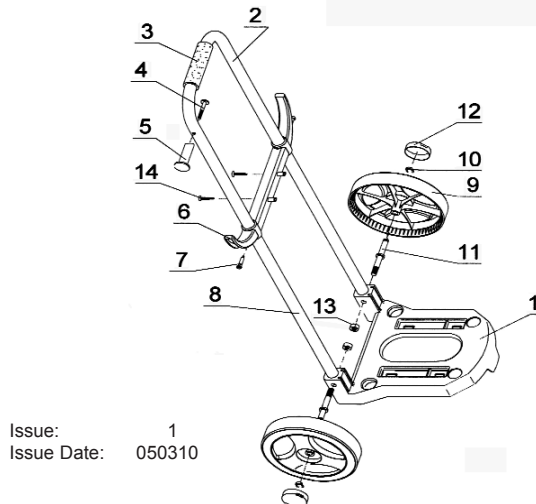
ITEM	PART NO	DESCRIPTION
	<b>PC2700/KIT 20</b>	<b>COMPLETE CASE ASSEMBLY (N/S)</b>
41	FNA.33000800	SWITCH, MAIN
42	FNA.21013800	SCREW
43	FNA.23013900	SCREW
49	FNA.42023100	CABLE PLATE
50	FNA.21009700	SCREW
51	FNA.42021600	INLET PIPE ADAPTOR COVER
56	FNA.42044500	INLET PIPE NUT
60	FNA.41004200	RUBBER PLATE
61	FNA.41004300	RUBBER PLATE
62	FNA.42029500	FRONT CASE (RED)
64	FNA.21013800	SCREW
65	FNA.42031300	FOOT
66	FNA.42045300	OUTLET COVER
116	FNA.21009600	SCREW
117	FNA.42028900	HOOK
121	FNA.21001600	PLAIN CUSHION

## ACCESSORIES



ITEM	PART NUMBER	DESCRIPTION
1	FNA.10009500	GUN
2	FNA.10011200	H100 LANCE
3	FNA.10009400	HALF LANCE
4	FNA.10009600	NORMAL NOZZLE
5	FNA.10094500	TURBO NOZZLE
6	FNA.42042300	ROTARY BRUSH
7	FNA.42025201	HP HOSE
8	FNA.42038301	#3 ADAPTOR
9	FNA.81001700	NEEDLE PROBE

## TROLLEY PARTS



ITEM	PART NUMBER	DESCRIPTION
1	FNA.42032700	TROLLEY BASE
2	FNA.43004300	UPPER TROLLEY TUBE
3	FNA.42014800	HANDLE SLEEVE
4	FNA.21010500	SCREW
5	FNA.42033300	HOOK
6	FNA.42033400	HOOK/CONNECTOR
7	FNA.21011000	SCREW
8	FNA.43004200	STRAIGHT TROLLEY TUBE
9	FNA.42027300	WHEEL
10	FNA.21033100	AXLE CLIP
11	FNA.43002000	WHEEL AXLE
12	FNA.42027700	WHEEL COVER
13	FNA.21002100	NUT
14	FNA.21013100	SCREW
-	FNA.10081000	TROLLEY ASSY (parts 1-14)

**NOTE:** It is our policy to continually improve products and as such we reserve the right to alter data, specifications and component parts without prior notice.

**IMPORTANT:** No liability is accepted for incorrect use of product.

**WARRANTY:** Guarantee is 12 months from purchase date, proof of which will be required for any claim.

**INFORMATION:** For a copy of our latest catalogue and promotions call us on 01284 757525 and leave your full name and address, including postcode.