

Thank you for purchasing a Sealey product. Manufactured to a high standard this product will, if used according to these instructions and properly maintained, give you years of trouble free performance.

⚠ IMPORTANT: PLEASE READ THESE INSTRUCTIONS CAREFULLY. NOTE THE SAFE OPERATIONAL REQUIREMENTS, WARNINGS, AND CAUTIONS. USE THIS PRODUCT CORRECTLY, AND WITH CARE FOR THE PURPOSE FOR WHICH IT IS INTENDED. FAILURE TO DO SO MAY CAUSE DAMAGE AND/OR PERSONAL INJURY AND WILL INVALIDATE THE WARRANTY.

1. SAFETY INSTRUCTIONS

1.1 ELECTRICAL SAFETY

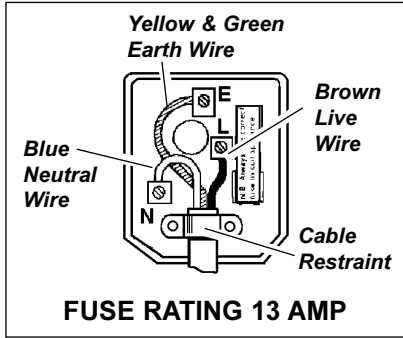
⚠ WARNING! It is the responsibility of the owner and the operator to read, understand and comply with the following: You must check all electrical products, before use, to ensure that they are safe. You must inspect power cables, plugs, sockets and any other connectors for wear or damage. You must ensure that the risk of electric shock is minimised by the installation of appropriate safety devices. A Residual Current Circuit Breaker (RCCB) should be incorporated in the main distribution board. We also recommend that a Residual Current Device (RCD) is used. It is particularly important to use an RCD with portable products that are plugged into a supply which is not protected by an RCCB. If in any doubt consult a qualified electrician. You may obtain a Residual Current Device by contacting your Sealey dealer.

You must also read and understand the following instructions concerning electrical safety.

- 1.1.1 The **Electricity at Work Act 1989** requires that all portable electrical appliances, if used on business premises, are tested by a qualified electrician, using a Portable Appliance Tester (PAT), at least once a year.
- 1.1.2 The **Health & Safety at Work Act 1974** makes owners of electrical appliances responsible for the safe condition of those appliances and the safety of the appliance operators. **If in any doubt about electrical safety, contact a qualified electrician.**
- 1.1.3 Ensure that the insulation on all cables and on the appliance is safe before connecting it to the power supply. See 1.1.1. and 1.1.2. and use a Portable Appliance Tester.
- 1.1.4 Ensure that cables are always protected against short circuit and overload.
- 1.1.5 Regularly inspect power supply cables and plugs for wear or damage and check all connections to ensure that none is loose.

1.1.6 **Important:** Ensure that the voltage marked on the appliance matches the power supply to be used and that the plug is fitted with the correct fuse - see fuse rating at right.

- 1.1.7 **DO NOT** pull or carry the appliance by the power cable.
- 1.1.8 **DO NOT** pull the plug from the socket by the cable.
- 1.1.9 **DO NOT** use worn or damaged cables, plugs or connectors. Immediately have any faulty item repaired or replaced by a qualified electrician. When a BS 1363/A UK 3 pin plug is damaged, cut the cable just above the plug and **dispose of the plug safely.**



- a) Connect the **GREEN/YELLOW earth wire to the earth terminal 'E'**.
- b) Connect the **BROWN live wire to the live terminal 'L'**.
- c) Connect the **BLUE neutral wire to the neutral terminal 'N'**.
- d) **After wiring, check that there are no bare wires, that all wires have been correctly connected, that the cable outer insulation extends beyond the cable restraint and that the restraint is tight.**

Double insulated products, which are always marked with this symbol , are fitted with live (brown) and neutral (blue) wires only.

To rewire, connect the wires as indicated above - **DO NOT** connect either wire to the earth terminal.

- 1.1.10 Products which require more than 13 amps are supplied without a plug. In this case you must contact a qualified electrician to ensure that a suitably rated supply is available. We recommend that you discuss the installation of an industrial round pin plug and socket with your electrician.
- 1.1.11 If an extension reel is used it should be fully unwound before connection. A reel with an RCD fitted is preferred since any appliance plugged into it will be protected. The cable core section is important and should be at least 1.5mm², but to be absolutely sure that the capacity of the reel is suitable for this product and for others which may be used in the other output sockets, we recommend the use of 2.5mm² section cable.

1.2 GENERAL SAFETY

- ✓ Disconnect the cleaner from the power supply before servicing, changing accessories, or performing any maintenance.
- ✓ Use only genuine parts and accessories. Unauthorised parts and accessories may be dangerous and will invalidate your warranty.
- ✓ Maintain the cleaner in good condition. Use an authorised agent for servicing. Keep machine clean, but **DO NOT** use solvents.
- ✗ **DO NOT** operate the unit without the cartridge filter in place (except when wet vacuuming). **Using the cleaner without a cartridge filter will cause machine faults and will invalidate your warranty.**
- ✓ Wear protective clothing and gloves.
- ✗ **DO NOT** allow children or untrained persons to operate the cleaner.
- ✗ **DO NOT** place attachments close to your face (especially eyes, ears, etc). Do not point the hose end at other persons or animals.
- ▲ **DANGER!** **DO NOT** vacuum hot or glowing ash, cigarette ends, inflammable, explosive, corrosive or other dangerous substances.
- ✗ **DO NOT** operate the unit without the dust bag or optional cartridge filter (except when wet vacuuming).
- ✗ **DO NOT** leave machine running unattended. Turn power supply OFF, and **DO NOT** leave the vicinity until motor has come to a complete stop.
- ✗ **DO NOT** operate the cleaner while under the influence of drugs, alcohol or impairing medication, or if you are tired.
- ✗ **DO NOT** use the cleaner in the rain or in very damp conditions.
- ✗ **DO NOT** use the cleaner for a task it is not designed to perform.

2. INTRODUCTION & SPECIFICATION

Introduction: Powerful 1400Watt motor head gives incredible suction. May also be used as a blower. Integral three-pin BS socket provides power supply for dust-free tools up to 1400W. When used in conjunction with a power tool the cleaner auto-starts when the tool is started and auto-stops 10 seconds after the tool is switched off - to ensure tool and hose are left free of dust. Includes stainless steel drum & stainless steel telescopic rigid extension tube as well as tools for wet and dry operations. Tool stowage points on head. Supplied with cartridge filter and wet-use foam filter.

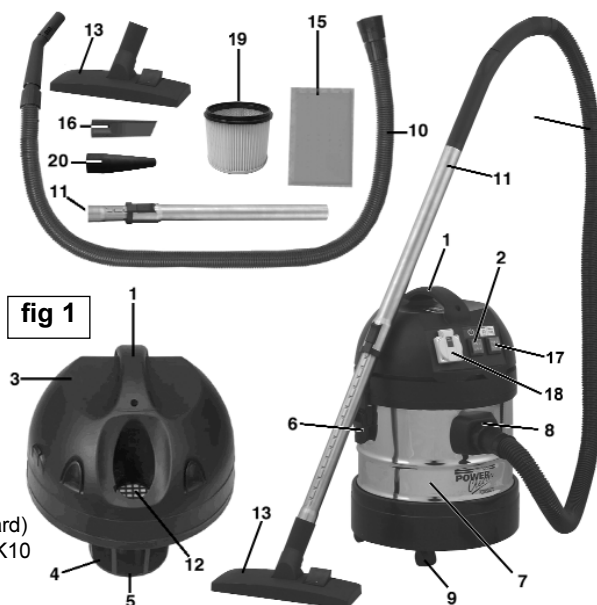
Specification	
Motor:	230V 1400W
Container - PC200SDAUTO.V2:	20ltr
Container - PC300SDAUTO.V2:	30ltr
Weight - PC200SDAUTO.V2:	8kg
Weight - PC300SDAUTO.V2:	9kg
Vac AccessoriesØ:	35mm

3. CONTENTS AND SPECIFICATION

3.1 Carton content

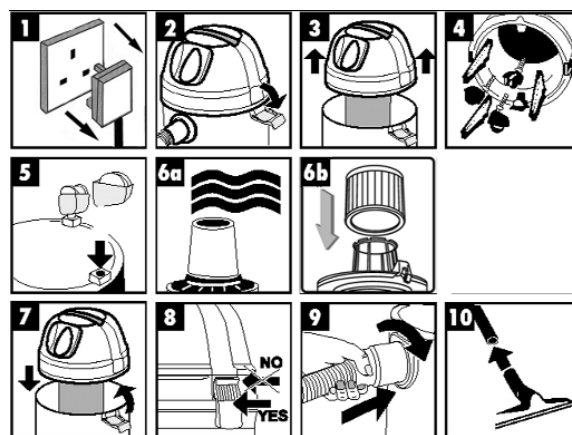
- 3.1.1 Carefully unpack the carton.
- 3.1.2 Locate the two side clasps (fig. 1.6) which hold the top section (fig.1.3) in place.
- 3.1.3 Undo the clasps, remove the top section and take out the items in the container.
- 3.1.4 Check and identify each component as listed below. If anything is missing or damaged please contact your supplier immediately.

Item	Description	Item	Description
1	Handle	11	Telescopic suction tube
2	ON/OFF switch	12	Blow connection
3	Top section	13	Combination nozzle
4	Filter basket	15	Foamed plastic filter
5	Safety float valve	16	Crevice nozzle
6	Clasp	17	Dust free tool ON/OFF
7	Container, (Stainless Steel)	18	3 pin socket for tool
8	Vacuum hose connection	19	Cartridge filter (fitted as standard)
9	Castors	20	Dust free tool adaptor DFS/AK10
10	Flexible vacuum hose		



4. ASSEMBLY

- 4.1 Ensure the mains plug is disconnected.
 - 4.2 Undo clasps.
 - 4.3 Lift off the top section assembly.
 - 4.4 Remove contents from inside the container.
 - 4.5 Turn the container upside down and insert the castors ensuring they are pushed all the way in.
 - 4.6a For wet vacuum cleaning fit the supplied foamed plastic filter.
 - 4.6b For dry vacuum cleaning use the cartridge filter supplied.
- NOTE: Do not operate the cleaner without a cartridge filter fitted as this will damage the machine and invalidate your warranty.**
- 4.7 Replace the top section onto the container.
 - 4.8 Align up the top section with the clasps and snap into place, by applying pressure at the mid point of the clasps.
 - 4.9 Insert the large end of the hose into the front inlet of the container and lock in place by turning clockwise a quarter turn.
 - 4.10 Choose the desired nozzle and push it onto the telescopic suction tube.



5. DRY VACUUM CLEANING

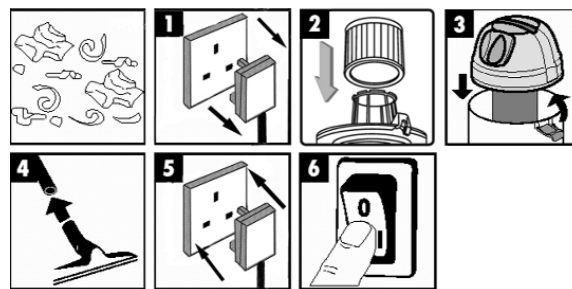
- WARNING! Ensure you read, understand and apply Section 1 'Safety Instructions'.**

Reminder: DO NOT vacuum hazardous substances. Use of an incorrect cartridge filter will invalidate your warranty.

- 5.1 Ensure the machine is unplugged from the power supply.
- 5.2 Remove the top section and fit the cartridge filter down over the filter basket and push fully home.
- 5.3 Reposition the head onto the drum body, and clip in place.
- 5.4 Insert the larger end of the flexible hose into the front inlet on the container and lock in place. Push the required attachment onto the free end of the hose.
- 5.5 Plug in the power supply.
- 5.6 Switch to the 'On' (position 'I').
- 5.7 When you have completed vacuuming, press the switch to 'Off' (position 'O') and unplug from power supply.

Regularly check the dust bag and dispose of safely when it is 2/3 full. The bag is manufactured so that only air, not dust, will pass through the paper and as such the dust bag **must not** be re-used. If you wish to use the machine for a wet application and the dust bag is less than 2/3 full, carefully remove the bag, store for future use, and wipe the tank clean.

- DO NOT** use the dust bag for wet or sharp materials.



6. WET VACUUM CLEANING

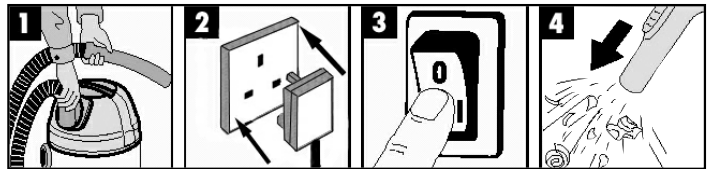
- WARNING! Ensure you read, understand and apply Section 1 'Safety Instructions'. Reminder: Remove plug from power supply before opening unit. DO NOT vacuum solvents, explosives, inflammable and/or hazardous liquids such as petrol, oil, spirits, paint, thinners, acids etc.**
- WARNING! Not designed for liquid storage. Always empty liquids after use and before storing.**

- 6.1 Ensure the machine is unplugged from the power supply. Make sure the tank is clean and free from dust and dirt.
- 6.2 Remove the cartridge filter and fit a foam filter over the filter basket. Replace the top section onto the container.
- 6.3 To the same flexible hose as used in dry cleaning fit the desired nozzle.
- 6.4 Ensure the switch is 'Off' (position 'O') before plugging into the power supply.
- 6.5 Press the switch to 'On' (position 'I').

Note: To vacuum large quantities of liquid, from a sink or tank etc, do not immerse the nozzle completely in the liquid, leave a gap at the top of the nozzle opening to allow an air inflow. The machine is fitted with a float valve which stops the suction action when the tank has reached its maximum capacity. The user will notice an increase in motor speed. When this happens, turn off the machine, disconnect from power supply, remove the head from the container and empty the liquid into a suitable receptacle or drain. To continue vacuuming, refit the head and proceed. After wet vacuuming, turn the machine off and unplug from power supply. Empty the container and clean and dry the inside and outside before storage. **Remember!** After wet vacuuming the foam filter must be removed and a cartridge filter must be fitted before dry vacuuming again.

7. BLOWING

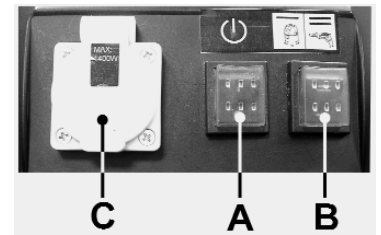
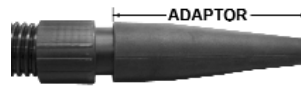
- 7.1 Push the large end of the flexible hose into the blow connection in the top section.
- 7.2 Ensure the power switch is turned off and plug in the power supply.
- 7.3 Switch on the power (position 'I').
- 7.4 The unit will now blow through the vacuum hose and can be used to clear obstructions within the pipe.



WARNING! If after a few seconds the hose is still blocked turn of the unit and clear the hose manually.

8. USING DUST FREE TOOLS

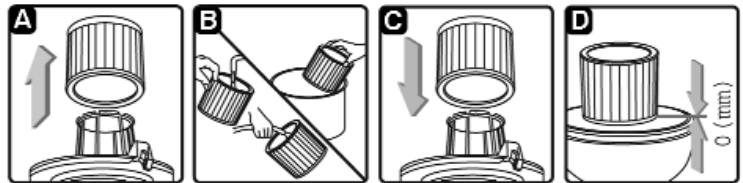
- 8.1 Ensure that the cleaner switch (A) and the dust free tool switch (B) on the vacuum cleaner are both in the OFF position.
 - 8.2 Connect the flexible hose to the front inlet on the cleaner.
 - 8.3 Connect the other end of the hose to the dust outlet on the dust free tool using the rubber adaptor supplied. Part no. DFS/AK10 (See above), the tapered end of which can be cut back to suit the tool outlet diameter.
 - 8.4 Ensure that the switch on the dust free tool is in the OFF position, then plug the tool into the power outlet (C) on the vacuum cleaner.
 - 8.5 Keep the dust free tool in the OFF position whilst you move both switches (A) & (B) on the cleaner into the ON position.
 - 8.6 The cleaner will start automatically when you operate the switch on the dust free tool.
 - 8.7 When you switch the dust free tool OFF the cleaner will continue to run for ten seconds then shut down automatically.
 - 8.8 When you have finished using the tool, move both switches (A) & (B) on the cleaner to the OFF position before unplugging the tool.
- NOTE: If no tool is plugged in, but the tool switch (B) on the cleaner is in the ON position the cleaner will not start. Move the tool switch to the OFF position and operate the cleaner as normal using the cleaner ON/OFF switch (A).



9. MAINTENANCE

9.1.1 GENERAL MAINTENANCE.

- 9.1.2 Ensure the machine is unplugged from the power supply.
- 9.1.3 Disconnect the hose from the container.
- 9.1.4 Undo the clasp and remove motor head from the container.
- 9.1.5 Clear out any dirt or debris from the container and hose.
- 9.1.6 Clean the foam filter by washing it in a mild soapy solution.
- 9.1.7 Check that the telescopic suction tube operates smoothly, and check the power cable to make sure it has not received any damage.



9.2.1 CARTRIDGE FILTER MAINTENANCE. (Handle the filter carefully when cleaning or installing.)

- 9.2.2 Carefully remove the optional cartridge filter (A) and inspect it for damage. A filter that has small holes or tears in it will not perform efficiently and should be replaced.
- 9.2.3 To clean a dry filter, tap it inside a waste bin. (B)
- 9.2.4 Do not use the filter if it becomes wet as the filter will clog quickly and be very difficult to clean. (The cartridge filter is designed for dry vacuuming only.) Should the filter be inadvertently wetted it should be rinsed from the inside (B) and allowed to air dry for 24 hours.
- 9.2.5 To fit a new/cleaned filter slide it over the filter basket (C) and push it fully home (D)

10. TROUBLESHOOTING

Cleaner will not operate.	No power supply. Faulty power cable, switch or motor. Container full of liquid. Dust free tool switch in 'ON' position	Check supply. Check and repair or replace faulty item. Empty container. Switch dust free tool switch 'OFF'
Dust comes from the motor cover.	Cartridge filter missing or damaged.	Fit or replace cartridge filter.
Reduced efficiency and increased motor speed/vibration.	Container full / filter clogged Nozzle, hose or container inlet blocked.	Empty container / clean or replace filter. Check nozzle, hose and container inlet for blockage.

9. CONSUMABLES

MODEL	PC200SDAUTO.V2	PC300SDAUTO.V2
Cartridge Filter (Must be used for dry vacuuming)	Part No. PC200CF	Part No. PC200CF
Foam Filter	Part No. PC200FF10	Part No. PC200FF10
Dust Bags (Optional)	Part No. PC200PB5	Part No. PC300PB5

IMPORTANT! IF THE MACHINE IS USED WITHOUT A CARTRIDGE FILTER FITTED THE MOTOR WILL BURN OUT EVENTUALLY AND YOUR GUARANTEE WILL BE INVALIDATED. ALWAYS KEEP A SPARE CARTRIDGE FILTER HANDY.

INDUSTRIAL VACUUM CLEANERS WITH AUTO START/STOP
Models: PC200SDAUTO.V2 & PC300SDAUTO.V2
98/37/EC Machinery Directive
73/23/EEC Low Voltage Directive
89/336/EEC EMC Directive
93/68/EEC CE Marking Directive

Declaration of Conformity

We, the sole importer into the UK, declare that the products listed here are in conformity with the following standards and directives.



The construction files for these products are held by the Manufacturer and may be inspected, by a national authority, upon request to Jack Sealey Ltd.

Signed by Mark Sweetman

14th December 2005

For Jack Sealey Ltd.
Sole importer into the UK
of Sealey Power Products

NOTE: It is our policy to continually improve products and as such we reserve the right to alter data, specifications and component parts without prior notice.

IMPORTANT: No liability is accepted for incorrect use of this product.

WARRANTY: Guarantee is 12 months from purchase date, proof of which will be required for any claim.

INFORMATION: For a copy of our catalogue and latest promotions call us on 01284 757525 and leave your full name, address and postcode.



Sole UK Distributor
Sealey Group,
Bury St. Edmunds, Suffolk.



01284 757500



01284 703534



www.sealey.co.uk



sales@sealey.co.uk