



## INSTRUCTIONS FOR

# 20LTR WET & DRY VACUUM CLEANER 1250W

MODEL NO: **PC195SD**

Thank you for purchasing a Sealey product. Manufactured to a high standard, this product will, if used according to these instructions, and properly maintained, give you years of trouble free performance.

**IMPORTANT:** PLEASE READ THESE INSTRUCTIONS CAREFULLY. NOTE THE SAFE OPERATIONAL REQUIREMENTS, WARNINGS & CAUTIONS. USE THE PRODUCT CORRECTLY AND WITH CARE FOR THE PURPOSE FOR WHICH IT IS INTENDED. FAILURE TO DO SO MAY CAUSE DAMAGE AND/OR PERSONAL INJURY AND WILL INVALIDATE THE WARRANTY. KEEP THESE INSTRUCTIONS SAFE FOR FUTURE USE.



Refer to  
Instruction  
Manual

## 1. SAFETY

### 1.1. ELECTRICAL SAFETY

- ❑ **WARNING!** It is the user's responsibility to check the following:  
Check all electrical equipment and appliances to ensure that they are safe before using. Inspect power supply leads, plugs and all electrical connections for wear and damage. Sealey recommend that an RCD (Residual Current Device) is used with all electrical products. You may obtain an RCD by contacting your local Sealey dealer.

If the cleaner is used in the course of business duties, it must be maintained in a safe condition and routinely PAT (Portable Appliance Test) tested.

Electrical safety information, it is important that the following information is read and understood.

- 1.1.1. Ensure that the insulation on all cables and on the appliance is safe before connecting it to the power supply.
- 1.1.2. Regularly inspect power supply cables and plugs for wear or damage and check all connections to ensure that they are secure.
- 1.1.3. **Important:** Ensure that the voltage rating on the appliance suits the power supply to be used and that the plug is fitted with the correct fuse - see fuse rating in these instructions.
  - \* **DO NOT** pull or carry the appliance by the power cable.
  - \* **DO NOT** pull the plug from the socket by the cable. Remove the plug from the socket by maintaining a firm grip on the plug.
  - \* **DO NOT** use worn or damaged cables, plugs or connectors. Ensure that any faulty item is repaired or replaced immediately by a qualified electrician.
- 1.1.4. This product is fitted with a BS1363/A 13 Amp 3 pin plug.  
If the cable or plug is damaged during use, switch the electricity supply and remove from use.  
Replace a damaged plug with a BS1363/A 13 Amp 3 pin plug. If in doubt contact a qualified electrician.

Class II products are wired with live (brown) and neutral (blue) only are marked with the Class II symbol;



A) Connect the BROWN live wire to the live terminal 'L'.

B) Connect the BLUE neutral wire to the neutral terminal 'N'.

C) After wiring, check that there are no bare wires and ensure that all wires have been correctly connected.

Ensure that the cable outer sheath extends inside the cable restraint and that the restraint is tight.

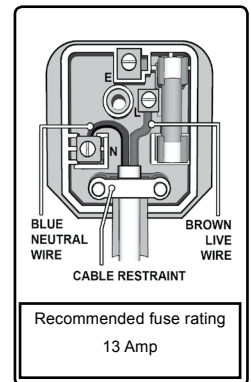
**DO NOT** connect either wire to the earth terminal.

Sealey recommend that repairs are carried out by a qualified electrician.

- 1.1.5. If an extension reel is used it should be fully unwound before connection. A reel with an RCD fitted is preferred since any appliance plugged into it will be protected. The cable core section is important and should be at least 1.5mm<sup>2</sup>, but to be absolutely sure that the capacity of the reel is suitable for this product and for others which may be used in the other output sockets, we recommend the use of 2.5mm<sup>2</sup> section cable.

#### GENERAL SAFETY

- ✓ Disconnect the cleaner from the power supply before servicing, changing accessories, or performing any maintenance.
- ✓ Use only genuine parts and accessories. Unauthorised parts and accessories may be dangerous and will invalidate your warranty.
- ✓ Maintain the cleaner in good condition. Use an authorised agent for servicing. Keep machine clean, but **DO NOT** use solvents.
- ✓ For dry vacuuming ensure the dry reuseable filter (6) or household collector bag (7), see fig.1, is in place before operating the cleaner.
- ✓ For wet vacuuming ensure the wet filter (10), see fig.1, is in place before operating the cleaner.
- ❑ **WARNING!** Using the cleaner without the appropriate filters may cause damage to the vacuum cleaner and will invalidate your warranty.
- ✓ Wear protective clothing and gloves.
- \* **DO NOT** place attachments close to your face (especially eyes, ears, etc). **DO NOT** point the hose end at other persons or animals.
- ▲ **DANGER! DO NOT** vacuum hot or glowing ash, cigarette ends, flammable, explosive, corrosive or other dangerous substances.
- \* **DO NOT** leave machine running unattended. Turn power supply OFF, and **DO NOT** leave the vicinity until motor has come to a complete stop.
- \* **DO NOT** operate the cleaner while under the influence of drugs, alcohol or impairing medication, or if you are tired.
- \* **DO NOT** use the cleaner in the rain or in very damp conditions.
- \* **DO NOT** use the cleaner for a task it is not designed to perform.  
When not in use, store the cleaner in a safe, dry, childproof location.



**NOTE:** This appliance can be used by children aged from 8 years and above and persons with reduced physical, sensory or mental capabilities or lack of experience and knowledge if they have been given supervision or instruction concerning use of the appliance in a safe way and understand the hazards involved. Children shall not play with the appliance. Cleaning and user maintenance shall not be made by children without supervision.

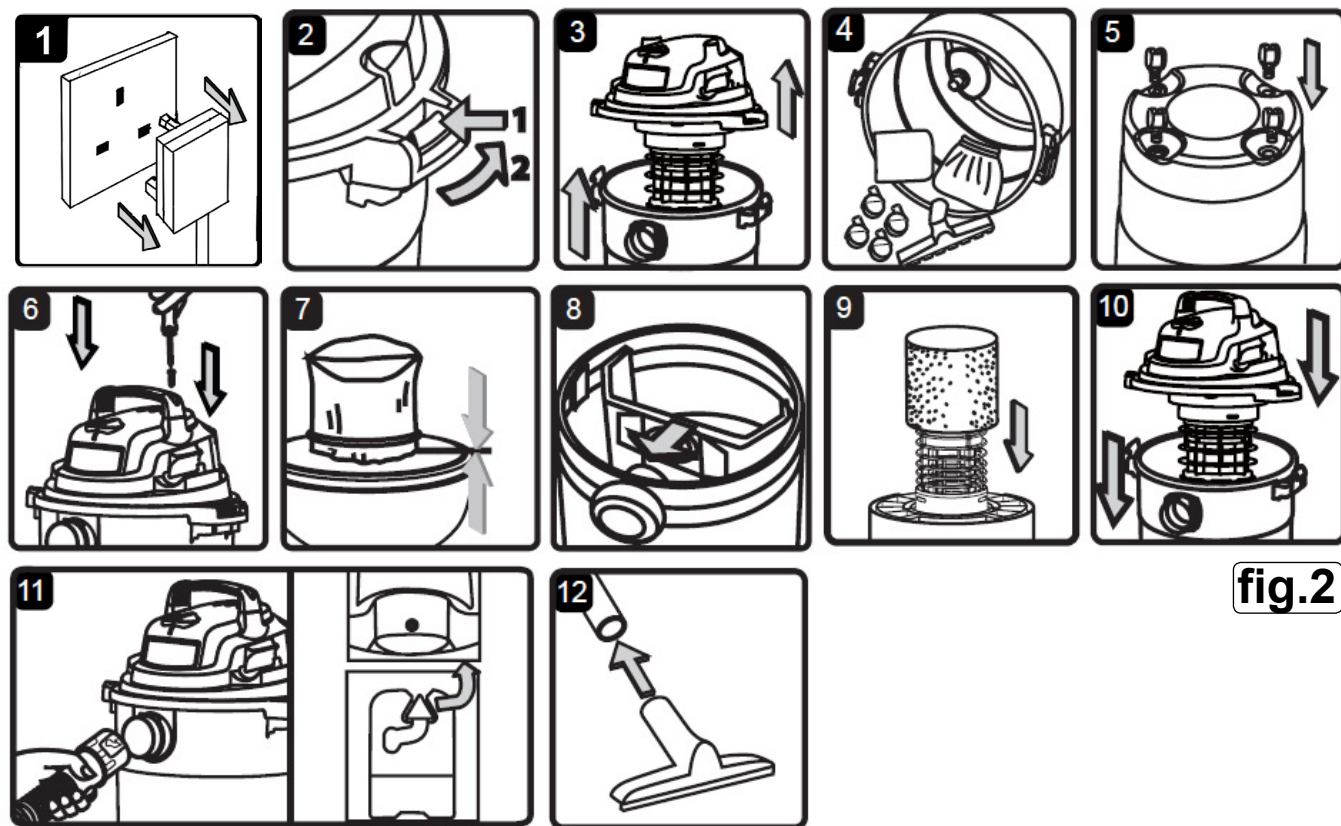
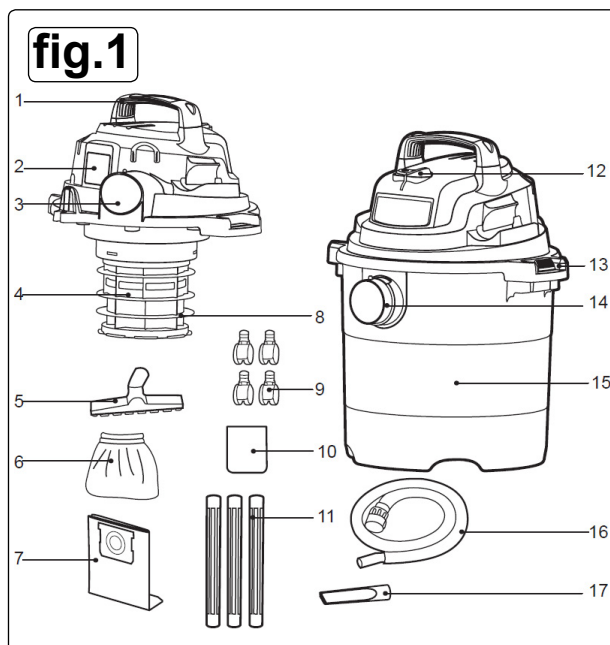
## 2. INTRODUCTION

High powered, lightweight unit with blower facility. Constructed from stainless steel, the drum unit is mounted on four castor wheels. Tool Storage points on head and base. Supplied with 4mtr cable, 3-pin plug and accessory tool kit. Including three rigid extension tubes, wet-use foam filter, cloth filter and dust bag.

## 3. SPECIFICATION

**Model No:** .....PC195SD  
**Motor Power:** ..... 1250W  
**Supply:** ..... 230V-50Hz  
**Maximum Vacuum Pressure:** ..... 172mbar  
**Air Flow:** ..... 126m<sup>3</sup>/hr  
**Drum Size:** .....20ltr  
**Weight:** ..... 5.54kg  
**Vac Accessories Ø:** ..... 35mm  
**Replacement Dry Reuseable Filter:** ..... PC195SD.CF  
**Replacement Foam Filters (Pack of 10):** ..... PC200FF10  
**Optional Dust Bags (Pack of 5):** ..... PC200PB5  
**Cartridge Filter available:** ..... PC200CFL

Item	Description
1	Handle
2	Top section
3	Blower connection
4	Filter basket
5	Floor nozzle
6	Dry reusable filter
7	Household collector bag
8	Safety float valve
9	Casters (x4)
10	Foam sleeve/wet filter
11	Extension wands (x3)
12	Switch
13	Clasp (x2)
14	Vacuum hose connector
15	Tank
16	Hose set
17	Crevice tool



## 4. ASSEMBLY

- WARNING! DO NOT** plug in the mains cable. Make sure the plug is disconnected before assembling the vacuum.
- 4.1. Undo the clasps (Fig.2.2).
- 4.2. Lift the top section off the container (Fig.2.3).
- 4.3. Remove the contents from inside the container (Fig.2.4).
- 4.4. Turn the container upside down and insert the four casters. Check that they are mounted correctly (Fig.2.5).

- 4.5. Insert the handle into the slots on the power head and press into place (Fig.2.6).
- 4.6. For dry vacuuming, install the supplied dust filter and dust bag (Fig.2.7, Fig.2.8).
- 4.7. For wet vacuuming, install the supplied foam filter (Fig.2.9).
- 4.8. Place the top section back on the container (Fig.2.10).
- 4.9. Align the top section with the clasps, and snap into place by applying pressure until clasps latch into place (Fig.2.10).
- 4.10. Insert the large end of the hose into the front inlet of the container, and lock it by pushing and twisting (Fig.2.11).
- 4.11. Choose the desired accessories and push onto the suction tube (Fig.2.12).

## 5. DRY VACUUMING

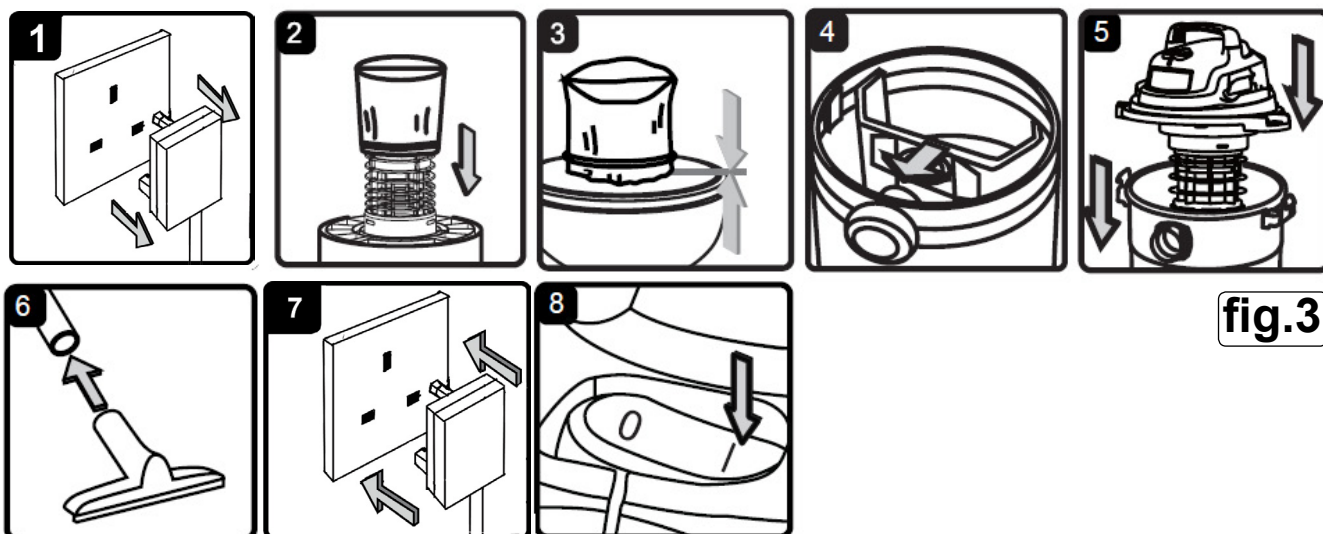


fig.3

- ✗ **DO NOT** vacuum in areas with flammable gases, vapours or explosive dusts in the air. Flammable gases include, but are not limited to: lighter fluid, solvent type cleaners, oil based paints, gasoline, alcohol or aerosol sprays. Explosive dusts include, but are not limited to: coal, magnesium, grain or gun powder. To reduce the risk of health hazards from vapours or dust, **DO NOT** vacuum toxic materials.
  - ☐ **WARNING!** Be sure to read, understand and apply Section 1, entitled 'Safety'.  
**Note:** The use of an incorrect dust bag will void the warranty.
- 5.1. Verify that the mains cable is disconnected. (Fig.3.1).
  - 5.2. In order to prepare your vacuum for dry vacuuming, verify that the dust filter is clean and dry. Place the dust filter over the filter basket and centre it. Push down until the mounting ring of the dust filter is positioned against the ribs of the top section (Fig.3.2). Verify that the dust filter completely covers the filter basket. Also verify that all edges of the dust filter are secure under the mounting ring (Fig.3.3).  
Verify that the dust bag is installed to the inside of the tank (Fig.3.4).  
Place the top section back on the container, and secure it in place using the clasps (Fig.3.5).  
Insert the larger end of the flexible hose into the front inlet on the tank, and lock in place. Push the required attachment onto the free end of the hose or extension (Fig.3.6).  
Plug the mains cable (Fig.3.7).
  - 5.8. Turn the motor on by flipping the switch to the "I" position (Fig.3.8).
  - 5.9. Once you have finished vacuuming, flip the switch to the "O" position and unplug the mains cable.
- Note: **DO NOT** use the dust filter for wet or sharp materials.  
**DO NOT** use the dust bag for liquid vacuuming.

## 6. WET VACUUMING

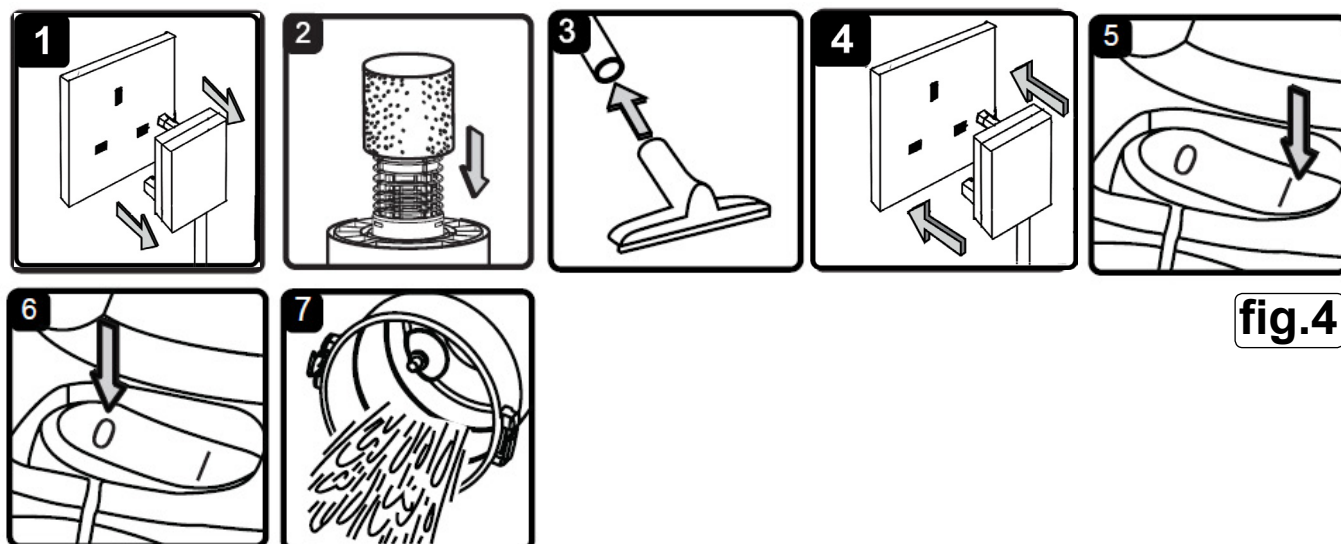


fig.4

- ❑ **WARNING!** Be sure to read, understand and apply section 1 entitled 'Safety'. **DO NOT** vacuum hazardous substances.  
**Note: DO NOT** use the dust filter for wet materials.

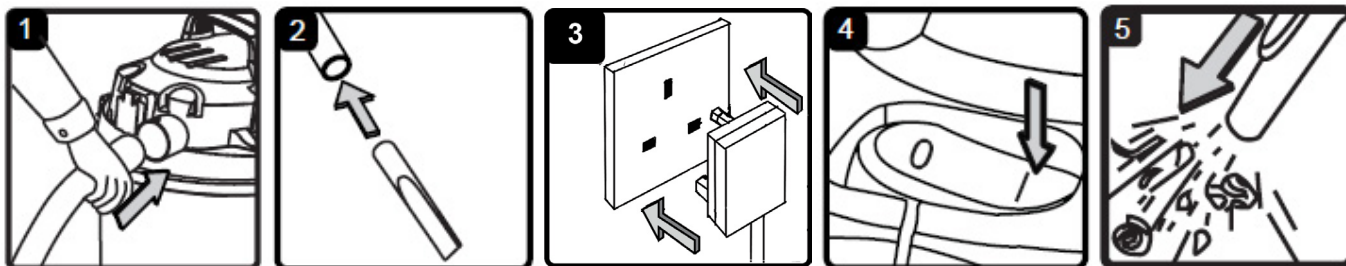
- 6.1. Check that the mains cable is disconnected. (Fig.4.1).
- 6.2. Remove the dust filter and dust bag, and install a foam filter over the filter basket, and place the top section back on the container (Fig.4.2).
- 6.3. Fit the desired nozzle onto the vacuum hose (Fig.4.3).
- 6.4. Verify that the switch is in the 'O' position before plugging in the mains cable (Fig.4.4).
- 6.5. Turn the motor on by flipping the switch to the "I" position (Fig.4.5).
- 6.6. After use, flip the switch to the "O" position and unplug the power cord (Fig.4.6), then empty and dry the container (Fig.4.7).

**Remember!** The foam filter must be removed after wet vacuuming, and a dust filter must be installed before dry vacuuming again.

**IMPORTANT!** When vacuuming large quantities of liquids, **DO NOT** immerse the nozzle completely in the liquid; leave a gap at the tip of the nozzle opening to allow air inflow. The machine is fitted with a float valve that stops the suction action when the container reaches its maximum capacity. You will notice an increase in motor speed. When this happens, turn off the machine, disconnect from the mains, and drain the liquid into a suitable receptacle or drain. To continue vacuuming, refill the container with the container. After wet vacuuming, turn the machine off and remove the plug. Empty the container, clean and dry the inside and outside before storage.

## 7. BLOWER OPERATION

fig.5



- ❑ **WARNING!** Always wear safety goggles before using the blower. Keep bystanders away from blowing debris and wear a dust mask if blowing creates dust that might be inhaled.
- 7.1. Insert the large end of the hose into the blower connection in the top of the motor housing (Fig.5.1).
  - 7.2. Fit the desired nozzle to the vacuum hose (Fig.5.2).
  - 7.3. Ensure the power switch is turned off and plug in (Fig.5.3).
  - 7.4. Turn the motor on by flipping the switch to the "I" position (Fig.5.4).
  - 7.5. The unit will now blow through the vacuum hose and can be used to clear obstructions within the hose (Fig.5.5).
- ❑ **WARNING!** If the hose is still blocked after a few seconds, turn off the unit and clear the hose manually.

## 8. MAINTENANCE

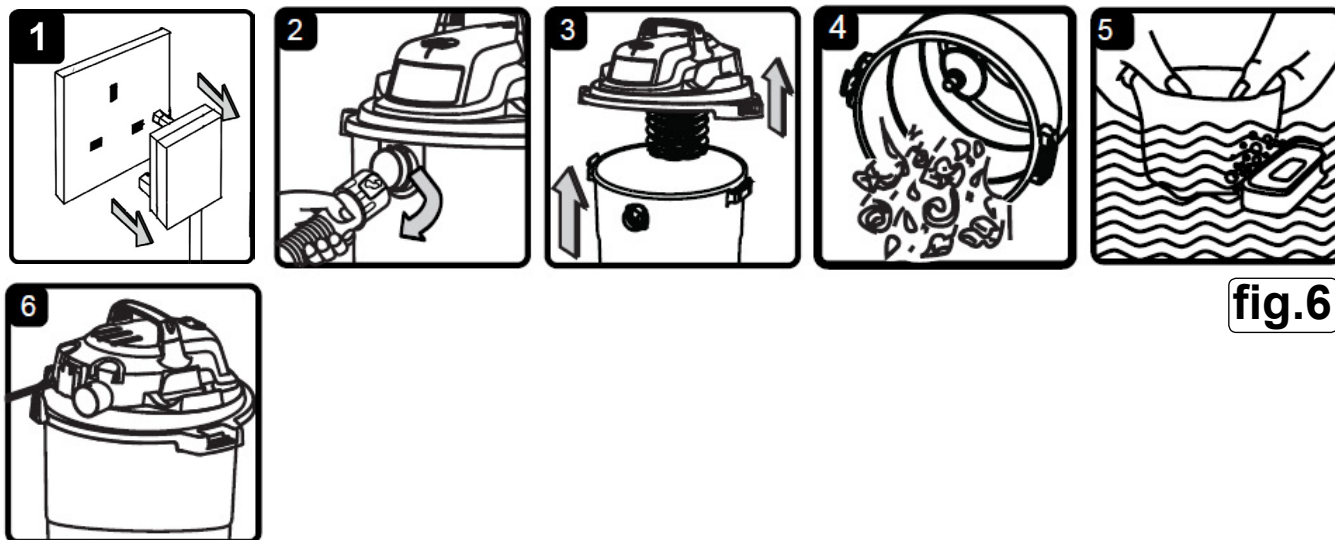


fig.6

- 8.1. Verify that the power cable is disconnected (Fig.6.1).
- 8.2. Disconnect the hose from the container (Fig.6.2).
- 8.3. Undo the clasps and remove the top section from the container (Fig.6.3).
- 8.4. Clear all dirt or debris from the container and hose (Fig.6.4).
- 8.5. Clean the foam filter or dust filter by washing it with a mild soapy solution (Fig.6.5).
- 8.6. Check the hoses, attachments, and power cord to verify that they have not been damaged (Fig.6.6).

**IMPORTANT!** Change the dust filter regularly.

**IMPORTANT!** If the machine is used without the dust filter, the motor will burn out and the warranty will be voided. Always keep spare filters on hand.



## 9. TROUBLESHOOTING

Problem	Possible Causes	Corrective Action
Vacuum will not operate.	No power supply	Check power supply: cable, circuit breakers, fuses
	Faulty power cable	Unplug and check the power cable. If damaged, have it repaired by a professional.
	Container full of liquid.	Empty container.
Dust comes from the motor cover.	The dust filter is missing or damaged.	Attach or replace dust filter.
Reduced efficiency and motor speed/vibration.	Blockage in the nozzle, hose, or the vacuum inlets, or the dust filter is blocked by fine dust.	Check nozzle, hose and container inlets for blockage. Take off the dust filter and wash clean it. Reuse it when it is dry. If necessary use a new dust filter.



### ENVIRONMENT PROTECTION

Recycle unwanted materials instead of disposing of them as waste. All tools, accessories and packaging should be sorted, taken to a recycling centre and disposed of in a manner which is compatible with the environment. When the product becomes completely unserviceable and requires disposal, drain any fluids (if applicable) into approved containers and dispose of the product and fluids according to local regulations.



### WEEE REGULATIONS

Dispose of this product at the end of its working life in compliance with the EU Directive on Waste Electrical and Electronic Equipment (WEEE). When the product is no longer required, it must be disposed of in an environmentally protective way. Contact your local solid waste authority for recycling information.

**Note:** It is our policy to continually improve products and as such we reserve the right to alter data, specifications and component parts without prior notice.

**Important:** No Liability is accepted for incorrect use of this product.

**Warranty:** Guarantee is 12 months from purchase date, proof of which is required for any claim.

Sealey Group, Kempson Way, Suffolk Business Park, Bury St Edmunds, Suffolk. IP32 7AR



01284 757500



01284 703534



sales@sealey.co.uk



www.sealey.co.uk