

// NATIONAL MACHINERY //

Instructions For: 12V CORDLESS POWER TOOL Model No: **NA1298**

Thank you for purchasing a National Machinery product. Manufactured to a high standard this product will, if used according to these instructions and properly maintained, give you years of trouble free performance.

IMPORTANT: BEFORE USING THE NA1298 PLEASE READ THESE INSTRUCTIONS CAREFULLY. NOTE THE SAFE OPERATIONAL REQUIREMENTS, WARNINGS AND CAUTIONS. USE THIS PRODUCT CORRECTLY, AND WITH CARE FOR THE PURPOSE FOR WHICH IT IS INTENDED. FAILURE TO DO SO MAY CAUSE DAMAGE, OR PERSONAL INJURY, AND WILL INVALIDATE THE WARRANTY.

1. SAFETY INSTRUCTIONS

1.1. GENERAL SAFETY

- 3 Disconnect the drill from the battery unit before changing accessories, servicing or performing any maintenance.
- 3 Maintain the drill and batteries in good condition. Check moving parts alignment on a regular basis.
- 3 Replace or repair damaged parts. *Use an authorised service agent and recommended parts only. Non authorised parts may be dangerous and will invalidate the warranty.*
- 3 Ensure the drill is switched off before installing the battery pack.
- 3 Keep the drill and charger clean for best and safest performance.
- 3 Remove ill fitting clothing. Remove ties, watches, rings, and other loose jewellery, and contain long hair.
- 3 Use in adequate working area for its function. Keep area clean, tidy and free from unrelated materials. Ensure there is adequate lighting.
- 3 Evaluate your working area before using the drill i.e. ceiling, floors and enclosures may contain electrical items or water piping.
- 3 Ensure battery pack is correctly inserted into the drill handle and snapped in place before attempting to switch drill on.
- 3 Secure non-stable work piece with a clamp, vice or other adequate holding device.
- 3 Avoid unintentional starting.
- 3 Wear approved safety eye protection (standard spectacles are not adequate).
- 3 Maintain correct balance and footing. Ensure the floor is not slippery and wear non-skid shoes.
- 3 Be aware that this drill does not need to be plugged into the mains power.
- 3 Keep chuck direction switch in the locked position until the drill is required for use.
- 3 Keep children and unauthorised persons away from the working area.
- 7 DO NOT use the drill where there are flammable liquids, solids or gases such as paint solvents, etc.
- 7 DO NOT allow children to operate the drill.
- 7 DO NOT operate the drill if any parts are missing as this may cause failure or possible personal injury.
- 7 DO NOT hold unsecured work in your hand.
- 7 DO NOT leave the drill operating whilst unattended.
- 7 DO NOT carry the tool with your finger on the power switch. Keep chuck direction switch in the locked position.
- 7 DO NOT force the drill to achieve a task it was not designed to perform.
- 7 DO NOT operate the drill when you are tired, under the influence of alcohol, drugs or intoxicating medication.
- 7 DO NOT get the drill or battery charger wet or use in damp or wet locations.
- 3 Keep drill and charger in their case and store in a safe, dry, childproof area where the temperature will not exceed 104°F (40°C).



1.2. BATTERY SAFETY INSTRUCTIONS.

- p **WARNING!** Battery contains nickel-cadmium which is dangerous and must be handled with care to avoid damage, fire, corrosion or personal injury.
- 3 Charge battery prior to its first use. The battery pack will have been shipped in a low charge state.
- 3 Use the provided charger only to charge the drill battery.
- 7 DO NOT charge battery when room temperature is below 50°F (10°C) or above 104°F (40°C).
- 7 DO NOT attempt recharging the battery by means of an engine generator or a DC power source.
- 7 DO NOT short-circuit the battery by touching both terminals with a metal object, or your fingers etc.
- 7 DO NOT store the battery (and drill) in locations where the temperature may exceed 104°F (40°C) such as outside sheds, above heaters, or metal buildings in summer.
- p **WARNING!** dispose of spent batteries correctly as they contain nickel-cadmium. **DANGER!** DO NOT attempt to disassemble the battery pack. For safety and environmental reasons DO NOT discard in domestic waste, or by burning. ONLY discard or recycle according to local waste authority regulations.
- p **WARNING!** DO NOT allow a leaking battery to contact your person. If you come into contact with battery liquid take the following immediate action:
 - p a) **Skin contact:** Wash immediately with soap and water, then wash flesh in either lemon juice or vinegar.
 - p b) **Eye contact:** Wash with a strong solution of boric acid, and seek immediate medical attention.

1.3. ELECTRICAL SAFETY.

REGARDING DIRECT MAINS POWER USE WITH THE CHARGING BASE AND TRANSFORMER PLUG ONLY .

p **WARNING!** It is the user's responsibility to read, understand and comply with the following electrical instructions: You must ensure the risk of electric shock is minimised by the installation of appropriate safety devices. An RCCB (Residual Current Circuit Breaker) should be incorporated in the main distribution board. We also recommend that an RCD **You must** also read and understand the following instructions concerning electrical safety.

- 1.3.1. **The Electricity At Work Act 1989 requires all portable electrical appliances, if used on a business premises, to be tested by a qualified Electrician at least once a year by using a Portable Appliance Tester (PAT).**
- 1.3.2. **The Health & Safety at Work Act 1974 makes owners of electrical appliances responsible for the safe condition of the appliance, and the safety of the appliance operator. If in any doubt about electrical safety, contact a qualified electrician.**
- 1.3.3. **You must ensure you:**
 - 3 Inspect the transformer plug, wire, adaptor, and the charger base for wear and damage to ensure items are safe before connecting to the mains power supply. If worn or damaged DO NOT use, immediately replace, or contact a qualified Electrician
 - 3 Check cables are always protected against short circuit and overload.
 - 3 Important: Check the voltage marked on the transformer plug is the same as the electrical power supply to be used.
 - 3 Uncoiled the power cable between the transformer and the charger before use.

- 7 DO NOT pull or carry the charger by the transformer power lead, or pull the transformer plug from the mains socket by the power lead.
- 7 DO NOT use any other type of transformer with the charger base.
- 7 DO NOT place the power connector into any area of the charger base except correct plug in location, (beneath green power light bulb).
- 7 DO NOT try to open or dis-assemble the transformer plug or charger base.
- 7 DO NOT use the transformer plug to power any other electrical item.
- 7 DO NOT use and extension lead between the mains and the battery charger transformer plug.
- 7 DO NOT get the transformer wet, or use in wet, damp conditions, (for indoor use only).
- p **WARNING!** EVER substitute the transformer plug for a standard 13Amp 3 pin plug, or any other type of plug.

1.4. BATTERY CHARGER BASE SAFETY INSTRUCTIONS.

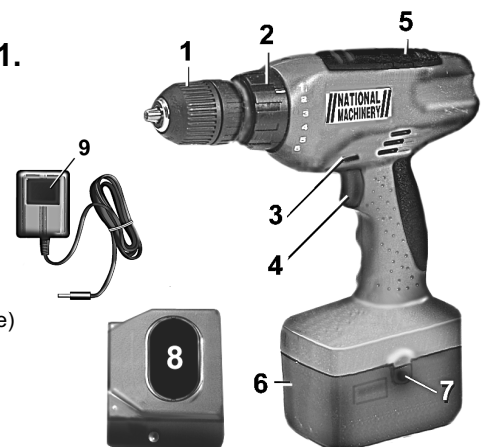
- p **WARNING!** DO NOT attempt to charge any battery other than that supplied for the drill. Other types of batteries may explode!
- 3 All mains electrical supply safety features must be followed as described in 1.3. above.
- 3 Disconnect the transformer plug from the charger and the mains power supply when not in use.
- 7 DO NOT expose the charger to damp or wet conditions. The charger is for indoor use only.
- 7 DO NOT pull or carry the charger base by the transformer power lead.
- 7 DO NOT operate the charger if it has been dropped, or has received a sharp knock, or is damaged. Contact an authorised service agent.
- 7 DO NOT dismantle the charger as this may cause damage or personal injury and will invalidate your warranty.
- 7 DO NOT insert foreign objects or material into the hole reserved for the battery.
- 7 DO NOT force the battery to fit into the charger. The battery will only fit one way to ensure the polarities are correctly aligned.
- 7 DO NOT recharge a second battery immediately after charging a battery. Consecutive charging will overheat the charger. Allow the unit to cool for 15 minutes before charging the next battery.
- 7 DO NOT attempt to connect two chargers together.
- 3 Store the charger in the same manner as battery in 1.2.

2. SPECIFICATIONS

- Chuck size10mm
- Motor12V
- No load speed575RPM
- Max torque4.3Nm (38 lb/ft)
- Full charge time3 - 5 hours
- HSS Drill Bits:2, 3, 4, 5, 6mm
- Bits:Slotted 5mm, 6mm,
.....Phillips #1 and #2.
Double head Phillips #1 x slotted #5,
Double head Phillips #2 x slotted #7.
- Sockets:5, 6, 7, 8, 9, 10mm

- 1. Keyless chuck
- 2. 6 torque settings
- 3. Lock, reverse and forward switch
- 4. Electronic variable speed switch
- 5. Double bits holder
- 6. Battery power pack
- 7. Battery release button (one each side)
- 8. Charging base
- 9. Mains transformer

fig 1.



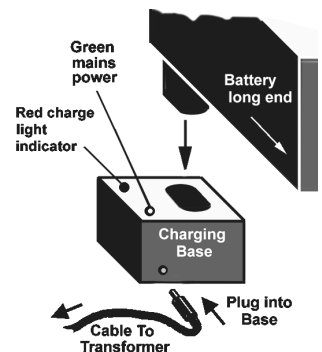
3. OPERATING INSTRUCTIONS

Note: When new, the battery will have been shipped in a low charge mode. It will take longer to charge the battery initially (about 8 hours) and several subsequent charges may also take a little longer than when the battery reaches its optimum performance.

3.1. Charging the battery pack.

- 3.1.1. To remove the battery pack from the drill, depress the two side clips (fig 1 item 7). Do not touch the metal terminals.
- 3.1.2. Place drill carefully back into its carrying case and remove the battery charger.
- 3.1.3. Connect mains transformer to the charging base (fig 2), and stand the base on a safe flat surface. Plug the transformer into mains power and switch on. The green power light will come on.
- 3.1.4. The battery is designed to fit into the charger one way only. This is to ensure that the positive + and negative - polarities correspond. Align the + & - polarity marks on the base of the battery with the + & - marks on the charger, insert the battery and press very slightly downward to seat the battery firmly into the charging base as in figure 2.

fig 2.



WARNING! DO NOT try to force battery into the base with crossed polarities.

- 3.1.5. The red charge light will come on when the battery is inserted into the charger, and will remain on until the battery is removed. Under normal conditions the battery will take 3 - 5 hours to fully charge from flat. NOTE: It will take about 8 hours for the initial charge (see chapter header note).
- 3.1.6. Remove the battery by holding the charger and the red light will go out. Switch off and unplug the transformer from the mains. Push the battery into the drill base until it snaps into place. The drill is now ready for use.
- 3.1.7. Place the transformer and charging base back into their carry case.

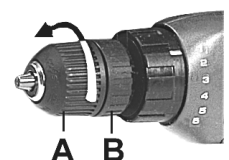
Note: If you try to charge a battery that has been removed from a recently used drill the red charge light may not come on. In such a case allow the battery to cool for a time and try again.

3.2. Drill instructions. (Ensure you have read and understood and comply with all the safety instructions)

WARNING! always wear approved safety glasses when drilling.

- 3.2.1. Open the chuck by holding the rear chuck (fig 3 B) and turning the front chuck collar (fig 3 A see direction arrow on chuck).
- 3.2.2. Insert the required drill bit into the full length of the chuck and tighten.
- 3.2.3. Check the drill to ensure the direction switch (fig 1 item 3) is in the mid (lock) position.
- 3.2.4. Insert the battery pack into the base of the drill and snap into place.
- 3.2.5. The speed of the drill is controlled by the electronic variable speed switch (fig 1 item 4). Press the switch gently for a slow speed progressively increasing the pressure on the switch to produce a corresponding higher speed (try before using on job).

fig 3.



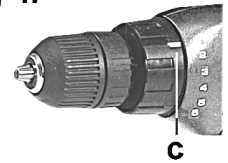
3.2.6. Torque setting (fig 4. C)

The torque is the amount of resistance applied when you use the drill as a screw driver or when tightening nuts and bolts. Torque setting 1 is the lightest setting and will apply the least resistance to the final turns of a screw, etc. The torque becomes progressively more powerful as you increase the number up to a maximum of torque 6.

The combination of variable speed and changeable torque will assist you perform drilling tasks with maximum efficiency.

- | | | |
|----------------------------|------------------------------|--------------------------|
| Suggested torque settings: | 1. For small screws | 4. Screws into hard wood |
| | 2. Screws into soft material | 5. Regular drilling |
| | 3. Screw into hard material | 6. Heavy drilling |

fig 4.



3.2.7. To drill holes

Lock a pilot drill (smaller size drill than the finished hole size) into the chuck.

Check to confirm the turning direction is correct (change by switching fig 1 item 3).

DO NOT change direction whilst the drill is running.

Drill a pilot hole in the middle of the spot where the final hole is to be drilled.

Insert the final sized drill bit. Hold drill firmly and place the drill bit at the entrance of the pilot hole and depress the trigger as in 3.2.5.

If the drill becomes stuck, release the switch and place the chuck in reverse by pressing the direction switch to the other side (item 3). If this does not work, gently work the drill bit free. If the chuck stops turning, check the torque setting.

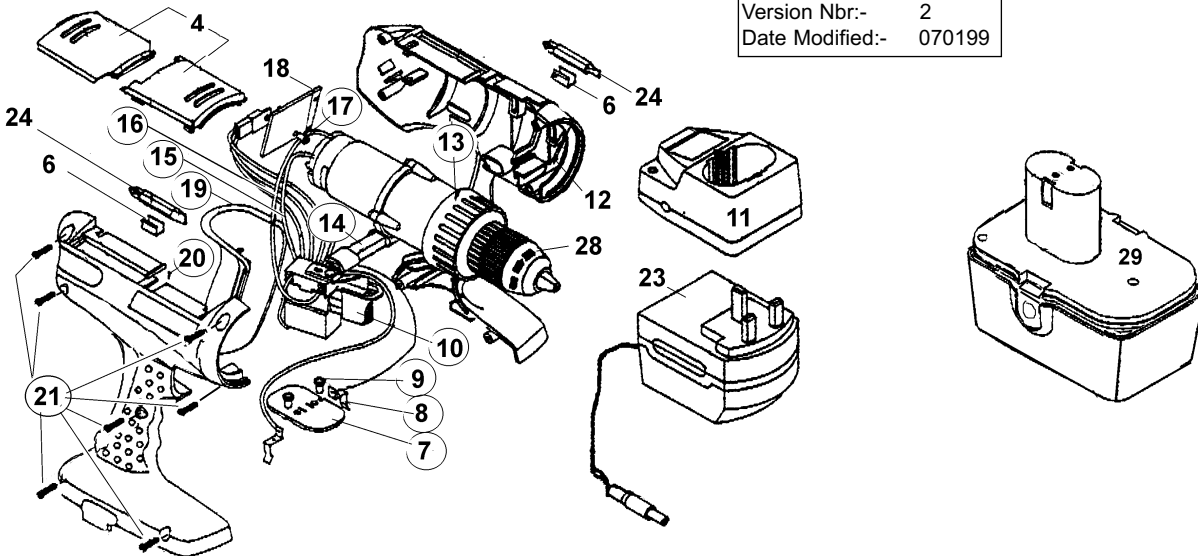
3.2.8. As a screw or bolt driver.

Lock appropriate tool bit in the chuck, set appropriate torque and proceed with the task. To remove screws, bolts, etc, switch the drill in reverse.

When you have finished working, remove the bit from the chuck, clean drill and bit and store in the carry case.

4. PARTS LIST

Original Date:- 010398
 Issue Date:-
 Version Nbr:- 2
 Date Modified:- 070199



ITEM	PART No	DESCRIPTION	ITEM	PART No	DESCRIPTION	ITEM	PART No	DESCRIPTION
4	NA1298/04	Cover, front top	12	NA1298/12	Holder, handle cover	24	NA1298/24	Bit, screwdriver
6	NA1298/06	Holder, metal bit	13	NA1298/13	motor 12v with gearbox	28	NA1298/29	Chuck, 3/8" keyless
7	NA1298/07	Holder, connector plate	14	NA1298/14	Switch, reverse	29	NA1298/BP	Battery Pack
8	NA1298/08	Plate, contact	15	NA1298/15	Wire			
9	NA1298/09	Rivet	16	NA1298/16	Wire			
10	NA1298/10	Switch, variable speed	17	NA1298/17	Rivet			
11	NA1298/11	Charging base	18	NA1298/18	Heat sink			
			19	NA1298/19	Support, handle			
			20	NA1298/20	Handle, right			
			21	NA1298/21	Screw, self tapping			
			23	NA1298/23	Mains transformer			

Declaration of Conformity We, the sole importer into the UK, declare that the product listed below is in conformity with the following EEC standards and directives

**Cordless Drill Model NA1298
 Charging Unit & transformer plug**

73.23/EEC
 Low Voltage Directive (S.I. 1994/3260)
 89/336/EEC EMC Directive



The construction file for this product is held by the Manufacturer

[Signature]

Date 1st March 1998

For National Machinery Ltd.



NOTE: It is our policy to continually improve products and as such we reserve the right to alter data, specifications and component parts without prior notice.



WARRANTY: GUARANTEE IS 12 MONTHS PARTS AND LABOUR FROM PURCHASE DATE.
 PROOF OF PURCHASE WILL BE REQUIRED FOR ANY CLAIM.

IMPORTANT AMENDMENT TO INSTRUCTION MANUAL FOR MODEL NA1298

3. OPERATING INSTRUCTIONS

HEADER NOTE SHOULD READ:

When new, the battery will have been shipped in a low charge mode. It will take longer to charge the battery initially, and several subsequent charges may also take longer than when the battery reaches its optimum performance.

ITEMS SHOULD READ AS FOLLOWS:

- 3.1.6. The red indicator (battery charge) light will come on when the battery is inserted into the charger and will remain on until the battery is removed from the charger. Under normal conditions the battery will take up to 5 hours to fully charge from flat, *(subject to chapter header note)*.
- 3.1.7. Unplug the charger from the mains power and remove the battery ready for use with the drill.