

Thank you for purchasing a Sealey Product. Manufactured to a high standard this product will, if used according to these instructions and properly maintained, give you years of trouble free performance.

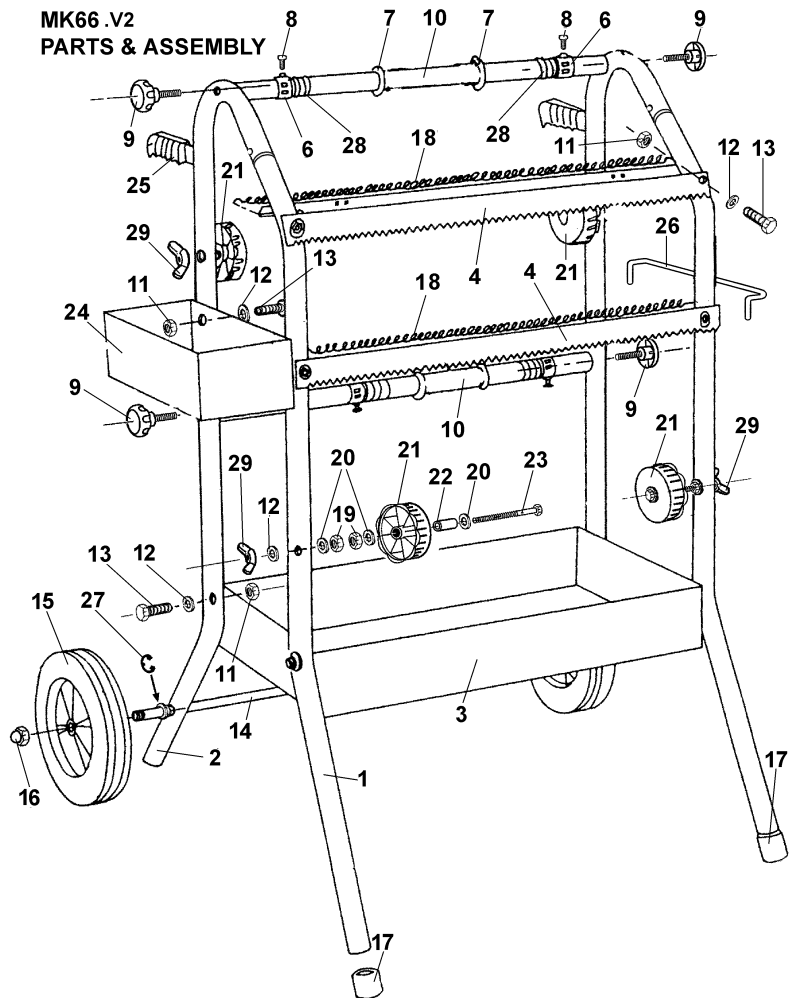
! IMPORTANT: PLEASE READ THESE INSTRUCTIONS CAREFULLY. NOTE THE SAFE OPERATIONAL REQUIREMENTS, WARNINGS AND CAUTIONS. USE THIS PRODUCT CORRECTLY AND WITH CARE FOR THE PURPOSE FOR WHICH IT IS INTENDED. FAILURE TO DO SO MAY CAUSE DAMAGE OR PERSONAL INJURY AND WILL INVALIDATE THE WARRANTY. PLEASE KEEP INSTRUCTIONS SAFE FOR FUTURE USE.

1. SAFETY INSTRUCTIONS

- ✓ Ensure the dispenser is on a reasonably flat, level floor before loading.
- ✓ Be aware that the paper cutting blades are sharp, handle with care.
- x DO NOT use the dispenser for any purpose other than that for which it is designed.

2. ASSEMBLY

- 2.1 To assemble the side frames compress the silver latch button at the top of the front leg 1 and insert the tube into the back leg tube 2 until they snap together. (See A in main drawing.)
- 2.2 Onto each end of the two paper bars 10 slide a large retaining washer 7 followed by a retaining spring 28 followed by a plastic retaining ring 6. Insert a screw 8 into the threaded block on each retaining ring.
- 2.3 Attach the side frames to each end of the paper bars as shown in the main drawing using the four black knobs 9.
- 2.4 Fit the bottom tray between the side frames and bolt it to each leg using a bolt 13, a washer 12, and a nut 11.
- 2.5 Attach the upper paper blade 4 to the front of the frame using two bolts 13, two washers 12, and two nuts 11.
- 2.6 Attach the lower paper cutter 5 to the front of the frame using two bolts 13, two washers 12, and two nuts 11.
- 2.7 Attach a paper spring 18 to the back edge of each paper cutter. Hook one end of the spring to the notched back corner of the metalwork and stretch it across and hook it to the other back corner. Take care to avoid the paper cutter teeth when doing this.
- 2.8 To assemble the four tape reels as shown in fig.1 take a long bolt 23 and drop a washer 20 onto it followed by a metal hub 22. Slide a reel 21 over the bolt and onto the hub ensuring that it is the right way round. Retain the assembly using another washer followed by a nut. After the nut has been tightened the reel should still run freely on the hub. Attach another nut to the bolt and insert the bolt through the frame in one of the four places indicated on the main drawing. Retain the assembly in place using a wingnut 29 and a washer 12.
- 2.9 Attach the top tray 24 to the side of one of the frames using two bolts 13, two washers 12, and two nuts 11. The nuts and washers should be on the inside of the tray.
- 2.10 Attach the hanger 26 to the side of the opposite frame at the same level as the top tray. Insert the ends of the hanger into the holes in the side of the frame and tip the hanger forwards so that the first bend in either end of the hanger is inside each frame tube.
- 2.11 The MK66 has a solid rod axle 15 with grooves at either end to accept a snap ring 27. Clip a snap ring into one of the grooves and slide the axle through the holes near the bottom of each rear leg and retain it with the other snap ring.
- 2.12 Slide a wheel 15 onto each end of the axle and retain them by screwing a dome nut 16 onto the threaded ends of the axle.



ITEM	PART NO	DESCRIPTION
1	MK66.V2-01	FRONT FRAME
2	MK66.V2-01A	REAR FRAME
3	MK66.V2-02	18" BOTTOM TRAY- 500mm
4	MK66.V2-03	18" 90 DEG. PAPER CUTTER
5	MK66.V2-04	18" 45 DEG. PAPER CUTTER
6	MK66.V2-05	PAPER HOLDING RING
7	MK66.V2-06	PAPER HOLDING WASHER
8	MK66.V2-07	HEX.HEAD SCREW (3/16x3/4")
9	MK66.V2-08	WING BOLT (3/8-16x1 1/2")
10	MK66.V2-09	PAPER BAR 18"
11	MK66.V2-10	NUT(1/4")
12	MK66.V2-11	WASHER(1/4")
13	MK66.V2-12	BOLT(1/4"-20)
14	MK66.V2-13	AXLE SHAFT 500mm 18"
15	MK66.V2-14	WHEEL
16	MK66.V2-15	AXLE NUT (3/8"C-CLIP)
17	MK66.V2-16	TIPPING FOOT
18	MK66.V2-17	CUTTER SPRING
19	MK66.V2-18	NUT(1/4")
20	MK66.V2-19	WASHER(1/4")
21	MK66.V2-20	TAPE REEL
22	MK66.V2-21	BUSHING FOR TAPE REEL
23	MK66.V2-22	TAPE REEL BOLT(1/4-20x3")
24	MK66.V2-23	SIDE TRAY
25	MK66.V2-24	HANDLE GRIP
26	MK66.V2-25	HANGER BAR
27	MK66.V2-26	AXLE WASHER
28	MK66.V2-27	SPRING,PAPER HOLDING RING
29	MK66.V2-28	WING NUT(1/4")

3. USING THE DISPENSERS

- 3.1 Remove either the upper or lower paper bar from the frame by unscrewing and removing the black knobs at either end.
 - 3.2 Loosen the screw in one of the black plastic retaining rings and remove the ring, spring and washer from the end of the bar. Remove the cardboard tube centre of the last roll from the bar.
 - 3.3 Slide the the paper bar through the centre of the new paper roll and refit the washer, spring and retainer to the end of the bar. Temporarily tighten the screw in the black retaining ring.
 - 3.4 To refit the loaded bar to the frame get a second person or persons to support the paper roll while the black knobs are fitted at either end of the bar. The paper should be coming off the top of the roll. Once loaded, check that the roll is centrally placed on the paper bar and make any necessary adjustments using the black retaining rings.
 - 3.5 Push a roll of masking tape onto each tape dispensing reel and spin it to make sure the tape is running true. Check that the tape dispensers are aligned with the ends of the paper roll as shown in fig.3. (The centre line of the tape should align with the edges of the paper roll.) The position of the tape dispensers can also be adjusted as shown in fig.2. To increase or decrease dimension 'X' loosen the wing nut 'Z' and roll nut 'Y' up or down the bolt as required. Retighten the wing nut.
 - 3.6 Pull about 450mm of paper from the roll and feed it between the paper spring and the back edge of the adjacent paper cutter.
 - 3.7 Pull tape from each dispenser in turn and stick it to the paper roll so that it is half on and half off the paper edges. Check the alignment of the tapes and make any further adjustments required to the positions of the tape dispensers.
 - 3.8 Slowly pull the paper from the roll and check that the tapes feed correctly onto the edges of the paper.
 - 3.9 Tear the paper off with an upward movement against the down facing teeth of the paper blade. Keep hands well away from the blade when doing this.
 - 3.10 Load the other paper bar as described above.
- NOTE. A fully loaded frame is quite heavy. Take care when moving it and always leave it in a stable position.

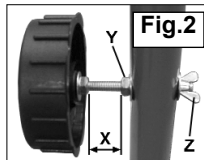
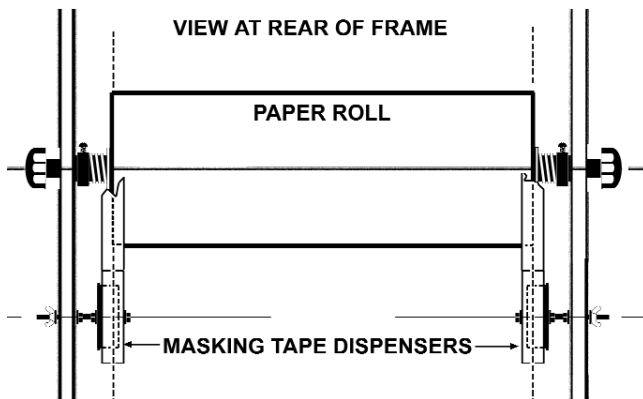


Fig.3



NOTE: It is our policy to continually improve products and as such we reserve the right to alter data, specifications and component parts without prior notice.

IMPORTANT: No liability is accepted for incorrect use of this product.

WARRANTY: Guarantee is 12 months from purchase date, proof of which will be required for any claim.

INFORMATION: For a copy of our catalogue and latest promotions call us on 01284 757525 and leave your full name, address and postcode.

	Sole UK Distributor Sealey Group, Bury St. Edmunds, Suffolk.	01284 757500	www.sealey.co.uk sales@sealey.co.uk
		01284 703534	