

Thank you for purchasing a Sealey product. Manufactured to a high standard this product will, if used according to these instructions and properly maintained, give you years of trouble free performance.



**IMPORTANT: PLEASE READ THESE INSTRUCTIONS CAREFULLY. NOTE THE SAFE OPERATIONAL REQUIREMENTS, WARNINGS AND CAUTIONS. USE THE PRODUCT CORRECTLY AND WITH CARE FOR THE PURPOSE FOR WHICH IT IS INTENDED. FAILURE TO DO SO MAY CAUSE DAMAGE AND/OR PERSONAL INJURY AND WILL INVALIDATE THE WARRANTY. PLEASE KEEP INSTRUCTIONS SAFE FOR FUTURE USE.**

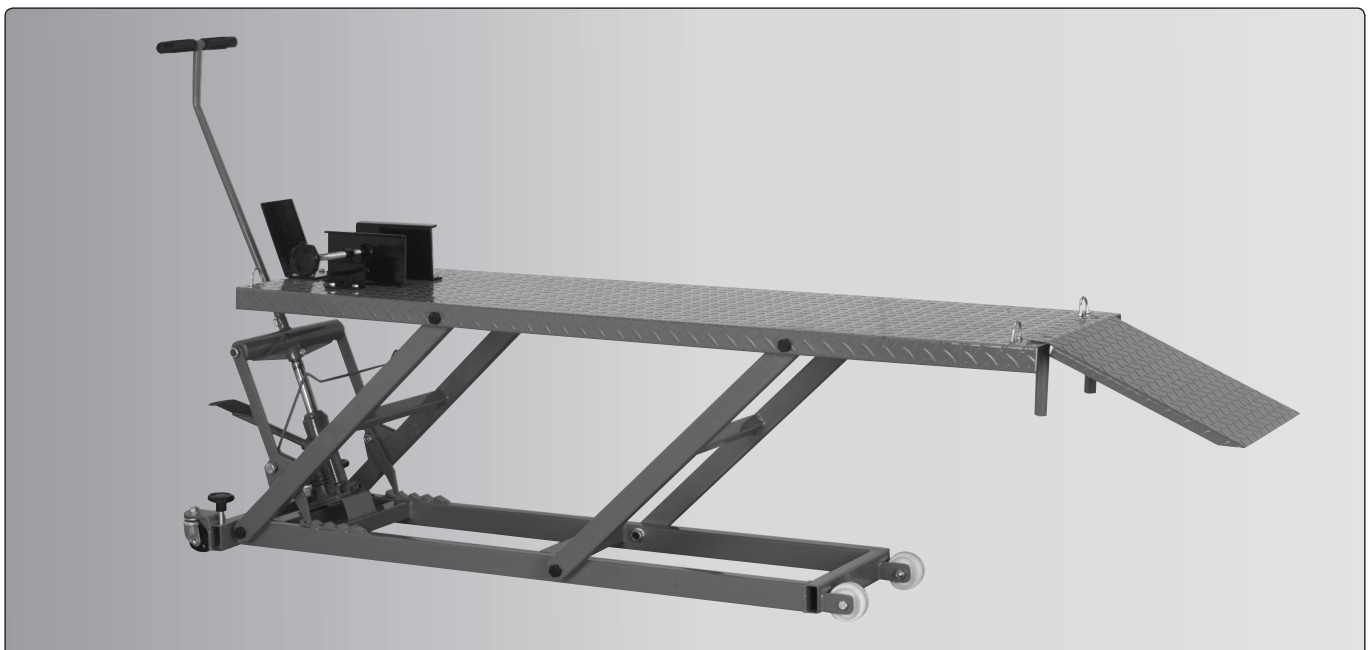
## 1. SAFETY INSTRUCTIONS

- ❑ **WARNING! THIS LIFT IS ONLY SUITABLE FOR MOTORCYCLES WHICH HAVE A CENTRE STAND.**
- ❑ **WARNING! Ensure the bike is adequately strapped onto the platform before operating.**
- ✓ Maintain the lift in good condition (use an authorised service agent).
- ✓ Replace or repair damaged parts. *Use genuine parts only. Unauthorised parts may be dangerous and will invalidate the warranty.*
- ✓ Use a qualified person to lubricate and maintain the lift. **DO NOT** use brake fluid to top up hydraulic unit.
- ✓ Locate the lift in a suitable work area, keep area clean and tidy and free from unrelated materials, and ensure that there is adequate lighting. Also ensure that the floor is level and strong enough (preferably concrete) to take the weight of the lift and the bike. **DO NOT** operate the lift on tarmac, as the surface may be unstable.
- ✓ Keep the lift clean for best and safest performance.
- ✓ The maximum bike weight is 450kg. **DO NOT** exceed this rated capacity.
- ✓ Remove ill fitting clothing. Remove ties, watches, rings and other loose jewellery, and contain long hair.
- ✓ Maintain correct balance and footing, do not overreach. Ensure the floor is not slippery and wear non-slip shoes.
- ✓ Ensure the bike is adequately secured to the lifting platform with appropriate straps.
- ✓ Before lifting check that there are no overhead obstructions.
- ✓ When platform has been raised to the working height ensure the locking bar is engaged to prevent accidental lowering.
- ✓ Keep children and unauthorised persons away from the work area.
- ✓ The lowering speed will vary according to the weight of the load and the amount by which the release pedal is depressed.
- ✗ **DO NOT** use the lift for a task it is not designed to perform.
- ✗ **DO NOT** use MC455 to lift persons.
- ✗ **DO NOT** operate the lift if damaged.
- ✗ **DO NOT** exceed the rated capacity of the lift.
- ✗ **DO NOT** operate the lift when you are tired or under the influence of alcohol, drugs or intoxicating medication.
- ✗ **DO NOT** allow untrained persons to operate the lift.
- ✗ **DO NOT** attempt to transport a load on the lift. The lift must only be used in a static position for raising and lowering loads.
- ✗ **DO NOT** make any modifications to the lift and **DO NOT** adjust or tamper with the safety valve.
- ✓ Before lowering the lift ensure that there are no obstructions underneath and that all persons are standing clear.
- ✓ Before storing in safe area, ensure all parts are clean and free of grease and oil. Store lift in the lowest position.

## 2. SPECIFICATION

Capacity . . . . .	450kg	Width. . . . .	500mm
Minimum Height . . . . .	150mm	Length. . . . .	2210mm
Maximum Height . . . . .	600mm	Maximum Load Length. . . . .	1820mm

Steel construction heavy-duty hydraulic pump and ram assembly. Fitted with platform safety locking device with four height settings of 600mm, 530mm, 440mm and 320mm to prevent accidental lowering. Supplied with full width loading ramp and adjustable front wheel clamp. Base frame fitted with transport wheels and lock-down bolts to prevent lift from moving during use. Suitable only for motorcycles with a centre stand.



### 3. ASSEMBLY

Unpack the lift and check contents with the parts list. Should there be any damaged or missing parts contact your supplier immediately.  
**WARNING!** Keep your hands away from moving parts.

#### 3.1. Assembly.

MC455 comes largely assembled, follow the diagram below to attach the front wheel mount, handle etc. Check all fixings to ensure none are loose. Check that the locking mechanism (13) operates freely, so as the table is raised, the lock drops down into the locking position.

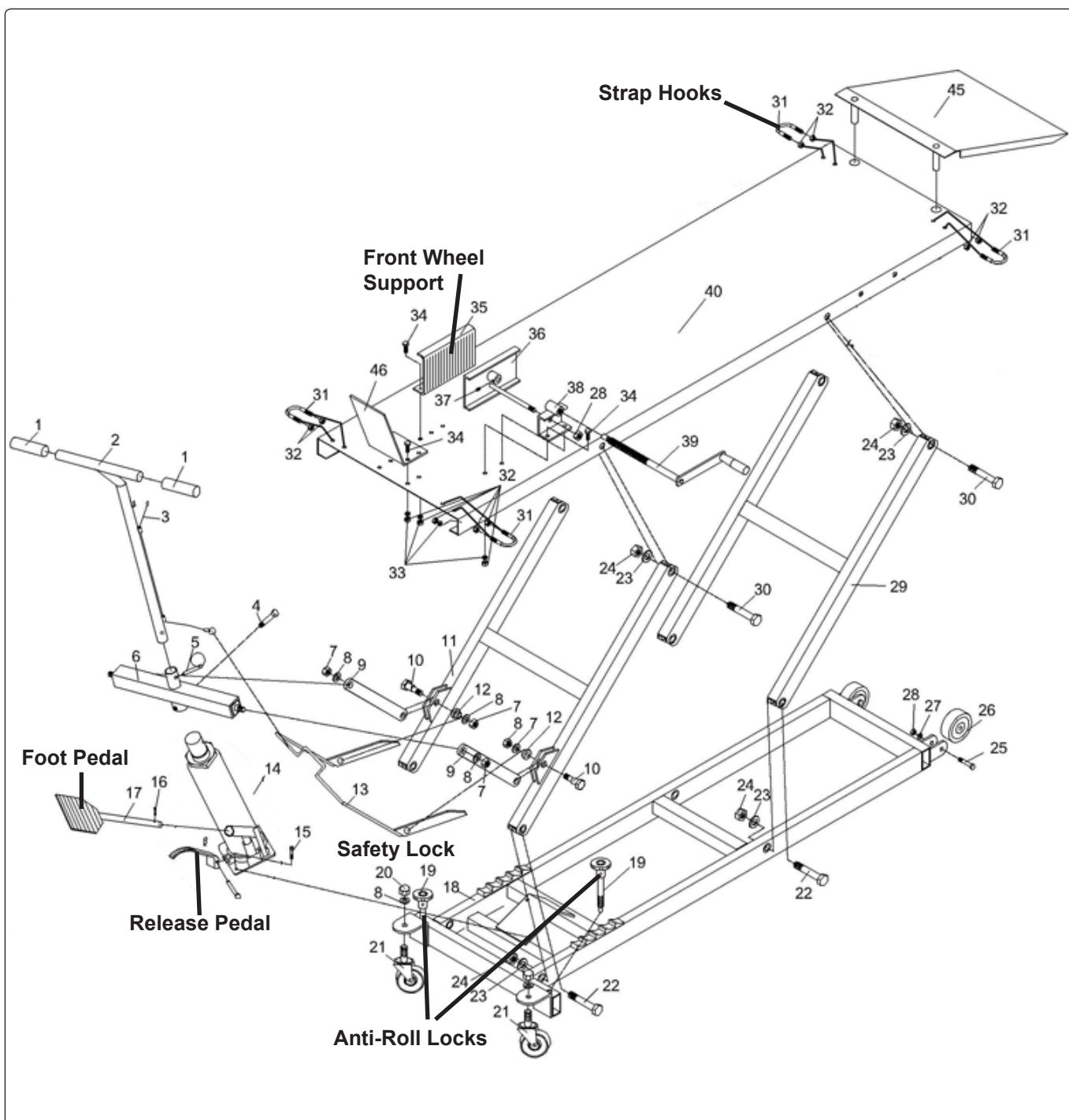
#### 3.2. Before first use.

3.2.1. Leave the pump for one hour, to allow the oil to settle, before purging the system.

**Note:** Failure to allow sufficient time for the oil to settle could result in air remaining in the oil. In this event, the pump will not purge completely first time and a second purge will be required.

3.2.2. Purge the hydraulic circuit to eliminate any air in the system, by fully pressing the release valve pedal and pumping the lift pedal (17) 15 to 20 times.

3.2.3. Test the lift, unladen, by raising it to full height and then lowering it. Depress release valve pedal slowly to control the rate of descent.



## 4. OPERATING INSTRUCTIONS

- ☐ **WARNING!** Ensure that you read, understand and apply the safety instructions before use.
- ☐ **WARNING! DO NOT attempt to overload the lift. The hydraulic pump is equipped with a safety valve which will prevent an excessive load from being lifted.**
- 4.1. Position the lift in a suitable area, checking that the surface on which the lift will stand is solid and flat (preferably concrete). Stop the platform inadvertently moving by screwing down the ant-roll locks(19).
- 4.2. Check that the lift is fully lowered and that the vice jaws are open.
- 4.3. Wheel the bike up the lead plate and onto the platform so that the front of the wheel is just beyond the vice. Support bike on the centre stand.
- 4.4. Clamp front wheel in vice to prevent any movement of the bike.
- 4.5. Ensure the bike is securely strapped to the platform.
- 4.6. Raise the lift by pumping the foot pedal (17).
- 4.7. When the lift is raised to the required height ensure the locking bar (13) locates behind one of the four positions of the main platform (18) so that the lift cannot be inadvertently lowered.
- 4.8. When work is complete, check under the lift to ensure that there are no obstructions and that it is safe to lower the unit. Raise the platform up enough to take the weight off the locking bar (13), lift the locking bar and then **SLOWLY** press the release valve pedal to **GENTLY** lower the lift.
- \* **IMPORTANT!:** The speed of lowering is controlled by the release valve. The more the valve is opened the more rapidly the lift descends. Ensure the descent is slow and controlled.
- 4.9. When the lift is fully lowered, unstrap the bike, open the vice jaws and remove the bike from the lift.

## 5. MAINTENANCE

- 5.1. When the lift is not in use, it must be stowed in the lowest position to minimise ram and piston corrosion.
- 5.2. Keep the lift clean and wipe off any oil or grease. Lubricate all moving parts..
- 5.3. Before each use check all parts. If any part of the lift is damaged or suspect remove lift from service and take necessary action to repair. **DO NOT** use the lift if it is believed to have been subjected to abnormal load or shock. Inspect and take appropriate action.
- 5.4. Periodically check the ram and piston for signs of corrosion. Clean exposed areas with a clean oiled cloth.
- 5.5. The hydraulic oil level is checked as follows:
  - 1) Remove hydraulic unit from lift and stand upright.
  - 2) Remove plug. Correct oil level is up to plug aperture - add hydraulic oil as necessary.
- ☐ **WARNING! Only a good quality hydraulic oil, such as SEALEY HYDRAULIC OIL, must be used. DO NOT use brake fluid.**
- \* **IMPORTANT!:** Only fully qualified personnel should attempt maintenance or repair. Contact your authorised dealer.

### **IMPORTANT: NO RESPONSIBILITY IS ACCEPTED FOR INCORRECT USE OF THE LIFT.**

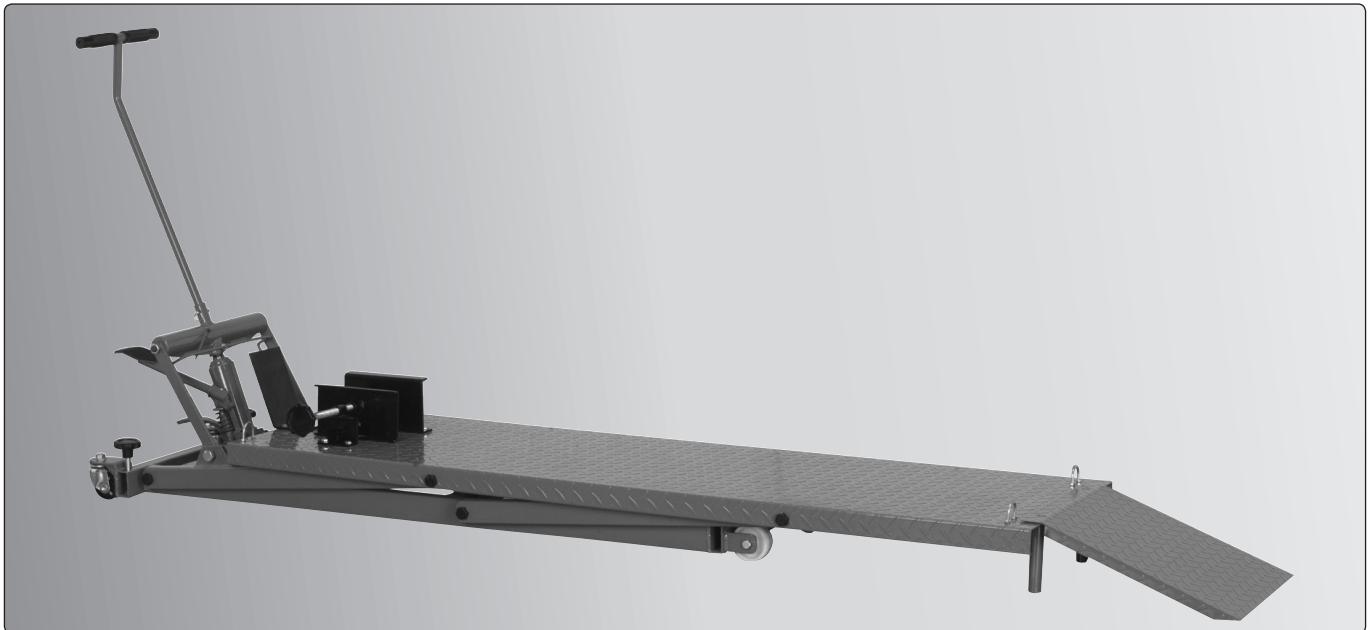
Hydraulic products are repaired by local service agents only. We have service/repair agents in all parts of the UK.

**DO NOT RETURN THE PRODUCT TO US.** Please call us on 01284 757500 to obtain the address and telephone number of your local agent.

If the product is under guarantee please contact your dealer.

### **De-commissioning**

Should the lift become completely unserviceable, draw off the oil into an approved container and dispose of the lift and the oil according to local regulations.



**NOTE:** It is our policy to continually improve products and as such we reserve the right to alter data, specifications and component parts without prior notice.

**IMPORTANT:** No liability is accepted for incorrect use of this product.

**WARRANTY:** Guarantee is 12 months from purchase date, proof of which will be required for any claim.

**INFORMATION:** For a copy of our latest catalogue and promotions call us on 01284 757525 and leave your full name and address, including postcode.



**Sole UK Distributor, Sealey Group,**  
Kempson Way, Suffolk Business Park,  
Bury St. Edmunds, Suffolk,  
IP32 7AR



01284 757500



www.sealey.co.uk



01284 703534



sales@sealey.co.uk

Original Language Version

MC455 | Issue: 2 - 01/06/11



## EC DECLARATION OF CONFORMITY

We the sole importers into the UK, hereby declare that the equipment described below

Description and Function:.....Motorcycle Lift Yankee 450kg Hydraulic.....

Model/Type:.....MC455.....

Manufacturing Date / Serial number (optional).....

Manufacturer's authorised representative within the EC: **Jack Sealey Ltd. Kempson Way, Suffolk Business Park, Bury St. Edmunds, Suffolk, IP32 7AR**

Conforms to the requirements of the following Directives, as indicated.

- |  |   |
|--|---|
| <input checked="" type="checkbox"/> 2006/42/EC Machinery Directive | <input type="checkbox"/> 2000/14/EC Outdoor Noise Emissions Directive |
| <input type="checkbox"/> 2006/95/EC Low Voltage Directive          | <input type="checkbox"/> 2002/96/EC WEEE Directive                    |
| <input type="checkbox"/> 2004/108/EC EMC Directive                 | <input type="checkbox"/> 2002/95/EC RoHS Directive                    |
| <input checked="" type="checkbox"/> 93/68/EEC CE Marking Directive | <input type="checkbox"/> 97/23/EC Pressure Equipment Directive        |

And the following harmonised standard(s): **BS EN 1570: 1999**.....

National technical standards and specifications (if applicable):.....

Technical file compiled by: **Jack Sealey Ltd.**

Signed:.....

Date:.....07-May-2010.....

Place: Bury St.Edmunds.

Name:.....Mark Sweetman.....

Position:.....Managing Director.....

Being the responsible person appointed by the manufacturer.



Sealey Power Products, Kempson Way,  
Suffolk Business Park, Bury St. Edmunds,  
Suffolk, IP32 7AR



01284 757500



01284 703534

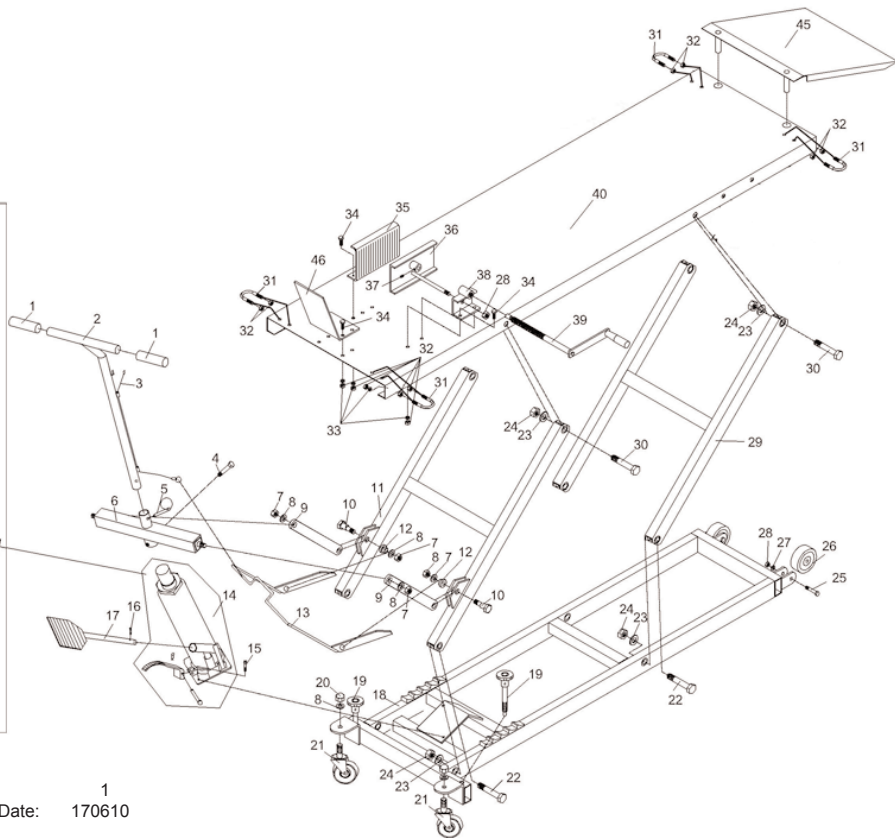
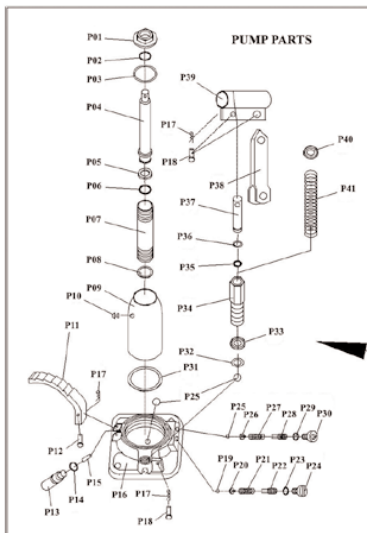


sales@sealey.co.uk



www.sealey.co.uk

PARTS FOR:  
**MOTORCYCLE LIFT YANKEE 450kg HYDRAULIC**  
MODEL: **MC455**



Issue: 1  
Issue Date: 170610

ITEM	PART NO	DESCRIPTION	ITEM	PART NO	DESCRIPTION	ITEM	PART NO	DESCRIPTION
1	MC455.01	RUBBER GRIP	30	MC455.30	BOLT	P15	MC455.P15	RELEASE VALVE PIN
2	MC455.02	HANDLE	31	MC455.31	U-CLAMP	P16	MC455.P16	BASE
3	MC455.03	BRAKE ROPE	32	MC455.32	NUT	P17	MC455.P17	COTTER PIN
4	MC455.04	BOLT	33	MC455.33	SPRING WASHER	P18	MC455.P18	PIN
5	MC455.05	SAFETY PIN	34	MC455.34	BOLT	P19	MC455.P19	STEEL BALL
6	MC455.06	HEAD JOINT	35	MC455.35	FIXED VICE	P20	MC455.P20	SPRING PLUNGER
7	MC455.07	LOCK NUT	36	MC455.36	MOVABLE VICE	P21	MC455.P21	SPRING
8	MC455.08	WASHER	37	MC455.37	BOLT	P22	MC455.P22	SCREW
9	MC455.09	LINK ROD	38	MC455.38	FIXING NUT	P23	MC455.P23	O-RING
10	MC455.10	STEPPED BOLT	39	MC455.39	THREADED ROD	P24	MC455.P24	SCREW
11	MC455.11	LIFTING ARM	40	MC455.40	PLATFORM	P25	MC455.P25	BALL
12	MC455.12	BUSH	45	MC455.45	LEADING PLATE	P26	MC455.P26	SPRING PLUNGER
13	MC455.13	BRAKE	46	MC455.46	BAFFLE PLATE	P27	MC455.P27	SPRING
14	MC455.14	HYDRAULIC UNIT				P28	MC455.P28	SCREW
15	MC455.15	BOLT				P29	MC455.P29	WASHER
16	MC455.16	BOLT				P30	MC455.P30	SCREW
17	MC455.17	FOOT PEDAL				P31	MC455.P31	LOWER SEALING GASKET
18	MC455.18	MAIN FRAME				P32	MC455.P32	WASHER
19	MC455.19	HAND WHEEL				P33	MC455.P33	LOWER SPRING RETAINER
20	MC455.20	DOMED NUT				P34	MC455.P34	PUMP CYLINDER
21	MC455.21	SWIVEL CASTOR				P35	MC455.P35	O-RING
22	MC455.22	BOLT				P36	MC455.P36	SEAL
23	MC455.23	WASHER				P37	MC455.P37	PISTON ROD
24	MC455.24	LOCK NUT				P38	MC455.P38	LINK
25	MC455.25	BOLT				P39	MC455.P39	HANDLE SOCKET
26	MC455.26	WHEEL				P40	MC455.P40	SPRING RETAINER
27	MC455.27	WASHER				P41	MC455.P41	SPRING
28	MC455.28	LOCK NUT						
29	MC455.29	LIFTING ARM						

**PUMP PARTS**

P01	MC455.P01	RAM CAP
P02	MC455.P02	RAM O-RING
P03	MC455.P03	TOP SEAL GASKET
P04	MC455.P04	RAM ASSEMBLY
P05	MC455.P05	RAM GASKET
P06	MC455.P06	O-RING
P07	MC455.P07	CYLINDER
P08	MC455.P08	LOWER SEALING GASKET
P09	MC455.P09	OIL RESERVOIR
P10	MC455.P10	OIL FILLER PLUG
P11	MC455.P11	PEDAL RELEASE VALVE
P12	MC455.P12	PIN
P13	MC455.P13	RELEASE VALVE ROD
P14	MC455.P14	O-RING

**NOTE:** It is our policy to continually improve products and as such we reserve the right to alter data, specifications and component parts without prior notice.

**IMPORTANT:** No liability is accepted for incorrect use of product.

**WARRANTY:** Guarantee is 12 months from purchase date, proof of which will be required for any claim.

**INFORMATION:** For a copy of our latest catalogue and promotions call us on 01284 757525 and leave your full name and address, including postcode.