



# RECHARGEABLE/12V TYRE INFLATOR & HIGH VOLUME PUMP, AIR COMPRESSOR, LED WORKLIGHT, PSI, KPA AND BAR

MODEL NO'S: **MAC13DR**

Thank you for purchasing a Sealey product. Manufactured to a high standard, this product will, if used according to these instructions, and properly maintained, give you years of trouble free performance.

**IMPORTANT:** PLEASE READ THESE INSTRUCTIONS CAREFULLY. NOTE THE SAFE OPERATIONAL REQUIREMENTS, WARNINGS & CAUTIONS. USE THE PRODUCT CORRECTLY AND WITH CARE FOR THE PURPOSE FOR WHICH IT IS INTENDED. FAILURE TO DO SO MAY CAUSE DAMAGE AND/OR PERSONAL INJURY AND WILL INVALIDATE THE WARRANTY. KEEP THESE INSTRUCTIONS SAFE FOR FUTURE USE.



Refer to  
instruction  
manual

## 1. SAFETY

- ☐ **WARNING!** Read instructions before use. Suitable for 12V operation only.
- ☐ **WARNING!** This compressor is capable of producing a high pressure. **DO NOT** inflate any item beyond its maximum capacity.
- ☐ **WARNING!** This device may be used by children aged 8 years and older, and by persons with reduced physical, sensory or mental capacities, or a lack of experience and knowledge, if they are supervised or have been instructed in how to use the device safely and understand the dangers that may arise when using it.
- ☐ **WARNING!** The user is responsible for any damage or injury to third parties that was caused by the use of the device.
- ☐ **WARNING!** During operation, never point the device at yourself or other individuals, and keep the device well way from your ears and eyes.
- ✓ There is a risk of injury!
- \* **DO NOT** leave the unit unattended while in operation.
- ✓ Check capacity and maximum pressure of inflatable before commencing inflation.
- ✓ Monitor the pressure gauge while in operation.
- ✓ The gauge should be used as an indication of pressure only. We recommend the use of a dial pressure gauge for definitive reading.
- ✓ Locate compressor on an appropriate surface for use.
- ✓ The 12V auxiliary plug must not be substituted with any other type of plug or electrical supply.
- \* **DO NOT** direct inflation hose connector head at yourself, others or animals.
- \* **DO NOT** allow children to play with the device.
- ✓ Keep children and non essential persons away from the inflation area.
- \* **DO NOT** carry by the hose, or pull the hose sharply from a valve.
- \* **DO NOT** pull the power cable from the vehicle accessory socket or battery terminal by the power lead.
- \* **DO NOT** get the compressor wet or use in the rain.
- \* **DO NOT** use the compressor for a task it was not designed to perform.
- \* **DO NOT** operate the compressor when you are tired, under the influence of alcohol, drugs or intoxicating medication.
- \* **DO NOT** operate the compressor if any parts are missing as this may cause failure or possible personal injury.
- \* **DO NOT** open the unit.
- \* **DO NOT** leave the device unsupervised while running. Comply with the filling instructions for the inflatable item. The inflatable item could burst and cause serious injuries.
- ☐ **WARNING!** When inflating tyres which are completely flat or articles with high volume low pressure, monitor temperature, as it can overheat rapidly in the absence of back pressure. A 10 minute rest period should be observed after 15 minutes of continuous run time to extend compressor service life.
- ✓ Keep the compressor clean and in good condition.
- ✓ Replace or repair damaged parts. Use recommended parts only. Non authorised parts may be dangerous and will invalidate the warranty.
- ✓ The integrated compressor unit is designed to adjust the pressure in tyres (e.g. car, motorbike and bicycle tyres), and for the generation of pressure for balls and other low-pressure inflatable items.

## 2. INTRODUCTION

Suitable for inflating tyres on cars, vans, 4x4s, motorcycles and bicycles. High volume air pump with inflate/deflate function suitable for air mattresses and inflatables. Rechargeable unit, supplied with 12V plug for alternative power option when battery has run flat. Maximum pressure 120psi. Air flow rate 350L/min with an inflation time of 240 seconds (0-30psi). Pressure units in psi, kPa and bar. Auto-shut-off safety feature when pre-set pressure is reached. Power bank with USB output 5V 2A ideal for charging mobile phones and portable devices. Integrated SMD LED worklight with red SOS and flashing light function. Easy-to-read backlit LCD digital display screen. Compact and lightweight unit with accessories fixed to the housing. Anti-vibration feet. Accessory kit includes Schrader connection, Presta type adaptor, ball spike, inflatables adaptor and USB-C charging cable.

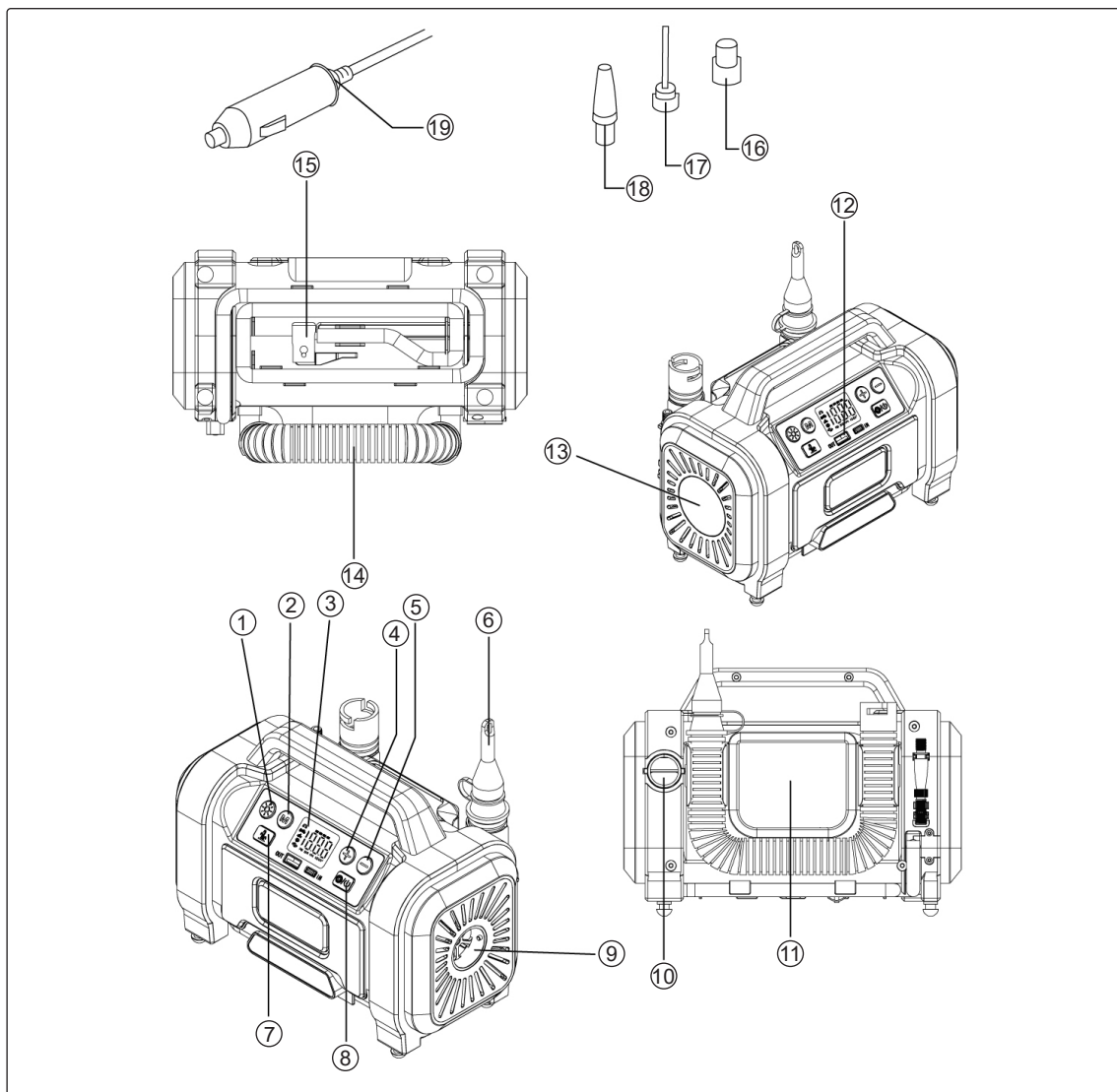
## 6. SPECIFICATION

<b>Model No:</b>	MAC13DR
<b>Airflow:</b>	350L/min/18.45cfm
<b>Battery:</b>	2000mAh (x3)/ 11.1V 2Ah 22.2Wh Li-ion
<b>High Volume Hose Length:</b>	450mm
<b>Hose Length:</b>	550mm
<b>Nett Weight:</b>	1.4kg
<b>Pressure Units:</b>	KPa, bar, psi, kg/cm <sup>2</sup>
<b>Range:</b>	0-120psi(0-8bar)
<b>Working Voltage:</b>	12V
<b>Continuous Working Time:</b>	30mins
<b>Max Current:</b>	10A
<b>USB Output/Input:</b>	5V/2A
<b>Supply:</b>	11.1V 2Ah 22.2Wh Li-ion Battery or 12V-10A

<b>Inflation Time (175/70/R13):</b>	0-30psi in 241sec (Internal Battery)/ 0-30psi in 254sec (12V Supply)
<b>Max. Air Output:</b>	120psi (8.3bar)
<b>Charging Time:</b>	3-5hr
<b>LED Light:</b>	3 Modes
<b>Accessories:</b>	Schader Connection, Presta Valve Adaptor, Ball needle, Inflatables Adaptor, USB-C Charging Cable
<b>Power:</b>	120W
<b>Cable length:</b>	3m



### 3. FEATURES



Part	Description
1	LED Button
2	Mode selection
3	Digital Display
4	"+" Button
5	"-" Button
6	High-volume Tapered Nozzle
7	Inflation Mode Switch (R:High-pressure Mode, L:High-volume Mode)
8	Power Supply Switch
9	Deflation

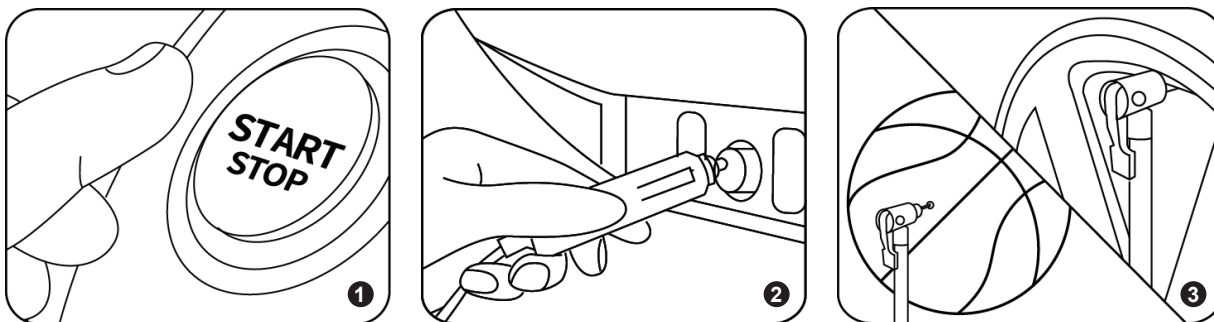
Part	Description
10	Inflation
11	Storage Compartment
12	USB-A output 5V/2A
13	LED Light (Mode 1:bright Light, Mode 2:Strobe Light 3:Red Light)
14	High-volume Hose
15	High-pressure Hose
16	Presta Valve Adaptor
17	Needle Nozzle
18	Tapered Nozzle
19	12V Cigarette Lighter Plug

### 4. SPARES

MAC13DR-01	Tyre Inflator/Air Pump Hose/Tyre Inflator/Air Pump Hose
MAC13DR-02	Presta Type Adaptor/Presta Type Adaptor
MAC13DR-03	Ball Spike/Ball Spike
MAC13DR-04	Inflatable Adaptor/Inflatable Adaptor
MAC13DR-05	Charging Cable (USB - C-type) / Charging Cable (USB - C-type)

## 5. OPERATION

### 5.1. HIGH PRESSURE ITEMS 12V DC POWER SUPPLY



Step 1. Start the car engine before plugging in the power cord.

Step 2. Plug the power cord into the DC socket.

Step 3. Attach the universal inflating valve adaptor to the item, using the clip to lock into place.

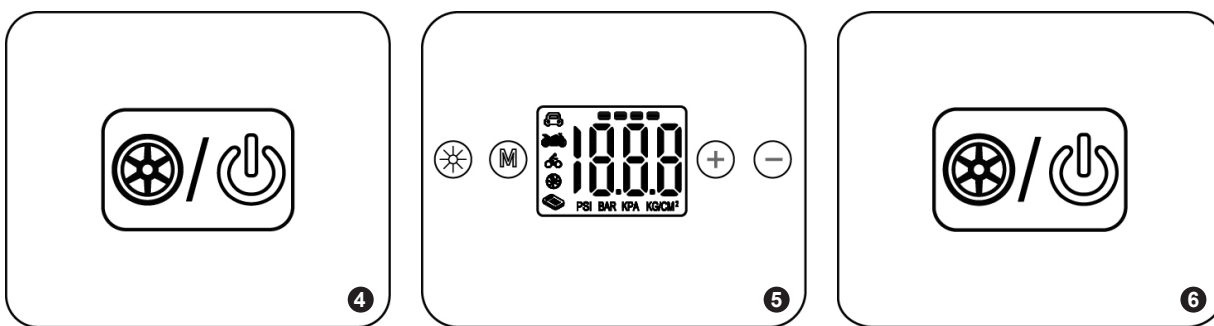
Step 4. Press and hold the power On/Off button to start the power supply.

Step 5. Press the "M" button to select the display unit, then press "-" or "+" to set the desired pressure.

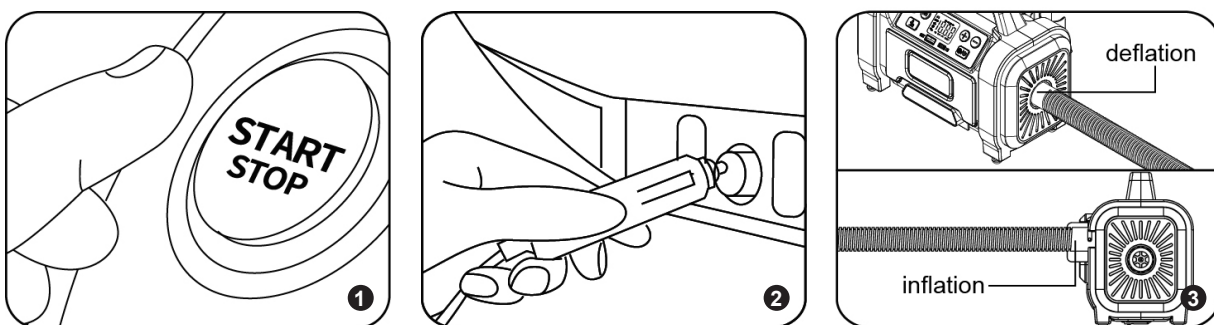
Step 6. Select the inflation mode button the air pump will automatically start.

Step 7. The air pump will automatically stop inflating once the preset pressure is reached.

**NOTE:** Press the "LED" button to select the torch function, choose between the LED light remaining on, or red flashing for the red SOS function.



### 5.2. LOW PRESSURE ITEMS 12V DC POWER SUPPLY




Step 1. Start the car engine before plugging in the power cord.

Step 2. Plug the power cord into the DC socket.


Step 3. For deflation, connect the high volume hose to the air pumps's air inlet. For inflation, connect the high-volume hose to the air pumps air outlet, and twist the hose to lock in place.

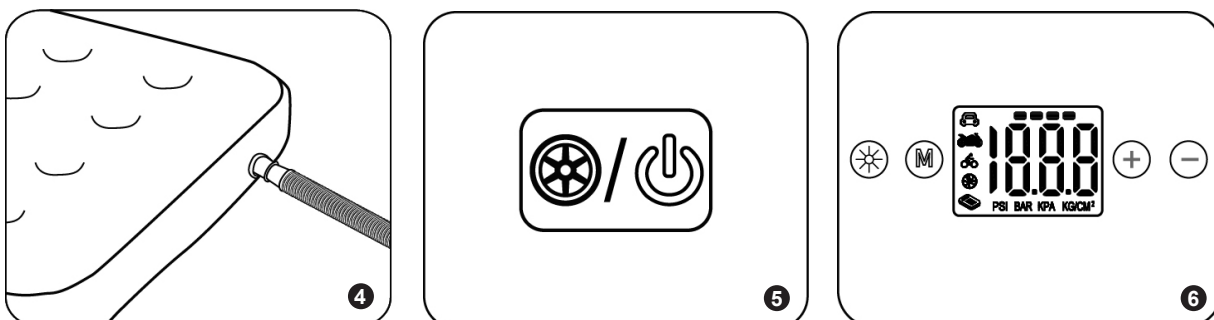
Step 4. Connect the high volume hose to the low pressure product. (if the inflating nozzles are required, install correctly before use).

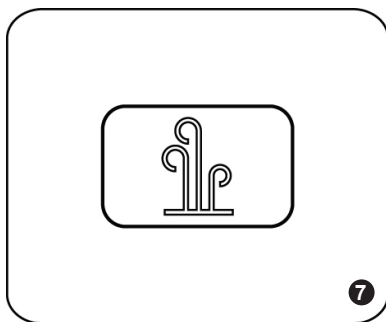
Step 5. Press and hold the On/Off button to start the power supply.

Step 6. Press the "M" button to select the inflation mode, and then select  mode.

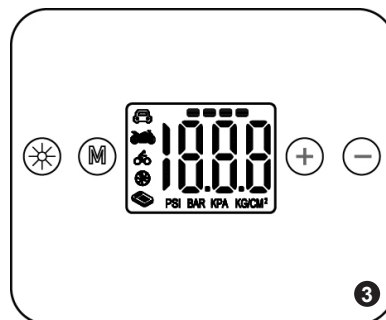
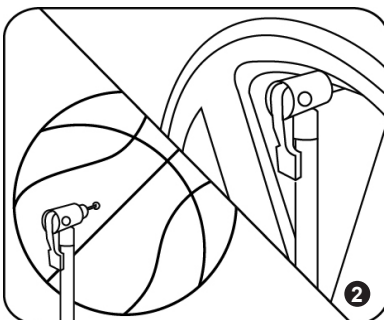
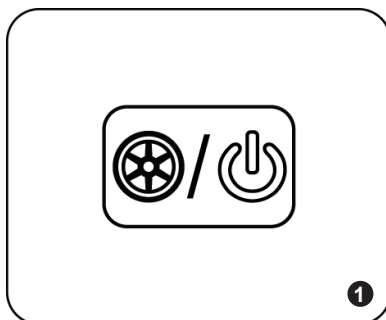
Step 7. Press the inflation mode button.  The air pump will automatically start.

Step 8. When the desired pressure is reached, it is important to manually press  to turn off the air pump.





#### 6.1. LI-BATTERY POWER SUPPLY-HIGH PRESSURE ITEMS



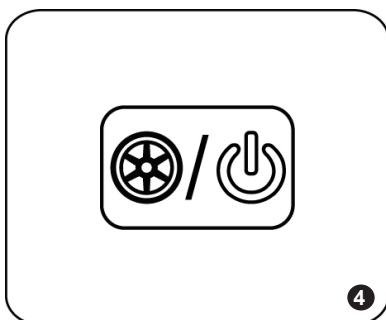
Step 1. Press and hold the switch to start the power supply.

Step 2. Attach the universal inflating valve adaptor to the item, using the clip to lock into place.

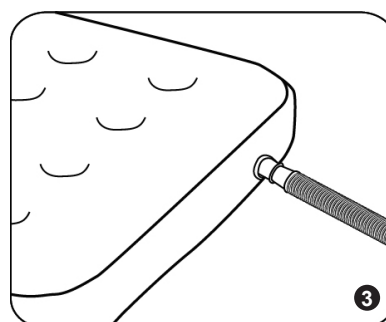
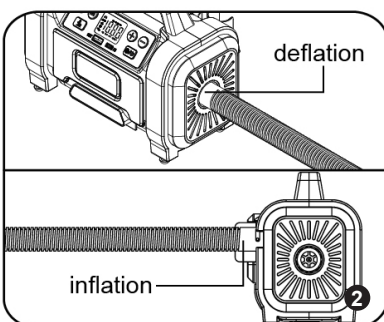
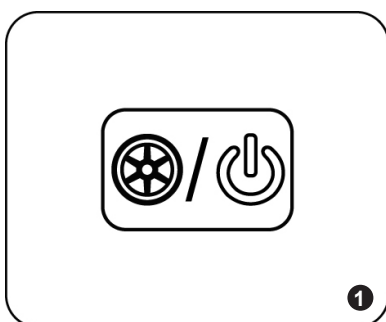
Step 3. Press the "M" button to select the display unit, then press "-" or "+" to set the desired pressure.

Step 4. Select the inflation mode button the air pump will automatically start.

Step 5. The air pump will automatically stop inflating once the preset pressure is reached.




#### 6.2. LI-BATTERY POWER SUPPLY-LOW PRESSURE ITEMS




Step 1. Press and hold the switch to start the power supply.

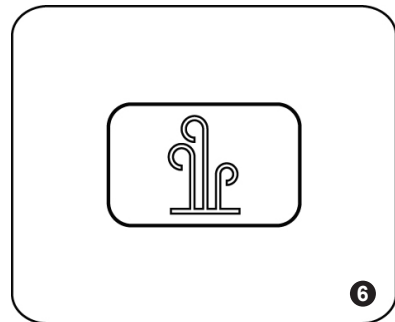
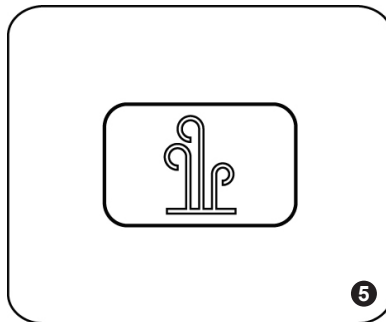
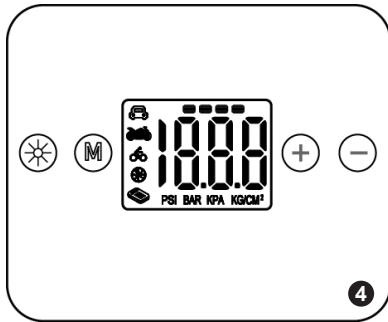
Step 2. For deflation, connect the high volume hose to the air pumps's air inlet. For inflation, connect the high-volume hose to the air pumps air outlet, and twist the hose to lock in place.

Step 3. Connect the high volume hose to the low pressure product. (if the inflating nozzles are required, install correctly before use).

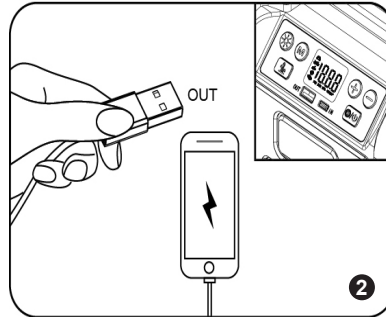
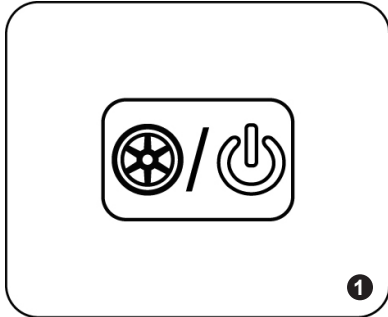
Step 4. Press the "M" button to select the inflation mode, and then select  mode.

Step 5. Press the inflation mode button.  The air pump will automatically start.

Step 6. When the desired pressure is reached, it is important to manually press  to turn off the air pump.



### 6.3. USB OUTPUT FUNCTION



Step 1. Press and hold the switch to start the power supply.

Step 2. Plug USB into output to charge devices.

### 6.4. LED FUNCTION

Press the LED light button (sun icon) to select the LED light function, choose between ON, red flashing and red SOS function red.

### 6.5. BALL INFLATION

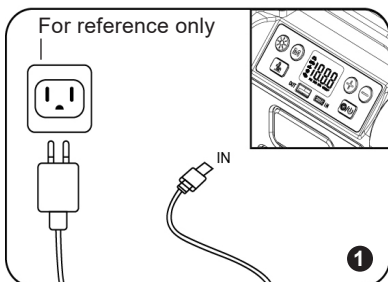
Make sure the needle adaptor is inserted correctly. (See illustrations below for reference).

Press the "M" button to select the ball mode, select the desired pressure, press inflation button (monitor ball pressure and remove needle if excessive pressure is reached).

**NOTE: 100PSI=689.47KPA=6.89BAR**



### 6.8. CHARGING THE BATTERY



6.9. Use the supplied USB cable to re-charge your inflator, charge time is 3-5hrs depending on the state of the battery, other functions are disabled during the charging process.

6.10. Charge the device for 5-7hrs before initial use. After the initial charge, the battery will take about 4-5hrs to achieve a full charge.

6.11. To keep the battery at optimum operating levels we recommend recharging the unit every 3 months.

6.12. During charging, the battery symbol will flash continually on the unit. When fully charged, the battery symbol will display a full charge.



## 7. MAINTENANCE

### 7.1. HOW TO REPLACE A FUSE IN THE 12V PLUG

- 7.1.1. Unscrew the top of the plug using a pair of long nose pliers.
- 7.1.2. Remove the fuse.
- 7.1.3. Insert a new fuse.
- 7.1.4. Screw the top plug back into socket.

### 7.2. GENERAL

- 7.2.1. Keep the device in a dry location and out of the reach of children. This helps prevent device damage and possible personal injuries.

### 7.3. CLEANING

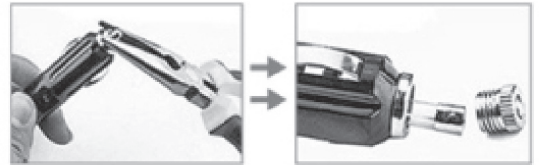
- 7.3.1. Clean the surfaces with a soft cloth.

### 7.4. END OF SERVICE

- 7.4.1. Through years of normal wear, the tyre inflator will eventually become unserviceable. When this happens ensure that it is disposed of in accordance with local authority regulations.

### 7.5. BATTERY DISPOSAL

- 7.5.1. Exposure to high temperatures can cause the batteries to explode; **DO NOT** dispose of in a fire. Some countries have regulations concerning battery disposal. Follow all applicable regulations. Return used batteries to a collection location for recycling.



### BATTERY REMOVAL

Remove the screws in the back section of the tyre inflator section to remove the batteries.

Under the Waste Batteries and Accumulators Regulations 2009, Jack Sealey Ltd are required to inform potential purchasers of products containing batteries (as defined within these regulations), that they are registered with Valpak's registered compliance scheme. Jack Sealey Ltd's Batteries Producer Registration Number (BPRN) is BPRN00705.



### ENVIRONMENT PROTECTION

Recycle unwanted materials instead of disposing of them as waste. All tools, accessories and packaging should be sorted, taken to a recycling centre and disposed of in a manner which is compatible with the environment. When the product becomes completely unserviceable and requires disposal, drain any fluids (if applicable) into approved containers and dispose of the product and fluids according to local regulations.



REGISTER YOUR  
PURCHASE HERE



### WEEE REGULATIONS

Dispose of this product at the end of its working life in compliance with the EU Directive on Waste Electrical and Electronic Equipment (WEEE). When the product is no longer required, it must be disposed of in an environmentally protective way. Contact your local solid waste authority for recycling information.

**NOTE:** It is our policy to continually improve products and as such we reserve the right to alter data, specifications and component parts without prior notice. Please note that other versions of this product are available. If you require documentation for alternative versions, please email or call our technical team on [technical@sealey.co.uk](mailto:technical@sealey.co.uk) or 01284 757505.

**IMPORTANT:** No Liability is accepted for incorrect use of this product.

**WARRANTY:** Guarantee is 12 months from purchase date, proof of which is required for any claim.

Sealey Group, Kempson Way, Suffolk Business Park, Bury St Edmunds, Suffolk. IP32 7AR



01284 757500



[sales@sealey.co.uk](mailto:sales@sealey.co.uk)



[www.sealey.co.uk](http://www.sealey.co.uk)