



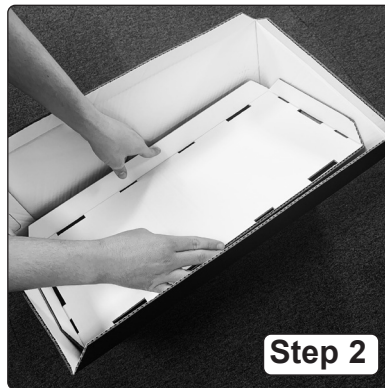
## 3L FUEL CAN DISPLAY STAND

MODEL NO: **JC3DST**



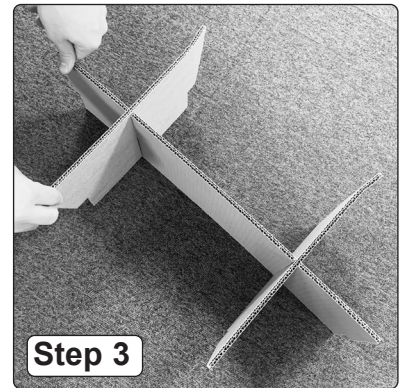
**Step 1**

Fold base outer as directed and lock securely in place using tabs.



**Step 2**

Turn base unit over and insert base plate. Assemble using tabs and slots provided.



**Step 3**

Assemble base internal supports.



**Step 4**

Place support frame into base unit and firmly turn down the tabs to form an even and stable platform.



**Step 5**

Turn base upright and fold and lock all tabs to create a solid base.



**Step 6**

Fully locate top unit into slots in base. Ensure all locking tabs are located correctly before pushing into base unit slots.



**Step 7**

Attach header to top edge of unit.