



INSTRUCTIONS FOR:

# INFRARED QUARTZ HEATER WALL MOUNTING WITH REMOTE CONTROL

MODEL No: **IWMH2003RC.V2**

Thank you for purchasing a Sealey product. Manufactured to a high standard, this product will, if used according to these instructions, and properly maintained, give you years of trouble free performance.



**IMPORTANT: PLEASE READ THESE INSTRUCTIONS CAREFULLY. NOTE THE SAFE OPERATIONAL REQUIREMENTS, WARNINGS & CAUTIONS. USE THE PRODUCT CORRECTLY AND WITH CARE FOR THE PURPOSE FOR WHICH IT IS INTENDED. FAILURE TO DO SO MAY CAUSE DAMAGE AND/OR PERSONAL INJURY AND WILL INVALIDATE THE WARRANTY. KEEP THESE INSTRUCTIONS SAFE FOR FUTURE USE.**

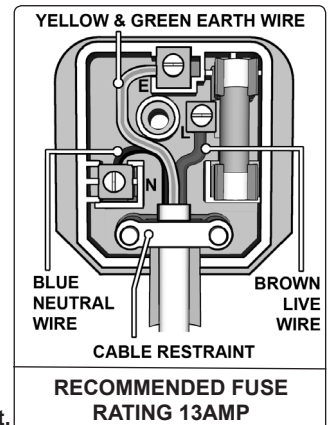


Refer to the instruction manual

## 1. SAFETY

### 1.1. ELECTRICAL SAFETY (Class I)

- WARNING!** It is the responsibility of the owner and the operator to read, understand and comply with the following:  
You must check all electrical products, before use, to ensure that they are safe. You must inspect power cables, plugs, sockets and any other connectors for wear or damage. You must ensure that the risk of electric shock is minimised by the installation of appropriate safety devices. A Residual Current Circuit Breaker (RCCB) should be incorporated in the main distribution board. We also recommend that a Residual Current Device (RCD) is used. It is particularly important to use an RCD with portable products that are plugged into a supply which is not protected by an RCCB. If in any doubt consult a qualified electrician. You may obtain a Residual Current Device by contacting your Sealey dealer.  
You must also read and understand the following instructions concerning electrical safety.
  - 1.1.1. The Electricity at Work Act 1989 requires that all portable electrical appliances, if used on business premises, are tested by a qualified electrician, using a Portable Appliance Tester (PAT), at least once a year.
  - 1.1.2. The Health & Safety at Work Act 1974 makes owners of electrical appliances responsible for the safe condition of those appliances and the safety of the appliance operators. If in any doubt about electrical safety, contact a qualified electrician.
  - 1.1.3. Ensure that the insulation on all cables and on the appliance is safe before connecting it to the power supply. See 1.1.1 and 1.1.2 and use a Portable Appliance Tester.
  - 1.1.4. Ensure that cables are always protected against short circuit and overload.
  - 1.1.5. Regularly inspect power supply cables and plugs for wear or damage and check all connections to ensure that none are loose.
  - 1.1.6. Important: Ensure that the voltage marked on the appliance matches the power supply to be used and that the plug is fitted with the correct fuse - see fuse rating at right.
  - 1.1.7. **DO NOT** pull or carry the appliance by the power cable.
  - 1.1.8. **DO NOT** pull the plug from the socket by the cable.
  - 1.1.9. **DO NOT** use worn or damaged cables, plugs or connectors. Immediately have any faulty item repaired or replaced by a qualified electrician. When a BS 1363/A UK 3 pin plug is damaged, cut the cable just above the plug and dispose of the plug safely.  
Fit a new plug according to the following instructions (UK only).
    - a) Connect the **GREEN/YELLOW** earth wire to the earth terminal 'E'.
    - b) Connect the **BROWN** live wire to the live terminal 'L'.
    - c) Connect the **BLUE** neutral wire to the neutral terminal 'N'.
- d) After wiring, check that there are no bare wires, that all wires have been correctly connected, that the cable outer insulation extends beyond the cable restraint and that the restraint is tight.



### 1.2. GENERAL SAFETY INSTRUCTIONS

- ✓ Familiarise yourself with the applications and limitations of the heater.
- ✓ Ensure the heater is in good order and condition before use. If in any doubt **DO NOT** use the unit and contact an electrician or your Sealey dealer.
- ✓ Only use recommended attachments and parts. Using unauthorised parts may be dangerous and will invalidate your warranty.
- ✓ Check that element guards are in place, undamaged and firmly attached.
- ✓ Keep tools and other items away from the heater when it is in use.
- ✓ Keep the work area clean and clear of unnecessary items.
- ✓ Keep children and unauthorised persons away from the heater, as it gets **very hot**.
- ✓ Disconnect from mains and allow to cool before moving or attempting any cleaning or maintenance.
- X **DO NOT** get the heater wet or use in damp or wet locations or areas where there is condensation.
- X **DO NOT** locate the heater below the power outlet.
- X **DO NOT** move the heater whilst in operation or even when still warm.
- X **DO NOT** touch the heater elements, even when cold.
- X **DO NOT** dismantle the heater for any reason. The heater must be checked by qualified personnel only.
- X **DO NOT** use this product to perform a task for which it has not been designed.
- WARNING! If a fuse blows, ensure it is replaced with an identical fuse type and rating.**
- ✓ When not in use, store the heater carefully in a safe, dry, childproof location.
- WARNING!** Never touch the element glass directly with fingers. Use a soft cloth, otherwise the tube may get damaged.
- WARNING!** Ensure the heater is at least 900mm from any object.
  
- WARNING! The warnings, cautions and instructions in this manual cannot cover all possible conditions and situations that may occur. It must be understood by the operator that common sense and caution are factors which cannot be built into this product, but must be applied by the operator**

- ❑ **IMPORTANT!** This appliance is not intended for use by persons (including children) with reduced physical, sensory or mental capabilities or lack of experience and knowledge, unless they have been given supervision or instruction concerning the use of the appliance by a person responsible for their safety. Children should be supervised to ensure that they do not play with the appliance.

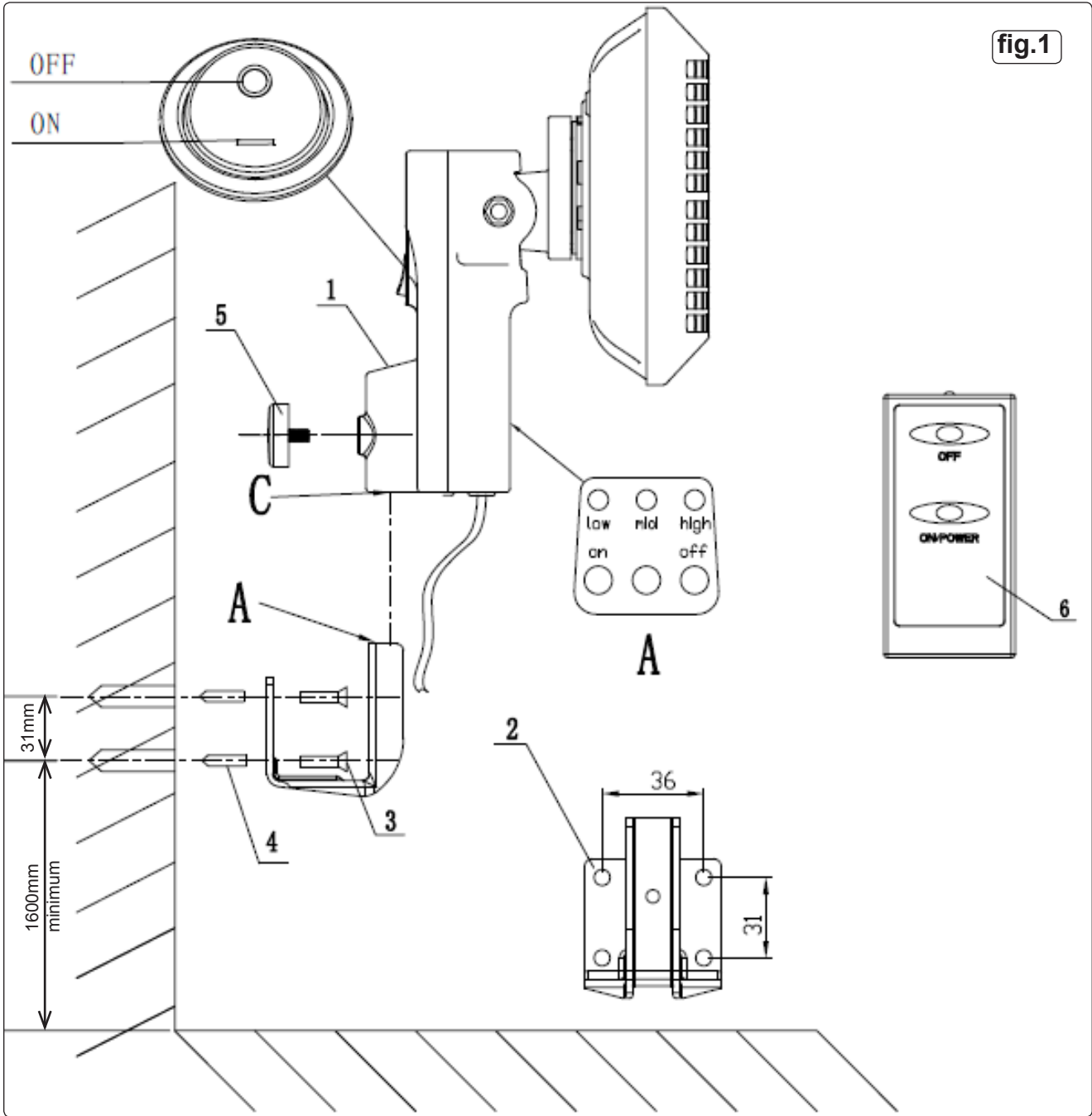


**2. INTRODUCTION**

A totally dry heat, no condensation, no gas, no fumes and no smell. Reaches maximum heat output within seconds of being turned on. Highly polished aluminium reflector for maximum heat efficiency. Adjusts horizontally through 25° while mounted. Three settings, controlled by push on/off switch or remote control, allowing unit to be on full, half or low power. Ideal for industrial or domestic applications. Suitable for indoor and outdoor use, if weather protected.

**3. SPECIFICATION**

Power: ..... 2000W  
 Input supply: ..... 230V 50Hz 13A  
 Dimensions (W x H x D): ..... 485 x 250 x 170mm



## 4. CONTENTS

Item No	Description	Qty
1	Control Box	1
2	Wall Bracket	1
3	Self Tapping Screw ST4 X 30	4
4	Plastic Wall Plug	4
5	Thumb Screw M6 X 12	1
6	Remote Controller	1

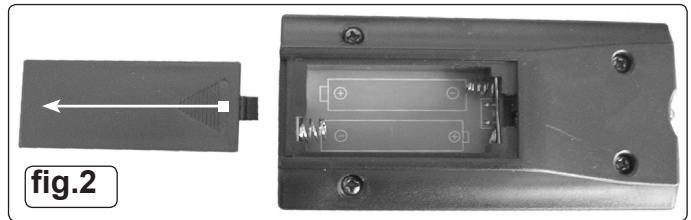


fig.2

## 5. INSTALLATION

### 5.1. WALL MOUNTING (fig.1).

▲ **IMPORTANT! The heater should always have a minimum clearance of 300mm from a ceiling and at least 1000mm from any object.** Ensure that the mounting surface is capable of supporting the weight of the heater.

- 5.1.1. Using the wall bracket (2) as a template, drill the wall and insert suitable wall fixings (4). **NOTE:** Minimum height for lower fixing screws 1600mm.
- 5.1.2. Secure the metal bracket to the wall using screws (3).
- 5.1.3. Register vertically the heater assembly (1) on to the wall bracket (2) and clamp when in position using the thumb screw (5).
- 5.1.4. Adjust the angle of heater to direct heat where required.

## 6. OPERATION

**Note:** The infrared lamp is fragile and therefore it is important that it is not subjected to any unnecessary shocks or vibration and is not moved when it is on or still warm. Only move once completely cooled down.

☐ **WARNING! Ensure you read, understand and apply the safety instructions in Section 1 before using the heater.**

- 6.1. Ensure the heater is at least 1000mm from any object. The heater can be tilted from 0° to 25°, set it to the required angle before switching the heater on.
- 6.2. Plug in the heater and switch it on using either the control on the base of the heater or by using the remote.
- 6.3. The heater will start on the low setting, each press of the on/power button will cycle the heater onto the medium setting, high setting and then back to the low setting.
- 6.4. When the heater is no longer required, switch off, using the off button on the unit or the off button on the remote and unplug the unit. **NOTE:** When switching off using the remote, the heater and lights will be in stand by mode.
- 6.5. The heater has a built in tilt switch safety mechanism that switches off the unit if it is tilted beyond 25° either forwards or backwards. This prevents fire in the event of the unit being knocked over. If the unit does not turn on again when returned to the vertical, tip it approximately 25° in the opposite direction until you hear the internal switch operate. As the heater switches on return it to the vertical position.

## 7. MAINTENANCE

- 7.1. Make sure the heater plug is disconnected from the mains supply before any cleaning is attempted. Also allow the heater to cool completely. **DO NOT** use water or other liquids, or harsh abrasive cleaners to clean the heater. **DO NOT** touch the carbon fibre elements with your fingers as this may damage the tube.
  - 7.2. Clean the exterior with a soft damp cloth and some mild detergent.
  - 7.3. To replace any of the elements or lamps, contact your authorised Sealey dealer.
  - 7.4. To change the remote control batteries, press down and push back the battery cover (fig.2), remove old batteries and replace with two new AAA batteries.
- ☐ **WARNING! DO NOT mix old and new batteries and dispose of old batteries in accordance with local authority regulations.**

Parts support is available for this product. To obtain a parts listing and/or diagram, please log on to [www.sealey.co.uk](http://www.sealey.co.uk), email [sales@sealey.co.uk](mailto:sales@sealey.co.uk) or telephone 01284 757500.

### Environmental Protection



Recycle unwanted materials instead of disposing of them as waste. All tools, accessories and packaging should be sorted, taken to a recycling centre and disposed of in a manner which is compatible with the environment. When the product becomes completely unserviceable and requires disposal and dispose of the product according to local regulations.

#### WEEE Regulations

Dispose of this product at the end of its working life in compliance with the EU Directive on Waste Electrical and Electronic Equipment (WEEE). When the product is no longer required, it must be disposed of in an environmentally protective way. Contact your local solid waste authority for recycling information.

**Battery Removal: see section 5.4. for battery removal details.**

Under the Waste Batteries and Accumulators Regulations 2009, Jack Sealey Ltd are required to inform potential purchasers of products containing batteries (as defined within these regulations), that they are registered with Valpak's registered compliance scheme. Jack Sealey Ltd's Batteries Producer Registration Number (BPRN) is BPRN00705.



**NOTE:** It is our policy to continually improve products and as such we reserve the right to alter data, specifications and component parts without prior notice.

**IMPORTANT:** No liability is accepted for incorrect use of this product.

**WARRANTY:** Guarantee is 12 months from purchase date, proof of which will be required for any claim.



Sole UK Distributor, Sealey Group,  
Kempson Way, Suffolk Business Park,  
Bury St. Edmunds, Suffolk,  
IP32 7AR



01284 757500



[www.sealey.co.uk](http://www.sealey.co.uk)



01284 703534



[sales@sealey.co.uk](mailto:sales@sealey.co.uk)