

SEALEY

HYDRAULIC SCISSOR LIFT PLATFORM TABLE 1000KG CAPACITY

MODEL NO: HPT1000.V2

Thank you for purchasing a Sealey product. Manufactured to a high standard, this product will, if used according to these instructions, and properly maintained, give you years of trouble free performance.

IMPORTANT: PLEASE READ THESE INSTRUCTIONS CAREFULLY. NOTE THE SAFE OPERATIONAL REQUIREMENTS, WARNINGS & CAUTIONS. USE THE PRODUCT CORRECTLY AND WITH CARE FOR THE PURPOSE FOR WHICH IT IS INTENDED. FAILURE TO DO SO MAY CAUSE DAMAGE AND/OR PERSONAL INJURY AND WILL INVALIDATE THE WARRANTY. KEEP THESE INSTRUCTIONS SAFE FOR FUTURE USE.



Refer to instructions



Wear safety footwear



DO NOT stand on the unit



Keep hands and feet clear of the lifting mechanism



1/1 Qmax



1/2 Qmax



1/3 Qmax

DO NOT overload the unit

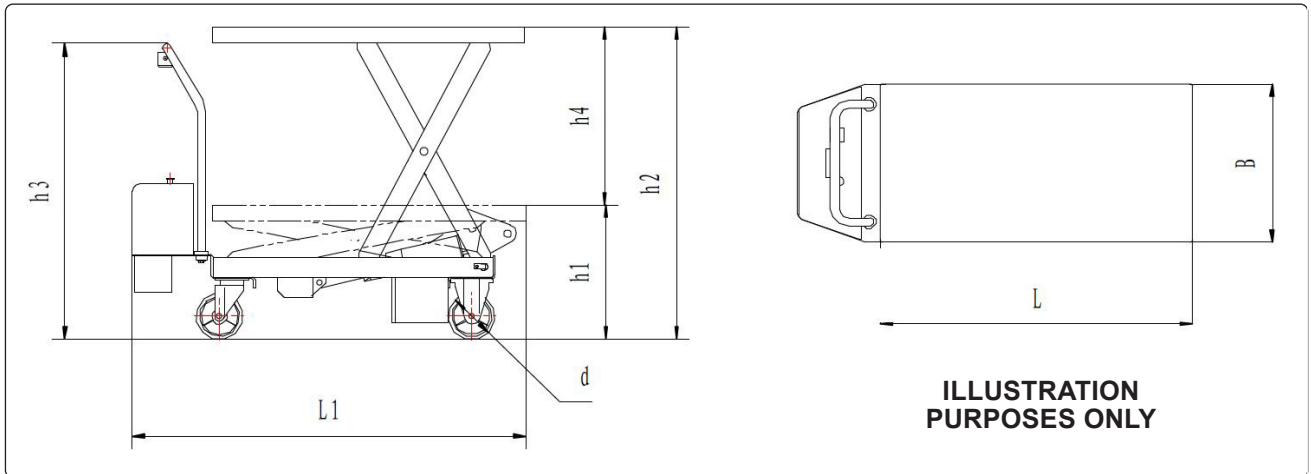
1. SAFETY

- WARNING!** Ensure all Health and Safety, local authority, and general workshop practice regulations and recommendations are strictly adhered to when lifting or moving heavy loads. The lifting or movement of heavy loads may be dangerous if not undertaken correctly.
- ✓ Familiarise yourself with the application and limitations, as well as the specific potential hazards peculiar to the unit.
- ✓ Maintain the unit in good condition (use an authorised service agent).
- ✓ Replace or repair damaged parts. Use genuine parts only. Unauthorised parts may be dangerous and will invalidate the warranty.
- ✓ Use a qualified person to lubricate and maintain the unit.
- ✗ **DO NOT** use brake fluid to top up hydraulic unit. Use Sealey hydraulic oil only.
- ✓ Keep the unit clean for best and safest performance. **DO NOT** use on Tarmac when fully laden as the wheels may sink in.
- ✓ Locate the unit in an adequate working area for its function. Keep the area clean and tidy and free from unrelated materials.
- WARNING!** Use unit on flat, level, solid ground, preferably concrete. Ensure the floor over which the unit will be transported is swept clean and that there are no obstacles in the way.
- ✓ Keep the work area clean, uncluttered and ensure there is adequate lighting.
- ✓ The unit should only be used by trained individuals.
- ✓ Use indoors only. The table should be operated with an ambient temperature between +5°C and +40°C.
- WARNING! DO NOT** use in windy conditions. Risk of tipping and loss of load.
- ✓ Keep children and non essential persons away from the loading/unloading and transporting area.
- ✓ Keep hands and body clear of the edge and underside of the platform when operating the unit.
- ✓ Maintain correct balance and footing. Ensure the floor is not slippery and wear non-slip shoes.
- WARNING!** Ensure the load is placed level and centrally on the platform, and if necessary strap the load in place before attempting to lift, lower, or transport. When raised, check that the platform/load will not foul on the handle and/or your hand when lowering the load.
- WARNING!** Use the unit with diligence. **DO NOT** allow lifting the table to knock into anything. Even when unladen, the unit is heavy and if misused could cause serious damage and/or personal injury. Continually monitor transportation, lifting and lowering operations. Use the designated handle to move the unit. Be aware of the centre of gravity of the unit and load.
- ✓ Take care to ensure you can view the way ahead when moving the unit. Take special care when approaching blind corners.
- ✓ Before lifting, check that there are no overhead obstructions.
- ✓ Engage the wheel locks before attempting to raise or lower the platform.
- ▲ **DANGER! If a heavy load tips or leans STOP WHAT YOU ARE DOING. MOVE QUICKLY TO A SAFE DISTANCE. DO NOT TRY TO HOLD OR STEADY a heavy load. Failure to follow this instruction may cause serious personal injury.**
- ✓ Ensure the unit is fully lowered before attempting to transport a load.
- ✓ Before lowering the platform, ensure there are no obstructions underneath the platform and all persons are standing clear of the unit.
- ✓ The lowering speed is a fixed rate regardless of the load weight. Stop lowering by releasing the valve control lever on the handle.
- WARNING! DO NOT** exceed the rated capacity of the unit.
- ✗ **DO NOT** modify the unit.
- ✗ **DO NOT** use the unit if a part is missing or damaged.
- ✗ **DO NOT** load the unit so that it is top heavy. Ensure loads are evenly placed on the unit.
- ✗ **DO NOT** ride on the unit or allow any person to be transported or lifted on the table.
- ✗ **DO NOT** use the unit for any purpose other than lifting, lowering and transporting loads.
- ✗ **DO NOT** allow the unit to free wheel in transit. Always propel and control the unit by using the handle.
- ✗ **DO NOT** use the unit on sloping surfaces.
- ✗ **DO NOT** operate the unit when you are tired or under the influence of alcohol, drugs or intoxicating medication.
- ✗ **DO NOT** allow children to operate the unit.
- ✗ **DO NOT** adjust or tamper with the hydraulic safety valve.
- ✗ **DO NOT** place any part of your body within or under the unit platform when raised.
- ✗ **DO NOT** put your hand or foot in the scissor mechanism. Risk of shearing and/or crushing.
- ✗ **DO NOT** side or end load the table. Ensure the load is distributed on at least 80% of the table area.
- ✗ **DO NOT** operate if the temperature of the hydraulic oil is too high.
- ✗ **DO NOT** lower the table with a load too quickly, or with sudden stops, as this could damage the table and result in serious injury/damage.
- ✗ **DO NOT** move the table if the visibility is insufficient.
- ✗ **DO NOT** allow people to stand behind or in front of the table when it is moving.
- ✗ **DO NOT** put foot in front of rolling wheels. Injury could result.
- ✓ When not in use, fully lower the platform and store in a safe, dry, childproof area.
- NOTE:** prolonged continuous working might cause damage of hydraulic power pack.

2. INTRODUCTION

Heavy-duty construction. Fitted with four composite wheels, two fixed and two locking castor, for easy-rolling over rough workshop and warehouse floors. One-piece hydraulic unit controlled by large rear mounted foot pedal. Safety release mechanism positioned on handlebar for smooth controlled descent and safety bars to prevent inadvertent lowering. Suitable for numerous garage, industrial and warehouse applications. May also be used as a mobile service bench.

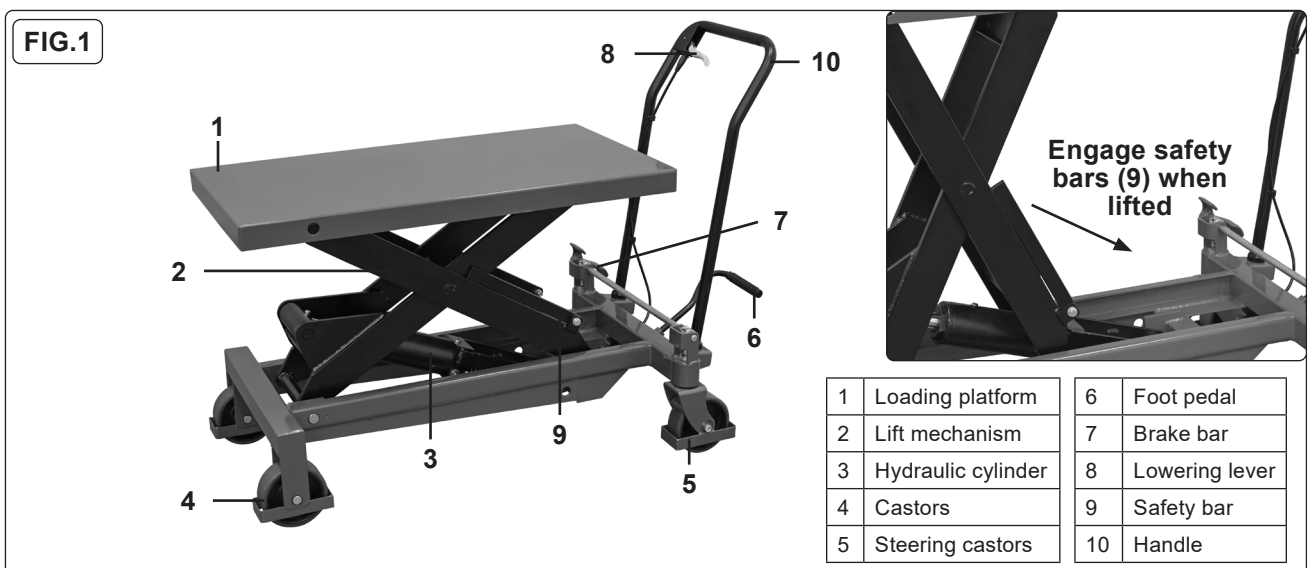
3. SPECIFICATION



Model No:.....**HPT1000.V2**
 Capacity: 1000kg
 Max Table Height (h₂): 990mm
 Min Table Height (h₁): 380mm
 Table Size (L x B): 1016 x 510mm
 Castor Wheels: Ø150 x 50mm

Overall Length (L₁): 1330mm
 Handle Height (h₃): 980mm
 Vertical Lifting (h₄): 610mm
 Foot Pedal Cycles to Max. Height: ≤82
 Nett Weight: 124kg
Refer to parts list for spare parts.

4. OPERATION



IMPORTANT: ensure you have read and understand all safety instructions before operating the table.

4.1. ASSEMBLY

4.1.1. Fit the handle (10) and foot pedal (6) as per the attached parts diagram.

4.2. BRAKE

4.2.1. Press the brake bar (7) down to apply the brake when the table is stationary to prevent sudden movement.

4.2.2. Lift the brake bar (7) to release the brake when the table is to be moved.

4.3. LIFTING

4.3.1. Before lifting, ensure the load is stable. If in doubt, secure the load to the table with suitable straps.

4.3.2. Press the foot pedal (6) repeatedly until the desired lifting height is reached. When lifting, **DO NOT** engage the lower mechanism (8).

4.3.3. Always engage the safety bars (9) to prevent unintended lowering. Failure to do so could result in serious injury/damage.

4.4. APPLYING THE SAFETY BARS

WARNING! DO NOT enter under this platform unless it is mechanically locked. **DO NOT** put hands or feet under the platform.

IMPORTANT: the safety bars (9) must be folded out after the platform is lifted to ensure that neither crushing nor shearing risk can arise from unintended lowering or malfunctions. Before lowering it must be back into its initial position. If the unit malfunctions, if possible, lower the lifting table carefully and activate the brake (7). Should it be not possible, remove the load on the table by using designated lifting equipment.

4.5. LOWERING

- 4.5.1. Disengage the safety bars (9).
- 4.5.2. Lower the load by pulling the lowering lever (8) until the desired or lowest position is reached.

4.6. MOVING

- 4.6.1. Ensure the table is in the lowest position, and the load is stable and secured with suitable straps.
- 4.6.2. Release the brake (7) and move the table by pushing or pulling the handle (10).
- 4.6.3. Keep watching the condition of the load. Stop operating the table if the load becomes unstable.
- 4.6.4. Apply the brake (7) once the table is positioned in the desired location.

4.7. MALFUNCTIONS & EMERGENCIES

- 4.7.1. If there are any malfunctions, the excess speed device has operated or the table is inoperative, please stop using the lifting table.
- 4.7.2. Place the table at a safe place. If possible/necessary activate the safety bars (9) against lowering.
- 4.7.3. Park the table on a safe area by activating the brake (7). Inform immediately the manager and/or call your service.
- 4.7.4. Start operating the table only if the reason for the malfunction was investigated and repaired.
- 4.7.5. In emergencies, stop lifting and lowering and keep safe distance. If possible activate the parking brake.
- 4.7.6. Follow appropriate workshop procedure for containing and cleaning up spillages.
NOTE: operators must refer to, and understand, the Material Safety Data Sheet (MSDS) regarding hazards, first aid and fire fighting measures.

5. MAINTENANCE

IMPORTANT: Only fully qualified personnel should attempt maintenance or repair of the unit hydraulic system.

Before operating the unit, check if all markings and decals are legible, in the right place, and not damaged. If necessary replace the decals. If major repair or replacement to a load supporting member of the unit has been carried out, the unit will need to be tested by an authorised service agent. If the unit has been stored for a prolonged period, it should be tested by an authorised service agent before re-use.

5.1. GENERAL MAINTENANCE

- WARNING! DO NOT** use the unit if it is believed to have been subjected to abnormal or shock load. Inspect and if necessary, take appropriate action.
- WARNING! DO NOT** use the table if any malfunction/fault is found. Hydraulic leakage can cause malfunctions and loss in lifting function. The oil cylinder is a sealed unit and must not be accessed. For service contact your authorised dealer.
- ✓ Apply the brakes when the unit is stationary, in storage or being transported.
- ✓ Periodically check the pump piston and piston rod for signs of corrosion. Clean exposed areas with a clean oiled cloth.
- ✓ Before servicing the table, remove the load, and during servicing use the safety bars (9).
- ✓ Replace or repair damaged parts. Use genuine parts from parts list only. Unauthorised parts may be dangerous and will invalidate the warranty.
- IMPORTANT:** only qualified personnel may adjust the pressure valve.
- ✓ If new castors are to be fitted, they should be of the same type as the originals and fitted as per the attached parts diagram.

5.2. DAILY INSPECTION

- ✓ Check for scratches, bending or cracking on the table.
- ✓ Check all safety decals are present and legible.
NOTE: The capacity sticker shall be clearly and permanently visible from the operating position.
- ✓ Check if there is any oil leakage from the cylinder.
- ✓ Check the vertical creep of table.
- ✓ Check the smooth movement of the wheels.
- ✓ Check the function of the brake.
- ✓ Check if all the bolts and nuts are tightened firmly.
- ✓ Check the lifting and lowering conditions by shifting the knob.
- ✓ Check if there are broken hoses or wires.

5.3. MONTHLY

- ✓ Lubricate with grease the rails where roller moves, also lubricate with grease the grease nipples.

5.4. EVERY SIX MONTHS

- ✓ Lubricate all the pivoting points and axles.

5.5. EVERY YEAR

- ✓ Replace the hydraulic oil with a good quality hydraulic oil, such as SEALEY HYDRAULIC JACK OIL.
- ✗ **DO NOT** use brake fluid.

5.6. REFILLING THE HYDRAULIC FLUID

- ✓ For refilling the hydraulic fluid, unscrew valve on the upper side of the cylinder. If you need to replace the hydraulic hoses, use authorised Sealey parts only. Wear appropriate PPE when handling hazardous substances. 4.1L of oil is required. The required hydraulic fluid- type is YA-N46, viscosity 41.4-50.6.

5.7. CLEANING

- ✓ Keep the unit clean and wipe off any oil or grease.
- ✓ Lubricate all moving parts with acid free oil.

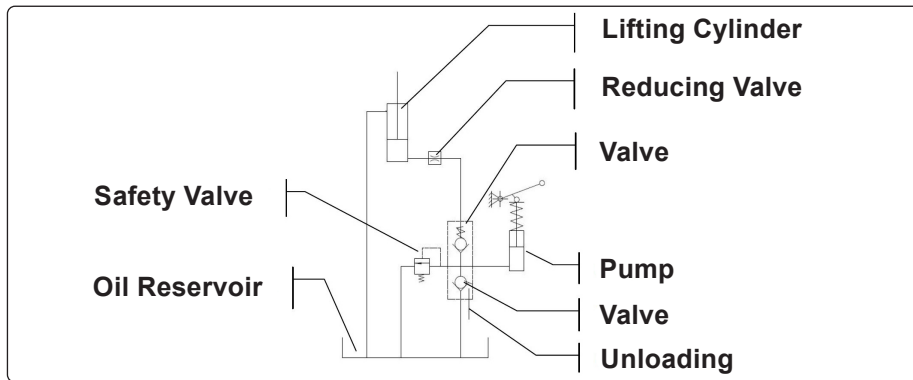
5.8. STORAGE

- ✓ Fully lower the platform when not in use.
- ✓ Store the unit in a safe, dry, childproof area, with an ambient temperature between +5°C and +40°C.
- ✓ Apply the brakes when storing the unit.

5.9. TRANSPORTING

- ✓ Remove the load, lower the table to the lowest position, and fix the table with dedicated lashing straps.
- ✓ Transport the unit with the brakes on, in its original packaging, if possible.
- ✗ **DO NOT** attempt to lift the unit by the handle. **DO NOT** lift manually. Lift by the lifting points using appropriate lifting devices and assistance.

5.10. HYDRAULIC CIRCUIT



IMPORTANT: NO RESPONSIBILITY IS ACCEPTED FOR INCORRECT USE OF THE UNIT.

Owing to their size and weight, hydraulic products should ideally be repaired by local service agents. We have service / repair agents in most parts of the UK. Before returning your product please call our technical helpline on 01284 757505 for advice and troubleshooting guidance. If the jack is under guarantee please contact your stockist.

6. TROUBLESHOOTING

PROBLEM	POSSIBLE CAUSE	POSSIBLE SOLUTION
Table does not rise.	Faulty foot pedal (6).	Check and if necessary repair or replace the mechanical connections of the lifting pedal.
	Oil leakage from cylinder (3).	Replace sealing.
	Faulty lifting mechanism (2).	Check and repair the lifting mechanism.
Vertical creep of table.	Oil leakage in the lowering valve.	Replace the lowering valve.
	Oil leakage from hydraulic circuit.	Check hydraulic circuit and repair.
Oil leakage from cylinder.	Faulty sealing.	Replace sealing.
Oil leakage from piping or joint.	Insufficient tightening.	Tighten joint again.
Oil leakage from air breathing.	Excessive quantity of oil.	Reduce oil quantity.
Table does not lower.	Lowering cable disconnected.	Connect and adjust the cable.
	Lowering turning handle disconnected.	Repair the turning handle.



ENVIRONMENT PROTECTION

Recycle unwanted materials instead of disposing of them as waste. All tools, accessories and packaging should be sorted, taken to a recycling centre and disposed of in a manner which is compatible with the environment. When the product becomes completely unserviceable and requires disposal, drain any fluids (if applicable) into approved containers and dispose of the product and fluids according to local regulations.



Note: It is our policy to continually improve products and as such we reserve the right to alter data, specifications and component parts without prior notice. Please note that other versions of this product are available. If you require documentation for alternative versions, please email or call our technical team on technical@sealey.co.uk or 01284 757505.

Important: No Liability is accepted for incorrect use of this product.

Warranty: Guarantee is 12 months from purchase date, proof of which is required for any claim.

Sealey Group, Kempson Way, Suffolk Business Park, Bury St Edmunds, Suffolk. IP32 7AR



01284 757500



sales@sealey.co.uk



www.sealey.co.uk