

# OIL FILTER CRUSHING UNIT MODEL: HFC06

Thank you for purchasing a Sealey product. Manufactured to a high standard this product will, if used according to these instructions and properly maintained, give you years of trouble free performance.

**IMPORTANT: PLEASE READ THESE INSTRUCTIONS CAREFULLY. NOTE THE SAFE OPERATIONAL REQUIREMENTS, WARNINGS AND CAUTIONS. USE THIS PRODUCT CORRECTLY AND WITH CARE FOR THE PURPOSE FOR WHICH IT IS INTENDED. FAILURE TO DO SO MAY CAUSE DAMAGE AND/OR PERSONAL INJURY AND WILL INVALIDATE THE WARRANTY. PLEASE KEEP INSTRUCTIONS SAFE FOR FUTURE USE.**

## 1. SAFETY INSTRUCTIONS

- ✓ Familiarise yourself with the applications, limitations and hazards of the crushing unit.
- ✓ Maintain the unit in good condition (use an authorised service agent).
- ✓ Replace or repair damaged parts. *Use recommended parts only. Unauthorised parts may be dangerous and will invalidate the warranty.*
- ✓ Keep the crushing unit clean for best and safest performance.
- ✓ Locate the crushing unit in an suitable working area. Keep the area clean, tidy and free from unrelated materials, and ensure there is adequate lighting.
- ☐ **WARNING!** Always wear approved eye or face protection when operating the crushing unit.
- ✓ Remove ill fitting clothing. Remove ties, watches, rings, and other loose jewellery, and contain long hair.
- ✓ Keep hands and body clear of the work table when operating the press.
- ✓ Maintain correct balance and footing. Ensure the floor is not slippery and wear non-slip shoes.
- ✓ Keep children and unauthorised persons away from the working area.
- ✗ **DO NOT** operate the crushing unit if any parts are missing as this may cause failure and/or possible personal injury.
- ✗ **DO NOT** use the crushing unit for a task it is not designed to perform.
- ✗ **DO NOT** operate the crushing unit when you are tired or under the influence of alcohol, drugs or intoxicating medication.
- ✓ When not in use release pressure from the pump and clean the crushing unit.

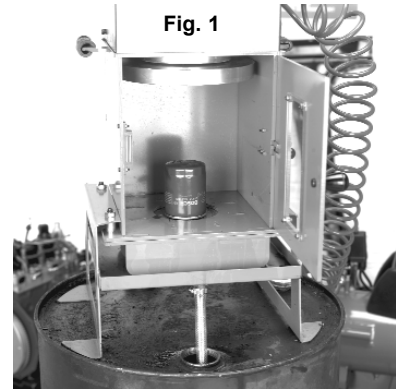
## 2. INTRODUCTION & SPECIFICATIONS

### 2.1. INTRODUCTION

2.1.1 The 12 ton oil filter crusher will reduce waste disposal costs and comply with local authority regulations for oil filter disposal. The model HFC06 is an air-operated hydraulic oil filter press unit with a safety lock-out device to prevent the door being opened during operation. The unit is mounted on top of a 48-gallon drum, to which the waste oil is transferred directly. Refer to Fig. 1.

### 2.2. SPECIFICATION

<b>Model:</b>	<b>HFC06</b>
Capacity:	12 ton
Air supply:	100 - 145psi
Air Consumption:	9.5cfm
Height:	850mm
Weight:	78kg



## 3. ASSEMBLY

### 3.1. ASSEMBLY.

▲ **DANGER!** For safety reasons, always ensure that the crusher unit is secure and will not cause either danger to the operator or damage to the crusher unit. Ensure that you have read and understood the safety instructions at Section 1.

**NOTE:** Oil filters should be drained before being crushed.

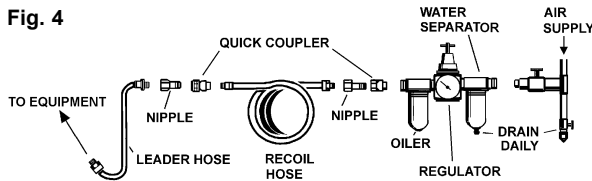
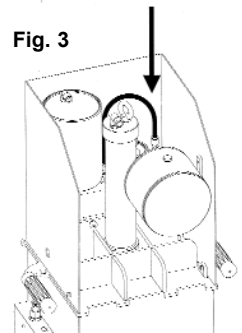
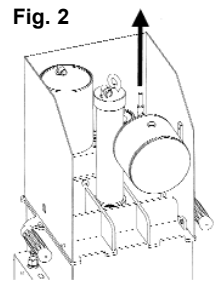
3.1.1 Before operating the the oil filter crusher, the unit is to be mounted on top of a 48-gallon drum, and a draining hose connected between the oil tray and the drum. Refer to Fig. 1.

3.1.2 Remove the coated rod **A** of Fig. 2.

3.1.3 Connect the **RED** plastic tubing which comes, disconnected, from the factory. Refer to Fig. 3.

▲ **IMPORTANT:** We recommend the use of an in-line filter, regulator and lubricator on the air supply of this product.

**NOTE: ALWAYS** keep the oil filter crusher piston retracted after use to avoid corrosion.



## 4. OPERATION

**NOTE:** A safety lock-out device has been installed prevent the door being opened during operation. Refer to Fig. 5.

- 4.1.1 Place the filter to be crushed in the centre of the unit and slowly operate the pump until the crushing plate is close to, or just touching, the filter. Check the alignment of the crushing unit with the plate. Refer to Fig. 6.
- 4.1.2 Apply increasing pressure until the filter is crushed and lying in the receptacle, as shown in Fig 7.
- 4.1.3 On completion of the work, release the press pressure and the piston and the crushing plate will retract automatically.
- 4.1.4 Ensure that crushed filters and residual oil and sludge are disposed of according to local regulations.

## 5. MAINTENANCE

**NOTE:** Repair and maintenance must be carried out by qualified personnel.

- 5.1 Ensure that the piston is fully retracted when replacing the pump oil.
- 5.2 The press will become inoperative if an excessive amount of oil is used. Use only Sealey hydraulic oil in the oil filter crusher.
- 5.3 Keep the oil filter crusher clean and protected from harsh environments.

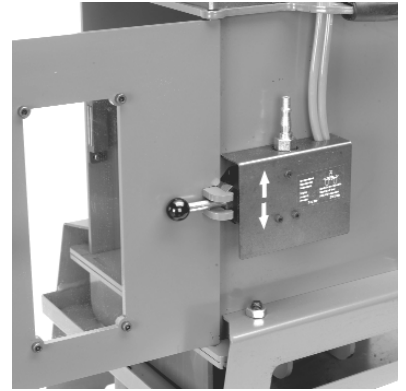


Fig. 5

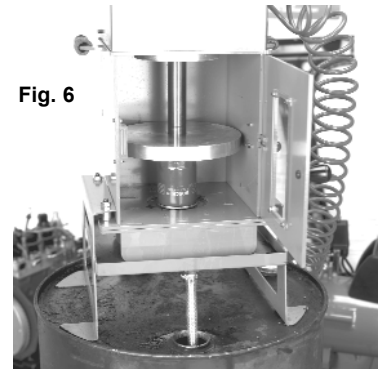


Fig. 6

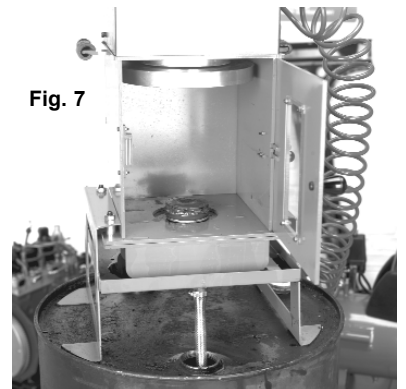


Fig. 7

## 6. DECLARATION OF CONFORMITY

**Declaration of Conformity** We, the sole importer into the UK, declare that the product listed below is in conformity with the following standards and directives.

**Oil Filter Crusher**  
**Model HFC06**  
93/68/EEC CE Marking Directive  
98/37/EC Machinery Directive



The construction files for these products are held by the Manufacturer and may be inspected, by a national authority, upon request to Jack Sealey Ltd.

Signed by Tim Thompson

1st December 2006

For Jack Sealey Ltd. Sole importer into the UK of Sealey Professional Tools.