



INSTRUCTIONS FOR: INVERTER GENERATOR 1000W MODEL: G1000E.V3

Thank you for purchasing a Sealey product. Manufactured to a high standard this product will, if used according to these instructions and properly maintained, give you years of trouble free performance.



IMPORTANT: PLEASE READ THESE INSTRUCTIONS CAREFULLY. NOTE THE SAFE OPERATIONAL REQUIREMENTS, WARNINGS, AND CAUTIONS. USE THIS PRODUCT CORRECTLY, AND WITH CARE FOR THE PURPOSE FOR WHICH IT IS INTENDED. FAILURE TO DO SO MAY CAUSE DAMAGE AND/OR PERSONAL INJURY AND WILL INVALIDATE THE WARRANTY.

1. SAFETY INSTRUCTIONS

- WARNING! Ensure any Health & Safety, Government, or local authority regulations are adhered to when using this equipment.**
- ✓ Familiarise yourself with the application and limitations, as well as the potential hazards of the generator.
- ✓ Maintain the generator in good condition (use an authorised service agent). Replace or repair damaged parts. Use genuine parts only. Unauthorised parts may be dangerous and will invalidate the warranty.
- ✓ This generator is designed and manufactured for specific applications. Do not attempt to modify the unit or use it for any application for which it is not designed. If you have any questions regarding the application of the unit please contact your local Sealey dealer.
- ✓ Operate the generator only on level surfaces (maximum allowable tilt is 10°) and where it will not be exposed to excessive moisture, dirt or corrosive vapours or be in the proximity of combustible material (flammable liquids, solids or gases).
- ✓ Remove ill fitting clothing, ties, watches, rings and other loose jewellery and contain long hair. Wear appropriate protective clothing.
- ✓ Keep non-essential persons away from the working area.
- ✗ **DO NOT** use the generator for any purpose other than that for which it is designed.
- ✗ **DO NOT** operate the generator if any parts are missing or damaged, as this may cause failure and/or personal injury.
- ✗ **DO NOT** over-fill fuel tank. Always leave some room for fuel to expand.
- ✗ **DO NOT** operate in the rain.
- ✗ **DO NOT** operate the generator when you are tired or under the influence of alcohol, drugs or intoxicating medication.
- ✗ **DO NOT** store generator with fuel in tank where petrol vapours might reach an open flame or spark.
- WARNING! DO NOT exceed the Wattage/Amperage capacity of the generator.** Add rated wattage of all devices intended for connection at any one time. The total must not exceed rated wattage of generator (see specification). In most cases the rated wattage of an electrical device can be found on the nameplate. If the nameplate only gives voltage and amperage, multiply the two to give rated wattage (Volts x Amps = Watts)
- WARNING!** Generator exhaust gases contain deadly carbon monoxide which must not be inhaled. Always allow sufficient ventilation.
- WARNING!** If you decide to use an Earth Leakage Circuit Breaker (also referred to as an RCD or Ground Fault Circuit Interrupter), it is imperative that the neutral end of the power winding is connected to the frame of the generator set and that the earth lug on the frame is connected with a low impedance connector to the local earth via an earth spike or local protective earth conductor. This connection should only be attempted by a qualified electrician, after first having consulted your local dealer.
- WARNING!** Petrol is highly flammable and petrol vapour is explosive. Do not permit smoking, naked flames, sparks or heat in the vicinity while handling petrol. Avoid spilling petrol onto a hot engine. Comply with all laws regulating storage and handling of fuels.
- WARNING!** NEVER refuel when the engine is running or when the engine is hot. Allow some time for the engine to cool down.
- WARNING! Never start or stop the generator while electrical loads are connected and switched on. Start the engine, let it stabilise, then connect the electrical load. To stop engine, disconnect the electrical load and let engine stabilise before switching off.**
- WARNING! Do not use worn, bare, frayed or otherwise damaged electrical cables with the generator. To do so may result in electric shock.**
- ▲ **DANGER!** This generator is designed for outdoor use only. To use the generator inside any building or enclosure, including the generator compartment of a caravan, may result in fire or an explosion. No user-performed modifications, including venting of the exhaust and/or cooling ventilation, will eliminate the danger.
- ▲ **DANGER! If this unit is used for back-up power in the event of a commercial power failure, the following steps must be taken. The connections from standby power to a buildings electrical system must be carried out by a qualified electrician complying with all laws and regulations. Before connecting the generator to the electrical system, open the main circuit breaker to isolate the generator and system from the commercial electric supply. Failure to do this may result in damage to the generator and may result in serious injury or fatality, due to a back-feed of electrical energy.**
- ▲ **DANGER!** The generator produces a very powerful voltage that can cause a severe electrical shock. Avoid contact with bare wires, terminals etc. Never allow any unqualified person to operate or service the generator.
- ▲ **DANGER! Do not tamper with the engine governed speed setting. Higher operating speeds are dangerous and increase the risk of personal injury and/or equipment damage. The generator supplies the correct rated frequencies and voltages only when running at the correct governed speed. Incorrect frequency and/or voltage can damage some connected electrical loads. Operating at excessively low speeds may result in shortened engine life. Over-speeding will invalidate the warranty.**

2. INTRODUCTION & SPECIFICATION

Digital inverter technology provides stable 'clean' output making the unit suitable for use with sensitive electrical equipment such as computers. Smart throttle sensor automatically adjusts the engine speed to precisely match the load, which allows the generator to run quieter whilst increasing fuel efficiency and lengthening engine life. Fitted with 3-pin socket and 12V battery charging outlet. Low oil cut-out and overload protection.

Motor Power:	1.3kW/1.7hp	Fuel Tank Capacity:	1.6ltr
Motor Type:	4-Stroke	Fuel:	Petrol Unleaded 95 RON
Output:	230V - 50Hz/12V DC	Max Running Time:	4hr
Current Rating:	3.7A/8A	Noise Rating:	60dB.A
Cont. Power Rating:850W	Dry Weight:	14.5kg
Max Power Rating:	1000W	Dimensions (L x W x H):	476 x 278 x 389mm

3. OPERATING INSTRUCTIONS

PRE-OPERATIONAL CHECKS

- ❑ **WARNING!** Before use, ensure you read, understand and comply with the safety instructions in this document. Ensure you fully understand the application and limitations, as well as the potential hazards, of the generator.
- ❑ **WARNING!** Never connect the generating set earth lead to pipes. Pipes may carry inflammable substances such as gas or domestic fuel and there is a risk of fire or explosion in the event of a short circuit.
- ❑ **WARNING!** Never run the engine without the air filter fitted.
- ✓ Check the air filter to ensure it is clean and in good condition.
- ✓ Check that the generator is standing on a flat, horizontal surface.

3.1 FILLING WITH FUEL AND OIL

- ❑ **WARNING!** NEVER refuel when the engine is running or when the engine is hot. Allow the engine time to cool down.
- ❑ **WARNING!** Petrol is highly flammable and petrol vapour is explosive.
- 3.1.1 Ensure all electrical loads are disconnected.
- 3.1.2 Ensure the area around the fuel cap is clean.
- 3.1.3 Remove the fuel cap (fig.1), check the level of the fuel and refill with the recommended fuel if necessary. Use unleaded petrol (95RON) to minimise combustion chamber deposits.
- 3.1.4 Do not over-fill the fuel tank. Always leave some room for the fuel to expand.
- 3.1.5 Visually inspect the oil level regularly. Take out the oil filler dipstick, clean and re-insert in the filler hole but do not screw it in. If oil level is below the end of the dipstick, refill with recommended oil, up to the top of the filler neck (fig.3).
- 3.1.6 Use only high-detergent, premium quality 4-stroke engine oil.

Note: The Low Oil Alarm system will automatically stop the engine before the oil level falls below the safe limit, but regular checking will avoid inconvenient shutdowns.



fig.1

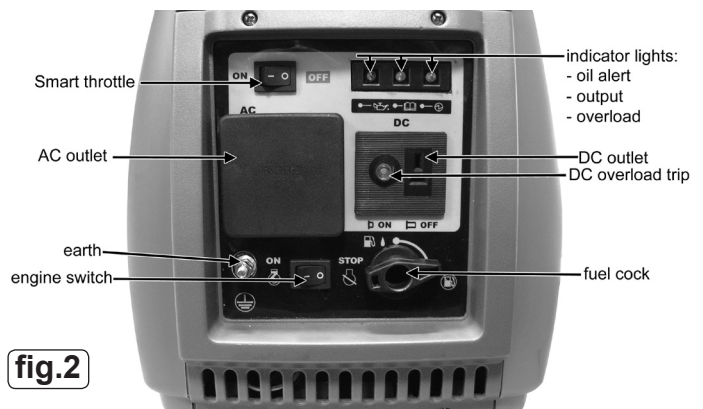


fig.2

3.2 STARTING THE GENERATOR

- ❑ **WARNING!** Ensure all appliances are disconnected from the AC/DC terminals.
- 3.2.1 Ensure you have performed all actions in 3.1 above.
- 3.2.2 Turn the fuel cap lever clockwise to the OFF position (fig.1) and pump the integrated plunger this will pressurise the fuel to help start the generator.
- 3.2.3 Turn the engine switch to the ON position (fig.2).
- 3.2.4 Turn the fuel cock anti-clockwise to the ON position (fig.2).
- 3.2.5 Move the choke lever to the ON position (fig.4).

Note: Do not use the choke when the engine is warm or the air temperature is high.

Note: Ensure there is sufficient free area around you to prevent personal injury when pulling on the starter grip.

- 3.2.6 Pull the starter grip until resistance is felt, then pull the starter grip briskly upwards and engine should start running. Repeat if necessary. Do not allow the starter grip to snap back, but return it slowly.
- 3.2.7 When the engine is started turn the fuel pressure switch anti-clockwise to the ON position to release the pressure in the fuel tank. **This must be done to avoid damage to the generator.**
- 3.2.8 After the engine has warmed up, move the choke lever to the OFF position (fig.4).
- 3.2.9 If the engine stops and will not restart, check the engine oil level, and top up if necessary, before fault-finding in other areas.
- 3.2.10 If it still will not start, refer to 'Trouble-Shooting' section. If necessary, contact your authorised Sealey service agent.

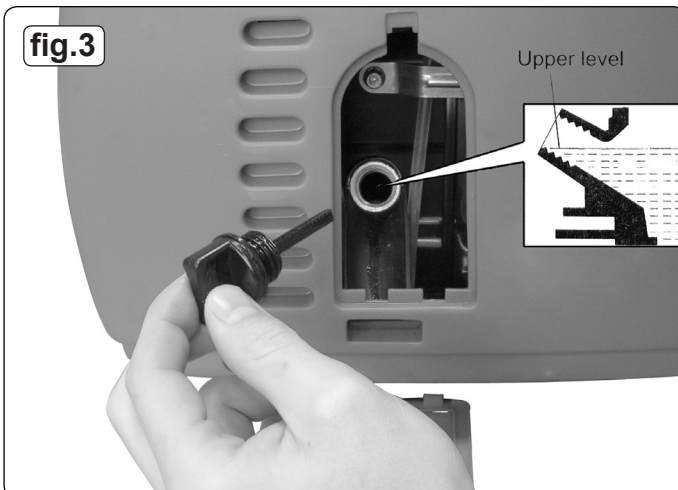


fig.3

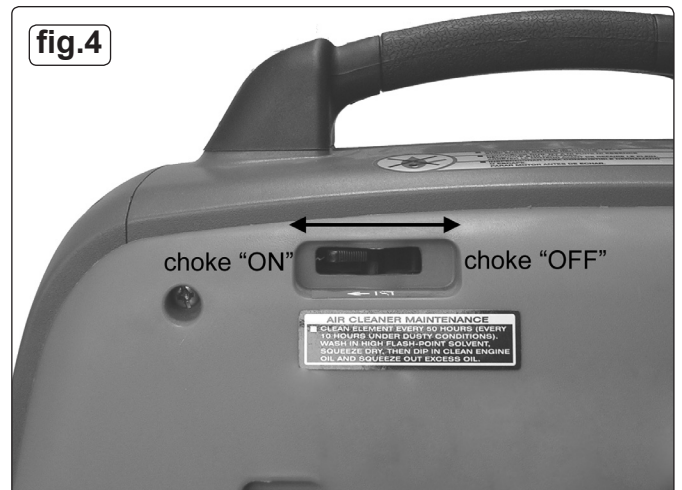


fig.4

Note: Smart Throttle Switch (fig.2) - This should be set to ON "I" in normal use. The engine will idle when electrical appliances are not connected and will speed up when electrical appliances are connected.

When high electrical loads are connected simultaneously, turn the Smart Throttle switch to the OFF "0" position.

In DC applications, turn the Smart Throttle switch to the OFF "0" position

Note: To prevent electrical shock from faulty appliances, the generator should be earthed by connecting a length of heavy cable from the generator's earth terminal (fig.2) to a suitable earthing point.

3.3 USING THE GENERATOR - AC APPLICATIONS

WARNING! Do not exceed the wattage capacity of the generator.

3.3.1 Start the engine and ensure the green output indicator light illuminates (fig.2).

3.3.2 Connect the equipment to the generator socket and switch the AC/DC switch to the ON position.

3.3.3 The output indicator light will remain on during normal operation. If the generator overloads, i.e. in excess of 1kVA or there is a short in the connected appliance, the red overload indicator light will illuminate (fig.2) and current to the connected appliance will be cut off.

3.3.4 If the red overload indicator light illuminates, stop the engine at once and investigate the source of the overloading.

Note: When an electric motor is started, both the overload indicator light and the output indicator light may come ON simultaneously. If the overload indicator extinguishes after approximately four seconds, then this is normal.

3.4 USING THE GENERATOR - DC APPLICATIONS - CHARGING A CAR BATTERY

WARNING! Do not exceed the wattage capacity of the generator.

Note: The DC socket can be used whilst the AC power is in use. If using both simultaneously, do not exceed the total power for both AC and DC. When using DC application only - switch the AC/DC switch to the OFF position.

The DC circuit has an overload protector that may trip in certain circumstances. If this happens wait for a minute and then push in the protector reset button (fig.2) to resume operation.

Note: In DC operation, turn the Smart Throttle switch to the OFF "0" position.

3.4.1 Connect the supplied charging cables to the DC socket of the generator and then to the battery's terminals ensuring that the correct polarity is observed.

Note: When charging a battery installed in a vehicle, disconnect the vehicle's battery earthing cable. Reconnect the earthing cable after charging has been completed. Care should be taken when charging batteries, please refer to the battery manufacturer's guidelines.

3.4.2 Start the generator's engine to charge battery. When charged sufficiently, stop generator and disconnect all cables.

3.5 STOPPING THE ENGINE

3.5.1 Switch off the connected equipment and disconnect the equipment plug.

3.5.2 Turn the engine switch to the OFF "0" position.

4. MAINTENANCE

4.1 CHANGING THE ENGINE OIL

After first 10 hours, then every 100 hours.

4.1.1 Remove the oil maintenance cover (fig.1).

4.1.2 Remove the oil filler cap.

4.1.3 Thoroughly drain the used oil into a container by tipping the generator.

4.1.4 Refill the oil reservoir with the recommended oil and check the oil level (fig.3).

4.1.5 Replace the oil filler cap and then replace the front maintenance cover and tighten the retaining screw.

Note: Engine oil capacity is 0.25 litre.

4.2 AIR FILTER CLEANING

Every 50 hours.

4.2.1 Loosen the retaining screws and remove the side maintenance cover (fig.1).

4.2.2 Unscrew the securing screw in the air filter cover and remove the air filter cover (fig.5).

4.2.3 Inspect and replace the filter if necessary, or wash the filter in a non-flammable or high flash point solvent and dry it thoroughly.

4.2.4 Soak the element in clean engine oil and then squeeze out the excess oil.

4.2.5 Replace the air filter.

4.2.6 Replace the cover and secure with screw.

4.2.7 Replace the side maintenance cover and tighten the retaining screw.

4.3 SPARK PLUG CLEANING

Every 100 hours.

4.3.1 Remove the spark plug maintenance cover. (fig.1).

4.3.2 Remove the spark plug HT cap and clean away any dirt etc. from the spark plug area.

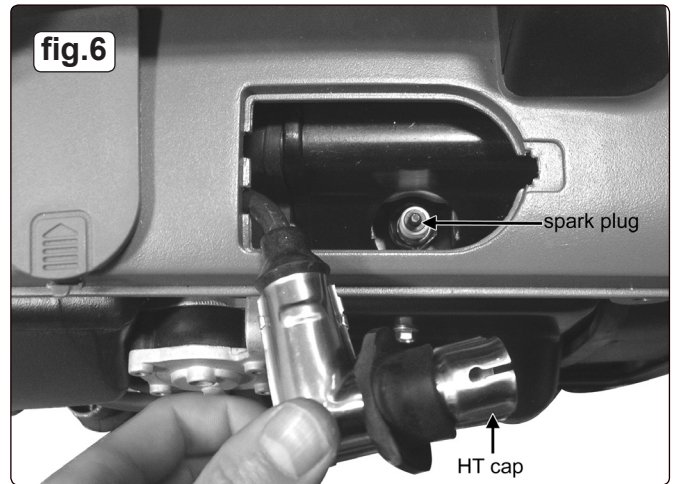
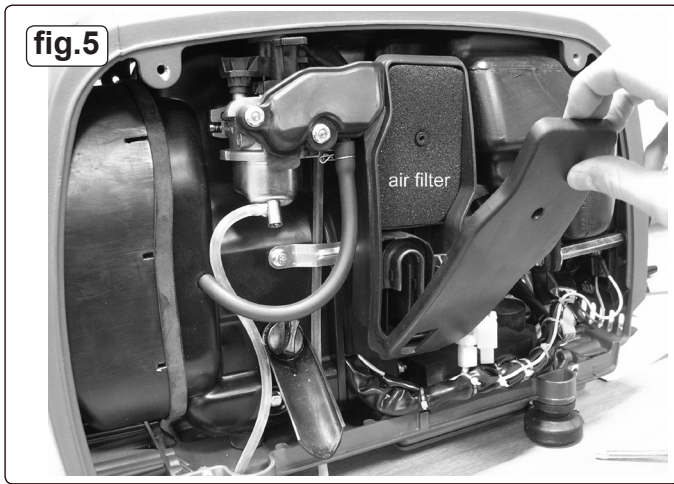
4.3.3 Remove the spark plug (fig.6).

4.3.4 Inspect the spark plug, renew if the insulator is cracked. Carefully clean the spark plug with a wire brush if it is to be reused.

4.3.5 Check the plug gap with a feeler gauge, the gap should be between 0.6-0.7mm (0.024-0.028in). Adjust if necessary by carefully bending the electrode.

4.3.6 Install spark plug by hand initially, to avoid cross-threading. Finally tighten with the wrench (1/2 turn for a new spark plug and 1/8-1/4 turn for a used one).

4.3.7 Reconnect spark plug HT cap and replace the spark plug maintenance cover.



5. TRANSPORTATION AND STORAGE

- ❑ **WARNING!** Petrol is highly flammable and petrol vapour is explosive. Do not permit smoking, naked flames, sparks or heat in the vicinity while handling petrol. Avoid spilling petrol onto a hot engine. Comply with all laws regulating storage and handling of fuels.

5.1 TRANSPORTATION

- 5.1.1 Do not overfill the fuel tank.
 5.1.2 Do not operate the generator whilst it is on a vehicle. Remove it from the vehicle and operate it in a well-ventilated place.
 5.1.3 To prevent fuel spillage during transportation, it should be secured in its normal, upright position with the fuel cock to OFF.

5.2 STORAGE

- 5.2.1 Prior to storing the generator for a prolonged period, ensure that the storage area is free of excessive humidity and dust.
 5.2.2 Completely drain the fuel from the tank into an approved container.

6. TROUBLESHOOTING

PROBLEM	CAUSE	ACTION
Engine will not start.	No fuel in tank. Oil not filled to correct level. Engine run switch not turned on. Choke not set correctly. Spark plug fouled. Air cleaner blocked.	Fill fuel tank. Fill oil to correct level. Set engine control correctly. Set choke control correctly. Clean/replace spark plug. Clean/replace air filter.
Engine does not run smoothly.	Air cleaner blocked. Spark plug fouled. Choke set incorrectly. Dirty or stale fuel.	Clean/replace air filter. Clean/replace spark plug. Set choke control correctly. Drain and replace fuel.

NOTE: It is our policy to continually improve products and as such we reserve the right to alter data, specifications and component parts without prior notice.

IMPORTANT: No liability is accepted for incorrect use of this product.

WARRANTY: Guarantee is 12 months from purchase date, proof of which will be required for any claim.

INFORMATION: For a copy of our latest catalogue and promotions call us on 01284 757525 and leave your full name and address, including postcode.



Sole UK Distributor, Sealey Group,
 Kempson Way, Suffolk Business Park,
 Bury St. Edmunds, Suffolk,
 IP32 7AR

☎ 01284 757500

🌐 www.sealey.co.uk

📠 01284 703534

✉ sales@sealey.co.uk