

Thank you for purchasing a Sealey product. Manufactured to a high standard this product will, if used according to these instructions and properly maintained, give you years of trouble free performance.



IMPORTANT: PLEASE READ THESE INSTRUCTIONS CAREFULLY. NOTE THE SAFE OPERATIONAL REQUIREMENTS, WARNINGS AND CAUTIONS. USE THIS PRODUCT CORRECTLY AND WITH CARE FOR THE PURPOSE FOR WHICH IT IS INTENDED. FAILURE TO DO SO MAY CAUSE DAMAGE OR PERSONAL INJURY, AND WILL INVALIDATE THE WARRANTY. PLEASE KEEP INSTRUCTIONS SAFE FOR FUTURE USE.

1. SAFETY INSTRUCTIONS

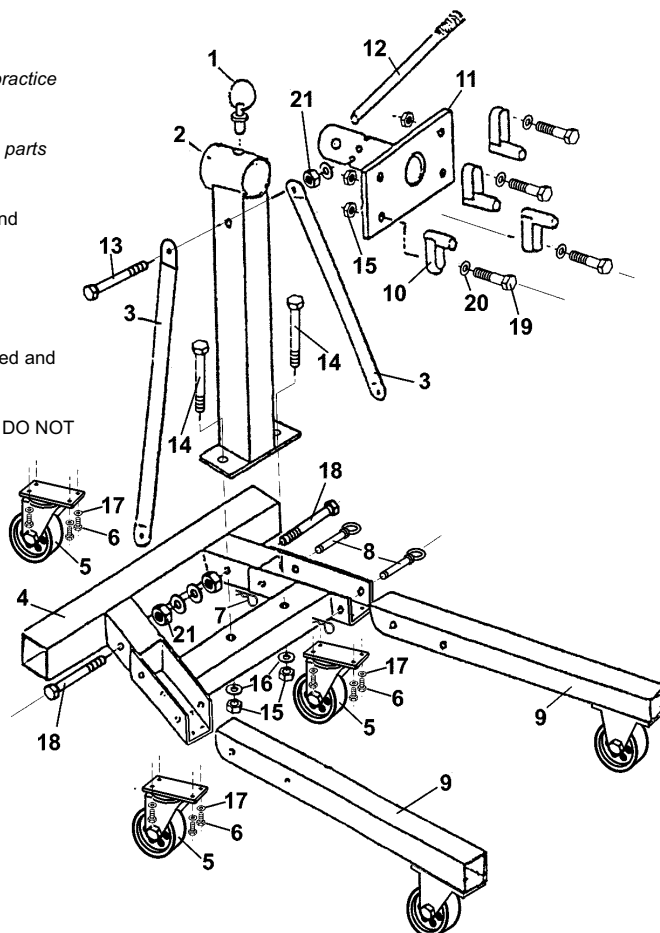
- ❑ **WARNING!** Ensure all health and safety, local authority, and general workshop practice regulations are strictly adhered to when using this equipment.
- ✓ Before using the stand ensure it is in sound condition, and good working order.
- ✓ Replace or repair damaged parts. Use recommended parts only. Non authorised parts may be dangerous and will invalidate the warranty.
- ✓ Keep the stand clean for best and safest performance.
- ✓ Locate the stand in an adequate working area for its function, keep area clean and tidy and free from unrelated materials, and ensure there is adequate lighting.
- ✓ Use on a firm, level surface capable of sustaining the stand and the load.
- ✓ Maintain correct balance and footing. Ensure the floor is not slippery and wear non slip shoes.
- ✓ Ensure all non essential persons keep a safe distance whilst the stand is in use.
- ✓ Lock mounting plate in position before fixing a load, and ensure the load is centred and securely mounted on the locking plate.
- ✓ Ensure the Stand and the load are stable.
- ✓ To move a loaded stand, push it from the load side, above the two fixed wheels. DO NOT move the stand from the castor end and never pull the stand towards yourself. Also ensure surface over which the stand it to travel is strong enough to take the stand and load and that it is not cracked, uneven or obstructed.
- ✗ DO NOT operate unit if damaged.
- ✗ DO NOT allow untrained persons to operate the stand.
- ✗ DO NOT exceed the rated capacity of 900kg.
- ▲ **DANGER:** DO NOT work under an engine mounted on the Stand.
- ✗ DO NOT use the Stand for purposes other than which it is designed.

2. SPECIFICATION

Max capacity	900kg	Height	950mm
Width	900mm	Height (legs up)	1020mm
Length	1080mm	Weight	42kg

3. ASSEMBLY & PARTS LIST

- 3.1. Bolt the three castor wheels to the main frame (4) using M8 x10mm bolts (6) and lock washers (17).
- 3.2. Assemble the legs (9) to the frame using the 4 ringed pins provided (8). Lay each leg into the open channel and insert the first pin into the hole nearest the back of the frame. This will be the folding leg pivot. Retain the pin with an 'R' clip (7). Lock the leg in the down position by inserting a second pin into the hole nearest the open end of the channel and retain it with a 'R' clip.
- 3.3. Bolt the main upright (2) to the cross member between the open channels using two M14 bolts (14). Fix with the nuts (15) and washers (16) provided but leave hand tight at this stage.
- 3.4. Take the two support struts (3) and loosely bolt them to the top of the main upright using an M16 100mm bolt (13). Insert two M16 bolts (18) through the angled parts of the main base in the holes adjacent to the rear square section ensuring that the bolt heads are on the outside of the frame. Slide the bottom of each support strut over the end of each bolt in turn and secure with the nuts (21) and washers provided. Tighten all bolts holding the main upright and struts.
- 3.5. Take the engine mounting plate (11 turning plate) and insert it through the tube at the top of the main upright. Rotate the plate till one of the holes in the inner tube is aligned with a hole in the outer tube and insert the ringed pin (1).
- 3.6. Take the handle (12) and insert it through the hole in the turning plate tube which protrudes from the top off the main upright.
- 3.7. Attach the adjustable mountings to the turning plate using 65mm M14 bolts (19) ensuring that the washer (20) is directly under the head of the bolt.
- 3.8. To fold up the legs remove the spring clips from the ring headed pins closest to the fixed wheels and pull out the pins. Fold the legs up. Always retain the legs in the upright position by reinserting the pins through the holes in the frame directly in front of the folded legs. Retain pins with clips.



PARTS LIST

ITEM	PART NO	DESCRIPTION
1	ES900F.01	PIN
2	ES900F.02	VERTICAL PILLAR
3	ES900F.03	SUPPORT
4	ES900F.04	BASE FRAME
5	ES900F.05	3-1/2" CASTOR
6	ES900F.06	BOLT M8 X 10
7	ES900F.07	SPRING PIN
8	ES900F.08	BOLT (RING HEADED PIN)
9	ES900F.09	LEGS
10	ES900F.10	SHIFTING STAND
11	ES900F.11	TURNING PLATE
12	ES900F.12	HANDLE
13	ES900F.13	BOLT M16 X 100
14	ES900F.14	BOLT M14 X 85
15	ES900F.15	NUT M14
16	ES900F.16	SPACER diameter 14mm
17	ES900F.17	WASHER diameter 8mm
18	ES900F.18	BOLT M16 X 90
19	ES900F.19	BOLT M14 X 65
20	ES900F.20	WASHER diameter 16mm
21	ES900F.21	NUT M16

NOTE: It is our policy to continually improve products and as such we reserve the right to alter data, specifications and component parts without prior notice.

IMPORTANT: No liability is accepted for incorrect use of this equipment

WARRANTY: Guarantee is 12 months from purchase date, proof of which will be required for any claim.

INFORMATION: Call us for a copy of our latest catalogue on 01284 757525 and leave your full name and address including your postcode.

