



# INSTRUCTIONS FOR 750KG EXHAUST SUPPORT STAND MODEL NO: ES750.V2

Thank you for purchasing a Sealey product. Manufactured to a high standard, this product will, if used according to these instructions, and properly maintained, give you years of trouble free performance.

**IMPORTANT:** PLEASE READ THESE INSTRUCTIONS CAREFULLY. NOTE THE SAFE OPERATIONAL REQUIREMENTS, WARNINGS & CAUTIONS. USE THE PRODUCT CORRECTLY AND WITH CARE FOR THE PURPOSE FOR WHICH IT IS INTENDED. FAILURE TO DO SO MAY CAUSE DAMAGE AND/OR PERSONAL INJURY AND WILL INVALIDATE THE WARRANTY. KEEP THESE INSTRUCTIONS SAFE FOR FUTURE USE.



Refer to  
instruction  
manual

## 1. SAFETY

- ✓ Ensure the exhaust stand is in good order and condition.
- ✗ **DO NOT** use if damaged.
- ✓ Ensure you familiarise yourself with the product before use.
- ✓ Ensure that vehicle is properly supported with handbrake on.
- ✗ **DO NOT** use on soft ground or tarmacadam. Use on concrete only.
- ✗ **DO NOT attempt to support more than 750kg.**
- ✗ **DO NOT use this product as an axle stand.**
- ✗ **DO NOT** attempt to use this product for a task it is not designed to perform.

## 2. INTRODUCTION

Screw adjustment with easy-to-use spinner nut and ball bearing thrust race for smooth operation. Removable base for easier storage. Adjustable over 670mm.

## 3. SPECIFICATION

Model no: ..... ES750.V2  
Capacity: .....750kg  
Min height:..... 1390mm  
Max. height:..... 2060mm

## 4. ASSEMBLY

- 4.1. Unpack the product and check contents. Should there be any damaged or missing parts contact your supplier immediately.
- 4.2. Screw the base tube (1) fully into the base (2).
- 4.3. Insert the main column (3) into the base tube (1) and align the holes in each.
- 4.4. Slide a washer (5) over the fixing rod (4) and insert the fixing rod through the column and the base tube to join them together. Place another washer (5) over the protruding end of the fixing rod and retain the whole assembly by inserting the 'R' pin (6) through the end of the fixing rod.
- 4.5. Thread the plain end of the grub screw (7) into the threaded hole in the top of the column (3) so that only the plain end of the screw protrudes into the inside of the column. Lock the grub screw in place with the locking nut (8).
- 4.6. Thread the handle (10) onto the top of the threaded rod and wind it clockwise, a short distance down the rod.
- 4.7. Place the saddle (12) over the top of the threaded rod (11) and retain it by screwing in the fixing bolt (13).
- 4.8. Place the bearing assembly (14) on top of the column (3) and hold it there.
- 4.9. Insert the bottom end of the threaded rod through the bearing and into the top of the column (3) ensuring that the keyway in the threaded rod is aligned with the plain end of the grub screw (7). Lower the threaded rod (11) into the column (3) until it stops.
- 4.10. The exhaust stand is now ready for use.

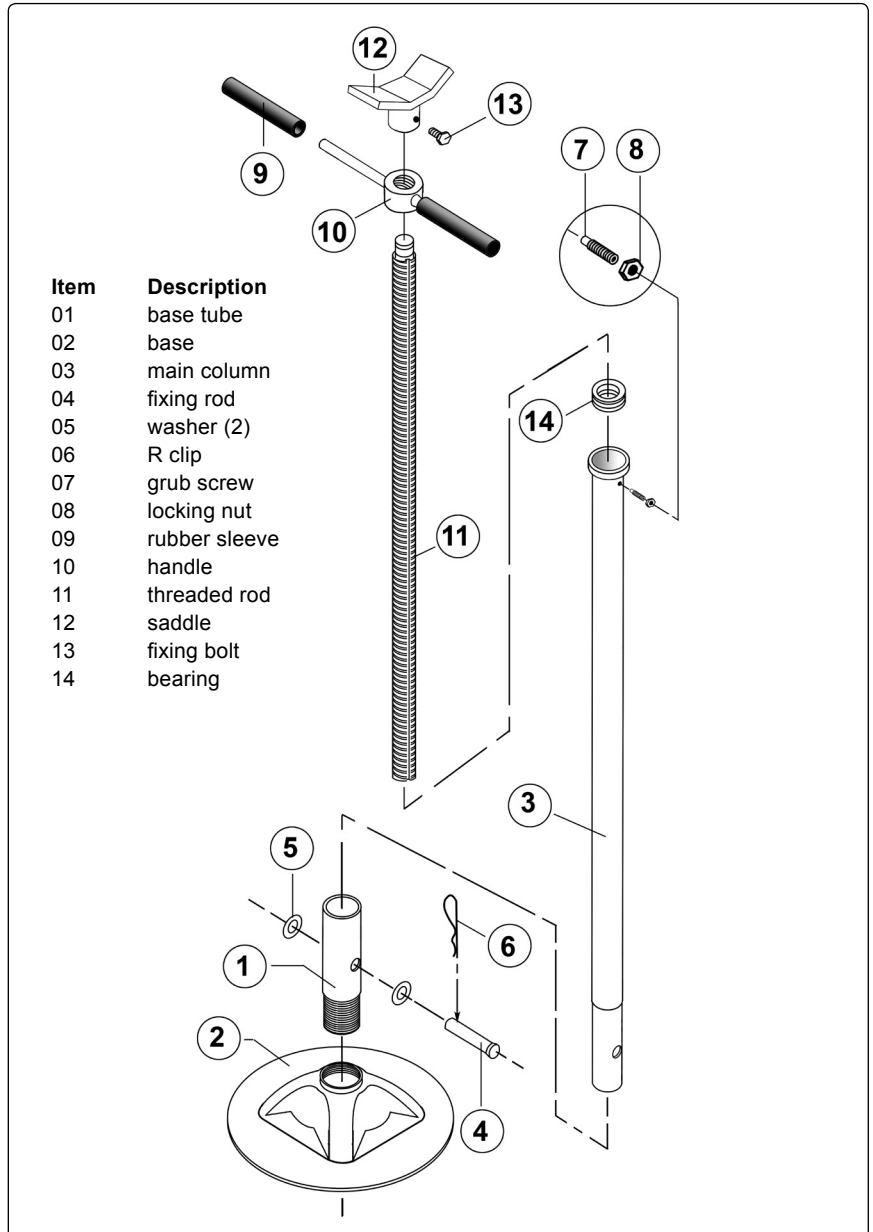
## 5. OPERATION

- WARNING! Before use ensure you have read, understood and apply section 1 "Safety Instructions".**
- 5.1. **POSITIONING STAND BENEATH EXHAUST SYSTEM.**
  - WARNING!** Before use ensure the exhaust weight and size does not exceed the capacity of the stand.
  - WARNING!** Ensure the vehicle from which the exhaust is to be removed is correctly positioned, handbrake applied, and raised to allow the exhaust stand to be positioned correctly.
- 5.1.1. Ensure there are no other persons around or under the vehicle.
- 5.1.2. Ensure saddle is in its lowest position and centrally position stand beneath vehicle's exhaust.
- 5.1.3. Rotate handle (10) in a clockwise direction to raise the saddle.
- 5.1.4. When saddle is just beneath the exhaust re-adjust alignment if necessary to centralise the saddle.
- 5.2. **LIFTING/LOWERING THE EXHAUST.**
  - WARNING!** Ensure the load is central and stable on the stand saddle and load is fixed in place before attempting to lift or lower.
- 5.2.1. Rotate the handle in an anti-clockwise direction to lower the saddle, rotate the handle in a clockwise direction to lift the saddle.

- ▲ **DANGER! DO NOT** use on tarmacadam, or any soft surface as stand may sink or topple. Serious personal and/or fatal injury may result.
- ▲ **DANGER!** If stand tips or leans, **STOP WHAT YOU ARE DOING. MOVE QUICKLY TO A SAFE DISTANCE. DO NOT TRY TO HOLD OR STEADY STAND.**

## 6. MAINTENANCE

- 6.1. When not in use, lower the saddle so that the threaded rod is all within the column and thus protected from corrosion.
  - 6.2. Before each use, ensure components are in good working order. If any suspect item is found remove stand from service and take necessary action to remedy the problem.
  - \* **DO NOT** use the stand if you believe it has been subjected to an abnormal load or shock load.
  - 6.3. Lubricate all moving parts on a regular basis.
  - 6.4. Periodically check the stand for signs of corrosion. Clean exposed areas with a clean oiled cloth.
- IMPORTANT: All other maintenance and repair must only be undertaken by fully qualified personnel. Contact your local authorised service agent.**
- IMPORTANT: NO RESPONSIBILITY IS ACCEPTED FOR INCORRECT USE OF THE STAND.**



### Environmental Protection

Recycle unwanted materials instead of disposing of them as waste. All tools, accessories and packaging should be sorted, taken to a recycling centre and disposed of in a manner which is compatible with the environment. When the product becomes completely unserviceable and requires disposal, drain off any fluids (if applicable) into approved containers and dispose of the product and the fluids according to local regulations.

**NOTE:** It is our policy to continually improve products and as such we reserve the right to alter data, specifications and component parts without prior notice.

**IMPORTANT:** No liability is accepted for incorrect use of this product.

**WARRANTY:** Guarantee is 12 months from purchase date, proof of which will be required for any claim.



Sole UK Distributor, Sealey Group.  
Kempson Way, Suffolk Business Park,  
Bury St. Edmunds, Suffolk.  
IP32 7AR



01284 757500



01284 703534



[www.sealey.co.uk](http://www.sealey.co.uk)



[sales@sealey.co.uk](mailto:sales@sealey.co.uk)