

Thank you for purchasing a Sealey product. Manufactured to a high standard this product will, if used according to these instructions and properly maintained, give you years of trouble free performance.



IMPORTANT: PLEASE READ THESE INSTRUCTIONS CAREFULLY. NOTE THE SAFE OPERATIONAL REQUIREMENTS, WARNINGS, AND CAUTIONS. USE THIS PRODUCT CORRECTLY, AND WITH CARE FOR THE PURPOSE FOR WHICH IT IS INTENDED. FAILURE TO DO SO MAY CAUSE DAMAGE AND/OR PERSONAL INJURY AND WILL INVALIDATE THE WARRANTY.

1. SAFETY INSTRUCTIONS

1.1 ELECTRICAL SAFETY

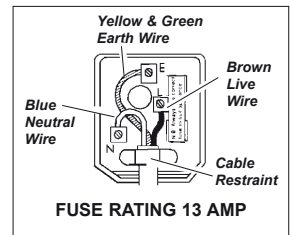
WARNING! It is the responsibility of the owner and the operator to read, understand and comply with the following:

You must check all electrical products, before use, to ensure that they are safe. You must inspect power cables, plugs, sockets and any other connectors for wear or damage. You must ensure that the risk of electric shock is minimised by the installation of appropriate safety devices. A Residual Current Circuit Breaker (RCCB) should be incorporated in the main distribution board. We also recommend that a Residual Current Device (RCD) is used. It is particularly important to use an RCD with portable products that are plugged into a supply which is not protected by an RCCB. If in any doubt consult a qualified electrician.

You may obtain a Residual Current Device by contacting your Sealey dealer.

You must also read and understand the following instructions concerning electrical safety.

- 1.1.1 The Electricity at Work Act 1989 requires that all portable electrical appliances, if used on business premises, are tested by a qualified electrician, using a Portable Appliance Tester (PAT), at least once a year.
- 1.1.2 The Health & Safety at Work Act 1974 makes owners of electrical appliances responsible for the safe condition of those appliances and the safety of the appliance operators. If in any doubt about electrical safety, contact a qualified electrician.
- 1.1.3 Ensure that the insulation on all cables and on the appliance is safe before connecting it to the power supply. See 1.1.1 and 1.1.2 and use a Portable Appliance Tester.
- 1.1.4 Ensure that cables are always protected against short circuit and overload.
- 1.1.5 Regularly inspect power supply cables and plugs for wear or damage and check all connections to ensure that none is loose.
- 1.1.6 Important: Ensure that the voltage marked on the appliance matches the power supply to be used and that the plug is fitted with the correct fuse - see fuse rating at right.
- 1.1.7 **DO NOT** pull or carry the appliance by the power cable.
- 1.1.8 **DO NOT** pull the plug from the socket by the cable.
- 1.1.9 **DO NOT** use worn or damaged cables, plugs or connectors. Immediately have any faulty item repaired or replaced by a qualified electrician. When a BS 1363/A UK 3 pin plug is damaged, cut the cable just above the plug and dispose of the plug safely.



Fit a new plug according to the following instructions (UK only).

- a) Connect the GREEN/YELLOW earth wire to the earth terminal 'E'.
- b) Connect the BROWN live wire to the live terminal 'L'.
- c) Connect the BLUE neutral wire to the neutral terminal 'N'.
- d) After wiring, check that there are no bare wires, that all wires have been

correctly connected, that the cable outer insulation extends beyond the cable restraint and that the restraint is tight. Double insulated products, which are always marked with this symbol , are fitted with live (brown) and neutral (blue) wires only. To rewire, connect the wires as indicated above - **DO NOT** connect either wire to the earth terminal.

- 1.1.10 Products which require more than 13 amps are supplied without a plug. In this case you must contact a qualified electrician to ensure that a suitably rated supply is available. We recommend that you discuss the installation of an industrial round pin plug and socket with your electrician.
- 1.1.11 If an extension reel is used it should be fully unwound before connection. A reel with an RCD fitted is preferred since any appliance plugged into it will be protected. The cable core section is important and should be at least 1.5mm², but to be absolutely sure that the capacity of the reel is suitable for this product and for others which may be used in the other output sockets, we recommend the use of 2.5mm² section cable.

1.2 GENERAL SAFETY INSTRUCTIONS

- ✓ Familiarise yourself with the applications and limitations of the heater.
- ✓ Ensure the heater is in good order and condition before use. If in any doubt do not use the heater and contact a qualified electrician.
- ✓ Only use recommended parts. To use unauthorised items may be dangerous and will invalidate your warranty.
- ✓ Check that element guards are in place, undamaged and firmly attached.
- ✓ Site the heater at least 1m from any walls, obstructions or objects that may be affected by heat and 30cm minimum clearance from the ceiling.
- ✓ Site the heater on a horizontal, flat and stable surface.
- ✓ Disconnect from mains before moving or attempting any cleaning or maintenance.
- ✓ DO NOT use near bath tubs, wash areas or swimming pools.
- x DO NOT use where gas, petrol, paint or other flammable goods are stored.
- x DO NOT position immediately above or below an electrical socket.
- x DO NOT leave turned on and unattended.
- x DO NOT wind the power chord around the heater.
- x DO NOT move the heater whilst in operation.
- x DO NOT touch the heater elements, even when cold.
- x DO NOT disassemble the heater for any reason. The heater must be checked by qualified personnel only.
- x **DO NOT use in the rain, although heater is shower proof it should not be used when raining or in wet conditions.**
- x DO NOT use this product to perform a task for which it has not been designed.
- WARNING! If a fuse blows, ensure it is replaced with an identical fuse type and rating.**
- ✓ When not in use, store the heater carefully in a safe, dry, childproof location.
- WARNING: The warnings, cautions and instructions discussed in this instruction manual cannot cover all possible conditions and situations that may occur. It must be understood that common sense and caution are factors which cannot be built into this product, but must be applied by the operator.**

2. INTRODUCTION & SPECIFICATIONS

Stylish design made from aluminium with weighted base to help prevent toppling. Three settings from 900W to 2100W give controlled heat output. Produces a pleasant relaxing heat and is ideal for use in open workshops, boat yards, forecourts, gardens and terraces. The heater element is situated approximately 2mtr off the ground and the aluminium shade directs the heat downwards and outwards. For extra safety a tip switch is incorporated to cut power should unit be accidentally knocked over. Supplied with 5mtr cable and BS approved 3-pin plug.

Power Settings: 900/1200/2100W
Supply: 230V 50Hz 13A
Height: 2100mm
Cable Length: 5mtr
Weight: 15kg

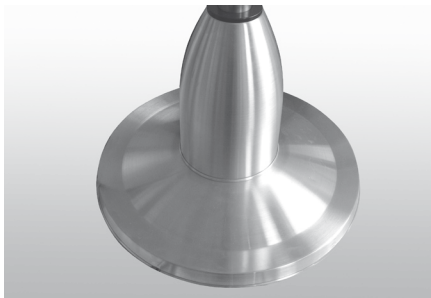
3. ASSEMBLY INSTRUCTIONS



3.1 Thread cable through base and into the base tube. Pull through approx. 2mtr of cable.



3.2 Fix the base tube to the base using the 3 x M6 bolts.



3.3 Slide the domed cover over the base pillar.



3.4 Fit a connecting tube into the base tube and secure with 3 x allan bolts.



3.5 Fit another tube and secure to connecting tube using 3 x allan bolts. Keep passing the cable through the tubes. Repeat this process for the last tube.



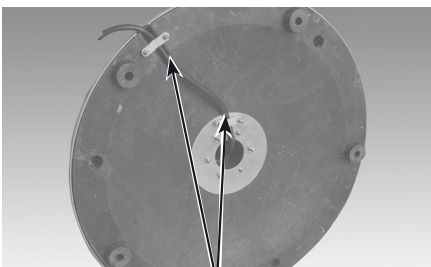
3.6 Use assistance to support the heater head unit and connect the feed cable, a simple push fit.



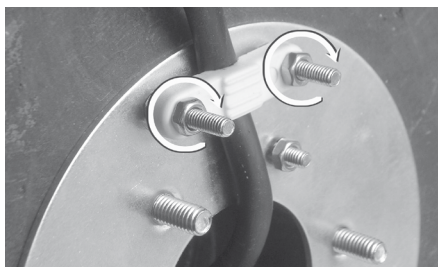
3.7 Lower the head into position, aligning the two screw holes in the head with those on the tube.



3.8 Using two cross head screws secure head unit.



3.9 Carefully lay heater on its side. Fix the cable to the base using the two plastic cable clamps.



3.10 Shows secured cable.

4. OPERATING INSTRUCTIONS

4.1 OPERATION

NOTE! Observe safety warnings in section 1 before connecting this heater to the mains.

- 4.1.1 Ensure the two "ON" and "OFF" switches are both in the "OFF" position (white dots on switches in the raised position).
- 4.1.2 Insert the plug into the supply socket and switch on. (We recommend that a Residual Current Device (RCD) is used).
- 4.1.3 To switch on, press the switches (fig.1).
Low Setting Select switch with one white dot (900W).
Medium Setting Select the switch with two white dots (1200W).
High Setting Select both switches together (2100W).
- 4.1.4 When not in use, turn heater off and disconnect from the mains supply, store in a safe dry childproof location.



5. MAINTENANCE

Ensure heater is disconnected from the mains before performing any maintenance. Clean the surface of the heater with a damp cloth only. Any maintenance or repairs including replacing the halogen tube should only be carried out by an authorised service centre.

NOTE: It is our policy to continually improve products and as such we reserve the right to alter data, specifications and component parts without prior notice.

IMPORTANT: No liability is accepted for incorrect use of this product.

WARRANTY: Guarantee is 12 months from purchase date, proof of which will be required for any claim.

INFORMATION: For a copy of our latest catalogue and promotions call us on 01284 757525 and leave your full name and address, including postcode.



Sole UK Distributor, Sealey Group,
Kempson Way, Suffolk Business Park,
Bury St. Edmunds, Suffolk,
IP32 7AR

01284 757500

www.sealey.co.uk

01284 703534

sales@sealey.co.uk