



# MAINTAINED EMERGENCY LED FIRE EXIT SIGN

MODEL NO: **EM01LED**

Thank you for purchasing a Sealey product. Manufactured to a high standard, this product will, if used according to these instructions, and properly maintained, give you years of trouble free performance.

**IMPORTANT:** PLEASE READ THESE INSTRUCTIONS CAREFULLY. NOTE THE SAFE OPERATIONAL REQUIREMENTS, WARNINGS & CAUTIONS. USE THE PRODUCT CORRECTLY AND WITH CARE FOR THE PURPOSE FOR WHICH IT IS INTENDED. FAILURE TO DO SO MAY CAUSE DAMAGE AND/OR PERSONAL INJURY AND WILL INVALIDATE THE WARRANTY. KEEP THESE INSTRUCTIONS SAFE FOR FUTURE USE.



Refer to  
instructions



Indoor use  
only

## 1. SAFETY

### 1.1. ELECTRICAL SAFETY

- ☐ **WARNING!** It is the user's responsibility to check the following:
  - ✓ Check all electrical equipment and appliances to ensure that they are safe before using.
  - ✓ Inspect power supply leads, plugs and all electrical connections for wear and damage.
  - ✓ Ensure that the insulation on all cables and on the appliance is safe before connecting it to the power supply.
  - ✗ **DO NOT** use worn or damaged cables, plugs or connectors.
  - ✓ Ensure that any faulty item is repaired or replaced immediately by a Sealey qualified technician.
  - ✓ If the cable or plug is damaged during use, switch off the electricity supply and remove from use.
  - ✓ Sealey recommend that an RCD (Residual Current Device) is used with all electrical products.
- IMPORTANT:** Ensure that the voltage rating on the appliance suits the mains power supply.
- ✗ **DO NOT** pull or carry the appliance by the power cable.
- ✗ **DO NOT** pull the plug from the socket by the cable.
- ☐ **WARNING!** Disconnect the unit from the mains supply before replacing the batteries.

### 1.2. BATTERY SAFETY

- ☐ **WARNING!** To reduce the risk of burns or fire:
  - ✗ **DO NOT** attempt to open, disassemble, modify or service the battery pack.
  - ✗ **DO NOT** crush, puncture, short external contacts or dispose of in fire or water.
  - ✗ **DO NOT** expose to temperatures above 60°C (140°F).
  - ✓ Recycle or dispose of used battery as stipulated by local regulation.
  - ✓ If the electrolyte in the cells gets on your skin, thoroughly wash with soap and water. If it gets in your eyes, rinse thoroughly with cool water and seek immediate medical attention.

### 1.3. GENERAL

- ✓ The light source contained in this luminaire shall only be replaced by the manufacturer or his service agent or a similar qualified person.
- ✓ Replace the battery and luminaire when either no longer meet their rated duration of operation after the corresponding recharge period.
- ✓ Ensure there is adequate spacing for installation and to meet local regulations.
- ✓ Ensure the maximum length of cable limits voltage drop to less than 3%.
- ✓ Ensure the fixings used for mounting the unit are suitable for the wall/ceiling.
- ✓ This product is suitable for indoors only, with an ambient temperature range from 0°C to 40°C.

## 2. INTRODUCTION

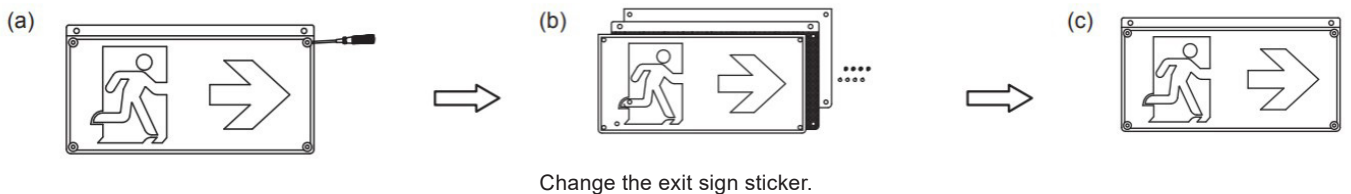
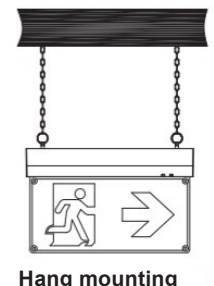
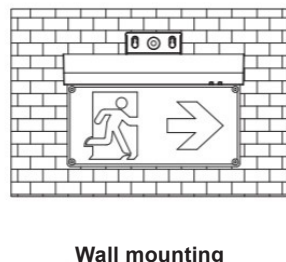
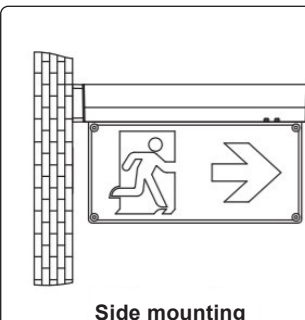
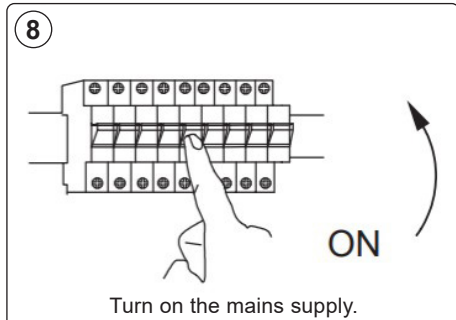
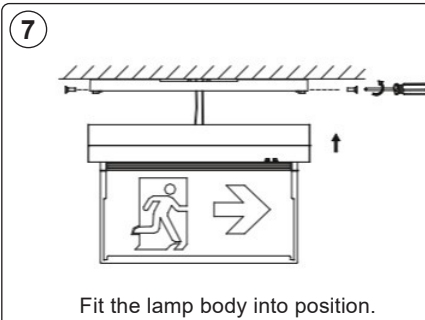
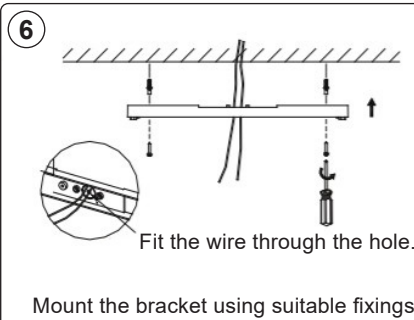
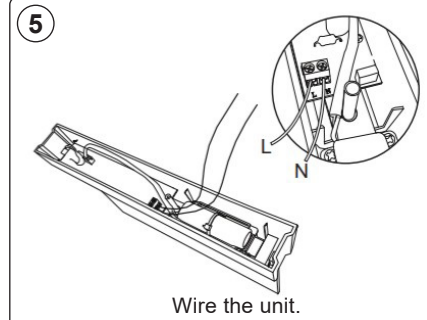
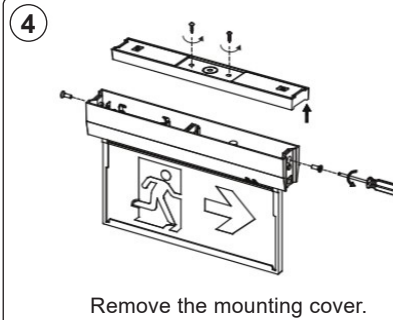
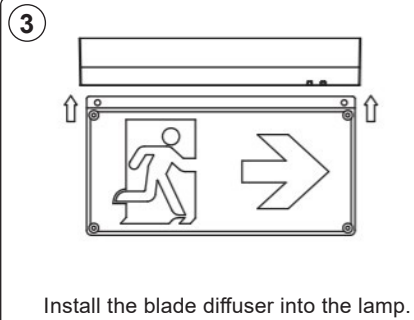
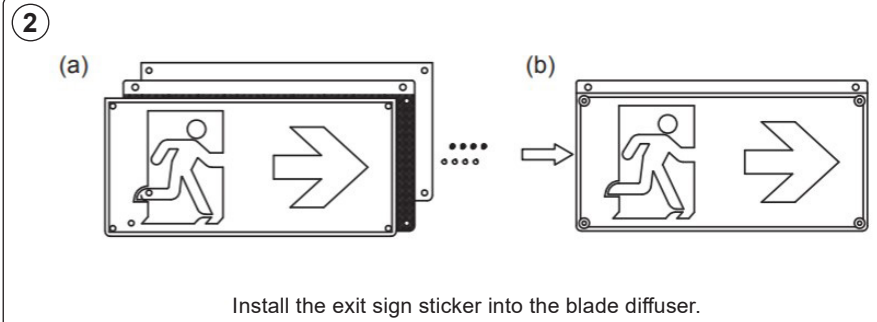
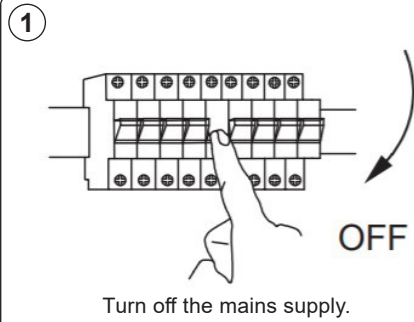
Maintained light mode will illuminate constantly and remain illuminated during a power outage. Includes brackets to mount to a wall from the side or behind, bracket for mounting directly to a ceiling and chains to hang the light from the ceiling. Features high quality LiFePO4 backup battery with run time of 3 hours in an emergency. Includes set of 6 legends, including signs with left, right and up arrows. Built-in test button allows for regular checks to ensure the light is functioning correctly.

## 3. SPECIFICATION

Model No:.....EM01LED  
Emergency Runtime:.....3hr  
Mount:.....Wall & Ceiling  
Nett Weight: .....0.62kg  
Power:.....4W

Supply:.....230V ~ 50Hz  
Ambient Temperature Range: .....0-40°C  
Max. Operating Temperature of Winding: .....130°C  
Max. Operating Temperature of Capacitor: .....105°C

## 4. INSTALLATION



## 5. OPERATION

### 5.1. TESTING

Ensure the batteries have been fully charged for 24 hours before initial testing. Turn the power on. The LED indicator will illuminate GREEN. Press the test button once to start the monthly test, or twice to start the annual test. The GREEN indicator will flash for 30 seconds when running the monthly test, or 180 minutes when running the annual test. Hold the test button (2s) to cancel the test.

### 5.2. FREQUENCY OF TESTS

The monthly test should be carried out every  $30 \pm 2$  days after installation, and takes 30 seconds to complete. The annual test should be carried out every  $365 \pm 5$  days and takes 180 minutes to complete.

LED INDICATOR	STATUS	REMARKS
Solid GREEN.	Standby mode.	Mains in operation. Battery is charging/charged.
Indicator OFF.	Battery in operation.	Mains disconnected. Emergency mode.
RED flashing ×1 (ON 0.5s-OFF 3s).	Battery disconnected.	Check battery connection.
RED flashing ×2 (ON 0.5s-OFF 3s) ×2.	Low battery capacity.	If the battery was fully charged for 24 hours before testing, replace the battery.
RED flashing ×3 (ON 0.5s-OFF 3s) ×3.	Lamp disconnected/shorted.	Check light source connection. Replace a light source.

### 5.3. RESET

When there is a problem, the LED indicator switches to RED. After the problem has been resolved, reconnect the battery while the mains power is off. The LED indicator will switch to GREEN after the mains power is turned on.

### 5.4. REPLACING THE BATTERY

- ❑ **WARNING!** Disconnect the unit from the mains power before replacing the batteries. Reconnect to mains power. The LED indicator switches to GREEN. Press and hold test button(5s) to turn off discharging when main powers is off.

### 5.5. IMPORTANT BATTERY INFORMATION

For best results, it is recommended that the batteries receive an initial charge within the first six months of the manufacture date of the fixture. The manufacture date can be found on the batteries. In many cases, batteries beyond the initial charge recommendation time frame will recover if fully charged soon after installation. If such a battery does not recover after a full initial charge, it should be replaced.

## 6. MAINTENANCE

### 6.1. GENERAL

Maintenance is to be performed when necessary to maintain correct and safe performance. Before conducting any maintenance work, turn off the product. All maintenance should be performed by an authorised service centre. Electrical repairs should **ONLY** be made by a qualified electrician. **DO NOT** use a faulty unit. Contact an authorised service centre for repair.

### 6.2. CLEANING

Keep the unit clean from dirt and grease. Turn off before cleaning. Regularly clean with a damp cloth. **DO NOT** clean with abrasive materials or harsh chemicals. **DO NOT** spray water on the product, or allow water enter the battery compartment or internal components. **DO NOT** open enclosures to clean electrical parts.

### 6.3. STORAGE

Store the product in a cool, dry location. If the product is to be transported, place it in the original packaging.



#### ENVIRONMENT PROTECTION

Recycle unwanted materials instead of disposing of them as waste. All tools, accessories and packaging should be sorted, taken to a recycling centre and disposed of in a manner which is compatible with the environment. When the product becomes completely unserviceable and requires disposal, drain any fluids (if applicable) into approved containers and dispose of the product and fluids according to local regulations.



REGISTER YOUR PURCHASE HERE



#### WEEE REGULATIONS

Dispose of this product at the end of its working life in compliance with the EU Directive on Waste Electrical and Electronic Equipment (WEEE). When the product is no longer required, it must be disposed of in an environmentally protective way. Contact your local solid waste authority for recycling information.



#### BATTERY REMOVAL

Under the Waste Batteries and Accumulators Regulations 2009, Jack Sealey Ltd are required to inform potential purchasers of products containing batteries (as defined within these regulations), that they are registered with Valpak's registered compliance scheme. Jack Sealey Ltd Batteries Producer Registration Number (BPRN) is BPRN00705.

**Note:** It is our policy to continually improve products and as such we reserve the right to alter data, specifications and component parts without prior notice.

**Important:** No Liability is accepted for incorrect use of this product.

**Warranty:** Guarantee is 12 months from purchase date, proof of which is required for any claim.

**Jack Sealey Ltd t/a Sealey Group**, Kempson Way, Suffolk Business Park, Bury St Edmunds, Suffolk, IP32 7AR UK  
**Jack Sealey (EU) Ltd t/a Sealey Group**, Farney Street, Carrickmacross, Co. Monaghan, A81 PK68 Ireland  
**Tel:** 01284 757500 • **Email:** sales@sealey.co.uk • **Web:** www.sealey.co.uk