

Thank you for purchasing a Sealey product. Manufactured to a high standard this product will, if used according to these instructions and properly maintained, give you years of trouble free performance.



**IMPORTANT: READ THESE INSTRUCTIONS CAREFULLY. NOTE THE SAFE OPERATIONAL REQUIREMENTS, WARNINGS AND CAUTIONS. USE THE TOOL CORRECTLY AND WITH CARE FOR THE PURPOSE FOR WHICH IT IS INTENDED. FAILURE TO DO SO MAY CAUSE DAMAGE AND/OR PERSONAL INJURY AND WILL INVALIDATE THE WARRANTY. PLEASE KEEP INSTRUCTIONS SAFE FOR FUTURE USE.**

## 1. SAFETY INSTRUCTIONS

- WARNING!** Ensure Health and Safety, local authority and general workshop practice regulations are adhered to when using tools.
- DO NOT** use tools if damaged.
- Maintain tools in good and clean condition for best and safest performance.
- Wear approved eye protection and gloves. A full range of personal safety equipment is available from your Sealey dealer.
- Wear suitable clothing to avoid snagging. Do not wear jewellery and tie back long hair.

**IMPORTANT: This manual is provided as a guide only, if possible refer to the vehicle manufacturer's service instructions, or a proprietary manual, to establish the current procedure and data.**

**Caution is needed when working near:** *glass, electrical wiring present in doors, for electric windows and central locking mechanisms, air bags and air bag explosive charges.*

**If the operator has not undertaken specific training, DO NOT use these tools.**

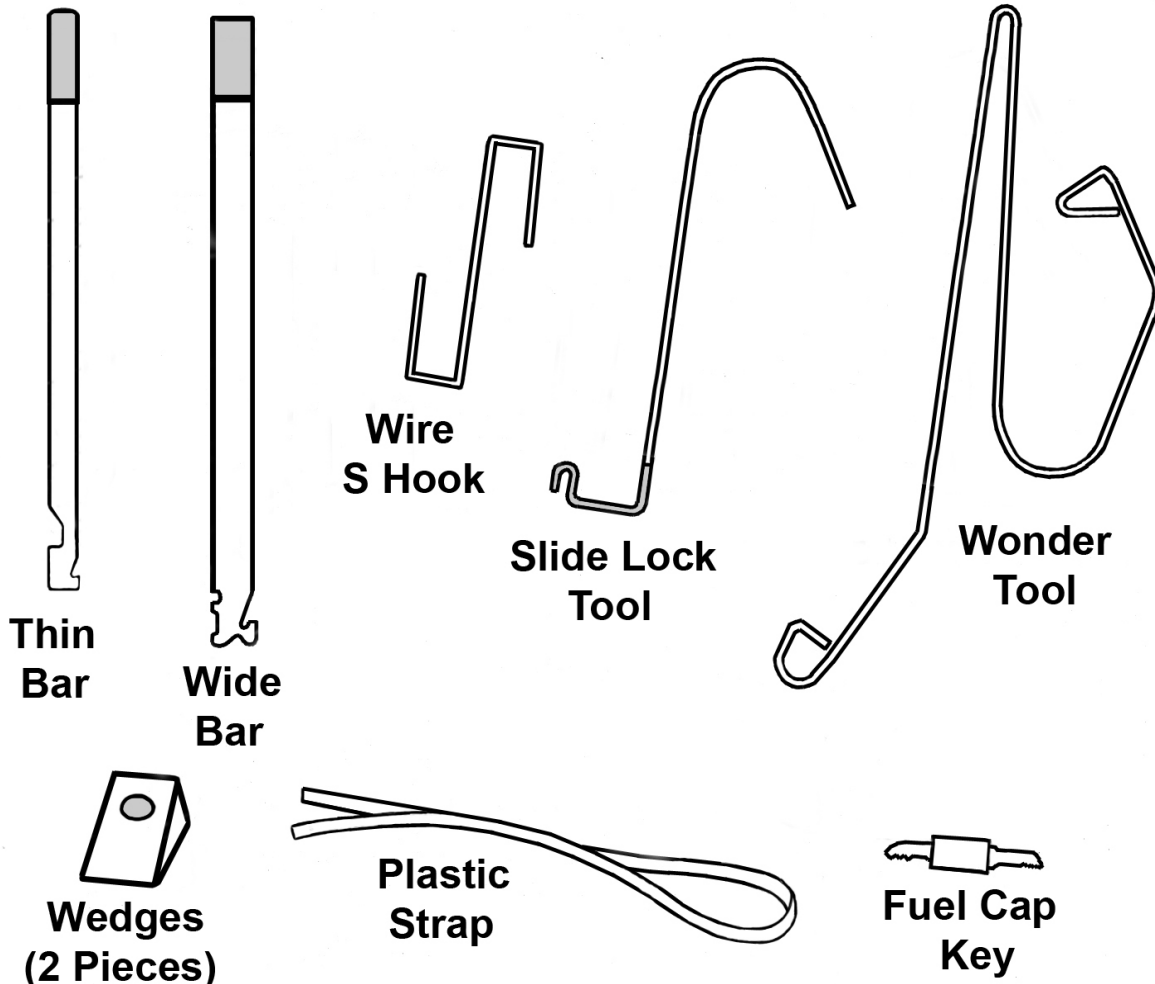
- WARNING!** Failure to heed safety and warning instructions may result in damage and/or personal injury and will invalidate the warranty.
- WARNING!** The warnings, cautions and instructions referred to in this manual cannot cover all possible conditions and situations that may occur. It must be understood that common sense and caution are factors which cannot be built into this product, but must be applied by the operator.

**NOTE:** This kit is to be sold to, and only used by, bona-fide motor-trade personnel.

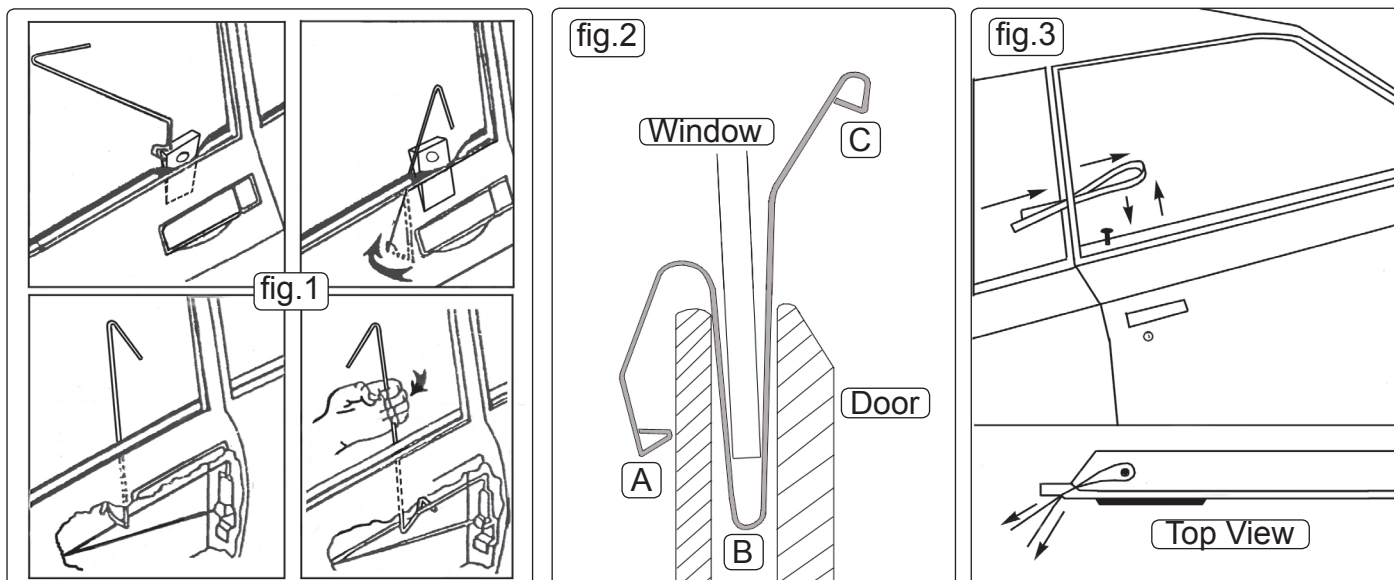
## 2. INTRODUCTION

Designed for the US market, this kit will open a comprehensive range of European and Japanese cars too.

This kit consists of several tools to enable the emergency unlocking of vehicles. As the locks of the vehicles in question will be of an unknown design, it will be a process of elimination and experience to pick the correct tool for the vehicle. These instructions can only outline the uses of the various tools and no specific vehicle application list is supplied.



### 3. OPERATION



#### 3.1. Slide Lock Tool (fig.1)

This tool can be used to hook onto the connecting linkage rods inside the door. Carefully insert a wedge between the window and door surround and slide the tool down into the door space about 10cms. Twist it through 90° so the hook is facing outwards. Remove the wedge. Lower the tool so that it touches the linkage rod. Move the tool until you can feel the linkage rod fit into the hook. Twist the tool to grip the linkage rod and move the linkage rod to open the lock.

#### 3.2. Wire S Hook

Similar to the Slide Lock tool in operation and use. For hooking under linkage/rod or pushing linkage/rod down.

#### 3.3. Wonder Tool (fig.2)

This tool can be used to reach inside the vehicle and move the door handle or locking switch. The tool may need to be adjusted wide wise to fit the door, by bending A inwards. Carefully insert a wedge between the window and door surround and slide the tool down into the door space until loop (B) is below the window glass. remove the wedge. Twist the tool through about 20-30° (just enough so that it is inside the glass) and lift the tool upwards slowly, easing the tool past the inside rubber seal. Once the end of the tool (A) has cleared the door capping, turn the tool so that it is at 90° to the window and move the tool down to engage (A) with the handle or switch to open the lock.

#### 3.4. Thin Bar and Wide Bar

These bars are used in a similar way to the Slide Lock tool, for hooking onto the linkage rods or manipulating the door lock lever. They are useful where space is very limited. As they are flat bladed, they cannot be twisted in use, but may need to be bent to be used.

#### 3.5. Plastic Strap (fig.3)

This is useful for older vehicles which have flat topped door locking buttons. Push the loop of the strap past the rubber door seal and using the two strap ends, manoeuvre the loop down over the door button. Once positioned, pull the loop tight, then pull the strap upwards and lift the button up.

#### 3.6. Wedges

Use to open up a small gap between the window glass and the rubber seal, to enable the tools to slide in more easily.

#### 3.7. Fuel Cap Key

Work the key in and out of the lock several times, jiggling it up and down at the same time. It may be necessary to try using both ends of the key to see which one fits best.

Parts support is available for this product. To obtain a parts listing and/or diagram, please log on to [www.sealey.co.uk](http://www.sealey.co.uk), email [sales@sealey.co.uk](mailto:sales@sealey.co.uk) or phone 01284 757500.

**NOTE:** It is our policy to continually improve products and as such we reserve the right to alter data, specifications and component parts without prior notice.

**IMPORTANT:** No liability is accepted for incorrect use of this product.

**WARRANTY:** Guarantee is 12 months from purchase date, proof of which will be required for any claim.

**INFORMATION:** For a copy of our latest catalogue and promotions call us on 01284 757525 and leave your full name and address, including postcode.

**SEALEY** Professional  
TOOLS  
AUTO SERVICE LINE

Sole UK Distributor, Sealey Group,  
Kempson Way, Suffolk Business Park,  
Bury St. Edmunds, Suffolk,  
IP32 7AR

☎ 01284 757500

📠 01284 703534

🌐 [www.sealey.co.uk](http://www.sealey.co.uk)

✉ [sales@sealey.co.uk](mailto:sales@sealey.co.uk)