

SEALEY

POWER TOOLS

Instructions for:
MULTIPURPOSE ROTARY TOOL

Model No: **E540**

Thank you for purchasing a Sealey product. Manufactured to a high standard this product will, if used according to these instructions and properly maintained, give you years of trouble free performance.



IMPORTANT

PLEASE READ THESE INSTRUCTIONS CAREFULLY. NOTE THE SAFE OPERATIONAL REQUIREMENTS, WARNINGS AND CAUTIONS. USE THIS PRODUCT CORRECTLY AND WITH CARE FOR THE PURPOSE FOR WHICH IT IS INTENDED. FAILURE TO DO SO MAY CAUSE DAMAGE AND/OR PERSONAL INJURY, AND WILL INVALIDATE THE WARRANTY. RETAIN THESE INSTRUCTIONS FOR FUTURE USE.

1. SAFETY INSTRUCTIONS

1.1 ELECTRICAL SAFETY

WARNING! It is the user's responsibility to read, understand and comply with the following:

You must check all electrical equipment and appliances to ensure they are safe before using. You must inspect power supply leads, plugs and all electrical connections for wear and damage. You must ensure the risk of electric shock is minimised by the installation of appropriate safety devices. An RCCB (Residual Current Circuit Breaker) should be incorporated in the main distribution board. We also recommend that an RCD (Residual Current Device) is used with all electrical products. It is particularly important to use an RCD with portable products that are plugged into an electrical supply not protected by an RCCB. If in doubt consult a qualified electrician. You may obtain a Residual Current Device by contacting your Sealey dealer. **You must** also read and understand the following instructions concerning electrical safety.

1.1.1 The **Electricity At Work Act 1989** requires all portable electrical appliances, if used on business premises, to be tested by a qualified electrician, using a Portable Appliance Tester (PAT), at least once a year.

1.1.2 The **Health & Safety at Work Act 1974** makes owners of electrical appliances responsible for the safe condition of the appliance and the safety of the appliance operator. **If in any doubt about electrical safety, contact a qualified electrician.**

1.1.3 Ensure the insulation on all cables and the product itself is safe before connecting to the mains power supply. See 1.1.1. & 1.1.2. above and use a Portable Appliance Tester (PAT).

1.1.4 Ensure that cables are always protected against short circuit and overload.

1.1.5 Regularly inspect power supply, leads, plugs for wear and damage and all electrical connections to ensure that none is loose.

1.1.6 **Important:** Ensure the voltage marked on the product is the same as the electrical power supply to be used and check that plugs are fitted with the correct capacity fuse. A 13 amp plug may require a fuse smaller than 13 amps for certain products, see fuse rating at right.

1.1.7 **DO NOT** pull or carry the tool by its power supply lead.

1.1.8 **DO NOT** pull power plugs from sockets by the power cable.

1.1.9 **DO NOT** use worn or damaged leads, plugs or connections. Immediately replace or have repaired by a qualified electrician. A U.K. 3 pin plug with ASTA/BS approval is fitted. In case of damage, cut off and fit a new plug according to the following instructions (discard old plug safely).


(UK only - see diagram at right). **Ensure the unit is correctly earthed via a three-pin plug.**

a) **Connect the GREEN/YELLOW earth wire to the earth terminal 'E'.**

b) **Connect the BROWN live wire to live terminal 'L'.**

c) **Connect the BLUE neutral wire to the neutral terminal 'N'.**

d) **After wiring, check there are no bare wires, that all wires have been correctly connected, that cable outer insulation extends beyond the cable restraint and that the restraint is tight.**

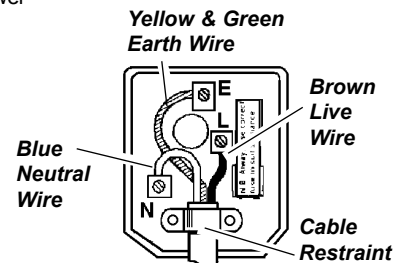
Double insulated products are often fitted with live (BROWN) and neutral (BLUE) wires only. Double insulated products are always marked with this symbol . **To re-wire, connect the brown & blue wires as indicated above. DO NOT connect the brown or blue to the earth terminal.**

1.1.10 Some products require more than a 13 amp electrical supply. In such a case, **NO** plug will be fitted. **You must** contact a qualified electrician to ensure a 30 amp fused supply is available. We recommend you discuss the installation of a industrial round pin plug and socket with your electrician.

1.1.11 **Cable extension reels.** When a cable extension reel is used it should be fully unwound before connection. A cable reel with an RCD fitted is recommended since any product which is plugged into the cable reel will be protected. The section of the cores of the cable is important. We suggest 1.5mm² section as a minimum but to be absolutely sure that the capacity of the cable reel is suitable for this product and for others that may be used in the other output sockets, we recommend the use of 2.5mm² section cable.

1.2 GENERAL SAFETY

- ✓ Only power the tool from the mains supply.
- ✓ Disconnect the tool from the mains supply before changing accessories, servicing or performing any maintenance.
- ✓ Maintain tool and accessories in good condition. Check moving parts and alignment. If necessary use an authorised service agent.
- ✓ Replace or repair damaged parts using recommended parts. Un-authorised parts may be dangerous and will invalidate the warranty.
- ✓ Wear approved safety eye protection with side shields and a dust mask if generating dust.
- ✓ Remove ill fitting clothing. Remove ties, watches, rings and other loose jewellery and contain long hair.
- ✓ Use the tool in a suitable working area, keep area clean and tidy and free from unrelated materials and ensure that there is adequate lighting.
- ✓ Prevent body contact with earthed surfaces to avoid electric shock e.g. pipes, radiators, refrigerators etc.
- ✓ Maintain correct balance and footing.
- ✓ Keep children and unauthorised persons away from the working area.
- ✓ Secure unstable workpiece with a clamp, vice or other adequate holding device.
- ✓ Avoid unintentional starting. Keep the tool clean for best and safest performance.
- ✓ When not in use switch tool off and unplug it from the mains supply. Store it in the case and put in a dry, childproof area.
- x **DO NOT** over-reach. Ensure the floor is not slippery and wear non-slip shoes.
- x **DO NOT** use the tool for a task it is not designed to perform.
- x **DO NOT** operate tool where there are flammable liquids or gases.
- x **DO NOT** get the tool wet or use in damp or wet locations.
- x **DO NOT** carry the tool by the cable.
- x **DO NOT** hold unsecured work in your hand.
- x **DO NOT** leave the tool running unattended.
- x **DO NOT** operate the tool if any parts are missing or damaged as this may cause failure and/or personal injury.
- x **DO NOT** operate the tool when you are tired or under the influence of alcohol, drugs or intoxicating medication.



FUSE RATING
THIS PRODUCT MUST BE FITTED
WITH A
3 AMP FUSE

2. TECHNICAL SPECIFICATION

Input Power.....	230 volt
Speed Range.....	8000 to 30000rpm
Speed Settings.....	Stepless control
Collet Capacities.....	2.3mm and 3mm
Twist Drills.....	2.3mm and 3mm
Mounted Points.....	10pc
Diamond Tipped Engraving Heads.....	2 x 1.8mm
Sanding Cylinder.....	12.7mm x 12.7mm



Fig. 1

3. CONTENTS

3.1 Check contents against the following list. If any item is missing or damaged contact your supplier immediately. Refer to Fig. 2.

- 1) Grinding wheel.
- 2) Sanding shank (12.7 x 12.7mm).
- 3) Spherical diamond cutter.
- 4) Tapered diamond cutter.
- 5) Mandrel for cut-off wheels.
- 6) Mandrel for felt wheel.
- 7) Sanding band (12.7 x 12.7mm).
- 8) Sanding discs (20 x 0.35mm).
- 9) Cut-off wheels.
- 10) Felt wheel (22 x 7mm).
- 11) Felt wheel (12.7 x 7mm).
- 12) Dressing stone (20 x 10 x 10).
- 13) Brass collet (2.3mm).
- 14A) HSS twist drill (2.3mm)
- 14B) HSS twist drill (3mm).
- 15) Wrench (9.7mm).

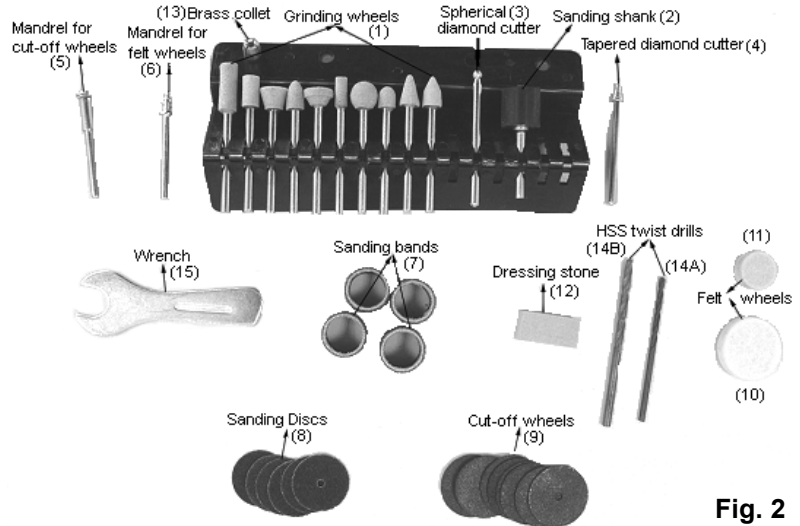


Fig. 2

4. OPERATING INSTRUCTIONS

4.1 Connection

- 4.1.1 Ensure that ON/OFF switch is in the OFF position. 'OFF' is shown as '0' on the switch plate. Refer to Fig. 1.
- 4.1.2 Insert the plug on the end of the tool cable into a mains socket.

4.2 Fitting Accessories

- 4.2.1 Ensure the tool is switched off and unplugged from the mains supply.
- 4.2.2 Press the spindle lock button and slowly turn the collet nut until the spindle lock engages. Refer to Fig. 1.
- 4.2.3 Retain pressure on the spindle lock button and turn the collet nut anticlockwise to open the collet.

NOTE: Never press the spindle lock button when the tool is running.

- 4.2.4 The required accessory may now be fitted into the collet. Fully insert the accessory shaft to reduce the risk of bending in use. Tighten the collet nut firmly. Finally, release the spindle lock button.
- 4.2.5 To change collets, proceed as in paragraphs 4.2.1 to 4.2.3 but continue to unscrew the collet nut until it can be removed from the spindle. Change collets and replace the collet nut.
- 4.2.6 Select the speed required on the variable speed control. Small accessories require high speed and large accessories low speed. If in doubt, start on a low setting and gradually increase the speed until the best performance is obtained.
- 4.2.7 Check that the ON/OFF switch is set to OFF and then connect the tool to the mains supply. Set the ON/OFF switch to ON.

NOTE: DO NOT switch ON with a tool bit touching the workpiece. Always allow a bit to reach required speed before applying it to the workpiece.

5. MAINTENANCE

5.1 Cleaning

Keep the tool ventilation slots clean and free from obstructions. If available, blow compressed air into the vents to clear any internal dust. Safety goggles **MUST** be worn when undertaking this process. Keep the drill outer case clean and free from grease. Wipe it down with a damp cloth.

DO NOT wash with water or use solvents or abrasives.

5.2 Other

To service the tool contact your local Sealey service agent.

Declaration of Conformity We, the sole importer into the UK, declare that the product listed here is in conformity with the following standards and directives.

E540 Multipurpose Rotary Tool
73/23/EEC Low Voltage Directive
89/336/EEC EMC Directive
98/37/EEC Machinery Equipment Directive



The construction file for this product is held by the Manufacturer and may be inspected, by a national authority, upon request to Jack Sealey Ltd.

Signed by Steve Buckle

Date 15th February 2006

For Jack Sealey Ltd. Sole importer into the UK of Sealey Power Tools.



Sole UK Distributor
Sealey Group,
Bury St. Edmunds, Suffolk.



01284 757500

01284 703534



www.sealey.co.uk

sales@sealey.co.uk