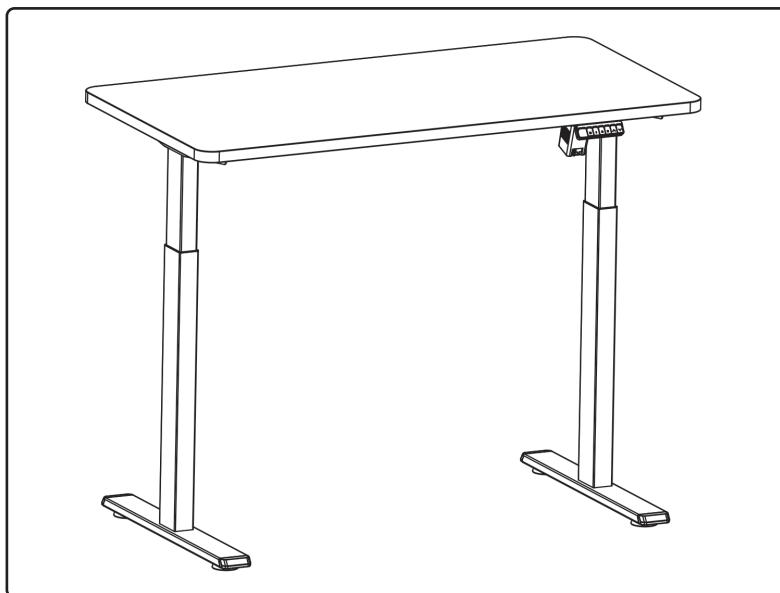




Height Adjustable Sit & Stand Desk, Electric Standing, Oak, 120 x 60cm - DH66.V2



Model No. DH66.V2

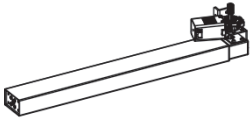
Thank you for purchasing a Dellonda product. Manufactured to a high standard, this product will, if used according to these instructions, and properly maintained, give you years of trouble free performance.

Important Information

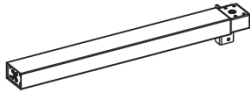
Please read these instructions carefully and note any safe operational requirements, warnings & cautions. Use the product correctly and with care for the purpose for which it is intended. Failure to do so may cause damage and/or personal injury and will invalidate the warranty. Keep these instructions safe for future use.

Contents

- Please check all of the components shown are present. If there are any damaged or missing, please contact Dellonda.



A (x1)
Lifting Column



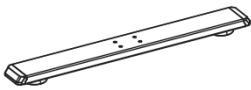
B (x1)
Lifting Column



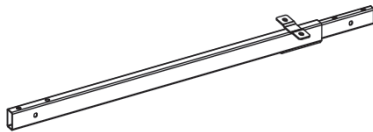
C (x2)
Side Bracket



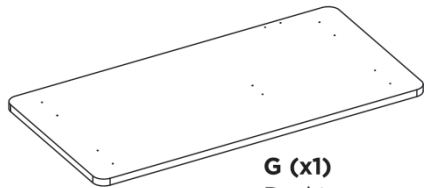
D (x1)
Sync Rod



E (x2)
Foot



F (x1)
Crossbar

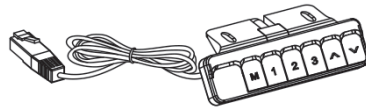


G (x1)
Desktop

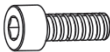


H (x1)
AC Adapter

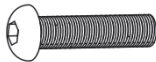
The picture of the AC Adapter is for reference only. Actual product may vary.



I (x1)
Controller



S-A (x4)
M5x14
Screw



S-B (x2)
M6x25
Screw



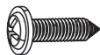
S-C (x8)
M6x30
Screw



S-D (x4)
M6x50
Screw



S-E (x5)
ST4.2x13
Screw



S-F (x10)
ST4.2x16
Screw



S-G (x10)
Anti-Vibration Pad



S-H (x3)
Cable Tie



S-I (x1)
4mm
Allen Wrench

What important specifications should know before installation?



Power Input
(100~240V)



Operation Temperature
(-5°C~+40°C)



Weight Capacity
70kg (154lbs)

What tools are needed to assemble the desk frame?



Bubble Level



Allen Wrench
(Included)



Drill

Safety Instructions

• ELECTRICAL SAFETY

- **WARNING!** It is the user's responsibility to check the following:
- Check all electrical equipment and appliances to ensure that they are safe before using.
- Inspect power supply leads, plugs and all electrical connections for wear and damage.
- Ensure that the insulation on all cables and on the appliance is safe before connecting it to the power supply.
- **DO NOT** use worn or damaged cables, plugs or connectors.
- Ensure that any faulty item is repaired or replaced immediately by a Dellonda qualified technician.
- If the cable or plug is damaged during use, switch off the electricity supply and remove from use.
- Dellonda recommend that an **RCD** (Residual Current Device) is used with all electrical products.
- **Important:** Ensure that the voltage rating on the appliance suits the power supply to be used and that the plug is fitted with the correct fuse.
- **DO NOT** pull or carry the appliance by the power cable.
- **DO NOT** pull the plug from the socket by the cable.
- The external flexible cable or cord of this transformer cannot be replaced; if the cord is damaged, the transformer shall be scrapped.

• GENERAL SAFETY

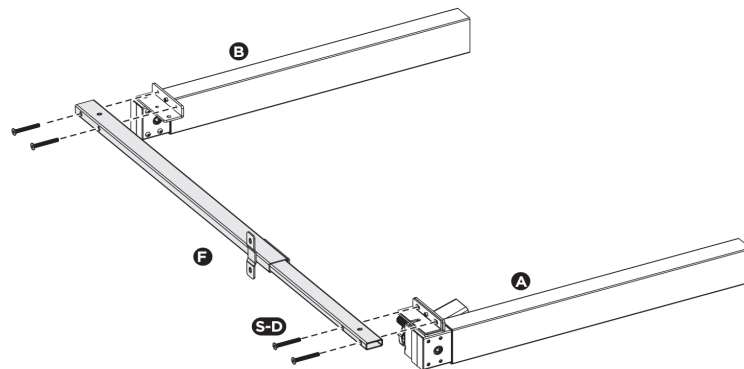
- Make sure that the mounting surface is strong enough to handle mounted product and equipment.
- **DO NOT EXCEED MAXIMUM LISTED WEIGHT CAPACITY.**
- Always use an assistant or a mechanical lifting device to safely lift and position heavy products.
- Tighten screws firmly, but do not over tighten. Over tightening can cause product damage that greatly reduces the holding power.
- Keep a clear area and distance from moving parts when using the product.
- Use only as intended. Never stand, hang or climb on the product.
- This product is intended for indoor use only.
- Any attempts to reconstruct the construction or alterations of the given power unit and control box aren't allowed.
- This product may contain small items that could be a choking hazard if swallowed. Keep children away unless the product is intended for their use and all instructions and manuals are fully reviewed and understood by them.
- Check that the product is secure and safe to use at regular intervals (at least every three months).
- **DO NOT** clean the product with water while the power is still connected.
- **DO NOT** disassemble or replace components while the power is still connected. Never operate the system with a damaged cord or plug.
- Never operate the system if it's in moist environment or its electrical components have contact with liquids.
- If the control box makes unusual noise or smells, switch off the mains voltage immediately.
- Children from age 8 years and above, persons with reduced physical, sensory, or mental capabilities those with lack of experience and knowledge can use the appliance, if they have been given supervision or instruction concerning use of the appliance in a safe way to understand the hazards involved.
- Children shall **NOT** play with the appliance.
- Cleaning and user maintenance on the appliance shall not be made by children without supervision.

Specification

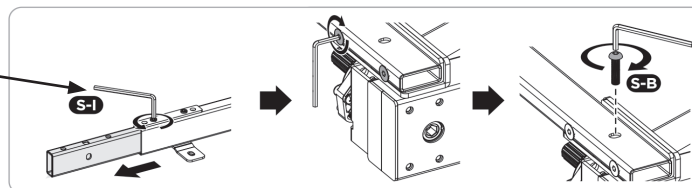
- Desk top Dimensions: 120 x 60cm
- Desktop Thickness: 25mm
- Height Range: 74 to 122cm
- Maximum Load Capacity: 70kg
- Weight: 30.9kg
- Noise Level: <51dB
- Plug Type: 3-Pin **BS**
- Speed: 25mm/s
- Supply: 230V

Assembly

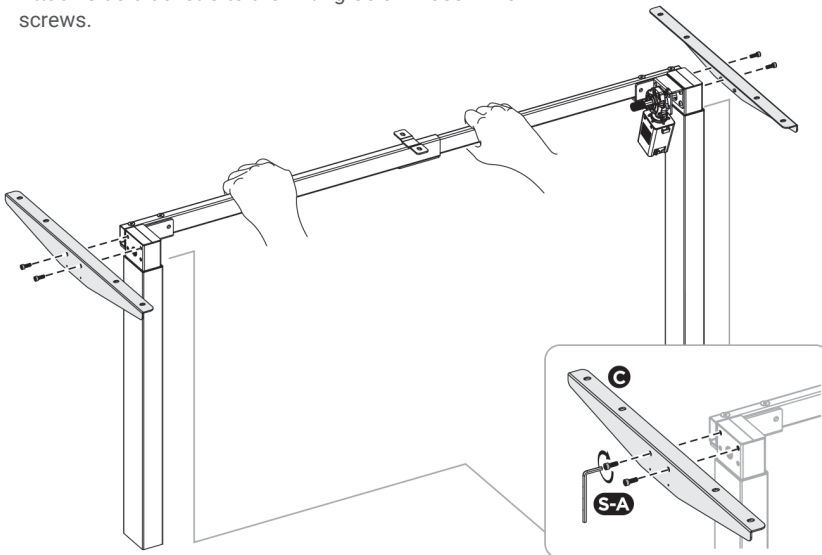
- **Step 1: Attach the Crossbar**
- Attach the crossbar F to the lifting columns A/B use 4 M6x50 screws S-D and 2 M6x25 screws S-B



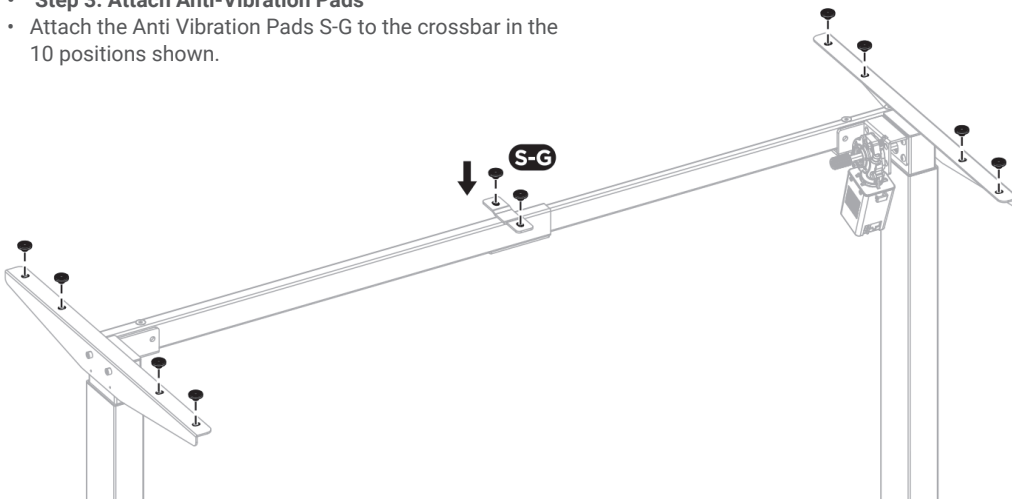
Loosen the hex head screws that fix the extendible section.
Don't remove the screws completely.



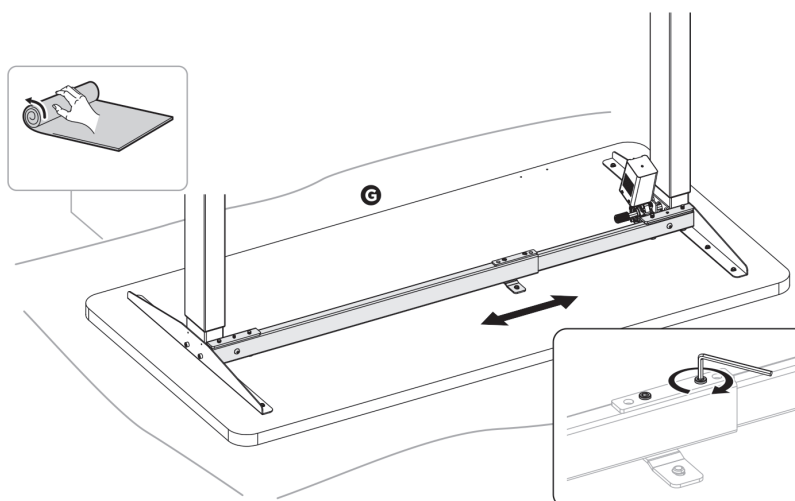
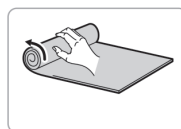
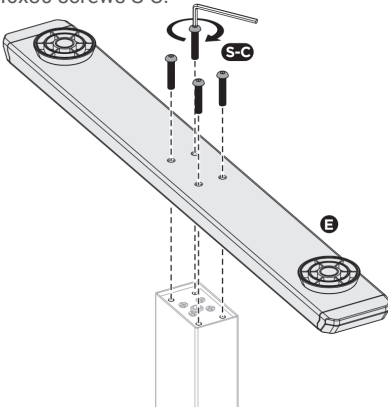
- **Step 2: Attach the Side Brackets**
- Attach side bracket C to the Lifting Column use 4 M5x14 screws.



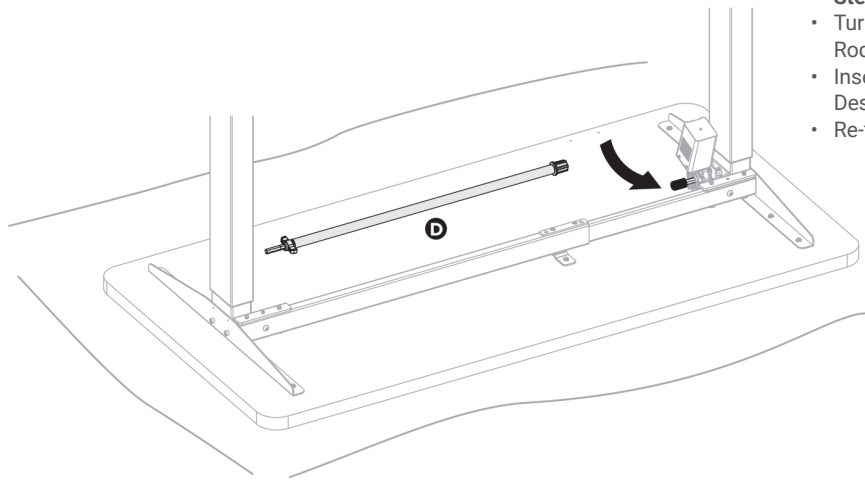
- **Step 3: Attach Anti-Vibration Pads**
- Attach the Anti Vibration Pads S-G to the crossbar in the 10 positions shown.



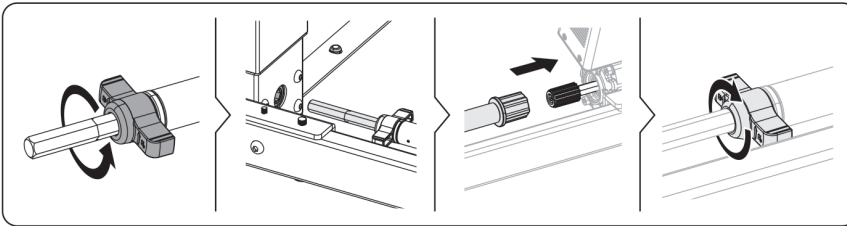
- **Step 4: Attaching the Feet**
- Place the Lifting Columns A/B upside down on the floor.
- Attach Foot E to the Lifting Column use 4 M6x30 screws S-C.



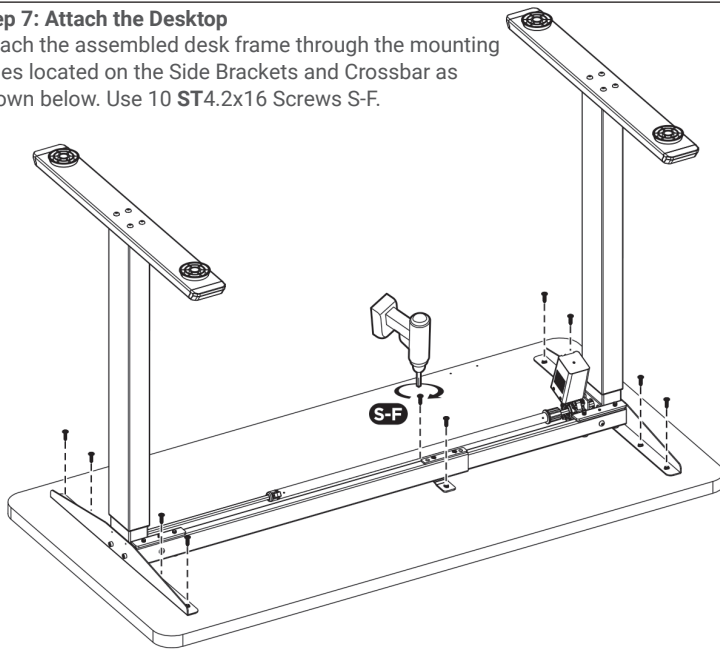
- **Step 5: Adjusting the Frame**
- Carefully place the Desktop G upside down on a blanket or cardboard to protect its surface.
- Place the legs, one on each side, as shown below.
- Adjust the Crossbar to the size of the Desktop. Ensure the frame is placed in the centre of the Desktop.
- Tighten the screws on the Crossbar.



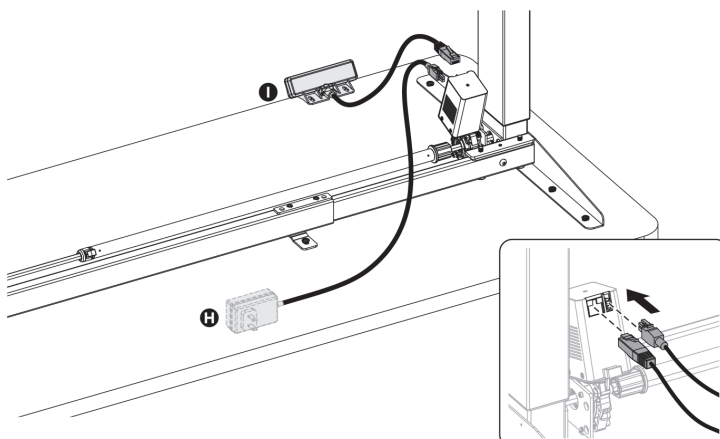
- **Step 6: Attach the Sync Rod:**
- Turn the knob as shown to loosen and adjust the Sync Rod D.
- Insert both ends of the Sync Rod into the holes on the Desk Frame as shown in the illustration below.
- Re-tighten the knob.

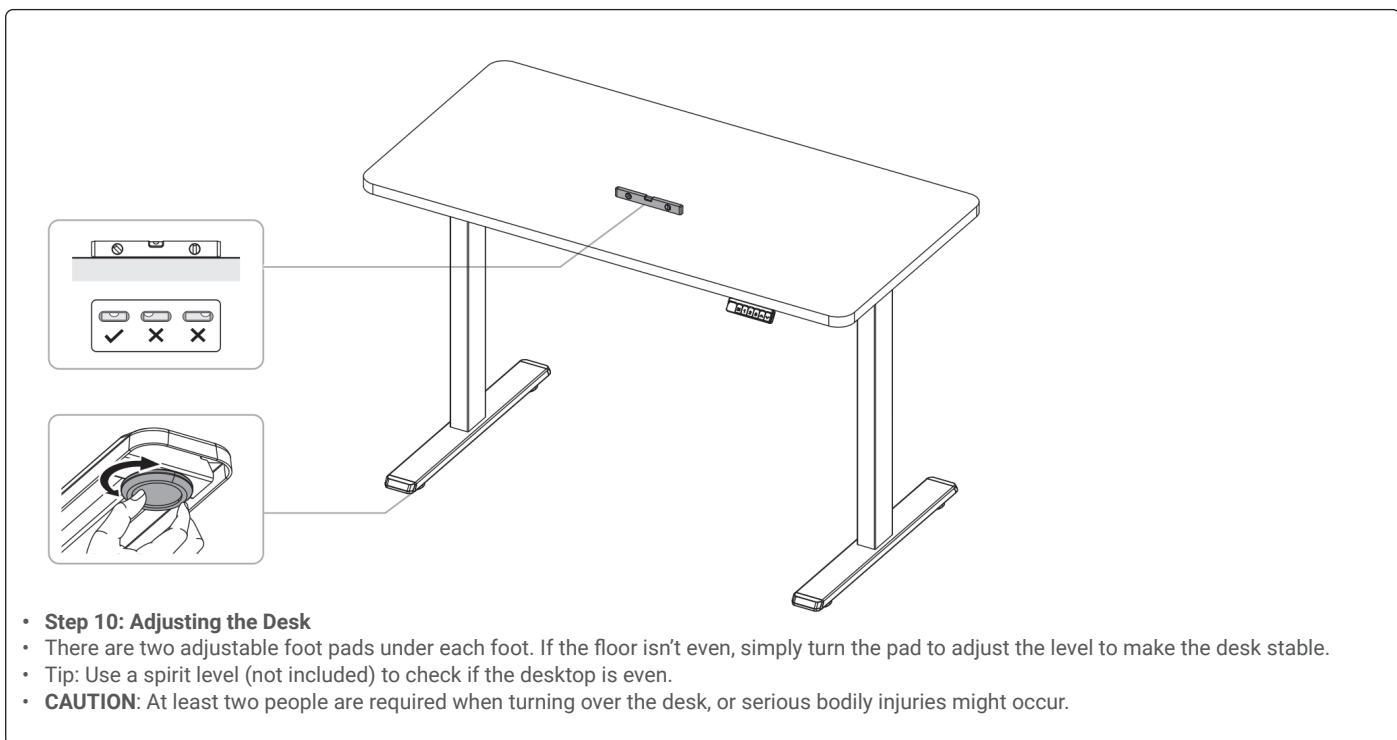
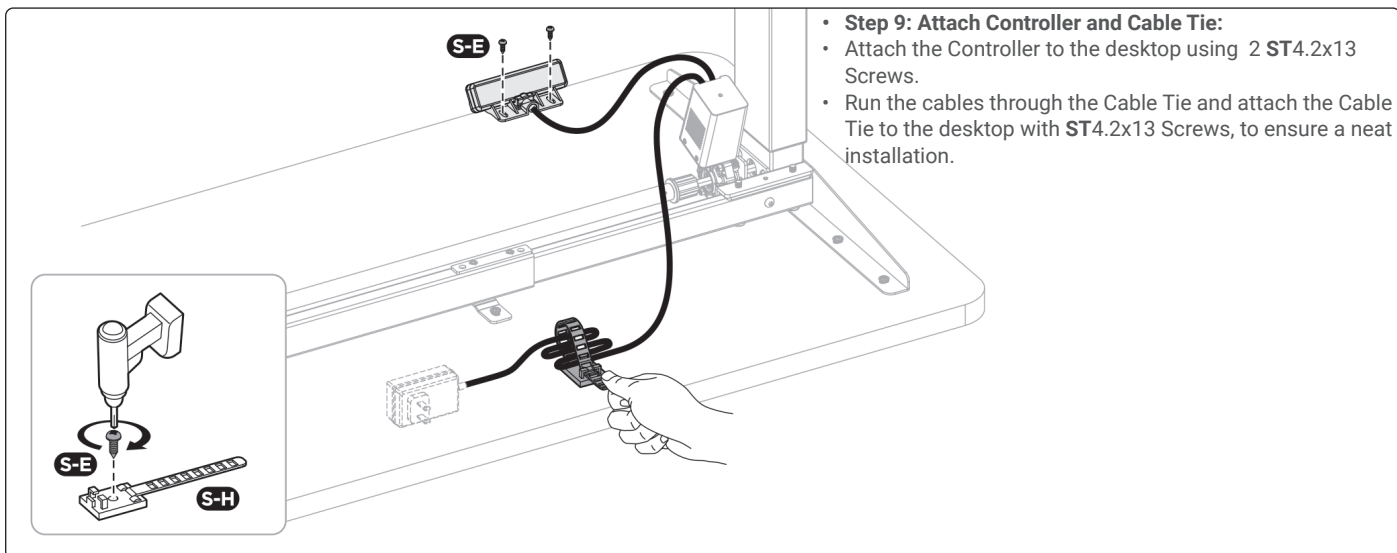


- **Step 7: Attach the Desktop**
- Attach the assembled desk frame through the mounting holes located on the Side Brackets and Crossbar as shown below. Use 10 ST4.2x16 Screws S-F.



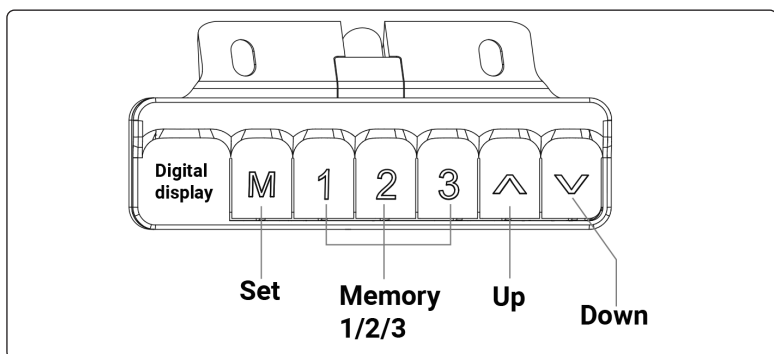
- **Step 8: Connect Cables**
- Connect the Controller I with the AC Adaptor H and Motor as shown. **NOTE: DO NOT** connect to mains power supply until the desk is fully assembled.





Operation

- **NOTE:** Using the desk for the first time, you will need to reset the system.
- **RESET THE SYSTEM:**
- If the system malfunctions or the control panel displays "RST", reset the system.
- **RESET PROCEDURE:**
- Press and hold the **DOWN** button until the motor stops, then release the button. Press and hold the **DOWN** button again for 5 seconds and the system will automatically enter the reset mode. (**DO NOT** release the **DOWN** button at this point or the system will exit reset mode).
- You will hear a beep to indicate that the reset process is complete.
- If the table has reached the lowest position but the reset mode is not triggered, press and hold the **UP** and **DOWN** buttons simultaneously for 10 seconds to force entry into the reset mode. At this point, press and hold the **DOWN** button to start the reset.
- **HEIGHT ADJUSTMENT:**
- . Press and hold the **UP/DOWN** buttons to lift/lower the desk to your desired height.
- . Short press the **UP/DOWN** buttons to life/lower the desk precisely.
- **MEMORY SETTING:**
- To store a memory position, press the **M** button, the display will show **S-** and the **"-"** will flash. Then, press button 1/ 2/ 3 to store the current position.
- There are two modes to call a stored position: automatic mode (S-6 is set to "1") and semi-automatic mode (S-6 is set to "0"). (See Part 5. Custom Programming Guide)
- To recall a previously stored position in automatic mode (S-6 is set to 1), press the button 1 / 2 / 3 once, the display will show the height of the corresponding stored position and the desk will start moving to the desired memory position.



- Press any button to stop the movement.
- To recall a previously stored position in semi-automatic mode (S-6 is set to 0), press and hold the 1/ 2/ 3 button, the display will show the height of the corresponding stored position and the desk will start moving to the desired memory position. Release the 1/ 2/ 3 button to stop the movement.
- **POWER-SAVING MODE:**
- The system will enter into power-saving mode with display becomes dark when unused for over 1 minute.
- Touch any button to activate the control panel.
- **CUSTOM PROGRAMMING GUIDE:**
- Press and hold the "M" button for 5 seconds to enter the setting mode. The display will show **S-x** and the x will flash.
- Press **UP/ DOWN** button to switch between different programming , press **M** button once to enter each programming.
- After setting the programming, press "M" to save.
- The following programming can be set:
- S-1: Switch between **CM** and **INCH**. 0 = the height unit is metric, 1 = the height unit is imperial.
- S-2: Function not used.
- S-3: To adjust anti-collision sensitivity (current sensor upward movement). 0 = off, 8 = the most sensitive, 1 = the least sensitive.
- S-4: To adjust anti-collision sensitivity (current sensor downward movement). 0 = off, 8 = the most sensitive, 1 = the least sensitive.
- S-5: To adjust the display height of the lowest position.
- S-6: To switch between automatic mode (S-6 is set to 1) and semi-automatic mode (S-6 is set to 0).
- S-7: 0 means turning off the 2-minute/18-minute working system and relying solely on temperature to protect the controller. 1 means turning on the 2-minute/18-minute working system.
- S-8: Function not used.

Troubleshooting

Error No.	Fault	Solution
E01	Power supply voltage is too high	Check power supply
E02	Columns don't move together	Reset the system
E04	Control panel is disconnected	Check the connection
E05	Collision avoidance system has activated	Remove the plug from the control panel and reinsert the plug, to check the connection
E06	Failure to start due to low power supply voltage	Find an alternative mains supply or turn mains supply off/on
E07	Controller enters protective mode when power supply voltage is low	Turn mains supply off/on
E08	Desktop tilts during operation	Reset the system
HOT	Power supply overheats, or overheat protection is activated because the system is operated for more than 2 cumulative minutes in any 18 minute period.	Wait for mains supply temperature to cool, allow desk to sit idle for 18 minutes approx.
E12	Electrical problem has occurred	Replace control panel
E13	Motor wires may be broken	Remove and reinsert motor wires to check the connection
E15	Short circuit	Replace the motor
E16	Motor fails to drive	Reset the system
E18	Overload has occurred	Remove the load from the desktop
E42	Memory can not be read	Replace the control box



Environment Protection, Waste Electrical and Waste Electronic Equipment Regulations (WEEE)



Recycle unwanted packaging materials. When this product is no longer required, or has reached the end of its useful life, please dispose of in an environmentally friendly way. Drain any fluids (if applicable) into approved containers, in accordance with local waste regulations.



Please note that this product contains one or more batteries. It is our policy to continually improve products and we reserve the right to alter data, specifications and parts without prior notice. No liability is accepted for incorrect use of this product. Guarantee is 12 months from purchase date, proof of which is required for any claim.



Dellonda

Sealey Group, Kempson Way, Suffolk Business Park, Bury St Edmunds, IP32 7AR



01284 757575



support@dellonda.co.uk



www.dellonda.co.uk