



## Single Motor Ultra-Quiet Adjustable-Height Electric Sit/Stand Desk - White Desktop



### **Model No. DH56.V2**

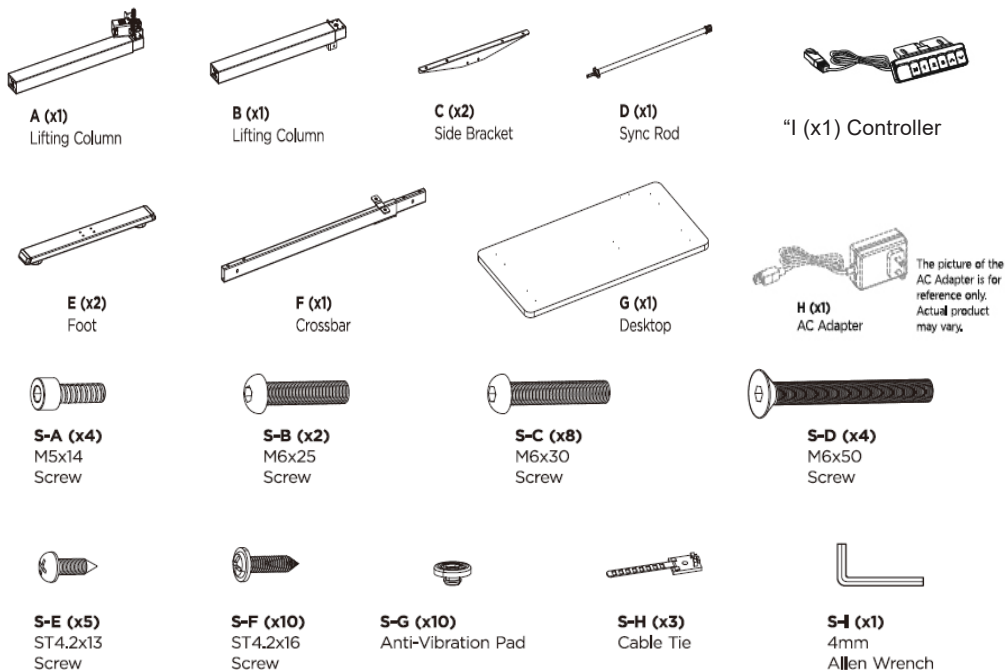
Thank you for purchasing a Dellonda product. Manufactured to a high standard, this product will, if used according to these instructions, and properly maintained, give you years of trouble free performance.

## Important Information

Please read these instructions carefully and note any safe operational requirements, warnings & cautions. Use the product correctly and with care for the purpose for which it is intended. Failure to do so may cause damage and/or personal injury and will invalidate the warranty. Keep these instructions safe for future use.

## Contents

Please check all of the components shown in the content checklist are not missing or damaged. If any components are damaged or missing contact your place of purchase for a replacement.



### TOOLS REQUIRED TO ASSEMBLE DESK FRAME



## About the Product

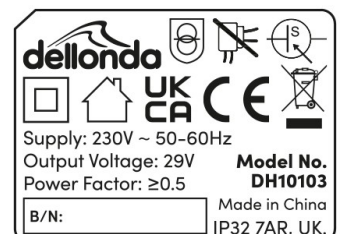
Gives a large working space of (W x D): 1200 x 600mm for office, school or home use. Ergonomic design helps to reduce the most common complaint of office workers who sit all day. With a control panel enabling you to reach your desired height with the push of a button. Single motor system ensures a fast and stable adjustment. Features ultra-quiet operation with a sound level less than 51dB. Height range from 740 to 1220mm to maximise comfortability while in use.

## Specification

- Maximum Load Capacity: 70kg
- Speed: 25mm/s
- Desktop dimensions 1200 x 600mm
- Height Range: 740-1220mm
- Nett Weight: 28.3kg
- Noise Level: <51dB
- Operation temperature: -5°C - + 40°C
- Product Dimensions (W x D x H): 1200 x 600 x 1220mm (Maximum)
- Plug Type: 3-Pin
- Supply 230V

## Transformer information

- This electrical transformer is designed to transfer electrical energy efficiently between circuits through electromagnetic induction. In this case, the transformer has an output voltage of 230V, supplying a load with 29V at a power factor of 0.5. This indicates that the electrical system is operating with a relatively low efficiency, as the power factor suggests significant reactive power in the circuit. The transformer steps down voltage while maintaining power balance, ensuring proper distribution and usage of electrical energy.



## Safety Instructions

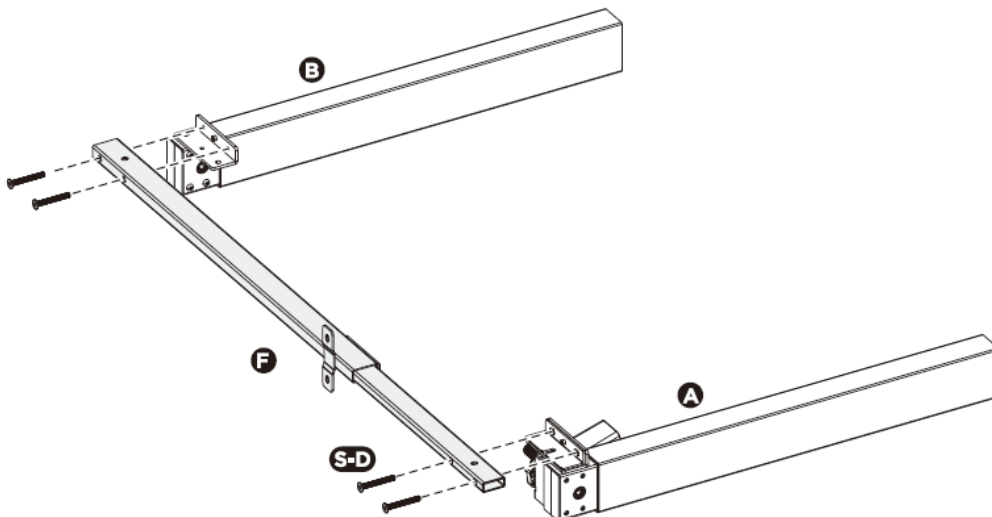
### • ELECTRICAL SAFETY

- **WARNING!** It is the user's responsibility to check the following:
- Check all electrical equipment and appliances to ensure that they are safe before using.
- Inspect power supply leads, plugs and all electrical connections for wear and damage.
- Ensure that the insulation on all cables and on the appliance is safe before connecting it to the power supply.
- **DO NOT** use worn or damaged cables, plugs or connectors.
- Ensure that any faulty item is repaired or replaced immediately by a Sealey qualified technician.
- If the cable or plug is damaged during use, switch off the electricity supply and remove from use.
- Sealey recommend that an **RCD** (Residual Current Device) is used with all electrical products.
- **IMPORTANT:** Ensure that the voltage rating on the appliance suits the power supply to be used and that the plug is fitted with the correct fuse.
- **DO NOT** pull or carry the appliance by the power cable.
- **DO NOT** pull the plug from the socket by the cable.
- **DO NOT EXCEED MAXIMUM LISTED WEIGHT CAPACITY.**
- Unplug the power source before cleaning. Wipe the dust on surface with slight damp cloth when cleaning, **DO NOT** get water in the electrical housing, be careful not to loosen any cables.
- Cleaning and user maintenance on the appliance shall not be made by children without supervision.
- Check carefully to ensure correct and complete assembly before use.
- Familiarise yourself with all functions and program settings of the product before first use.
- **DO NOT** let children play on the product.
- Slight noise caused by the V-ribbed belt or brake system will not have any effect on the use of the equipment.
- **DO NOT** clean the unit with corrosive or abrasive materials, or whilst connected to the mains.
- This appliance can be used by children aged from 8 years and above and persons with reduced physical, sensory or mental capabilities or lack of experience and knowledge if they have been given supervision or instruction concerning use of the appliance in a safe way and understand the hazards involved. Children shall not play with the appliance.
- If the supply cord is damaged, it must be replaced by the manufacturer, its service agent or a similarly qualified person in order to avoid a hazard and prolong the life of the equipment.
- **ALWAYS** make sure there are no hazards in the operating environment. e.g., nothing that will get hooked up on the desk, or stop the desk from raising or lowering fully.
- Keep the original instructions, for future reference.
- **ALWAYS** inspect the unit prior to use for fatigue and damage.
- Always be careful with the packaging materials in order to avoid any possible danger, e.g. plastic bag may lead to choking hazard to children
- Keep the original packaging of the equipment if necessary in case of the future use in transportation.

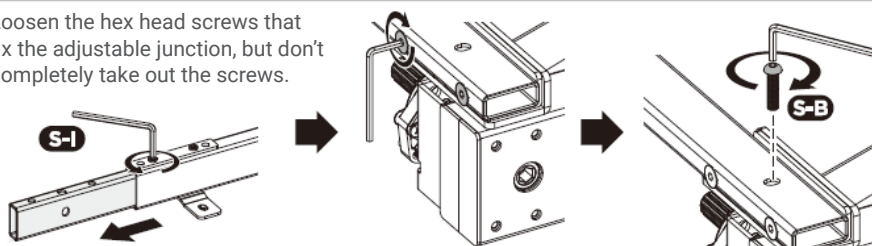
### • Assembly

#### 1. Attaching the Crossbar

- Attach the crossbar **F** to the lifting columns **A/B** using **4 M6x50 screws S-D** and **2 M6x25 screws S-B** as shown in illustration.

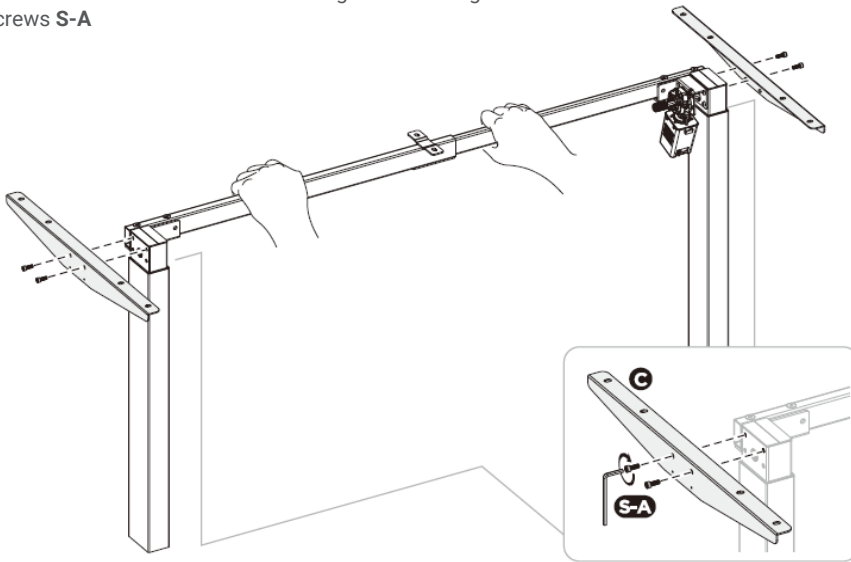


- Loosen the hex head screws that fix the adjustable junction, but don't completely take out the screws.



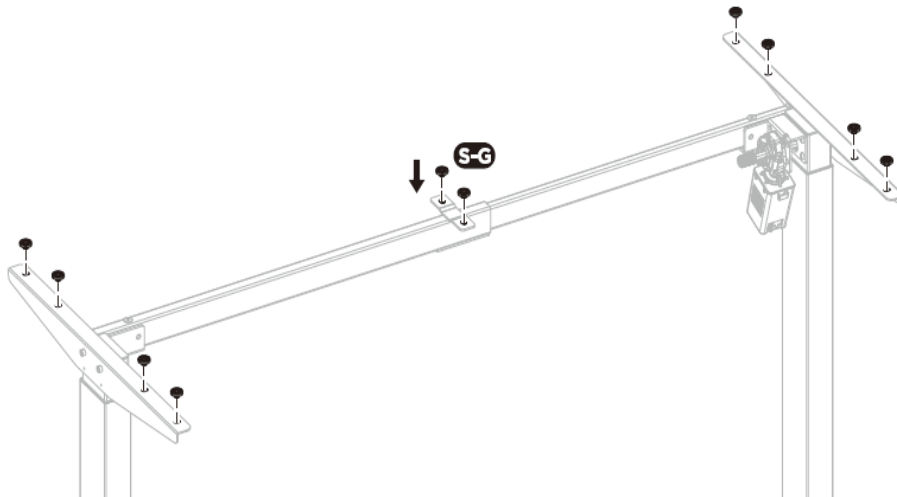
## 2. Attaching the Side Brackets

- Attach the Side Bracket **C** to the Lifting column using the 4 **M5x14** screws **S-A**



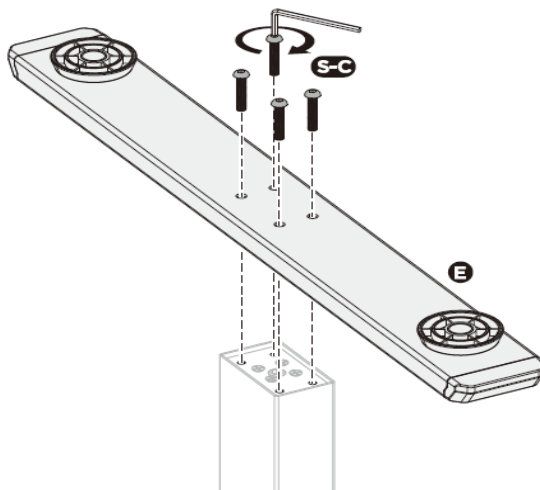
## 3. Attaching the Anti-Vibration Pads

- Attach the Anti Vibration Pads **S-G** to the surface of the crossbar on the ten positions as shown.



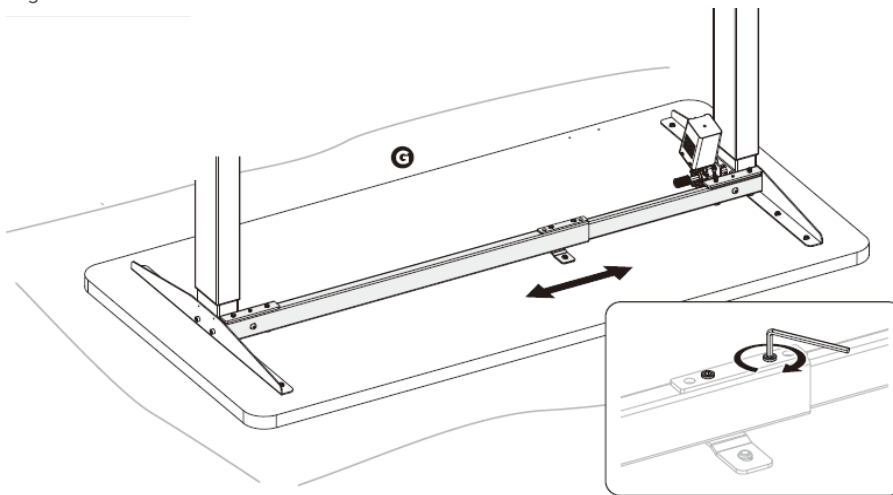
## 4. Attaching the Feet

- Place the Lifting Columns A/B upside down on the floor.
- Attaching the foot **E** to the lifting column using 4 **M6x30** screws **S-C**.
- Repeat the same process to attach the other foot.



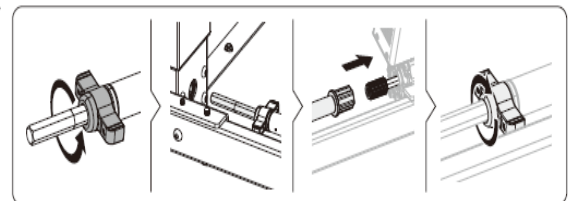
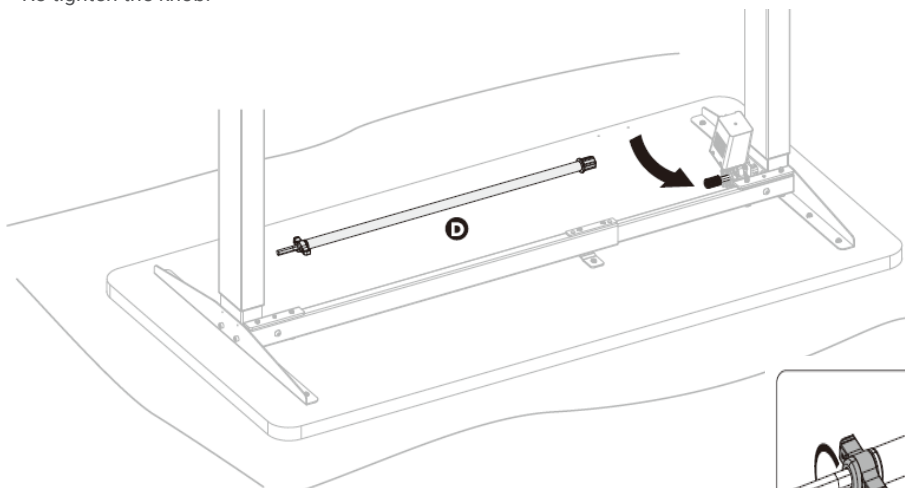
## 5. Adjusting the Frame

- Carefully place the desktop G upside down on a blanket.
- Place the legs one on each side of the top as shown below.
- Adjust the crossbar to the size of the desktop. Ensure that the frame is placed in the centre of the desktop.
- Tighten the screws on the crossbar.



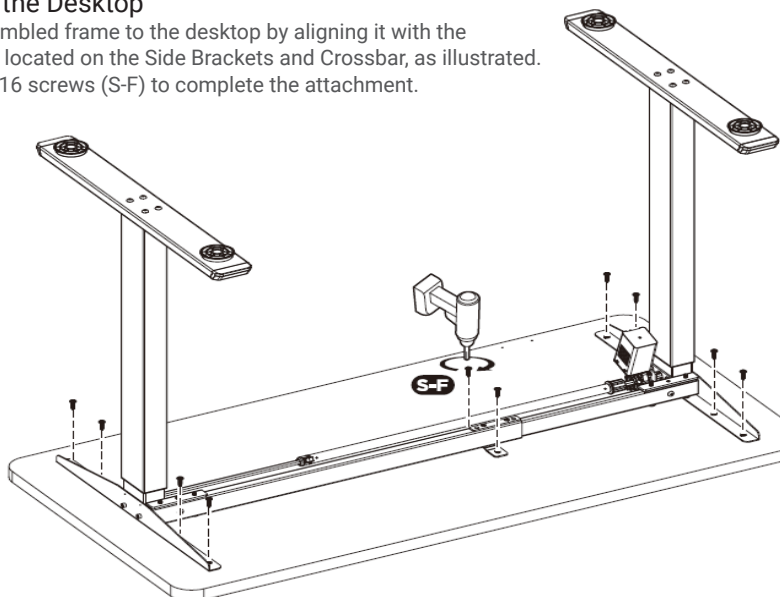
## 6. Attaching the Sync Rod

- Turn the knob as shown to loosen and adjust the Sync Rod D.
- Insert both ends of Sync Rod into holes found on the desk frame as shown in illustration.
- Re-tighten the knob.



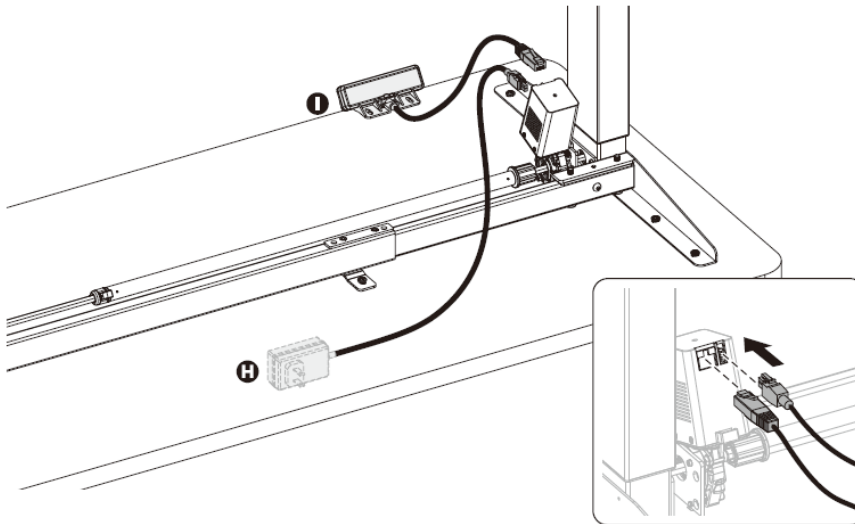
## 7. Attaching to the Desktop

- Attach the assembled frame to the desktop by aligning it with the mounting holes located on the Side Brackets and Crossbar, as illustrated. Use 10 **ST4**, 2 x16 screws (S-F) to complete the attachment.



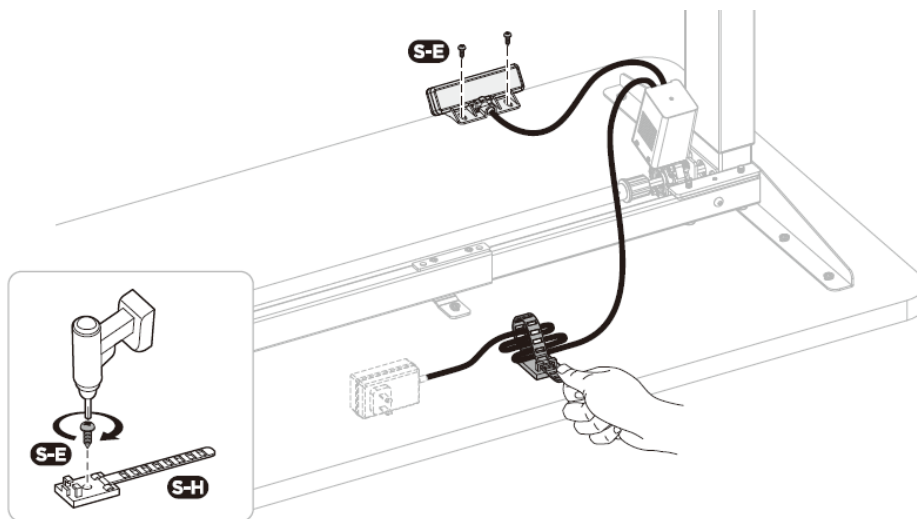
## 8.Connecting Cords

- Connect the controller **I** with the **AC Adapter H** and the motor as shown.
- **NOTE: DO NOT** plug into the mains before the desk is fully assembled.



## 9.Attaching the Controller and Cable Tie

- Attach the Controller to the desktop using **2x S-E screws (ST4.2x13)**
- Run the cables through the Cable Tie **S-H** and attach the Cable Tie to the desktop with a S-E Screw (**ST4.2X13**) ensure clean and neat surface.

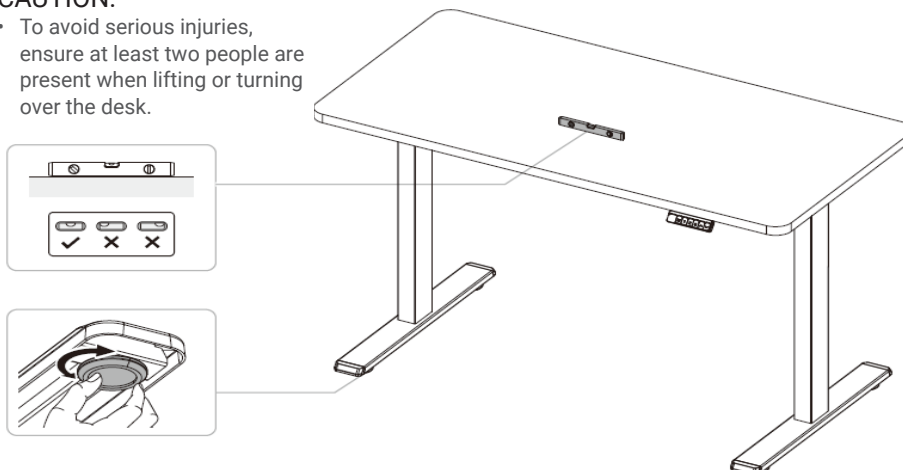


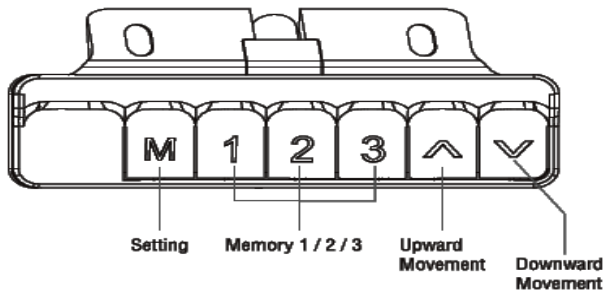
## 10.Adjusting the Desk

- There are two adjustable foot pads under each foot. If the floor isn't even, simply turn the pad to adjust the level to make the desk stable.
- Check the desk is level using a spirit level (not included).

### CAUTION:

- To avoid serious injuries, ensure at least two people are present when lifting or turning over the desk.





## Operating Instructions for the Control Panel

**NOTE:** Using the desk for the first time, you will need to reset the system.

### • RESET THE SYSTEM

- If the system malfunctions or the control panel displays "RST", reset the system. Reset procedure: Press and hold the "v" button until the motor stops, then release the button. Press and hold the "v" button again for 5 seconds and the system will automatically enter the reset mode. (Do not release the "v" button at this point or the system will exit reset mode). You will hear a beep to indicate that the reset process is complete.
- If the table has reached the lowest position but the reset mode is not triggered, press and hold the "v" and "^" buttons simultaneously for 10 seconds to force entry into the reset mode. At this point, press and hold the "v" button to start the reset.

### • HEIGHT ADJUSTMENT

- Press and hold the "^" / "v" button to lift/lower the desk to your desired height.
- Short press the "^" / "v" button to lift/lower the desk precisely.

### • MEMORY SETTING:

- To store a memory position, press the "M" button, the display will show "S-" and the "-" will flash. Then, press button 1 / 2 / 3 to store the current position.
- There are two modes to call a stored position: automatic mode (S-6 is set to "1 ") and semi-automatic mode (S-6 is set to "0").
- To recall a previously stored position in automatic mode (S-6 is set to 1 ), press the button 1 / 2 / 3 once, the display will show the height of the corresponding stored position and the desk will start moving to the desired memory position. Press any button to stop the movement.
- To recall a previously stored position in semi-automatic mode (S-6 is set to 0), press and hold the 1 / 2 / 3 button, the display will show the height of the corresponding stored position and the desk will start moving to the desired memory position. Release the 1 / 2 / 3 button to stop the movement.

### • POWER-SAVING MODE:

- The system will enter into power-saving mode when the display turns off, after no actions have been performed for over 1 minute.
- Touch any button to activate the control panel.

### • CUSTOM PROGRAMMING GUIDE:

- Press and hold the "M" button for 5 seconds to enter the setting mode. The display will show "S-x" and the "x" will flash. Press "^" / "v" button to switch between different programming , press "M" button once to enter each programming. After setting the programming, press "M" to save.

### THE FOLLOWING PROGRAMMING CAN BE SET

S-1	To switch between CM and INCH. "0" means the height unit is metric, "1" means the height unit is imperial.
S-2	The sensor's sensitivity to retract when encountering resistance.
S-3	To adjust anti-collision sensitivity (current sensor upward movement). "0" means off, "8" means the most sensitive, "1" means the least sensitive.
S-4	To adjust anti-collision sensitivity (current sensor downward movement). "0" means off, "8" means the most sensitive, "1" means the least sensitive.
S-5	To adjust the display height of the lowest position.
S-6	To switch between automatic mode (S-6 is set to "1 ") and semi-automatic mode (S-6 is set to "0").
S-7	"0" means turning off the 2-minute/18-minute working system and relying solely on temperature to protect the controller. "1" means turning on the 2-minute/18-minute working system.
S-8	Sensor responsiveness to tilt.

## TROUBLESHOOTING

Error code	Fault	Solution
E01	The power supply voltage is too high.	Check the power supply.
E02	The columns don't go together.	Reset the system
E04	The control panel is disconnected.	Check the connection.
E05	Collision avoidance system has activated.	Pull the plug out the control panel and re-plug to check the connection.
E06	Failure to start due to low power supply voltage.	Replace the power supply, or pull plug out of the power and re-plug to check the connection.
E07	Controller enters protective mode when power supply voltage is low.	Pull plug out of the power and re-plug to check the connection.
E08	The desktop tilts during operation.	Reset the system.
HOT	The power supply overheats, or the overheat protection is activated because the system is operated for more than 2 cumulative minutes in any 18-minute period.	Wait for the power supply temperature to cool, or stop using your desk and allow it to sit idle for approximately 18 minutes.
E12	Electrical problem has occurred.	Replace the control panel.
E13	Motor wires may be broken.	Pull out the motor connection wire and re-plug to check the connection.
E15	Short circuit.	Replace the motor.
E16	Motor fails to drive.	Reset the system.
E18	Overload has occurred.	Remove the items from the desktop.
E42	Memory can not be read.	Replace the control box.

### • STORAGE

Disassemble If extended storage is required, disassembly may be beneficial. Follow the assembly instructions in reverse for proper dismantling.

Keep It in a Dry Place – Moisture can damage the motor and electronic components, so store it in a dry, climate-controlled environment.

Avoid Heavy Stacking – Do not place heavy objects on top of the desk, especially if it has a motorised mechanism.

Protect the Surface – Use a cover or cloth to prevent dust accumulation and scratches.

Secure the Cables – If the desk has electrical components, ensure the cables are neatly wrapped and stored safely to prevent damage.

Store Upright – If possible, keep the desk in an upright position to avoid unnecessary pressure on the frame and motor.

### • END OF LIFE

Recycling: The desk contains metal, plastic, and electronic components that may be recyclable. Check with local recycling facilities for proper disposal.

Electronics Disposal: The single motor system and control panel should be disposed of as electronic waste (e-waste) at designated collection points.

Re-usability: If the desk is still functional, consider donating it to organizations or individuals who may benefit from its use.

Compliance: Follow local laws and guidelines regarding e-waste and furniture disposal to ensure environmentally friendly practices.



## Environment Protection, Waste Electrical and Waste Electronic Equipment Regulations (WEEE)



Recycle unwanted packaging materials. When this product is no longer required, or has reached the end of its useful life, please dispose of in an environmentally friendly way. Drain any fluids (if applicable) into approved containers, in accordance with local waste regulations.



Please note that this product contains one or more batteries. It is our policy to continually improve products and we reserve the right to alter data, specifications and parts without prior notice. No liability is accepted for incorrect use of this product. Guarantee is 12 months from purchase date, proof of which is required for any claim.

**Dellonda**

Sealey Group, Kempson Way, Suffolk Business Park, Bury St Edmunds, IP32 7AR



01284 757575



support@dellonda.co.uk



www.dellonda.co.uk