

# baridi

---

## Back-to-Wall Toilet with Soft Close Seat & Rimless Flush, White Gloss



### Model No: DH334

Thank you for purchasing a Dellonda product. Manufactured to a high standard, this product will, if used according to these instructions, and properly maintained, give you years of trouble free performance.

## Important Information

Please read these instructions carefully. Note the safe operational requirements, warnings & cautions. Use the product correctly and with care for the purpose for which it is intended. Failure to do so may cause damage and/or personal injury and will invalidate the warranty. Keep these instructions safe for future use.



Refer to  
instruction  
manual

## SPECIFICATION

MODEL NO:	<b>DH334</b>
Colour of Product:	White
Drainage Distance:	180mm
Flush Method:	Rimless

Nett Weight:	27kg
Pan Height:	400mm
Product Dimensions (W x D x H):	360 x 520 x 400mm
Type:	Back to Wall

## CONTENTS

Back-to-Wall Toilet	1
Soft Close Seat	1
Hardware & Fixings	1

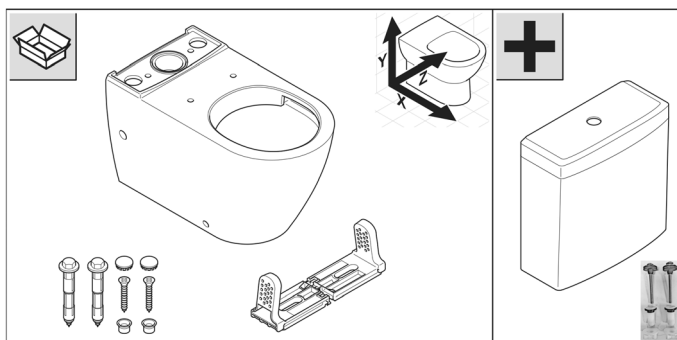
## TOOLS REQUIRED (not supplied)

Screwdriver	Spirit level	Spanner
Pencil	Drill	Adjustable grips
Drill bits	Hacksaw	Silicone sealant
Hammer	Pipe cutter	Tape measure
Hacksaw	Hex wrench	

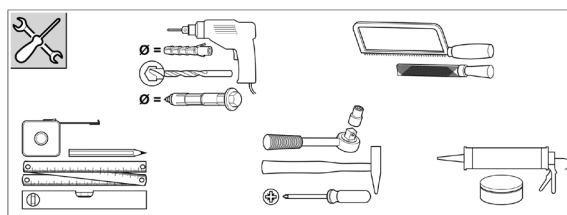
## IMPORTANT SAFETY INFORMATION

- ✓ **Check for damage:** Inspect the product immediately for visible damage (cracks, chips,). **DO NOT** install a damaged product. Report any issues to the supplier.
- ✓ **Lift with care:** The product may be heavy or awkward to carry. Use two people and proper lifting technique to avoid strain or injury.
- ✓ This product must be installed and maintained by a qualified plumber in accordance with local plumbing regulations and standards.
- ✗ **DO NOT** modify the toilet or cistern components. Unauthorised modifications may cause leaks, failure, or void the warranty.
- ✗ **DO NOT** overtighten fixing bolts or connections, as this may cause ceramic cracking or breakage.
- ✗ **DO NOT** place the toilet on hard or uneven surfaces without protective padding.
- ✗ **DO NOT** stand, kneel, or place excessive weight on the toilet.
- ✗ **DO NOT** dispose of non-flushable items (e.g. wipes, sanitary products, paper towels) as this may cause blockages or damage.
- ✗ **DO NOT** allow children to play with the toilet or components.
- ✓ Inspect all components before installation. **DO NOT** install if any part is cracked, damaged, or missing.
- ✓ Ensure the toilet is installed on a wall capable of supporting the required load.
- ✓ Always use the supplied seals, washers, and fixings. Substituting components may lead to leaks.
- ✓ Confirm that the water supply pressure complies

## CONTENTS



## TOOLS



## DH334



with the product specifications. Excessive pressure may damage internal fittings.

- ✓ Turn off the water supply before installation or maintenance to prevent flooding or water damage.
- ✓ This toilet is designed for domestic use only unless otherwise specified.
- ✓ Use only mild, non-abrasive cleaning agents. Abrasive or corrosive cleaners may damage the glaze and fittings.

## GENERAL HANDLING

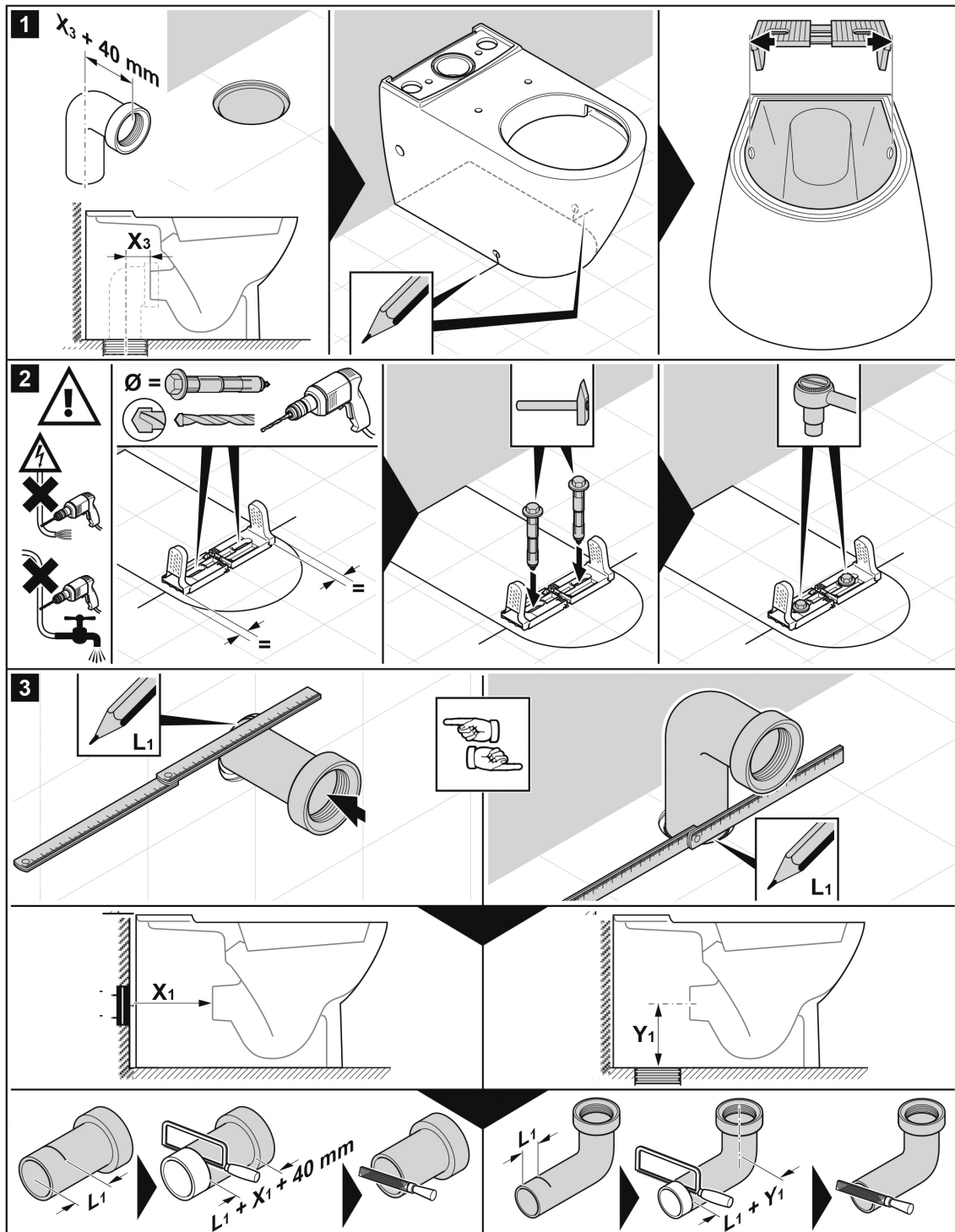
- ✓ Wear PPE: Use safety gloves and steel-toe footwear when handling the product or tools.
- ✓ Avoid impact: This product can crack or shatter if dropped. Always handle with care.
- ✓ Keep packaging away from children: Plastic bags and packaging materials are suffocation hazards.

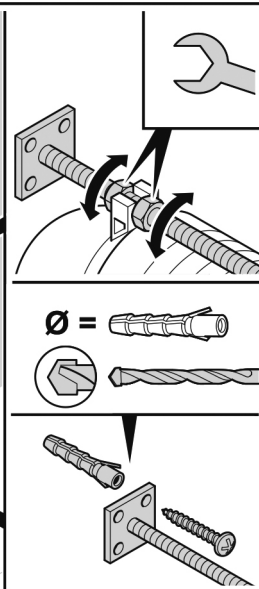
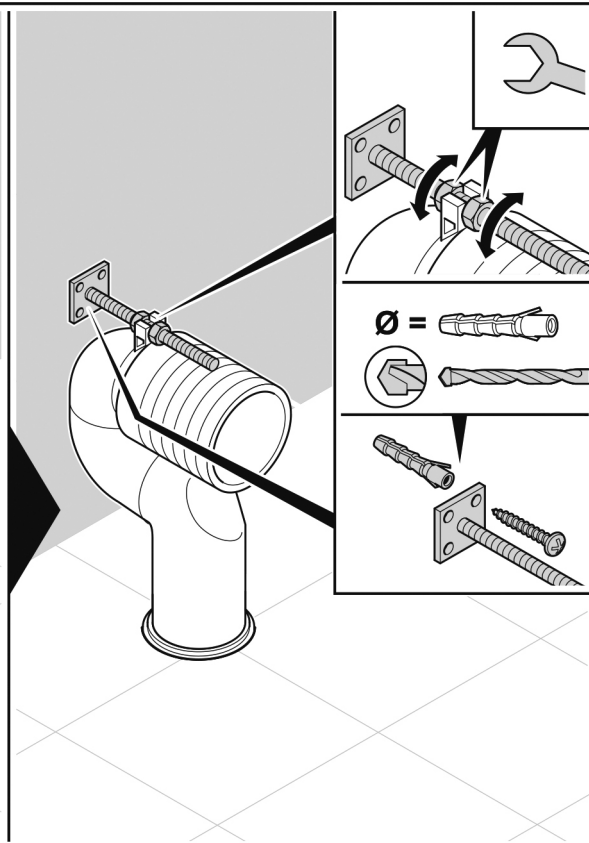
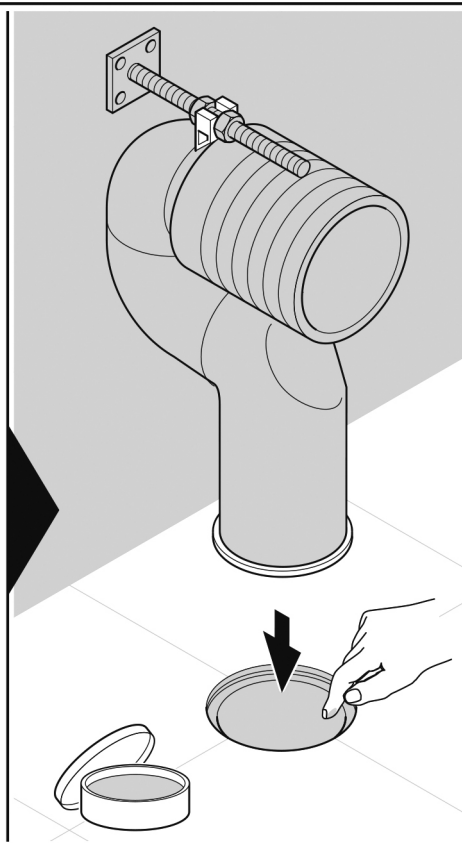
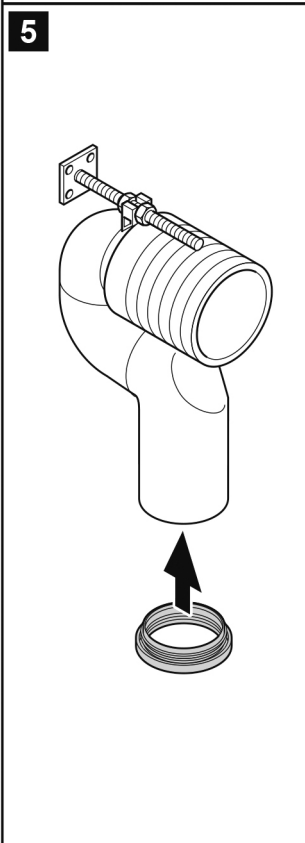
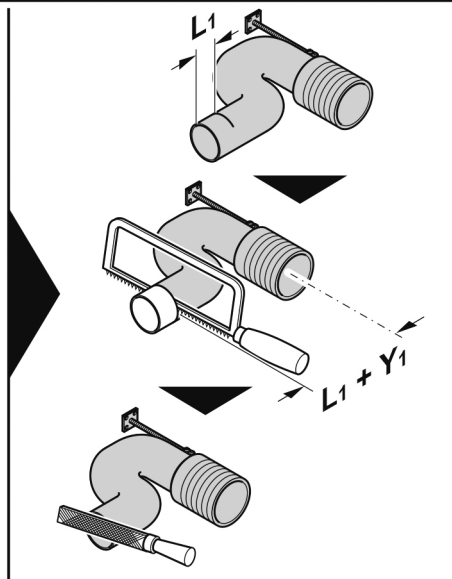
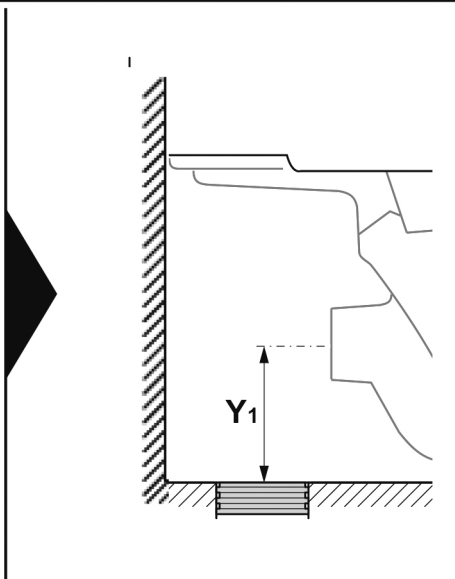
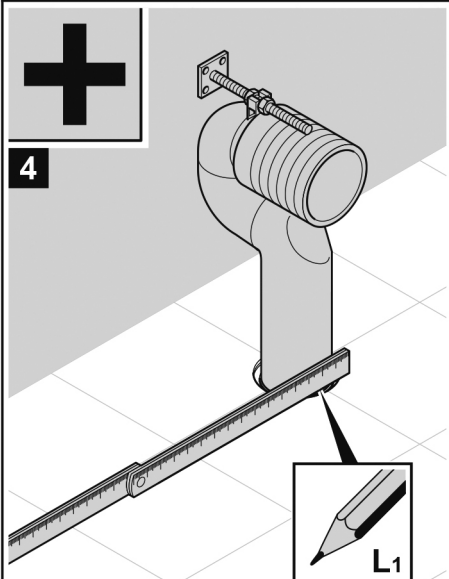
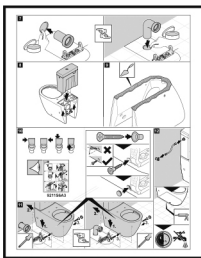
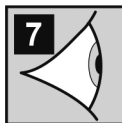
## INSTALLATION

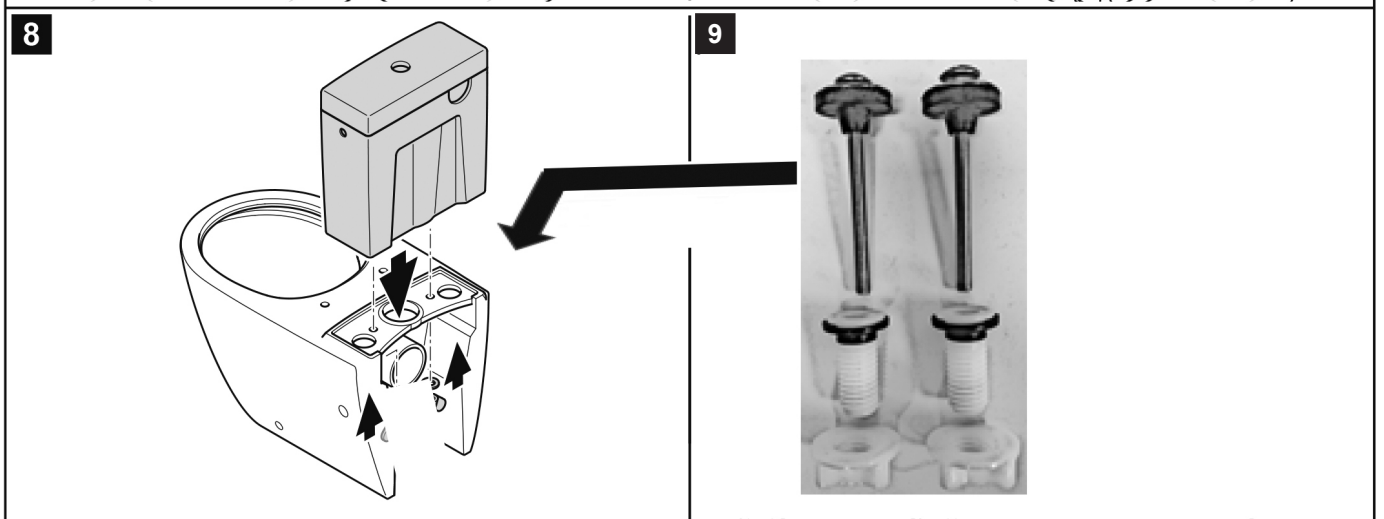
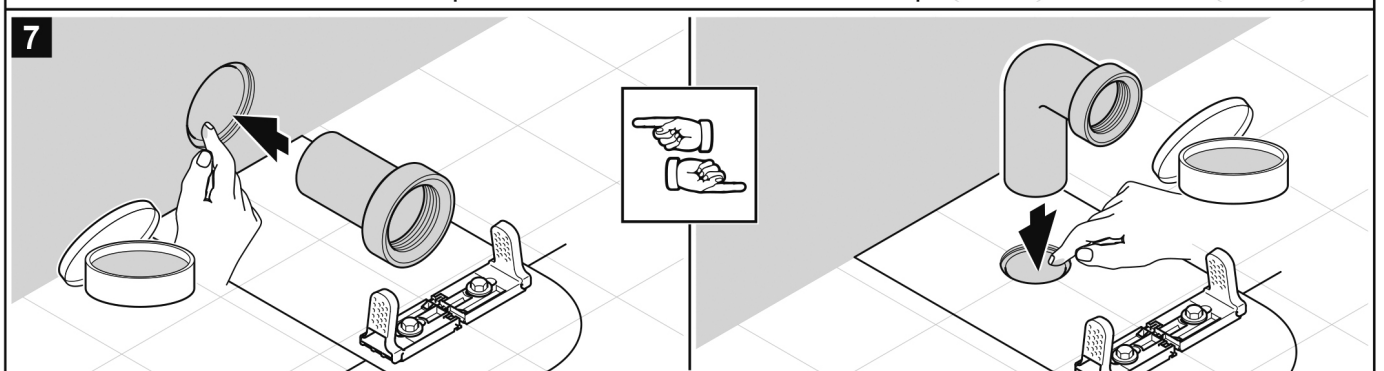
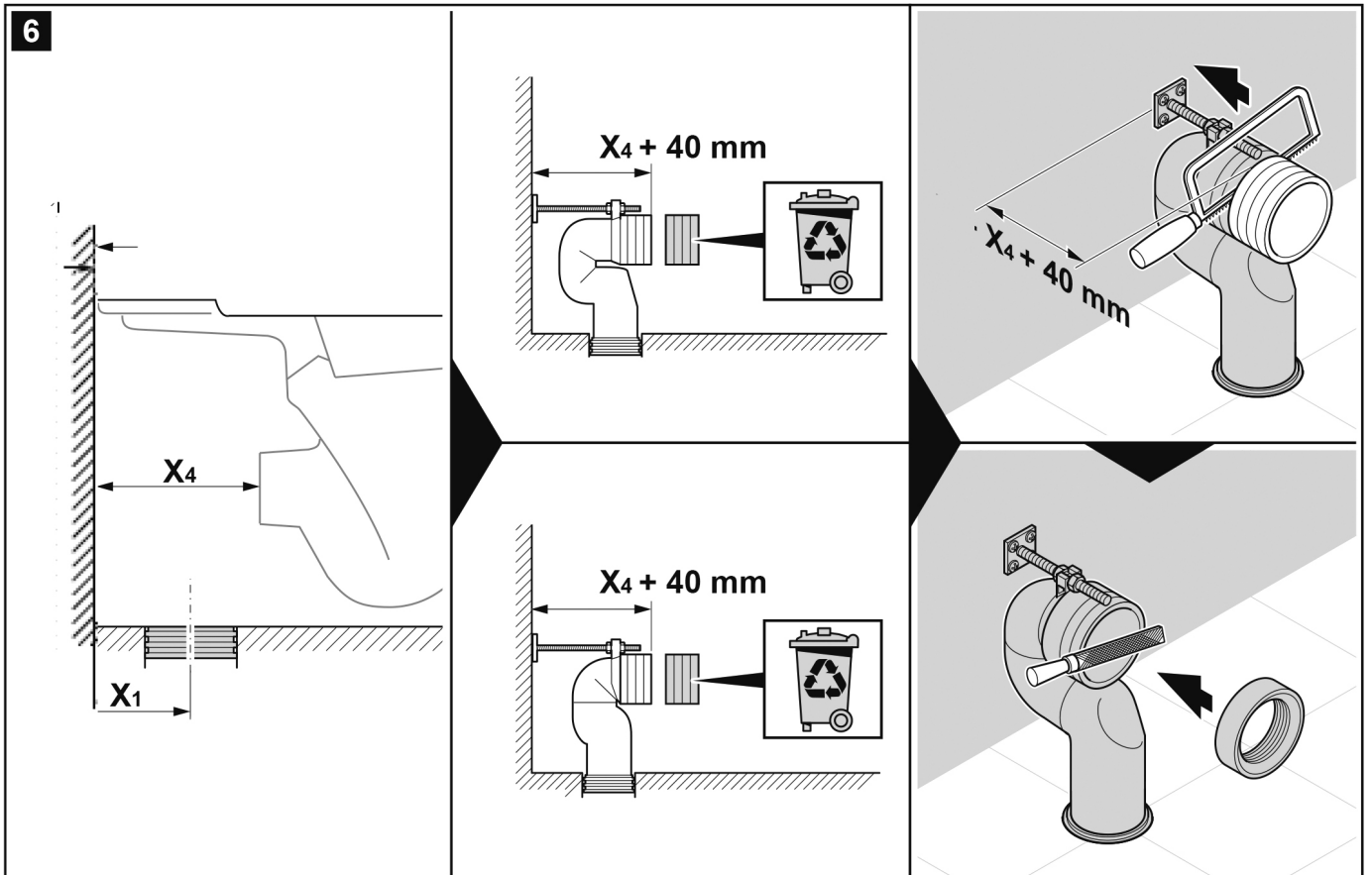
Please read these installation procedures carefully and familiarise yourself with all components before beginning. Upon receipt of the toilet, inspect the product immediately and thoroughly for any signs of transit damage or manufacturing defects. **DO NOT** proceed with installation if any issues are identified; contact your supplier for guidance. The toilet is supplied with protective packaging—carefully check all ceramic surfaces for damage. Ensure all required parts, fittings, and accessories are present before starting the installation process.

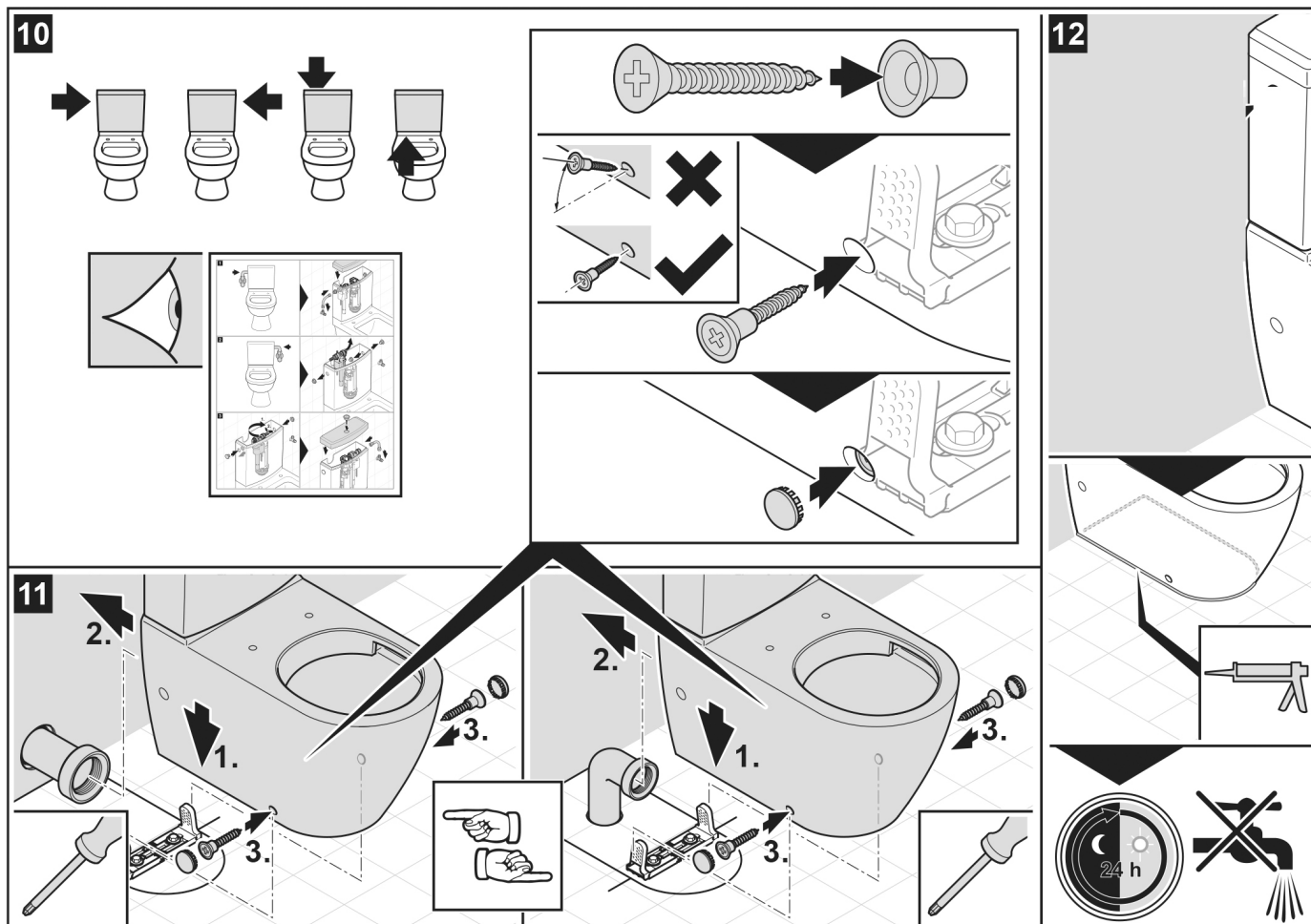
**IMPORTANT:** Isolate the water supply before commencing any installation work.

**IMPORTANT:** Where practicable and safe to do so, leak testing should be carried out progressively throughout the installation process.









## MAINTENANCE

With regular care, your product will retain its shine for many years. For daily cleaning, use a soft, non-abrasive cloth or sponge. If you prefer a cleaning agent, a standard, general-purpose cleaner works best. The product is resistant to acids and alkalis commonly found in households, as well as cosmetic and medical products containing solvents, alcohol, or acetone.

However, avoid aggressive cleaners that may harm the environment. Do not use scouring creams or powders, highly concentrated drain cleaners, specialized metal or tap cleaners, or chlorine-based bleaching products, as these can damage the surface. Microfibre cloths are ideal for cleaning, dampen them before use for the best results.

## Environment Protection and Waste Protection

Recycle unwanted packaging materials. When this product is no longer required, or has reached the end of its useful life, please dispose of it in an environmentally friendly way. Drain any fluids (if applicable) into approved containers, in accordance with local waste regulations. It is our policy to continually improve products and we reserve the right to alter data, specifications and parts without prior notice. No liability is accepted for incorrect use of this product. Guarantee is 12 months from purchase date, proof of which is required for any claim.