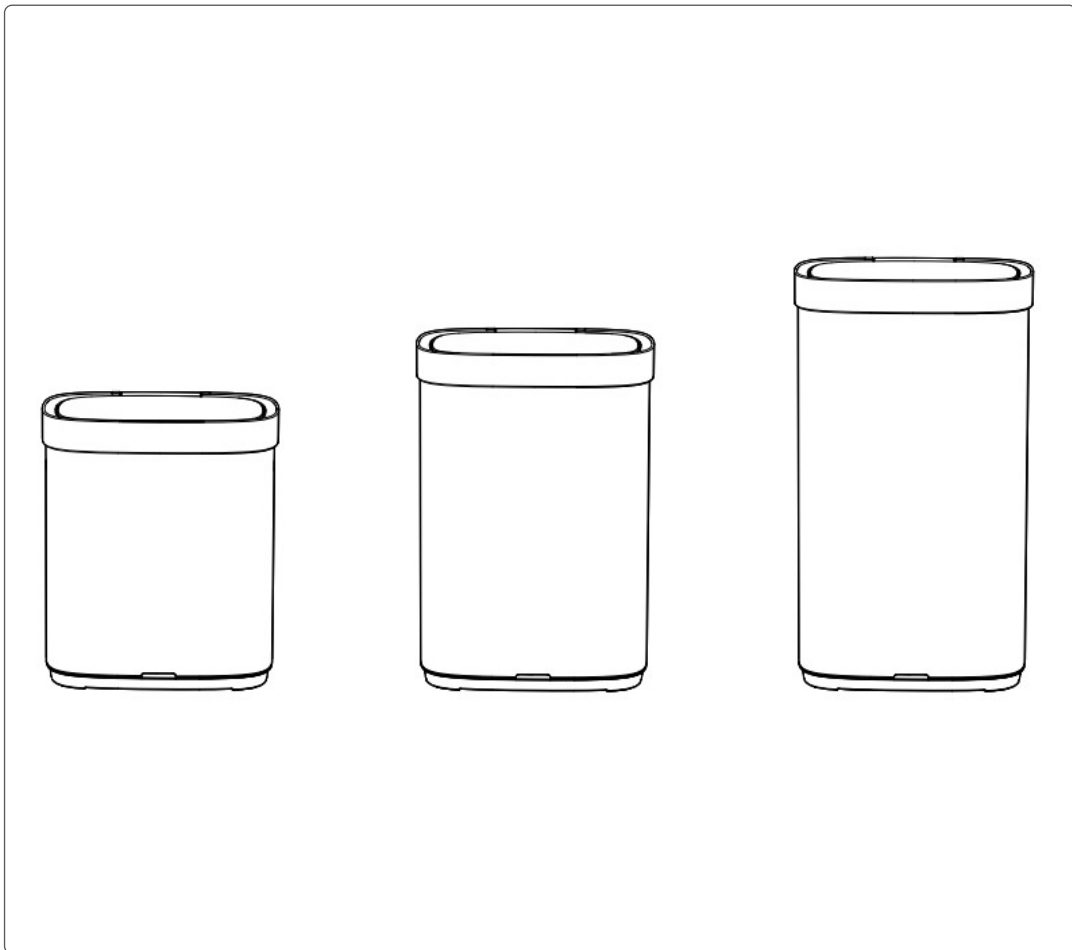




SENSOR BIN 50L/65L/80L - BLACK/STAINLESS STEEL



Model No: DH281, DH282, DH283

Thank you for purchasing a Baridi product from the Dellonda range. Manufactured to a high standard, this product will, if used according to these instructions, and properly maintained, give you years of trouble free performance.

Important Information

Please read these instructions carefully. Note the safe operational requirements, warnings & cautions. Use the product correctly and with care for the purpose for which it is intended. Failure to do so may cause damage and/or personal injury and will invalidate the 12 month warranty. Keep these instructions safe for future use.



Refer to
instructions

SAFETY

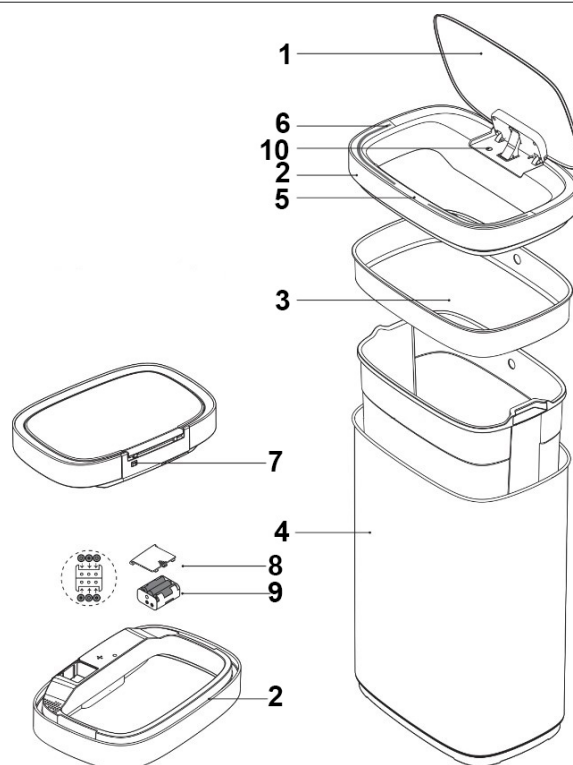
- Please read this manual carefully before using this product. It contains important safety information and recommendations for operation and maintenance. Please follow all safety instructions to avoid damage caused by improper use. Keep this manual for future use.
- If this product is transferred to a third party, the user manual must be included.
- For hygiene reasons, please use a suitable bin liner with the product.
- **WARNING! DO NOT** immerse the lid in water as this product contains electronic parts inside the lid.
- The inner bucket is not a toy. **DO NOT** put it over your head or there will be a choking hazard.
- Keep the original packaging for storage of the product.
- Please use alkaline batteries.
- Avoid mixing different types of batteries or mixing the old with the new ones.
- Please remove the batteries from the battery compartment if the device is not used for a long time.
- Fully discharged batteries should be removed from the battery compartment to avoid electrolyte leakage.
- Please remove the battery from the battery compartment immediately if leakage has occurred.
- Note that battery fluids are corrosive. Batteries should be kept away from fire as they may explode or leak.

SPECIFICATION

MODEL NO:	DH281	DH282	DH283
Capacity:	50L	65L	80L
Colour of Product:	Black	Black	Black
Nett Weight:	3.78kg	4.28kg	4.8kg
Product Dimensions (W x D x H):	44 x 29.8 x 51.5cm	44 x 29.8 x 64cm	44 x 29.8 x 77.5cm
Supply:	6 x AA Alkaline Batteries (not included)	6 x AA Alkaline Batteries (not included)	6 x AA Alkaline Batteries (not included)

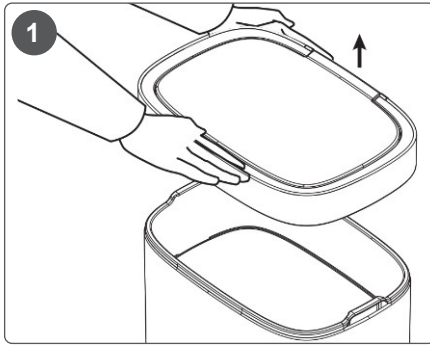
OVERVIEW

1	Flap
2	Lid
3	Retainer Ring
4	Body
5	Sensor
6	Indicator Light
7	Switch
8	Battery Cover
9	Battery Box
10	Inner Bucket (when included)



PREPARATION

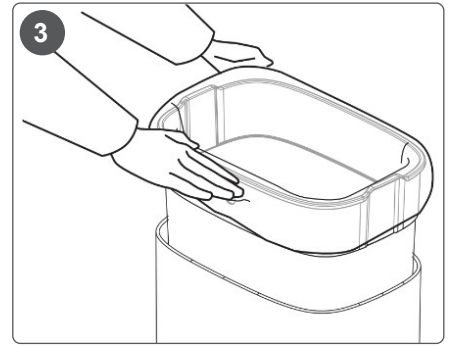
1. BIN LINER INSTALLATION



Remove the whole lid.

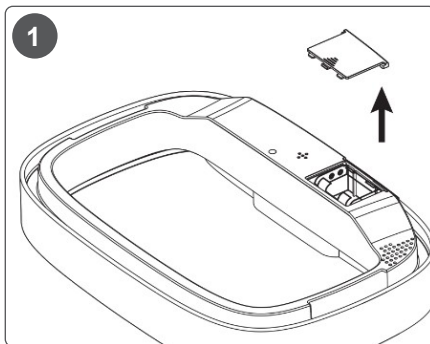


Fix the bin liner onto the inner bucket or sleeve if bucket not included.

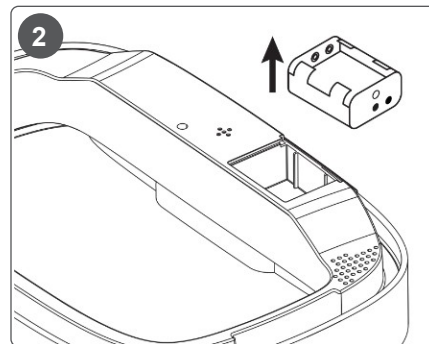


Place the inner bucket back into the body. Make sure the bag is well tucked and neatly concealed before replacing the lid.

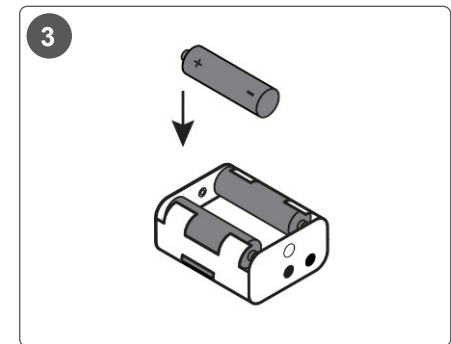
2. BATTERY INSTALLATION



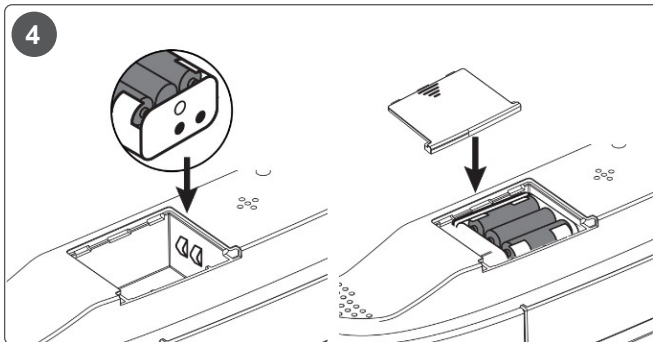
Open the cover of the battery box on the underside of the lid.



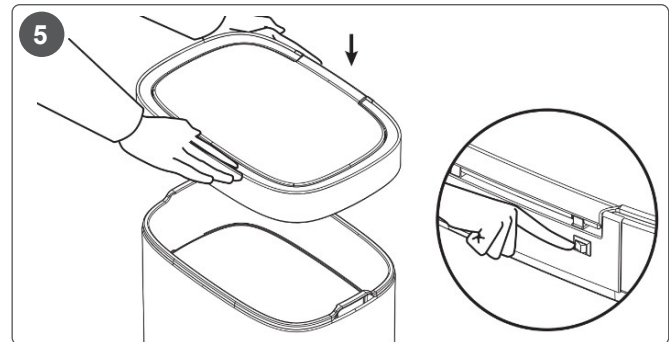
Pull the cloth belt to pull the battery box out.



Insert 6 batteries (3 on each side) ensuring correct polarity.



Put the battery box back in place, ensuring the polarity contacts are touching the metal components. Replace battery cover.



Put the lid back in place. Turn on the switch and the bin is ready to use.

OPERATION

INITIAL POWER ON

After turning on the product for the first time, an aqua green light will flash 3 times, and a buzzer will sound 3 times.

BUZZER

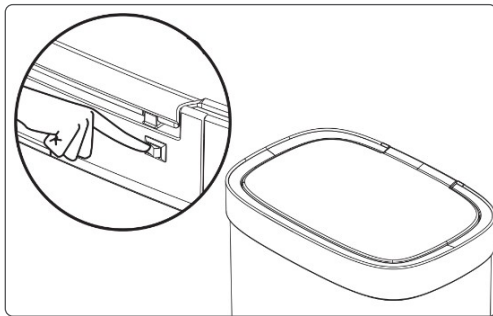
When operating, the buzzer sounds once to indicate low battery; when the buzzer sounds twice, it indicates that the device's power is too low to open and close the lid.



ATTENTION

The lid will open automatically if there is an object within 25cm±10cm above the sensing area. To avoid abnormal operation, **DO NOT** place anything within 50cm above the bin. **DO NOT** block the lid during opening or closing, otherwise the motor will be damaged.

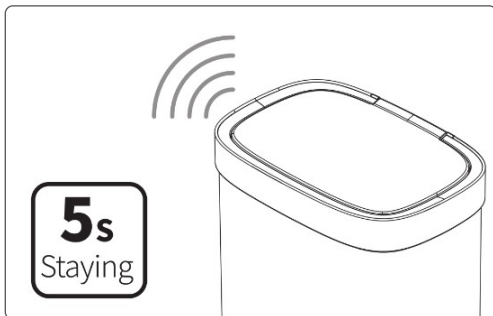
FUNCTIONS



1. START UP

Press the ON/OFF switch to turn the power on.

The indicator light will flash aqua green 3 times to indicate the product is on and ready for use.



2. WORKING MODE

Put your hand 25cm±10cm above the sensing area to open the lid automatically.

The indicator light will then flash blue 5 times and automatically close.

NOTE: the lid standing mode will be on if a hand or another object stays above the sensing area for more than 3 seconds. To release it, please follow the lid standing mode operation as below.



3. LID STANDING MODE

For long session use, put your hand above the sensing area for 3 seconds when the lid is open.

The indicator light flashes green to enter the lid standing mode.

Repeat the same action until the indicator light flashes green 3 times to exit the lid standing mode.

MAINTENANCE

Maintenance is to be performed when necessary to maintain correct and safe performance. Before conducting any maintenance work, turn off the product. All maintenance should be performed by an authorised service centre. Electrical repairs should **ONLY** be made by a qualified electrician. **DO NOT** use a faulty unit. Contact an authorised service centre for repair.

CLEANING

Turn off before cleaning. Regularly clean with a damp cloth, lukewarm water and mild detergent. **DO NOT** clean with abrasive materials or harsh chemicals. **DO NOT** spray water on the product, or allow water enter the battery compartment or internal components. **DO NOT** open enclosures to clean electrical parts.

STORAGE

Store the product in a cool, dry location. If the product is to be transported, first disassemble and place it in the original packaging.

DISPOSAL

Dispose of this product at the end of its working life in compliance with the EU Directive on Waste Electrical and Electronic Equipment (WEEE). When the product is no longer required, it must be disposed of in an environmentally protective way. Contact your local solid waste authority for recycling information.

TROUBLESHOOTING

If the below troubleshooting methods are not effective, please contact Sealey. **DO NOT** disassemble the original electronic parts in the barrel. Electrical repairs should **ONLY** be made by a qualified electrician.

FAULT	POSSIBLE CAUSE	POSSIBLE SOLUTION
No response to operations.	No power supply.	Check that the power is turned on, batteries are installed correctly and are fully charged.
Lid fails to open/close.	Obstruction in the cover or drive gear.	Remove any obstructions.
	Batteries are low.	Charge/replace the batteries.
	Motor failure.	Contact an authorised service centre for repair.
Sensor fails to function correctly.	Sensor blocked by foreign objects, grease or dust.	Remove obstructions and clean the sensor as per instructions.
Failure to close the lid automatically after opening.	Low ambient temperature will cause battery performance degradation.	Use appropriate batteries for cooler environments.
	The product is damaged.	Contact an authorised service centre for repair.
	Damaged motor due to opening/closing the lid by hand.	Contact an authorised service centre for repair.
	Electromagnetic interference.	Keep away from high-frequency electromagnetic products such as fridges and induction cookers.

ENVIRONMENT PROTECTION AND WASTE PROTECTION AND ELECTRICAL EQUIPMENT REGULATIONS (WEEE)

Recycle unwanted packaging materials. When this product is no longer required, or has reached the end of its useful life, please dispose of it in an environmentally friendly way. Drain any fluids (if applicable) into approved containers, in accordance with local waste regulations. Under the Waste Batteries and Accumulators Regulations 2009, we would like to inform the user that this product contains one or more batteries. It is our policy to continually improve products and we reserve the right to alter data, specifications and parts without prior notice. No liability is accepted for incorrect use of this product. Guarantee is 12 months from purchase date, proof of which is required for any claim.