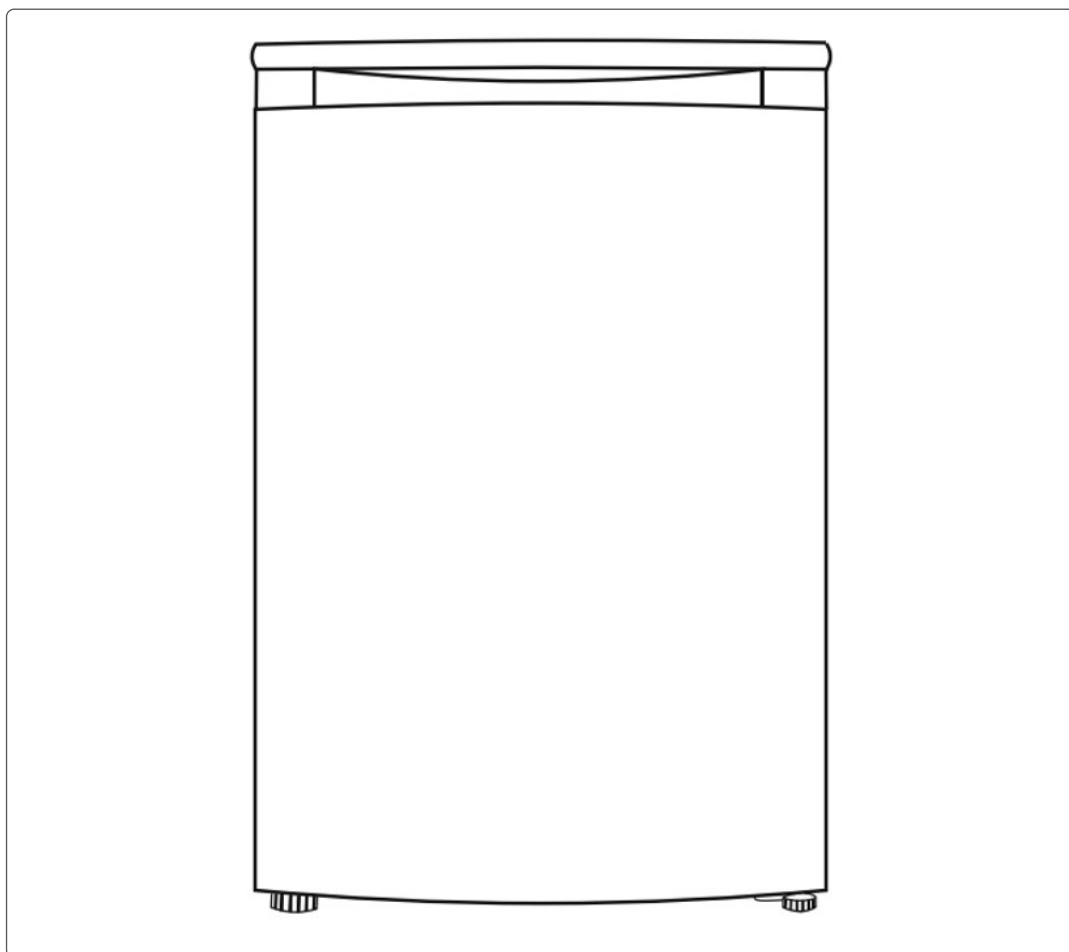




---

## BARIDI 55CM FREESTANDING UNDERCOUNTER FRIDGE WITH ICE BOX, 107L



**Model No: DH248**

Thank you for purchasing a Baridi product from the Dellonda range. Manufactured to a high standard, this product will, if used according to these instructions, and properly maintained, give you years of trouble free performance.

## Important Information

Please read these instructions carefully. Note the safe operational requirements, warnings & cautions. Use the product correctly and with care for the purpose for which it is intended. Failure to do so may cause damage and/or personal injury and will invalidate the 12 month warranty. Keep these instructions safe for future use.



Refer to  
instructions



Indoor use  
only



**WARNING!**  
Flammable material

## SAFETY

### 1. ELECTRICAL SAFETY

☐ **WARNING!** It is the user's responsibility to check the following:

- ✓ Check all electrical equipment and appliances to ensure that they are safe before using.
- ✓ Inspect power supply leads, plugs and all electrical connections for wear and damage.
- ✓ Ensure that the insulation on all cables and on the appliance is safe before connecting it to the power supply.
- ✗ **DO NOT** use worn or damaged cables, plugs or connectors.
- ✓ Ensure that any faulty item is repaired or replaced immediately by a Sealey qualified technician.
- ✓ If the cable or plug is damaged during use, switch off the electricity supply and remove from use.
- ✓ Sealey recommend that an RCD (Residual Current Device) is used with all electrical products.
- Important:** Ensure that the voltage rating on the appliance suits the mains power supply.
- ✗ **DO NOT** pull or carry the appliance by the power cable.
- ✗ **DO NOT** pull the plug from the socket by the cable.
- ✗ If the supply cord is damaged, it must be replaced by the manufacturer, its service agent or similarly qualified persons in order to avoid a hazard.

### 2. GENERAL SAFETY

- ✓ Children from age 8 years and above, persons with reduced physical, sensory, or mental capabilities those with lack of experience and knowledge can use the appliance, if they have been given supervision or instruction concerning use of the appliance in a safe way to understand the hazards involved.
- ✗ Children shall **NOT** play with the appliance.
- ✗ Cleaning and user maintenance on the appliance shall **NOT** be made by children without supervision.
- NOTE:** This appliance incorporates an earth connection for functional purposes only.
- ✓ Handle the item with care. Assistance may be required for safe handling and installation.

### 3. REFRIGERATION APPLIANCES

- ✗ **DO NOT** store explosive substances such as aerosol cans with a flammable propellant in this appliance.
- ✓ Children aged from 3 to 8 years are allowed to load and unload refrigerating appliances.
- ✓ This appliance is intended to be used in household and similar applications such as:
  - staff kitchen areas in shops, offices and other working environments;
  - farm houses and by clients in hotels, motels and other residential type environments;
  - bed and breakfast type environments;
  - catering and similar non-retail applications.
- ✗ This refrigerating appliance is **NOT** intended to be used as a built-in appliance.
- ✓ This refrigeration appliance is intended to be used at ambient temperature ranging from 16°C to 38°C.

### 4. FOOD CONTAMINATION

To avoid contamination of food, please respect the following instructions:

- ✗ **DO NOT** leave the door open for long periods. This can cause a significant increase of the temperature in the compartments of the appliance.
- ✓ Clean regularly surfaces that can come in contact with food and accessible drainage systems.
- ✓ Clean water tanks if they have not been used for 48 h; flush the water system connected to a water supply if water has not been drawn for 5 days.
- ✓ Store raw meat and fish in suitable containers in the refrigerator, so that it is not in contact with or drip onto other food.
- NOTE:** two-star frozen-food compartments are suitable for storing pre-frozen food, storing or making ice-cream and making ice cubes. One-, two- and three-star compartments are not suitable for the freezing of fresh food.
- ✓ If the refrigerating appliance is left empty for long periods, switch off, defrost, clean, dry, and leave the door open to prevent mould developing within the appliance.

☐ **WARNING!**

- ✓ Only use the appliance for its designed purpose. Any other use may cause a hazard and/or risk of injury.
- ✓ When positioning the appliance, ensure the supply cord is not trapped or damaged.
- ✗ **DO NOT** locate multiple portable socket-outlets or portable power supplies at the rear of the appliance.
- ✓ Keep ventilation openings in the appliance enclosure or in the built-in structure, clear of obstruction.
- ✗ **DO NOT** use mechanical devices or other means to accelerate the defrosting process other than those recommended by the manufacturer.
- ✗ **DO NOT** damage the refrigerant circuit.
- ✗ **DO NOT** use electrical appliances inside the food storage compartments of the appliance, unless they are of the type recommended by the manufacturer.

# INTRODUCTION

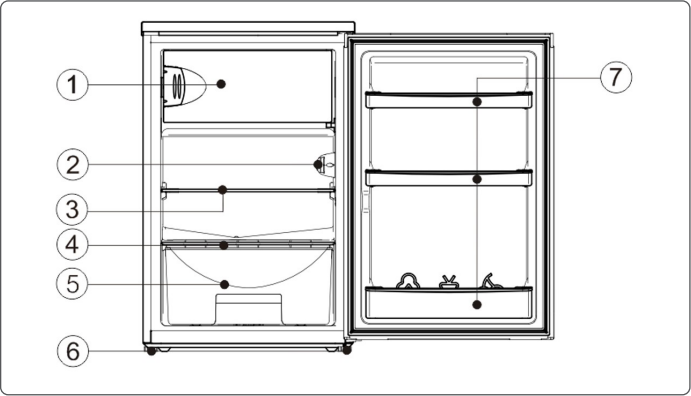
55cm Wide fridge offers a total capacity of 107L (R: 94L, F: 13L) making it perfect for smaller households or as an additional fridge, accommodating a variety of fresh foods or frozen goods. A mechanical thermostat allows the temperature to be set. Comes with a 4-Star Freezer rating for its ability to maintain a temperature of -18°C, making it safer for long term storage of frozen goods. Runs at a maximum 39dB and Energy Efficiency Class E helps keep costs down. Features a reversible door to suit the layout of your kitchen, bar, office or restaurant.

# SPECIFICATION

Model No. .... **DH248**  
Capacity: ..... Gross: 107L (Fridge: 94L, Ice Box: 13L)  
..... Nett: 100L (Fridge: 90L, Ice Box: 10L)  
Climate Class: ..... N / ST  
Colour: ..... White  
Defrost Method: ..... Manual  
Door Style: ..... Reversible  
Energy Rating: ..... E  
Foaming Gas: ..... Cyclopentane  
Frequency: ..... 50Hz  
Nett Weight: ..... 28kg  
Noise Level: ..... 39dB

Number of Shelves: ..... 2  
Operating Sound Level: ..... 39dB  
Plug Type: ..... 3-Pin BS  
Power Cable Length: ..... 1.8m  
Product Dimensions (W x D x H): ..... 549 x 557 x 845mm  
Rated current: ..... 0.6A  
Refrigerant: ..... R600a (28g)  
Temperature Range: ..... Fridge: 0 - 10°C  
..... Freezer: -16 - -24°C  
Type: ..... Undercounter  
Voltage: ..... 220-240V

# PRODUCT OVERVIEW



1	Freezer Door
2	Thermostat
3	Refrigerator Glass Shelf
4	Crisper Cover
5	Crisper
6	Adjustable Feet
7	Bottle Frames

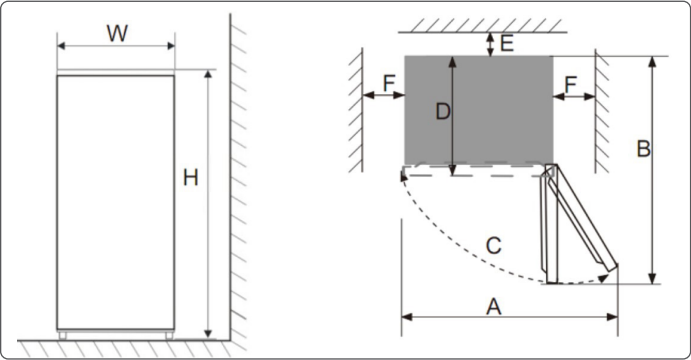
# PREPARATION

## 1. INSTALLATION LOCATION

The position you select for the refrigerator installation should be well-ventilated with limited hot air. **DO NOT** locate the refrigerator near a heat source such as a cooker or boiler. Avoid direct sunlight to allow correct function and save on energy consumption. **DO NOT** locate the refrigerator in a damp environment in order to protect from rust. The quantity of the refrigerant gas of the fridge freezer being divided by the total space of the room in which the fridge freezer is installed should be less than 8g/m³. **NOTE:** The amount of refrigerant charged for the refrigerator can be found on the nameplate.

## 2. HEAT DISSIPATION SPACE

When working, the refrigerator gives off heat to surroundings. Therefore, at least 30mm of free space should be spared at the top side, more than 100mm on both sides, and above 50mm at the back side of the refrigerator.



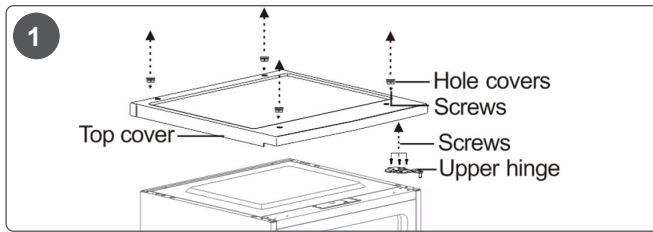
W	549mm
D	557mm
H	845mm
A	915mm
B	1058mm
C(°)	125±5mm
E	50mm
F	100mm

## 3. LEVEL GROUND

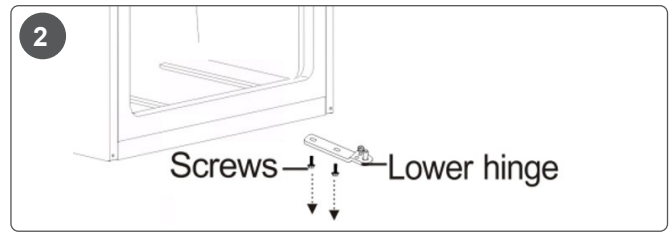
Place the refrigerator on the solid and flat ground (floor) to keep it stable, and reduce vibration and noise. When the refrigerator is placed on such flooring materials as carpet, straw mat, polyvinyl chloride, the solid backing plates should be applied underneath the refrigerator, so as to prevent colour change due to heat dissipation.

**IMPORTANT:** unobstructed ventilation must be maintained around the appliance.

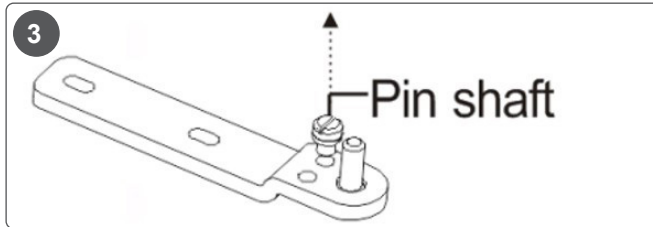
#### 4. REVERSING THE DOOR



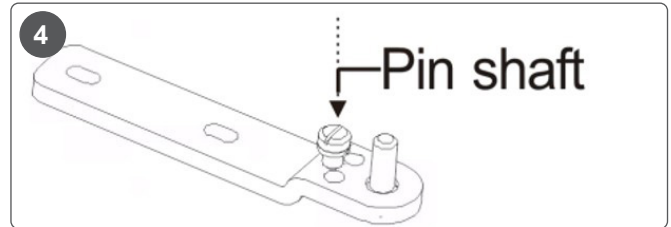
Unplug the appliance. Remove top cover and upper hinge.  
Remove the compartment door from the cabinet.



Remove lower hinge.

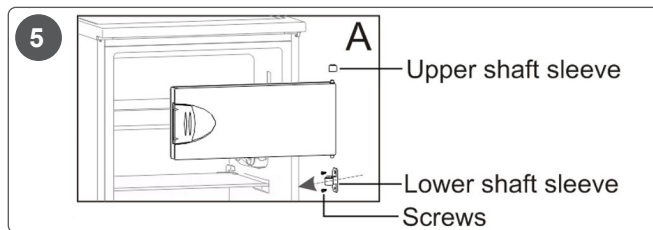


Remove the pin shaft from the right hole of the lower hinge.

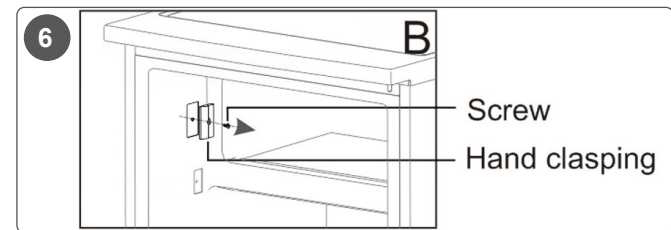


Insert the pin shaft into the left hole and secure. Install the lower hinge on the left side of the cabinet.

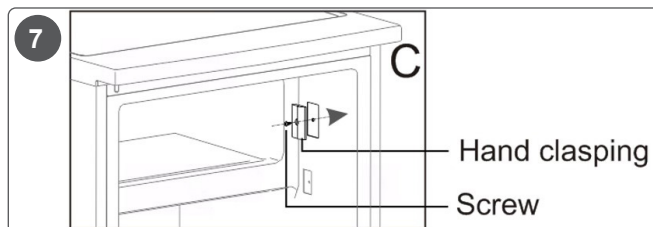
#### 5. DISMANTLING THE SMALL FREEZER DOOR



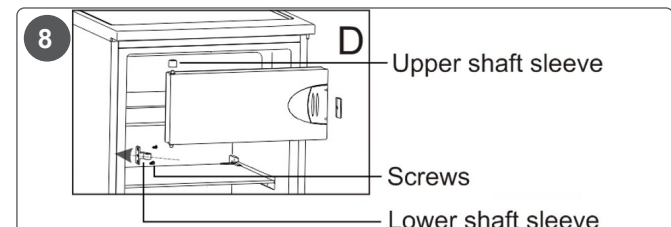
Remove lower and upper shaft sleeves.



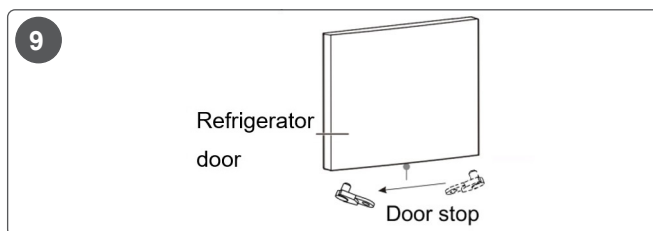
Remove the hand clasp.



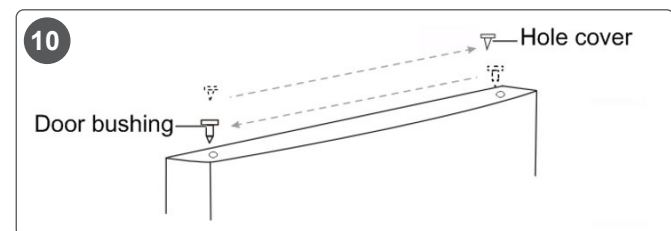
Install the hand clasp on the right side.



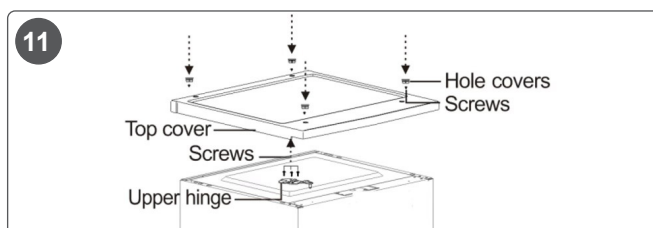
Install the shaft sleeves and the small door on the left side.



Remove the door stop and install to the bottom left side.  
Install the refrigerator compartment door.



Move the door bushing and hole cover to the top left side.



Secure the upper hinge to the top left side of the cabinet with the screws removed previously. Before tightening the upper hinge screws, make sure that the top of the door is level with the cabinet and that the rubber gasket makes a good seal.  
Install the top cover over the cabinet.

## BEFORE USE

### 1. STANDING TIME

After the refrigerator is properly installed and well cleaned, **DO NOT** switch it on immediately. Allow several hours for gases to settle before checking its normal operation.

### 2. CLEANING

Wipe the inside of the appliance with a soft cloth.

### 3. POWER-ON

Insert the plug into the mains supply to start the compressor. After 1 hour, open the refrigerator door. If the temperature inside the refrigerator compartment drops, it indicates the refrigeration system is working normally.

### 4. STORAGE OF FOOD

After the refrigerator runs for a period of time, the internal temperature of the refrigerator will be automatically controlled according to the user's temperature setting. After the refrigerator is fully cooled, put in foods, which usually need 2~3 hours to be fully cooled. In summer, when the temperature is high, it takes more than 4 hours for the foods to be fully cooled. Keep the opening of the door to a minimum to avoid internal temperature rise.

**NOTE:** if the refrigerator is installed in a place with moisture, check the circuit breaker operation. If vibration and noises are produced due to the fridge freezer contacting the wall or if the wall gets blackened by air convection around the compressor, move the appliance away from the wall. Setting up the fridge freezer may cause noise or image disturbance on your mobile phone, fixed-line telephone, radio receiver, television surrounding it, so try to keep the fridge freezer as far away from these items as possible.

## OPERATION

### 1. TEMPERATURE ADJUSTMENT

Temperature can be adjusted by turning the thermostat dial. 1 is the warmest setting and 7 is the coolest.

### 2. TURNING OFF THE APPLIANCE

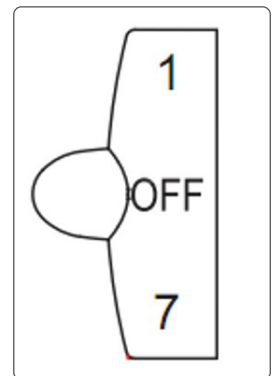
Turning the dial to 'OFF' will turn off the cooling function.

### 3. RECOMMENDED SETTINGS

In normal operating conditions in spring and autumn, it is recommended to set the temperature at 4.

In summer when the ambient temperature is high, it is recommended to set temperature at 3-4.

In winter when the ambient temperature is low, it is recommended to set temperature at 5-6 to avoid frequent start/stop of the refrigerator. Following this guidance may also reduce food wastage.



**IMPORTANT:** temperature requirements may vary due to compressor cycles and outside conditions.

## INSTRUCTIONS FOR FOOD STORAGE

### 1. CLIMATE TYPE

The appliance is designed to operate within a set ambient temperature range. Outside of this range and the appliance may operate inconsistently, with the possibility of defrosting or temperature becoming too warm in the frozen food compartment. The information of climate type of the appliance is provided on the rating plate. This refrigeration appliance is intended to be used at ambient temperature ranging from 16°C to 38°C (N/ST).

CLIMATE CLASS		TEMPERATURE (MIN/MAX)	
SN	Subnormal	10°C	32°C
N	Normal	16°C	32°C
ST	Subtropical	16°C	38°C
T	Tropical	16°C	43°C

### 2. INTERNAL TEMPERATURE

Internal temperature of the appliance may be affected by factors such as location, ambient temperature, and frequency of door opening. The thermostat may need to be adjusted to account for this.

**NOTE:** effervescent/fizzy drinks should not be stored in the freezer compartment or low-temperature compartment.

### 3. FOOD STORAGE LOCATION

FRESH FOOD COMPARTMENT	CRISPER BOX	FREEZER
Storing foods that <b>DO NOT</b> need to be frozen, such as: ✓ Cooked food ✓ Beer ✓ Eggs ✓ Some condiments that need cold preservation ✓ Milk, fruit juice, etc.	✓ Vegetables ✓ Fruits etc.	Storing foods that require freezing: ✓ Ice cream ✓ Frozen food ✓ Foods to be preserved for a long time

#### 4. USE OF THE FRESH FOOD COMPARTMENT

Set the temperature of the fresh food storage compartment between 2°C ~ 8°C. Store the foods that are intended for short-term storage or to be eaten at any time in the fresh food compartment.

**Fridge shelf:** when removing the shelf, lift it up and then pull it out. When installing the shelf, place it into position before putting it down. For the two-section shelf, push the first section to the rear end, and then pull the second section out. Keep the shelf rear flange upward, to prevent foods from contact the liner wall. When removing or refitting the shelf, hold it firmly and handle with care to avoid damage.

**Crisper box:** pull out the crisper box for access to food. After using or cleaning the cover plate of the crisper box, be sure to put it back onto the crisper, so that the internal temperature of the crisper box will not be affected.

#### 5. TIPS ON STORING FROZEN FOOD

- ✓ Check storage guidelines on packaging. Store each item for the period shown against the star rating. This is normally the 'Best Before' date.
- ✓ Check temperature of the frozen food cabinet in the shop where you buy the frozen foods.
- ✓ Ensure the frozen food package is in perfect condition.
- ✓ Always buy frozen products last on your shopping trip or visit to the supermarket.
- ✓ Try to keep frozen food together whilst shopping and on the journey home, as this will help to keep the food cooler.
- ✗ **DO NOT** buy frozen food unless you can freeze it straight away. Use insulated freezer bags to help keep food frozen colder for longer.
- ✓ Use quality food and handle it as little as possible.
- ✓ For some foods, thawing before cooking is unnecessary. Vegetables and pasta can be added directly to boiling water or steam cooked.
- ✓ Frozen sauces and soups can be put into a saucepan and heated gently until thawed.
- ✓ When foods are frozen in small quantities, it will take less time for them to freeze and thaw.
- ✓ When freezing large amounts of fresh food, adjust the temperature control knob to the lowest setting to aid freshness.

#### 6. CAUTIONS FOR FOOD STORAGE

- ✓ Clean and dry foods before storing them inside the refrigerator.
  - ✓ Seal foods to aid freshness and reduce odours.
  - ✗ **DO NOT** overload the shelves with heavy items.
  - ✓ Keep enough space between foods to allow airflow and aid the refrigeration effect.
  - ✗ **DO NOT** place water-rich foods too close to the walls as they may freeze.
  - ✓ Categorized storage of foods. Place foods eaten every day at the front of the shelf to minimise door opening and food spoilage.
  - ✓ Allow hot food to cool down to room temperature before putting it in the refrigerator.
  - ✓ Put frozen foods in the fresh food compartment to thaw. The low temperature of the frozen food will cool the fridge and save energy.
- NOTE:** some types of fresh fruits and vegetables are sensitive to cold and therefore should not be refrigerated.

### MOVING THE APPLIANCE

#### 1. POSITIONING

**DO NOT** place your refrigerator/freezer near a heat source, e.g. cooker, boiler or radiator. Avoid direct sunlight. Ensure the appliance is level by adjusting the front leveling feet. If not, the door may not form a tight seal, affecting performance. Wait for 4 hours before using it, so as to allow the refrigerant to settle. **DO NOT** cover or block the vents or grilles.

#### 2. WHEN NOT IN USE FOR AN EXTENDED PERIOD

Turn off the appliance and unplug the plug from the wall outlet. Take out all foods. Clean and dry the interior thoroughly. To prevent odour and mold growth, leave the door ajar: block it open or have the door removed if necessary. Keep the cleaned appliance in a dry, ventilated place and away from the heat source, place the appliance smoothly, and do not place heavy objects on top of it. The unit should not be accessible to child's play.

### MAINTENANCE & CLEANING

Unplug the appliance before cleaning or performing any maintenance. **DO NOT** handle the plug with wet hands due to the risk of electric shock and injury. **DO NOT** spill water directly onto the appliance. Handle the appliance with caution, particularly metal edges which may be sharp. Maintenance must be performed by an authorised service centre only. General cleaning should be performed at least once a month. Maintenance should be performed if the appliance is damaged, fails or operates abnormally.

#### 1. CLEANING

- ✓ The food residuals in the refrigerator are liable to produce bad odor, so the refrigerator must be cleaned regularly.
- ✓ Clean the fresh food compartment at least once a month.
- ✓ Remove all shelves, crisper box, bottle racks, drawers etc. and clean with a soft damp cloth, warm water and mild detergent.
- ✓ Rinse with clean water and wipe dry.
- ✓ Clear dust accumulated on the rear panel and side plates.
- ✗ **DO NOT** use harsh abrasives, brushes, detergent, soap powder, alkaline detergent, benzene, gasoline, acid, hot water and other corrosive or soluble items to cleanse the cabinet surface, door gasket, plastic decorative parts, etc., so as to avoid damage.
- ✓ Carefully wipe dry the door gasket, clean the groove using a wooden chopstick wrapped with cotton string.
- ✓ After the cleaning, fix the four corners of the door gasket first, and then embed it segment by segment into the door groove.

#### 2. INTERRUPTION OF POWER SUPPLY OR FAILURE OF THE REFRIGERATING SYSTEM

If the power supply is interrupted or the appliance fails for an extended period of time, frozen food should be transferred to another working freezer if possible. Minimise the opening of the door as much as possible to keep the appliance cool.

In the event of a planned power outage, adjust the thermostat knob to the coolest setting. Place ice in watertight containers and place in the upper part of the freezer to further extend the time for fresh food to be stored. Spoiled food should be disposed of. Under normal circumstances, the appliance should run continuously without interruption to maintain freshness of food and reduce wear on the appliance.

### 3. CHANGING THE LAMP

The LED lamp is used by the refrigerator for lighting, which features low energy consumption and long service life. In case of any abnormality, please contact an authorised service centre for repair/replacement.

### 4. SAFETY-CHECK AFTER MAINTENANCE

After cleaning/maintenance, check the appliance for any damage or abnormality. If the appliance is damaged, **DO NOT** use. Disconnect from mains power supply and contact an authorised service centre for repair.

### 5. HOW TO DISASSEMBLE PARTS

**Shelf:** Hold one end of the shelf, and lift it up while pulling it outward.

**Flip cover:** keep the flip cover vertical, align it with the rotating shaft opening on the right side, and pull it outward to remove it; **DO NOT** close the door when the flip cover is opened, to avoid damaging the refrigerator door.

## TROUBLESHOOTING

**NOTE:** if the below troubleshooting does not solve the applicable fault, **DO NOT** attempt to disassemble or repair the appliance yourself. Inexperienced persons may cause injury or serious malfunctioning. Contact an authorised service centre only. This product should be serviced by an authorised engineer and only genuine spare parts should be used.

FAULT	POSSIBLE CAUSE	POSSIBLE SOLUTION
Appliance fails to operate.	Lack of power supply.	Turn on power supply.
	Blown fuse.	Replace fuse with equivalent.
	Ambient temperature is less than 10°C	Relocate appliance to allow correct function.
Abnormal noise / vibration.	Appliance not level.	Adjust feet accordingly.
	Appliance is touching a wall / object.	Move the appliance so there is suitable spacing.
Poor refrigerating efficiency.	Appliance is overloaded.	Remove items from the appliance.
	Hot items.	<b>DO NOT</b> place hot items in the appliance. Allow them to cool to room temperature.
	Door is frequently open.	Minimise opening of the door.
	Damaged seal.	Replace seal. Ensure door is closed.
	Direct sunlight and/or poor ventilation.	Install/locate as per installation instructions.
	Temperature setting too high.	Adjust temperature using thermostat dial.
Peculiar smell.	Spoiled food.	Throw away spoiled food. Clean appliance.
	Storing strong odoured foods.	Ensure food is sealed before storing.

## DISPOSAL

Old appliances still have some surplus value. An environmentally friendly approach will ensure that valuable raw materials are recycled. The refrigerants used in your equipment and insulation materials require special handling procedures. Make sure there is no pipe damage on the back of the equipment before handling. Up-to-date information on the options for disposing of old equipment and packaging from old equipment can be obtained from the local authority.

### WARNINGS FOR DISPOSAL

Refrigerant and cyclopentane foaming material used for the refrigerator are flammable. Therefore, when the refrigerator is scrapped, it shall be kept away from any fire source and be recovered by a special recovering company with corresponding qualification so as to prevent damage to the environment or any other harm. When the refrigerator is scrapped, disassemble the doors, and remove gasket of door and shelves; put the doors and shelves in a proper place, so as to prevent trapping of any child.



#### WEEE REGULATIONS

Dispose of this product at the end of its working life in compliance with the EU Directive on Waste Electrical and Electronic Equipment (WEEE). When the product is no longer required, it must be disposed of in an environmentally protective way. Contact your local solid waste authority for recycling information.



## Product Information Sheet. Refrigerating Appliances

SUPPLIER_NAME_OR_TRADEMARK	Dellonda EU Ltd.	DELEGATED_ACT	EU/2019/2016
MODEL_IDENTIFIER	DH248		

Baridi 55cm Freestanding Undercounter Fridge with Ice Box, 107L - White

ADDRESS	Farney Street, Carrickmacross, Co. Monaghan, A81 PK68 Ireland
PHONE_NUMBER	01284 757 500
EMAIL_ADDRESS	TechnicalCompliance@dellonda.co.uk

Parameter	Verification tolerances
-----------	-------------------------

Low-noise appliance	No	Design type	Freestanding
Wine storage appliance	No	Other refrigerating appliance	No

### General product parameters

Height mm	845	Total volume. Litres.	107
Width mm	549		
Depth mm	557		
EEI	100	Energy efficiency class	E
Airborne acoustical noise emissions (dB(a) re 1 pW	39	Airborne acoustical noise emission class	
Annual energy consumption kWh/a	137	Climate class	SN/N

SN = extended temperate(10-32°C)

N = temperate 16-32°C

ST = subtropical 16-38°C

T = tropical 16-43°C]

Minimum ambient temperature (°C) for which the refrigerating appliance is suitable.	16	Maximum ambient temperature (°C) for which the refrigerating appliance is suitable.	38
Winter setting	No		



Compartment type

Volume.  
Litres.

Recommended temperature setting for optimised food storage

(kg/24 h)

(auto = A Manual = D)

Freezing capacity

Defrosting type

Pantry					
Wine storage appliance	No				
Beverage / Beer cooler					
Cellar					
Fresh food					
Chill					
0-star or ice-making					
1-star					
2-star					
3-star					
4-star					
2-star section					
Variable temperature compartment	Compartment types				

**4-star compartments**

**Light source parameters**

Fast freeze facility	No	Type of light source	LED
		Energy efficiency class	exempt
		Minimum duration of guarantee (years)	1
Suppliers website	<a href="https://www.dellonda.co.uk/">https://www.dellonda.co.uk/</a>		