

# baridi

---

## 1500W Stand Mixer with Accessories 6L - Black



### Model No. DH173

Thank you for purchasing a Dellonda product. Manufactured to a high standard, this product will, if used according to these instructions, and properly maintained, give you years of trouble free performance.

## Important Information

Please read these instructions carefully. Note the safe operational requirements, warnings & cautions. Use the product correctly and with care for the purpose for which it is intended. Failure to do so may cause damage and/or personal injury and will invalidate the warranty. Keep these instructions safe for future use.



Refer to  
instruction  
manual

## SPECIFICATION

Capacity: 6L

Electrical Class: II

Weight: 4.95kg

No Load Speed: 4300 - 15000rpm

Speeds: 6 + Pulse Function

Dimensions (W x D x H): 373 x 234 x 334mm

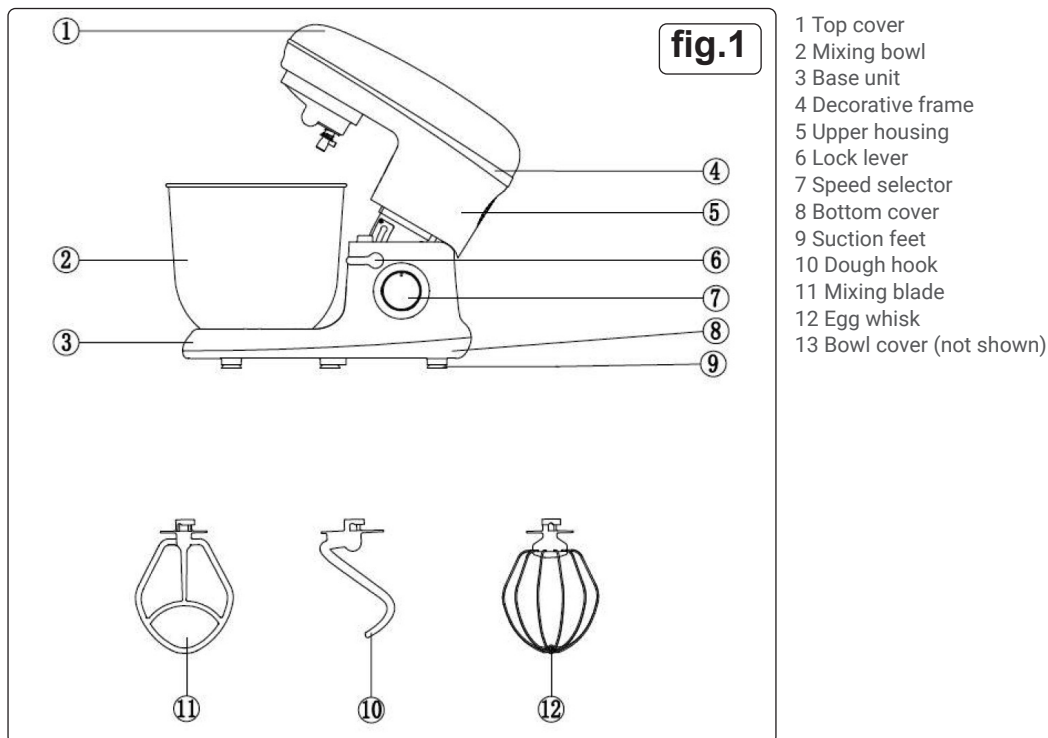
Supply: 230V-50Hz

## SAFETY INSTRUCTIONS

- Please read through the information and safety advice contained in these operating instructions carefully and thoroughly before you use the mixer for the first time.
- **ELECTRICAL SAFETY**
- **WARNING!** It is the user's responsibility to check the following:
  - Check all electrical equipment and appliances to ensure that they are safe before using. Inspect power supply leads, plugs and all electrical connections for wear and damage. Dellonda recommend that an RCD (Residual Current Device) is used with all electrical products. You may obtain an RCD by contacting your local domestic stockist. If the product is used in the course of business duties, it must be maintained in a safe condition and routinely PAT (Portable Appliance Test) tested.
  - **Electrical safety information:** It is important that the following information is read and understood.
  - Ensure that the insulation on all cables and on the appliance is safe before connecting it to the power supply.
  - Regularly inspect power supply cables and plugs for wear or damage and check all connections to ensure that they are secure.
  - **Important:** Ensure that the voltage rating on the appliance suits the power supply to be used and that the circuit is fitted with the correct fusing.
  - **DO NOT** pull or carry the appliance by the power cable.
  - **DO NOT** pull the plug from the socket by the cable.
  - **DO NOT** use worn or damaged cables, plugs or connectors. If the supply cord is damaged, it must be replaced by the manufacturer or its service agent or a similarly qualified person in order to avoid a hazard.
  - Ensure that any faulty item is repaired or replaced immediately. Dellonda recommend repairs are carried out by a qualified electrician.
- **GENERAL SAFETY**
- Care shall be taken when handling the sharp cutting blades, emptying the bowl and during cleaning.
- **DO NOT** use the device when the head is lifted up.
- To avoid electric shocks, do not use this device in the vicinity of water. **DO NOT** immerse the mains lead in water or other liquid.
- **DO NOT** kink or clamp the mains lead. To avoid any risk of stumbling, **DO NOT** allow the mains lead to hang over the edge of a table or a counter.
- Make sure that the voltage shown on the rating plate corresponds with that of the mains supply. The rating plate can be found on the bottom of the motor block. The stand mixer is only to be connected to an AC supply (~).
- The motor must always be switched off before the stand mixer is connected to the mains supply. Speed selector at "0" setting, fig.1.
- **DO NOT** use outdoors. Only suitable for using indoors.
- This device should not be set up in close proximity to a naked flame, inflammable materials (curtains, textiles, etc.), a radiator, an oven or some other heat source.
- Before use, place the device on a horizontal and flat surface.
- Place this device as close as possible to the power source so that you can disconnect the plug quickly and easily.
- **DO NOT** attempt to repair the device yourself, since you will be exposed to hazardous live components or other hazards by opening and removing the covers.
- Repairs should only be carried out in a qualified repair centre.
- The device should only be used for its intended purpose.
- During use, do not touch moving parts with your fingers.
- Please note that when passing the device on to a third party, the operating instructions must be included.
- No liability is accepted for damage due to improper use or the failure to observe our operating instructions / safety notes.
- **WARNING!** Unplug the appliance when not in use or before cleaning.
- The removal of the plug has to be such that an operator can check from any of the points to which he has access that the plug remains removed.
- Always disconnect the appliance from the supply if it is left unattended and before assembling, disassembling or cleaning.
- Switch off the appliance and disconnect from supply before changing accessories or going near parts that move in use.
- This appliance is intended to be used in household and similar applications such as:
  - - Staff kitchen areas in shops, offices and other working environments;
  - - Farm houses;
  - - By clients in hotels, motels and other residential type environments;
  - - Bed and breakfast type environments.
- Appliance can be used by persons with reduced physical, sensory or mental capabilities or lack of experience and knowledge if they have been given supervision or instruction concerning use of the appliance in a safe way and if they understand the hazards involved. Children shall not play with the appliance.

- This appliance shall not be used by children. Keep the appliance and its cord out of reach of children.

## FEATURES

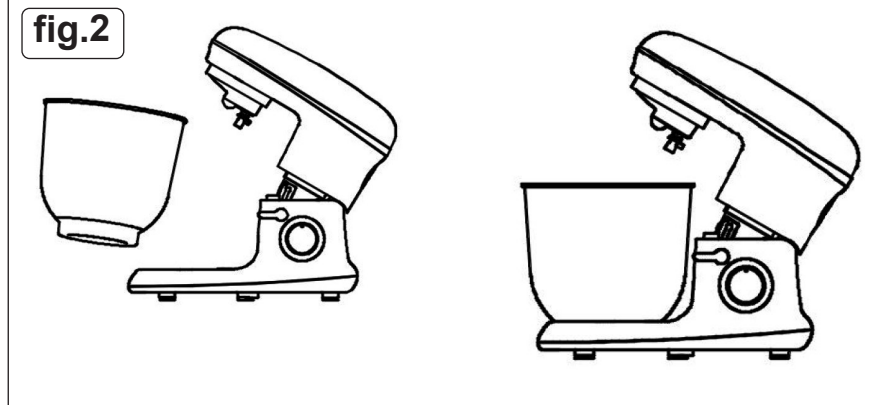


## BEFORE FIRST USE

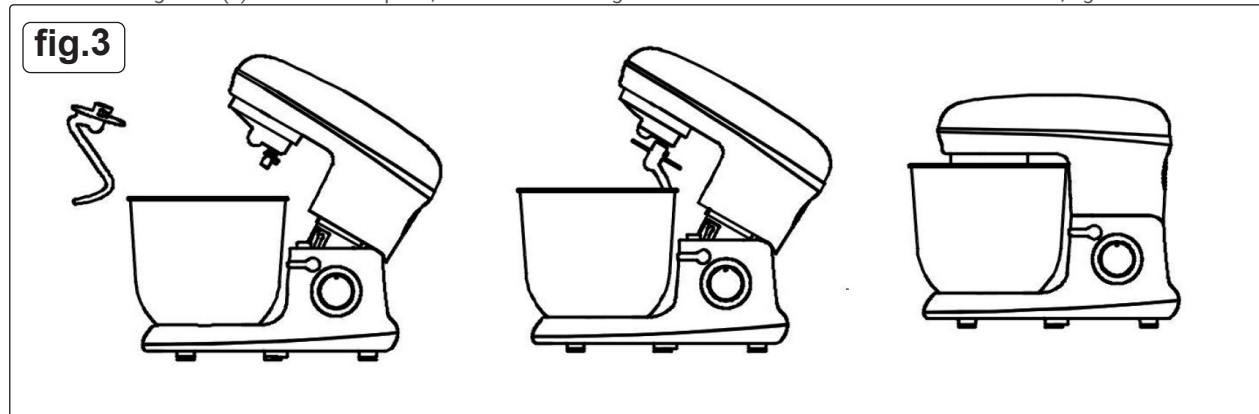
- All parts of the stand mixer are to be thoroughly cleaned before being used for the first time. (See: Cleaning section below ).

## PREPARATION FOR USE

- Mix the food ingredients thoroughly in accordance with the recipe.
- Then open the upper housing fig.1(5) using lock lever fig.1(6).



- Place the mixing bowl (2) on the device plate, and turn the mixing bowl unit in clockwise direction until it is fixed, fig.2.



- Fix the dough blade (10) or the egg whisk (12) or the mixing blade (11) on the blade connector as required, and rotate the blade connector anticlockwise until attachment engages firmly, fig.3.
- Turn the lock lever (6) anticlockwise (in the direction of the marked arrow) and press the top cover (1) downwards with one hand, fig.3, to lower.

- Connect to mains supply.
- Select desired speed setting, P for pulse or speeds 1-6 with speed selector (7). Begin on a slow speed, then increase to the desired speed.
- To turn off turn speed selector (7) to 0.

## APPLICATIONS

### • MIXING OR KNEADING DOUGH:

- Fit dough hook
- Suggested flour and water at a ratio of 5:3, and the maximum quantity of flour is 1.2kg.
- Speed 1 for mix 30 seconds, speed 2 for mix 30 seconds, then speed 3 for about 3 minutes.
- When using the mixing bowl, do not put ingredients over its maximum capacity 6L.
- Maximum capacity of mixture is 1.6 kg.

### • WHISKING EGG WHITES OR CREAM:

- The egg whisk should be used.
- Switch on speed 4 to speed 6, whip the egg whites without stopping for about 4 minutes, according to the size of the eggs, until stiff.
- For whipping cream, whip 250ml fresh cream at speed 4 to 6 for about 5 minutes.
- When filling the mixing bowl with fresh milk, cream or other ingredients, please ensure that the maximum quantity is not exceeded.

### • MIXING SHAKES, COCKTAILS OR OTHER LIQUIDS:

- Mixing beater should be used.
- Mix the ingredients according to the available recipe, from speed 1 to 6 for about 4 minutes.
- Do not exceed the maximum quantity for the mixing bowl.

## RECOMMENDATIONS FOR SPEED LEVELS

Speed	Attachment	Description
1-3	All	Starting position for all mixing operations When adding ingredients
	Dough hook	Kneading and mixing firm dough or ingredients E.g. Dough: Ingredients: 1.2 kg plain flour, 0.72 kg lukewarm water Preparation 1. Put the ingredients in the mixing bowl. 2. Fit the top cover and dough hook. 3. Speed: 1st, knead for 30s on level 1. 2nd, knead for 30s on level 2. 3rd, knead for 3 minutes on level 3.
4-6 Pulse button	Egg whisk	Whipping cream, egg whites, mayonnaise, beating butter until fluffy E.g: Meringue Ingredients: 12 egg whites Preparation: 1. Put the egg whites in the mixing bowl. 2. Fit the splash guard and the balloon whisk. 3. Beat the egg whites at level 6 for 4 minutes until stiff

## CLEANING

- **WARNING!** Before cleaning, please ensure that the Switch knob is at the “0” position and that the plug has been disconnected from the mains supply.
- After use, allow the device to cool down before you start to clean it.
- To clean the exterior of the device, use a moist cloth and a mild detergent. When cleaning the interior and exterior do not use any abrasive detergents or alcohol.
- **Cleaning the base unit**
  - 1. Clean the base unit with a damp cloth. A little detergent may also be used.
  - 2. Wipe over with clean water.
  - 3. Do not use the base unit again until it is completely dry
- **Cleaning the splash guard, dough hook, balloon whisk and beater**
- **CAUTION!** The splash guard is not dishwasher safe.
- **The dough hook, balloon whisk and beater can NOT be washed in the dishwasher.**
  - 1. Put the parts in cold or lukewarm water to soften dough residues. **NOTE:** You can also add a little detergent to the water.
  - 2. Remove softened dough residues with a washing-up brush.
  - 3. Rinse off with clean water.
  - 4. Allow parts to dry completely before using them again.
- **Cleaning the mixing bowl**
  - The mixing bowl is made of stainless steel and can be cleaned in the sink or dishwasher.

## END OF LIFE

- At the end of its service life, this product may not be disposed of in the normal household waste, but rather must be disposed of at a collection point for recycling electrical and electronic devices. The materials are recyclable according to their label. You make an important contribution to protecting our environment by reusing, recycling or utilizing old devices in other ways.

#### **Environment Protection and Waste Protection and Electrical Equipment Regulations (WEEE)**

Recycle unwanted packaging materials. When this product is no longer required, or has reached the end of its useful life, please dispose of it in an environmentally friendly way. Drain any fluids (if applicable) into approved containers, in accordance with local waste regulations. Under the Waste Batteries and Accumulators Regulations 2009, Dellonda would like to inform the user that this product contains one or more batteries. It is our policy to continually improve products and we reserve the right to alter data, specifications and parts without prior notice. No liability is accepted for incorrect use of this product. Guarantee is 12 months from purchase date, proof of which is required for any claim.

### **Dellonda Limited**

Kempson Way, Suffolk Business Park, Bury St Edmunds, Suffolk. IP32 7AR



01284 757575



support@dellonda.co.uk



www.dellonda.co.uk