



Single Motor Ultra-Quiet Adjustable-Height Desk Frame 80kg Capacity - Black



Model No. DH17.V2

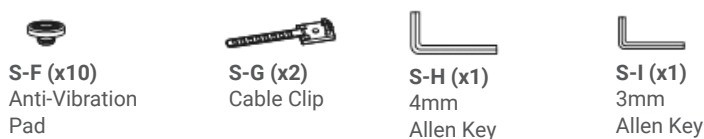
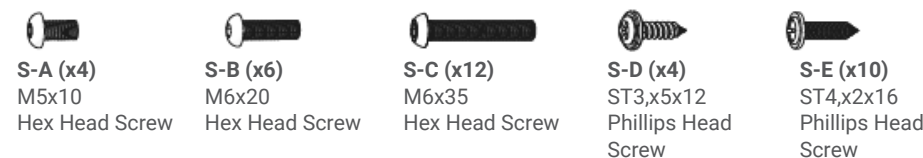
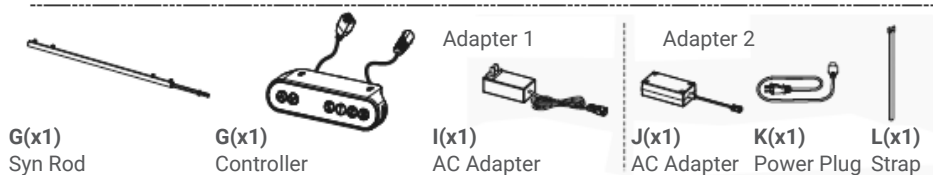
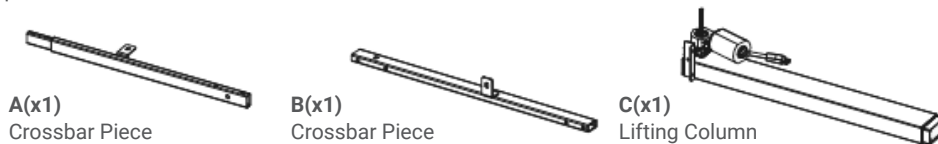
Thank you for purchasing a Dellonda product. Manufactured to a high standard, this product will, if used according to these instructions, and properly maintained, give you years of trouble free performance.

Important Information

Please read these instructions carefully and note any safe operational requirements, warnings & cautions. Use the product correctly and with care for the purpose for which it is intended. Failure to do so may cause damage and/or personal injury and will invalidate the warranty. Keep these instructions safe for future use.

Contents

Please check all components shown in the component checklist. If any components are missing or damaged. Contact your point of purchase for replacement.



Before installation, it's crucial to consider key specifications


Power Input
(100-240V)


Operational Temperature
(100-240V)


Weight Capacity
80kg (176LBS)

Essential tools for assembling the desk frame.



Specification

- Height range: 710-1160mm
- Max. load capacity: 80kg
- Noise Level: <50dB
- Plug Type: 3-Pin **BS**
- Product depth (front to back): 57.5cm
- Product Height (Floor to Top): 116cm
- Product Width (Side to Side): 72cm
- Recommended Desktop Dimensions (W x D): Min Desktop (W x D): 1000 x 500mm. Max Desktop (W x D): 1600 x 800mm
- Speed: 25mm/s
- Supply: 230V

About the Product

Height-adjustable desk frame creates the possibility of a sitting or standing working environment. Single motor system ensures a fast and stable adjustment. Features ultra-quiet operation with sound level less than 50dB. Range of four desktop designs available; Model No's. DH19, DH20, DH21, DH22. Some simple assembly is required.

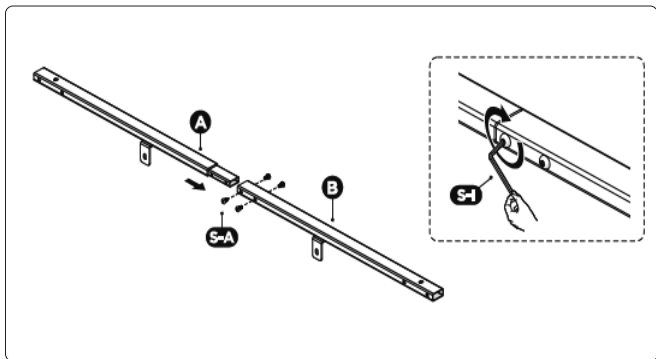
Electrical Safety

- **WARNING!** It is the user's responsibility to check the following:
- Check all electrical equipment and appliances to ensure that they are safe before using.
- Inspect power supply leads, plugs and all electrical connections for wear and damage.
- Ensure that the insulation on all cables and on the appliance is safe before connecting it to the power supply.
- **DO NOT** use worn or damaged cables, plugs or connectors.
- Ensure that any faulty item is repaired or replaced immediately by a Sealey qualified technician.
- If the cable or plug is damaged during use, switch off the electricity supply and remove from use.
- Sealey recommend that an **RCD** (Residual Current Device) is used with all electrical products.
- **Important:** Ensure that the voltage rating on the appliance suits the power supply to be used and that the plug is fitted with the correct fuse.
- **DO NOT** pull or carry the appliance by the power cable.
- **DO NOT** pull the plug from the socket by the cable.
- Dellonda recommend that repairs are carried out by a qualified electrician.
- ALWAYS make sure there are no hazards in the operating environment. e.g., nothing that will get hooked up on the desk, or stop the desk from raising or lowering fully.
- Unplug the power source before cleaning. Wipe the dust on surface with slight damp cloth when cleaning, **DO NOT** get water in the electrical housing, and be careful not to loosen any cables.
- The electrical housing contains electronic components, metals, plastics, wires etc., dispose of in accordance with environmental legislation, not the general household waste.
- Check carefully to ensure correct and complete assembly before use.
- Familiarise yourself with all functions and program settings of the product before first use.
- **DO NOT** let Children play on the product.
- Cleaning and user maintenance on the appliance shall not be made by children without supervision.
- Slight noise caused by the V-ribbed belt or brake system due to structure will not have any effect on the use of the equipment.
- **DO NOT** clean the unit with corrosive or abrasive materials.
- This appliance can be used by children aged from 8 years and above and persons with reduced physical, sensory or mental capabilities or lack of experience and knowledge if they have been given supervision or instruction concerning use of the appliance in a safe way and understand the hazards involved. Children shall not play with the appliance.
- If the supply cord is damaged, it must be replaced by the manufacturer, its service agent or a similarly qualified person in order to avoid a hazard and prolong the life of the equipment.
- Keep the original instructions, for future reference.
- **ALWAYS** inspect the unit prior to use for fatigue and damage. Professional repair only.

Assembly

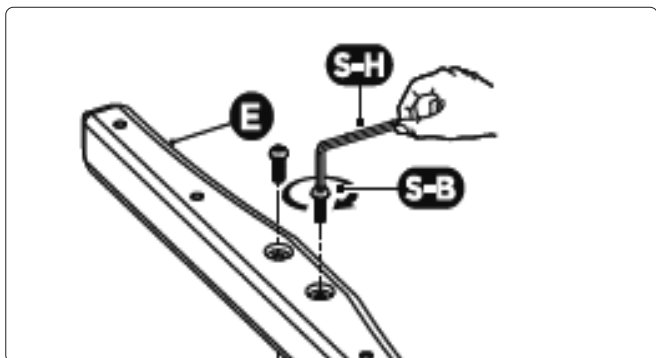
1.Attaching the crossbar

- Assemble the crossbar pieces A and B using four M5x10 Hex Head screws S-A and a 3mm Allen Key S-I.



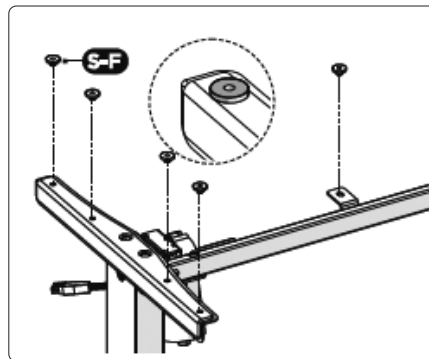
2.Attaching the Side brackets

- Attach each Side Brackets E to the Lifting Column using the two M6x20 Screws S-B.
- Repeat the same process to attach the other side bracket.



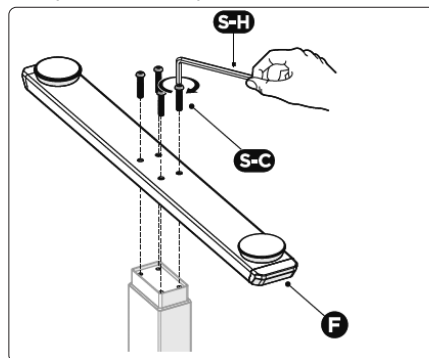
3.Attaching the Anti-Vibration Pads

- Attach the Anti-Vibration Pads S-F to the surface of the crossbar on the ten positions as shown.



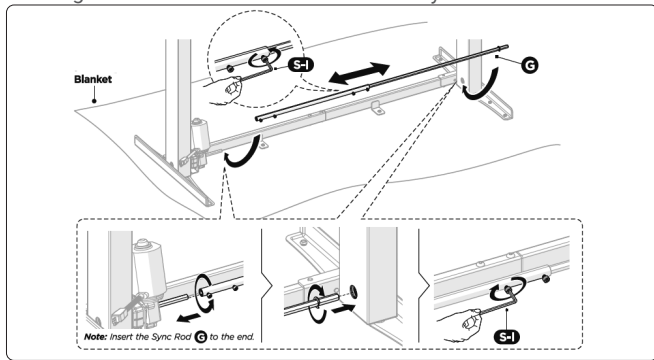
4.Attaching the Feet

- Attach the Lifting Column C/D upside down on the floor.
- Attaching the Foot F to the Lifting Column using the four M6x35 Screws.
- Repeat the same process to attach the other foot.



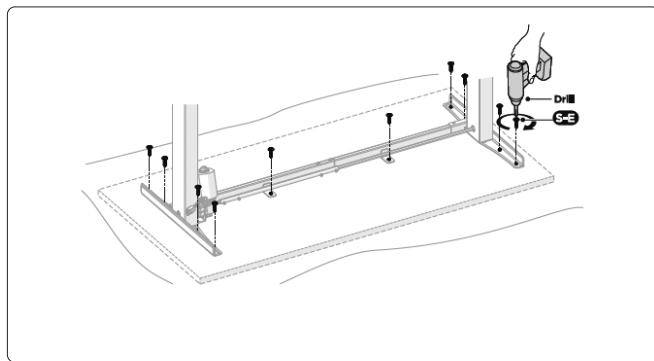
5. Attaching the Sync Rod

- Loosen the four screws on the Sync Rod G and insert both sides of the Sync Rod into the holes found on the desk frame as shown in the illustration.
- Re tighten the four screws of assembled Sync Rod.



6. Drilling the Desktop

- Attaching the assembled desk to the desktop trough the mounting holes found on the side bracket and Crossbar as shown in the illustration using ten ST4.2x16 screws S-E



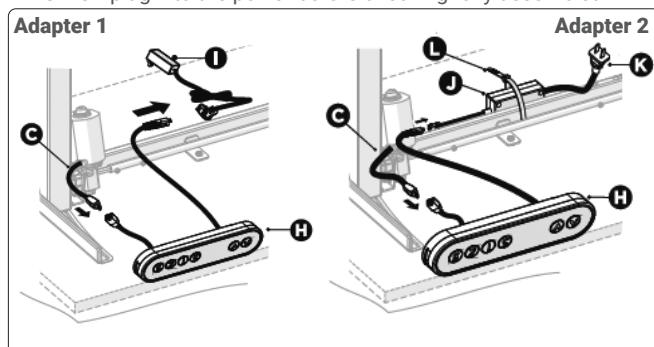
7. Connecting the Controller and the Power Plug

Adapter 1

- Connect the controller H with the AC adapter I.
- Insert the lifting Column C into the Controller H.
- DO NOT** plug into the power before checking fully assembled.

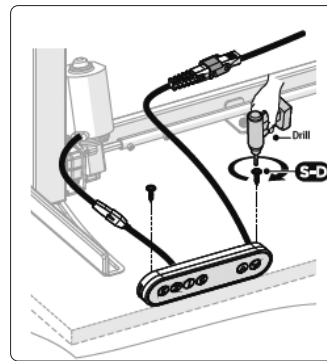
Adapter 2

- Connect the controller H with the AC Adapter J.
- Insert the Power Plug K into the AC Adapter J and secure the AC Adapter J with a strap L as shown.
- Insert the cable from Lifting column C into the Controller H.
- DO NOT** plug into the power before checking fully assembled.



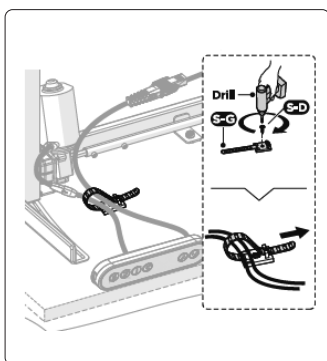
8. Attaching the Controller

- Attach the Controller H to the desktop using two ST3.5X12 Screws S-D.



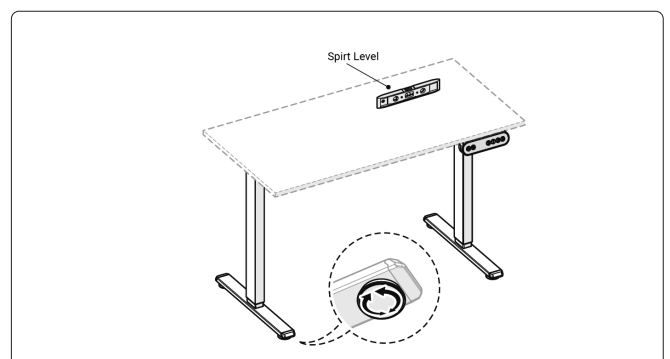
9. Cable Management

- Run the cables through the cable clips S-G and attach the Cable Clips to the desktop with two ST.5x12 Screws S-D to ensure clean and neat surface.

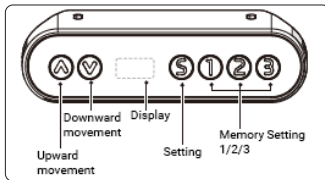


10. Adjusting the desk

- Turn over the desk with the help of another person.
- There are two adjustable foot pads under each foot. If the floor isn't even, simply turn the pad to adjust the level to make the desk stable.
- TIP:** Use the spirit level (not included) to check if the desktop is even.
- Connect the desk to power. Keep holding the press on controller to adjust the desk to the required height.
- NOTE:** At least two people are required when turning over the desk, otherwise serious bodily injuries might occur.



Control Panel For Electric Height Adjustable desk



- Operational Instructions
- 1. System Resetting
- When an error occurs an error will display "Rst" keep pressing the "V" button for five seconds after the motor stops running. You will hear a beep sound when the process is complete. The system may fail if you release the "V" button before the beep.
- 2. "A" Upward Movement and "V" Downward Movement
- Press the "A" or "V" and do not release until the desk reaches its desired height.
- 3.Memory Setting
- To store a certain height, first press "S" and it will display "S-". Press "1","2" or "3" to store the current height in the setting. Once it is completed, you can have the desk move to the corresponding height by pressing "1", "2" or "3". Pressing any button will stop the automatic adjustment.
- 4. Maximum Height Limit Setting
- To save the maximum height limit, keep pressing "S" and the "V" for five seconds till you hear a beep sound, maximum height limit is saved.
- To change the maximum height limit, adjust the desk to move to the current maximum height first, keep pressing the "S" and the "A" for five seconds till you hear a beep sound, maximum height limits deleted.
- 5. Minimum Height Limit Setting
- To save the current height as the minimum height limit, Keep pressing "S" and "V" for five seconds till you hear a beep sound, minimum height limit is saved.
- To change the minimum height limit, adjust the desk to move to the current minimum height first, keep pressing the "S" and the "V" for five seconds till you hear a beep sound, the maximum height limit deleted.
- 6.Lock and Unlock Functions
- To lock the controller, keep pressing "A" and "V" for five seconds till the controller displays "Loc" and a beep sound.
- To unlock the controller, keep pressing "A" and "V" for five seconds till the controller displays its current height and you hear a beep sound.
- 7. Factory Settings
- When the controller requires resetting to the factory settings keep pressing the "S" "2" and "3" for five seconds till you hear a beep sound.
- 8.Timer Settings
- Press the "1" and "3" buttons, and controller will display "x,xh", then the "A" or "V" to set the timer (each press leads to a 0.5 hour increment). The system will exit automatically in two seconds after the timer is saved.
- The indicator light will be flashing on the display during the timer mode, The unit emits 5 beeps when the time is set up.
- 9. Parameter Settings
- Keep pressing "S" for five seconds to enter the parameter setting page. This display shows "S-x" ("X" stands for parameter). Press "A" or "V" to change the setting, Press "S" again to exit after completing setting.
- Parameters:
- S-1 Height Distance: 0-CM, 1INCH
- S-2 No Gyro- Current Collision Avoidance System,the default setting is 0.
- S-3 Anti-Collision Sensitivity (Upward Movement). the sensitivity setting: 0-8 - off, 8-the highest.
- S-4 Anti-Collision Sensitivity (Downward Movement). the sensitivity setting: 0-8 - off, 8-the highest.
- S-5 Installation Distance: cm.
- S-6 0-keep pressing to operate the desk moving to the stand height, 1- press to operate the desk moving to the stored height.
- S-7 0- HOT protection is off, 1-HOT protection is on.

Troubleshooting guide

- | Error No | Solution |
|------------|---|
| E1 | The main power supply voltage is too high. Check the main power. |
| E2 | The columns don't go together. Reset the system. |
| E3 | The control panel is disconnected. Check the connection. |
| E4 | The control panel connection error has occurred. Check the connection. |
| E5 | Collision avoidance system has activated. Remove all the objects within the range of motion. |
| E6 | Electrical problem has occurred. Check the connection, change the mains power fuse if required. |
| E7 | Electrical problem has occurred. Disconnect from mains and reconnect. |
| HOT | System overheating. Stop operating and allow the desk to remain idle for 30min. |
| E11 | Motor is disconnected. Check the connection. |
| E12 | Electrical problem has occurred. Change the control panel. |
| E13 | Electrical problem has occurred. Check the motor cords connection. |
| E14 | Motor hall error. Check hall signal. Change the cords if needed. |
| E15 | Motor short circuit error. Change the motor. |
| E16 | Electrical problem has occurred. Reset the system. |
| E17 | Electrical problem has occurred. Change the motor/Hall cords. |
| E18 | Motor overload. Reduce the load. |
| E42 | Memory sensor error. Change the control panel. |
| E43 | Collision avoidance system error, Change the control panel. |



Environment Protection, Waste Electrical and Waste Electronic Equipment Regulations (WEEE)



Recycle unwanted packaging materials. When this product is no longer required, or has reached the end of its useful life, please dispose of in an environmentally friendly way. Drain any fluids (if applicable) into approved containers, in accordance with local waste regulations. It is our policy to continually improve products and we reserve the right to alter data, specifications and parts without prior notice. No liability is accepted for incorrect use of this product. Guarantee is 12 months from purchase date, proof of which is required for any claim.

Jack Sealey Ltd t/a Dellonda, Kempson Way, Suffolk Business Park, Bury St Edmunds, Suffolk, IP32 7AR UK

Jack Sealey (EU) Ltd t/a Dellonda, Farney Street, Carrickmacross, Co. Monaghan, A81 PK68 Ireland

Tel: 01284 757575 • **Email:** support@dellonda.co.uk • **Web:** www.dellonda.co.uk