



MINI DIGITAL BIKE PUMP

MODEL NO: **CTI100**

Thank you for purchasing a Sealey product. Manufactured to a high standard, this product will, if used according to these instructions, and properly maintained, give you years of trouble free performance.



IMPORTANT: PLEASE READ THESE INSTRUCTIONS CAREFULLY. NOTE THE SAFE OPERATIONAL REQUIREMENTS, WARNINGS & CAUTIONS. USE THE PRODUCT CORRECTLY AND WITH CARE FOR THE PURPOSE FOR WHICH IT IS INTENDED. FAILURE TO DO SO MAY CAUSE DAMAGE AND/OR PERSONAL INJURY AND WILL INVALIDATE THE WARRANTY. KEEP THESE INSTRUCTIONS SAFE FOR FUTURE USE.

1. SAFETY

- ✓ Read the manual before using this product. Thoroughly understand operating procedures, safety warnings and maintenance requirements. Keep the manual in a convenient place for all users to see and use. Keep labels as per original.
- ✓ After six minutes of continuous operation, allow the unit to cool before restarting.
- ✓ Damage can occur from continued overuse.
- ✓ The pump may become HOT after using for a long period of time.
- ✓ Allow the pump to cool down sufficiently before storing.
- ✓ Only inflate tyres to the manufacturer's recommended pressure. **DO NOT** over inflate as serious injury could occur.
- ✓ Keep the pump away from small children.
- ✓ Children from age 8 years and above, persons with reduced physical, sensory, or mental capabilities those with lack of experience and knowledge can use the appliance, if they have been given supervision or instruction concerning use of the appliance in a safe way to understand the hazards involved.
- ✓ Children shall NOT play with the appliance
- ✓ Clean with a damp cloth only. **DO NOT** use chemicals or soap.
- * **DO NOT** use (or modify) the tool for any other purpose than that for which it was designed.
- ✓ The warnings, precautions, and instructions discussed in this instruction manual cannot cover all possible conditions and situations that may occur. It must be understood by the operator that common sense and caution are applied when using this product. Failure to heed these warnings may result in fatal personal injury and/or property damage.
- ✓ If using the pump in temperatures below 0°C precaution must be taken to prevent snow and ice interfering with the operation, this may cause the pressure relief device and intake filters to be blocked.
- ✓ Cleaning and user maintenance on the appliance shall not be made by children without supervision.

2. INTRODUCTION

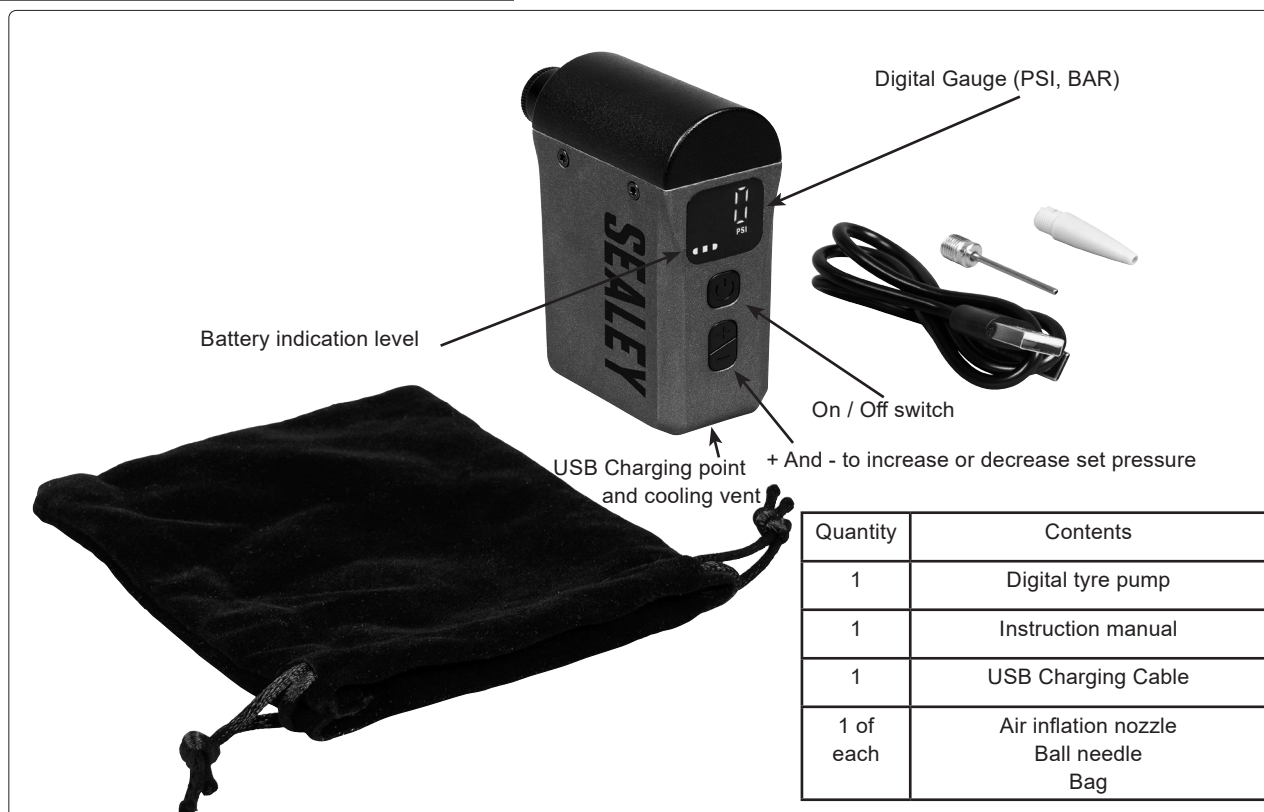
Compact, pocket-size pump for ultimate portability. Digital gauge with LCD screen for clear and accurate readings. Fast inflation reaches 0-30psi in 151 seconds. Pressure Range: 0-120psi(0-8bar). Can inflate two tyres on a single charge. 15L/Min airflow rate. Reads in bar and psi, with preset pressure settings with auto-cut-off for quick and easy inflation. Compatible for both Presta and Schrader valves. Rechargeable unit reaching full charge in 30mins (supplied with USB-C charging cable). Supplied with storage bag, ball spike and inflatables adaptor.

3. SPECIFICATION

Model no:	CTI100
Accuracy:	2.2%
Airflow:	15L/Min
Battery:	500mAh (7.4V)
Battery Charge Time:	30mins
Battery Run Time:	6mins
Dimensions:	85 x 52 x 34mm
Input:	5V (2.1A)
Inflation Time:	0-30psi (151 seconds)
IP Rating:	IP23
Maximum pressure:	120psi
Nett Weight:	0.150kg
Noise:	77.3dB
Noise Test Code:	EN ISO 2151:2008
Operating Temp:	-20 to 80°C
Pressure Units:	Bar, Psi
Range:	0-120psi(0-8bar)



4. CONTENTS

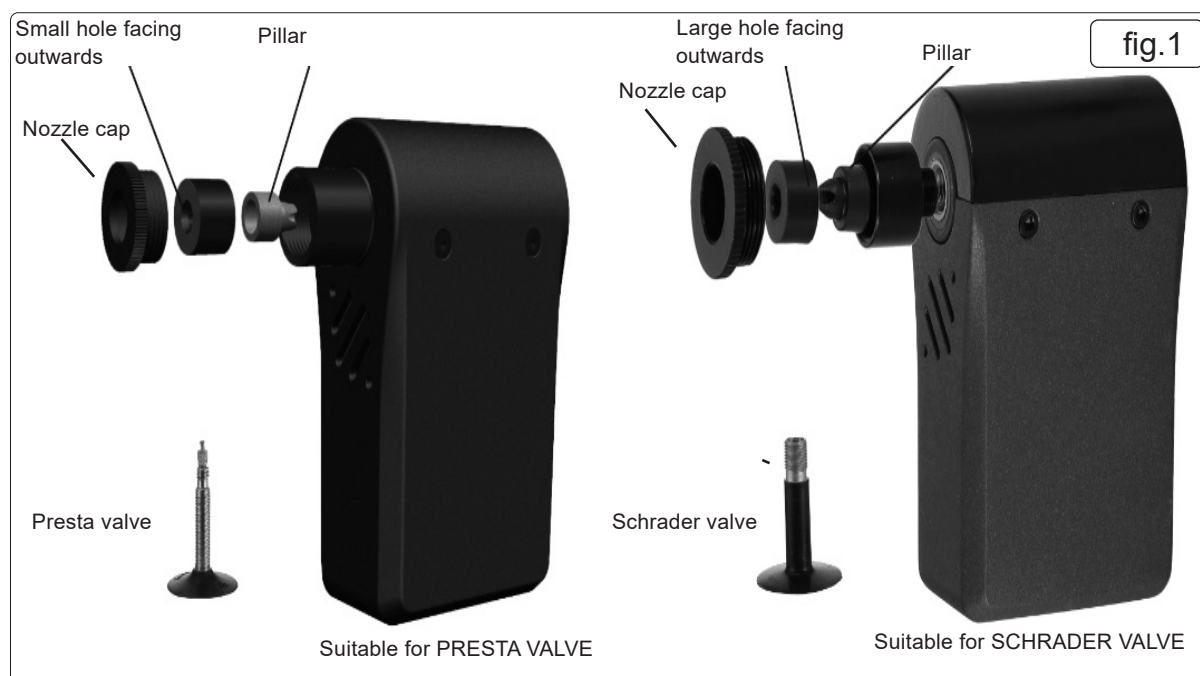


NOTE: Below the charging point is a cooling vent, this must stay open during the inflation process. **DO NOT** block or this could result in damage to the pump.

5. OPERATION

5.1. CONNECTION

5.1.1. Confirm the valve type. For Presta valve connection set up, install the pillar and then attach the seal part with the small hole facing outward, then add nozzle cap. For Schrader valve connection insert seal part with the large hole facing outward on the pillar and attach the nozzle cap. (Refer to fig.1).



5.2. POWER

5.2.1. Unscrew the valve cap on tyre.

5.2.2. Long press the Power button to turn on the pump. Select pressure reading (BAR/PSI) by holding the '+' and '-' button simultaneously. (Reads bar and psi).

5.2.3. INFLATION

5.2.4. Short press the '+' and '-' button to increase or decrease the preset value, holding down either button will increase or decrease the value rapidly.

- 5.2.5. Short press on the power button to start inflation. Connect pump to tyre valve and inflate the tyre to the desired pressure, the unit will auto-cut-off once preset pressure is reached. It is advised that the pressure reading is monitored throughout, a short press of the power button will stop inflation at any time.

- 5.2.6. The pump will automatically shut off if left inactive for 60 seconds or more.

- 5.2.7. Fasten the valve cap.

5.3. LITHIUM BATTERY CHARGING

- 5.3.1. Plug the USB cable (supplied) into the USB port and connect to the USB Type-C port on the pump. It is recommended to use a charger with a rating of 2.1A or above.

- 5.3.2. The pump uses a 3 bar indication symbol '---' on the display screen to show battery level. When fully charged all 3 bars will be solid (As shown in Fig 2.). As the pump is used the bars will decrease, 2 bars indicate medium battery level. 1 bar indicates low battery. No bars indicate the battery has no charge and the pump will power off shortly.

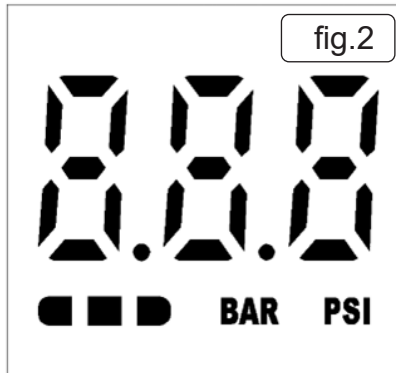
- 5.3.3. During charging the 3 bars '---' will flash from left to right.

- 5.3.4. If charging from a flat battery, after 10 minutes the left bar will become solid, the middle and right bars will continue to flash. After 20 minutes the left and middle bars will be solid, the right bar will continue to flash.

- 5.3.5. Once fully charged all 3 bars will remain solid and no longer flash.

- ❑ **WARNING!** For the purposes of recharging the battery, only use the detachable supply unit provided with this appliance.

NOTE: Dispose of broken unit in accordance with local authority battery regulations.



6. MAINTENANCE

- 6.1. Clean regularly with a damp cloth, do not use chemicals or soap. **DO NOT** submerge in water. Store in a dry, childproof area in storage bag provided. This helps prevent the compressor from damage and possible personal injuries.

- 6.1.1. When transporting the pump always do so by holding the body or in storage bag provided.

- 6.1.2. Through the normal years of wear the compressor will eventually become unserviceable. When this happens ensure that it is disposed of in accordance with local authority regulations.

- 6.1.3. Refrain from dismantling the pump. If an accident or breakdown occurs, immediately switch off the pump.

- 6.1.4. For replacements, please consult the contents list provided in these instructions.

- 6.1.5. Only use the pump for the intended use only.

6.1.6. BATTERY MAINTENANCE

- 6.1.7. Fully charge battery every 3 months: **WARNING!** For the purposes of recharging the battery, only use the cable provided with this appliance.

- 6.1.8. The compressor contains a built-in lithium battery, only replaceable by skilled persons.

6.2. BATTERY SAFETY PRECAUTIONS

- ❑ **WARNING!** Batteries contains Lithium-ion which is dangerous. Handle with care to avoid damage, fire, corrosion or personal injury.

- ✓ Charge battery prior to its first use. The battery will have been shipped in a low charge state. To reduce the risk of burns or fire:

- ✗ **DO NOT** attempt to open, disassemble, modify or service the battery pack.

- ✗ **DO NOT** crush, puncture, short external contacts or dispose of in fire or water.

- ✗ **DO NOT** expose to temperatures above 40°C (104°F).

- ❑ **WARNING!** Dispose of spent batteries correctly as they contain Lithium-ion. **DANGER! DO NOT** attempt to disassemble the battery. For safety and environmental reasons **DO NOT** discard in domestic waste or by burning. **ONLY** discard or recycle according to local authority regulations.

- ❑ **WARNING! DO NOT** allow a leaking battery to contact your person.



BATTERY REMOVAL

Under the Waste Batteries and Accumulators Regulations 2009, Jack Sealey Ltd are required to inform potential purchasers of products containing batteries (as defined within these regulations), that they are registered with Valpak's registered compliance scheme. Jack Sealey Ltd's Batteries Producer Registration Number (BPRN) is BPRN00705.



WEEE REGULATIONS

Dispose of this product at the end of its working life in compliance with the EU Directive on Waste Electrical and Electronic Equipment (WEEE). When the product is no longer required, it must be disposed of in an environmentally protective way. Contact your local solid waste authority for recycling information.



ENVIRONMENT PROTECTION

Recycle unwanted materials instead of disposing of them as waste. All tools, accessories and packaging should be sorted, taken to a recycling centre and disposed of in a manner which is compatible with the environment. When the product becomes completely unserviceable and requires disposal, drain any fluids (if applicable) into approved containers and dispose of the product and fluids according to local regulations.



REGISTER YOUR
PURCHASE HERE

Note: It is our policy to continually improve products and as such we reserve the right to alter data, specifications and component parts without prior notice.

Important: No Liability is accepted for incorrect use of this product.

Warranty: Guarantee is 12 months from purchase date, proof of which is required for any claim.

Jack Sealey Ltd t/a Sealey Group, Kempson Way, Suffolk Business Park, Bury St Edmunds, Suffolk, IP32 7AR UK
Jack Sealey (EU) Ltd t/a Sealey Group, Farney Street, Carrickmacross, Co. Monaghan, A81 PK68 Ireland
Tel: 01284 757500 • Email: sales@sealey.co.uk • Web: www.sealey.co.uk