

SEALEY POWER PRODUCTS



Environmental Protection.



Recycle unwanted materials instead of disposing of them as waste. All tools, accessories and packaging should be sorted, taken to a recycle centre and disposed of in a manner which is compatible with the environment.



When the product is no longer required, it must be disposed of in an environmentally protective way.



Rechargeable battery contains nickel cadmium (NiCad). It is recyclable. Take to your local recycling centre to be disposed of properly. Do not incinerate NiCad battery as it may explode when exposed to fire. Do not attempt to open battery pack.

4. DECLARATION OF CONFORMITY

NOTE: It is our policy to continually improve products and as such we reserve the right to alter data, specifications and component parts without prior notice.

IMPORTANT: No liability is accepted for incorrect use of this equipment.

WARRANTY: Guarantee is 12 months from purchase date, proof of which will be required for any claim.

INFORMATION: For a copy of our latest catalogue and promotions call us on 01284 757525 and leave your full name and address, including postcode.

Declaration of Conformity We, the sole UK importer, declare that the product listed below is in conformity with the following standards and directives.

**CORDLESS WET/DRY
RECHARGEABLE VAC 14.4V**

Model: CPV144

89/336/EEC EMC Directive

93/68/EEC CE Marking Directive

73/23/EEC Low Voltage Directive



The construction file for this product is held by the Manufacturer and may be inspected, by a national authority, upon request to Jack Sealey Ltd.

Signed by Mark Sweetman

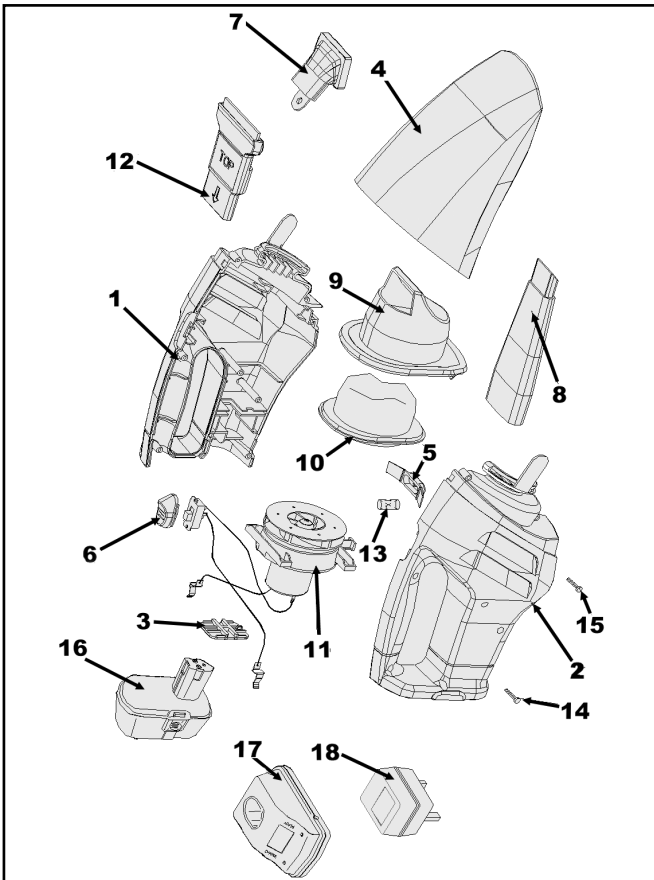
22nd April 2005

For Jack Sealey Ltd. Sole UK importer of Sealey Professional Tools.

Sole UK Distributor Sealey Group, Bury St. Edmunds, Suffolk.



SEALEY POWER PRODUCTS PARTS FOR: CORDLESS WET/DRY RECHARGEABLE VAC 14.4V MODEL No: CPV144



ITEM.	PART No.	DESCRIPTION.
1	CPV144.01	LEFT HOUSING
2	CPV144.02	RIGHT HOUSING
3	CPV144.03	CONTACT PLATE BRACKET
4	CPV144.04	NOZZLE
5	CPV144.05	RELEASE BUTTON
6	CPV144.06	PUSH BUTTON
7	CPV144.07	BRUSH
8	CPV144.08	CREVICE TOOL
9	CPV144.09	WATER SEPARATOR
10	CPV144.10	FILTER BRACKET
11	CPV144.11	MOTOR ASSEMBLY
12	CPV144.12	WET ADAPTOR
13	CPV144.13	RELEASE BUTTON SPRING
14	CPV144.14	SCREW
15	CPV144.15	SCREW
16	CPV144BP	CORDLESS BATTERY PACK
17	CPV144CB	CHARGING BASE FOR CPV 144
18	CPV144CP	CHARGER PACK FOR CPV 144

Sole UK Distributor Sealey Group, Bury St. Edmunds, Suffolk.



SEALEY POWER PRODUCTS INSTRUCTIONS FOR: CORDLESS WET/DRY RECHARGEABLE VAC 14.4V MODEL No: CPV144



IMPORTANT: PLEASE READ THESE INSTRUCTIONS CAREFULLY. NOTE THE SAFE OPERATIONAL REQUIREMENTS, WARNINGS AND CAUTIONS. USE THIS PRODUCT CORRECTLY AND WITH CARE FOR THE PURPOSE FOR WHICH IT IS INTENDED. FAILURE TO DO SO MAY CAUSE DAMAGE AND/OR PERSONAL INJURY AND WILL INVALIDATE THE WARRANTY. KEEP THESE INSTRUCTIONS FOR FUTURE USE.

1. SAFETY INSTRUCTIONS

1.1. GENERAL

- ✓ Keep the vac clean and in good condition.
- ✓ Replace or repair damaged parts. *Use recommended parts only. Unauthorised parts may be dangerous and will invalidate the warranty.*
- ✓ Keep children and non-essential persons away from the work area.
- x **DO NOT** leave the vac operating unattended.
- x **DO NOT** use the vac for a task it is not designed for.
- x **DO NOT** operate the vac when you are tired or under the influence of alcohol, drugs or intoxicating medication.
- x **DO NOT** operate the vac if any parts are missing or damaged, as this may cause failure and/or personal injury.
- ✓ Stay alert, watch what you are doing and use common sense when operating vac.
- ✓ Store idle tools out the reach of children and do not allow persons unfamiliar with the vac or these instructions to operate the vac.
- ✓ Ensure the switch is in the off position before inserting battery pack.
- ✓ Recharge only with the charger specified by the manufacturer.
- ✓ Use vac only with specifically designated battery packs.
- **WARNING!** Under extreme conditions, liquid may be ejected from the battery: avoid contact. If contact accidentally occurs, flush with water. If liquid contacts eyes, also seek medical help.
- **WARNING!** Sparks inside motor can ignite flammable vapours or dust. To avoid fire or explosion do not vacuum, or use near, flammable or combustible liquids or gases.
- x **DO NOT** vacuum anything that is burning or smoking such as cigarettes, matches or hot ashes.
- x **DO NOT** vacuum toxic materials to avoid health hazards from vapours or dusts.
- ✓ Keep the vac and all accessories where they will not be subjected to heat or flame. To avoid injury, shock, or fire, never use a damaged vac, cord or charger.
- x **DO NOT** put any object into openings.
- x **DO NOT** use with any opening blocked.
- ✓ Keep free of dust, lint, hair, and anything that may reduce air flow. Keep hair, loose clothing, fingers away from openings and moving parts.
- x **DO NOT** use without filter in place.
- x **DO NOT** use any charger other than the one with the vac.
- x **DO NOT** handle plug or charging unit with wet hands.
- ✓ Replace or repair damaged parts. *Use recommended parts only. Unauthorised parts may be dangerous and will invalidate the warranty.*

1.2. BATTERY SAFETY

BATTERIES MAY BE DANGEROUS IF NOT HANDLED WITH CARE AND ACCORDING TO THESE INSTRUCTIONS.

- ✓ Before removing battery from charger or vac, remove personal metallic items such as rings, bracelets, necklaces and watches.
- ✓ Ensure the charger is switched off and disconnected before attempting to remove the battery.
- ✓ If the batteries' terminals are corroded or dirty, clean them before replacing battery.
- x **DO NOT** dis-assemble the battery for any reason.
- **WARNING!** **DO NOT** allow metal objects to touch both battery terminals simultaneously. Arcing or short circuit will result.
- x **DO NOT** allow battery terminals to make contact with any other metallic part.
- x **DO NOT** leave battery in a discharged state, recharge battery immediately. If the vac is not in use, recharge the battery every three months. Dispose of the old battery in accordance with local authority acid battery regulations. **DO NOT** dispose of with regular refuse.

1.3. ELECTRICAL SAFETY.

USE ONLY SUPPLIED CHARGER PLUG FOR VAC.

⚠ WARNING! It is the user's responsibility to read, understand and comply with the following electrical instructions:

You must ensure the risk of electric shock is minimised by the installation of appropriate safety devices. An RCCB (Residual Current Circuit Breaker) should be incorporated in the main distribution board. We also recommend that an RCD (Residual Current Device) is used with all electrical products, particularly portable equipment which is plugged into an electrical supply not protected by an RCCB.

You must also read and understand the following instructions concerning electrical safety, 1.3.1. The Electricity At Work Act 1989 requires all portable electrical appliances, if used on business premises, to be tested by a qualified electrician, using a Portable Appliance Tester (PAT), at least once a year.

1.3.2. The Health & Safety at Work Act 1974 makes owners of electrical appliances responsible for the safe condition of the appliance and the safety of the appliance operator.

If in any doubt about electrical safety, contact a qualified electrician.

1.3.3. You must ensure that you:

- ✓ Inspect the charger plug, cable and connector for wear and damage to ensure items are safe before connecting to the mains power supply. If worn or damaged **DO NOT** use.
- ✓ Check cables are always protected against short circuit and overload.
- ✓ Important: Check that the voltage marked on the charger plug is the same as the power supply to be used.
- ✓ Uncoil the cable between charger and the charger base.
- x **DO NOT** pull the charger plug from the mains socket by the lead.
- x **DO NOT** use any other type of charger with this product.
- x **DO NOT** try to take the charger plug apart.
- x **DO NOT** use the charger plug to charge or power any other electrical item.
- x **DO NOT** get charger wet, or use in wet, damp conditions (for indoor use only).

2. SPECIFICATIONS.

Ideal for quick clearing up of spillage. Convenient for use in the home, workshop or car. Complete with three accessories, brush, crevice tool and wet adaptor. Features removable collection chamber for easy disposal of waste and removable battery with base charger.

Voltage: 14.4V
Charging Time: 5-7hrs
Weight: 1.4kg

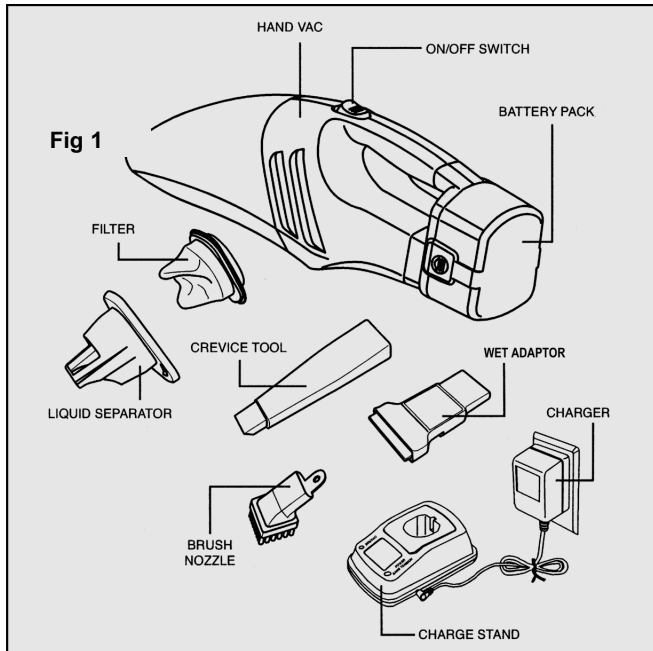


Fig 1

3. OPERATION.

3.1 Charging Battery Pack.

- ⚠ **WARNING!** Ensure you read and understand safety instructions before use.
- 3.1.1 Ensure your supply corresponds with the voltage rating of the charger, 230V 50Hz AC only.
- 3.1.2 Connect the charger to the power supply. A successful connection will show a green light on the charge stand.
- 3.1.3 Place the battery pack in the charge stand. Align the raised rib on battery pack with groove in the charging stand. (fig 2)
- 3.1.4 Press down on the battery pack to ensure contacts on battery pack engage properly with contacts in charging stand.
- 3.1.5 The charge indicator light (RED), located on the left side of the charging stand indicates the charger is operating properly. It will remain on until battery pack is removed from charging stand or charger is disconnected from the supply.

Note: The battery pack will become slightly warm to the touch while charging. This is normal and does not indicate a problem.

- ⚠ **IMPORTANT!** When using your vac continuously, the batteries will become hot. You should let a hot battery pack cool down for approximately 30 minutes before attempting to recharge.

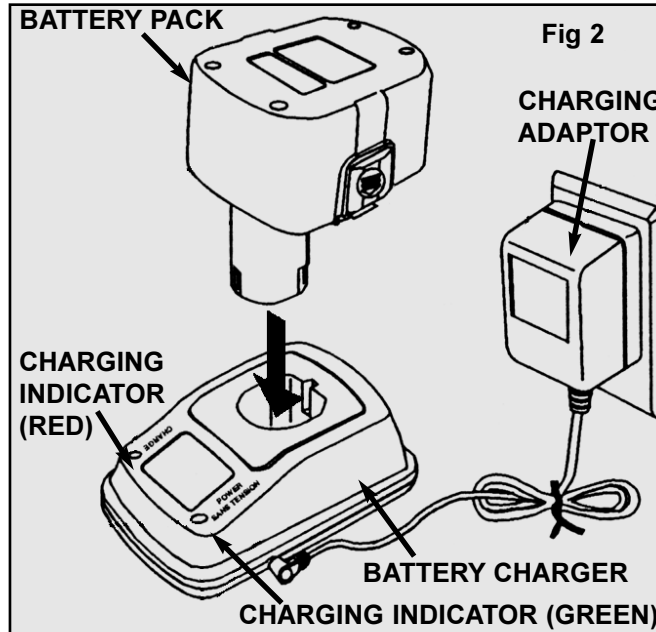


Fig 2

3.2 Operating Vac.

- 3.2.1 Place battery in hand vac. Align the rib on battery pack with groove inside hand vac.
- 3.2.2 To switch on, push forward on the On/Off switch on the top of the handle. When the switch is released the vac will stop.

3.3 To Vacuum Wet Spills.

NOTE: Before attempting to vacuum wet spills make sure the liquid separator and wet adaptor are fitted (fig 3).

- 3.3.1 When fitted simply press and hold On/Off switch (fig 1).
- 3.3.2 Upon completion of vacuuming simply release the On/Off switch.
- DO NOT Fill the collection tank past the full mark or you may damage the unit.**
- 3.3.3 To empty dust collector, position the vac over a suitable waste receptacle.
- 3.3.4 Hold the vac with the dust collector pointing downward.
- 3.3.5 Press down on the release button (fig 4) and separate the motor from the from the dust collector carefully to avoid spilling the contents.
- 3.3.6 Remove the filter and liquid separator from the dust collector (fig 3).
- 3.3.7 Drain the dust collector contents into the receptacle, clean and dry out the dust collector before re-inserting the liquid separator and filter.
- 3.3.8 Re-assemble the vac by hooking the projection on the top of the motor housing into the corresponding notch in the dust collector housing and swivel upwards until it latches audibly.

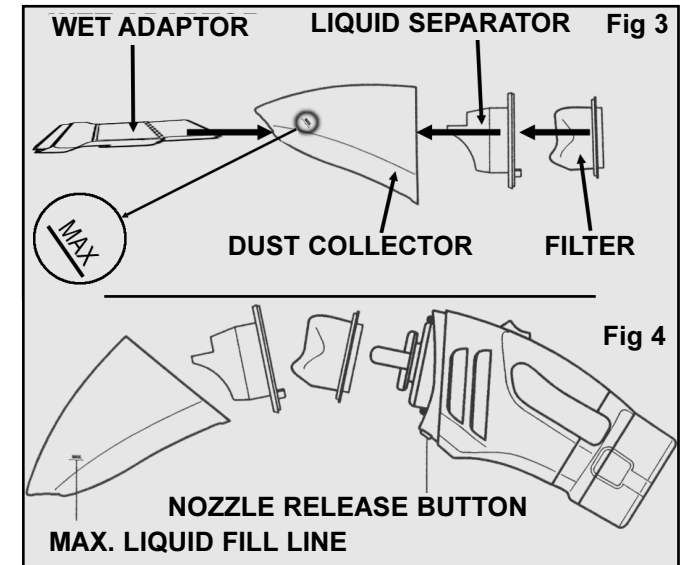


Fig 4

3.4 To vacuum dry spills, dust and dirt.

- 3.4.1 If fitted, remove the wet adaptor from the front of the dust collector.
- 3.4.2 Select the appropriate tool for the job and attach it to the dust collector, a simple push fit.
- 3.4.3 When fitted simply press and hold On/Off switch (fig 1) and proceed to vacuum.
- 3.4.4 Upon completion of vacuuming simply release the On/Off switch.
- 3.4.5 To empty dust collector, position the vac over a suitable waste receptacle.
- 3.4.6 Hold the vac with the dust collector pointing downward.
- 3.4.7 Press down on the release button (fig 4) and separate the motor from the from the dust collector carefully to avoid spilling the contents.
- 3.4.8 Remove the filter and liquid separator from the dust collector (fig 3).
- 3.4.9 Drain dust collector contents into the receptacle. The dust collector may be rinsed in warm soapy water but must be dried thoroughly before use.
- 3.4.10 To clean the filter, brush or shake the dirt out over a suitable receptacle. If necessary wash the filter in warm soapy water and dry thoroughly afterwards. This will be necessary after considerable use as the filter will restrict the airflow and performance of the vac if it becomes blocked.
- 3.4.11 Re-assemble the vac by re-inserting the liquid separator and the filter before hooking the projection on the top of the motor housing into the corresponding notch in the dust collector housing and swivel upwards until it latches audibly.

Store the vac in a dry location out of reach of children. If the vac is to be stored for a long period of time remove the battery from the vac and store in a safe location.

