



SV10.8 SERIES CORDLESS HEDGE TRIMMER 10.8V - BODY ONLY

MODEL NO: CP108VHTBO

Thank you for purchasing a Sealey product. Manufactured to a high standard, this product will, if used according to these instructions, and properly maintained, give you years of trouble free performance.

IMPORTANT: PLEASE READ THESE INSTRUCTIONS CAREFULLY. NOTE THE SAFE OPERATIONAL REQUIREMENTS, WARNINGS & CAUTIONS. USE THE PRODUCT CORRECTLY AND WITH CARE FOR THE PURPOSE FOR WHICH IT IS INTENDED. FAILURE TO DO SO MAY CAUSE DAMAGE AND/OR PERSONAL INJURY AND WILL INVALIDATE THE WARRANTY. KEEP THESE INSTRUCTIONS SAFE FOR FUTURE USE.



Refer to instruction manual



Wear protective gloves



Wear eye protection



Wear ear protection



Wear protective clothing



Risk of electric shock



Wear appropriate footwear



Do not use in rain



Keep bystanders away



DANGER

Keep hands away from blade

1. SAFETY

1.1. GENERAL POWERED TOOL SAFETY WARNINGS

Read all the safety warnings, instructions, illustrations, and specifications provided with this power tool. Failure to follow all instructions listed below may result in electric shock, fire and/or serious injury.

- ✓ Save all warning and instructions for future reference.
 - ✓ Inspect and ensure equipment is in good working order before use.
 - ✓ Maintain and clean tool and battery pack regularly. Check air holes are clear.
 - ❑ **WARNING!** Hold the power tool by insulated gripping surfaces only, as the cutter blade may contact hidden wiring. Cutter blades contacting a "live" wire may make exposed metal parts of the power tool "live" and could give the operator an electric shock.
 - ❑ **WARNING!** Risk assess the work area. Keep bystanders and children away from the work area. **DO NOT** operate with anyone or pets nearby. Check intended work area for wildlife.
 - ❑ **WARNING!** Prevent unintentional starting. Ensure the switch is in the **OFF** position before connecting to the power source and/or battery pack, picking up or carrying the tool. Carrying power tools with your fingers on the switch or energising power tools that have the switch on invites accidents.
 - ❑ **WARNING!** Avoid body contact with earthed or grounded surfaces, such as pipes, radiators, ranges, and refrigerators. There is an increased risk of electric shock if your body is earthed or grounded.
 - ❑ **WARNING!** Keep work area clean and well lit. Cluttered or dark areas invite the risk of accidents.
 - ❑ **WARNING!** Remove any adjusting key or wrench before turning the power tool on. A wrench or a key left attached to a rotating part of a power tool may result in personal injury.
 - ❑ **WARNING! DO NOT** allow water to enter into power tool. This will increase the risk of an electric shock.
 - ❑ **WARNING!** Under abusive conditions, liquid may be ejected from the battery; avoid contact. If contact accidentally occurs, flush with water. If liquid contacts eyes, additionally seek medical help. Liquid ejected from the battery may cause irritation or burns.
 - ❑ **WARNING!** Always check the hedge before cutting for foreign objects, electrical cables etc.
 - ❑ **WARNING!** Use of the power tool, accessories, and tool bits etc, in accordance with these instructions, taking into account the working conditions, and the work to be performed. Use of the power tool for operations different from those intended could result in a hazardous situation and serious injury.
 - ✗ **DO NOT** use if power tool vibrates abnormally, switch off, remove battery and then inspect.
 - ✗ **DO NOT** touch hazardous moving parts. Allow power tool to come to a complete stop first.
 - ✗ **DO NOT** use if damaged. **DO NOT** operate with defective guards or shields or without safety devices, and protective clothing.
 - ✗ **DO NOT** use for a task it was not designed to perform.
 - ✓ Always store with the battery removed and separate from the power tool, in a dry, childproof location.
 - ✗ **DO NOT** force the power tool. Use the correct power tool for your application. The correct power tool will do the job better and safer at the rate for which it was designed.
 - ✓ The hedge trimmer is intended to be used by the operator at ground level and not on ladders or any other unstable support.
 - ✓ Hedge trimmer is fitted with a hand shield.
 - ✓ Hedge trimmer has a measured Sound power level 96dB. And has been tested in accordance with the outdoors Noise by Equipment Regulations 2001.
 - ✓ Avoid body contact with earthed or grounded surfaces, such as pipes, radiators, ranges and refrigerators. There is an increased risk of electric shock if your body is earthed or grounded.
- ### 1.2. WORK AREA SAFETY
- ✓ Keep work area clean and well lit. Cluttered or dark areas invite accidents.
 - ✗ **DO NOT** operate power tools in explosive atmospheres, such as in the presence of flammable liquids, gases, or dust. Power tools create sparks which may ignite the dust or fumes.
 - ✓ Keep children and bystanders away whilst operating a power tool. Distractions can cause you to lose control.

1.3. ELECTRICAL SAFETY

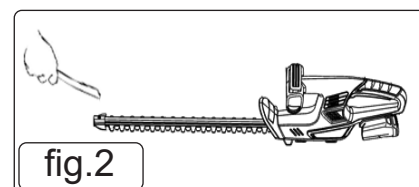
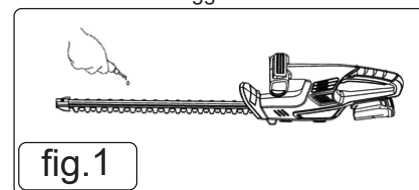
- ✓ Avoid body contact with earthed or grounded surfaces, such as pipes, radiators, ranges, and refrigerators. There is an increased risk of electric shock if your body is earthed or grounded.
- ✗ **DO NOT** expose power tools to rain or wet conditions, especially when there is risk of lightning. This decreases the risk of being struck by lightning. Water entering a power tool will increase the risk of electric shock.
- **WARNING!** Remove battery before attempting any cleaning, maintaining or storing the device.
- ✓ There are no parts inside the equipment which require additional maintenance.
- ✓ Store the hedge trimmer with blade guard fitted.
- ✓ Maintain power tools. Check for misalignment or binding of the moving parts, breakage of parts and any other condition that may affect the power tool's operation. If damaged, have the power tool repaired before use. Many accidents are caused by poorly maintained power tools.
- ✓ Have your power tools serviced by a qualified repair person using only identical replacement parts. This will ensure that the safety of the power tool is maintained.
- ✓ Never disassemble the hedge trimmer yourself. For servicing and repair always contact your local Sealey Service Centre. Or place of purchase.

1.4. PERSONAL SAFETY

- **WARNING!** Keep all parts of the body away from the cutter blade. Do not remove cut material or hold material to be cut when blades are moving. Make sure the switch is **OFF** when clearing jammed material. A moment of inattention while operating the hedge trimmer may result in serious personal injury.
- **WARNING!** Carry the hedge trimmer by the handle with the cutter blade stopped. When transporting or storing the hedge trimmer always fit the cutting device cover. Proper handling of the hedge trimmer will reduce possible personal injury from the cutter blades.
- ✓ Stay alert, watch what you are doing and use common sense when operating a power tool.
- ✓ When using the tool, **DO NOT** wear cloth work gloves which may be entangled. The entanglement of cloth work gloves in the moving parts may result in personal injury. Work gloves of stout leather are part of the basic equipment of the hedge trimmer and must always be worn when working with it.
- ✗ **DO NOT** use a power tool whilst you are tired or under the influence of drugs, alcohol, or medication. A moment of inattention whilst operating power tools may result in serious injury.
- ✓ Use personal protective equipment. Always wear eye protection. Protective equipment such as dust mask, non-skid safety shoes, hard hat or hearing protection use for appropriate conditions will reduce personal injuries.
- ✓ Prevent unintentional starting. Ensure the switch is in the off position before connecting to power source and/or battery pack, picking up or carrying the tool. Carrying power tools with your fingers on the switch or energising power tools that have the switch on invites accidents.
- ✓ Remove any adjusting key or wrench before turning the power tool on. A wrench or a key left attached to a rotating part of the power tool may result in personal injury.
- ✗ **DO NOT** over reach. Keep proper footing and balance at all times. This enables better control of the power tool in unexpected situations.
- ✓ Dress properly. **DO NOT** wear loose clothing or jewellery. Keep your hair, clothing and gloves away from moving parts. Loose clothes, jewellery or long hair can be caught in moving parts.
- ✓ Keep all parts of the body away from the blade. **DO NOT** remove cut material or hold material to be cut when blades are moving. Blades continue to move after the switch is turned off. A moment of inattention while operating the hedge trimmer may result in serious personal injury.
- ✓ Use personal protective equipment. Always wear eye protection. Protective equipment such as dust mask, non-skid safety shoes, hard hat or hearing protection use for appropriate conditions will reduce personal injuries.
- ✓ Carry the hedge trimmer by the handle with the blade stopped and taking care not to operate any power switch. Proper carrying of the hedge trimmer will decrease the risk of inadvertent starting and resultant personal injury from the blades.
- ✓ Prevent unintentional starting. Ensure the switch is in the off position before connecting to power source and/or battery pack, picking up or carrying the tool. Carrying power tools with your fingers on the switch or energising power tools that have the switch on invites accidents.
- ✓ Remove any adjusting key or wrench before turning the power tool on. A wrench or a key left attached to a rotating part of the power tool may result in personal injury.
- ✗ **DO NOT** overreach. Keep proper footing and balance at all times. This enables better control of the power tool in unexpected situations.
- ✓ Dress properly. **DO NOT** wear loose clothing or jewellery. Keep your hair and clothing away from moving parts. Loose clothes, jewellery or long hair can be caught in moving parts.
- ✓ If devices are provided for the connection of dust extraction and collection facilities, ensure these are connected and properly used. Use of dust collection can reduce dust-related hazards.
- ✗ **DO NOT** let familiarity gained from frequent use of tools allow you to become complacent and ignore tool safety principles. A careless action can cause severe injury within a fraction of a second.
- ✓ **CAUTION:** Before installing the battery cartridge into the hedge trimmer, always check to see that the switch trigger and lock-off lever actuates properly and returns to the **"OFF"** position when released. **NOTE: DO NOT** pull the switch trigger hard without pressing the lock-off lever. This can cause switch breakage.
- ✓ Be careful not to allow the shear blades to contact the ground. The hedge trimmer may recoil and cause injury.
- ✓ Always use the side grip (auxiliary handle) and firmly hold the hedge trimmer by both side grip and switch handle during operations.

1.5. POWER TOOL USE AND CARE

- ✗ **DO NOT** force the power tool. Use the correct power tool for your application. The correct power tool will do the job better and safer at the rate for which it was designed.
- ✗ **DO NOT** use the power tool if the switch does not turn it **ON** and **OFF**. Any power tool that cannot be controlled with the switch is dangerous and must be repaired. Contact place of purchase, or Sealey Service centre.
- ✓ The cutters should be cleaned and lubricated at regular intervals in order to ensure best



performance at all times. Remove deposits with a brush and apply a thin film of oil. See (fig.1 & 2).

- ✓ Keep cutting tools sharp and clean. Properly maintained cutting tools with sharp cutting edges are less likely to bind and are easier to control.
- ✓ Remove the battery pack from the power tool before making any adjustments, changing accessories, or storing power tools. Such preventive safety measures reduce the risk of starting the power tool accidentally.
- ✓ Store idle power tools out of the reach of children and do not allow persons unfamiliar with these power tools or these instructions to operate the power tool. Power tools are dangerous in the hands of untrained users.
- ✓ Maintain power tools. Check for misalignment or binding of the moving parts, breakage of parts and any other condition that may affect the power tool's operation. If damaged, have the power tool repaired before use. Many accidents are caused by poorly maintained power tools.
- ✓ Use the power tool, accessories, and tool bits etc, in accordance with these instructions, taking into account the working conditions and the work to be performed. Use of the power tool for operations different from those intended could result in a hazardous situation.
- ✓ Keep all parts of the body away from the cutter blade. **DO NOT** remove cut material or hold material to be cut when blades are moving.
- ✓ Make sure the switch is off when clearing jammed material. A moment of inattention while operating the hedge trimmer may result in serious personal injury.
- ✓ Carry the hedge trimmer by the handle with the cutter blade stopped. When transporting or storing the hedge trimmer always fit the cutting device cover. Proper handling of the hedge trimmer will reduce possible personal injury from the cutter blades.
- ✓ Hold the power tool by insulated gripping surfaces only, because the cutter blade may contact hidden wiring. Cutter blades contacting a "live" wire may make exposed metal parts of the power tool "live" and could give the operator an electric shock.
- ✓ Hold the hedge trimmer by insulated gripping surfaces only, because the blade may contact hidden wiring. Blades contacting a "live" wire may make exposed metal parts of the hedge trimmer "live" and could give the operator an electric shock.
- ✓ Remove the battery pack from the power tool before making any adjustments, changing accessories, or storing power tools. Such preventive safety measures reduce the risk of starting the power tool accidentally.
- ✓ When clearing jammed material or servicing the unit, make sure all power switches are off and the battery pack is removed or disconnected. Unexpected actuation of the hedge trimmer while clearing jammed material or servicing may result in serious personal injury.
- ✓ Store idle power tools out of the reach of children and do not allow persons unfamiliar with these power tools or these instructions to operate the power tool. Power tools are dangerous in the hands of untrained users.
- ✓ Maintain power tools and accessories. Check for misalignment or binding of the moving parts, breakage of parts and any other condition that may affect the power tool's operation. If damaged, have the power tool repaired before use. Many accidents are caused by poorly maintained power tools.
- ✓ Keep cutting tools sharp and clean. Properly maintained cutting tools with sharp cutting edges are less likely to bind and are easier to control.
- ✓ Use the power tool, accessories and tool bits etc, in accordance with these instructions, taking into account the working conditions and the work to be performed. Use of the power tool for operations different from those intended could result in a hazardous situation.
- ✓ Keep handles and grasping surfaces dry, clean and free from oil and grease. Slippery handles and grasping surfaces do not allow for safe handling and control of the tool in unexpected situations.

1.6. BATTERY TOOL USE AND CARE

- ✓ Recharge only with the charger specified by the manufacturer. A charger that is suitable for one type of battery pack may create a risk of fire when used with another battery pack.
- ✓ Use power tools only with specifically designated battery packs. Use of any other battery packs may create a risk of injury and fire.
- ✓ When battery pack is not in use, keep it away from other metal objects, like paper clips, coins, keys, nails, screws, or other small metal objects, that can make a connection from one terminal to another. Shorting the battery terminals together may cause burns or a fire.
- ✓ Under abusive conditions, liquid may be ejected from the battery; avoid contact. If contact accidentally occurs, flush with water. If liquid contacts eyes, additionally seek medical help.
- **WARNING!** If electrolyte gets into your eyes, rinse them out with clear water and seek medical attention straight away. It may result in loss of your eyesight. Liquid ejected from the battery may cause irritation or burns.
- ✗ **DO NOT** short the battery cartridge. Liquid ejected from the battery may cause irritation or burns.
- ✓ Battery powered - Operates using 1 x 10.8V batteries from the Sealey CP108 Series (batteries must be of the same Ah rating).
- **WARNING!** Remove battery before: performing maintenance, carrying out adjustments, inspecting the machine after striking an object, before clearing a blockage, before leaving the tool unattended, before moving to the next job location.
- ✗ **DO NOT** dispose of the battery(ies) in a fire. The cell may explode. Check with local codes for possible special disposal instructions.
- ✗ **DO NOT** open or mutilate the battery(ies). Released electrolyte is corrosive and may cause damage to the eyes or skin. It may be toxic if swallowed.
- ✗ **DO NOT** use a damaged battery.
- ✗ Never service damaged battery packs. Service of battery packs should only be performed by the manufacturer or authorised Sealey stockist.
- ✗ **DO NOT** expose battery cartridge to water or rain.
- ✗ **DO NOT** store the hedge trimmer and battery cartridge in locations where the temperature may reach or exceed 50 °C (122 °F).
- ✗ **DO NOT** incinerate the battery cartridge even if it is severely damaged or is completely worn out. The battery cartridge can explode in a fire.
- ✗ **DO NOT** charge battery in rain, or in wet locations.
- ✓ Be careful not to drop or strike battery.
- ✓ Use the batteries only with the products specified by Sealey. Installing the batteries to non-compliant products may result in a fire, excessive heat, explosion, or leak of electrolyte.
- ✓ Charge the battery cartridge before completely discharged. Always stop tool operation and charge the battery cartridge when you notice less tool power.
- ✓ Never recharge a fully charged battery cartridge. Overcharging shortens the battery service life.
- ✗ **DO NOT** use a battery pack or tool that is damaged or modified. Damaged or modified batteries may exhibit unpredictable behaviour resulting in fire, explosion or risk of injury.
- ✗ **DO NOT** expose a battery pack or tool to fire or excessive temperature. Exposure to fire or temperature above 130°C may cause explosion.
- ✓ Follow all charging instructions and do not charge the battery pack or tool outside the temperature range specified in the instructions. Charging improperly or at temperatures outside the specified range may damage the battery and increase the risk of fire.

- ✓ Charge the battery cartridge with room temperature at 5 °C - 45 °C. Let a hot battery cartridge cool down before charging it.

2. INTRODUCTION

Lightweight, cordless hedge trimmer makes gardening easy, clean and effective. Two stage trigger operation and blade tip and blade head protectors fitted for added safety.

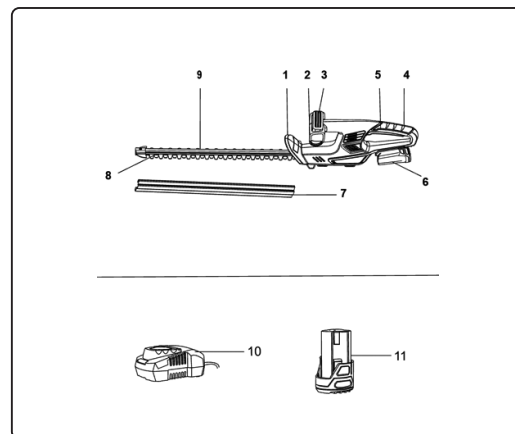
3. SPECIFICATION

Model No	CP108VHTBO
Battery	10.8V 2Ah - 4Ah Lithium-ion (not included)
Blade Length	45cm
Consumable Parts	CP108VBP - 2Ah Battery, CP108VBP4 - 4Ah Battery
Nett Weight	1.68kg
No-Load Speed	1400rpm
Teeth Distance	16 mm

IDENTIFICATION

1	Safety guard
2	Front handle
3	Safety lock switch
4	Rear handle
5	On/Off trigger
6	Battery compartment
7	Blade cover
8	Blade
9	Blade support
10	Battery charger (not included)
11	Battery pack (not included)

Voltage:	10.8V Lithium-ion
Vibration/Uncertainty	2.371/1.5m/s ²
Noise Power:	86 dB(A)
Noise Pressure:	78 dB(A)
RECOMMENDED	
Consumable Parts	CP108VBP - 2Ah Battery, CP108VBP4 - 4Ah Battery CP108VMC-Fast Charge Battery Charger 10.8V CP108VMC2-Fast Charge Dual Battery Charger for 10.8V



4. ASSEMBLY

- 4.1. This cordless hedge trimmer comes fully assembled.

5. OPERATION

5.1.1. CHARGING THE BATTERY

- 5.1.2. Before first use, please fully charge the battery pack connect the charger plug to the power supply, the green LED will light up. Insert the battery pack into the docking station of charger, the red LED will light up. After the battery pack is fully charged, the Green LED will light up.

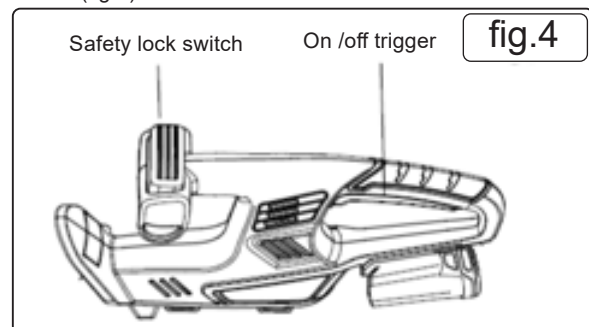
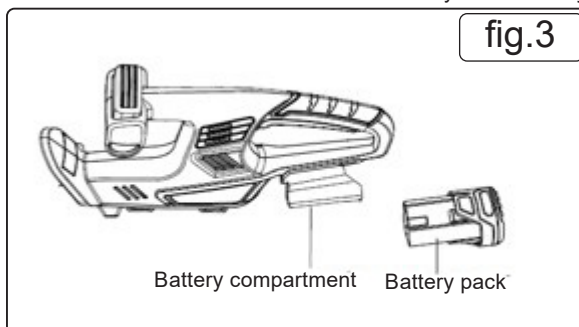
5.1.3. NOTE: The charger's docking station does not automatically turn off after the battery pack is fully charged.

5.1.4. NOTE: The charger may become warm when charging, this is normal and does not indicate a fault with the charger.

5.1.5. INSTRUCTIONS FOR USE

CAUTION: Always switch off the hedge trimmer before installing or removing of the battery cartridge.

- 5.1.6. Always keep both hands on the hedge trimmer handles. Never hold shrubs with one hand and operate the hedge trimmer with the other. Improper handling of the hedge trimmer could result in serious injury.
- 5.1.7. Remove the blade cover and insert the battery in the battery compartment (fig.3).



- 5.1.8. To start the hedge trimmer, squeeze the safety lock switch, then squeeze the On/Off trigger (fig.4).

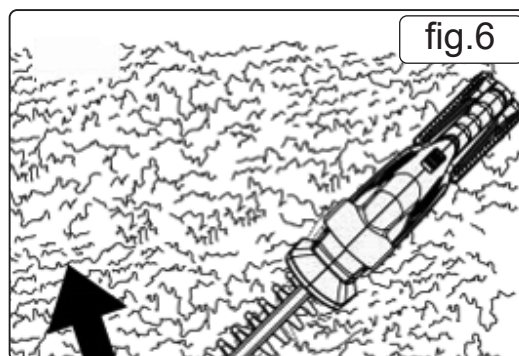
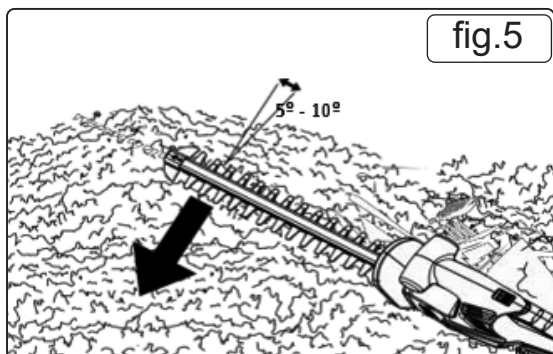
- 5.1.9. To turn the tool off, release the On/off trigger (fig.4). Test before use.

- 5.1.10. Never cut near electric cords or power lines. If the blade jams on any electrical cable, **DO NOT TOUCH THE BLADE. IT CAN CONDUCT ELECTRICITY AND FATALLY SHOCK YOU!**

Instead, continue to hold the hedge trimmer by the insulated rear handle, and lay it down and away from you in a safe manner. Make sure that electrical service to the damaged electrical cable is disconnected before attempting to free the hedge trimmer blade. Contact with the blade, other conductive parts of the hedge trimmer, or live electric cords or power lines will result in death by electrocution or serious injury.

- 5.1.11. Clear the area to be cut before each use. Remove all objects such as cords, lights, wire, or loose string which can become entangled in the cutting blade and create a risk of electric shock and serious personal injury.

- 5.1.12. When trimming new growth, use a wide sweeping action so that the stems are fed directly into the blade. Do not try to cut branches that are thicker than 0.55 in. (1.4 cm) or those that are obviously too large to feed into the blade. Use lopping shears, a hand saw, or a pruning saw to cut out thick branches first. If a substantial cut is necessary, cut a little at a time in several passes. Cut both sides of the hedge first and then the top.
- 5.1.13. To perform a horizontal cut, hold the hedge trimmer with the blade tilted 5-10 degrees to your cutting object; this makes the operation easier and ensures a better cut (fig.5).



- 5.1.14. To perform a vertical cut, start trimming at the bottom and sweep up for even cutting. Swing the blades in an arc towards the outsides of the hedge so that the cuttings are swept on the ground (fig.6).

5.1. CUTTING TIPS

- 5.1.1. Hold the tool firmly in both hands. Always keep your dominant hand on the switch handle and your non-dominant hand on the front. Never hold the tool by the blade guard. Keep unit below waist level.
- 5.1.2. A wide, sweeping motion, feeding the blade teeth through the twigs is most effective. A slight downward tilt of the blade in the direction of the motion gives the best cut.
- 5.1.3. Begin at the bottom and sweep up.
- × **DO NOT** force the hedge trimmer through heavy shrubbery. This can cause the blades to bind and slow down. If the blades slow down, reduce the pace.
- 5.1.4. If blades do become jammed, stop the motor, allow the blades to stop, and remove the battery before attempting to remove the obstruction.
- 5.1.5. If desired, you can use a string to help cut your hedge level. Decide how high you want the hedge. Stretch a piece of string along the hedge at the desired height.
- 5.1.6. Trim the hedge just above the guide line of string. Trim the side of a hedge so that it will be slightly narrower at the top. More of the hedge will be exposed when shaped this way, and it will be more uniform.
- 5.1.7. Wear gloves when trimming thorny or prickly growth. When trimming new growth, use a wide sweeping action, so that the stems are fed directly into the cutting blade. Older growth will have thicker stems and will be trimmed easiest by using a sawing movement.

6. MAINTENANCE

- **WARNING!** Before each use check the trimmer for any obvious defects such as loose worn or damaged parts.
- × **DO NOT** use the trimmer if there is any sign of damage or if cutting edges are blunt this will over stress the motor of the machine.
- 6.1. Check the outer sections of the body and safety switch for any damage and if present get a qualified person to replace.
- 6.2. Carry out the following maintenance and cleaning work regularly.
- 6.3. Every time you use the trimmer clean all parts especially the ventilation slots and under the safety guard and remove any moisture debris or dust and store in a clean dry environment.
- × **DO NOT** use or submerge the trimmer in water or use cleaning agents of solvents these may damage the materials present on the trimmer.
- 6.4. It is advised to frequently apply a small amount of light oil on the blade prior to use and after cleaning before storing in a dry place with its blade guard in place.
- 6.5. SHARPENING THE BLADES**
- 6.5.1. The blade must be re-sharpened if cutting performance and behaviour begin to deteriorate (i.e. if blades frequently snag on branches).
- 6.5.2. Stop the motor and remove the battery. Clamp the blade in a vice.
- 6.5.3. File the exposed cutting surface of each blade tooth with a smooth round file. Be sure to retain the original angle of the tooth when filing.
- 6.5.4. Remove the blade from the vice, and power on the motor until the unsharpened edges of the remaining blade teeth are exposed.
- 6.5.5. Remove the battery and repeat the sharpening procedure as necessary.
- 6.6. SERVICE**
- ✓ Have your power tool serviced by a qualified repair person using only identical replacement parts. This will ensure that the safety of the power tool is maintained.

WARNING! – Risk of Hand Arm Vibration Injury.

This tool may cause Hand Arm Vibration Syndrome if its use is not managed adequately.

This tool is subject to the vibration testing section of the Machinery Directive 2006/42/EC.

This tool is to be operated in accordance with these instructions.

Measured vibration emission value (a): 2,371 m/s²

Uncertainty value (k): 1.5m/s²

Please note that the application of the tool to a sole specialist task may produce a different average vibration emission. We recommend that a specific evaluation of the vibration emission is conducted prior to commencing with a specialist task.

A health and safety assessment by the user (or employer) will need to be carried out to determine the suitable duration of use for each tool.

NB: Stated Vibration Emission values are type-test values and are intended to be typical.

Whilst in use, the actual value will vary considerably from and depend on many factors.

Such factors include; the operator, the task or consumable.

The state of maintenance of the tool itself is also an important factor, a poorly maintained tool will also increase the risk of Hand Arm Vibration Syndrome.

Health surveillance.

We recommend a programme of health surveillance to detect early symptoms of vibration injury so that management procedures can be modified accordingly.

The declared vibration total value(s) and the declared noise emission value(s) have been measured in accordance with a standard test method and may be used for comparing one tool with another.

The declared vibration total values and the declared noise emission values may also be used in a preliminary assessment of exposure.

The vibration and noise emissions during actual use of the power tool can differ from the declared values depending on the ways in which the tool is used, especially what kind of workpiece is processed.

The need to identify safety measures to protect the operator that are based on an estimation of exposure in the actual condition of use.

Personal protective equipment.

We are not aware of any personal protective equipment (PPE) that provides protection against vibration injury that may result from the uncontrolled use of this tool. We recommend a sufficient supply of clothing (including gloves) to enable the operator to remain warm and dry and maintain good blood circulation in fingers etc. Please note that the most effective protection is prevention, please refer to the Correct Use and Maintenance section in these instructions. Guidance relating to the management of hand arm vibration can be found on the HSE website

www.hse.gov.uk - Hand-Arm Vibration at Work.

The machine may exceed 85 dB (A). The operator will require noise protection measures if this is the case. The noise was measured in accordance with EN 60745-1. The value of the vibrations emitted by the handle was determined in accordance with EN 60745-1.

The specified vibration value was established in accordance with a standardized testing method. It may change according to how the electric equipment is used and may exceed the specified value in exceptional circumstances.



BATTERY REMOVAL

Remove the battery. Dispose of according to local government guidelines.

Under the Waste Batteries and Accumulators Regulations 2009, Jack Sealey Ltd are required to inform potential purchasers of products containing batteries (as defined within these regulations), that they are registered with Valpak's registered compliance scheme. Jack Sealey Ltd's Batteries Producer Registration Number (BPRN) is BPRN00705.



WEEE REGULATIONS

Dispose of this product at the end of its working life in compliance with the EU Directive on Waste Electrical and Electronic Equipment (WEEE). When the product is no longer required, it must be disposed of in an environmentally protective way. Contact your local solid waste authority for recycling information.



ENVIRONMENT PROTECTION

Recycle unwanted materials instead of disposing of them as waste. All tools, accessories and packaging should be sorted, taken to a recycling centre and disposed of in a manner which is compatible with the environment. When the product becomes completely unserviceable and requires disposal, drain any fluids (if applicable) into approved containers and dispose of the product and fluids according to local regulations.



REGISTER YOUR PURCHASE HERE

Note: It is our policy to continually improve products and as such we reserve the right to alter data, specifications and component parts without prior notice.

Important: No Liability is accepted for incorrect use of this product.

Warranty: Guarantee is 12 months from purchase date, proof of which is required for any claim.

Sealey Group, Kempson Way, Suffolk Business Park, Bury St Edmunds, Suffolk. IP32 7AR



01284 757500



sales@sealey.co.uk



www.sealey.co.uk