



**INSTRUCTIONS FOR:
JANITORIAL/HOUSEKEEPING CART
MODEL NO: BM33**

Thank you for purchasing a Sealey product. Manufactured to a high standard this product will, if used according to these instructions and properly maintained, give you years of trouble free performance.



IMPORTANT: READ THESE INSTRUCTIONS CAREFULLY. NOTE THE SAFE OPERATIONAL REQUIREMENTS, WARNINGS AND CAUTIONS. USE THIS TROLLEY CORRECTLY AND WITH CARE FOR THE PURPOSE FOR WHICH IT IS INTENDED. FAILURE TO DO SO MAY CAUSE DAMAGE OR PERSONAL INJURY AND WILL INVALIDATE THE WARRANTY. RETAIN THESE INSTRUCTIONS FOR FUTURE USE.

1. SAFETY INSTRUCTIONS

1.1. GENERAL SAFETY

- ☐ **WARNING! Ensure Health & Safety, local authority, and general workshop practice regulations are adhered to when using this trolley.**
- x **DO NOT** overload the trolley.
- x **DO NOT** drop loads on to shelves.
- x **DO NOT** place hot (above 100°C) items on to shelves.
- ✓ Load shelves with the heaviest items on the lower shelves.
- ✓ Use the trolley in a suitable work area.
- ✓ Keep the work area clean, uncluttered and ensure there is adequate lighting.
- ✓ Keep the trolley clean and tidy in accordance with good workshop practice.
- x **DO NOT** use the trolley for any purpose other than that for which it is designed.
- x **DO NOT** stand on the trolley, use it as a ladder or allow others to ride on the trolley.
- ✓ Use the wheel locks to prevent the trolley from inadvertently moving.
- x **DO NOT** leave unattended, especially when loaded, unless the wheels are locked, chocked or the trolley otherwise secured.
- x **DO NOT** use trolley on uneven ground and **DO NOT** run over curbs or steps - use a ramp.
- x **DO NOT** use trolley if any part is significantly damaged, paying particular attention to the wheels.
- ✓ Keep children and unauthorised persons away from the work area.



2. DESCRIPTION

Manufactured from high impact polypropylene. This janitorial/housekeeping cart is ideal for storing and transporting a variety of cleaning equipment. Fitted with three internal shelves and two lockable doors to keep goods secure. Also features a large open top storage area with multiple compartments. Fitted with two large detachable vinyl zip bags, two 8" lockable castors. Features 4 broom holders on back of unit and corner bumpers to prevent damage to walls and doors.

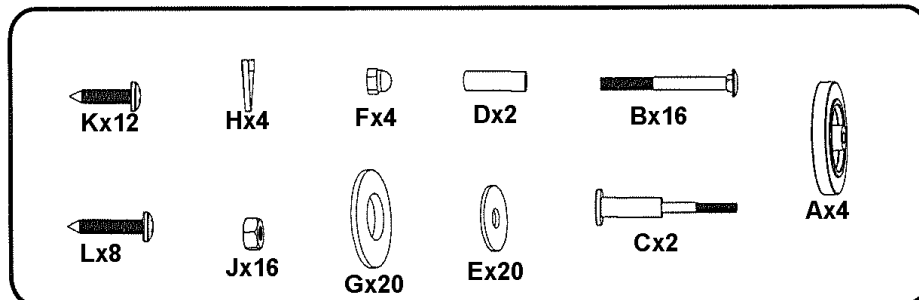
3. TECHNICAL SPECIFICATIONS

Dimensions:.....1155 x 570 x 1128mm

4. CONTENTS

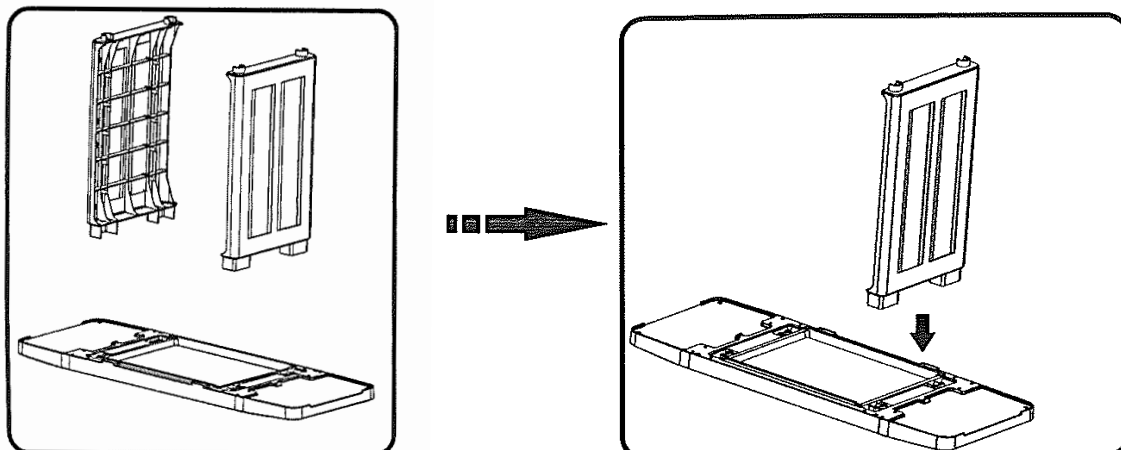
Carefully unpack the product and check the contents against the diagram and parts list below. Should any items be missing or damaged contact your Sealey dealer.

5. ASSEMBLY



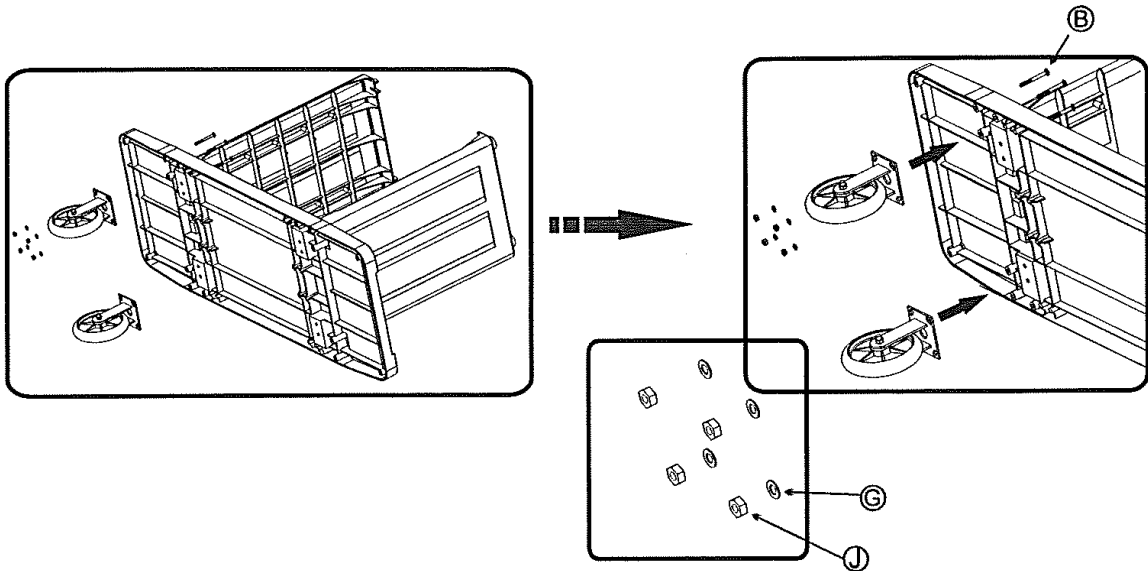
5.1. Fit the left hand and right hand wall to the base assembly. See fig.1.

fig.1



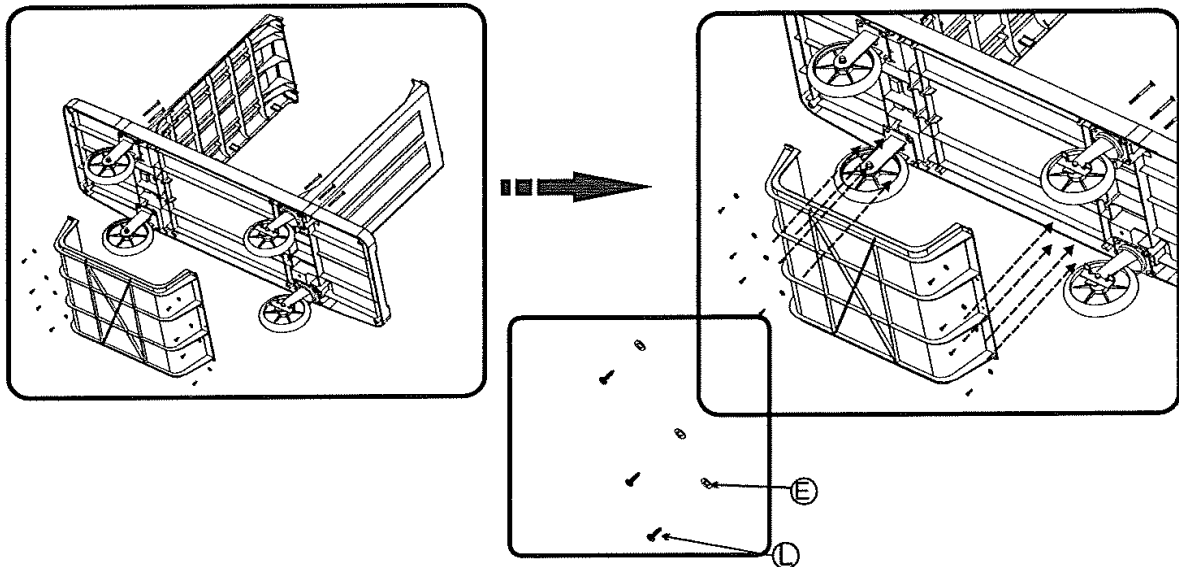
- 5.2. Use screw (B) to bolt through the walls, base and wheels, secure with washer (G) and nut (J). Make sure steerable wheels are fitted to the end opposite the steel bumper. See fig.2

fig.2



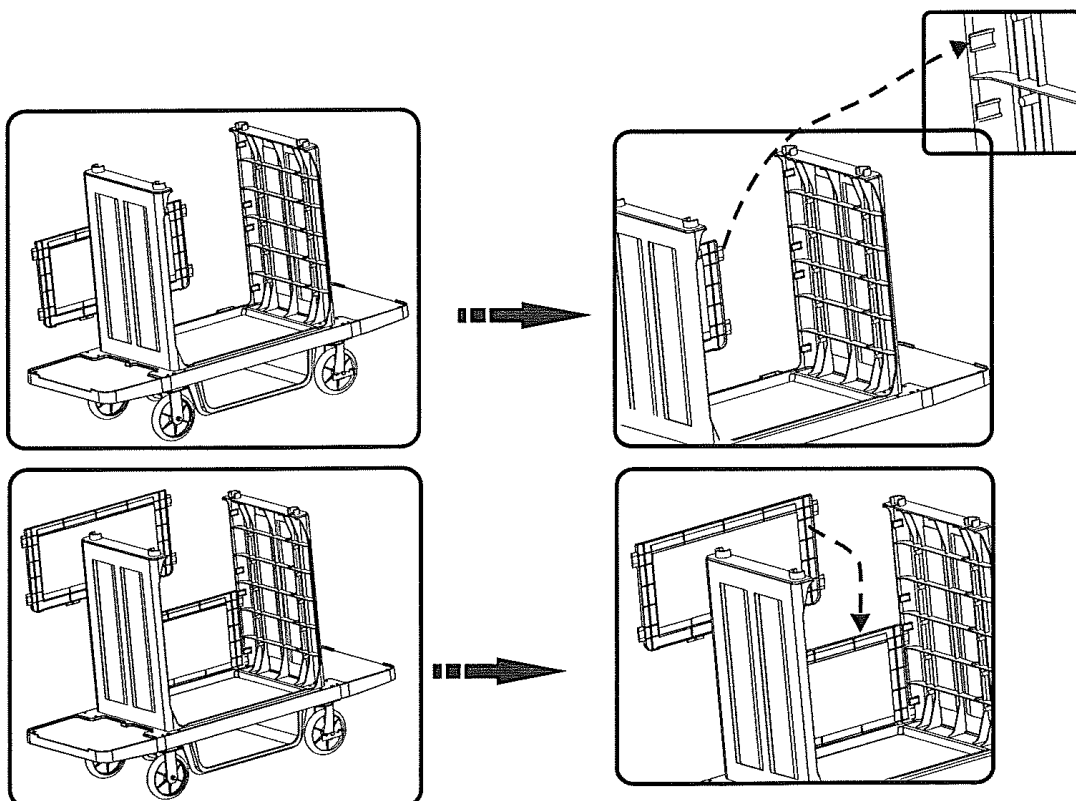
- 5.3. Screw on bottom tray using screws (L) and washers (E). See fig.3.

fig.3



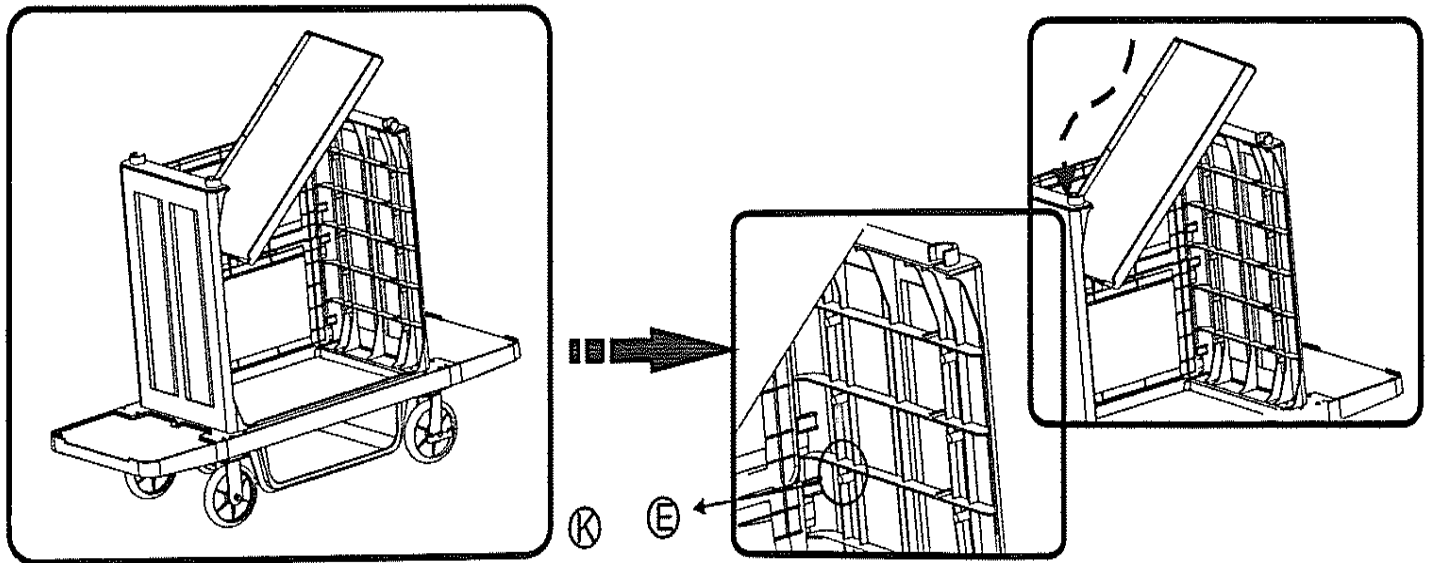
- 5.4. Assemble the lower rear wall, locate each lug into the right and left hand walls, then fit the upper rear wall, locating its lugs as before. See fig.4.

fig.4



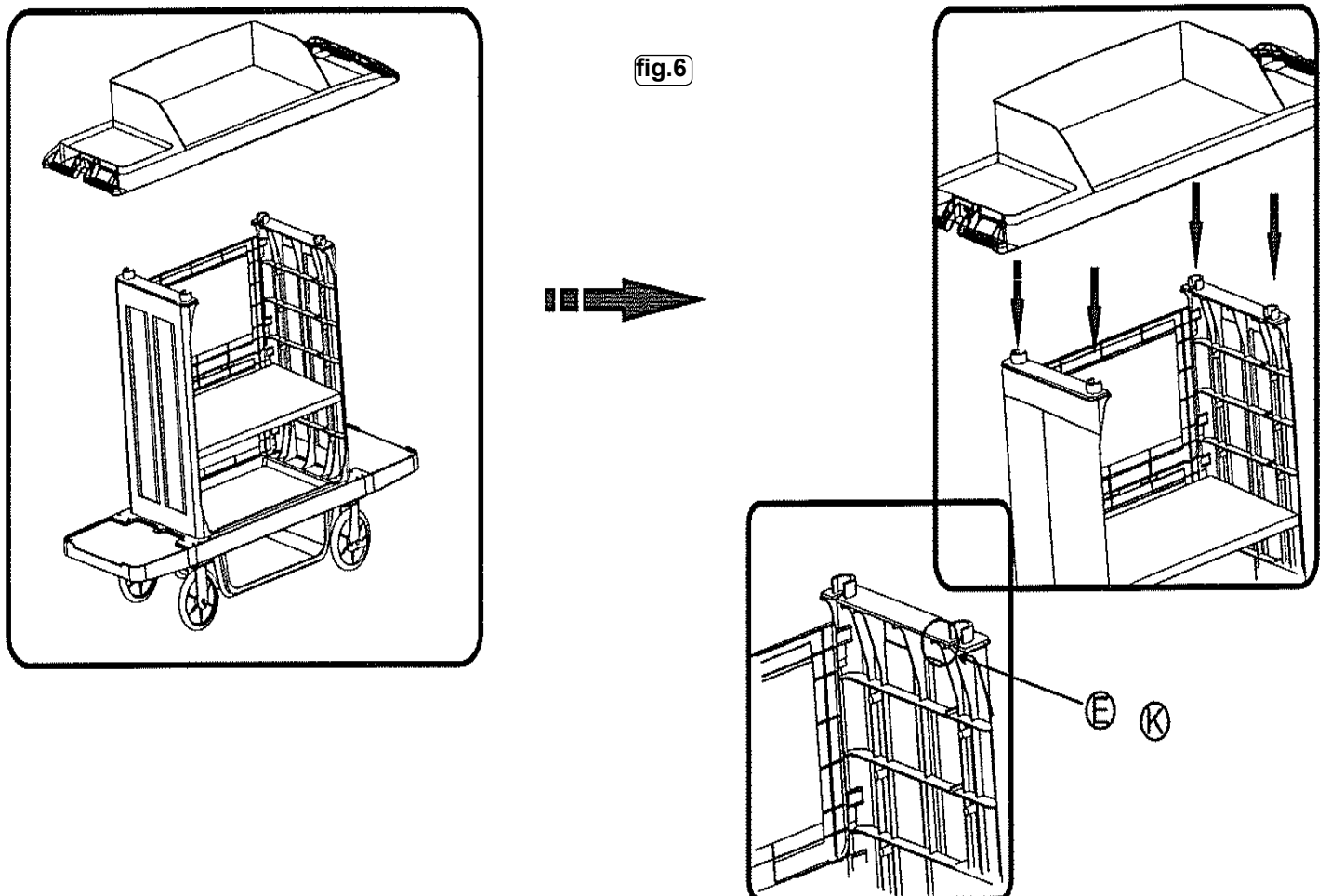
5.5. Fit the shelves by screwing them to the walls using screw (K) and washer (E). See fig.5.

fig.5



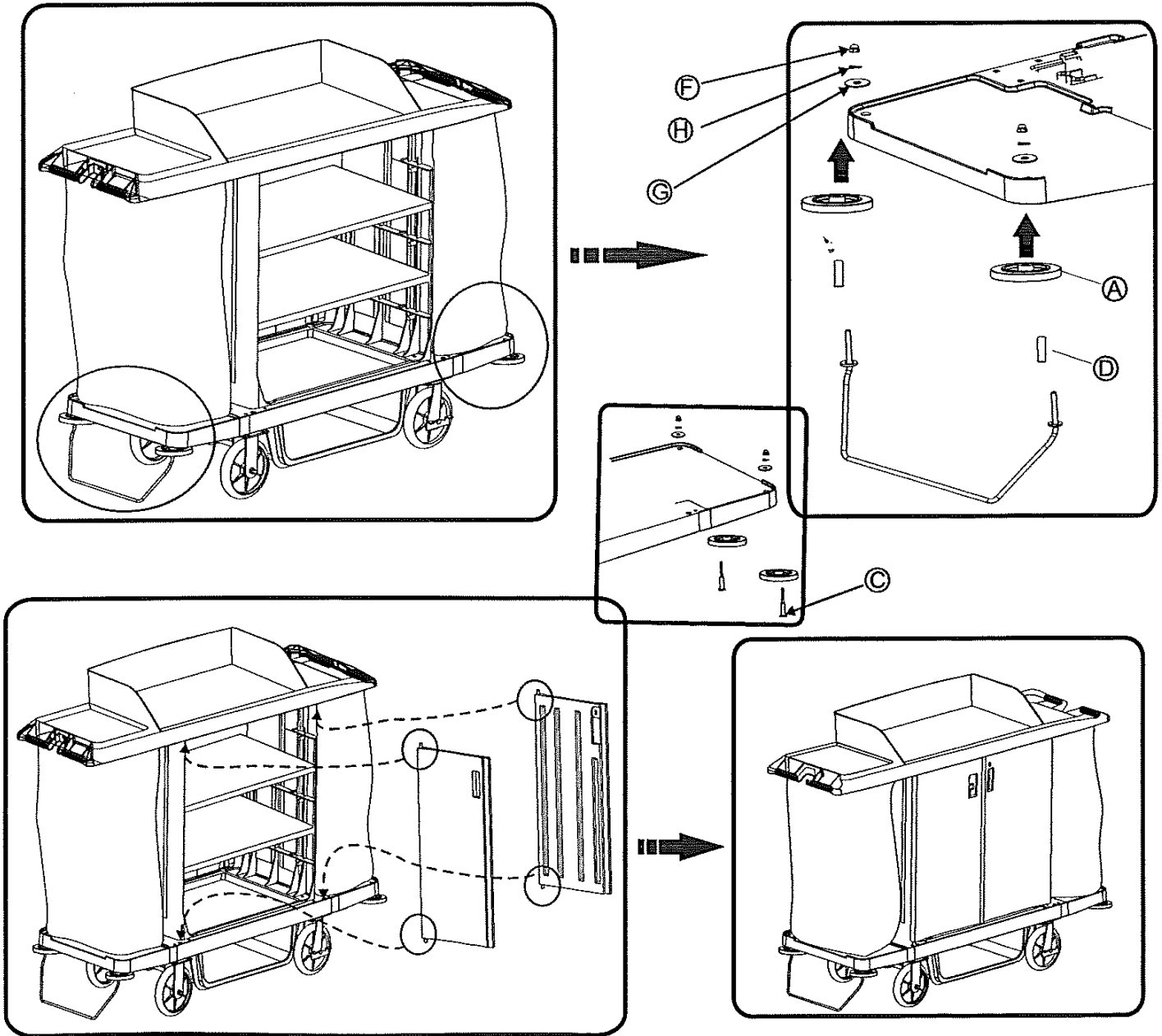
5.6. Fit the top assembly by pushing it down onto the lugs on top of the walls. Use screw (K) and washer (E). Fit the screw blanking caps. See fig.6.

fig.6



- 5.7. Fit rubber bumpers to the corners. Mount the steel bumper at the front using spacer (D), washer (G), spring washer (H) and nut (F). Rear bumpers are bolted on using screw (C) and washers as before. Fit the doors by locating the pins top and bottom into the top and base assemblies. See fig.7.

fig.7



Parts support is available for this product. To obtain a parts listing and/or diagram, please log on to www.sealey.co.uk, email sales@sealey.co.uk or telephone 01284 757500.



Environmental Protection.

Recycle unwanted materials instead of disposing of them as waste. All tools, accessories and packaging should be sorted, taken to a recycling centre and disposed of in a manner which is compatible with the environment.

NOTE: It is our policy to continually improve products and as such we reserve the right to alter data, specifications and component parts without prior notice.

IMPORTANT: No liability is accepted for incorrect use of this product.

WARRANTY: Guarantee is 12 months from purchase date, proof of which will be required for any claim.

INFORMATION: For a copy of our latest catalogue and promotions call us on 01284 757525 and leave your full name and address, including postcode.



Sole UK Distributor, Sealey Group,
Kempson Way, Suffolk Business Park,
Bury St. Edmunds, Suffolk,
IP32 7AR

01284 757500

01284 703534



www.sealey.co.uk



sales@sealey.co.uk