



DOUBLE DRAWER UNIT

MODEL NO: **AP6572D**

Thank you for purchasing a Sealey product. Manufactured to a high standard, this product will, if used according to these instructions, and properly maintained, give you years of trouble free performance.

IMPORTANT: PLEASE READ THESE INSTRUCTIONS CAREFULLY. NOTE THE SAFE OPERATIONAL REQUIREMENTS, WARNINGS & CAUTIONS. USE THE PRODUCT CORRECTLY AND WITH CARE FOR THE PURPOSE FOR WHICH IT IS INTENDED. FAILURE TO DO SO MAY CAUSE DAMAGE AND/OR PERSONAL INJURY AND WILL INVALIDATE THE WARRANTY. KEEP THESE INSTRUCTIONS SAFE FOR FUTURE USE.



Refer to
instruction
manual

1. SAFETY

- ☐ **WARNING!** Ensure Health & Safety, and local authority regulations are adhered to when assembling and using these drawers.
- ✓ Consider the space needed to pull the drawers open. Mount at a suitable height to enable them to be loaded.
- ✓ Keep the general area clean, uncluttered and ensure there is adequate lighting.
- ☐ **WARNING!** Consider the overall weight capacity of the racking with the drawers fitted and loaded.
- ✓ Keep children and unauthorised persons away from the area.
- ✗ **DO NOT** use the drawers for any purpose other than that for which they are designed.
- ✗ **DO NOT** get the drawers wet or use in damp or wet locations or areas where there is condensation.
- ✗ **DO NOT** clean with any solvents which may damage the coated surface.
- ✓ Ensure that the drawers are properly assembled before loading them.
- ✓ Load must be evenly distributed.
- ✓ Where possible the unit should be fixed to the wall with suitable fixings

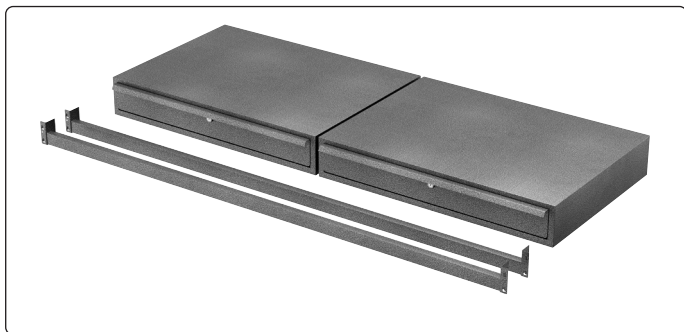
2. INTRODUCTION

Specifically designed for use with Model No. AP6572. Powder coat finish to protect against rusting. Fitted with ball bearing runners for smooth and reliable movement. Supplied assembled for instant use.

3. SPECIFICATION

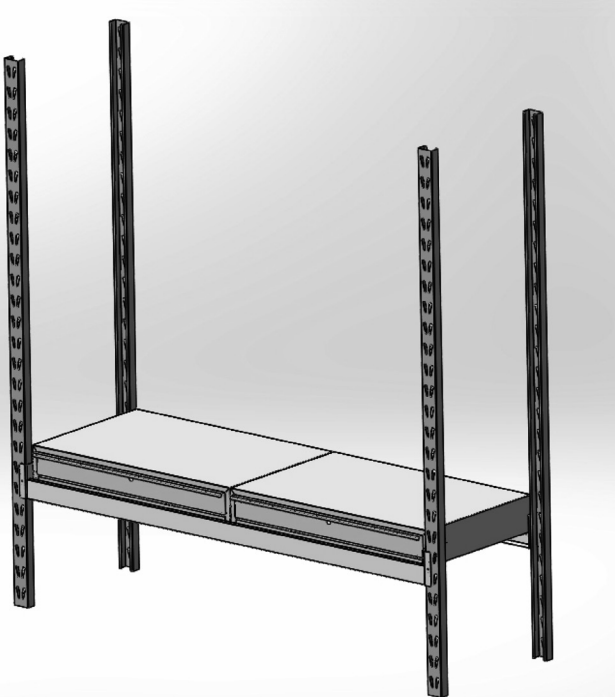
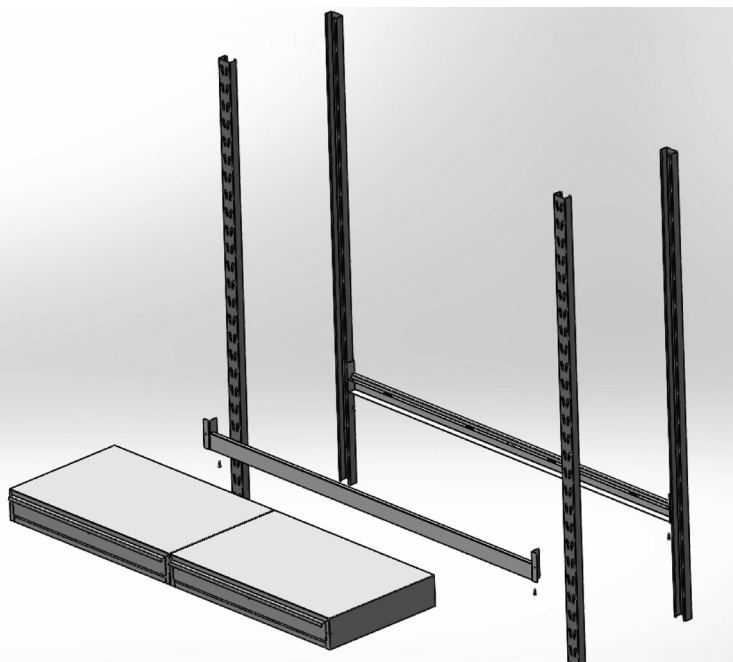
Weight:..... 19kg
Drawer Weight Capacity: 25kg
Overall Size (W x D x H): 1810 x 600 x 135mm

4. CONTENTS



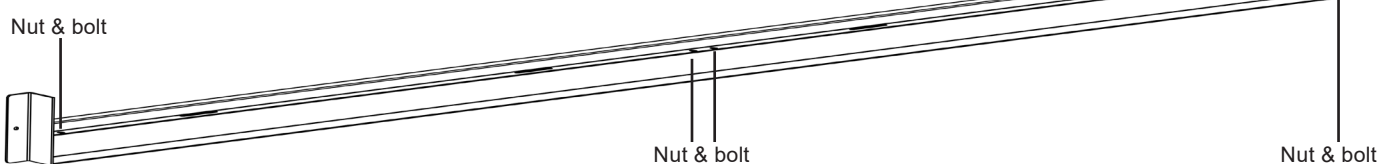
5. ASSEMBLY

Step 1: Fit bars



Step 2: Fit drawers

Step 3: Each drawer corner is bolted through the front or rear bars, with fixings provided.



5.1. Remove drawers by pulling out fully to expose long levers each side. Press lever down to remove drawer unit.



ENVIRONMENT PROTECTION

Recycle unwanted materials instead of disposing of them as waste. All tools, accessories and packaging should be sorted, taken to a recycling centre and disposed of in a manner which is compatible with the environment. When the product becomes completely unserviceable and requires disposal, drain any fluids (if applicable) into approved containers and dispose of the product and fluids according to local regulations.

Note: It is our policy to continually improve products and as such we reserve the right to alter data, specifications and component parts without prior notice.

Important: No Liability is accepted for incorrect use of this product.

Warranty: Guarantee is 12 months from purchase date, proof of which is required for any claim.



REGISTER YOUR
PURCHASE HERE

Jack Sealey Ltd t/a Sealey Group, Kempson Way, Suffolk Business Park, Bury St Edmunds, Suffolk, IP32 7AR UK
Jack Sealey (EU) Ltd t/a Sealey Group, Farney Street, Carrickmacross, Co. Monaghan, A81 PK68 Ireland
Tel: 01284 757500 • Email: sales@sealey.co.uk • Web: www.sealey.co.uk