

Thank you for purchasing a Sealey product. Manufactured to a high standard this product will, if used according to these instructions and properly maintained, give you years of trouble free performance.

IMPORTANT: PLEASE READ THESE INSTRUCTIONS CAREFULLY. NOTE THE SAFE OPERATIONAL REQUIREMENTS, WARNINGS & CAUTIONS. USE THE PRODUCT CORRECTLY AND WITH CARE FOR THE PURPOSE FOR WHICH IT IS INTENDED. FAILURE TO DO SO MAY CAUSE DAMAGE AND/OR PERSONAL INJURY AND WILL INVALIDATE THE WARRANTY. PLEASE KEEP INSTRUCTIONS SAFE FOR FUTURE USE.

1. SAFETY INSTRUCTIONS

GENERAL SAFETY

- ❑ **WARNING!** Ensure Health & Safety, local authority, and general workshop practice regulations are adhered to when using this bench.
- ✓ Locate bench in a suitable work area.
- ✓ Keep the work area clean, uncluttered and ensure there is adequate lighting.
- ❑ **WARNING!** Use bench on level and solid ground, preferably concrete.
- ✓ Keep the bench clean and tidy in accordance with good workshop practice.
- ✓ Keep children and unauthorised persons away from the work area.
- x **DO NOT** use the bench for any purpose other than that for which it is designed.
- x **DO NOT** undertake work on the bench without the workpiece being adequately secured. Use clamps or a vice (not included) to secure the workpiece - available from your Sealey dealer.
- x **DO NOT** use the bench outdoors.
- x **DO NOT** get the bench wet or use in damp or wet locations or areas where there is condensation.
- x **DO NOT** exceed the maximum load for the work surfaces, worktop and bottom shelf - 100kg each, top shelf - 20kg. Avoid heavy impacts when placing objects onto the surfaces.
- x **DO NOT** clean the bench with any solvents which may damage the surface or the protective coating on the worktop.



2. CONTENTS

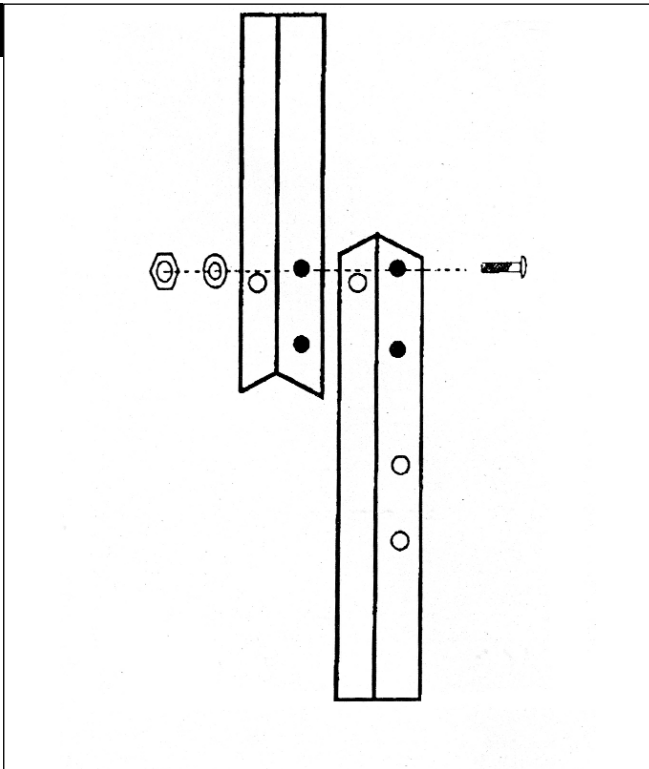
Carefully unpack the product and check the contents against the list below. Should any items be missing or damaged contact your Sealey dealer.

No.		Description Of Components	Qty
1L		Left rear post (1000 mm)	1
1R		Right rear post (1000 mm)	1
2L		Left post extension (640 mm)	1
2R		Right post extension (640 mm)	1
3		Top shelf rear beam	1
4		Top shelf front beam	1
5		Centre beams with holes (1200 mm)	2
6		Bottom beams (1200 mm)	2
7L		Top shelf left side beam (230 mm)	1
7R		Top shelf right side beam (230 mm)	1
8		Side beams (600 mm)	4
9		Drawer mounts with glide rails (602 mm)	2
10L		Left front post (900 mm)	1
10R		Right front post (900 mm)	1
11		Centre front "L" bracket	1
12		Centre rear "L" bracket	1
13		Centre drawer mount with glide rail (570 mm)	1
14F		Front plates of drawer	2
14R		Rear plates of drawer	2

No		Description Of Components	Qty
15		Side plates of drawer	4
16		Hooks	20
17		Peg board (1195 x 610 x 9 mm)	1
18		Top shelf (1198 x 230 x 12 mm)	1
19		Worktop (1200 x 590 x 18 mm)	1
20		Drawer boards (496 x 446 x 9 mm)	2
21		Bottom board (1200 x 600 x 18 mm)	1
22		Drawer handles	2
23		PVC feet protectors	4
24		M4 x 6 mm Bolt	8
25		M6 x 8 mm Bolt	16
26		M6 x 10 mm Bolt	46
27		M6 x 18 mm Bolt	26
28		Wood screws	6
29		M6 Washers	72
30		M4 Nuts	8
31		M6 Nuts	76
32		M6 lock nuts	12

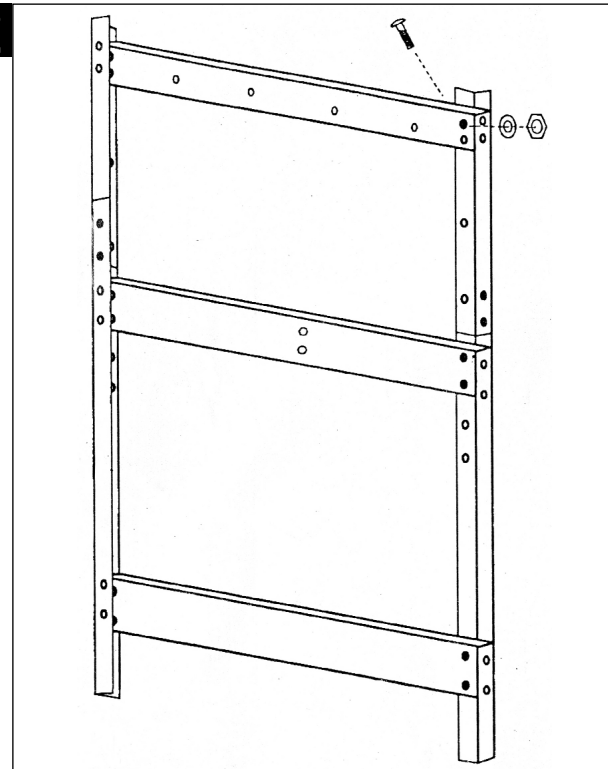
3. ASSEMBLY

1



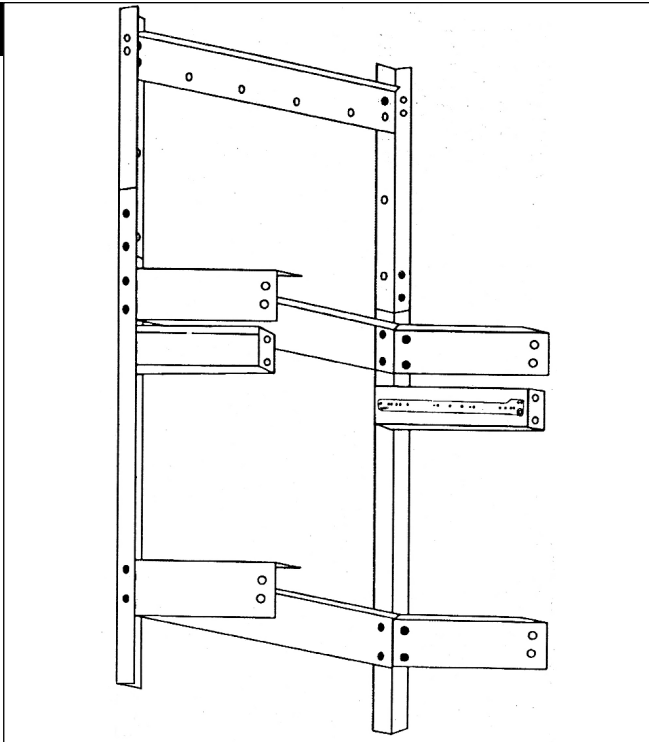
Attach left rear post (1L) to left post extension (2L) using bolts (26), washers (29) and nuts (31). Attach right rear post (1R) to right post extension (2R) using bolts (26), washers (29) and nuts (31). Please note: only use two holes on the side that has eight holes at this point.

2



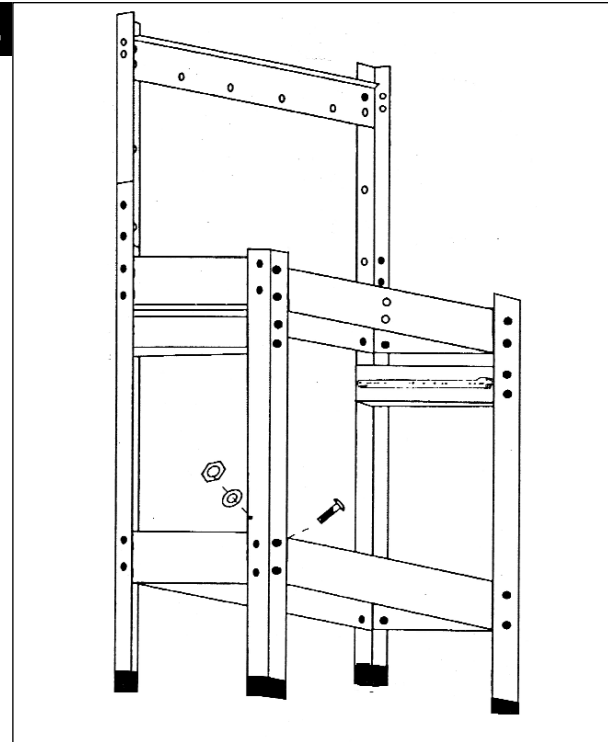
Lay the two rear legs on the floor - the sides with ten holes should be facing downwards. From top to bottom, connect the top shelf rear beam (3), the centre beam with holes (5) and a bottom beam (6) onto the rear legs using bolts (26), washers (29) and nuts (31). Please note: only use the top hole of the top shelf rear beam (3) at this stage - the bottom hole will be used when the peg board is fastened in step 7.

3

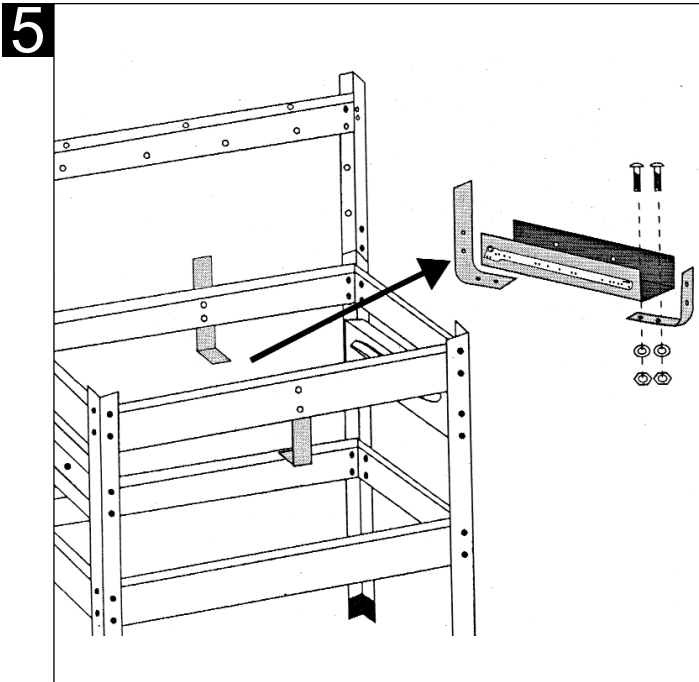


Using bolts (26), washers (29), and nuts (31), attach two side beams (8) onto the rear legs at the centre beam with holes (5) and another two side beams (8) at the bottom beam (6). Attach both drawer mounts with glide rails (9) below the two side beams (8) using bolts (27), washers (29) and nuts (32).

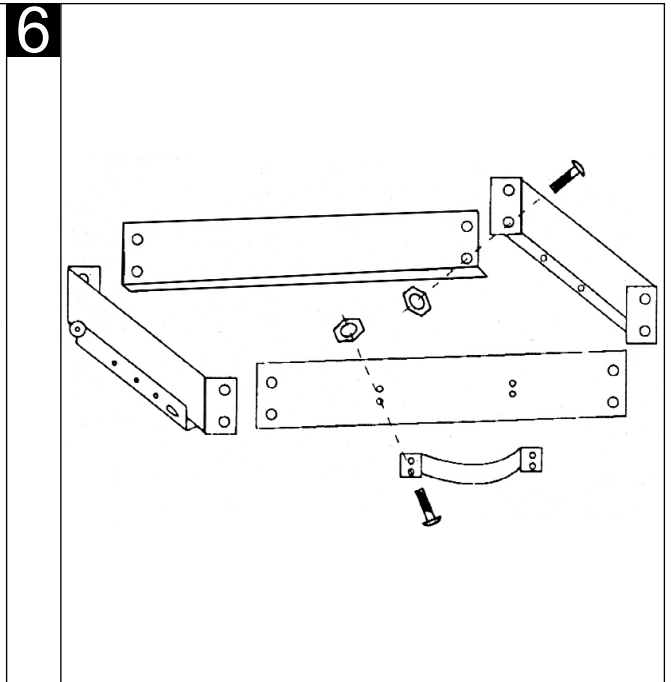
4



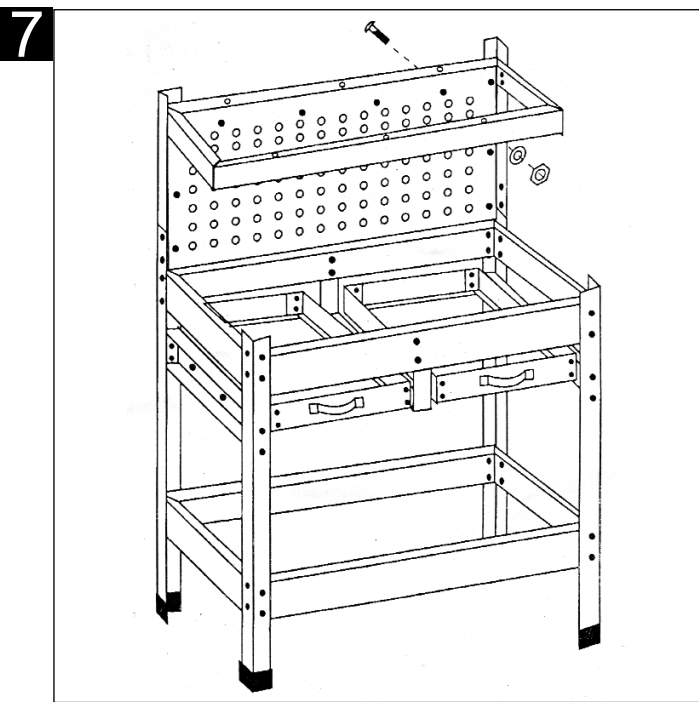
At the middle, attach the left front post (10L) to the left side beam (8) and drawer mount with glide rail (9) and centre beam with holes (5) using bolts (26 & 27), washers (29) and nuts (31 & 32). At the bottom, attach the left front post (10L) to the left side beam (8) and bottom beam (6) using bolts (26), washers (29), and nuts (31). Repeat procedure on the right side using the right front post (10R). Place the feet protectors (23) onto the four legs.



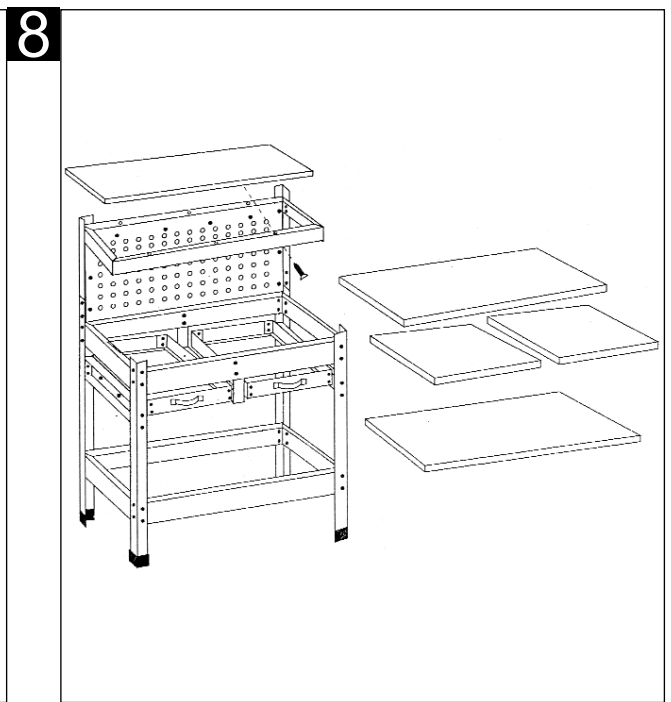
Stand the frame onto its legs. Fit the centre front L bracket (11) inside the front centre beam with holes (5) using bolts (27), washers (29) and nuts (32). Fit the centre rear L bracket (12) outside the rear centre beam with holes (5) using bolts (27), washers (29) and nuts (32). Attach the centre drawer mount with glide rails (13) onto the two L brackets (11 & 12) using bolts (27), washers (29) and nuts (31).



Attach drawer handle (22) on the front plate of drawer (14F) using bolts (24) and nuts (30). Attach the front plate of drawer (14F), side plate (15) and rear plate (14R) together using bolts (25) and nuts (31). Repeat procedure for second drawer.



Attach the peg board (17) to the bottom holes of the top shelf back beam (3) using bolts (27), washers (29) and nuts (31). Attach two top shelf side beams (7L & 7R) onto the rear legs with bolts (26), washers (29) and nuts (31). Attach the top shelf front beam (4) with bolts (26), washers (29) and nuts (31).



Place the top shelf (18), worktop (19), two drawer boards (20) and bottom board (21) into position. Use six wood screws (28) to fix top shelf in position. Position hooks (16) in peg board in desired location.

NOTE: It is our policy to continually improve products and as such we reserve the right to alter data, specifications and component parts without prior notice.

IMPORTANT: No liability is accepted for incorrect use of this product.

WARRANTY: Guarantee is 12 months from purchase date, proof of which will be required for any claim.

INFORMATION: For a copy of our catalogue and latest promotions call us on 01284 757525 and leave your full name, address and postcode.

	Sole UK Distributor Sealey Group, Bury St. Edmunds, Suffolk.	01284 757500	www.sealey.co.uk sales@sealey.co.uk
		01284 703534	

Parts support is available for this product. To obtain a parts list and diagram please log on to www.sealey.co.uk, email sales@sealey.co.uk or phone 01284 757500