

Thank you for purchasing a Sealey Jack. Manufactured to a high standard this product will, if used according to these instructions and properly maintained, give you years of trouble free performance.



IMPORTANT: READ THESE INSTRUCTIONS CAREFULLY. NOTE THE SAFE OPERATIONAL REQUIREMENTS, WARNINGS AND CAUTIONS. USE THIS JACK CORRECTLY AND WITH CARE FOR THE PURPOSE FOR WHICH IT IS INTENDED. FAILURE TO DO SO MAY CAUSE DAMAGE AND/OR PERSONAL INJURY, AND WILL INVALIDATE THE WARRANTY. RETAIN THESE INSTRUCTIONS FOR FUTURE USE.

1. SAFETY INSTRUCTIONS

- ✓ Disconnect the jack from the air supply before changing parts, servicing or performing any maintenance.
- ❑ **WARNING!** Ensure correct air pressure is maintained and not exceeded.
- ✓ Keep air hose away from heat, oil and sharp edges. Check air hose for wear before each use, and ensure that all connections are secure.
- ✓ Locate the jack in a suitable, well lit work area.
- ✓ Keep work area clean and tidy and free from unrelated materials.
- ✓ Ensure the jack is in sound condition and good working order. Take action for immediate repair or replacement of damaged parts.
Use genuine parts only. Unauthorised parts may be dangerous and will invalidate the warranty.
- ✓ Use a qualified person to maintain or repair the jack's hydraulic system.
- ✓ Use jack on level and solid ground, preferably concrete. *Avoid tarmac as jack may sink in.*
- ✓ Place wedges under wheels of vehicle (*but ensure that wheels of jack can freely move*).
- ✓ Ensure the vehicle handbrake is engaged, engine is switched off and transmission is in gear or ("Park" if an automatic).
- ✓ Ensure minimum distance of 0.5m between vehicle and static objects such as doors, walls, etc., to allow for vehicle tilting.
- ✓ Only place jack under those lifting points recommended by vehicle manufacturer. Refer to the vehicle handbook.
- ✓ Check that the jacking point is stable and centred on the jack saddle and is free from grease and oil.
- ✓ Ensure that the jacking point is visible during jacking in case of any movement.
- ✗ **DO NOT** top up hydraulic system with brake fluid. Use Sealey hydraulic jack oil only.
- ✗ **DO NOT** mix different types of oil.
- ✗ **DO NOT** use brake fluid, alcohol, glycerin, detergent, motor oil or any other fluid.
- ✗ **DO NOT** ride on the jack.
- ✓ Ensure there are no passengers in the vehicle.
- ✓ Ensure all non-essential persons keep a safe distance whilst the jack is in use.
- ✓ Ensure the jack wheels are free to move and that there are no obstructions.
- ❑ **DANGER:** *Use the jack for lifting only, NOT for supporting the lifted load.*
- ✓ Use suitable capacity axle stands under the vehicle before proceeding with any task.
- ✗ **DO NOT** allow untrained persons to operate the jack.
- ✗ **DO NOT** operate the jack if parts are missing or damaged.
- ✗ **DO NOT** exceed the rated capacity of the jack.
- ✗ **DO NOT** allow the vehicle to move while supported by the jack, or use the jack to move the vehicle.
- ✗ **DO NOT** jack the vehicle if there is a risk of spillage of fuel, battery acid, or other dangerous substances.
- ✗ **DO NOT** work under the vehicle until adequate axle stands have been correctly positioned.
- ✗ **DO NOT** use the jack for purposes other than that for which it is intended.
- ✗ **DO NOT** adjust the safety overload valve.
- ✗ **DO NOT** yank the hose from the air supply, and **DO NOT** direct air from the air hose at yourself or others.
- ✗ **DO NOT** use the jack if you believe it to have been subjected to abnormal load or shock. Inspect and take appropriate action.
- ✓ Ensure that there are no persons or obstructions beneath the vehicle before lowering.
- ✓ When not in use, disconnect jack from the air supply and store, fully lowered, in a safe, dry, childproof area.
- ❑ **WARNING!** *Turn off air supply and de-pressurise the control nozzle before removing the pump unit. Failure to comply with this instruction may damage the unit and will invalidate your warranty.*
- ❑ **WARNING!** The warnings, cautions and instructions referred to in this manual cannot cover all possible conditions and situations that may occur. It must be understood that common sense and caution are factors which cannot be built into this product, but must be applied by the operator.



2. INTRODUCTION AND SPECIFICATIONS

Heavy duty air-hydraulic unit with heavy-duty chassis design. Can be used by manual pumping or by air driven motor/pump. Integral American cog-type release mechanism and long two-piece handle. Heavy-duty castors and extra-large saddle design ease positioning under vehicle.
 Fitted with safety overload valve and pump-through valve to prevent handle locking at maximum ram extension.

2.3 SPECIFICATIONS

Model No:	AJ2250
Capacity:	2.25tonne
Minimum Saddle Height:	140mm
Maximum Saddle Height:	494mm
Maximum Chassis Height:	190mm
Chassis Length:	740mm
Weight:	39kg

Min / Max Air Pressure	80 / 120psi
Handle Length	1090mm

3. ASSEMBLY / PRE-USE CHECKS

3.1 Assembly

- 3.1.1 Insert the upper handle (Fig.1.1) into the lower handle (Fig.1.2), and secure using Bolt M6X35 (Fig.1.3). Insert the bottom of the handle assembly into the handle socket (Fig.1.4) and be sure to tighten the handle socket screw (Fig.1.5).

3.2 Pre-use Check

- 3.2.1 Prior to using the jack, check that there are no damaged, loose or missing parts. Ensure that there are no leaks in the hydraulic system.

3.3 Oil Level Check

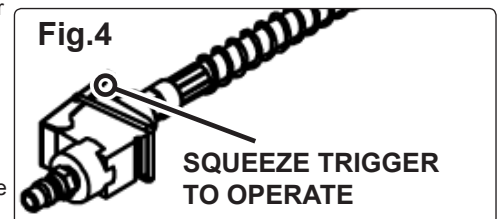
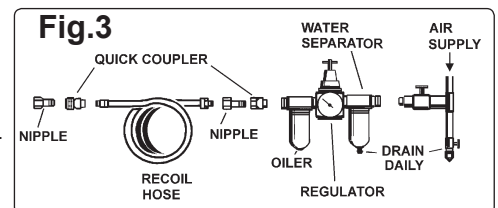
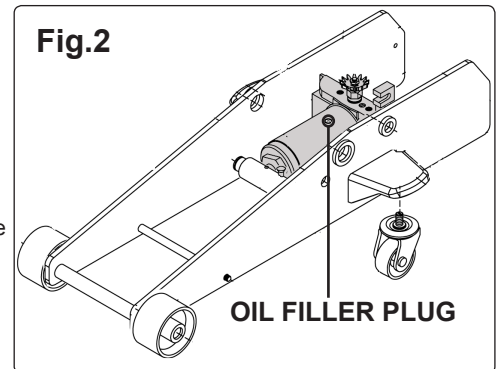
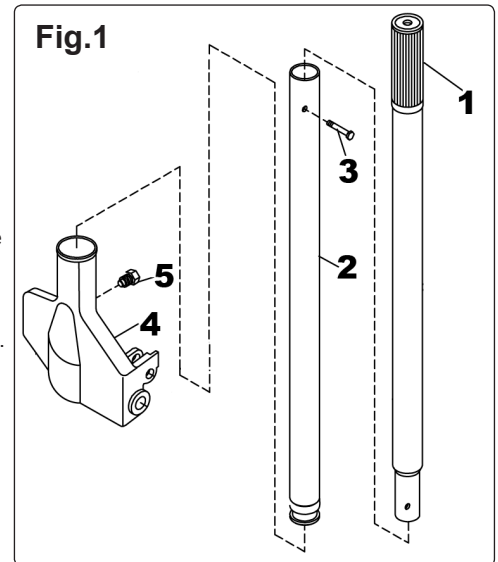
- 3.3.1 With the jack body in the upright position and the ram completely retracted, open the release valve by turning the handle counter-clockwise, then lower the handle to provide access to the filler plug on the ram body (Fig.2).
- 3.3.2 Remove the plug using a cross headed screwdriver and ensure that the oil is just below the level of the filler plug. If necessary, replenish with Sealey hydraulic jack oil. **DO NOT OVERFILL.**

3.4 Purging the Hydraulic System

- 3.4.1 **IMPORTANT:** Before using the jack for the first time, purge the hydraulic system in order to eliminate any air, that may have accumulated in the system during transit, as follows:
- 3.4.2 Open the jack release valve by turning handle anti-clockwise.
- 3.4.3 Operate the handle by pumping it 15 to 20 times in order to purge any air from the system. Close release valve.

3.5 Air Supply

- WARNING!** Ensure that the air supply does not exceed 120psi while operating the jack. Too high an air pressure and/or unclean air will shorten the life of the jack, through excessive wear. Unclean air and high air pressure could also be dangerous, causing possible damage and personal injury. For correct air setup see Fig.3.
- 3.5.1 Keep the air hose between the compressor and the air jack as short as possible and install an air filter and oiler. Refer to Fig.3.
- 3.5.2 Drain the air tank daily, as water in the air line will damage the jack.
- 3.5.3 Clean the air filter and screen weekly.
- 3.5.4 To compensate for unusually long air hoses - over 8 metres - line pressure should be increased.
- 3.5.5 The minimum hose diameter should be 3/8" I.D. and fittings must have the same inside dimensions.
- 3.5.6 Keep the hoses clear of heat, oil and sharp edges. Check the hoses for wear and ensure that all connections are secure.
- 3.5.7 With the jack release valve open, connect the air control valve to the air supply.



4. OPERATION

4.1 Lifting a Load Using Air Control

- WARNING!** Set the vehicle parking brake and chock vehicles wheels prior to jacking.
- WARNING!** Ensure you have read and understood the safety instructions in Chapter 1 before commencing work.
- 4.1.1 Close the jack release valve by turning the handle fully clockwise.
- 4.1.2 Position the jack under the vehicle manufacturer's recommended jacking point. Refer to the vehicle handbook.
- 4.1.3 Raise the saddle to the jacking point by operating the air valve (Fig.4).
- 4.1.4 Ensure that the load is centred on the jack saddle.
- 4.1.5 Operate the jack until the load has been raised to the required height.
- 4.1.6 Place axle stands correctly in position to support the load and ensure that Chapter 1 safety instructions are strictly applied before performing any task.
- WARNING!** The jack is a lifting device only and must not be used to support the load. Use correctly rated axle stands to support the load.

4.2 Lowering a Load

- 4.2.1 Raise the jack and ensure there are no personnel or obstructions beneath the vehicle stands and lowering the jack.
- 4.2.2 Open the release valve by slowly turning the handle anti-clockwise.
- 4.2.3 Carefully control the rate of descent to avoid damaging the vehicle.
- 4.2.4 Remove the jack from under the vehicle. If you have finished using the jack, turn the air supply off and disconnect the jack from the air line.

before removing the axle

4.3 Lifting a Load Using Handle

- WARNING!** Set the vehicle parking brake and chock vehicles wheels prior to jacking.
- WARNING!** Ensure you have read and understood the safety instructions in Chapter 1 before commencing work.

4.3.1 Close the jack release valve.

4.3.2 Position the jack under the vehicle manufacturer's recommended jacking point. Refer to the vehicle handbook.

4.3.3 Raise the saddle to the jacking point by pumping the handle.

4.3.4 Ensure that the load is centred on the jack saddle.

4.3.5 Operate the jack until the load has been raised to the required height.

4.3.6 Place axle stands correctly in position to support the load and ensure that Chapter 1 safety instructions are strictly applied before performing any task.

WARNING! The jack is a lifting device only and must not be used to support the load. Use correctly rated axle stands to support the load.

4.4 Lowering a Load

4.4.1 Raise the jack and ensure there are no personnel or obstructions beneath the vehicle before removing the axle stands and lowering the jack.

4.4.2 Open the release valve by slowly turning the handle anti-clockwise.

4.4.3 Carefully control the rate of descent to avoid damaging the load.

4.4.4 Remove the jack from under the vehicle.

5. MAINTENANCE

▲ IMPORTANT: Only fully qualified personnel should attempt maintenance or repair.

WARNING! Disconnect the jack from the air supply before performing any servicing or maintenance.

5.1 When the jack is not in use, the ram is to be fully retracted.

5.2 Keep the jack clean and apply lubricant to all pivot points at 3-monthly intervals. If the jack is used in a dusty environment, lubricant should be applied more frequently.

5.3 Check the oil level at regular intervals. Refer to Section 3.3.

WARNING! DO NOT use brake fluid, or any fluid other than Sealey hydraulic jack fluid as this may cause serious damage to the jack and will invalidate the warranty!

5.4 Check the ram periodically for signs of rust or corrosion. If rust or corrosion is present, clean the exposed area with a clean, oiled cloth.

▲ IMPORTANT: NO RESPONSIBILITY IS ACCEPTED FOR INCORRECT USE OF THE JACK.

NOTE: Hydraulic products are only repaired by local service agents. We have service/repair agents in all parts of the UK.

DO NOT return the jack to us. Please telephone 01284 757500 to obtain the address and 'phone number of your local agent. If the jack is under guarantee, please contact your local dealer.

De-commissioning the Jack

Should the Jack become completely unserviceable and require disposal, draw off the oil into an approved container and dispose of the jack and the oil according to local regulations.

6. TROUBLE SHOOTING

PROBLEM	POSSIBLE CAUSE	REMEDY
The jack cannot lift the load.	<ol style="list-style-type: none"> 1. Release valve not tightly closed. 2. Air in hydraulic system. 3. Low oil level. 4. Power unit faulty. 5. Low pressure air supply. 	<ol style="list-style-type: none"> 1. Check the release valve is not stuck. 2. Bleed the hydraulic system. 3. Add more oil. 4. Contact Service Agent. 5. Change to a suitable air supply.
Jack lifts the load but cannot hold it.	<ol style="list-style-type: none"> 1. Low oil level. 2. Power unit malfunctioning. 	<ol style="list-style-type: none"> 1. Add more oil. 2. Contact Service Agent.
Jack cannot completely lower.	<ol style="list-style-type: none"> 1. Air in hydraulic system. 2. Low oil level. 3. Power unit malfunctioning. 	<ol style="list-style-type: none"> 1. Bleed the hydraulic system. 2. Add more oil. 3. Contact Service Agent.
Jack cannot completely lift a load.	<ol style="list-style-type: none"> 1. Air in hydraulic system. 2. Low oil level. 3. Power unit malfunctioning. 	<ol style="list-style-type: none"> 1. Bleed the hydraulic system. 2. Add more oil. 3. Contact Service Agent.
Jack cannot reach maximum height.	<ol style="list-style-type: none"> 1. Air in hydraulic system. 2. Low oil level. 	<ol style="list-style-type: none"> 1. Bleed the hydraulic system. 2. Add more oil.

NOTE: It is our policy to continually improve products and as such we reserve the right to alter data, specifications and component parts without prior notice.

IMPORTANT: No liability is accepted for incorrect use of this product.

WARRANTY: Guarantee is 12 months from purchase date, proof of which will be required for any claim.

INFORMATION: For a copy of our latest catalogue and promotions call us on 01284 757525 and leave your full name and address, including postcode.



Sole UK Distributor, Sealey Group,
Kempson Way, Suffolk Business Park,
Bury St. Edmunds, Suffolk,
IP32 7AR

01284 757500

www.sealey.co.uk

01284 703534

sales@sealey.co.uk