

AB80.V5

AB100.V5

AB160.V5

AB200.V2

AB602.V4

AB801.V5

Thank you for purchasing a Sealey product. Manufactured to a high standard this product will, if used according to these instructions and properly maintained, give you years of trouble free performance.



IMPORTANT: PLEASE READ THESE INSTRUCTIONS CAREFULLY. NOTE THE SAFE OPERATIONAL REQUIREMENTS, WARNINGS AND CAUTIONS. USE THE PRODUCT CORRECTLY AND WITH CARE FOR THE PURPOSE FOR WHICH IT IS INTENDED. FAILURE TO DO SO MAY CAUSE DAMAGE AND/OR PERSONAL INJURY AND WILL INVALIDATE THE WARRANTY. PLEASE KEEP INSTRUCTIONS SAFE FOR FUTURE USE.

1. SAFETY INSTRUCTIONS

1.1. ELECTRICAL SAFETY

WARNING! It is the responsibility of the owner and the operator to read, understand and comply with the following: You must check all electrical products, before use, to ensure that they are safe. You must inspect power cables, plugs, sockets and any other connectors for wear or damage. You must ensure that the risk of electric shock is minimised by the installation of appropriate safety devices. A Residual Current Circuit Breaker (RCCB) should be incorporated in the main distribution board. We also recommend that a Residual Current Device (RCD) is used. It is particularly important to use an RCD with portable products that are plugged into a supply which is not protected by an RCCB. If in any doubt consult a qualified electrician. You may obtain a Residual Current Device by contacting your Sealey dealer. **You must** also read and understand the following instructions concerning electrical safety.

1.1.1. The **Electricity at Work Act 1989** requires all portable electrical appliances, if used on business premises, to be tested by a qualified electrician, using a Portable Appliance Tester (PAT), at least once a year.

1.1.2. The **Health & Safety at Work Act 1974** makes owners of electrical appliances responsible for the safe condition of those appliances and the safety of the appliance operators. **If in any doubt about electrical safety, contact a qualified electrician.**

1.1.3. Ensure that the insulation on all cables and on the appliance is safe before connecting it to the power supply. See 1.1.1. and 1.1.2. and use a Portable Appliance Tester.

1.1.4. Ensure that cables are always protected against short circuit and overload.

1.1.5. Regularly inspect power supply cables and plugs for wear or damage and check all connections to ensure that none are loose.

1.1.6. **Important:** Ensure that the voltage marked on the appliance matches the power supply to be used and that the plug is fitted with the correct fuse - see fuse rating at right.

1.1.7. **DO NOT** pull or carry the appliance by the power cable.

1.1.8. **DO NOT** pull the plug from the socket by the cable.

1.1.9. **DO NOT** use worn or damaged cables, plugs or connectors. Immediately have any faulty item repaired or replaced by a qualified electrician. When an ASTA/BS approved UK 3 pin plug is damaged, cut the cable just above the plug and **dispose of the plug safely.** Fit a new plug according to the following instructions (UK only).

a) **Connect the GREEN/YELLOW earth wire to the earth terminal 'E'.**

b) **Connect the BROWN live wire to the live terminal 'L'.**

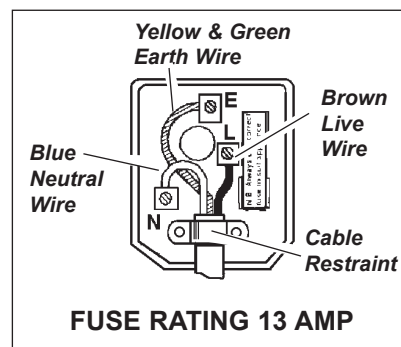
c) **Connect the BLUE neutral wire to the neutral terminal 'N'.**

d) After wiring, check that there are no bare wires, that all wires have been correctly connected, that the cable outer insulation extends beyond the cable restraint and that the restraint is tight.

Double insulated products, which are always marked with this symbol , are fitted with live (brown) and neutral (blue) wires only.

To rewire, connect the wires as indicated above - **DO NOT** connect either wire to the earth terminal.

1.1.10. If an extension reel is used it should be fully unwound before connection. A reel with an RCD fitted is preferred since any appliance plugged into it will be protected. The cable core section is important and should be at least 1.5mm², but to be absolutely sure that the capacity of the reel is suitable for this product and for others which may be used in the other output sockets, we recommend the use of 2.5mm² section cable.



1.2. GENERAL SAFETY

✓ Check that the heater is in sound condition and good working order. *Take immediate action to repair or replace damaged parts.*

✓ Use recommended parts only. *Unapproved parts may be dangerous and will invalidate the warranty.*

✓ Only use paraffin or diesel to fuel your heater, in accordance with instructions contained in this manual.

WARNING! Only use heater in well ventilated areas. Ensure continuous ventilation is provided to the heater operating area. Allow at least 0.03ft² opening/1000Btu/h output (0.01m²/kW). This should be divided equally between floor and high level. Ventilation must be to the outside of the premises in which the heater is to be operated. If your operating area has no direct access to clean fresh air we recommend that you run a large gauge duct from the outside of the building to the back of the heater in order to provide a clean air intake. For more details see Section 4.

✓ Keep the heater a minimum of 3 metres from any combustible materials (i.e. wooden items, cloth, plastics, paper, etc).

✓ Maintain a minimum distance of 50cm from non-combustible materials (i.e. brick, steel, concrete, etc).

✓ Check the colour of the dome at the heater outlet to ensure that optimum heat output is maintained. (see Section 5.3).

WARNING! DO NOT use the heater near flammable material, liquids, solids, gases or compressed gas cylinders and the like.

DO NOT use the heater in closed rooms, living areas, basements or below ground level.

DO NOT allow untrained persons to operate the heater and **DO NOT** operate the heater without the cover.

DO NOT use an external fuel tank. Only use that which is part of the heater.

DO NOT stand or place **any** object less than 3 metres from the heater output.

DO NOT obstruct the air inlet and outlet sections of the heater.

DO NOT operate the heater when you are tired or under the influence of alcohol, drugs or intoxicating medication.

DO NOT over-fill the fuel container. Wipe up any spilt fuel immediately.

DO NOT touch the heater outlet or dome when first switched off as these are very hot and will take time to cool.

✓ Ensure that the heater is correctly turned off when not in use and store in a safe, dry area, out of reach of children.

DO NOT leave the heater unattended when in use. Switch the heater off and unplug from the mains before leaving work area.

DO NOT unplug the AB200 to switch it off. Use the ON/OFF switch. This will allow the aftercooling fan to run for 2 mins after shutdown.

2. INTRODUCTION & SPECIFICATIONS

NOTE: Your heater is set to be used with paraffin, to adjust for diesel use refer to Section 4.

The Sealey AB heaters are made to DIN30697 standard and built to survive the rigor of bodyshops, workshops and large work areas (these heaters are not for domestic use). A sensor will automatically cut off the motor and fuel supply if the flame is inadvertently extinguished. The heater can be fuelled with paraffin or (with minor adjustments to air pressure systems) diesel. Diesel, however, will not burn as cleanly as paraffin. **DO NOT** use any other type of fuel. A specially designed burner head in a stainless steel combustion chamber ensures a thorough burn of fuel which results in economical use and maximum heating effect. The cast alloy compressor unit is protected by a large filter element and the fuel line is fitted with an in-line filter to ensure trouble free operation. The AB heaters will operate for between 6 and 18 hours on a single tank of fuel.

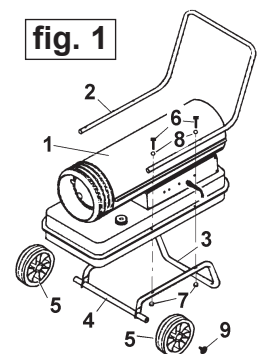
2.1. Specifications

Model:	AB602.V4	AB200.V2	AB801.V5	AB80.V5	AB100.V5	AB160.V5
Output (Btu/h/kW):	51,250/15.1	210,865/61.3	80,000/23.5	80,000/23.5	100,000/29.4	160,000/47
Tank capacity :	11ltr	46LTR	11ltr	21ltr	30ltr	46ltr
Fuel oil:	Paraffin/Diesel	Paraffin/Diesel	Paraffin/Diesel	Paraffin/Diesel	Paraffin/Diesel	Paraffin/Diesel
Electrical input:	230V 5A	230V 3A	230V 5A	230V 5A	230V 5A	230V 5A
Approx. hours operation per filling:	14	10	6	11	13	13
Transport wheels:	Not fitted	Standard	Not fitted	Standard	Standard	Standard
Air flow (cfm):	206	770	300	300	412	770
Automatic shut-off:	Yes	Yes	Yes	Yes	Yes	Yes
Heated volume (ft ³):	12,790	48,900	20,000	20,000	25,000	40,000
Heated volume (m ³):	375	1385	585	585	700	1120
Net weight (kg):	16	45	20	26	31	41
Quality standard:	CE Norm	CE Norm	CE Norm	CE Norm	CE Norm	CE Norm

3. ASSEMBLY

Unpack the heater and check contents. Should there be any damaged or missing parts contact your supplier immediately. If your model is supplied with wheels refer to fig.1 for assembly as follows:

- 3.1. Slide axle (4) through wheel support frame (3).
- 3.2. Install wheels (5) then cap nuts (9) on axle ends and tap lightly into place.
- 3.3. Place heater on wheel support frame and line up holes on the fuel tank flange with holes on the wheel support frame.
- 3.4. Place handle on fuel tank flange and line up with the wheel support frame fixing holes. Insert bolts (6) through the fuel tank flange and both frames and secure finger tight only with nuts (7) and washers (8).
- 3.5. When assembly is complete, securely tighten all nuts.



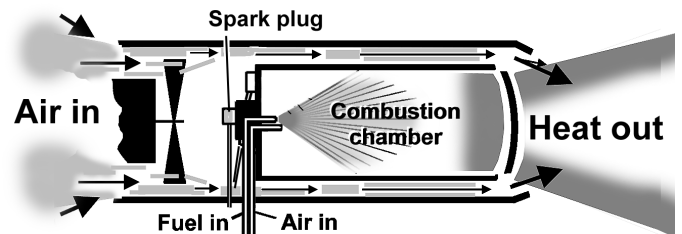
4. OPERATING CONDITIONS

4.1. Principles of heat generation

When the heater is switched on the air compressor draws in air, pressurises it and passes it through an air line to the burner head nozzle. The air flow causes fuel to be drawn from the tank. The fuel and air mix is then sprayed into the combustion chamber.

The mixture is automatically ignited by the spark plug and a high temperature heat stream is generated in the combustion chamber. Air is drawn into the unit by a fan and is pushed around the cool chamber situated between combustion chamber and outer casing. This fast flowing air sucks the heat stream out of the combustion chamber, providing the required heat. Heat will cause the steel dome in the heater outlet to glow. The intensity of this glow is an indication of the output. If the system malfunctions a "flame-out" control will operate and automatically cut off the motor and fuel supply. Should this happen, switch off machine and unplug from mains supply.

Refer to trouble shooting chart in Section 7 and/or return unit to supplier for maintenance.



4.2. Fuel

The AB series will operate with two types of fuel, paraffin or diesel. Before operating the heater you must determine which type of fuel you will use in order to effect the correct heater settings. The following information must be understood before use.

4.2.1. Paraffin

The heat output is governed by the compressor - the higher the air pressure the hotter the flame. The AB series heaters have had the air pressure pre-set at the factory to accommodate paraffin (because it will burn more cleanly than diesel). When the heater is new however (or when the unit has been returned from service) the settings may require minor adjustment to accommodate reductions in air flow through a new air filter. Incorrect settings will cause flame problems and may emit fuel odours resulting in damage to the unit and an uncomfortable working environment. Paraffin will sometimes cause condensation. If the unit is stored unused (i.e. during the summer) such condensation will cause the fuel tank to corrode and, when next used, the flame to pulsate due to water in the tank. To overcome the problem, paraffin must be drained off and replaced if the heater is to be unused for a long periods.

4.2.2. Diesel

AB series heaters are pre-set at the factory to accommodate paraffin. If diesel is used without changing the setting the air pressure will be greater than is required resulting in an excessively hot flame which will damage the unit. Before using diesel the system must be adjusted by decreasing the air pressure to the point at which the diesel will burn to generate the correct heat output. (See 5.2).

WARNING! Failure to adjust to the correct air pressure will damage the combustion chamber and invalidate your warranty.

The spark plug will require cleaning every 50 hours of use in order to remove carbon deposits (see Maintenance Section 6). We recommend cleaning the plug at least once every standard working week if less than 50 hours.

- 4.3. When used in the construction or agricultural industries ensure that the safety regulations in force are adhered to with regard to distances from flammable materials and any other specified substances. Refer to General Safety in Section 1 for recommended clearances.

- ❑ **WARNING!** Air contaminants taken into the heater may affect the heat output, damage the unit and may cause health problems. Example: Bodyshop filler dust will damage the motor bearing, clog the filter and compressor and contaminate the combustion chamber causing flame flutter and health hazards. If contaminants are present the heater must be supplied with ducted clean air, see 4.4. Please note that any parts damaged by filler dust will not be covered by warranty. Additionally, a cleaning charge will be made for any heaters damaged by filler dust.

4.4. **VENTILATION.** (Minimum recommended openings for fresh air intake.)

Model: AB602.V4 = 0.15m² AB200.V2 = 0.6m² AB801.V5 = 0.23m² AB80.V5 = 0.23m² AB100.V5 = 0.29m² AB160.V5 = 0.47m²

- ❑ **WARNING!** Only use the heater in well ventilated areas. Careful consideration must be given to the placing of the heater to provide safe and comfortable heating. Ensure continuous ventilation is provided to the heater operating area. Allow at least 0.01m²/kW heater output. This should be divided equally between floor and high level. A ventilation opening must run to the outside of the premises in which the heater is to be operated. If the operating area has no direct access to clean fresh air we recommend you run a large gauge duct from the outside of the building to the inlet of the heater in order to provide a clean air intake. Ensure that the duct is laid so as to not compromise safety.

5. OPERATING INSTRUCTIONS

5.1. **Running the heater on paraffin.** The heater has been factory pre-set for paraffin and will produce the correct heat output when first used from new. You should run the heater at the pre-set output in order to ensure the long life, safety and reliability of the unit. Minor adjustments to heat output may be required during the first 60 hours of use. These adjustments are made to the air pressure valve (see fig.5.A). Once the unit has completed the running-in period it should not be necessary to alter the air pressure again until a new air filter is fitted or a change of fuel takes place.

- 5.1.1. Ensure that the unit is unplugged from the mains supply.
- 5.1.2. Fill the fuel tank with paraffin. **Do not** over-fill. Wipe away any spillage before use.
- 5.1.3. Plug into the main power supply and switch on the heater. The heater will ignite and as the heat builds to maximum (approximately two minutes) the dome at the output end of the heater will begin to glow. Observe the colour of the dome to check that the heater is producing the correct heat output, as indicated below. Stand at least 3 metres away from heater to make observations.

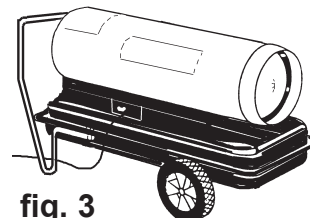


fig. 3

- a) NORMAL CHERRY RED IN THE MIDDLE PROGRESSING TO AN ORANGE ON THE OUTSIDE RIM OF THE DOME (see fig.4).
- b) **TOO HOT** ORANGE ALL OVER. **WARNING!** This output will damage the combustion chamber and invalidate warranty.
- c) **TOO COOL** ANY DULL GLOW PROGRESSING UPWARD TO CHERRY RED ALL OVER. (Heater odour emissions will also indicate incorrect settings.)

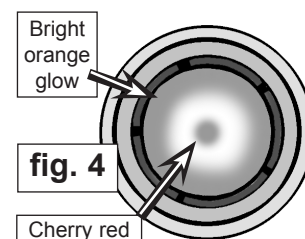


fig. 4

- 5.1.4. To adjust the heat output, locate the air pressure valve (fig.5.A), which is in the centre portion of the air inlet grille at the back of the unit. Hold the adjusting screw steady with a screwdriver and loosen the locking nut. Turn the screw clockwise to increase the air pressure and thus increase the heat output. Turn the screw anticlockwise to decrease the air pressure and thus decrease the heat output. Make small adjustments only and give the heater time to stabilise before observing the effect on the colour of the dome. When the colour is normal as described above in section 5.1.3.(a) tighten the locking nut.
- 5.1.5. Turn off the heater at the rocker switch and unplug from the mains supply (**except for the AB200, see section 5.2.6 below**). **DO NOT** touch the heater outlet as this will remain hot for some time. Store in a dry, safe, childproof area.

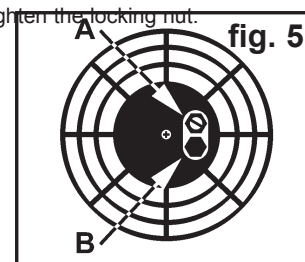


fig. 5

5.2. **Running the heater on diesel.** The heater has been pre-set in the factory for the use of paraffin. Because diesel burns hotter than paraffin it will be necessary to **decrease** the air pressure to give out the correct heat output. **Failure to make this adjustment will damage the combustion chamber and invalidate your warranty.**

- 5.2.1. Ensure that the unit is unplugged from the mains supply.
- 5.2.2. Fill the fuel tank with diesel. **Do not** over-fill and wipe away any spillage before use.
- 5.2.3. Plug back into the mains supply and start the heater, run for two minutes before making any adjustment to the air pressure valve. Locate the valve (fig.5.A) which is in the centre portion of the air inlet grille at the back of the unit. Hold the adjusting screw steady with a screwdriver and loosen the locking nut. Turn screw half a turn anticlockwise to decrease the air pressure, and thus decrease the heat output, to compensate for the hotter burning diesel fuel. Retighten the locking nut.
- 5.2.4. As the heat builds to maximum (approximately two minutes) the dome at the output end of the heater will begin to glow. Observe the colour of the dome to check that the heater is producing the correct heat output as indicated above in section 5.1.3. Stand at least 3 metres away from heater output to make observations. Minor adjustments to heat output may be required during the first 60 hours of use. If necessary readjust the air pressure valve as indicated in section 5.1.4. to achieve the correct dome colour.
- 5.2.5. Turn off the heater at the rocker switch and unplug from the mains supply (**except for the AB200.V2, see section 5.2.6 below**). **DO NOT** touch the heater outlet as this will remain hot for some time. Store in a dry, safe, childproof area.
- 5.2.6. **Always shut down the AB200.V2 using the ON/OFF switch. Leave the heater plugged into the mains supply for at least 3 minutes.** (The AB200.V2 is fitted with an aftercooling timer that allows the fan to rotate for approximately 2 minutes after shutdown, to cool the combustion chamber and release residual heat.) **NEVER SHUT DOWN THE HEATER BY PULLING OUT THE PLUG.**

5.3. **Monitoring the heat output.** The heat output should be checked on a daily basis by observing the outlet dome operating colour, as described in Section 5.1.3. If, after a period of time, the heat output begins to fall this indicates that either the unit requires maintenance, as laid out in Section 6, or that the environmental conditions the unit is operating in are not correct, see Section 4. **DO NOT ATTEMPT TO TURN UP THE AIR PRESSURE TO COMPENSATE FOR HEAT LOSS** as this could result in damage to the combustion chamber and would invalidate the warranty.

- 5.3.1. If there is any doubt about the efficient operation of the heater, the air pressure should be checked more exactly using a pressure gauge which will measure up to 30 p.s.i. and has a 1/8" BSP thread. With the heater turned off and unplugged from the mains, remove the threaded plug from below the air pressure valve and attach the gauge, see fig.5.B. Start the heater and compare the pressure reading with the chart shown on the right. If the reading differs from the chart this indicates that maintenance is required as laid out in Section 6. You should also investigate whether the environmental conditions at the location of the heater are suitable, with particular reference to the amount and quality of the air supply.

	Working Pressures bar/psi	
	Diesel	Paraffin
AB602.V4	0.26/3.77	0.28/4.06
AB200.V2	0.34/4.9	0.34/4.9
AB801.V5	0.26/3.77	0.33/4.78
AB80.V5	0.26/3.77	0.33/4.78
AB100.V5	0.30/4.35	0.36/5.22
AB160.V5	0.30/4.35	0.39/5.65

- 5.3.2. Turn off the heater as instructed in sections 5.1.5. & 5.2.5. Remove the gauge and replace the plug before turning on the heater again.

6. MAINTENANCE



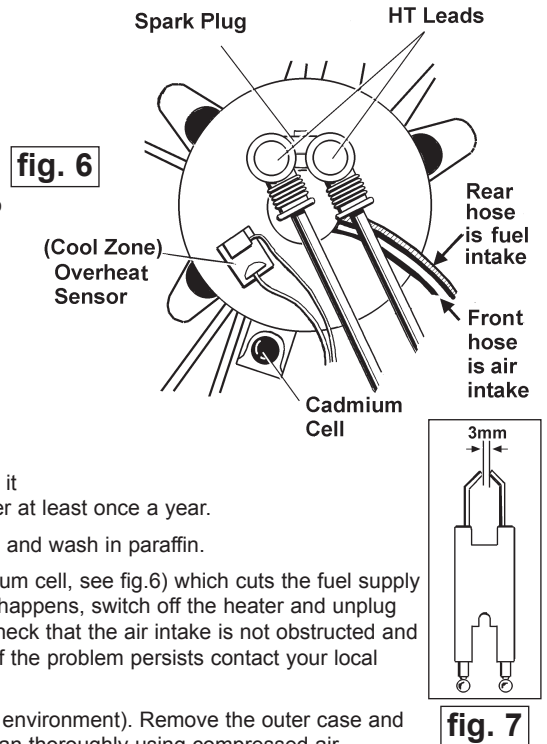
WARNING! MAINTENANCE MUST ONLY BE UNDERTAKEN BY A QUALIFIED PERSON. WE STRONGLY RECOMMEND THAT ALL SERVICING IS DONE BY YOUR LOCAL SERVICE AGENT.

Looking after your AB heater will pay dividends, ensuring heat as and when you need it and avoiding frustrating operational problems.

IMPORTANT! We strongly recommend that you arrange for heater servicing during the summer months to avoid being left without heat during the winter.

WARNING! Unplug unit from mains power supply before opening or servicing heater. See Section 1 regarding electrical safety and maintenance.

- 6.1. **General.** Keep the heater clean; wipe outer case with a damp, clean cloth. Do not use abrasives. Clean fuel tank with a dry cloth. Oil wheels if necessary. Check heater for damage and immediately repair or replace with authorised parts. Contact your Sealey Service Agent.
- 6.2. **Spark plug (electrode).** Remove, clean and check that the plug gap is 3mm (fig.7). For paraffin check the plug on a monthly basis (or if you have starting problems). If using diesel clean plug every 50 hours (or once every working week if less than 50 hours).
- 6.3. **Air filter.** The cast alloy compressor unit is protected by an extra large filter element. The filter should be cleaned regularly, especially if the appliance is used in a dusty environment. Remove filter end cover, take out the filter, wash it using a light detergent and dry thoroughly before re-installing. Replace the filter at least once a year.
- 6.4. **Fuel filter.** The fuel line is fitted with an in-line filter. To clean the filter, remove and wash in paraffin.
- 6.5. **Flame-out device.** The AB heaters are fitted with a flame-out device (a cadmium cell, see fig.6) which cuts the fuel supply should the flame be inadvertently extinguished, or if the unit overheats. If this happens, switch off the heater and unplug from the mains supply. Check the heater to determine the fault. In particular check that the air intake is not obstructed and that the internal fan is rotating freely. Wait a few minutes and restart the unit. If the problem persists contact your local Sealey Service Agent.
- 6.6. **Fan.** Fan blades should be cleaned every 500 operating hours (depending on environment). Remove the outer case and clean the fan blades with a paraffin moistened cloth or very light solvent. Dry fan thoroughly using compressed air.



7. TROUBLESHOOTING

THE PROBLEM	THE CAUSE	THE SOLUTION
1. Pulsation or uneven firing.	1.1. Low fuel level or unit not level. 1.2. Air leak. 1.3. Water in fuel. 1.4. Low air pressure.	1.1. Fill tank, level unit. 1.2. Check air and fuel lines for air leaks. 1.3. Drain, flush and refill with clean fuel. 1.4. Adjust air pressure, Clean air filter.
2. Motor does not start.	2.1. No power to unit, low voltage. 2.2. Defective motor. 2.3. Flame out device activated. 2.4. Fan jammed on outer case.	2.1. Check outlet and fuse. Check power lead, check fan not fouling on outer case. 2.2. Replace motor or motor parts (contact service agent). 2.3. Check reason, wait three minutes and restart. 2.4. Switch off mains, open case and check fan clearance.
3. Motor runs slowly.	3.1. Low voltage. 3.2. Tight compressor. 3.3. Motor defective.	3.1. Check length and size of extension cord. 3.2. With unit unplugged turn fan by hand. If fan does not turn freely adjust compressor ring. Also check to ensure the outer cover is not fouling on the fan. 3.3. With unit unplugged fan turns freely. Replace motor (contact service agent).
4. Motor starts, but heater does not ignite and after a short time locks out.	4.1. Low fuel level. 4.2. Leak in fuel line. 4.3. Burner nozzle blocked. 4.4. Diesel viscosity high. 4.5. Fuel filter blocked. 4.6. Defective spark plug. 4.7. Dirty fuel. 4.8. Fault in flame-out system.	4.1. Check fuel and fill tank if required. 4.2. Tighten or replace 4.3. Clean nozzle. 4.4. Low temperature, mix 10-20% paraffin to the diesel. 4.5. Clean or replace filter. 4.6. Check for wear or adjust properly. 4.7. Drain, flush and refill tank. 4.8. Contact local service agent.
5. Flames come out of the heater mouth.	5.1. Wrong fuel. 5.2. Excess air pressure. 5.3. Improper air flow. 5.4. Air leak in air line.	5.1. Use correct fuel only. 5.2. Adjust pressure to nominal. 5.3. Dirty or loose fan, air entrance blocked. 5.4. Replace.
6. Motor starts, heater ignites but flame-out system shuts off the appliance.	6.1. Dirty flame-out cadmium cell. 6.2. Fault with flame-out cadmium cell. 6.3. Defective connection between cell and flame-out control. 6.4. Faulty flame-out control.	6.1. Clean and check "Cad Cell" to ensure that it responds to light. 6.2. Check as in 6.1. and replace if necessary. 6.3. Check that connection is correct. 6.4. Check and replace if necessary.

8. DECLARATION OF CONFORMITY

Declaration of Conformity

PARAFFIN/DIESEL HEATERS
AB602.V4, AB200.V2, AB801.V5,
AB80.V5, AB100.V5, AB160.V5
 98/37/EC Machinery Directive
 79/23/EEC Low Voltage Directive
 89/336/EEC EMC Directive
 93/68/EEC CE Marking Directive

We, the sole importer into the UK, declare that the products listed below are in conformity with the following standards and directives.

The construction files for these products are held by the manufacturer and may be inspected, by a national authority, upon request to Jack Sealey Ltd.



Signed by Mark Sweetman

28th February 2008

For Jack Sealey Ltd. Sole importer into the UK of Sealey Power Products.

NOTE: It is our policy to continually improve products and as such we reserve the right to alter data, specifications and component parts without prior notice.

IMPORTANT: No liability is accepted for incorrect use of product.

WARRANTY: Guarantee is 12 months from purchase date, proof of which will be required for any claim.

INFORMATION: For a copy of our latest catalogue and promotions call us on 01284 757525 and leave your full name and address, including postcode.



Sole UK Distributor
 Sealey Group,
 Bury St. Edmunds, Suffolk.



01284 757500



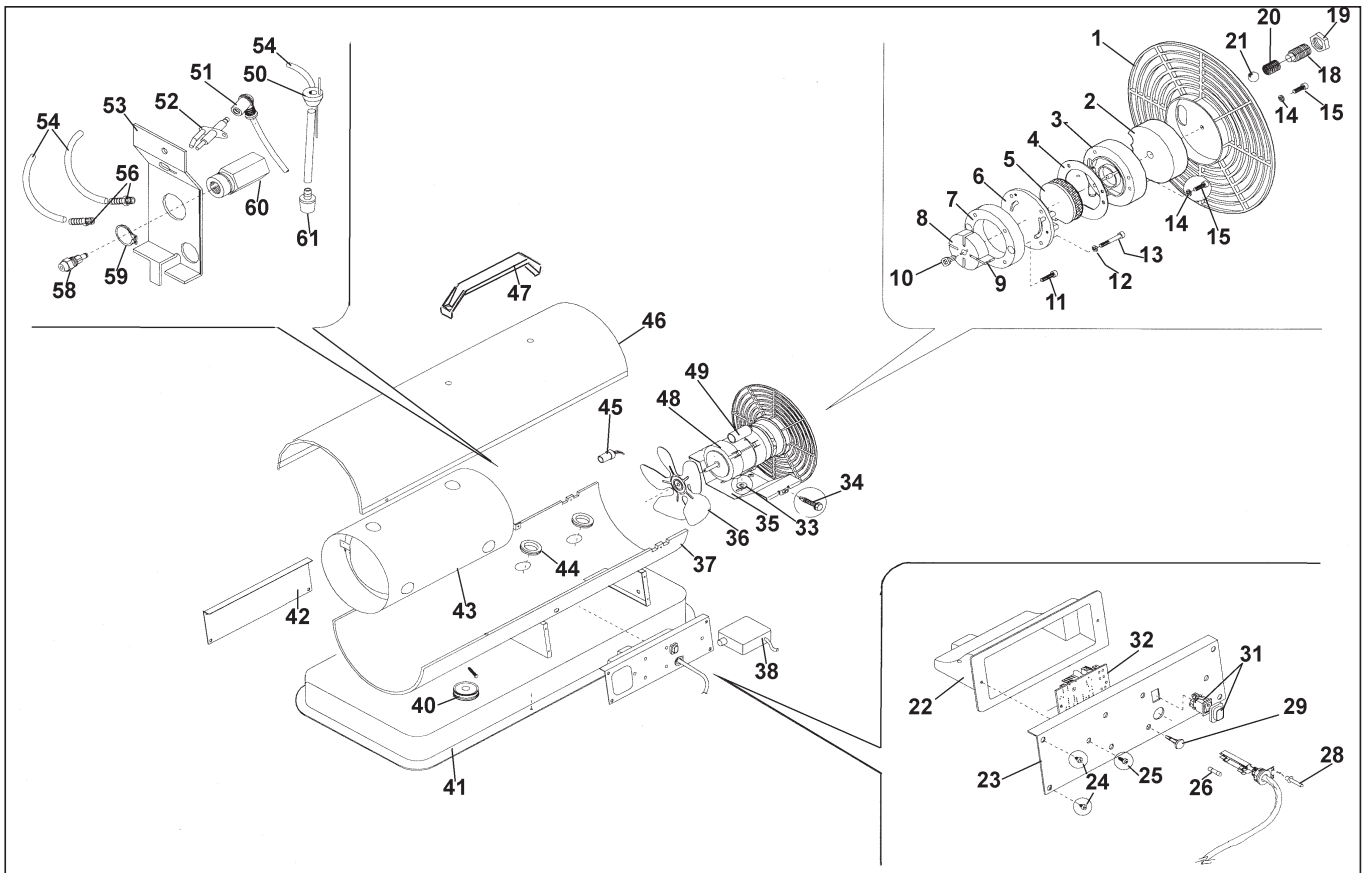
01284 703534



www.sealey.co.uk



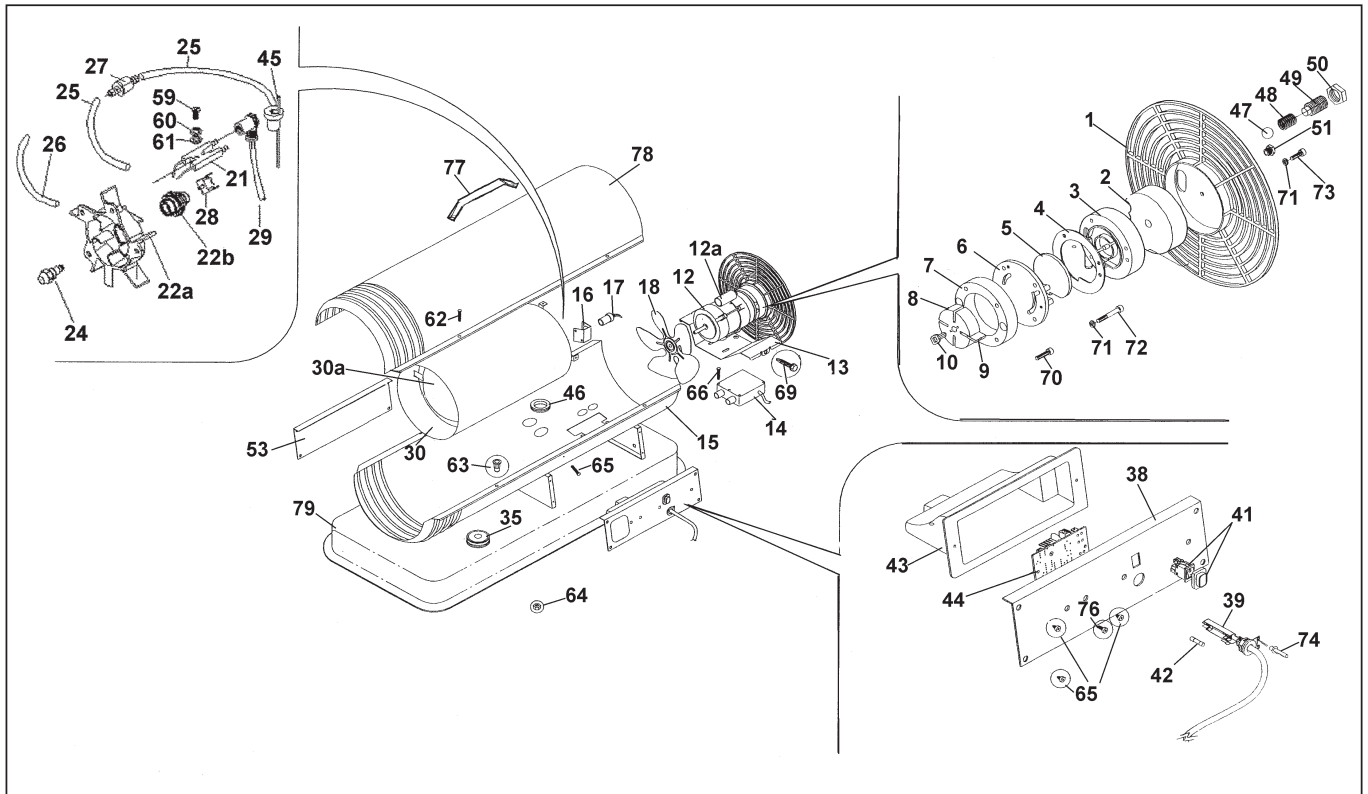
sales@sealey.co.uk



ITEM	PART NUMBER	DESCRIPTION	ITEM	PART NUMBER	DESCRIPTION
1	SL1006000111	REAR GRID	32	SL1047003611	FLAME CONTROL UNIT
2	SL1086001711	SUCTION FILTER	33	SL1018000800	WASHER
3	SL1094007311	FILTER CASING	34	SL1016010200	SCREW
4	SL1002001311	GASKET	35	SL1094005911	MOTOR SUPPORT
5	SL1086000111	OUTLET FILTER	36	SL1087006011	FAN, D.190 15° D12.7
6	SL1094007211	COMPRESSOR COVER	37	SL015911	LOWER CASING
7	SL1094008111	STATOR RING TH.17	38	SL1033004800	IGNITION TRANSFORMER
8	SL1099001611	ROTOR, TH.17	40	SL1094004311	TANK CAP
9	SL1099001511	BLADE, TH.17	41	SL020MN820	TANK
10	SL1001008211	ROTOR CLIP	42	SL020C20	RIGHT SIDE PANEL
11	SL1016005011	SCREW	43	SLGRY015	COMBUSTION CHAMBER
12	SL1018001600	WASHER	44	SL1002002100	RUBBER RING
13	SL1016005100	SCREW	45	SL1050000911	FLAME SENSOR
14	SL1018001600	WASHER	46	SLCOP015MNG11	UPPER CASING
15	SL1016007700	SCREW	47	SL1001002700	HANDLE
18	SL1023002511	ADJUSTING SCREW	48	SL1040011411	MOTOR, 70W 230V 50Hz
19	SL1017002111	NUT	49	SL1049001411	CAPACITOR, 4µF
20	SL1023004511	SPRING	50	SL1002005711	SUCTION GASKET (25mm DIAMETER)
21	SL1023002411	STEEL BALL 5.4mm	51	SL1039041311	HT CABLE
22	SL1001007736	ELECTRICAL PANEL COVER	52	SL1030002311	IGNITION ELECTRODE
23	SL020N20	LEFT SIDE PANEL	53	SL1094077211	COMBUSTION HEAD
24	SL1016001700	SCREW	54	SL1078000311	AIR HOSE L=480mm
25	SL1016008711	SCREW	56	SL1067006011	HOSE CONNECTOR
26	SL1035001111	FUSE, 3.15A DELAYED ACTION	58	SL1088010111	NOZZLE, 0.4gph
28	SL1019002800	RIVET	59	SL1018004011	SEEGER RING
29	SL1001015680	SPACER	60	SL1001017011	NOZZLE HOLDER
31	SL1032001900	SWITCH	61	SL1086004011	OIL SUCTION FILTER

Issue No: 1
 Date Issued: 210606

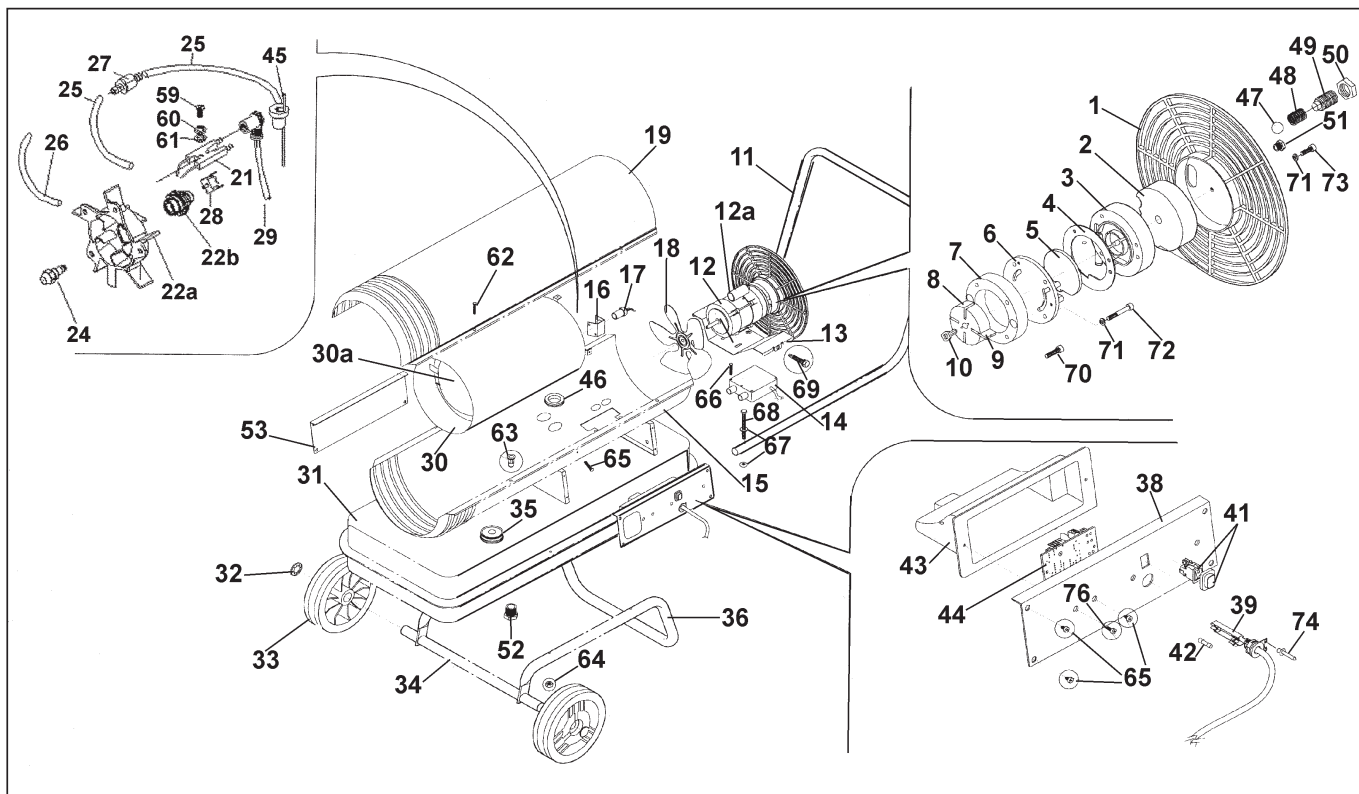
NOTE: It is our policy to continually improve products and as such we reserve the right to alter data, specifications and component parts without prior



ITEM	PART NUMBER	DESCRIPTION	ITEM	PART NUMBER	DESCRIPTION
1	SL1006000111	REAR GRID	39	SL1031001800	CABLE CLAMP
2	SL1086001711	SUCTION FILTER	41	SL1032001900	SWITCH
3	SL1094007311	FILTER CASING	42	SL1035001111	FUSE 3.15A DELAYED ACTION
4	SL1002001311	GASKET	43	SL1001007736	ELECTRICAL PANEL COVER
5	SL1086000111	OUTLET FILTER	44	SL1047003611	BURNER CONTROL UNIT
6	SL1094007211	COMPRESSOR COVER	45	SL1002005711	SUCTION GASKET
7	SL1094008111	STATOR RING TH.17	46	SL1002002100	RUBBER RING
8	SL1099001611	ROTOR TH.17	47	SL1023002411	BALL D.6 mm
9	SL1099001511	BLADE TH.17	48	SL1023004511	SPRING
10	SL1001008211	COUPLING L.17	49	SL1023002511	ADJUSTING SCREW
12	SL1040005411	MOTOR 100W 230V 50Hz	50	SL1017002111	NUT
12A	SL1049001411	CAPACITOR 4µF	51	SL1067006911	CAP
13	SL1094005911	MOTOR SUPPORT	53	SL020C20	SIDE PANEL
14	SL1033004700	TRANSFORMER+2 1039043500 CABLE	59	SL1016006000	SCREW
15	SLCRP020STD11	LOWER BODY	60	SL1018001000	WASHER
16	SL1094104211	FLAME SENSOR SUPPORT	62	SL1016005211	SCREW
17	SL1050000911	FLAME SENSOR	63	SL1019001600	RIVET
18	SL1087003411	FAN D.190 34° OP SHAFT D.12.7	64	SL1017002111	NUT
21	SL1030001111	ELECTRODE	65	SL1016001600	SCREW
22A	SL1094138011	BURNER HEAD	66	SL1016005711	SCREW
22B	SL1001017011	NOZZLE HOLDER	69	SL1016004500	SCREW
24	SL1088014211	NOZZLE 0.65gph	70	SL1016005011	SCREW
25	SL1078001511	OIL HOSE L=130mm	71	SL1018001600	WASHER
26	SL1078000111	AIR HOSE L=400mm	72	SL1016005100	SCREW
27	SL1086001911	OIL SUCTION FILTER	73	SL1016007700	SCREW
28	SL1036001611	SAFETY THERMOSTAT	74	SL1019002800	RIVET
29	SL1039041311	HT CABLE L=600mm	76	SL1016001700	SCREW
30	SLGRY020	COMBUSTION CHAMBER	77	SL1001002700	HANDLE
30A	SL1094051411	FRONT DISC / FLAME SHIELD	78	SL020MNG911	UPPER BODY
35	SL1094004311	TANK CAP	79	SL020MN820	TANK
38	SL020N20	LEFT SIDE PANEL			

Issue: 1
 Date Issued: 210606

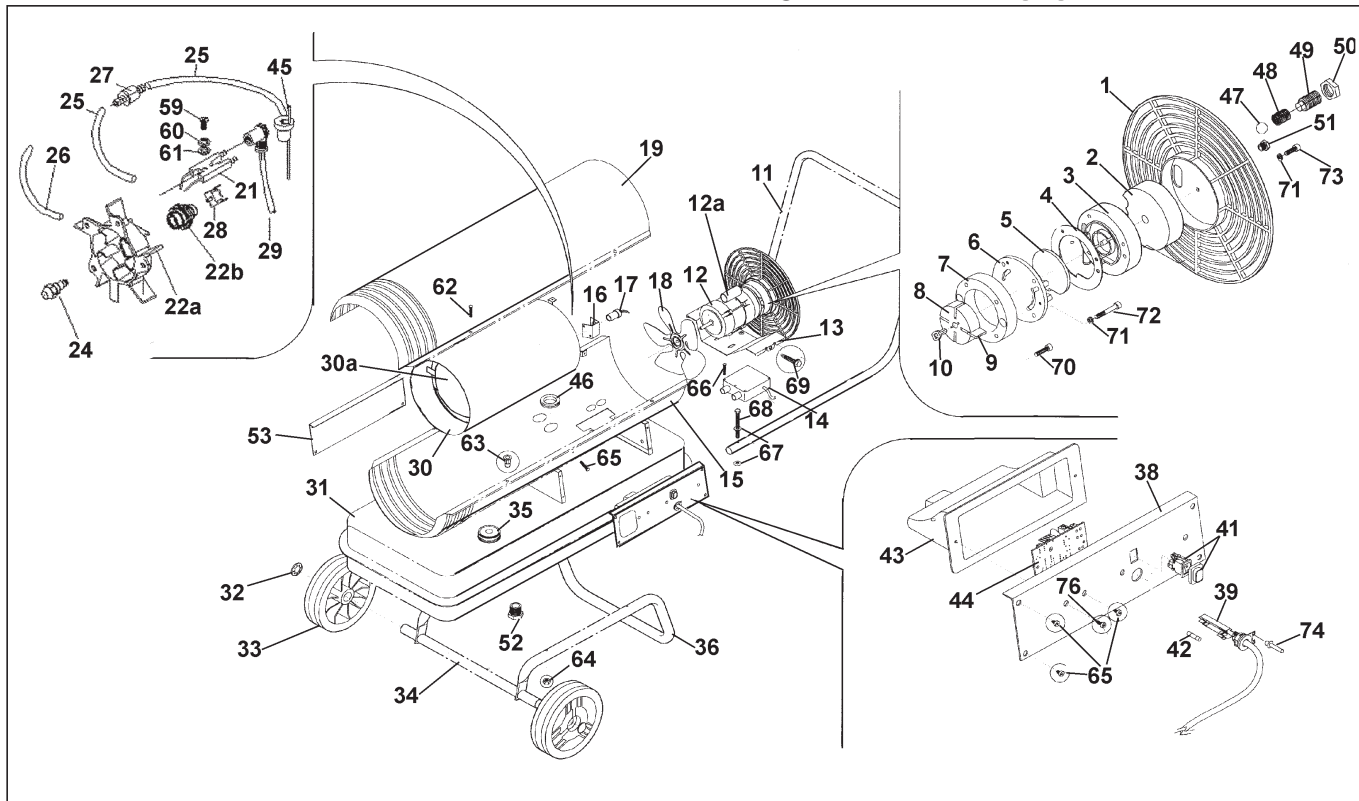
NOTE: It is our policy to continually improve products and as such we reserve the right to alter data, specifications and component parts without prior notice.



ITEM	PART NUMBER	DESCRIPTION	ITEM	PART NUMBER	DESCRIPTION
1	SL1006000111	REAR GRID	35	SL1094004311	TANK CAP
2	SL1086001711	SUCTION FILTER	36	SLGRY02020	FRAME
3	SL1094007311	FILTER CASING	38	SL020N20	LEFT SIDE PANEL
4	SL1002001311	GASKET	39	SL1031001800	CABLE CLAMP
5	SL1086000111	OUTLET FILTER	41	SL1032001900	SWITCH
6	SL1094007211	COMPRESSOR COVER	42	SL1035001111	FUSE 3,15A DELAYED ACTION
7	SL1094008111	STATOR RING TH.17	43	SL1001007736	ELECTRICAL PANEL COVER
8	SL1099001611	ROTOR TH.17	44	SL1047003611	FLAME CONTROL UNIT
9	SL1099001511	BLADE TH.17	45	SL1002005711	SUCTION GASKET (25mm DIAMETER)
10	SL1001008211	ROTOR CLIP	46	SL1002002100	RUBBER RING
11	SLGRY2020	HANDLE	47	SL1023002411	STEEL BALL D.6 mm
12	SL1040005411	MOTOR 100W 230V 50Hz	48	SL1023004511	SPRING
12A	SL1049001411	CAPACITOR, 4µF	49	SL1023002511	ADJUSTING SCREW
13	SL1094005911	MOTOR SUPPORT	50	SL1017002111	NUT
14	SL1033004700	TRANSFORMER+2 1039043500 CABLE	51	SL1067006911	CAP
15	SLCRP020STD11	LOWER BODY	52	SL1067007000	DRAIN CAP
16	SL1094104211	FLAME SENSOR SUPPORT	53	SL020C20	RIGHT SIDE PANEL
17	SL1050000911	FLAME SENSOR	59	SL1016006000	SCREW
18	SL1087003411	FAN D.190 34 OP SHAFT D.12.7	60	SL1018001000	WASHER
19	SLCOP020STD11	UPPER BODY	61	SL1018001000	WASHER
21	SL1030001111	ELECTRODE	62	SL1016005211	SCREW
22A	SL1094138011	BURNER HEAD	63	SL1019001600	RIVET
23B	SL1001017011	NOZZLE HOLDER	64	SL1017000600	NUT
24	SL1088014211	NOZZLE 0.65gph	65	SL1016001600	SCREW
25	SL1078000211	OIL HOSE L=170mm	66	SL1016005711	SCREW
26	SL1078000111	AIR HOSE L=400mm	67	SL1018000800	WASHER
27	SL1086001911	OIL SUCTION FILTER	68	SL1016000100	SCREW
28	SL1036001611	SAFETY THERMOSTAT	69	SL1016004500	SCREW
29	SL1039041311	HT CABLE	70	SL1016005011	SCREW
30	SLGRY020	COMBUSTION CHAMBER	71	SL1018001600	WASHER
30A	SL1094051411	FLAME SHIELD / FRONT DISC	72	SL1016005100	SCREW
31	SL020STD20	TANK	73	SL1016007700	SCREW
32	SL1022000811	WHEEL RING	74	SL1019002800	RIVET
33	SL1004000611	WHEEL D.150mm	76	SL1016001700	SCREW
34	SLGRY2001	AXLE			

Issue: 1
 Date Issued: 210606

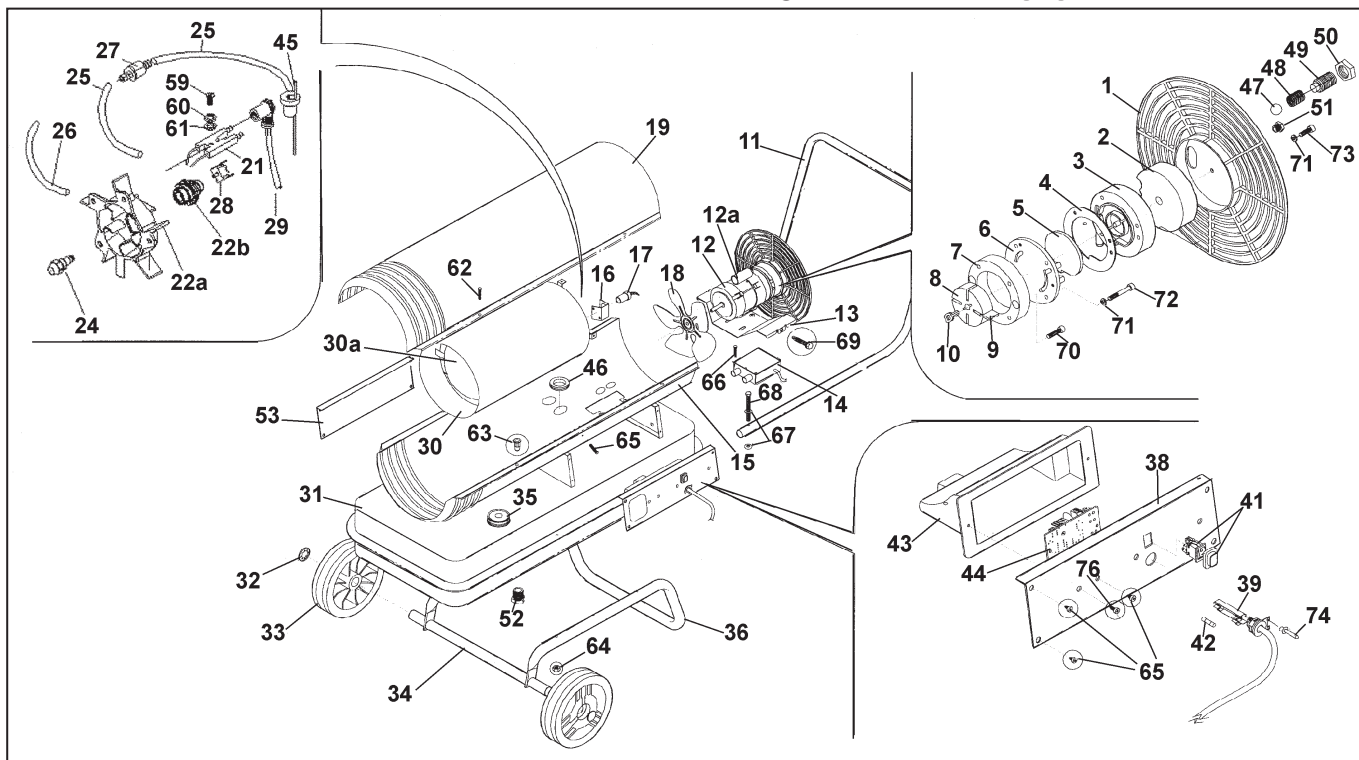
NOTE: It is our policy to continually improve products and as such we reserve the right to alter data, specifications and component parts without prior notice.



ITEM	PART NUMBER	DESCRIPTION	ITEM	PART NUMBER	DESCRIPTION
1	SL1006000211	REAR GRID	35	SL1094004311	TANK CAP
2	SL1086001711	SUCTION FILTER	36	SLGRY02820	FRAME
3	SL1094007311	FILTER CASING	38	SL028N20	LEFT SIDE PANEL
4	SL1002001311	GASKET	39	SL1031001800	CABLE CLAMP
5	SL1086000111	OUTLET FILTER	41	SL1032001900	SWITCH
6	SL1094007211	COMPRESSOR COVER	42	SL1035001111	FUSE 3,15A DELAYED ACTION
7	SL1094008111	STATOR RING TH.17	43	SL1001007736	ELECTRICAL PANEL COVER
8	SL1099001611	ROTOR TH.17	44	SL1047003611	CONTROL UNIT
9	SL1099001511	BLADE TH.17	45	SL1002005711	SUCTION GASKET (25mm diameter)
10	SL1001008211	ROTOR CLIP	46	SL1002002100	RUBBER RING
11	SLGRY2820	HANDLE	47	SL1023002411	STEEL BALL D.6 mm
12	SL1040005511	MOTOR 150W 230V 50Hz	48	SL1023004511	SPRING
12A	SL1049001000	CAPACITOR	49	SL1023002511	ADJUSTING SCREW
13	SL1094006011	MOTOR SUPPORT	50	SL1017002111	NUT
14	SL1033004700	TRANSFORMER+2 1039043500 CABLE	51	SL1067006911	CAP
15	SL1094080511	LOWER BODY	52	SL1067007000	DRAIN CAP
16	SL1094104211	FLAME SENSOR SUPPORT	53	SL028C20	RIGHT SIDE PANEL
17	SL1050000911	FLAME SENSOR	59	SL1016006000	SCREW
18	SL1087003511	FAN D.210 34° SHAFT D.12.7	60	SL1018001000	WASHER
19	SLCOP028STD11	UPPER BODY	61	SL1018001000	WASHER
21	SL1030001111	ELECTRODE	62	SL1016005211	SCREW
22A	SL1094138011	BURNER HEAD	63	SL1019001600	RIVET
22B	SL1001017011	BURNER NOZZLE	64	SL1017000600	NUT
24	SL1088014311	NOZZLE 0,75gph	65	SL1016001600	SCREW
25	SL1078000411	OIL HOSE L=200mm	66	SL1016005711	SCREW
26	SL1078000311	AIR HOSE L=480mm	67	SL1018000800	WASHER
27	SL1086001911	OIL SUCTION FILTER	68	SL1016000100	SCREW
28	SL1036001611	SAFETY THERMOSTAT	69	SL1016004500	SCREW
29	SL1039041311	HT CABLE	70	SL1016005011	SCREW
30	SLGRY328	COMBUSTION CHAMBER	71	SL1018001600	WASHER
30A	SL1094051511	FLAME SHIELD	72	SL1016005100	SCREW
31	SL028STD20	TANK	73	SL1016007700	SCREW
32	SL1022000911	WHEEL RING	74	SL1019002800	RIVET
33	SL1004000311	WHEEL D.175mm	76	SL1016001700	SCREW
34	SLGRY2801	AXLE			

Issue: 1
 Date Issued: 210606

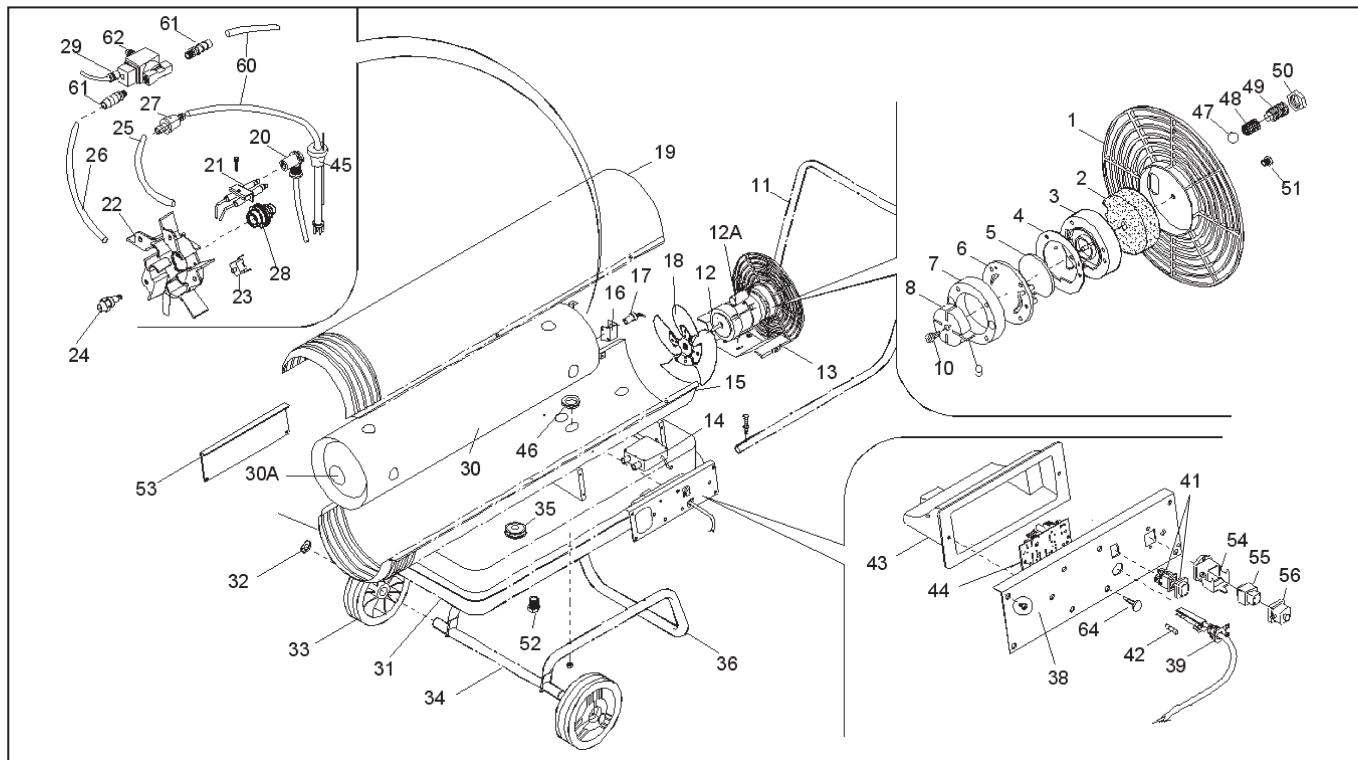
NOTE: It is our policy to continually improve products and as such we reserve the right to alter data, specifications and component parts without prior notice.



ITEM	PART NUMBER	DESCRIPTION	ITEM	PART NUMBER	DESCRIPTION
1	SL1006000311	REAR GRID	35	SL1094004311	TANK CAP
2	SL1086001711	SUCTION FILTER	36	SLGRY04020	FRAME
3	SL1094007311	FILTER CASING	38	SL028N20	LEFT SIDE PANEL
4	SL1002001311	GASKET	39	SL1031001800	CABLE CLAMP
5	SL1086000111	OUTLET FILTER	40	SL1002002755	SWITCH CAP
6	SL1094007211	COMPRESSOR COVER	41	SL1032001900	SWITCH
7	SL1094008211	STATOR RING TH.21	42	SL1035001211	FUSE 5A DELAYED ACTION
8	SL1099001811	ROTOR TH.21	43	SL1001007736	ELECTRICAL PANEL COVER
9	SL1099001411	BLADE TH.21	44	SL1047003611	FLAME CONTROL UNIT
10	SL1001008311	COUPLING L.21	45	SL1002005711	SUCTION GASKET
11	SLGRY4020	HANDLE	46	SL1002002100	RUBBER RING
12	SL1040005611	MOTOR 250W 230V 50Hz	47	SL1023002411	STEEL BALL D.6 mm
12A	SL1049001000	CAPACITOR	48	SL1023004511	SPRING
13	SL1094006111	MOTOR SUPPORT	49	SL1023002511	ADJUSTING SCREW
14	SL1033004700	TRANSFORMER+2 1039043500 CABLE	50	SL1017002111	NUT
15	SLCRP040STD11	LOWER BODY	51	SL1067006911	CAP
16	SL1094104211	FLAME SENSOR SUPPORT	52	SL1067007000	DRAIN CAP
17	SL1050000911	FLAME SENSOR	53	SL028C20	RIGHT SIDE PANEL
18	SL1087003611	FAN D.254 34 SHAFT D.12.7	59	SL1016006000	SCREW
19	SLCOP040STD11	UPPER BODY	60	SL1018001000	WASHER
21	SL1030001111	ELECTRODE	61	SL1018000800	WASHER
22A	SL1094138011	BURNER HEAD	62	SL1016005211	SCREW
22B	SL1001017011	NOZZLE HOLDER	63	SL1019001600	RIVET
24	SL1088014411	NOZZLE 1,00gph	64	SL1017000600	NUT
25	SL1078000211	OIL HOSE L=200mm	65	SL1016001600	SCREW
26	SL1078000311	AIR HOSE L=480mm	66	SL1016005711	SCREW
27	SL1086001911	OIL SUCTION FILTER	67	SL1018000800	WASHER
28	SL1036001611	SAFETY THERMOSTAT	68	SL1016000100	SCREW
29	SL1039041311	HT CABLE	69	SL1016004500	SCREW
30	SLGRY041	COMBUSTION CHAMBER	70	SL1016005011	SCREW
30A	SL1094063811	FLAME SHIELD	71	SL1018001600	WASHER
31	SL0401STD20	TANK	72	SL1016005100	SCREW
32	SL1022000911	WHEEL RING	73	SL1016007700	SCREW
33	SL1004000200	WHEEL 200mm D	74	SL1019002800	RIVET
34	SLGRY4001	AXLE	76	SL1016001700	SCREW

Issue: 1
 Date Issued: 210600

NOTE: It is our policy to continually improve products and as such we reserve the right to alter data, specifications and component parts without prior notice.



ITEM	PART NUMBER	DESCRIPTION			
1	SL1006000311	REAR GRID	39	SL1031001800	CABLE CLAMP
2	SL1086001711	SUCTION FILTER	41	SL1032001900	SWITCH
3	SL1094007311	FILTER CASING	42	SL1035001211	FUSE 5 A DELAYED ACTION
4	SL1002001311	GASKET	43	SL1001007736	ELECTRICAL PANEL COVER (SO)
5	SL1086000111	OUTLET FILTER	44	SL1047004711	CONTROL BOARD
6	SL1094007211	COMPRESSOR COVER	45	SL1002005711	SUCTION GASKET (25MM DIAMETER)
7	SL1099002911	STATOR RING TH.21	46	SL1002002100	RUBBER RING
8	SL1099001811	ROTOR TH.21	47	SL1023002411	STEEL BALL 5.4mm (USE ME-1501/1149)
9	SL1099001411	BLADE TH.21	48	SL1023004511	SPRING
10	SL1001008311	COUPLING L.21	49	SL1023002511	ADJUSTING SCREW
11	SLGRY4020	HANDLE	50	SL1017002111	NUT
12	SL1040005611	MOTOR 250W 230V 50Hz	51	SL1067006911	CAP
12A	SL1049001000	CAPACITOR	53	SL028C20	SIDE RIGHT PANEL
13	SL1094006111	MOTOR SUPPORT (SO)	54	SL1043000600	SOCKET CASING
14	SL1033004700	TRANSFORMER	55	SL1043000400	SOCKET
15	SLGRY06011	LOWER BODY	56	SL1052001800	CAP
16	SL1094104211	FLAME SENSOR SUPPORT	60	SL1078001611	OIL HOSE L=230MM
17	SL1050000911	FLAME SENSOR	61	SL1067005800	HOSE HOLDER
18	SL1087008311	FAN	62	SL1042003611	SOLENOID VALVE
19	SLGRY06011T	UPPER BODY			
20	SL1039043500	CABLE			
21	SL1030001111	ELECTRODE			
22	SL1094145311	BURNER HEAD			
23	SL1036001611	SAFETY THERMOSTAT			
24	SL1088014611	NOZZLE			
25	SL1078000211	OIL HOSE L=170mm			
26	SL1078001611	OIL HOSE L=230MM			
27	SL1086001911	OIL SUCTION FILTER			
28	SL1001017011	NOZZLE HOLDER			
29	SL1043002655	CONNECTOR + CABLE (SO)			
30	SLGRY060	COMBUSTION CHAMBER			
30A	SL1094145811	FLAME SHIELD			
31	SL040STD20	TANK			
32	SL1022000911	WHEEL RING			
33	SL1004000200	WHEEL 200mm D (SO)			
34	SLGRY4020AX	AXLE			
35	SL1094004311	TANK CAP			
36	SLGRY04020	FRAME			
38	SL025F20	LEFT SIDE PANEL			

Issue: 1
 Date Issued: 210606

NOTE: It is our policy to continually improve products and as such we reserve the right to alter data, specifications and component parts without prior notice.