

Thank you for purchasing a Sealey jack. Manufactured to a high standard this product will, if used according to these instructions and properly maintained, give you years of trouble free performance.



IMPORTANT: READ THESE INSTRUCTIONS CAREFULLY. NOTE THE SAFE OPERATIONAL REQUIREMENTS, WARNINGS AND CAUTIONS. USE THIS JACK CORRECTLY AND WITH CARE FOR THE PURPOSE FOR WHICH IT IS INTENDED. FAILURE TO DO SO MAY CAUSE DAMAGE AND/OR PERSONAL INJURY AND WILL INVALIDATE THE WARRANTY. RETAIN THESE INSTRUCTIONS FOR FUTURE USE.

1. SAFETY INSTRUCTIONS

- ✓ Disconnect jack from air supply before changing parts, servicing or performing any maintenance.
- ❑ **WARNING!** Ensure correct air pressure is maintained and not exceeded. Recommended pressure range 130-170psi.
- ✓ Keep air hose away from heat, oil and sharp edges. Check air hose for wear before each use and ensure that all connections are secure.
- ✓ Ensure jack is kept clean and in good working order. Immediately repair or replace damaged parts.
- ✓ Use recommended parts only. Incorrect parts may be dangerous and will invalidate the warranty.
- ✓ Use a qualified person to lubricate and maintain the jack. **DO NOT** use brake fluid to top up system. Use Sealey Hydraulic Oil only.
- ✓ Locate jack in a suitable, well lit work area. Keep area clean and tidy and free from unrelated materials.
- ✓ Use jack on level and solid ground, preferably concrete. *Avoid tarmacadam since jack may sink in.*
- ✓ Place wedges under wheels of vehicle (*but ensure wheels of Jack can move freely*).
- ✓ Ensure the vehicle handbrake is applied, the engine is switched off and the transmission is in first gear (or in "Park" for automatics).
- ✓ Ensure minimum distance of 0.5m between vehicle and static objects such as doors, walls, etc. to allow for tilting when jacking.
- ✓ Ensure all non-essential persons keep a safe distance and that there are no passengers in the vehicle to be jacked up.
- ✓ Place jack under vehicle manufacturer's recommended jacking point (*see vehicle handbook*).
- ✓ Check that the jacking point is stable, centred on the jack saddle and is free from grease or oil.
- ✓ Ensure jack wheels are free to move and there are no obstructions.
- ▲ **DANGER:** Use jack for lifting only, **NOT** for supporting the jacked load. Use suitable **axle stands** under vehicle before proceeding with task.
- ✗ **DO NOT** apply your body weight to the handle during jacking. The handle is only for moving the jack to and from the jacking location.
- ✗ **DO NOT** operate the jack if parts are missing or damaged.
- ✗ **DO NOT** exceed the rated capacity of the jack.
- ✗ **DO NOT** allow the vehicle to move during jacking and do not use the jack to move the vehicle.
- ✗ **DO NOT** jack a vehicle if there is a risk of the spillage of fuel, battery acid, or other dangerous substances.
- ✗ **DO NOT** work under the vehicle until **axle stands** have been correctly positioned.
- ✗ **DO NOT** use the jack for purposes other than that for which it is designed.
- ✗ **DO NOT** adjust the safety valve.
- ✗ **DO NOT** yank the hose from the air supply, and **DO NOT** direct air from the air hose at yourself or others.
- ✓ Ensure there are no persons or obstructions beneath the vehicle before lowering.
- ✓ When not in use, disconnect jack from the air supply and store, in the lowered position, in a safe, dry, childproof area.

2. INTRODUCTION & ASSEMBLY

2.1. Introduction

Powerful and reliable, these jacks are ideal for workshop or roadside use and take the effort out of lifting heavy plant, tractors and commercial vehicles. With low minimum heights, they are especially suitable for trucks and buses which have low jacking points and long overhangs. Models 50.20 and 50.30 have telescopic handles to further aid jack positioning beneath such vehicles. These Viking jacks are made in Denmark and offers a range of lifting heights. Each is supplied with one spacer (75mm) to close the gap between the saddle of the jack and the jacking point and optional 200, 250 and 300mm spacers are available, model nos. X200, X250 and X300. Jacks will require a compressor of at least 3hp.

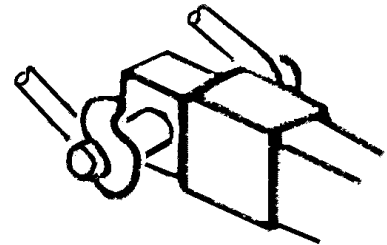
2.2. Assembly

Numbers in brackets refer to item numbers as shown in the parts diagrams.

- 2.2.1. Wrap air hoses (3 & 4) around handle mounting tube, as shown below, fit handle to body of jack using handle axle (5) and circlips (21).
- 2.2.2. Push-connect the air hoses to the quick connects (34 & 36).

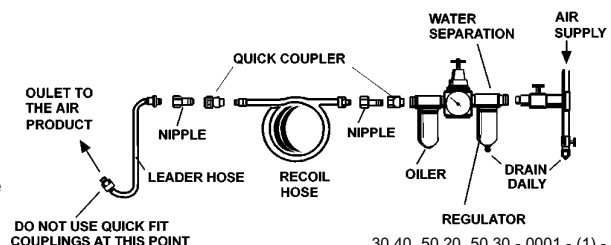
3. SPECIFICATIONS

Model	30.40	50.20	50.30
Max. capacity (ton)	.40	.50	.50
Min. height (mm)	.220	.220	.150
Max. height/capacity:			
Stage 1 (mm/ton)	.337/40	.337/50	.210/50
Stage 2 (mm/ton)	.445/20	.445/25	.263/25
Stage 3 (mm/ton)	-	-	.332/10
Piston stroke (mm)	.225	.225	.162
Length inc. handle (mm)	.2100	.2100	.2100
Width (mm)	.310	.310	.310
Working pressure (psi)	.130-170	.130-170	.130-170
Weight (kg)	.76	.80	.65



4. AIR SUPPLY

- 4.1. Ensure the jack control valve is in the central "off" position before connecting to the air supply.
- 4.2. You will require an air pressure of more than 130psi (max 170psi) to get the best performance from this jack.
- 4.3. ❑ **WARNING!** Ensure the air supply is clean and does not exceed 170psi. Too high an air pressure and/or unclean air will cause excessive wear, and may result in damage and/or personal injury.



- 4.4. Keep the air hose between the compressor and the air jack as short as possible and install a filter/separator and oiler.
- 4.5. Drain compressor air tank daily. Water in air line will damage jack.
- 4.6. Clean the compressor air inlet filter screen weekly.
- 4.7. Line pressure should be increased to compensate for unusually long air hoses (over 8 metres). The minimum bore for hose and fittings is 3/8".
- 4.8. Keep hose away from heat, oil and sharp edges. Check hoses for wear, and make certain that all connections are secure.

5. OPERATING INSTRUCTIONS

- 5.1. Preparation before use**
- 5.1.1. Oil all moving parts.
 - 5.1.2. If air supply does not have an oiler apply approximately 1ml of air tool oil into the air inlet before first use. Repeat after every 25 lifts.
 - 5.1.3. Connect the supply airline to the air inlet (32). Maximum air pressure 170psi (12 bar).
- 5.2. Using the jack**
- WARNING!** Ensure you have read and understood the Safety Instructions in Section 1 before commencing work.
- 5.2.1. Position the jack and appropriate extension under the vehicle manufacturer's recommended jacking point (*see vehicle handbook*).
 - 5.2.2. To raise the jack, move the control valve lever clockwise.
 - 5.2.3. When the vehicle has reached the desired height release the control lever which will automatically return to the hold position. This will shut off the air flow and hold the jack at the height to which it has been raised.
 - 5.2.4. Place axle stands in position and ensure Section 1 Safety Instructions are strictly applied before performing any task.
- 5.3. Lowering the jack**
- 5.3.1. Ensure there are no persons or obstructions beneath the vehicle before lowering, and remove any axle stands.
 - 5.3.2. To lower the jack, slowly and carefully move the control valve lever anticlockwise and the jack will lower in a controlled manner.
 - 5.3.3. Once completely lowered release the control lever which will return to the middle hold position. Remove the jack from under the vehicle.
 - 5.3.4. Turn off the air supply, disconnect the jack from the airline and store the jack, fully lowered, and airline.

6. MAINTENANCE

- ▲ IMPORTANT: Only fully qualified personnel should attempt maintenance or repair.**
- WARNING!** Disconnect jack from air supply before changing parts, servicing or performing any maintenance.
- 6.1. When the jack is not in use, the ram must be in the lowest position to minimise corrosion.
 - 6.2. Keep the jack clean and lubricate all moving parts on a regular basis.
 - 6.3. To check oil level, stand jack, fully lowered, on a level surface. Remove oil filler plug (28). The correct oil level is to the lower edge of the filler hole.
- NOTE:** Use only a good quality jack oil, such as SEALEY HYDRAULIC JACK OIL.
- WARNING! DO NOT use brake fluid, or any fluid other than hydraulic jack fluid, as this may cause serious damage to the jack and will invalidate the warranty!**
- WARNING!** Wear safety goggles.
- 6.4. Ensure the air filter located in the air valve is regularly checked and cleaned as necessary.
 - 6.5. Before each use check for broken, cracked, bent, or loose parts. If any suspect item is found remove jack from service and take the action necessary to remedy the problem.
DO NOT use the jack if it is believed to have been subject to abnormal load or shock. Inspect and take appropriate action.
 - 6.6. Hydraulic oil should be replaced annually to extend the life of the jack.

IMPORTANT: NO RESPONSIBILITY IS ACCEPTED FOR INCORRECT USE OF THE JACK.
 Air/Hydraulic products are repaired only by local service agents. We have service/repair agents in all parts of the UK. **DO NOT RETURN JACK TO US.**
 Please telephone us on 01284 757500 to obtain the address and phone number of your local agent. If jack is under guarantee please contact your dealer.

De-commissioning the jack
 When jack eventually becomes completely unserviceable, draw off oil into an approved container and dispose of jack and oil according to local regulations.

7. TROUBLESHOOTING

PROBLEM	POSSIBLE CAUSE	REMEDY
Vehicle does not lift.	1. Hydraulic oil low.	1. Replenish.
Air pump operates slowly.	1. Insufficient air supply. 2. Inlet filter blocked.	1. Use a larger compressor. 2. Clean filter.

For any other faults contact a service agent.

8. DECLARATION OF CONFORMITY

Declaration of Conformity We, the sole importer into the UK, declare that the products listed below are in conformity with the following standards and directives.	
Air/Hydraulic Trolley Jacks Models: 30.40, 50.20 & 50.30 93/68/EEC CE Marking Directive 98/37/EC Machinery Directive	The construction files for these products are held by the Manufacturer and may be inspected, by a national authority, upon request to Jack Sealey Ltd. Signed by Mark Sweetman 1st March 2001 <i>For Jack Sealey Ltd. Sole importer into the UK of Sealey Quality Machinery.</i>

NOTE: It is our policy to continually improve products and as such we reserve the right to alter data, specifications and component parts without prior notice.
IMPORTANT: No liability is accepted for incorrect use of product. **WARRANTY:** Guarantee is 12 months from purchase date, proof of which will be required for any claim. **INFORMATION:** For a copy of our latest catalogue and promotions call us on 01284 757525 and leave your full name and address, including postcode.

	Sole UK Distributor, Sealey Group, Bury St. Edmunds, Suffolk.	01284 757500	01284 703534	E-mail: sales@sealey.co.uk
--	---	--------------	--------------	-----------------------------------