



INSTRUCTIONS FOR:

TROLLEY JACK 3 TONNE STANDARD CHASSIS WITH AXLE STANDS (PAIR) 3 TONNE CAPACITY PER STAND

MODEL NO: **3010CX**

Thank you for purchasing a Sealey product. Manufactured to a high standard, this product will, if used according to these instructions, and properly maintained, give you years of trouble free performance.

IMPORTANT: PLEASE READ THESE INSTRUCTIONS CAREFULLY. NOTE THE SAFE OPERATIONAL REQUIREMENTS, WARNINGS & CAUTIONS. USE THE PRODUCT CORRECTLY AND WITH CARE FOR THE PURPOSE FOR WHICH IT IS INTENDED. FAILURE TO DO SO MAY CAUSE DAMAGE AND/OR PERSONAL INJURY AND WILL INVALIDATE THE WARRANTY. KEEP THESE INSTRUCTIONS SAFE FOR FUTURE USE.



Refer to instructions

1. SAFETY

1.1. JACK

- ✓ Ensure the jack is in sound condition and good working order. Take action for immediate repair or replacement of damaged parts. Use genuine parts only. The use of unapproved parts may be dangerous and will invalidate the warranty.
 - ✓ Locate the jack in a suitable, well lit working area.
 - ✓ Keep working area clean and tidy and free from unrelated materials.
 - ✓ Use jack on level and solid ground, preferably concrete. Avoid tarmac as jack may sink in.
 - ✓ Place chocks under wheels of vehicle (but ensure wheels of jack can move freely).
 - ✓ Ensure the vehicle's handbrake is engaged, the engine is switched off and transmission is in gear (or "PARK" if automatic).
 - ✓ Ensure minimum distance of 0.5m between vehicle and static objects such as doors, walls, etc., to allow for vehicle tilting.
 - ✓ Ensure there are no passengers in the vehicle.
 - ✓ Ensure all non-essential persons keep a safe distance whilst the jack is in use.
 - ✓ Only place jack under vehicle manufacturer's recommended lifting points (see *vehicle handbook*).
 - ✓ Check the lifting point is stable and centred on the jack saddle.
 - ✓ Ensure the jack wheels are free to move and that there are no obstructions.
 - ✓ Use correctly rated axle stands under the vehicle before proceeding with any task.
 - ✓ Ensure there are no persons or obstructions beneath the vehicle before lowering.
 - ✓ Use a qualified person to maintain or repair the jack hydraulic system.
 - ✓ When not in use, store jack, fully lowered, in a safe, dry, childproof area.
- IMPORTANT!** During the jacking operation, ensure that the vehicle-to-jack saddle contact point are always visible.
- ▲ **DANGER:** Use the jack for lifting only, **NOT** for supporting the lifted load.
 - * **DO NOT** operate the jack if damaged.
 - * **DO NOT** allow untrained persons to operate the jack.
 - * **DO NOT** exceed the rated capacity (3 Tonne) of the jack.
 - * **DO NOT** allow the vehicle to move while supported by the jack, or use the jack to move the vehicle.
 - * **DO NOT** jack vehicle if there is a risk of spillage of fuel, battery acid, or other dangerous substances.
 - * **DO NOT** work under the vehicle until suitably rated axle stands have been correctly positioned.
 - * **DO NOT** use the jack for purposes other than which it is intended.
 - * **DO NOT** top up hydraulic system with brake fluid. Use hydraulic jack oil only.
 - * **DO NOT** adjust the safety overload valve.

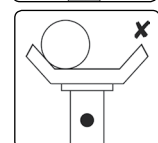
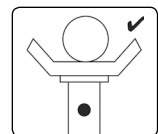
1.2. AXLE STANDS

☐ **WARNING!**

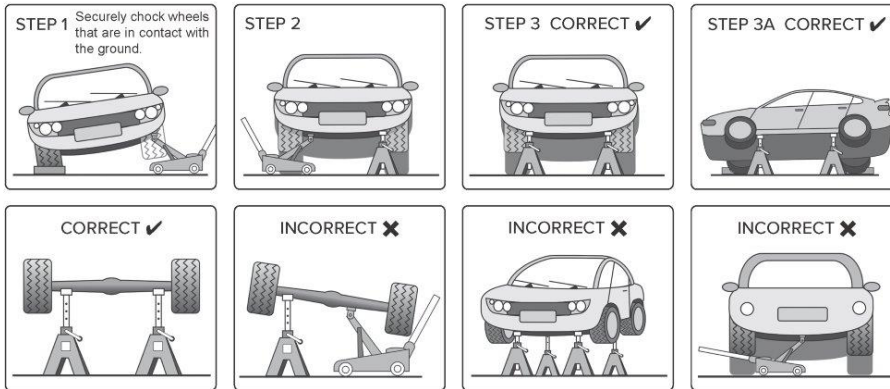
DO NOT OVERLOAD AXLE STANDS BEYOND RATED CAPACITY. OVERLOADING CAN CAUSE DAMAGE TO, OR FAILURE OF, THE AXLE STANDS. POSITION LOAD ON CENTRE OF CRUTCH/SADDLE ONLY. ALWAYS USE STANDS IN PAIRS ON HARD LEVEL SURFACE CAPABLE OF SUSTAINING THE LOAD. USE OF STANDS ON OTHER THAN HARD LEVEL SURFACES CAN RESULT IN LOAD INSTABILITY AND POSSIBLE LOSS OF LOAD. DO NOT USE ON TARMACADAM. FAILURE TO FOLLOW THESE INSTRUCTIONS MAY RESULT IN DAMAGE TO AXLE STANDS, LOSS OF LOAD RESULTING IN PROPERTY DAMAGE, SERIOUS PERSONAL INJURY OR LOSS OF LIFE.

▲ **DANGER! GREAT CARE MUST BE TAKEN TO ENSURE YOU LOWER THE VEHICLE (OR OTHER LOAD) SLOWLY AND CAREFULLY ONTO THE CENTRES OF THE CRUTCH/SADDLE OF THE AXLE STANDS.**

- ✓ Use only as specified by the manufacturer.
- ✓ Ensure the load does not exceed the maximum capacity as marked on the axle stand, per pair.
- ✓ Use no more than a single pair of stands either on the front, rear or one side of the vehicle. Use in pairs.
- ✓ No alterations or modifications shall be made to this product.
- ✓ Use on a hard, level surface, e.g. concrete. **DO NOT** use on uneven ground or tarmac.
- ✓ Securely chock wheels in contact with the ground. Before jacking and placing the stands, apply vehicle handbrake (put automatics in 'Park').
- ✓ Make sure that each stand is securely located under a strong point on the vehicle; consult the vehicle manufacturer's handbook for guidance. Ensure that height adjust locking mechanism is fully located before applying any load to the axle stand.
- ✓ Ensure that the load is located centrally on the saddle, and that the weight is directed through the vertical axis of the stand. Exercise extra care when using with a three wheeled vehicle or a trailer. Refer to vehicle manufacturer's instructions.



- ✓ Once vehicle is supported, ensure that the vehicle and stands are stable before starting work. Ensure that it is not possible for the vehicle to move before commencing any work.
- ✓ Inspect stands before each use. **DO NOT** use if they show signs of damage. **DO NOT** use if it is suspected that they have been overloaded.
- ✓ Before commencing any work or going beneath the vehicle, undertake a risk assessment. Ensure that a responsible person is aware of the work about to be undertaken.
- ✓ Replace any labels on the axle stand should they become unreadable. This applies in particular to any warning or operation instruction labels. If replacement labels are required, contact your Sealey stockist.
- ✗ **DO NOT** use axle stands on the highway, or anywhere else if it is deemed to be unsafe.
- ✗ **DO NOT** push or twist the vehicle/load whilst it is supported on stands.
- ✗ **DO NOT** mix components between stands. Use only as supplied.
- ✗ **DO NOT** allow children or animals in the vicinity of a vehicle supported on axle stands.
- ✗ **DO NOT** leave a vehicle on axle stands in an area that could be considered a hazard to others or property.
- ✓ **FOLLOW STEPS 1, 2, AND 3 TO CORRECTLY PLACE VEHICLE / LOAD ONTO AXLE STANDS.**



2. INTRODUCTION

JACK

Single piece hydraulic unit with heavy chassis design. Integral American cog-type release mechanism and long two piece handle. Heavy duty castors and large saddle design ease positioning under vehicle. Fitted with safety overload valve and pump through valve to prevent handle locking at maximum ram extension. Supplied with a pair of ratchet type axle stands, 3 tonne (3000kg) capacity per stand (6 tonne (6,000kg) per pair). Ideal for loaded vans up to 3.5tonne GVW.

AXLE STANDS

Ratchet type axle stands, with cast iron support posts. Features angled teeth in posts, which prevent accidental release of load - the more weight applied, the tighter the post is locked. Sold in pairs.

3. SPECIFICATION

JACK

Model no: **3010CX**
 Minimum saddle height: 133mm
 Maximum saddle height: 515mm
 Maximum saddle height: 154mm
 Length: 661mm
 Weight: 36.8kg

AXLE STANDS

Model no: **VS1003**
 Capacity each: 3 tonnes (3,000kg)
 Capacity per pair: 6 tonnes (6,000kg)
 Minimum height: 287mm
 Maximum height: 427mm

4. OPERATION - JACK

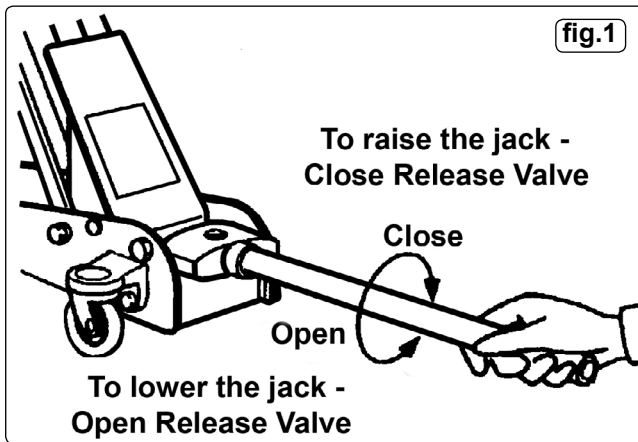
4.1. Before first use.

- 4.1.1. Assemble the handle by lining up the holes in the two-piece handle and fasten with the assembly screw.
- 4.1.2. Loosen location bolt at the back of the handle base. Insert the jack handle and tighten the bolt.
- 4.1.3. Before using jack, purge the hydraulic unit in order to eliminate any air in the system. Open the valve by turning the handle anti-clockwise (fig.1), and pumping 8 or 9 times. When complete, close the release valve by turning the handle fully clockwise (fig.1).
- 4.1.4. Place a few drops of hydraulic jack oil onto the pump piston and pump the handle several times to distribute the oil. Thoroughly lubricate all moving parts.

General jacking.

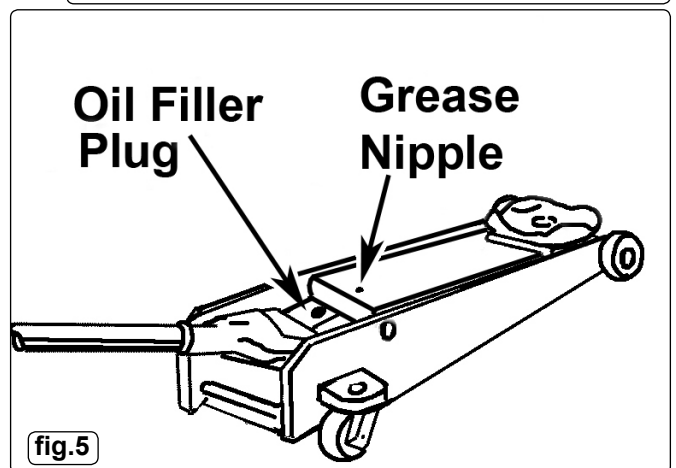
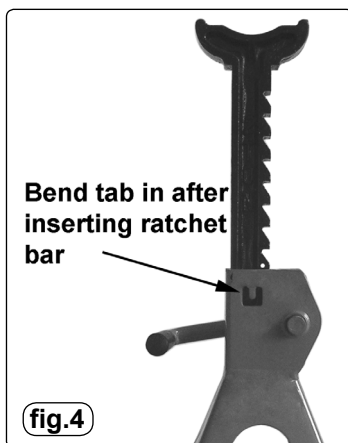
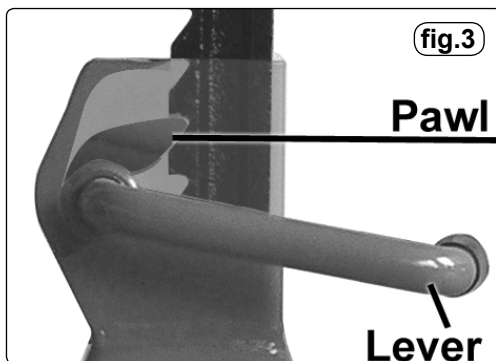
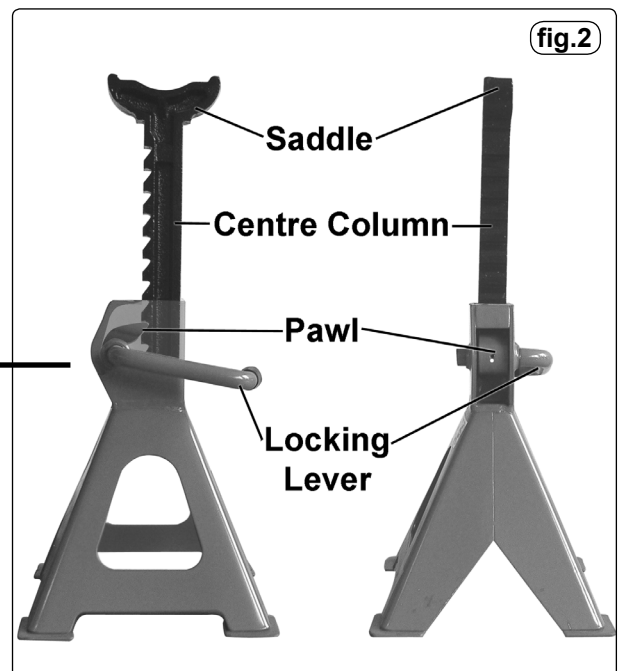
- ☐ **WARNING!** Before lifting ensure Section 1 safety instructions are read and understood.
- 4.1.5. Prepare the vehicle as mentioned in the safety instructions ensuring the ground on which the jack is to stand is level and solid (not tarmac) and use chocks under wheels of vehicle.
- 4.1.6. Position the jack saddle under the vehicle manufacturer's recommended lifting point.
- 4.2. **Jacking the vehicle.**
- 4.2.1. Turn the handle clockwise to close the release valve (fig.1) and commence pumping handle up and down until the jack saddle reaches the vehicle jacking point. Check the jacking point is centrally located on the saddle and continue to pump the handle to raise the vehicle.

- 4.2.2. Should the jack become overloaded, a safety excess pressure valve will open and stop the jack from lifting.
- **WARNING!** The jack is a lifting device only and must not be used to support the load. Use correctly rated axle stands to support the load.
- 4.3. **Lowering the vehicle.**
- **WARNING!** Ensure there are no persons or obstacles beneath the vehicle, or in the path of its descent.
- 4.3.1. Raise the jack high enough for the axle stands to be easily removed. Then turn the handle slowly anti-clockwise to open the release valve (fig.1).
- 4.3.2. The lowering speed is controlled by the amount the release valve is opened. Lower carefully, avoiding any sudden changes in descent rate which could shock load the hydraulic system.



5. ASSEMBLY - AXLE STANDS

- 5.1. Insert the centre column into the base frame and stand (fig.2).
- 5.2. Ensure the toothed side of column will engage with the locking lever mechanism (fig.3).
- 5.3. Bend in locking tab using a drift or similar and a hammer (fig.4).
- 5.4. Check the base frame and stand is in good condition and has not suffered damage during transit.



6. OPERATION - AXLE STANDS

- 6.1. Refer to manufacturer's instructions for recommended jacking/support points. Check to ensure jacking/support points are in good condition.
- 6.2. Position the stands beneath the manufacturer's recommended support points.
- 6.3. To adjust the stands: Hold the control lever up while lifting the centre column to required height. Push the control lever down to lock the pawl into the central column teeth (fig.2 and fig.3).
- WARNING! ENSURE PAWL IS FULLY ENGAGED WITH TEETH.**
- 6.4. Lower vehicle onto stands carefully and slowly . Ensure load bearing points sit in the centre of the saddles and that the stands are stable. Also ensure that there are no objects or persons that could impede the safe lowering of the vehicle onto the stands.
DANGER! You must follow these instructions carefully and ensure you **DO NOT** load the stands off centre. Failure to adhere to these warnings may cause damage, injury or loss of life!
- 6.5. Insert the locking pin to store the stands in their lowest position.

7. MAINTENANCE - JACK

- 7.1. When the jack is not in use, the ram and the handle socket should be in their lowest positions to minimise corrosion. Remove the handle to deactivate the jack.
- 7.2. Keep the jack clean and lubricate all moving parts on a regular basis, pump grease into the grease nipple (fig.5).
- 7.3. Before each use, check for broken, cracked, bent, or loose parts, or any visible damage to ram, pump, saddle, lifting arm, frame and all parts including nuts, bolts, pins and other fasteners. If any suspect item is found remove jack from service and take necessary action to remedy the problem.
- 7.4. **DO NOT** use the jack if believed to have been subjected to abnormal load or shock load.
- 7.5. Periodically check the pump piston and piston rod for signs of corrosion. Clean exposed areas with a clean oiled cloth.
- 7.6. After one year the oil should be replaced in order to extend the life of the jack. Use hydraulic jack oil only.
IMPORTANT: Only fully qualified personnel should attempt hydraulic maintenance or repair.
- 7.7. To check the hydraulic oil level, fully lower the jack and the handle and remove the oil filler plug (fig.5). The correct oil level should be approximately 5mm below the filler opening. If oil level is low, fill as required. Make sure that dirt is not allowed to enter the hydraulic system. Carefully pump unloaded jack 5 or 6 times to expel any air and then refit oil filler plug.
- 7.8. **NOTE:** Use a good quality hydraulic jack oil, such as SEALEY HYDRAULIC JACK OIL.
 WARNING: DO NOT use brake fluid, or any fluid other than hydraulic jack oil, as this may cause serious damage to the jack and will invalidate the warranty!
IMPORTANT: NO RESPONSIBILITY IS ACCEPTED FOR INCORRECT USE OF THIS PRODUCT.
Owing to their size and weight, hydraulic products should ideally be repaired by local service agents. we have service / repair agents in most parts of the UK. Before returning your product please call our technical helpline on **01284 757505** for advice and trouble shooting guidance.
If the jack is under guarantee please contact your stockist.
- 7.9. **De-commissioning the Jack**
- 7.10. Should the jack become completely unserviceable and require disposal, draw off the oil into an approved container and dispose of the jack and the oil according to local regulations.

8. MAINTENANCE - AXLE STANDS

- 8.1. Before each use, check that stands and stand welds are not cracked and that there are no missing or damaged parts.
- 8.2. Any suspect axle stands must be removed from service immediately.
- 8.3. Due to the potential hazards associated with stands, do not misuse, or make any modification to, the stands or components.
- 8.4. It is the responsibility of the owner to ensure that the operator has read these instructions together with the safety features on the side of the stand and that the operator is aware of the stand uses and limitations.

9. TROUBLESHOOTING - JACKS

| PROBLEM | POSSIBLE CAUSE | REMEDY |
|--|---|---|
| Jack will not lift the load | <ol style="list-style-type: none"> 1) Overloaded 2) Oil level low 3) Release valve not correctly closed 4) Air in system 5) Piston rod not functioning 6) Packing worn or defective | <ol style="list-style-type: none"> 1) Be sure to use jack with adequate capacity 2) Top up oil level 3) Check and close release valve 4) Open release valve and pump the handle a few times. Close valve and re-try 5) Clean and replace oil 6) Replace packing |
| Jack does not lift high enough or feels "spongy" | <ol style="list-style-type: none"> 1) Oil level too high or too low 2) Worn seals 3) Air in system 4) Release valve not closed | <ol style="list-style-type: none"> 1) Top up oil level or remove excess oil 2) Return jack to local service agent 3) Open release valve and pump the handle a few times. Close valve and re-try 4) Check and close release valve |
| Jack lifts poorly | <ol style="list-style-type: none"> 1) Pump packing or valves malfunctioning 2) Oil is dirty 3) Air in the system | <ol style="list-style-type: none"> 1) Replace packing and/or clean valves 2) Replace oil 3) Open release valve and pump the handle a few times. Close valve and re-try |
| Jack lifts but will not hold load | <ol style="list-style-type: none"> 1) Release valve partially open 2) Dirt on valve seats 3) Air in system 4) Faulty seals 5) Packing worn or defective | <ol style="list-style-type: none"> 1) Check and close release valve 2) Lower jack, close release valve. Place foot on front wheel and pull up lifting arm to it's full height by hand Open the release valve to lower arm 3) Open release valve and pump the handle a few times. Close valve and re-try 4) Replace packing or contact local service agent 5) Replace packing |
| Jack will not lower completely | <ol style="list-style-type: none"> 1) Unit requires lubrication 2) Piston rod bent or damaged 3) Jack frame/link system distorted due to overloading/poor positioning 4) Air in system 5) Release valve partially open 6) Jack spring damaged | <ol style="list-style-type: none"> 1) Oil all external moving parts 2) Replace rod or contact local service agent 3) Replace damaged parts or contact local service agent 4) Open release valve and pump the handle a few times. Close valve and re-try 5) Check and fully open release valve 6) Replace spring or contact local service agent |
| Jack does not lower at all | <ol style="list-style-type: none"> 1) Release valve still closed | <ol style="list-style-type: none"> 1) Check and fully open release valve |

Parts support is available for this product. To obtain a parts listing and/or diagram, please log on to www.sealey.co.uk, email sales@sealey.co.uk or telephone 01284 757500.

Environmental Protection



Recycle unwanted materials instead of disposing of them as waste. All tools, accessories and packaging should be sorted, taken to a recycling centre and disposed of in a manner which is compatible with the environment. When the product becomes completely unserviceable and requires disposal of it according to local regulations.

NOTE: It is our policy to continually improve products and as such we reserve the right to alter data, specifications and component parts without prior notice.

IMPORTANT: No liability is accepted for incorrect use of this product.

WARRANTY: Guarantee is 12 months from purchase date, proof of which will be required for any claim.



Sole UK Distributor, Sealey Group.
Kempson Way, Suffolk Business Park,
Bury St. Edmunds, Suffolk.
IP32 7AR



01284 757500



01284 703534



www.sealey.co.uk



sales@sealey.co.uk