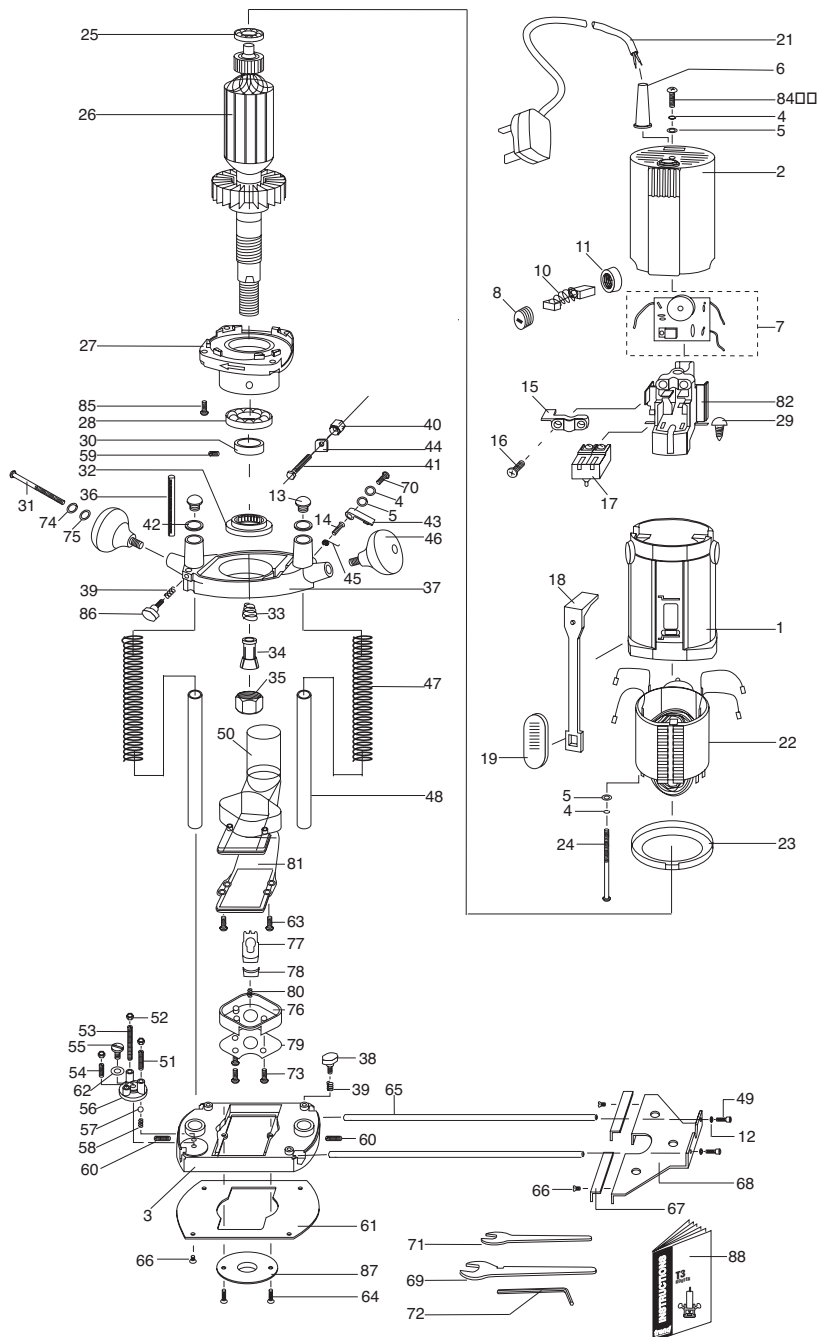


T4 - SPARE PARTS DIAGRAM

v2.1 06/2013



Please use only Trend original spare parts.

T4 - SPARE PARTS LIST			v2.1 06/2013
No.	Qty.	Desc.	Ref.
1	1	Stator Housing	WP-T4/001
2	1	Top Vent Housing	WP-T4/002
3	1	Base	WP-T4/003
4	1	Spring Washer 4mm	WP-T4/004
5	2	Washer 4mm x 7mm x 0.8mm	WP-T4/005
6	1	Cable Guard	WP-T4/006
7	1	Speed Control Circuit Board 230V T4E	WP-T4E/007
	1	Speed Control Circuit Board 115V T4EL	WP-T4EL/007
8	2	Carbon Brush Cover	WP-T4/008
9	-	-	-
10	1	Carbon Brush 230V (1 pair)	WP-T4E/010
	1	Carbon Brush 115V (1 pair)	WP-T4EL/010
11	2	Carbon Brush Holder	WP-T4/011
12	2	Spring Washer 5mm	WP-WASH/29
13	2	Column End Cap	WP-T4/013
14	1	Plunge Locking Screw LH	WP-T4/014
15	1	Cable Clamp	WP-T4/015
16	1	Screw Self Tapping Pan 4mm x 12mm Pozi	WP-T4/016
17	1	Switch 230V T4	WP-T4E/017
	1	Switch 115V T4EL	WP-T4EL/017
18	1	Push Rod	WP-T4/018
19	1	On / Off Lever	WP-T4/019
20	-	-	-
21	1	2 Core Cable with Plug 230V UK T4	WP-T4/021
	1	2 Core Cable with Plug 230V Euro T4/EURO	WP-T4EURO/021
	1	2 Core Cable with Plug 115V UK T4L	WP-T4L/021
22	1	Field 240V T4E	WP-T4E/022
	1	Field 115V T4EL	WP-T4EL/022
23	1	Baffle	WP-T4/023
24	2	Machine Screw Pan M4 x 63mm Pozi	WP-T4/024
25	1	Top Bearing 7mm x 22mm x 7mm 608ZZ	WP-T4/025
26	1	Armature 230V with Fan T4	WP-T4E/026
	1	Armature 115V with Fan T4EL	WP-T4EL/026
27	1	Lower Bearing Housing	WP-T4/027
28	1	Lower Bearing 17mm x 35mm x 10mm 6003ZZ	WP-T4/028
29	2	Screw Self Tapping Pan 4mm x 14mm Pozi	WP-T4/029
30	1	Collar Left Hand Threaded	WP-T4/030
31	2	Machine Screw Pan M6 x 55mm Pozi	WP-T4/031
32	1	Bearing Lock Plate	WP-T4/032
33	1	Collet Spring	WP-T4/033
34	1	Collet 6.35mm (1/4")	CLT/T4/635
	1	Collet 6mm	CLT/T4/6
	1	Collet 8mm	CLT/T4/8
35	1	Collet Nut	CLT/NUT/T4
36	1	Depth Stop	WP-T4/036
37	1	Middle Frame	WP-T4/037

T4 - SPARE PARTS LIST**v2.1 06/2013**

No.	Qty.	Desc.	Ref.
38	1	Thumb Knob	WP-T4/038
39	1	Spring 8mm	WP-T4/039
40	1	Base Housing Lock Nut	WP-T4/040
41	1	Bolt Hex M6 x 48mm	WP-T4/041
42	1	Circlip 17mm	WP-T4/042
43	1	Plunge Lock Lever	WP-T4/043
44	1	Lower Housing Clamp Spacer	WP-T4/044
45	1	Torsion Spring 12mm Dia	WP-T4/045
46	2	Grip Knob	WP-T4/046
47	2	Plunge Spring	WP-T4/047
48	2	Plunge Column	WP-T4/048
49	2	Machine Screw Socket M5 x 12mm	WP-SCW/12
50	1	Dust Extraction Spout Upper Housing	WP-T4/050
51	1	Threaded Pin M5 x 25mm	WP-T4/051
52	3	Nut Hex M5	WP-NUT/05
53	1	Threaded Pin M5 x 35mm	WP-T4/053
54	1	Threaded Pin M5 x 15mm	WP-T4/054
55	1	Stepped Machine Screw M6	WP-T4/055
56	1	Revolving Turret	WP-T4/056
57	1	Ball for Revolving Turret	WP-T4/057
58	1	Spring for Revolving Turret	WP-T4/058
59	1	Set Screw M4 x 5mm slot	WP-T4/059
60	2	Set Screw M6 x 8mm	WP-T4/060A
61	1	Plastic Base Slider	WP-T4/061
62	1	Spring Washer Revolving Guide Rubber	WP-T4/062
63	2	Machine Screw Csk M5 x 12mm Slot	WP-SCW/11
64	2	Machine Screw Csk M5 x 8mm Slot	WP-SCW/09
65	1	Guide Rod 8mm x 300mm (pair)	WP-T4/065
66	4	Machine Screw Csk M4 x 6mm Pozi	WP-SCW/66
67	1	Side Fence Cheeks (pair)	WP-T4/067
68	1	Parallel Side Fence Body	WP-T4/068
69	1	Spanner Special 17mm A/F	WP-T4/069
70	1	Machine Screw Pan M4 x 12mm Pozi	WP-T4/070
71	1	Spanner 14mm A/F	WP-SPAN/14P
72	1	Hex Key 4mm A/F	WP-AP/04
73	3	Machine Screw Csk M4 x 18mm Pozi	WP-T4/073
74	2	Washer 6mm x 11mm x 0.8mm	WP-T4/074
75	2	Spring Washer 6mm	WP-WASH/30
76	1	Spindle Lock Housing	WP-T4/076
77	1	Spindle Lock Bracket	WP-T4/077
78	1	Spindle Lock Button	WP-T4/078
79	1	Spindle Lock Plate	WP-T4/079
80	1	Spring for Spindle Lock	WP-T4/080
81	1	Dust Spout Lower Housing	WP-T4/081
82	1	Switch Base	WP-T4/082
83	-	-	-
84	1	Machine Screw Pan M4 x 14mm Pozi	WP-T4/084
85	4	Screw Self Tapping Pan 4mm x 20mm	WP-T4/085
86	1	Depth Stop Knob	WP-T4/086
87	1	Guide Bush 16mm	GB16/B
88	1	Manual	MANU/T4