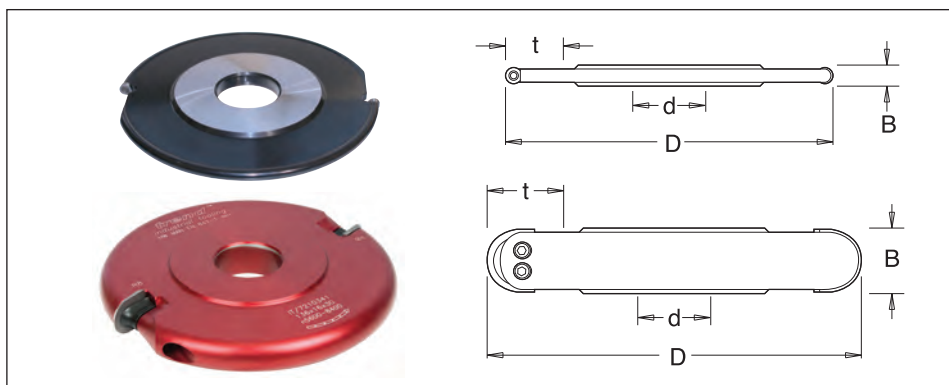
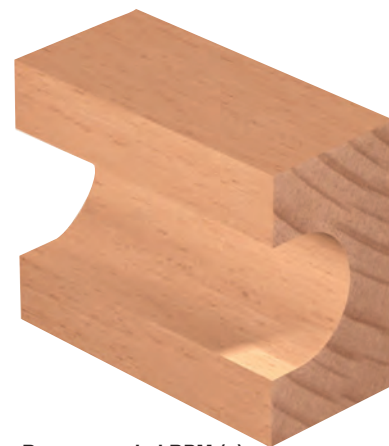


Disposable Insert Cove Cutter Blocks

- R3 – R5 with hard wearing steel body. R6 – R20 with hard wearing alloy body, both complete with disposable Tungsten Carbide knives (z).
- Suitable for producing cove cuts in softwood, hardwood and man-made boards on a spindle moulder.
- Can be used with a 120mm diameter ball bearing guide ring for ring fence work. See page 89.
- Suitable for Hand Feeding (MAN).



Recommended RPM (n):

126 – 130mm dia.	4,500 – 10,600
132mm dia.	5,700 – 10,100
136mm dia.	5,600 – 8,400
140mm dia.	5,400 – 9,500
144mm dia.	5,300 – 9,200
150mm dia.	5,000 – 8,900
160mm dia.	4,700 – 8,000



Hand Feed



EN847-1/2

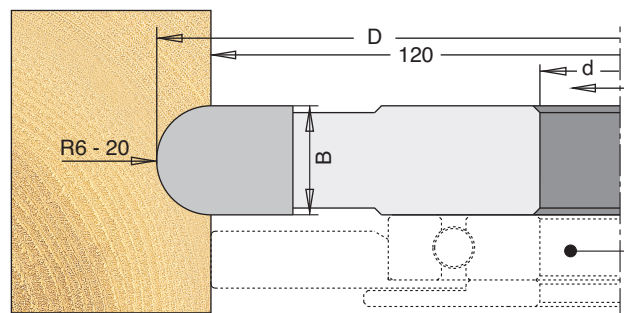
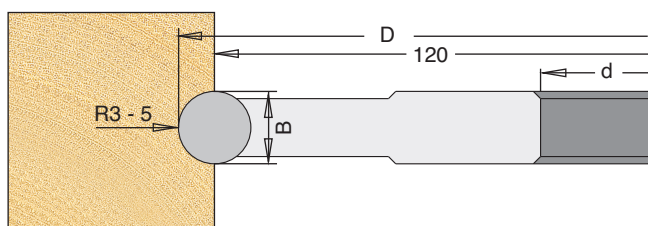
D	R	z	B	max. t	30mm Bore d	1 1/4" Bore d	Stock	Price
126	3	2	6	28	IT/721 030 1	IT/721 030 7	Y	£89.78
128	4	2	8	29	IT/721 031 1	IT/721 031 7	Y	£89.78
130	5	2	10	30	IT/721 032 1	IT/721 032 7	Y	£89.78
132	6	2	12	31	IT/721 033 1	IT/721 033 7	Y	£112.04
136	8	2	16	33	IT/721 034 1	IT/721 034 7	Y	£120.96
140	10	2	20	35	IT/721 035 1	IT/721 035 7	Y	£129.47
144	12	2	24	37	IT/721 036 1	IT/721 036 7	Y	£139.44
150	15	2	30	40	IT/721 037 1	IT/721 037 7	Y	£149.63
160	20	2	40	45	IT/721 038 1	IT/721 038 7	Y	£168.21

Spare Knives

Description	T.C. Blade								
	R=3	R=4	R=5	R=6	R=8	R=10	R=12	R=15	R=20
Product Ref.	IT/300 040 0	IT/300 040 2	IT/300 040 3	IT/300 650 6	IT/300 650 8	IT/300 651 0	IT/300 651 2	IT/300 651 5	IT/300 652 0
Price	£15.44	£9.35	£9.66	£21.74	£21.74	£21.74	£23.84	£24.47	£27.20

Ball Bearing Guide to suit R3 - R10 Cutter Blocks

Description	Ball Bearing	
Product Ref.	IT/191 542 0	IT/191 542 7
Size	120x15x30	120x15x1 1/4"
Price	£31.71	£31.71



Key

Spare Knives and Scorers - Product Reference ending in /10 are sold in packs of ten

Stock - Y means normally kept in stock for next day delivery.

N means not normally held in stock, delivery in a short time.