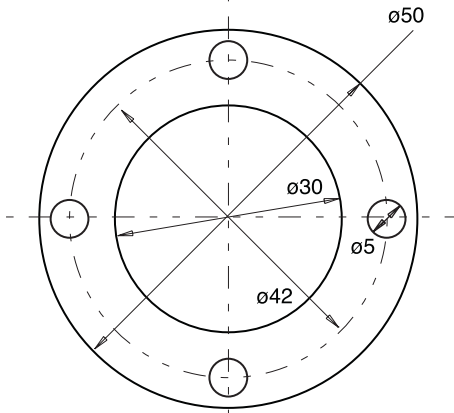
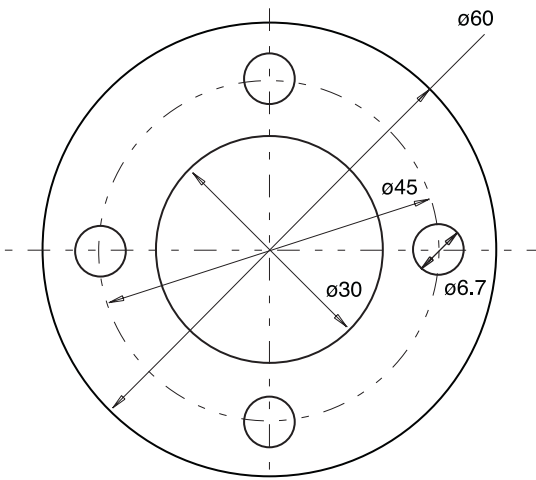


Spacers

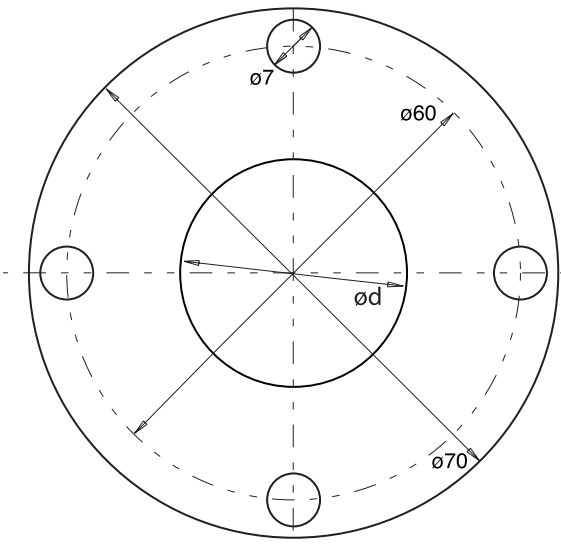
High quality, fully ground, steel spacer rings complete with pin holes. For use with our adjustable grooving cutterheads or can be used with standard groovers for comb jointing.



øD	B	Product Ref.	ød
50	0.1	IT/192 611 0	30
50	0.2	IT/192 612 0	30
50	0.5	IT/192 615 0	30
50	1.0	IT/192 616 0	30
50	2.0	IT/192 617 0	30
50	3.0	IT/192 618 0	30



øD	B	Product Ref.	ød
60	0.1	IT/192 791 1	30
60	0.2	IT/192 792 1	30
60	0.5	IT/192 793 5	30
60	1.0	IT/192 794 1	30
60	5.0	IT/192 795 1	30



øD	B	Product Ref.	ød
70	0.1	IT/192 690 1	30
70	0.2	IT/192 691 1	30
70	0.3	IT/192 692 1	30
70	0.4	IT/192 693 1	30
70	0.5	IT/192 693 5	30
70	1.0	IT/192 694 1	30
70	2.0	IT/192 695 1	30
70	3.0	IT/192 696 1	30
70	4.0	IT/192 697 1	30
70	5.0	IT/192 697 5	30
70	8.0	IT/192 698 1	30
70	10.0	IT/192 699 1	30
70	20.0	IT/192 699 2	30

