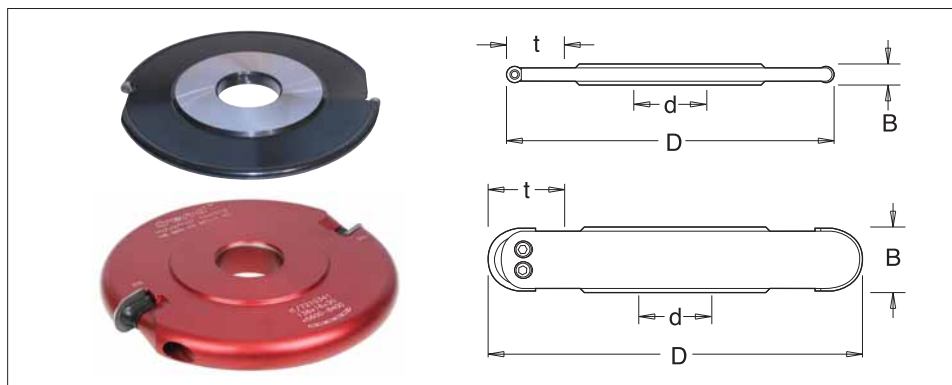


## DISPOSABLE INSERT COVE CUTTER BLOCKS

- R3 – R5 with hard wearing steel body. R6 – R20 with hard wearing alloy body, both complete with disposable Tungsten Carbide knives (z).
- Suitable for producing cove cuts in softwood, hardwood and man-made boards on a spindle moulder.
- Can be used with a 120mm diameter ball bearing guide ring for ring fence work. See page 91.
- Suitable for Hand Feeding (MAN).



### Recommended RPM (n):

- 126 – 130mm dia. \_\_\_\_ 4,500 – 10,600
- 132mm dia. \_\_\_\_ 5,700 – 10,100
- 136mm dia. \_\_\_\_ 5,600 – 8,400
- 140mm dia. \_\_\_\_ 5,400 – 9,500
- 144mm dia. \_\_\_\_ 5,300 – 9,200
- 150mm dia. \_\_\_\_ 5,000 – 8,900
- 160mm dia. \_\_\_\_ 4,700 – 8,000



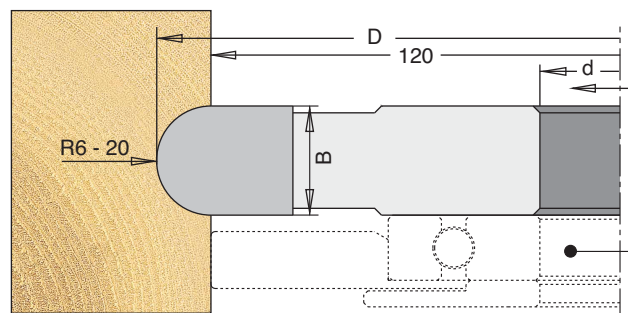
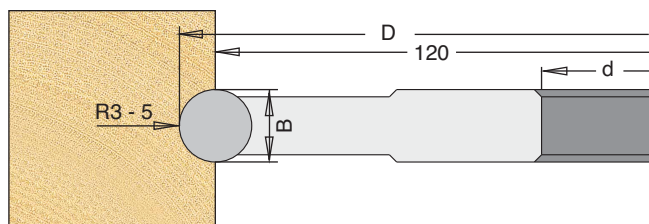
D	R	z	B	max. t	30mm Bore d	Stock	1 1/4" Bore d	Stock	Price
126	3	2	6	28	IT/721 030 1	Y	IT/721 030 7	Y	£99.07
128	4	2	8	29	IT/721 031 1	Y	IT/721 031 7	Y	£99.07
130	5	2	10	30	IT/721 032 1	N	IT/721 032 7	N	£99.07
132	6	2	12	31	IT/721 033 1	Y	IT/721 033 7	Y	£123.65
136	8	2	16	33	IT/721 034 1	Y	IT/721 034 7	Y	£133.49
140	10	2	20	35	IT/721 035 1	Y	IT/721 035 7	Y	£142.89
144	12	2	24	37	IT/721 036 1	Y	IT/721 036 7	N	£153.89
150	15	2	30	40	IT/721 037 1	N	IT/721 037 7	N	£165.13
160	20	2	40	45	IT/721 038 1	N	IT/721 038 7	N	£185.65

## SPARE KNIVES

Description	T.C. Blade									
	R=3	R=4	R=5	R=6	R=8	R=10	R=12	R=15	R=20	
Product Ref.	IT/300 040 0	IT/300 040 2	IT/300 040 3	IT/300 650 6	IT/300 650 8	IT/300 651 0	IT/300 651 2	IT/300 651 5	IT/300 652 0	
Price	£17.04	£10.31	£10.67	£23.98	£23.98	£23.98	£26.32	£27.00	£30.02	

## BALL BEARING GUIDE TO SUIT R3 - R10 CUTTER BLOCKS

Description	Ball Bearing	
Product Ref.	IT/191 542 0	IT/191 542 7
Size	120x15x30	120x15x1 1/4"
Price	£35.00	£35.00



### KEY

**Spare Knives and Scorers** - Product Reference ending in /10 are sold in packs of ten.

**Stock** - Y means normally kept in stock for next day delivery.

N means not normally held in stock, delivery in a short time.