

trend® Snappy

The Quick Release Drill System

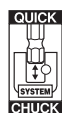
- The most effective way to increase productivity for drilling & fixing.
- For use with power drills and screwdrivers.
- Compatible with direct-drive 1/4" hex shank power bits.
- The spring-loaded Quick Chuck fitted to a drill, enables the quick change range of tooling to be interchanged quickly.
- The most comprehensive range of Quick Change tooling on the market.



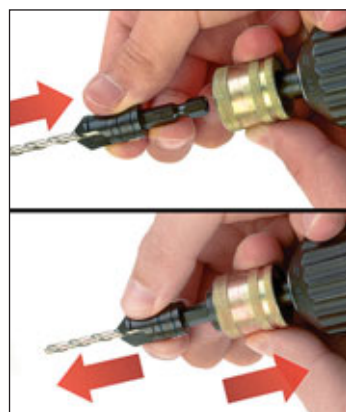
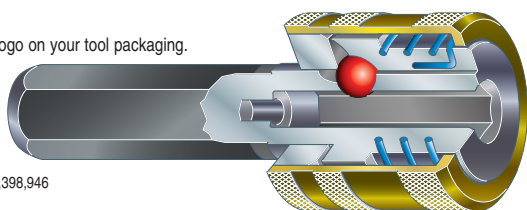
trend-uk.com/video

HOW DOES THE QUICK CHUCK WORK?

Look for this logo on your tool packaging.



Patent No. US5,398,946



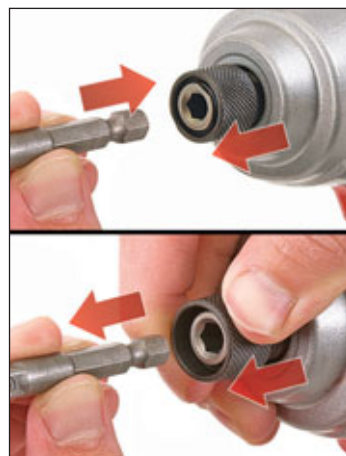
USING QUICK CHUCK IN A DRILL

The Quick Chuck is fitted into a drill, with a standard 3/8" key or keyless chuck. Six flats on the shank ensure precise location in the chuck.

Any direct drive 1/4" hex bits, can then 'snap' into the Quick Chuck and are held positively in place.

A spring-loaded outer sleeve in the Quick Chuck makes it easy to remove attachments.

QUICK CHANGE TOOLS



PLACING TOOLS DIRECT INTO IMPACT DRIVER CHUCK

Quick change hex shank tools will fit the chuck of an impact driver directly.



PLACING TOOLS DIRECT INTO A DRILL CHUCK

The hex shank can also be fitted directly into keyed and keyless chucks.

QUICK CHUCKS

STANDARD QUICK CHUCK

The Quick Chuck is fitted into a standard 3/8" key or keyless chuck. Quick Change hex shank attachments or any direct drive 1/4" hex bits can then 'snap' in effortlessly. Six flats on the shank ensure precise location in the chuck.

A sprung-loaded outer sleeve makes it easy to remove attachments.

SNAP/QC £12.59



SDS PLUS SHANK QUICK CHUCK

For SDS+ plus drills. Hammer action must be switched off when used.

SNAP/QCSDS £17.47



CENTROTEC QUICK CHUCK

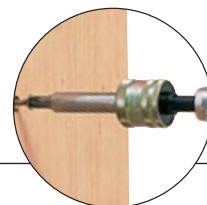
Festool® Centrotec compatible shank fitting.

SNAP/F/QC £22.90

YANKEE® SHANK QUICK CHUCK

For 5/16" No. 131A Yankee® Spiral ratchet screwdrivers (large). The Quick Chuck replaces a standard bit and then enables hex shank direct drive tools to be used.

SNAP/QCYL £17.47



HEX SHANK KEYLESS CHUCK

For use in Quick Chucks or impact drivers. Has a clamping capacity of 0.8mm (1/32") to 6mm (1/4"). Enhanced gripping power when compared to traditional key type drill chucks. Lightweight with plastic body.

SNAP/HKLC/6
£16.67



MAGNETIC QUICK CHUCK

Improved design with smaller 15mm diameter body. 60mm long magnetic chuck which accepts hex shank fitting and insert screwdriver bits. (Magnet will hold wood screws when used with insert bits.)

SNAP/QCM £16.25



HAND-DRIVER

This Quick Chuck with sturdy plastic handle, allows the use of hex shank direct drive tools. Supplied with a magnetic screwdriver holder and No. 2 Pozzi® bit.

SNAP/HAND/1 £12.59



HAND-DRIVER SET

Comprises a hand driver and a 31 piece bit set.

SNAP/DRV/SET £20.25

