

# VARIJIG SELF CLAMPING GUIDES

Self clamping, straight line clamp guides that use the Varijig low profile extrusion.

- For accurate guiding of routers, saws and jigsaws.
- Low profile extrusion with integral clamping of workpiece, double locking mechanism and two full length T-slots.
- Common Varijig extrusion to 24 inch (610mm), 36 inch (915mm) and 50 inch (1270mm) Clamp Guides.
- Metric and imperial sliding scale.
- Extrusion profile 16mm high x 54mm wide.
- Ref. VJS/CG/PRO8 is an extra wide clamp 5 inch (127mm) with four T-slots. Ideal for large sheet material. Clamps up to 2.44 metre.
- Jaws have fixing holes for accessories.

**VJS/CG/24** £30.39

Size: 24" (610mm)

**VJS/CG/36** £36.00

Size: 36" (915mm)

**VJS/CG/50** £41.64

Size: 50" (1270mm)

**VJS/CG/PRO8** £133.89

Size: 8 foot (96" / 2440mm)



Extra wide clamp  
Ref. VJS/CG/PRO8

## VARIJIG CLAMP GUIDE ACCESSORIES

A range of accessories for use with our Varijig Clamp Guides.



### ROUTER BASE PLATE

Plunge router base accessory.

- Base plate engages in the T-slot in the Varijig clamp guide extrusion.
- Made from clear plastic.
- Includes adjustable guide bar for perfect tracking using hex key provided.

**VJS/CG/RBP** £21.38



### SAW BASE PLATE

Circular saw base accessory.

- Base plate engages in the T-slot in the Varijig clamp guide extrusion.
- Includes adjustable guide bar for perfect tracking using hex key provided.

**VJS/CG/SBP** £21.38

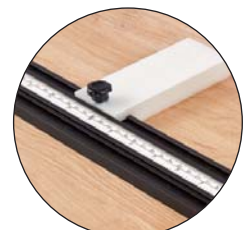


### END STOP BLOCK

Adjustable end stop block.

- Engages in the T-slot on the Varijig clamp guide extrusion and can be fixed in position using locking knob.

**VJS/CG/ESB** £10.13

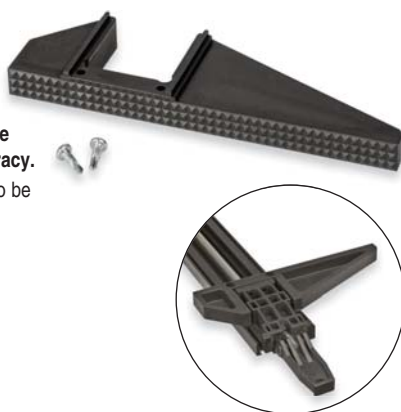


## SQUARING ATTACHMENT

Allows Varijig clamp guide to be squared up for maximum accuracy.

- Large 90° head allows clamp to be used as a clamping T-square.
- Serrated front edge.
- Includes fixing screws.

**VJS/CG/SQA** £10.69



## HANDLE EXTENSION

Lever extension handle for Varijig clamp guides.

- Gives better leverage to operate the clamp, especially when more clamping pressure is required.
- Increases lever length by 134mm.

**VJS/CG/EXT** £6.18

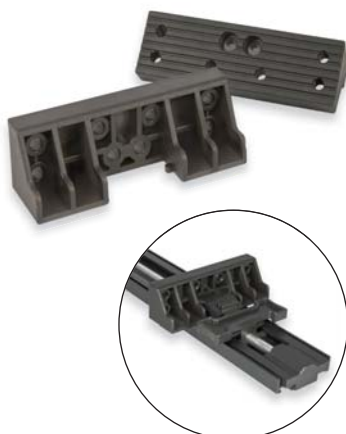


## WIDE JAW KIT

Pair of plastic jaws for fitting onto the jaws of the Varijig clamp guides.

- Distributes clamping pressure over the workpiece to minimise clamping marks.
- Built-in mounting holes allow a batten to be fitted.
- Includes fixing screws.

**VJS/CG/WJK** £7.31



## ADJUSTABLE SETTING GUIDE & STOP

Short alloy extrusion rail can be fixed anywhere along length of Varijig clamp guide. Limits rail travel to a set position from edge.

- Ideal for repetitive grooves.
- Removable alloy adjustable bridge guide stop can be locked in place.
- Bridge travel is 176mm.
- Can be used as a length stop.

**VJS/CG/AGS** £14.64



## SIDE-TO-SIDE CLIPS

Allows two Varijig clamp guides to join side-to-side to clamp workpiece to workbench, obstruction free.

- Clamp one guide to the bench and attach another clamp upside down.
- Two clamps joined together creates a 112mm wide component support surface which is ideal for sanding.
- Six adapters are included so three pairs of clamps can be linked securely together.

**VJS/CG/SSC** £14.64  
6 pack



## FEATHER BOARD

Feather board finger pressure accessory.

- Clamps to the Varijig clamp guide which can then be easily clamped to a router table top.
- Provides horizontal side pressure.
- Includes fixing kit.

**VJS/CG/FB** £10.69



## T11 VARIJIG CLAMP GUIDE KIT

Allows T11 Router to be connected to the Varijig clamp guides.

- Comprises alloy bracket fixing and plastic slider.
- Adjustment facility to make router nearer or further away from guide to allow wider slots and trenches to be routed.
- Alloy bracket is bolted to T11 base.

**T11/VJS/CGKIT** £42.62



## BACK-TO-BACK CLIPS

Allows two Varijig clamp guides to be joined back to back.

- Clips comprise of alloy brackets and knobs.
- Raises component by 32mm for unobtrusive clamping especially for full edge mould work.

**VJS/CG/BBC** £11.26  
8 pack



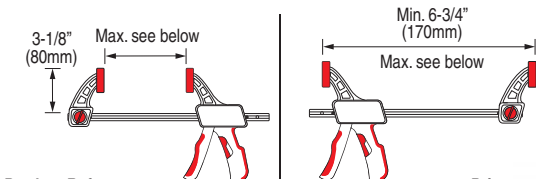


# CLAMPING SYSTEMS

## BAR CLAMP & SPREADER

Designed for one handed use, converting easily from clamp to spreader. Clamps have 112kg clamping pressure. Four sizes available.

- Heavy-duty internal mechanism.
- Precision engineered special shaped 19mm x 6mm carbon steel bar for consistent and rigid performance.
- 80mm throat with fixed jaw reversible for spreading operations.
- Soft jaw pads made from thermal plastic rubber.
- Ergonomically designed plastic handles with non-slip (TPR - thermal plastic rubber) inserts, and insert release trigger for maximum comfort.



Product Ref.	6" (152mm)	14" (355mm)	Price
<b>BCS/6 +</b>			£20.07
<b>BCS/12 +</b>			£22.45
<b>BCS/24 +</b>			£24.82
<b>BCS/36 +</b>			£27.43

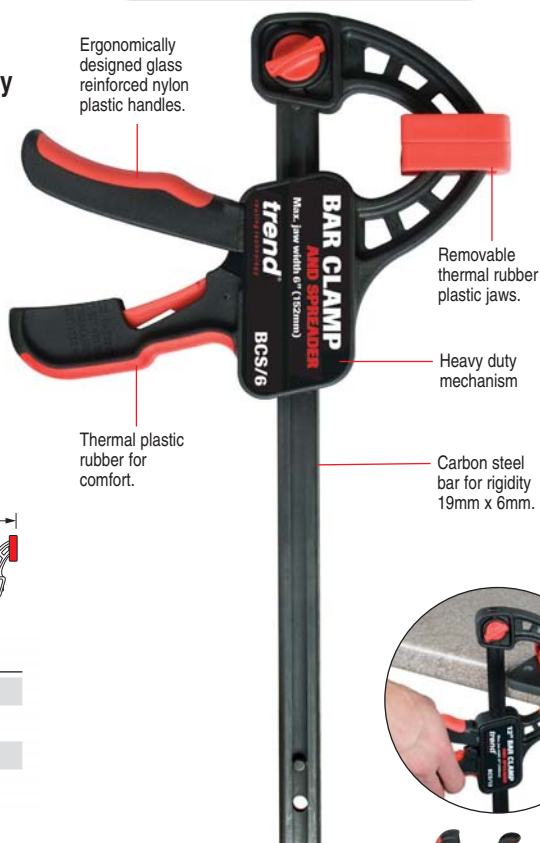


**REPLACEMENT PARTS:**

Product Ref.	Price
<b>WP-BCS/FB</b>	£1.83
<b>WP-BCS/SJP</b>	£1.83

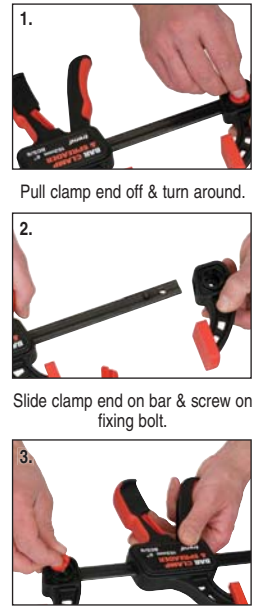


112KG CLAMPING PRESSURE



### CLAMP TO SPREADER:

Undo fixing bolt & release clamp end.



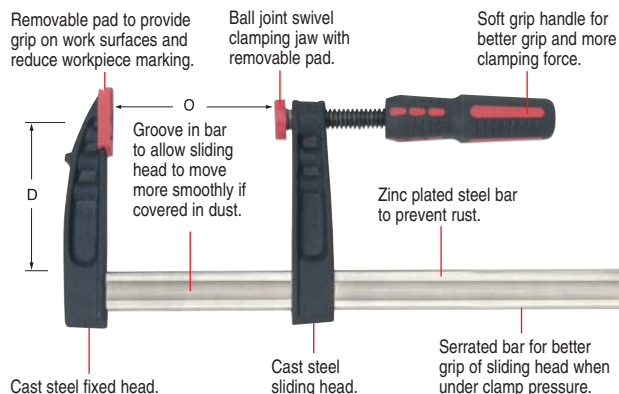
## HEAVY DUTY GRIPPER CLAMPS

A concise range of F-Style quick action gripper clamps for a variety of clamping applications.

O Max. Opening	D Max. Throat Depth	S Size of Steel Section	Product Ref.	Price
200mm (8")	100mm (4")	27 x 7.5mm	<b>FC/200</b>	£14.67
300mm (12")	100mm (4")	27 x 7.5mm	<b>FC/300</b>	£17.19
500mm (20")	100mm (4")	27 x 7.5mm	<b>FC/500</b>	£19.74

**REPLACEMENT PARTS:**

Product Ref.	Price
<b>WP-FC/SJP</b>	£0.72
<b>WP-FC/FJP</b>	£0.72



# LOC BLOCKS

Pack of four gripping blocks that can interlock together to allow workpiece to be held in place when sanding, drilling and finishing.

- No need to use clamps. Set-up in seconds. Grips both workpiece and bench.
- Lifts workpiece from bench, to allow complete access to every edge.
- Can be used for routing, however extra care should be taken to prevent material tilt.
- Anti-vibration, non-slip, non-marring rubber pads on both top and bottom of the blocks.



**Interlocking**  
Use singly or interlock.

**LOC/BLK/PK1** (4 pack) £15.14

Size: 67 x 67 x 25mm (173 x 173mm when 4 blocks interlocked)



**Painting**  
Perfect for avoiding drips and sticking.



**Routing with bottom clearance.**  
Simply position blocks in corners.



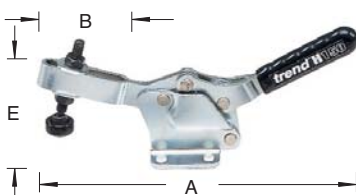
**Sanding**  
Non-slip and no vibration.

# TOGGLE CLAMPS

## PROFESSIONAL

Ideal for securing workpiece either onto jigs or to the surface of the machine. 'E' is the threaded spindle length.

Description	Force kg	E mm	A mm	B mm	Product Ref.	Price
Small	75	30	105	36	H75	£15.25
Medium	150	50	160	53	H150	£19.13
Large	250	65	205	65	H250	£27.36



## CRAFTPRO & HOBBYIST

Economy range clamp, ideal for securing workpiece either onto jigs or to the surface of the machine (150kg force).

Description	Force kg	E mm	A mm	B mm	Product Ref.	Price
Medium (1 off)	150	50	160	53	CR/H150	£14.05
Medium (pair)	150	50	160	53	CR/H150/SET	£24.83

## TOGGLE CLAMP MOUNTING PLATES

For quick insertion and removal of H150 and CR/H150 toggle clamps.

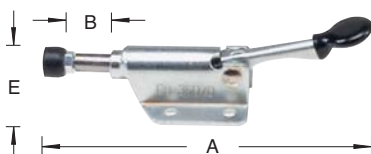


Product Ref.	Price
H150/MP	£9.58

## PUSH-PULL CLAMP

Ideal for securing workpiece against a back stop on a jig.

Force kg	E mm	A mm	B mm	Product Ref.	Price
150	23	126	11	PP150	£20.34



## SELF-ADHESIVE BACKED NON-SLIP MAT

Ideal for gripping and holding component while woodworking and jig making. Can be used to refurbish pushblocks or lining the drawers of workshop tool chests etc. Can be cut to size to suit application.

**NS/MAT/B** £6.38  
Size: 300 x 300mm



## NON-SLIP MAT

Specifically formulated PVC gripping mat which holds work in place for woodworking applications without the need for clamps. Ideal for sanding and hand planing.

**NS/MAT/A** £10.90  
Size: 1220 x 610mm

