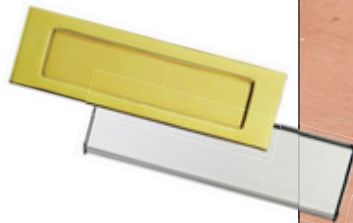


# LETTERBOX JIG

Enables the cutting out of letterbox openings to be carried out quickly and accurately.

- The size-adjusting jig ensures that template openings are always cut exactly square.
- Made from cast aluminium and machined to a high standard.
- Simple to set-up and use.
- The jig is adjustable to enable apertures to be cut out as small as 210mm by 46mm and as large as 310mm by 82mm.
- Requires 1/2" dia. x 50mm cut length cutter.
- Includes 30mm x 10mm spigot guide bush.
- A Unibase may be required for certain makes and models of router.



**LB/JIG + £101.97**

**OPTIONAL ACCESSORIES:** Product Ref. Price

1. Recommended 1/2" shank cutters		
Professional 12.7mmØ	<b>3/83DX1/2TC</b>	£38.36
CraftPro 12.7mmØ	<b>C153DX1/2TC</b>	£28.58
All with 12.7mm (1/2") diameter x 50mm cut length		
2. Universal sub-base	<b>UNIBASE</b>	£20.51

**SPARE PART:** Product Ref. Price

3. 30mm guide bush		
With extra long 10mm spigot	<b>GB30/A</b>	£9.80

Please see page 183.

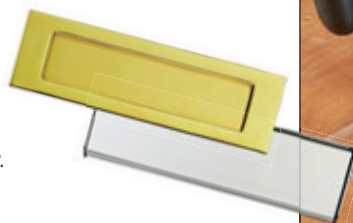


Certain makes and models of router will require a Unibase to accept the guide bushes.

# LETTERBOX TEMPLATE

Clear plastic template for use with any plunge router to accurately fit three sizes of letterbox plates.

- Made from 6mm thick clear plastic.
- For three sizes of letterbox plates: 220 x 50mm, 210 x 60mm and 200 x 60mm.
- Use on wooden doors up to 50mm thick.
- Use with 1/2" collet plunge router.
- Requires 12mm cutter and 30mm x 5mm spigot guide bush.
- A Unibase may be required for certain makes and models of router.



**TEMP/LB/A £46.58**

Size: 326 x 290 x 8mm

**OPTIONAL ACCESSORIES:** Product Ref. Price

1. Recommended 1/2" shank cutters		
Professional 12mmØ	<b>3/73X1/2TC</b>	£39.70
CraftPro 12mmØ	<b>C200DX1/2TC</b>	£25.79
All with 12mm diameter x 50mm cut length		
2. Recommended 30mm guide bush	<b>GB30/B</b>	£9.14
3. Universal sub-base	<b>UNIBASE</b>	£20.51



Certain makes and models of router will require a Unibase to accept the guide bushes.

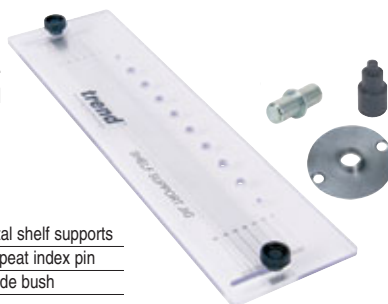


COMPATIBILITY  
www.trend-uk.com/compatibility

# SHELF SUPPORT TEMPLATE

A template to allow routing or drilling of 32mm centre holes for 5mm diameter shelf supports.

- Made from clear plastic, with graduation scales.
- Adjustable clamping bar with two locking knobs.
- Can be used with MDF, timber and particle board.
- A Unibase may be required for certain makes and models of router.



**TEMP/SS/A £49.38**

Size: 500 x 130 x 8mm

**INCLUDES:**

12 x Plain metal shelf supports
1 x Knurled repeat index pin
1 x 9.5mm guide bush

**SUPPORTS ACCESSORIES:** Product Ref. Price

1. Metal shelf supports	<b>SS/M5/12</b>	£3.17
Pack of 12 with rubber sleeve to protect glass. Sleeve can be removed. Pin=5mmØ x OL=16.5mm.		
2. Brass plated shelf supports	<b>SS/B5/12</b>	£3.17
Pack of 12. Pin=5mmØ x OL=23mm. Load capacity 100kg.		
3. Plastic shelf supports	<b>SS/P5/12</b>	£3.17
Pack of 12. Load capacity 100kg.		

**SUITABLE TOOLS**

	Product Ref.	Price
4. 5mmØ Recommended cutters		
Professional router drilling cutter	<b>61/05X1/4TC</b>	£24.34
CraftPro router drilling cutter	<b>C174X1/4TC</b>	£16.67
5. 5mm Shelf support drill bit guide	<b>TEMP/SSD/5MM</b>	£29.90
A quick release shank lip and spur 5mm HSS drill bit guide, which when used with a template will allow 5mm diameter blind holes to be drilled for 5mm shelf supports.		

