

CONTRACTOR LOCK JIG

This jig uses a set of interchangeable templates and a router to cut the mortise and faceplate recess for popular door locks.

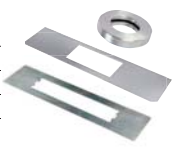
- For most common sash mortise and dead locks, with up to 2-3/4" or 70mm deep mortises and a 7/8" or 1" faceplate. Deeper mortises can be achieved with a suitable size of auger bit.
- Fast, clean and accurate results on doors 34mm to 58mm thick, even in hardwood.
- Precision manufactured plates and body.
- The jig requires a plunge router with a 80mm plunge, fitted with a 30mm guide bush and 12mm diameter long reach cutter.

LOCK/JIG £102.92



INCLUDES:

- 1 x Guide bush collar
- 12 x Faceplate templates
- 4 x Mortise templates
- 1 x Line-up template



TEMPLATES INCLUDED:

Faceplate Dimensions:		
Metric	Imperial (approx.)	Template
22.2 x 156mm	7/8" x 6-1/8"	1
22.5 x 152.5mm	7/8" x 6"	2
25.4 x 121mm	1" x 4-3/4"	3
25.4 x 127.5mm	1" x 5"	4
25.4 x 133.5mm	1" x 5-1/4"	5
25.4 x 145mm	1" x 5-3/4"	6
25.4 x 153mm	1" x 6"	7
25.4 x 156.5mm	1" x 6-1/8"	8
25.4 x 165.5mm	1" x 6-1/2"	9
25.4 x 177mm	1" x 7"	10
25 x 57.5mm	1" x 2-1/4"	11 UPPER
26 x 56.5mm	1" x 2-1/4"	11 LOWER
25.6 x 162mm	1" x 6-3/8"	12

Mortise Lock Dimensions:		
Metric	Imperial (approx.)	Template
16 x 72mm*	5/8" x 2-7/8"	A
16 x 107mm*	5/8" x 4-1/4"	B
19 x 78mm*	3/4" x 3"	C
19 x 109mm*	3/4" x 4-1/4"	D

* These are maximum mortise lock case (body) lengths, unless radius ends are squared with a chisel. Actual length of mortise is 7mm longer. Smaller mortise locks can be accommodated depending on position of their fixing screws.

SPARE TEMPLATES:

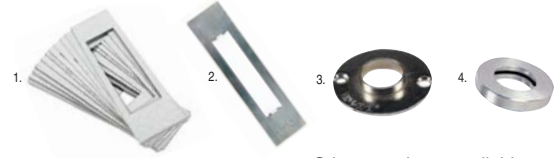
Product Ref.	Price
WP-LOCK/T/A	£6.93
WP-LOCK/T/B	£6.93
WP-LOCK/T/C	£6.93
WP-LOCK/T/D	£6.93
WP-LOCK/T/2	£6.93
WP-LOCK/T/1	£6.93
WP-LOCK/T/3	£6.93
WP-LOCK/T/4	£6.93
WP-LOCK/T/5	£6.93
WP-LOCK/T/6	£6.93
WP-LOCK/T/7	£6.93
WP-LOCK/T/8	£6.93
WP-LOCK/T/9	£6.93
WP-LOCK/T/10	£6.93
WP-LOCK/T/11	£6.93
WP-LOCK/T/12	£6.93

ACCESSORY TEMPLATES:

Product Ref.	Price
WP-LOCK/T/E	£7.64
WP-LOCK/T/152	£13.95
WP-LOCK/T/13	£7.64
WP-LOCK/T/190	£13.95
WP-LOCK/T/200	£13.95
WP-LOCK/T/201	£13.95
WP-LOCK/T/G	£7.64
WP-LOCK/T/14	£13.95
WP-LOCK/T/19	£10.90
WP-LOCK/T/229	£13.95
WP-LOCK/T/15	£7.64
WP-LOCK/T/18	£8.12
WP-LOCK/T/17	£7.64
WP-LOCK/T/16	£7.64

LOCK JIG & LARGE LOCK JIG SPARES & OPTIONAL ACCESSORIES:

Product Ref.	Price
1. Template set Pack of 16 as supplied in standard Lock Jig. Comprises: faceplate templates 1-12 & mortise templates A-D. WP-LOCK/T/SET	£81.83
2. Line-up template Allows jig to be centred more accurately on door. Included with LOCK/JIG. WP-LOCK/T/LUP	£9.44
3. Guide bushes Standard 30mm GB30 Special 16mm GB160	£8.36 £10.90
4. Guide bush collar Fits to GB160 as supplied with the Trend Hinge Jig to give 30mm OD. Secures to bush with integral ring. GB/COLL/1630	£6.43
5. Universal sub-base UNIBASE	£18.77
6. Recommended 1/2" shank cutters 12mmØ x 115mm overall length. For up to 70mm deep mortise depending on plunge of router & use of Unibase etc. Professional 3/75X1/2TC Trade Range TR37X1/2TC CraftPro C172X1/2TC	£41.41 £33.76 £23.60
7. Recommended 1/4" shank cutters 12mmØ x 70mm overall length. Deepening of mortise with auger bit required. Professional 3/8LX1/4TC Trade Range TR12X1/4TC CraftPro C019AX1/4TC	£27.73 £24.83 £18.53



Certain makes & models of router will require a Unibase to accept the guide bushes.



CONTRACTOR LARGE LOCK JIG

For routing the faceplate and mortise for larger locks quickly and accurately.

- Suitable for DDA (Disability Discrimination Act) style locks. 20mm or 24mm x 235mm radius end face plate and 17mm x 170mm mortise.
- Adaptor plate included to allow smaller templates (239mm x 60mm) to be fitted (as supplied with standard Lock Jig opposite).
- Suitable for doors 34mm to 58mm thick.
- An auger bit and drill is required to complete deep mortises.

LOCK/JIG/A £148.94



HOW BOTH LOCK JIGS WORK:

TEMPLATES

Both the mortise and the faceplate are selected to suit the size of the lock. Templates are held by two powerful magnets.



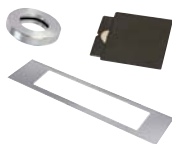
COMPATIBILITY

Must be used with a 30mm x 6mm spigot guide bush and 12mm diameter cutter. For deep mortises a heavy duty router should be used with the long reach cutter.



INCLUDES:

- 1 x Guide bush collar
- 2 x Faceplate templates
- 1 x Mortise template
- 1 x Template adaptor



TEMPLATES INCLUDED:

Faceplate Dimensions:	Template
20 x 235mm (radiused ends)	1
24 x 235mm (radiused ends)	2
Mortise Dimensions:	Template
17 x 170mm	A

SPARE TEMPLATES:

	Product Ref.	Price
Size 17mm x 170mm mortise	WP-LOCK/A/T/A	£9.69
Size 20mm x 235mm faceplate (RE)	WP-LOCK/A/T/1	£9.69
Size 24mm x 235mm faceplate (RE)	WP-LOCK/A/T/2	£9.69

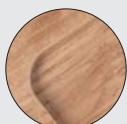
ACCESSORY TEMPLATES:

	Product Ref.	Price
Size 15mm x 40mm template	WP-LOCK/A/T/10	£13.26
Size 15.5mm x 65mm template	WP-LOCK/A/T/11	£13.26
Size 15.5mm x 115mm template	WP-LOCK/A/T/12	£13.26
Size 15.5mm x 225mm template	WP-LOCK/A/T/13	£13.26
Size 15.5mm x 235mm template	WP-LOCK/A/T/14	£13.26
Size 17mm x 180mm template	WP-LOCK/A/T/15	£13.26
Size 18mm x 85mm template	WP-LOCK/A/T/16	£13.26
Size 18mm x 176mm template	WP-LOCK/A/T/17	£13.26
Size 18mm x 180mm template	WP-LOCK/A/T/18	£13.26
Size 19mm x 160mm template	WP-LOCK/A/T/19	£13.26
Size 19mm x 100mm template	WP-LOCK/A/T/21	£13.26
Size 19mm x 113mm template	WP-LOCK/A/T/20	£13.26
Size 19mm x 155mm template	WP-LOCK/A/T/21	£13.26
Size 19mm x 235mm template	WP-LOCK/A/T/23	£13.26
Size 20mm x 153mm template	WP-LOCK/A/T/24	£13.26
Size 20mm x 160mm template	WP-LOCK/A/T/25	£13.26
Size 20mm x 168mm template	WP-LOCK/A/T/26	£13.26
Size 20mm x 234mm template (RE)	WP-LOCK/A/T/27	£13.26
Size 20mm x 235mm template	WP-LOCK/A/T/28	£13.26
Size 20mm x 240mm template (RE)	WP-LOCK/A/T/29	£13.26
Size 22mm x 125mm template	WP-LOCK/A/T/33	£13.26
Size 22mm x 165mm template	WP-LOCK/A/T/30	£13.26
Size 22mm x 224mm template	WP-LOCK/A/T/31	£13.26
Size 22mm x 225mm template (RE)	WP-LOCK/A/T/34	£13.26
Size 22mm x 225.5mm template	WP-LOCK/A/T/32	£13.26
Size 22.4mm x 235mm template	WP-LOCK/A/T/35	£13.26
Size 22.5mm x 77mm template	WP-LOCK/A/T/36	£13.26
Size 24mm x 235mm template	WP-LOCK/A/T/44	£13.26
Size 25.4mm x 235mm template	WP-LOCK/A/T/49	£13.26

(RE) = radiused ends

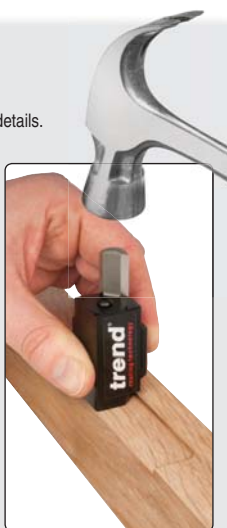
CORNER CHISEL

See page 169 for full details.



Before

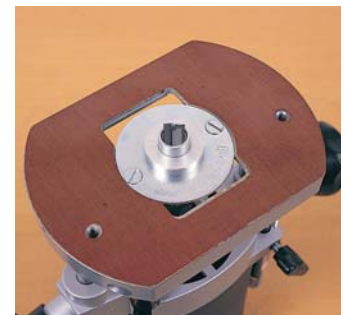
After



Product Ref.
C/CHISEL

HINGE AND LOCK OPERATIONS

If a medium duty router is to be used, then full mortises are not possible and a suitable sized auger bit in a drill will be required. If the Lock Jig is to be used in conjunction with the Trend Hinge Jig, then the collar can be used to bush out the 16mm guide bush to 30mm.



FINAL APPLICATION

Mark the appropriate position for the lock and centralise on the door using the centre line notches within the jig aperture. The jig can then be clamped to the door. In most applications, the door will be held secured on its side.



FULLY ADJUSTABLE TRADE LOCK JIG

For precision fitting of locks into doors. For lock faceplates of lengths up to 250mm.

- Quick and easy to set-up as jig has engraved markings on underside to allow set-up for doors 35mm, 40mm, 44mm and 54mm thick.
- Length of the aperture in the jig can be adjusted from 30mm to 250mm.
- Engraved for 16mm and 19mm lock widths and 22.5mm and 25.4mm faceplate widths.
- Made from 12mm thick laminate with sliding phenolic plastic plates.
- Adjustable datum locking alloy clamping bar with clamping range from 30mm to 80mm.
- Can be used for routing the mortise for 16mm and 19mm lock bodies.
- The jig requires a plunge router with an 80mm plunge fitted with a 30mm guide bush with 10mm long spigot, 12mm diameter long reach cutter and two clamps.

LOCK/JIG/B £96.75



Setting gauge for doors to centre jig & set widths.

Engraved on top for lock width & on underside to allow set-up for 35mm, 40mm, 44mm & 54mm door widths.

INCLUDES:

- 1 x Datum clamp bar
- 1 x Sliding plate
- 2 x Setting blocks

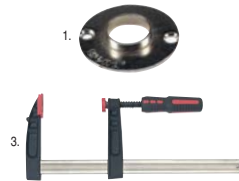


RECOMMENDED CUTTERS:

	Product Ref.	Price
For faceplate or mortise		
Professional 12mmØ router cutter	3/75X1/2TC	£41.41
Trade Range 12mmØ router cutter	TR37X1/2TC	£33.76
CraftPro 12mmØ router cutter	C172X1/2TC	£23.60
115mm overall length. For up to 70mm deep mortise dependant on plunge of router and use of Unibase etc.		
For faceplate		
Professional 12mmØ router cutter	3/8LX1/4TC	£27.73
Trade 12mmØ router cutter	TR12X1/4TC	£24.83
CraftPro 12mmØ router cutter	C019AX1/4TC	£18.53
70mm overall length. For mortise, deepening of mortise with auger bit required.		

OPTIONAL ACCESSORIES:

	Product Ref.	Price
1. Guide bush 30mmØ with 10mm spigot	GB30/A	£8.96
2. Universal sub-base	UNIBASE	£18.77
3. Clamp (200mm jaw)	FC/200	£14.67



Certain makes and models of router will require a Unibase to accept the guide bushes.

Router, clamp & cutter not included.