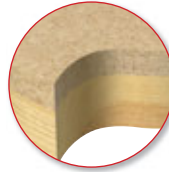


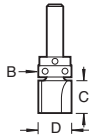
## GUIDED TEMPLATE PROFILER

Shank mounted bearing profilers are ideal for template guidance. Use for rebating and trimming edges only.

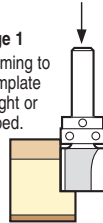
▲ Extra care must be taken to avoid cutter breakage. A max. 3mm overlap should be left before copy profiling.



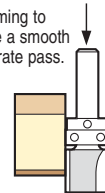
Ref. C121



Stage 1  
Trimming to a template straight or shaped.



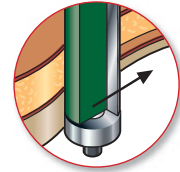
Stage 2  
Trimming to make a smooth accurate pass.



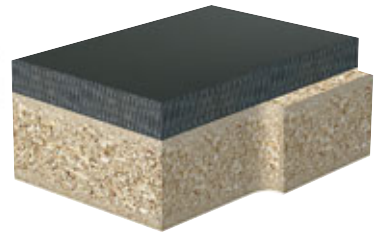
D mm	C mm	B mm	Product Ref.	Shank Diameter			
				1/4"	8mm	12mm	1/2"
9.5	6.35	9.5	C121G	£14.84	-	-	-
9.5	12.7	9.5	C121H	£18.88	-	-	-
9.5	25.0	9.5	C121P	£29.20	-	-	-
12.7	4.0	12.7	C121K	£19.43	-	-	-
12.7	6.35	12.7	C121N	£22.36	-	-	-
12.7	9.5	12.7	C121B	£21.17	-	-	-
12.7	12.7	12.7	C121F	£23.21	-	-	-
12.7	25.4	12.7	C121	£20.90	-	-	-
12.7	32.0	12.7	C121D	£23.36	-	-	-
15.9	12.7	15.9	C121E	£23.36	-	-	-
15.9	25.0	15.9	C121C	£33.09	-	-	-
16.0	19.0	16.0	C121A	-	£25.79	-	-
19.0	63.0	19.0	C165B	-	-	-	£52.95
19.1	19.1	19.1	C165	-	-	-	£27.13
19.1	25.4	19.1	C123	£27.13	-	-	-
19.1	50.0	19.1	C166	-	-	£45.25	£45.25
25.0	25.0	25.0	N C166B	-	-	-	£48.62

## 90° DOUBLE GUIDED TRIMMER

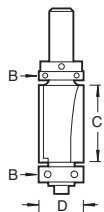
Allows templates to be placed either on top or the bottom of the material, for ease of routing.



Always restrict overlap of material to a max. of 3mm.



D mm	C mm	B mm	Product Ref.	Shank Dia. 1/2"
19.1	50.0	19.1	C199	£51.48



Ref. C166B

## BEARING GUIDED 2° & 3° DOOR LEADING EDGE

2° or 3° undercut shank mounted bearing guided router cutters for routing a leading edge on doors to allow a tight fit against jamb.

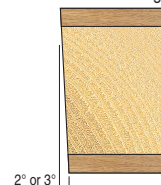
**NEW**

Ref. C214

Ref. C214B



Door edge



2° or 3°

A Deg.	D mm	C mm	B mm	Product Ref.	Shank Dia. 8mm	Shank Dia. 1/2"
93°	24.2	50.0	19.1	C214	-	£70.93
93°	19.3	38.1	16.0	N C214B	£38.35	-
92°	22.5	50.0	19.1	N C214A	-	£57.89

